

*"Creations"*<sup>®</sup>  
by  
ALNO, INC.



BATHROOM  
ACCESSORIES

07/06/26

the  
DESIGNER'S CHOICE

ACRYLIC CONTEMPORARY	19
ACRYLIC ROYALE	20
ARCH	23-24
CHARLIE'S	11-14
CLASSIC TRADITIONAL	28-29
COMPLIANT GRAB BARS	53
CONTEMPORARY I	32-34
CONTEMPORARY II	35-37
CRYSTAL CONTEMPORARY I	51
CRYSTAL CONTEMPORARY II	52
CUBE	3-6
EMBASSY	44-46
EURO	42-43
GEOMETRIC	27
INFINITY	40-41
LINEAR	1-2
LUNA	15-16
MANHATTAN	21-22
NICOLE	25-26
RIBBON & REED	38-39
ROYALE	7-10
SIERRA	30-31
SPA 1	17
SPA 2	18
VITA BELLA	49-50
YALE	47-48
SPECIAL FINISH FORM	Back Cover
<b>POLICY</b>	

## POLICY

**SHIPPING** All orders are FOB our warehouse. Shipments will be made by the most expeditious and economical means available to us, unless specific shipping instructions are indicated.

**DROP SHIPMENTS** Alno, Inc. will drop ship within the United States for no additional charge. Incorrect address will be charged a \$25.00 address correction fee.

**CLAIMS/SHORTAGES** Alno, Inc. must be notified of shortages within 14 days from date of invoice. No claims will be accepted beyond this time. Damage claims for merchandise received broken or damaged must be made within 7 days of receipt.

**RETURNED GOODS** Merchandise may be returned only with approval from Alno, Inc. Returns are accepted within 60 days of purchase and are subject to a 25% restocking fee + shipping, unless product is defective.

**MINIMUM ORDER** There are no minimums.

**PRODUCT CARE** Our products are made from the very best materials: solid brass, bronze, high quality zinc, and crystals. Each item must be cleaned with a damp cloth only. Products must be wiped dry and no residue or water can be left on the product. There is no warranty for products that have been abused by liquids, chemicals, or harsh abrasives.

**FINISHES** Over time, the living finishes may patina by use or rub off, and coloration will change in a natural process enhancing the cabinet hardware's unique beauty. Alno, Inc. is not responsible for coloration transformations on living finishes. Living Finishes consist of Antique English, Antique English Matte, Barcelona, Bronze, Polished Antique, and Polished Brass No Lacquer or Unlacquered Brass.

### \*\*\*SPECIAL ORDERS

- Fax or email us for project quotes or large quantity quotes.
- We can do special finishing. Call us for more information.
- We do stock Unlacquered Brass products.

### PRICES

All prices are subject to change without notice.

**Phone** (818) 882-6028

**Fax** (818) 570-7757

**Email** orders@alnoinc.com

**www.alnoinc.com**

## FINISH CHART

 *AE Antique English	 PB Polished Brass
 *AEM Antique English Matte	 *PB/NL Polished Brass / No Lacquer
 *BARC Barcelona	 PC Polished Chrome
 *BRZ Bronze	 PN Polished Nickel
 CHBRZ Chocolate Bronze	 RSTBRZ Rust Bronze Sierra Collection Only
 DKBRZ Dark Bronze Sierra Collection Only	 SB Satin Brass
 MB Matte Black	 SN Satin Nickel
 *PA Polished Antique	*Living Finishes



**A6420-12-SN**  
12" TOWEL BAR

- A6420-12 12" TOWEL BAR
- A6420-18 18" TOWEL BAR
- A6420-24 24" TOWEL BAR



**A6427-18-PC**  
18" GLASS SHELF WITH TOWEL BAR

- A6427-24 24" GLASS SHELF WITH TOWEL BAR



**A6465R-MB**  
RIGHT HAND SINGLE POST TISSUE  
HOLDER WITH GLASS SHELF

**A6465L-PB**  
LEFT HAND SINGLE POST TISSUE  
HOLDER WITH GLASS SHELF



**AVAILABLE FINISHES**

- MB** Matte Black
- PB** Polished Brass
- PB/NL** Polished Brass/No Lacquer
- PC** Polished Chrome
- PN** Polished Nickel
- SB** Satin Brass
- SN** Satin Nickel

A6400 LINEAR SERIES		Weight	Description	List Price Group 1 (PB, PB/NL, PC)	List Price Group 2 (PN, SN)	List Price Group 3 (MB, SB)	List Price Group 4 *SPECIAL FINISHES
<b>A6420-8</b> <b>A6420-12</b> <b>A6420-18</b> <b>A6420-24</b>	 	1lb 1.4lb 1.6lbs 2.4lbs	8" Towel Bar 12" Towel Bar 18" Towel Bar 24" Towel Bar	\$ 284.95 \$ 319.95 \$ 359.95 \$ 429.95	\$ 314.95 \$ 349.95 \$ 389.95 \$ 459.95	\$ 364.95 \$ 399.95 \$ 439.95 \$ 514.95	\$ 440.00 \$ 480.00 \$ 525.00 \$ 595.00
<b>A6427-18</b> <b>A6427-24</b>	 	6lbs 6lbs	18" Glass Shelf with Towel Bar 24" Glass Shelf with Towel Bar	\$ 574.95 \$ 624.95	\$ 624.95 \$ 699.95	\$ 694.95 \$ 779.95	\$ 780.00 \$ 870.00
<b>A6465L</b>		2lbs	Left Hand single Post Tissue Holder with Glass Shelf	\$ 259.95	\$ 279.95	\$ 319.95	\$ 380.00
<b>A6465R</b>		2lbs	Right Hand single Post Tissue Holder with Glass Shelf	\$ 259.95	\$ 279.95	\$ 319.95	\$ 380.00

\* If your desired Alno, Inc. finish is not listed in Group 1, 2, or 3 please use Group 4 for Special finish pricing and see page #A for its special order form. Group 4 products are non-cancelable and non-returnable. Please allow 4-6 weeks for all special order finishes.



**A6466L-PC**  
LEFT HAND SINGLE POST  
TISSUE OR TOWEL HOLDER



**A6481-SN**  
1 3/4" ROBE HOOK



**A6466R-PB**  
RIGHT HAND SINGLE POST  
TISSUE OR TOWEL HOLDER



**A6482-MB**  
2 1/8" ROBE HOOK



**A6484-SB**  
DOUBLE ROBE HOOK



**A6485-PN**  
TRIPLE SWIVEL HOOK

**AVAILABLE FINISHES**



**MB**  
Matte Black



**PB**  
Polished Brass



**PB/NL**  
Polished Brass/No Lacquer



**PC**  
Polished Chrome



**PN**  
Polished Nickel



**SB**  
Satin Brass



**SN**  
Satin Nickel

A6400 LINEAR SERIES		Weight	Description	List Price Group 1 (PB, PB/NL, PC)	List Price Group 2 (PN, SN)	List Price Group 3 (MB, SB)	List Price Group 4 *SPECIAL FINISHES
Stock No.							
A6466L		15oz	Left Hand Single Post Tissue or Towel Holder	\$ 169.95	\$ 194.95	\$ 229.95	\$ 280.00
A6466R		15oz	Right Hand Single Post Tissue or Towel Holder	\$ 169.95	\$ 194.95	\$ 229.95	\$ 280.00
A6481		5oz	1-3/4" Robe Hook	\$ 49.95	\$ 54.95	\$ 59.95	\$ 80.00
A6482		6oz	2-1/8" Robe Hook	\$ 59.95	\$ 64.95	\$ 69.95	\$ 95.00
A6484		7oz	Double Robe Hook	\$ 99.95	\$ 114.95	\$ 129.95	\$ 165.00
A6485		8oz	Triple Swivel Hook	\$ 164.95	\$ 189.95	\$ 199.95	\$ 245.00

\* If your desired Alno, Inc. finish is not listed in Group 1, 2, or 3 please use Group 4 for Special finish pricing and see page #A for its special order form. Group 4 products are non-cancelable and non-returnable. Please allow 4-6 weeks for all special order finishes.

Professionally designed by Tyson Atwell



**A6520-12-SN**  
12" TOWEL BAR

- A6520-18 18" TOWEL BAR
- A6520-24 24" TOWEL BAR
- A6520-30 30" TOWEL BAR



**A6525-25-PC** 25" DOUBLE TOWEL BAR

**A6525-31** 31" DOUBLE TOWEL BAR



**A0012-PC**  
12" GRAB BAR ONLY

- A0018 18" GRAB BAR ONLY
- A0024 24" GRAB BAR ONLY
- A0030 30" GRAB BAR ONLY



**A6524-PC**  
GRAB BAR BRACKETS ONLY  
Sold separately in pairs  
\*Only available in PB, PB/NL, PC, PN, SN

**AVAILABLE FINISHES**

- BRZ** Bronze
- CHBRZ** Chocolate Bronze
- PB** Polished Brass
- PB/NL** Polished Brass/No Lacquer
- PC** Polished Chrome
- PN** Polished Nickel
- SN** Satin Nickel

A6500 CUBE SERIES		Weight	Description	List Price Group 1 (PB, PB/NL, PC)	List Price Group 2 (PN, SN)	List Price Group 3 (BRZ, CHBRZ)	List Price Group 4 *SPECIAL FINISHES
A6520-12 A6520-18 A6520-24 A6520-30		1lb 1.6lbs 2.4lbs 2.8lbs	12" Towel Bar 18" Towel Bar 24" Towel Bar 30" Towel Bar	\$ 189.95 \$ 214.95 \$ 234.95 \$ 239.95	\$ 209.95 \$ 244.95 \$ 264.95 \$ 274.95	\$ 229.95 \$ 274.95 \$ 294.95 \$ 304.95	\$ 265.00 \$ 320.00 \$ 340.00 \$ 355.00
A6524		1.8lbs	Grab Bar Brackets Only <b>Only Available in PB, PB/NL, PC, PN, SN</b> <b>For all other finishes see Group 4</b> <b>Sold in Pairs</b> <b>(Bars Sold Separately)</b>	\$ 179.95	\$ 199.95	N/A	\$ 265.00
A0012 A0018 A0024 A0030		1.6lbs 2lbs 2.6lbs 3lb	12" Grab Bar Only 18" Grab Bar Only 24" Grab Bar Only 30" Grab Bar Only <b>Only Available in PB, PB/NL, PC, PN, SN</b> <b>For all other finishes see Group 4</b>	\$ 209.95 \$ 264.95 \$ 329.95 \$ 384.95	\$ 239.95 \$ 304.95 \$ 379.95 \$ 439.95	N/A N/A N/A N/A	\$ 290.00 \$ 360.00 \$ 440.00 \$ 510.00
A6525-25		3.6lbs	25" Double Towel Bar	\$ 445.95	\$ 509.95	\$ 549.95	\$ 600.00

\* If your desired Alno, Inc. finish is not listed in Group 1, 2, or 3 please use Group 4 for Special finish pricing and see page #A for its special order form. Group 4 products are non-cancelable and non-returnable. Please allow 4-6 weeks for all special order finishes.



**A6530-SN**  
SOAP HOLDER WITH DISH



**A6527-25-PN**  
25" GLASS SHELF WITH TOWEL BAR



**A6540-BRZ**  
TOWEL RING



**A6526-24-BRZ**  
24" TOWEL RACK

**AVAILABLE FINISHES**



**BRZ**  
Bronze



**CHBRZ**  
Chocolate Bronze



**PB**  
Polished Brass



**PB/NL**  
Polished Brass/No Lacquer



**PC**  
Polished Chrome



**PN**  
Polished Nickel



**SN**  
Satin Nickel

A6500 CUBE SERIES		Weight	Description	List Price Group 1 (PB, PB/NL, PC)	List Price Group 2 (PN, SN)	List Price Group 3 (BRZ, CHBRZ)	List Price Group 4 *SPECIAL FINISHES
Stock No.							
A6525-31		4lbs	31" Double Towel Bar	\$ 499.95	\$ 574.95	\$ 624.95	\$ 685.00
A6526-24		4.8lbs	24" Towel Rack	\$ 724.95	\$ 794.95	\$ 844.95	\$ 925.00
A6527-25		6lbs	25" Glass Shelf with Towel Bar	\$ 494.95	\$ 549.95	\$ 579.95	\$ 645.00
A6530		1lb	Soap Holder with Dish	\$ 124.95	\$ 134.95	\$ 144.95	\$ 185.00
A6540		12oz	Towel Ring	\$ 134.95	\$ 149.95	\$ 164.95	\$ 215.00

\* If your desired Alno, Inc. finish is not listed in Group 1, 2, or 3 please use Group 4 for Special finish pricing and see page #A for its special order form. Group 4 products are non-cancelable and non-returnable. Please allow 4-6 weeks for all special order finishes.

Professionally designed by Tyson Atwell



**A6560-BRZ**  
TISSUE HOLDER

**A9045-SN**  
SHOWER ROD ONLY



**A6546-SN**  
SHOWER ROD BRACKETS ONLY



**A6550-SN**  
SHELF BRACKETS ONLY



**A6550-18-PB**  
18" GLASS SHELF WITH BRACKETS

**A6550-24**  
24" GLASS SHELF WITH BRACKETS



**A6562-SN**  
SWING TISSUE HOLDER

**AVAILABLE FINISHES**



A6500 CUBE SERIES		Weight	Description	List Price Group 1 (PB, PB/NL, PC)	List Price Group 2 (PN, SN)	List Price Group 3 (BRZ, CHBRZ)	List Price Group 4 *SPECIAL FINISHES
A6546		1.8lbs	Shower Rod Brackets (priced per pair)	\$ 149.95	\$ 159.95	\$ 179.95	\$ 230.00
A9045		3.4lbs	6' Shower Rod Only For all Series (1" Diameter)	\$ 319.95	\$ 369.95	\$ 419.95	\$ 495.00
A6550		1.8lbs	Shelf Brackets Only (priced per pair)	\$ 144.95	\$ 154.95	\$ 169.95	\$ 225.00
A6550-18 A6550-24		4lbs 4.8lbs	18" Glass Shelf with Brackets 24" Glass Shelf with Brackets	\$ 204.95 \$ 219.95	\$ 214.95 \$ 229.95	\$ 229.95 \$ 244.95	\$ 285.00 \$ 300.00
A6560		1.6lbs	Tissue Holder	\$ 174.95	\$ 194.95	\$ 204.95	\$ 255.00
A6562		2lbs	Swing Tissue Holder	\$ 209.95	\$ 229.95	\$ 249.95	\$ 305.00

\* If your desired Alno, Inc. finish is not listed in Group 1, 2, or 3 please use Group 4 for Special finish pricing and see page #A for its special order form. Group 4 products are non-cancelable and non-returnable. Please allow 4-6 weeks for all special order finishes.

CUBE

Professionally designed by Tyson Atwell

**A6580-SN**  
ROBE HOOK



**A6566-PB**  
SINGLE POST TISSUE HOLDER



**A6570-PN**  
TUMBLER HOLDER  
WITH TUMBLER

**A6567-PC**  
RESERVE TISSUE HOLDER



**A6584-BRZ**  
DOUBLE ROBE HOOK



**AVAILABLE FINISHES**



A6500 CUBE SERIES		Weight	Description	List Price Group 1 (PB, PB/NL, PC)	List Price Group 2 (PN, SN)	List Price Group 3 (BRZ, CHBRZ)	List Price Group 4 *SPECIAL FINISHES
Stock No.							
A6566		1lb	Single Post Tissue Holder	\$ 149.95	\$ 164.95	\$ 174.95	\$ 225.00
A6567		1.6lbs	Reserve Tissue Holder	\$ 154.95	\$ 169.95	\$ 184.95	\$ 235.00
A6570		1lb	Tumbler Holder with Tumbler	\$ 124.95	\$ 134.95	\$ 144.95	\$ 185.00
A6580		7oz	Robe Hook	\$ 69.95	\$ 79.95	\$ 89.95	\$ 120.00
A6584		12oz	Double Robe Hook	\$ 124.95	\$ 134.95	\$ 149.95	\$ 190.00

\* If your desired Alno, Inc. finish is not listed in Group 1, 2, or 3 please use Group 4 for Special finish pricing and see page #A for its special order form. Group 4 products are non-cancelable and non-returnable. Please allow 4-6 weeks for all special order finishes.

Professionally designed by Tyson Atwell



**A6620-12-PN**  
12" TOWEL BAR

A6620-18 18" TOWEL BAR	A6620-24 24" TOWEL BAR	A6620-30 30" TOWEL BAR
---------------------------	---------------------------	---------------------------



**A6620-18-PB**  
18" TOWEL BAR

A6620-12 12" TOWEL BAR	A6620-24 24" TOWEL BAR	A6620-30 30" TOWEL BAR
---------------------------	---------------------------	---------------------------



**A6624-SN**  
GRAB BAR BRACKETS ONLY

Sold separately in pairs  
\*Only available in PB, PB/NL, PC, PN, SN



**A0012-SN**  
12" GRAB BAR ONLY

A0018 18" GRAB BAR ONLY	A0024 24" GRAB BAR ONLY	A0030 30" GRAB BAR ONLY
----------------------------	----------------------------	----------------------------



**A6625-24-SN**  
24" DOUBLE TOWEL BAR

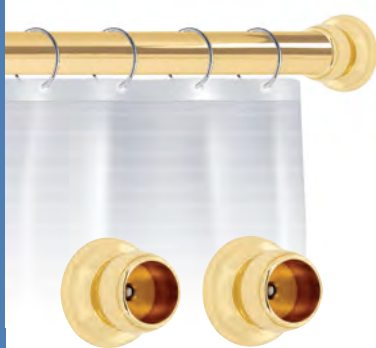
**A6625-30**  
30" DOUBLE TOWEL BAR

**AVAILABLE FINISHES**



A6600 ROYALE SERIES		Weight	Description	List Price Group 1 (PB, PB/NL, PC)	List Price Group 2 (PN, SN)	List Price Group 3 (BRZ, CHBRZ)	List Price Group 4 *SPECIAL FINISHES
A6620-12 A6620-18 A6620-24 A6620-30		14oz 1.4lbs 2lbs 2.4lbs	12" Towel Bar 18" Towel Bar 24" Towel Bar 30" Towel Bar	\$ 184.95 \$ 204.95 \$ 219.95 \$ 244.95	\$ 204.95 \$ 224.95 \$ 244.95 \$ 269.95	\$ 224.95 \$ 244.95 \$ 264.95 \$ 294.95	\$ 265.00 \$ 290.00 \$ 310.00 \$ 345.00
A6624		1.6lbs	Grab Bar Brackets Only <b>Only Available in PB, PB/NL, PC, PN, SN</b> <b>All other finishes see Group 4</b> <b>Sold in Pairs</b> <b>(Bars Sold Separately)</b>	\$ 174.95	\$ 194.95	N/A	\$ 260.00
A0012 A0018 A0024 A0030		1.6lbs 2lbs 2.6lbs 3lbs	12" Grab Bar Only 18" Grab Bar Only 24" Grab Bar Only 30" Grab Bar Only <b>Only Available in PB, PB/NL, PC, PN, SN</b> <b>All other finishes see Group 4</b>	\$ 209.95 \$ 264.95 \$ 329.95 \$ 384.95	\$ 239.95 \$ 304.95 \$ 379.95 \$ 439.95	N/A N/A N/A N/A	\$ 290.00 \$ 360.00 \$ 440.00 \$ 510.00
A6625-24 A6625-30		3lbs 3.6lbs	24" Double Towel Bar 30" Double Towel Bar	\$ 384.95 \$ 424.95	\$ 419.95 \$ 459.95	\$ 454.95 \$ 494.95	\$ 510.00 \$ 550.00

\* If your desired Alno, Inc. finish is not listed in Group 1, 2, or 3 please use Group 4 for Special finish pricing and see page #A for its special order form. Group 4 products are non-cancelable and non-returnable. Please allow 4-6 weeks for all special order finishes.



**A9045-PB**  
SHOWER ROD ONLY

Professionally designed by Tyson Atwell



**A6640-PN**  
TOWEL RING



**A6630-BRZ**  
SOAP HOLDER WITH DISH

**A6646-PB**  
SHOWER ROD BRACKETS ONLY



**A6626-24-PB**  
24" TOWEL RACK

**AVAILABLE FINISHES**

- BRZ**  
Bronze
- CHBRZ**  
Chocolate Bronze
- PB**  
Polished Brass
- PB/NL**  
Polished Brass/No Lacquer
- PC**  
Polished Chrome
- PN**  
Polished Nickel
- SN**  
Satin Nickel

A6600 ROYALE SERIES		Weight	Description	List Price Group 1 (PB, PB/NL, PC)	List Price Group 2 (PN, SN)	List Price Group 3 (BRZ, CHBRZ)	List Price Group 4 *SPECIAL FINISHES
Stock No.							
A6626-24		4.4lbs	24" Towel Rack	\$ 644.95	\$ 689.95	\$ 724.95	\$ 785.00
A6630		1lb	Soap Holder with Dish	\$ 124.95	\$ 134.95	\$ 144.95	\$ 185.00
A6640		9.6oz	Towel Ring	\$ 129.95	\$ 139.95	\$ 154.95	\$ 200.00
A6646		1.2lbs	Shower Rod Brackets (priced per pair)	\$ 124.95	\$ 134.95	\$ 154.95	\$ 200.00
A9045		3.4lbs	6' Shower Rod Only For all Series (1" Diameter)	\$ 319.95	\$ 369.95	\$ 419.95	\$ 495.00

\* If your desired Alno, Inc. finish is not listed in Group 1, 2, or 3 please use Group 4 for Special finish pricing and see page #A for its special order form. Group 4 products are non-cancelable and non-returnable. Please allow 4-6 weeks for all special order finishes.

Professionally designed by Tyson Atwell



**A6650-SN**  
SHELF BRACKETS ONLY



**A6660-BRZ**  
TISSUE HOLDER



**A6650-18-SN**  
18" GLASS SHELF WITH BRACKETS

**A6650-24**  
24" GLASS SHELF WITH BRACKETS



**A6662-PN**  
SWING TISSUE HOLDER

**AVAILABLE FINISHES**



A6600 ROYALE SERIES		Weight	Description	List Price Group 1 (PB, PB/NL, PC)	List Price Group 2 (PN, SN)	List Price Group 3 (BRZ, CHBRZ)	List Price Group 4 *SPECIAL FINISHES
Stock No.							
A6650		1.4lbs	Shelf Brackets Only (priced per pair)	\$ 104.95	\$ 114.95	\$ 124.95	\$ 170.0
A6650-18 A6650-24		3.4lbs 4.2lbs	18" Glass Shelf with Brackets 24" Glass Shelf with Brackets	\$ 164.95 \$ 179.95	\$ 174.95 \$ 189.95	\$ 184.95 \$ 199.95	\$ 230.00 \$ 245.00
A6660		1lb	Tissue Holder	\$ 184.95	\$ 199.95	\$ 219.95	\$ 270.00
A6662		1.4lbs	Swing Tissue Holder	\$ 214.95	\$ 234.95	\$ 254.95	\$ 310.00

\* If your desired AIno, Inc. finish is not listed in Group 1, 2, or 3 please use Group 4 for Special finish pricing and see page #A for its special order form. Group 4 products are non-cancelable and non-returnable. Please allow 4-6 weeks for all special order finishes.



**A6680-CHBRZ**  
ROBE HOOK

**A6670-PC**  
TUMBLER HOLDER  
WITH TUMBLER



**A6684-SN**  
DOUBLE ROBE HOOK



**A6666-PB**  
SINGLE POST TISSUE HOLDER



**A6667-BRZ**  
RESERVE TISSUE HOLDER

### AVAILABLE FINISHES



**BRZ**  
Bronze



**CHBRZ**  
Chocolate Bronze



**PB**  
Polished Brass



**PB/NL**  
Polished Brass/No Lacquer



**PC**  
Polished Chrome



**PN**  
Polished Nickel



**SN**  
Satin Nickel

A6600 ROYALE SERIES		Weight	Description	List Price Group 1 (PB, PB/NL, PC)	List Price Group 2 (PN, SN)	List Price Group 3 (BRZ, CHBRZ)	List Price Group 4 *SPECIAL FINISHES
Stock No.							
A6666		12oz	Single Post Tissue Holder	\$ 134.95	\$ 149.95	\$ 164.95	\$ 210.00
A6667		1.2lbs	Reserve Tissue Holder	\$ 164.95	\$ 179.95	\$ 194.95	\$ 245.00
A6670		1lb	Tumbler Holder with Tumbler	\$ 124.95	\$ 134.95	\$ 144.95	\$ 185.00
A6680		7oz	Robe Hook	\$ 69.95	\$ 74.95	\$ 84.95	\$ 115.00
A6684		12oz	Double Robe Hook	\$ 119.95	\$ 129.95	\$ 144.95	\$ 185.00

\* If your desired Alno, Inc. finish is not listed in Group 1, 2, or 3 please use Group 4 for Special finish pricing and see page #A for its special order form. Group 4 products are non-cancelable and non-returnable. Please allow 4-6 weeks for all special order finishes.

Professionally designed by Tyson Atwell



**A6720-12-PC**  
12" TOWEL BAR

<b>A6720-18</b> 18" TOWEL BAR	<b>A6720-24</b> 24" TOWEL BAR	<b>A6720-30</b> 30" TOWEL BAR
----------------------------------	----------------------------------	----------------------------------



**A0012-PC**  
12" GRAB BAR ONLY

<b>A0018</b> 18" GRAB BAR ONLY	<b>A0024</b> 24" GRAB BAR ONLY	<b>A0030</b> 30" GRAB BAR ONLY
-----------------------------------	-----------------------------------	-----------------------------------



**A6720-18-SB**  
18" TOWEL BAR

<b>A6720-12</b> 12" TOWEL BAR	<b>A6720-24</b> 24" TOWEL BAR	<b>A6720-30</b> 30" TOWEL BAR
----------------------------------	----------------------------------	----------------------------------



**A6724-PC**  
GRAB BAR BRACKETS ONLY

Sold separately in pairs  
\*Only available in PB, PB/NL, PC, PN, SN



**A6725-24-BARC**  
24" DOUBLE TOWEL BAR

**A6725-30**  
30" DOUBLE TOWEL BAR

**AVAILABLE FINISHES**



A6700 CHARLIE'S SERIES		Weight	Description	List Price Group 1 (PB, PB/NL, PC)	List Price Group 2 (PN, SN)	List Price Group 3 (BARC, BRZ, CHBRZ, SB)	List Price Group 4 *SPECIAL FINISHES
<b>A6720-12</b> <b>A6720-18</b> <b>A6720-24</b> <b>A6720-30</b>		14oz 1.4lbs 2lbs 2.4lbs	12" Towel Bar 18" Towel Bar 24" Towel Bar 30" Towel Bar	\$ 179.95 \$ 199.95 \$ 224.95 \$ 259.95	\$ 199.95 \$ 219.95 \$ 244.95 \$ 279.95	\$ 219.95 \$ 239.95 \$ 264.95 \$ 299.95	\$ 260.00 \$ 285.00 \$ 310.00 \$ 350.00
	<b>A6724</b>	1.6lbs	Grab Bar Brackets Only <b>Only Available in PB, PB/NL, PC, PN, SN</b> For all other finishes see Group 4 <b>Sold in Pairs</b> <b>(Bars Sold Separately)</b>	\$ 169.95	\$ 184.95	N/A	\$ 250.00
	<b>A0012</b> <b>A0018</b> <b>A0024</b> <b>A0030</b>	1.6lbs 2lbs 2.6lbs 3lb	12" Grab Bar Only 18" Grab Bar Only 24" Grab Bar Only 30" Grab Bar Only	\$ 209.95 \$ 264.95 \$ 329.95 \$ 384.95	\$ 239.95 \$ 304.95 \$ 379.95 \$ 439.95	N/A N/A N/A N/A	\$ 290.00 \$ 360.00 \$ 440.00 \$ 510.00
	<b>A6725-24</b> <b>A6725-30</b>	3lbs 3.6lbs	24" Double Towel Bar 30" Double Towel Bar	\$ 394.95 \$ 439.95	\$ 439.95 \$ 489.95	\$ 479.95 \$ 524.95	\$ 535.00 \$ 585.00

\* If your desired Alno, Inc. finish is not listed in Group 1, 2, or 3 please use Group 4 for Special finish pricing and see page #A for its special order form. Group 4 products are non-cancelable and non-returnable. Please allow 4-6 weeks for all special order finishes.

Professionally designed by Tyson Atwell



**A9045-SN**  
SHOWER ROD ONLY



**A6746-SN**  
SHOWER ROD BRACKETS ONLY



**A6726-24-PB**  
24" TOWEL RACK



**A6740-BARC**  
TOWEL RING

**A6730-PN**  
SOAP HOLDER WITH DISH



**AVAILABLE FINISHES**

- BARC**  
Barcelona
- BRZ**  
Bronze
- CHBRZ**  
Chocolate Bronze
- PB**  
Polished Brass
- PB/NL**  
Polished Brass  
No Lacquer
- PC**  
Polished Chrome
- PN**  
Polished Nickel
- SB**  
Satin Brass
- SN**  
Satin Nickel

A6700 CHARLIE'S SERIES		Weight	Description	List Price Group 1 (PB, PB/NL, PC)	List Price Group 2 (PN, SN)	List Price Group 3 (BARC, BRZ, CHBRZ, SB)	List Price Group 4 *SPECIAL FINISHES
Stock No.							
A6726-24		4.4lbs	24" Towel Rack	\$ 644.95	\$ 709.95	\$ 744.95	\$ 815.00
A6730		1lb	Soap Holder with Dish	\$ 114.95	\$ 124.95	\$ 134.95	\$ 175.00
A6740		9.6oz	Towel Ring	\$ 124.95	\$ 134.95	\$ 144.95	\$ 190.00
A6746		1.2lbs	Shower Rod Brackets (priced per pair)	\$ 134.95	\$ 144.95	\$ 154.95	\$ 200.00
A9045		3.4lbs	6' Shower Rod Only For all Series (1" Diameter)	\$ 319.95	\$ 369.95	\$ 419.95	\$ 495.00

\* If your desired Alno, Inc. finish is not listed in Group 1, 2, or 3 please use Group 4 for Special finish pricing and see page #A for its special order form. Group 4 products are non-cancelable and non-returnable. Please allow 4-6 weeks for all special order finishes.

Professionally designed by Tyson Atwell



**A6760-PN**  
TISSUE HOLDER



**A6762-BRZ**  
SWING TISSUE HOLDER



**A6766-PB**  
SINGLE POST TISSUE HOLDER



**A6750-18-PB**  
18" GLASS SHELF WITH BRACKETS

**A6750-24**  
24" GLASS SHELF WITH BRACKETS



**A6750-CHBRZ**  
SHELF BRACKETS ONLY

**AVAILABLE FINISHES**



A6700 CHARLIE'S SERIES		Weight	Description	List Price Group 1 (PB, PB/NL, PC)	List Price Group 2 (PN, SN)	List Price Group 3 (BARC, BRZ, CHBRZ, SB)	List Price Group 4 *SPECIAL FINISHES
A6750		1.4lbs	Shelf Brackets Only (priced per pair)	\$ 104.95	\$ 114.95	\$ 124.95	\$ 170.00
A6750-18 A6750-24		3.4lbs 4.2lbs	18" Glass Shelf with Brackets 24" Glass Shelf with Brackets	\$ 164.95 \$ 179.95	\$ 174.95 \$ 189.95	\$ 184.95 \$ 199.95	\$ 230.00 \$ 245.00
A6760		1lb	Tissue Holder	\$ 159.95	\$ 174.95	\$ 189.95	\$ 240.00
A6762		1.4lbs	Swing Tissue Holder	\$ 184.95	\$ 204.95	\$ 224.95	\$ 280.00
A6766		12oz	Single Post Tissue Holder	\$ 124.95	\$ 139.95	\$ 154.95	\$ 200.00

\* If your desired AIno, Inc. finish is not listed in Group 1, 2, or 3 please use Group 4 for Special finish pricing and see page #A for its special order form. Group 4 products are non-cancelable and non-returnable. Please allow 4-6 weeks for all special order finishes.



**A6767-SN**  
RESERVE TISSUE HOLDER



**A6770-SN**  
TUMBLER HOLDER  
WITH TUMBLER



**A6784-PN**  
DOUBLE ROBE HOOK



**A6780-SB**  
ROBE HOOK

AVAILABLE FINISHES



A6700 CHARLIE'S SERIES		Weight	Description	List Price Group 1 (PB, PB/NL, PC)	List Price Group 2 (PN, SN)	List Price Group 3 (BARC, BRZ, CHBRZ, SB)	List Price Group 4 *SPECIAL FINISHES
Stock No.							
A6767		1.2lbs	Reserve Tissue Holder	\$ 139.95	\$ 154.95	\$ 169.95	\$ 220.00
A6770		1lb	Tumbler Holder with Tumbler	\$ 114.95	\$ 124.95	\$ 134.95	\$ 175.00
A6780		7oz	Robe Hook	\$ 69.95	\$ 74.95	\$ 84.95	\$ 115.00
A6784		12oz	Double Robe Hook	\$ 124.95	\$ 134.95	\$ 149.95	\$ 190.00

\* If your desired Alno, Inc. finish is not listed in Group 1, 2, or 3 please use Group 4 for Special finish pricing and see page #A for its special order form. Group 4 products are non-cancelable and non-returnable. Please allow 4-6 weeks for all special order finishes.



**A6820-8-PN**  
8" GUEST TOWEL BAR



**A6820-18-PB**  
18" TOWEL BAR

**A6820-12**  
12" TOWEL BAR

**A6820-24**  
24" TOWEL BAR

**A6820-30**  
30" TOWEL BAR



**A6835-PC**  
COUNTERTOP SOAP HOLDER WITH DISH



**A6840-BRZ**  
TOWEL RING



**A6850-18-PC**  
18" GLASS SHELF WITH BRACKETS

**A6850-24**  
24" GLASS SHELF WITH BRACKETS



**A6850-SN**  
SHELF BRACKETS ONLY

**AVAILABLE FINISHES**



A6800 LUNA SERIES				List Price Group 1	List Price Group 2	List Price Group 3	List Price Group 4
Stock No.		Weight	Description	(PB, PB/NL, PC)	(PN, SN)	(BRZ, SB)	*SPECIAL FINISHES
A6820-8		14oz	8" Guest Towel Bar	\$ 159.95	\$ 174.95	\$ 189.95	\$ 225.00
A6820-12 A6820-18 A6820-24 A6820-30		1lb 1.6lbs 2lbs 2.4lbs	12" Towel Bar 18" Towel Bar 24" Towel Bar 30" Towel Bar	\$ 164.95 \$ 174.95 \$ 189.95 \$ 209.95	\$ 179.95 \$ 194.95 \$ 209.95 \$ 229.95	\$ 194.95 \$ 214.95 \$ 229.95 \$ 249.95	\$ 235.00 \$ 260.00 \$ 275.00 \$ 300.00
A6835		1.6lbs	Countertop Soap Holder with Dish	\$ 124.95	\$ 139.95	\$ 149.95	\$ 190.00
A6840		9.6oz	Towel Ring	114.95	\$ 124.95	\$ 134.95	\$ 180.00
A6850		1.6oz	Shelf Brackets Only (priced per pair)	\$ 159.95	\$ 169.95	\$ 179.95	\$ 225.00
A6850-18 A6850-24		3.6lbs 4.4lbs	18" Glass Shelf with Brackets 24" Glass Shelf with Brackets	\$ 219.95 \$ 234.95	\$ 229.95 \$ 244.95	\$ 239.95 \$ 254.95	\$ 285.00 \$ 300.00

\* If your desired AIno, Inc. finish is not listed in Group 1, 2, or 3 please use Group 4 for Special finish pricing and see page #A for its special order form. Group 4 products are non-cancelable and non-returnable. Please allow 4-6 weeks for all special order finishes.



**A6860-PB**  
TISSUE HOLDER



**A6866R-PC** RIGHT HAND  
RIGHT HAND SINGLE POST TISSUE  
HOLDER OR TOWEL HOLDER

**A6866L-BRZ** LEFT HAND  
LEFT HAND SINGLE POST TISSUE  
HOLDER OR TOWEL HOLDER



**A6875-SN**  
COUNTERTOP TUMBLER  
HOLDER WITH DISH

**A6880-SB**  
ROBE HOOK



**A6885-PB**  
TRIPLE SWIVEL ROBE HOOK

**AVAILABLE FINISHES**



A6800 LUNA SERIES		Weight	Description	List Price Group 1 (PB, PB/NL, PC)	List Price Group 2 (PN, SN)	List Price Group 3 (BRZ, SB)	List Price Group 4 *SPECIAL FINISHES
Stock No.							
A6860		1lb	Tissue Holder	\$ 164.95	\$ 174.95	\$ 189.95	\$ 240.00
A6866L		12oz	Single Post Tissue Holder or Towel Holder-Left Hand	\$ 104.95	\$ 114.95	\$ 124.95	\$ 170.00
A6866R		12oz	Single Post Tissue Holder or Towel Holder-Right Hand	\$ 104.95	\$ 114.95	\$ 124.95	\$ 170.00
A6875		1.6lbs	Countertop Tumbler Holder with Dish	\$ 124.95	\$ 139.95	\$ 149.95	\$ 190.00
A6880		8oz	Robe Hook	\$ 59.95	\$ 64.95	\$ 74.95	\$ 105.00
A6885		12oz	Triple Swivel Robe Hook	\$ 149.95	\$ 159.95	\$ 174.95	\$ 225.00

\* If your desired Alno, Inc. finish is not listed in Group 1, 2, or 3 please use Group 4 for Special finish pricing and see page #A for its special order form. Group 4 products are non-cancelable and non-returnable. Please allow 4-6 weeks for all special order finishes.



**A7020-12-PC**  
12" TOWEL BAR

**A7020-18**  
18" TOWEL BAR

**A7020-24**  
24" TOWEL BAR

**A7020-30**  
30" TOWEL BAR



**A7060-PN**  
TISSUE HOLDER

**A7066-BRZ**  
SINGLE POST  
TISSUE HOLDER



**A7080-PC**  
ROBE HOOK



**A7099-SN**  
ROBE HOOK



**A7040-PN**  
TOWEL RING

**AVAILABLE FINISHES**



**BRZ**  
Bronze



**PB/NL**  
Polished Brass/No Lacquer



**PC**  
Polished Chrome



**PN**  
Polished Nickel



**SN**  
Satin Nickel

Spa I and Spa II (A7000 & A7100) products work best, if secured to a wall stud or cross brace within the wall, using the screws provided. It is recommended that Spa I & Spa II (A7000 & A7100) products are mounted to a wall stud or cross brace within the wall. Alno, Inc. is not responsible for improper mounting or mounting this product onto drywall only.

A7000 SPA 1 SERIES				List Price Group 1 (PB/NL, PC)	List Price Group 2 (PN, SN)	List Price Group 3 (BRZ)	List Price Group 4 *SPECIAL FINISHES
Stock No.		Weight	Description				
A7020-12 A7020-18 A7020-24 A7020-30		1lb 1.2lbs 1.6lbs 2lbs	12" Towel Bar 18" Towel Bar 24" Towel Bar 30" Towel Bar	\$ 104.95 \$ 119.95 \$ 129.95 \$ 139.95	\$ 114.95 \$ 129.95 \$ 144.95 \$ 154.95	\$ 129.95 \$ 144.95 \$ 159.95 \$ 174.95	\$ 170.00 \$ 190.00 \$ 205.00 \$ 225.00
A7040		12oz	Towel Ring	\$ 74.95	\$ 89.95	\$ 104.95	\$ 150.00
A7060		1lb	Tissue Holder	\$ 109.95	\$ 119.95	\$ 134.95	\$ 185.00
A7066		12oz	Single Post Tissue Holder	\$ 84.95	\$ 94.95	\$ 104.95	\$ 150.00
A7080		4oz	Robe Hook	\$ 39.95	\$ 44.95	\$ 49.95	\$ 75.00
A7099		8oz	Robe Hook	\$ 59.95	\$ 64.95	\$ 69.95	\$ 40.00

\* If your desired Alno, Inc. finish is not listed in Group 1, 2, or 3 please use Group 4 for Special finish pricing and see page #A for its special order form. Group 4 products are non-cancelable and non-returnable. Please allow 4-6 weeks for all special order finishes.



**A7120-18-PN**  
18" TOWEL BAR

A7120-12 12" TOWEL BAR    A7120-24 24" TOWEL BAR    A7120-30 30" TOWEL BAR



**A7160-PC**  
TISSUE HOLDER

**A7166-PN**  
SINGLE POST  
TISSUE HOLDER



**A7180-SN**  
ROBE HOOK



**A7199-PC**  
ROBE HOOK



**A7140-BRZ**  
TOWEL RING



**AVAILABLE FINISHES**



**BRZ**  
Bronze



**PB/NL**  
Polished Brass/No Lacquer



**PC**  
Polished Chrome



**PN**  
Polished Nickel



**SN**  
Satin Nickel

Spa I and Spa II (A7000 & A7100) products work best, if secured to a wall stud or cross brace within the wall, using the screws provided. It is recommended that Spa I & Spa II (A7000 & A7100) products are mounted to a wall stud or cross brace within the wall. Alno, Inc. is not responsible for improper mounting or mounting this product onto drywall only.

A7100 SPA 2 SERIES				List Price Group 1	List Price Group 2	List Price Group 3	List Price Group 4
Stock No.		Weight	Description	(PB/NL, PC)	(PN, SN)	(BRZ)	*SPECIAL FINISHES
A7120-12 A7120-18 A7120-24 A7120-30		1lb 1.2lbs 1.8lbs 2lbs	12" Towel Bar 18" Towel Bar 24" Towel Bar 30" Towel Bar	\$ 129.95 \$ 144.95 \$ 154.95 \$ 174.95	\$ 139.95 \$ 154.95 \$ 169.95 \$ 189.95	\$ 154.95 \$ 169.95 \$ 189.95 \$ 209.95	\$ 195.00 \$ 215.00 \$ 235.00 \$ 260.00
A7140		12oz	6" Towel Ring	\$ 99.95	\$ 109.95	\$ 119.95	\$ 165.00
A7160		1lb	Tissue Holder	\$ 129.95	\$ 139.95	\$ 154.95	\$ 205.00
A7166		12oz	Single Post Tissue Holder	\$ 94.95	\$ 104.95	\$ 114.95	\$ 160.00
A7180		5oz	Robe Hook	\$ 44.95	\$ 49.95	\$ 54.95	\$ 80.00
A7199		8oz	Robe Hook	\$ 69.95	\$ 74.95	\$ 79.95	\$ 120.00

\* If your desired Alno, Inc. finish is not listed in Group 1, 2, or 3 please use Group 4 for Special finish pricing and see page #A for its special order form. Group 4 products are non-cancelable and non-returnable. Please allow 4-6 weeks for all special order finishes.



**AVAILABLE FINISHES**



A7200 ACRYLIC CONTEMPORARY SERIES					List Price Group 1 (PB, PB/NL, PC)	List Price Group 2 (PN, SN)	List Price Group 3 (MB, SB)	List Price Group 4 *SPECIAL FINISHES
Stock No.	Weight	Description	Material					
A7220-12	14.5oz		Brass/Acrylic		\$ 204.95	\$ 219.95	\$ 234.95	\$ 275.00
A7220-18	1 lb		Brass/Acrylic		\$ 219.95	\$ 234.95	\$ 249.95	\$ 295.00
A7220-24	1.2 lb		Brass/Acrylic		\$ 234.95	\$ 249.95	\$ 264.95	\$ 310.00
A7240	6.8 oz		Brass/Acrylic		\$ 129.95	\$ 139.95	\$ 149.95	\$ 195.00
A7266	7.5 oz		Brass/Acrylic		\$ 134.95	\$ 144.95	\$ 159.95	\$ 205.00
A7281	6.3 oz		Brass/Acrylic		\$ 119.95	\$ 129.95	\$ 139.95	\$ 175.00

REPLACEMENT CLEAR ACRYLIC BARS & RING ONLY			
Stock No.	Description	Material	List Price
B07212	12" Acrylic Bar Only for A7220-12	Acrylic	\$65.00
B07218	18" Acrylic Bar Only for A7220-18	Acrylic	\$70.00
B07224	24" Acrylic Bar Only for A7220-24	Acrylic	\$75.00
B07240	Ring Only for A7240	Acrylic	\$60.00

\* If your desired Alno, Inc. finish is not listed in Group 1, 2, or 3 please use Group 4 for Special finish pricing and see page #A for its special order form. Group 4 products are non-cancelable and non-returnable. Please allow 4-6 weeks for all special order finishes.

\*\* Over time, the acrylic portion of your Alno, Inc. product may scratch by its use. After installation, Alno, Inc. is not responsible for scratches or transformation to the acrylic. Acrylic care consists of no more than wiping it clean with a damp cloth. Chemicals should never be used.



**AVAILABLE FINISHES**



A7300 ACRYLIC ROYALE SERIES					List Price Group 1 (PB, PB/NL, PC)	List Price Group 2 (PN, SN)	List Price Group 3 (MB, SB)	List Price Group 4 *SPECIAL FINISHES
Stock No.	Weight		Description	Material				
A7320-12	1 lb		12" Towel Bar	Brass/Acrylic	\$ 189.95	\$ 204.95	\$ 219.95	\$ 260.00
A7320-18	1.2 lb		18" Towel Bar	Brass/Acrylic	\$ 204.95	\$ 214.95	\$ 229.95	\$ 275.00
A7320-24	1.4 lb		24" Towel Bar	Brass/Acrylic	\$ 214.95	\$ 229.95	\$ 244.95	\$ 290.00
A7340	9 oz		Towel Ring	Brass/Acrylic	\$ 114.95	\$ 124.95	\$ 134.95	\$ 180.00
A7362	15 oz		Swing Tissue Holder	Brass/Acrylic	\$ 209.95	\$ 219.95	\$ 234.95	\$ 285.00
A7366	9 oz		Single Post Tissue Holder	Brass/Acrylic	\$ 124.95	\$ 134.95	\$ 144.95	\$ 190.00
A7381	7.2 oz		Robe Hook	Brass/Acrylic	\$ 109.95	\$ 119.95	\$ 129.95	\$ 165.00

REPLACEMENT CLEAR ACRYLIC BARS & RING ONLY				
Stock No.	Description	Material	List Price	
B07312	12" Acrylic Bar Only for A7320-12	Acrylic	\$65.00	
B07318	18" Acrylic Bar Only for A7320-18	Acrylic	\$70.00	
B07324	24" Acrylic Bar Only for A7320-24	Acrylic	\$75.00	
B07340	Ring Only for A7340	Acrylic	\$60.00	

\* If your desired Alno, Inc. finish is not listed in Group 1, 2, or 3 please use Group 4 for Special finish pricing and see page #A for its special order form. Group 4 products are non-cancelable and non-returnable. Please allow 4-6 weeks for all special order finishes.

\*\* Over time, the acrylic portion of your Alno, Inc. product may scratch by its use. After installation, Alno, Inc. is not responsible for scratches or transformation to the acrylic. Acrylic care consists of no more than wiping it clean with a damp cloth. Chemicals should never be used.



**A7420-12-BRZ**  
12" TOWEL BAR

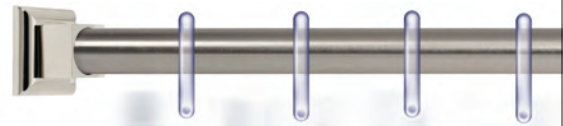
**A7420-18**  
18" TOWEL BAR

**A7420-24**  
24" TOWEL BAR

**A7420-30**  
30" TOWEL BAR



**A7446-PC**  
SHOWER ROD BRACKETS



**A9045-SN**  
SHOWER ROD ONLY



**A7430-PC**  
SOAP HOLDER WITH DISH

**A7440-PN**  
TOWEL RING



**AVAILABLE FINISHES**



**BRZ**

Bronze



**PB/NL**

Polished Brass/No Lacquer



**PC**

Polished Chrome



**PN**

Polished Nickel



**SN**

Satin Nickel

A7400 MANHATTAN SERIES				List Price Group 1	List Price Group 2	List Price Group 3	List Price Group 4
Stock No.		Weight	Description	(PB/NL, PC)	(PN, SN)	(BRZ)	*SPECIAL FINISHES
A7420-12		1.8lbs	12" Towel Bar	\$ 244.95	\$ 259.95	\$ 274.95	\$ 315.00
A7420-18		2lbs	18" Towel Bar	\$ 264.95	\$ 279.95	\$ 294.95	\$ 340.00
A7420-24		2.2lbs	24" Towel Bar	\$ 294.95	\$ 309.95	\$ 324.95	\$ 370.00
A7420-30		2.4lbs	30" Towel Bar	\$ 304.95	\$ 319.95	\$ 334.95	\$ 385.00
A7430		2.4lbs	Soap Holder with Dish	\$ 109.95	\$ 119.95	\$ 124.95	\$ 165.00
A7440		2lbs	Towel Ring	\$ 164.95	\$ 179.95	\$ 194.95	\$ 240.00
A9045		3.4lbs	6' Shower Rod Only For all Series (1" Diameter)	\$ 319.95	\$ 369.95	\$ 419.95	\$ 495.00
A7446		1.4lbs	Shower Rod Brackets (priced per pair)	\$ 129.95	\$ 139.95	\$ 154.95	\$ 200.00

\* If your desired AIno, Inc. finish is not listed in Group 1, 2, or 3 please use Group 4 for Special finish pricing and see page #A for its special order form. Group 4 products are non-cancelable and non-returnable. Please allow 4-6 weeks for all special order finishes.



**A7450-PN**  
SHELF BRACKETS ONLY

**A7450-18-SN**  
18" GLASS SHELF WITH BRACKETS



**A7450-24**  
24" GLASS SHELF WITH BRACKETS



**A7460-BRZ**  
TISSUE HOLDER

**A7466-BRZ**  
SINGLE POST TISSUE HOLDER



**A7462-PC**  
SWING TISSUE HOLDER

**A7470-PC**  
TUMBLER HOLDER  
WITH TUMBLER



**A7499-SN**  
ROBE HOOK



**AVAILABLE FINISHES**



**BRZ**  
Bronze



**PB/NL**  
Polished Brass/No Lacquer



**PC**  
Polished Chrome



**PN**  
Polished Nickel



**SN**  
Satin Nickel

A7400 MANHATTAN SERIES				List Price Group 1	List Price Group 2	List Price Group 3	List Price Group 4
Stock No.		Weight	Description	(PB/NL, PC)	(PN, SN)	(BRZ)	*SPECIAL FINISHES
A7450		1.2lbs	Shelf Brackets Only (priced per pair)	\$ 119.95	\$ 129.95	\$ 139.95	\$ 185.00
A7450-18 A7450-24		4.8lbs 5.8lbs	18" Glass Shelf with Brackets 24" Glass Shelf with Brackets	\$ 179.95 \$ 194.95	\$ 189.95 \$ 204.95	\$ 199.95 \$ 214.95	\$ 245.00 \$ 260.00
A7460		1.6lbs	Tissue Holder	\$ 219.95	\$ 234.95	\$ 254.95	\$ 305.00
A7462		3lbs	Swing Tissue Holder	\$ 274.95	\$ 294.95	\$ 314.95	\$ 365.00
A7466		1lb	Single Post Tissue Holder	\$ 154.95	\$ 164.95	\$ 174.95	\$ 220.00
A7470		2.2lbs	Tumbler Holder with Tumbler	\$ 109.95	\$ 119.95	\$ 124.95	\$ 165.00
A7499		1lb	Robe Hook	\$ 104.95	\$ 114.95	\$ 124.95	\$ 165.00

\* If your desired Alno, Inc. finish is not listed in Group 1, 2, or 3 please use Group 4 for Special finish pricing and see page #A for its special order form. Group 4 products are non-cancelable and non-returnable. Please allow 4-6 weeks for all special order finishes.



**A7520-18-PN**  
18" TOWEL BAR

**A7520-24**  
24" TOWEL BAR

**A7520-30**  
30" TOWEL BAR

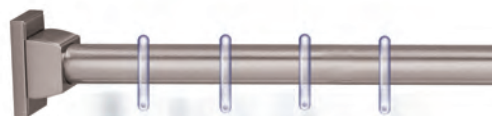


**A7530-PC**  
SOAP HOLDER WITH DISH



**A7540-SN**  
TOWEL RING

**A7546-PN**  
SHOWER ROD BRACKETS



**A9045-SN**  
SHOWER ROD ONLY

**AVAILABLE FINISHES**



**PB/NL**  
Polished Brass/No Lacquer



**PC**  
Polished Chrome



**PN**  
Polished Nickel



**SN**  
Satin Nickel

A7500 ARCH SERIES		Weight	Description	List Price Group 1 (PB/NL, PC)	List Price Group 2 (PN, SN)	List Price Group 4 *SPECIAL FINISHES
Stock No.						
A7520-18 A7520-24 A7520-30		1.8lb 2lb 2.2lb	18" Towel Bar 24" Towel Bar 30" Towel Bar	\$ 194.95 \$ 214.95 \$ 239.95	\$ 214.95 \$ 224.95 \$ 259.95	\$ 270.00 \$ 285.00 \$ 325.00
A7530		2.2lb	Soap Holder with Dish	\$ 104.95	\$ 114.95	\$ 165.00
A7540		1lb	7" Towel Ring	\$ 114.95	\$ 129.95	\$ 190.00
A9045		3.4lb	6' Shower Rod Only For all Series (1" Diameter)	\$ 319.95	\$ 369.95	\$ 495.00
A7546		1.5lb	Shower Rod Brackets (priced per pair)	\$ 149.95	\$ 164.95	\$ 215.00

\* If your desired Alno, Inc. finish is not listed in Group 1, 2, or 3 please use Group 4 for Special finish pricing and see page #A for its special order form. Group 4 products are non-cancelable and non-returnable. Please allow 4-6 weeks for all special order finishes.



**A7550-PN**  
SHELF BRACKETS ONLY



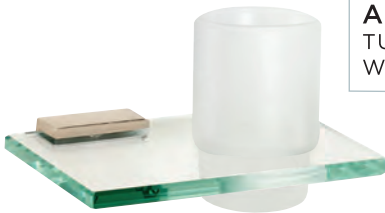
**A7550-18-SN**  
18" GLASS SHELF WITH BRACKETS

**A7550-24**  
24" GLASS SHELF WITH BRACKETS



**A7560-PC**  
TISSUE HOLDER

**A7566-PC**  
SINGLE POST  
TISSUE HOLDER



**A7570-PN**  
TUMBLER HOLDER  
WITH TUMBLER



**A7580-SN**  
ROBE HOOK

**A7599-PB/NL**  
ROBE HOOK



**AVAILABLE FINISHES**



**PB/NL**  
Polished Brass/No Lacquer



**PC**  
Polished Chrome



**PN**  
Polished Nickel



**SN**  
Satin Nickel

A7500 ARCH SERIES				List Price Group 1	List Price Group 2	List Price Group 4
Stock No.		Weight	Description	(PB/NL, PC)	(PN, SN)	*SPECIAL FINISHES
A7550		1lb	Shelf Brackets Only (priced per pair)	\$104.95	\$119.95	\$185.00
A7550-18 A7550-24		4.3lb 5.3lb	18" Glass Shelf with Brackets 24" Glass Shelf with Brackets	\$164.95 \$179.95	\$179.95 \$194.95	\$245.00 \$260.00
A7560		1.6lb	Tissue Holder	\$169.95	\$189.95	\$250.00
A7566		1.8lb	Single Post Tissue Holder	\$124.95	\$139.95	\$195.00
A7570		2lb	Tumbler Holder with Tumbler	\$104.95	\$114.95	\$165.00
A7580		10oz	Robe Hook	\$69.95	\$79.95	\$125.00
A7599		1lb	Robe Hook	\$84.95	\$94.95	\$155.00

\* If your desired Alno, Inc. finish is not listed in Group 1, 2, or 3 please use Group 4 for Special finish pricing and see page #A for its special order form. Group 4 products are non-cancelable and non-returnable. Please allow 4-6 weeks for all special order finishes.



**A7720-12-PB**  
12" TOWEL BAR

- A7720-18 18" TOWEL BAR
- A7720-24 24" TOWEL BAR
- A7720-30 30" TOWEL BAR



**A7725-24-BARC** 24" DOUBLE TOWEL BAR

**A7725-30** 30" DOUBLE TOWEL BAR



**A7724-PN**  
GRAB BAR BRACKETS



**A7726-24-PC**  
24" TOWEL RACK



**A0012-PN**  
12" GRAB BAR ONLY

- A0018 18" GRAB BAR
- A0024 24" GRAB BAR
- A0030 30" GRAB BAR



**A7740-SN**  
7" TOWEL RING



**A7730-PC**  
SOAP HOLDER WITH DISH

**AVAILABLE FINISHES**

- BARC**  
Barcelona
- PB**  
Polished Brass
- PB/NL**  
Polished Brass/No Lacquer
- PC**  
Polished Chrome
- PN**  
Polished Nickel
- SN**  
Satin Nickel

A7700 NICOLE SERIES		Weight	Description	List Price Group 1 (PB, PB/NL, PC)	List Price Group 2 (PN, SN)	List Price Group 3 (BARC)	List Price Group 4 *SPECIAL FINISHES
A7720-12 A7720-18 A7720-24 A7720-30		1.9lb 2lb 2.2lb 2.4lb	12" Towel Bar 18" Towel Bar 24" Towel Bar 30" Towel Bar	\$ 199.95 \$ 219.95 \$ 234.95 \$ 254.95	\$ 219.95 \$ 239.95 \$ 254.95 \$ 274.95	\$ 239.95 \$ 259.95 \$ 274.95 \$ 294.95	\$ 280.00 \$ 305.00 \$ 320.00 \$ 345.00
A7724		2lb	Grab Bar Brackets Only <b>Sold in Pairs</b> Bars Sold Separately Only Available in PB, PB/NL, PC, PN, SN For all other finishes see Group 4	\$ 169.95	\$ 184.95	N/A	\$ 250.00
A0012 A0018 A0024 A0030		1.6lb 2lb 2.6lb 3lb	12" Grab Bar Only 18" Grab Bar Only 24" Grab Bar Only 30" Grab Bar Only Only Available in PB, PB/NL, PC, PN, SN For all other finishes see Group 4	\$ 209.95 \$ 264.95 \$ 329.95 \$ 384.95	\$ 239.95 \$ 304.95 \$ 379.95 \$ 439.95	N/A N/A N/A N/A	\$ 290.00 \$ 360.00 \$ 440.00 \$ 510.00
A7725-24 A7725-30		3.9lb 4.8lb	24" Double Towel Bar 30" Double Towel Bar	\$ 394.95 \$ 429.95	\$ 429.95 \$ 469.95	\$ 469.95 \$ 499.95	\$ 525.00 \$ 560.00
A7726-24		7.4lb	24" Towel Rack	\$ 729.95	\$ 769.95	\$ 799.95	\$ 875.00
A7730		2.2lb	Soap Holder with Dish	\$ 114.95	\$ 124.95	\$ 134.95	\$ 175.00
A7740		2lb	7" Towel Ring	\$ 129.95	\$ 144.95	\$ 159.95	\$ 205.00

\* If your desired Aino, Inc. finish is not listed in Group 1, 2, or 3 please use Group 4 for Special finish pricing and see page #A for its special order form. Group 4 products are non-cancelable and non-returnable. Please allow 4-6 weeks for all special order finishes.



**A9045-SN**  
6' SHOWER ROD ONLY



**A7746-PB**  
SHOWER ROD BRACKETS



**A7760-SN**  
TISSUE HOLDER



**A7766-PB**  
SINGLE POST  
TISSUE HOLDER



**A7750-PC**  
SHELF BRACKETS ONLY

**A7780-PC**  
ROBE HOOK



**A7750-18-PC**  
18" GLASS SHELF WITH BRACKETS



**A7770-PC**  
TUMBLER HOLDER  
WITH TUMBLER

**A7799-PN**  
ROBE HOOK



**A7750-24**  
24" GLASS SHELF WITH BRACKETS

**AVAILABLE FINISHES**



**BARC**  
Barcelona



**PB**  
Polished Brass



**PB/NL**  
Polished Brass/No Lacquer



**PC**  
Polished Chrome



**PN**  
Polished Nickel



**SN**  
Satin Nickel

A7700 NICOLE SERIES		Weight	Description	List Price Group 1 (PB, PB/NL, PC)	List Price Group 2 (PN, SN)	List Price Group 3 (BARC)	List Price Group 4 *SPECIAL FINISHES
Stock No.							
A9045		3.4lb	6' Shower Rod Only For all Series (1" Diameter)	\$ 319.95	\$ 369.95	\$ 419.95	\$ 495.00
A7746		1.4lb	Shower Rod Brackets (priced per pair)	\$ 149.95	\$ 164.95	\$ 174.95	\$ 220.00
A7750		1lb	Shelf Brackets Only (priced per pair)	\$ 124.95	\$ 134.95	\$ 144.95	\$ 190.00
A7750-18 A7750-24		4.9lb 6lb	18" Glass Shelf with Brackets 24" Glass Shelf with Brackets	\$ 184.95 \$ 199.95	\$ 194.95 \$ 209.95	\$ 204.95 \$ 219.95	\$ 250.00 \$ 265.00
A7760		1.8lb	Tissue Holder	\$ 184.95	\$ 199.95	\$ 224.95	\$ 275.00
A7766		1.5lb	Single Post Tissue Holder	\$ 134.95	\$ 149.95	\$ 159.95	\$ 205.00
A7770		2lb	Tumbler Holder with Tumbler	\$ 114.95	\$ 124.95	\$ 134.95	\$ 175.00
A7780		1lb	Robe Hook	\$ 84.95	\$ 94.95	\$ 104.95	\$ 140.00
A7799		1lb	Robe Hook	\$ 114.95	\$ 124.95	\$ 139.95	\$ 185.00

\* If your desired Alno, Inc. finish is not listed in Group 1, 2, or 3 please use Group 4 for Special finish pricing and see page #A for its special order form. Group 4 products are non-cancelable and non-returnable. Please allow 4-6 weeks for all special order finishes.



**A7920-12-PC**  
12" TOWEL BAR

**A7920-18**  
18" TOWEL BAR

**A7920-24**  
24" TOWEL BAR

**A7920-30**  
30" TOWEL BAR



**A7940-PA**  
6" TOWEL RING

**A7930-PB**  
SOAP HOLDER WITH DISH



**A7950-18-PC**  
18" GLASS SHELF WITH BRACKETS



**A7950-24**  
24" GLASS SHELF WITH BRACKETS

**A7950-PN**  
SHELF BRACKETS ONLY



**A7966-PB**  
SINGLE POST  
TISSUE HOLDER

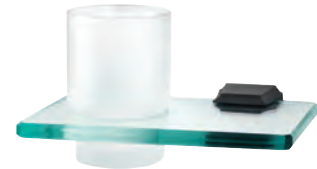


**A7960-SN**  
TISSUE HOLDER



**A7999-CHBRZ**  
ROBE HOOK

**A7970-BRZ**  
TUMBLER HOLDER  
WITH TUMBLER



**AVAILABLE FINISHES**



A7900 GEOMETRIC SERIES				List Price Group 1 (PB, PB/NL, PC)	List Price Group 2 (PN, SN)	List Price Group 3 (BRZ, CHBRZ, PA)	List Price Group 4 *SPECIAL FINISHES
Stock No.		Weight	Description				
A7920-12 A7920-18 A7920-24 A7920-30		2.6lb 2.8lb 3lb 3.2lb	12" Towel Bar 18" Towel Bar 24" Towel Bar 30" Towel Bar	\$ 244.95 \$ 254.95 \$ 264.95 \$ 284.95	\$ 264.95 \$ 274.95 \$ 284.95 \$ 304.95	\$ 284.95 \$ 304.95 \$ 314.95 \$ 329.95	\$ 325.00 \$ 350.00 \$ 360.00 \$ 380.00
A7930		2.8lb	Soap Holder with Dish	\$ 109.95	\$ 119.95	\$ 124.95	\$ 170.00
A7940		1.8lb	6" Towel Ring	\$ 159.95	\$ 174.95	\$ 189.95	\$ 235.00
A7950		1lb	Shelf Brackets Only (priced per pair)	\$ 114.95	\$ 124.95	\$ 134.95	\$ 180.00
A7950-18 A7950-24		4.2lb 5.8lb	18" Glass Shelf with Brackets 24" Glass Shelf with Brackets	\$ 174.95 \$ 189.95	\$ 184.95 \$ 199.95	\$ 194.95 \$ 209.95	\$ 240.00 \$ 255.00
A7960		2.3lb	Tissue Holder	\$ 214.95	\$ 224.95	\$ 249.95	\$ 300.00
A7966		1.9lb	Single Post Tissue Holder	\$ 144.95	\$ 159.95	\$ 174.95	\$ 220.00
A7970		2lb	Tumbler Holder with Tumbler	\$ 109.95	\$ 119.95	\$ 124.95	\$ 170.00
A7999		1lb	Robe Hook	\$ 104.95	\$ 114.95	\$ 124.95	\$ 170.00

\* If your desired AIno, Inc. finish is not listed in Group 1, 2, or 3 please use Group 4 for Special finish pricing and see page #A for its special order form. Group 4 products are non-cancelable and non-returnable. Please allow 4-6 weeks for all special order finishes.



**A8020-24-SN**  
24" TOWEL BAR

**A8020-12**  
12" TOWEL BAR

**A8020-18**  
18" TOWEL BAR

**A8020-30**  
30" TOWEL BAR



**A8022-18-PC**  
18" GRAB BAR  
(1" DIAMETER)

**A8022-24**  
24" GRAB BAR  
(1" DIAMETER)



**A8040-BARC**  
7" TOWEL RING



**A8023-18-PB**  
18" GRAB BAR  
(1 1/4" DIAMETER)

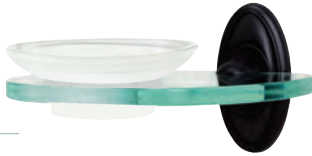
**A8023-24**  
24" GRAB BAR  
(1 1/4" DIAMETER)



**A8025-24-AE**  
24" DOUBLE  
TOWEL BAR

**A8025-30**  
30" DOUBLE  
TOWEL BAR

**A8030-BRZ**  
SOAP HOLDER  
WITH DISH



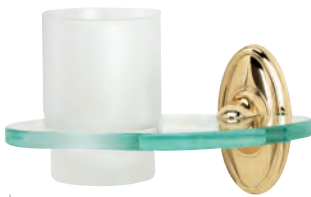
**A8026-24-PB**  
TOWEL RACK

**AVAILABLE FINISHES**



A8000 CLASSIC TRADITIONAL SERIES		Weight	Description	List Price Group 1 (PB, PB/NL, PC)	List Price Group 2 (PN, SN)	List Price Group 3 (AE, AEM, BARC, BRZ, CHBRZ, PA)	List Price Group 4 *SPECIAL FINISHES
A8020-12		2lb	12" Towel Bar	\$ 199.95	\$ 219.95	\$ 239.95	\$ 270.00
A8020-18		2.2lb	18" Towel Bar	\$ 214.95	\$ 229.95	\$ 249.95	\$ 295.00
A8020-24		2.4lb	24" Towel Bar	\$ 229.95	\$ 249.95	\$ 269.95	\$ 315.00
A8020-30		2.6lb	30" Towel Bar	\$ 249.95	\$ 269.95	\$ 289.95	\$ 340.00
A8022-18		3.4lb	18" Grab Bar (1" Diameter)	\$ 344.95	\$ 359.95	\$ 379.95	\$ 435.00
A8022-24		3.9lb	24" Grab Bar (1" Diameter)	\$ 369.95	\$ 389.95	\$ 409.95	\$ 470.00
A8023-18		4lb	18" Grab Bar (1 1/4" Diameter)	\$ 379.95	\$ 399.95	\$ 419.95	\$ 480.00
A8023-24		4.2lb	24" Grab Bar (1 1/4" Diameter)	\$ 424.95	\$ 444.95	\$ 464.95	\$ 550.00
A8025-24		3lb	24" Double Towel Bar	\$ 359.95	\$ 379.95	\$ 399.95	\$ 460.00
A8025-30		3.2lb	30" Double Towel Bar	\$ 384.95	\$ 414.95	\$ 434.95	\$ 500.00
A8026-24		6.6lb	24" Towel Rack	\$ 724.95	\$ 764.95	\$ 789.95	\$ 870.00
A8030		2lb	Soap Holder with Dish	\$ 129.95	\$ 139.95	\$ 149.95	\$ 190.00
A8040		1.4lb	7" Towel Ring	\$ 139.95	\$ 149.95	\$ 164.95	\$ 210.00

\* If your desired Alno, Inc. finish is not listed in Group 1, 2, or 3 please use Group 4 for Special finish pricing and see page #A for its special order form. Group 4 products are non-cancelable and non-returnable. Please allow 4-6 weeks for all special order finishes.



**A8070-PB**  
TUMBLER HOLDER WITH TUMBLER



**A8046-PC**  
SHOWER ROD BRACKETS



**A9045-SN**  
6' SHOWER ROD ONLY



**A8080-PC**  
ROBE HOOK



**A8066-CHBRZ**  
SINGLE POST  
TISSUE HOLDER



**A8050-BRZ**  
SHELF BRACKETS ONLY

**A8067-SN**  
RESERVE TISSUE HOLDER



**A8060-SN**  
TISSUE HOLDER



**A8099-PA**  
ROBE HOOK



**A8050-18-PC**  
18" GLASS SHELF WITH BRACKETS

**A8050-24**  
24" GLASS SHELF WITH BRACKETS

**AVAILABLE FINISHES**



A8000 CLASSIC TRADITIONAL SERIES		Weight	Description	List Price Group 1 (PB, PB/NL, PC)	List Price Group 2 (PN, SN)	List Price Group 3 (AE, AEM, BARC, BRZ, CHBRZ, PA)	List Price Group 4 *SPECIAL FINISHES
A9045		3.4lb	6' Shower Rod Only For all Series (1" Diameter)	\$ 319.95	\$ 369.95	\$ 419.95	\$ 495.00
A8046		1.8lb	Shower Rod Brackets (priced per pair)	\$ 139.95	\$ 149.95	\$ 159.95	\$ 205.00
A8050		1.8lb	Shelf Brackets Only (priced per pair)	\$ 154.95	\$ 164.95	\$ 174.95	\$ 220.00
A8050-18 A8050-24		4.2lb 5.7lb	18" Glass Shelf with Brackets 24" Glass Shelf with Brackets	\$ 214.95 \$ 229.95	\$ 224.95 \$ 239.95	\$ 234.95 \$ 249.95	\$ 280.00 \$ 295.00
A8060		2lb	Tissue Holder	\$ 209.95	\$ 219.95	\$ 234.95	\$ 285.00
A8066		1.5lb	Single Post Tissue Holder	\$ 139.95	\$ 149.95	\$ 164.95	\$ 210.00
A8067		1.7lb	Reserve Tissue Holder	\$ 184.95	\$ 199.95	\$ 214.95	\$ 265.00
A8070		2lb	Tumbler Holder with Tumbler	\$ 129.95	\$ 139.95	\$ 149.95	\$ 190.00
A8080		1lb	Robe Hook	\$ 89.95	\$ 99.95	\$ 109.95	\$ 140.00
A8099		1.2lb	Robe Hook	\$ 109.95	\$ 119.95	\$ 129.95	\$ 175.00

\* If your desired AIno, Inc. finish is not listed in Group 1, 2, or 3 please use Group 4 for Special finish pricing and see page #A for its special order form. Group 4 products are non-cancelable and non-returnable. Please allow 4-6 weeks for all special order finishes.



**A8220-18-DKBRZ**  
18" TOWEL BAR

**A8220-24**  
24" TOWEL BAR



**A8230-RSTBRZ**  
SOAP HOLDER WITH DISH

**A8240-RSTBRZ**  
6" TOWEL RING



**A8250-DKBRZ**  
SHELF BRACKETS ONLY



**A8250-18-DKBRZ**  
18" GLASS SHELF

**A8250-24**  
24" GLASS SHELF



**AVAILABLE FINISHES**



**DKBRZ**  
Dark Bronze



**RSTBRZ**  
Rust Bronze

A8200 SIERRA SERIES		Weight	Description	List Price Group 1 (DKBRZ, RSTBRZ)		
Stock No.						
A8220-18 A8220-24		4.5lb 5lb	18" Towel Bar 24" Towel Bar	\$ 424.95 \$ 454.95		
A8230		3lb	Soap Holder with Dish	\$ 169.95		
A8240		2lb	6" Towel Ring	\$ 219.95		
A8250		1.6lb	Shelf Brackets Only (priced per pair)	\$ 214.95		
A8250-18 A8250-24		5lb 6lb	18" Glass Shelf with Brackets 24" Glass Shelf with Brackets	\$ 269.95 \$ 284.95		

\* If your desired Alno, Inc. finish is not listed in Group 1, 2, or 3 please use Group 4 for Special finish pricing and see page #A for its special order form. Group 4 products are non-cancelable and non-returnable. Please allow 4-6 weeks for all special order finishes.



**A8266-RSTBRZ**  
SINGLE POST TISSUE HOLDER



**A8270-DKBRZ**  
TUMBLER HOLDER WITH TUMBLER



**A8275-RSTBRZ**  
ROBE HOOK



**A8260-RSTBRZ**  
TISSUE HOLDER



**A8299-DKBRZ**  
ROBE HOOK

**AVAILABLE FINISHES**



**DKBRZ**  
Dark Bronze



**RSTBRZ**  
Rust Bronze

A8200 SIERRA SERIES				List Price Group 1 (DKBRZ, RSTBRZ)		
Stock No.		Weight	Description			
A8260		2.7lb	Tissue Holder	\$ 259.95		
A8266		1.8lb	Single Post Tissue Holder	\$ 214.95		
A8270		2.9lb	Tumbler Holder with Tumbler	\$ 169.95		
A8275		1lb	Robe Hook	\$ 129.95		
A8299		1.2lb	Robe Hook	\$ 149.95		

\* If your desired AIno, Inc. finish is not listed in Group 1, 2, or 3 please use Group 4 for Special finish pricing and see page #A for its special order form. Group 4 products are non-cancelable and non-returnable. Please allow 4-6 weeks for all special order finishes.



**A8320-12-BRZ**  
12" TOWEL BAR

**A8320-18** 18" TOWEL BAR | **A8320-24** 24" TOWEL BAR | **A8320-30** 30" TOWEL BAR

**A8326-24-SB**  
24" TOWEL RACK



**A8324-SN**  
GRAB BAR BRACKETS ONLY



**A0012-SN**  
12" GRAB BAR ONLY

**A0018** 18" GRAB BAR | **A0024** 24" GRAB BAR | **A0030** 30" GRAB BAR



**A8325-24-PC** 24" DOUBLE TOWEL BAR | **A8325-30** 30" DOUBLE TOWEL BAR

**A8328-18-PN**  
18" HOSPITALITY  
TOWEL RACK



**AVAILABLE FINISHES**



**BRZ**  
Bronze



**MB**  
Matte Black



**PB/NL**  
Polished Brass/No Lacquer



**PC**  
Polished Chrome



**PN**  
Polished Nickel



**SB**  
Satin Brass



**SN**  
Satin Nickel

A8300 CONTEMPORARY I SERIES		Weight	Description	List Price Group 1 (PB/NL, PC)	List Price Group 2 (PN, SN)	List Price Group 3 (BRZ, MB, SB)	List Price Group 4 *SPECIAL FINISHES
A8320-12		1.6lb	12" Towel Bar	\$ 139.95	\$ 154.95	\$ 169.95	\$ 210.00
A8320-18		1.8lb	18" Towel Bar	\$ 149.95	\$ 164.95	\$ 179.95	\$ 225.00
A8320-24		2lb	24" Towel Bar	\$ 169.95	\$ 184.95	\$ 199.95	\$ 245.00
A8320-30		2.2lb	30" Towel Bar	\$ 184.95	\$ 199.95	\$ 219.95	\$ 270.00
A8324		1.4lb	Grab Bar Brackets Only. Sold in Pairs. (Bars Sold Separately) <b>Only Available in PB/NL, PC, PN, SN</b> <b>For all other finishes see Group 4</b>	\$ 169.95	\$ 184.95	N/A	\$ 250.00
A0012		1.6lb	12" Grab Bar Only	\$ 209.95	\$ 239.95	N/A	\$ 290.00
A0018		2lb	18" Grab Bar Only	\$ 264.95	\$ 304.95	N/A	\$ 360.00
A0024		2.6lb	24" Grab Bar Only	\$ 329.95	\$ 379.95	N/A	\$ 440.00
A0030		3lb	30" Grab Bar Only	\$ 384.95	\$ 439.95	N/A	\$ 510.00
A8325-24		2.6lb	24" Double Towel Bar	\$ 254.95	\$ 274.95	\$ 299.95	\$ 355.00
A8325-30		3lb	30" Double Towel Bar	\$ 279.95	\$ 299.95	\$ 329.95	\$ 390.00
A8326-24		4.4lb	24" Towel Rack	\$ 579.95	\$ 624.95	\$ 639.95	\$ 715.00
A8328-18		6lb	18" Hospitality Towel Rack	\$ 769.95	\$ 824.95	\$ 859.95	\$ 940.00

\* If your desired Alno, Inc. finish is not listed in Group 1, 2, or 3 please use Group 4 for Special finish pricing and see page #A for its special order form. Group 4 products are non-cancelable and non-returnable. Please allow 4-6 weeks for all special order finishes.



**A8330-SB**  
SOAP HOLDER WITH DISH



**A8360-MB**  
TISSUE HOLDER



**A8340-SN**  
6" TOWEL RING

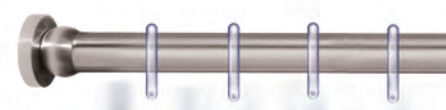


**A8350-18-PC**  
18" GLASS SHELF WITH BRACKETS

**A8350-24**  
24" GLASS SHELF WITH BRACKETS



**A8346-BRZ**  
SHOWER ROD BRACKETS



**A9045-SN**  
6' SHOWER ROD ONLY



**A8350-PB/NL**  
SHELF BRACKETS ONLY

**AVAILABLE FINISHES**

- BRZ**  
Bronze
- MB**  
Matte Black
- PB/NL**  
Polished Brass/No Lacquer
- PC**  
Polished Chrome
- PN**  
Polished Nickel
- SB**  
Satin Brass
- SN**  
Satin Nickel

A8300 CONTEMPORARY I SERIES		Weight	Description	List Price Group 1 (PB/NL, PC)	List Price Group 2 (PN, SN)	List Price Group 3 (BRZ, MB, SB)	List Price Group 4 *SPECIAL FINISHES
A8330		2lb	Soap Holder with Dish	\$ 109.95	\$ 119.95	\$ 124.95	\$ 170.00
A8340		1lb	6" Towel Ring	\$ 94.95	\$ 104.95	\$ 119.95	\$ 165.00
A9045		3.4lb	6' Shower Rod Only For all Series (1" Diameter)	\$ 319.95	\$ 369.95	\$ 419.95	\$ 495.00
A8346		1.6lb	Shower Rod Brackets (priced per pair)	\$ 119.95	\$ 129.95	\$ 139.95	\$ 185.00
A8350		1lb	Shelf Brackets Only	\$ 114.95	\$ 124.95	\$ 134.95	\$ 180.00
A8350-18 A8350-24		3.4lb 4.4lb	18" Glass Shelf with Brackets 24" Glass Shelf with Brackets	\$ 174.95 \$ 189.95	\$ 184.95 \$ 199.95	\$ 194.95 \$ 209.95	\$ 240.00 \$ 255.00
A8360		1.5lb	Tissue Holder	\$ 144.95	\$ 159.95	\$ 169.95	\$ 220.00

\* If your desired AIno, Inc. finish is not listed in Group 1, 2, or 3 please use Group 4 for Special finish pricing and see page #A for its special order form. Group 4 products are non-cancelable and non-returnable. Please allow 4-6 weeks for all special order finishes.



**A8361-PN**  
SINGLE POST TISSUE HOLDER



**A8366-PB/NL**  
SINGLE POST TISSUE HOLDER



**A8380-SN**  
ROBE HOOK



**A8370-BRZ**  
TUMBLER HOLDER  
WITH TUMBLER

**A8384-BRZ**  
DOUBLE ROBE HOOK



**A8385-SN**  
SWIVEL ROBE HOOK



**A8399-PN**  
ROBE HOOK

**AVAILABLE FINISHES**



**BRZ**  
Bronze



**MB**  
Matte Black



**PB/NL**  
Polished Brass/No Lacquer



**PC**  
Polished Chrome



**PN**  
Polished Nickel



**SB**  
Satin Brass



**SN**  
Satin Nickel

A8300 CONTEMPORARY I SERIES				List Price Group 1	List Price Group 2	List Price Group 3	List Price Group 4
Stock No.		Weight	Description	(PB/NL, PC)	(PN, SN)	(BRZ, MB, SB)	*SPECIAL FINISHES
A8361		12oz	Single Post Tissue Holder	\$ 104.95	\$ 114.95	\$ 129.95	\$ 165.00
A8366		1lb	Single Post Tissue Holder	\$ 104.95	\$ 114.95	\$ 129.95	\$ 165.00
A8370		2lb	Tumbler Holder with Tumbler	109.95	\$ 119.95	\$ 124.95	\$ 170.00
A8380		8oz	Robe Hook	\$ 59.95	\$ 64.95	\$ 69.95	\$ 100.00
A8384		9oz	Double Robe Hook	\$ 69.95	\$ 74.95	\$ 84.95	\$ 125.00
A8385		12oz	Swivel Robe Hook	\$ 164.95	\$ 174.95	\$ 189.95	\$ 240.00
A8399		12oz	Robe Hook	\$ 94.95	\$ 99.95	\$ 114.95	\$ 160.00

\* If your desired Alno, Inc. finish is not listed in Group 1, 2, or 3 please use Group 4 for Special finish pricing and see page #A for its special order form. Group 4 products are non-cancelable and non-returnable. Please allow 4-6 weeks for all special order finishes.

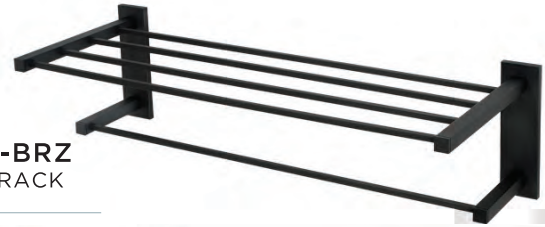


**A8420-12-PC**  
12" TOWEL BAR

**A8420-18**  
18" TOWEL BAR

**A8420-24**  
24" TOWEL BAR

**A8420-30**  
30" TOWEL BAR



**A8426-24-BRZ**  
24" TOWEL RACK

**A8424-PC**  
GRAB BAR BRACKETS ONLY



**A0012-PC**  
12" GRAB BAR ONLY

**A0018**  
18" GRAB BAR

**A0024**  
24" GRAB BAR

**A0030**  
30" GRAB BAR



**A8425-24-PC**  
24" DOUBLE TOWEL BAR

**A8425-30**  
30" DOUBLE TOWEL BAR

**A8428-18-PN**  
18" HOSPITALITY TOWEL RACK



**AVAILABLE FINISHES**



**BRZ**

Bronze



**MB**

Matte Black



**PB/NL**

Polished Brass/No Lacquer



**PC**

Polished Chrome



**PN**

Polished Nickel



**SB**

Satin Brass



**SN**

Satin Nickel

A8400 CONTEMPORARY II SERIES				List Price Group 1	List Price Group 2	List Price Group 3	List Price Group 4
Stock No.	Weight	Description	(PB/NL, PC)	(PN, SN)	(BRZ, MB, SB)	*SPECIAL FINISHES	
A8420-12 A8420-18 A8420-24 A8420-30	2.1lb 2.2lb 2.4lb 2.8lb	12" Towel Bar 18" Towel Bar 24" Towel Bar 30" Towel Bar	\$ 169.95 \$ 189.95 \$ 199.95 \$ 219.95	\$ 184.95 \$ 204.95 \$ 214.95 \$ 234.95	\$ 199.95 \$ 219.95 \$ 229.95 \$ 259.95	\$ 240.00 \$ 265.00 \$ 275.00 \$ 310.00	
A8424	1.6lb	Grab Bar Brackets Only. Sold in Pairs. (Bars Sold Separately) Only Available in PB/NL, PC, PN, SN For all other finishes see Group 4	\$ 174.95	\$ 189.95	N/A	\$ 255.00	
A0012 A0018 A0024 A0030	1.6lb 2.1lb 2.6lb 3lb	12" Grab Bar Only 18" Grab Bar Only 24" Grab Bar Only 30" Grab Bar Only Only Available in PB/NL, PC, PN, SN For all other finishes see Group 4	\$ 209.95 \$ 264.95 \$ 329.95 \$ 384.95	\$ 239.95 \$ 304.95 \$ 379.95 \$ 439.95	N/A N/A N/A N/A	\$ 290.00 \$ 360.00 \$ 440.00 \$ 510.00	
A8425-24 A8425-30	3lb 3.6lb	24" Double Towel Bar 30" Double Towel Bar	\$ 314.95 \$ 334.95	\$ 329.95 \$ 364.95	\$ 349.95 \$ 384.95	\$ 405.00 \$ 445.00	
A8426-24	4.6lb	24" Towel Rack	\$ 644.95	\$ 689.95	\$ 724.95	\$ 800.00	
A8428-18	6.4lb	18" Hospitality Towel Rack	\$ 889.95	\$ 944.95	\$ 974.95	\$ 1,055.00	

\* If your desired Aino, Inc. finish is not listed in Group 1, 2, or 3 please use Group 4 for Special finish pricing and see page #A for its special order form. Group 4 products are non-cancelable and non-returnable. Please allow 4-6 weeks for all special order finishes.



**A9045-SN**  
6' SHOWER ROD ONLY



**A8446-PN**  
SHOWER ROD  
BRACKETS



**A8430-PN**  
SOAP HOLDER WITH DISH



**A8440-PN**  
6" TOWEL RING



**A8450-18-PC**  
18" GLASS SHELF  
WITH BRACKETS

**A8450-24**  
24" GLASS SHELF  
WITH BRACKETS



**A8450-BRZ**  
SHELF BRACKETS ONLY



**A8455-18-PC**  
18" GLASS SHELF  
WITH BRACKETS

**A8455-24**  
24" GLASS SHELF  
WITH BRACKETS



**A8455-PC**  
SHELF BRACKETS ONLY

**AVAILABLE FINISHES**



**BRZ**  
Bronze



**MB**  
Matte Black



**PB/NL**  
Polished Brass/No Lacquer



**PC**  
Polished Chrome



**PN**  
Polished Nickel



**SB**  
Satin Brass



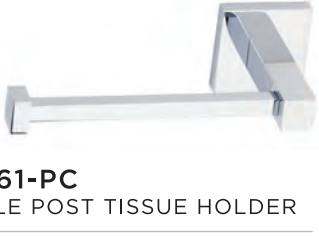
**SN**  
Satin Nickel

A8400 CONTEMPORARY II SERIES		Weight	Description	List Price Group 1 (PB/NL, PC)	List Price Group 2 (PN, SN)	List Price Group 3 (BRZ, MB, SB)	List Price Group 4 *SPECIAL FINISHES
A8430		2lb	Soap Holder with Dish	\$ 109.95	\$ 119.95	\$ 124.95	\$ 170.00
A8440		1lb	6" Towel Ring	\$ 119.95	\$ 129.95	\$ 139.95	\$ 185.00
A8446		2 lb	Shower Rod Brackets (priced per pair)	\$ 139.95	\$ 149.95	\$ 159.95	\$ 205.00
A9045		3.4lb	6' Shower Rod Only For all Series (1" Diameter)	\$ 319.95	\$ 369.95	\$ 419.95	\$ 495.00
A8450		1lb	Shelf Brackets Only (priced per pair)	\$ 139.95	\$ 149.95	\$ 159.95	\$ 205.00
A8450-18 A8450-24		3.8lb 4.4lb	18" Glass Shelf with Brackets 24" Glass Shelf with Brackets	\$ 199.95 \$ 214.95	\$ 209.95 \$ 224.95	\$ 219.95 \$ 234.95	\$ 265.00 \$ 280.00
A8455		1lb	Shelf Brackets Only (priced per pair)	\$ 109.95	\$ 119.95	\$ 129.95	\$ 175.00
A8455-18 A8455-24		3.8lb 4.4lb	18" Glass Shelf with Brackets 24" Glass Shelf with Brackets	\$ 169.95 \$ 184.95	\$ 179.95 \$ 194.95	\$ 189.95 \$ 204.95	\$ 235.00 \$ 250.00

\* If your desired Alno, Inc. finish is not listed in Group 1, 2, or 3 please use Group 4 for Special finish pricing and see page #A for its special order form. Group 4 products are non-cancelable and non-returnable. Please allow 4-6 weeks for all special order finishes.



**A8460-BRZ**  
TISSUE HOLDER



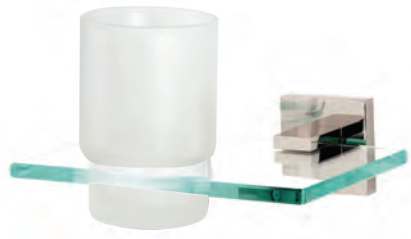
**A8461-PC**  
SINGLE POST TISSUE HOLDER



**A8466-PB/NL**  
SINGLE POST TISSUE HOLDER



**A8480-BRZ**  
ROBE HOOK



**A8470-PN**  
TUMBLER HOLDER WITH TUMBLER



**A8484-MB**  
DOUBLE ROBE HOOK



**A8485-SB**  
SWIVEL ROBE HOOK



**A8499-SN**  
ROBE HOOK

**AVAILABLE FINISHES**



**BRZ**  
Bronze

**MB**  
Matte Black

**PB/NL**  
Polished Brass/No Lacquer

**PC**  
Polished Chrome

**PN**  
Polished Nickel

**SB**  
Satin Brass

**SN**  
Satin Nickel

A8400 CONTEMPORARY II SERIES				List Price Group 1	List Price Group 2	List Price Group 3	List Price Group 4
Stock No.	Weight	Description	(PB/NL, PC)	(PN, SN)	(BRZ, MB, SB)	*SPECIAL FINISHES	
A8460	1.8lb	Tissue Holder 	\$ 169.95	\$ 184.95	\$ 194.95	\$ 245.00	
A8461	12oz	Single Post Tissue Holder 	\$ 114.95	\$ 124.95	\$ 134.95	\$ 180.00	
A8466	1lb	Single Post Tissue Holder 	\$ 114.95	\$ 124.95	\$ 134.95	\$ 180.00	
A8470	2lb	Tumbler Holder with Tumbler 	\$ 109.95	\$ 119.95	\$ 124.95	\$ 170.00	
A8480	12oz	Robe Hook 	\$ 74.95	\$ 79.95	\$ 84.95	\$ 125.00	
A8484	1lb	Double Robe Hook 	\$ 79.95	\$ 89.95	\$ 94.95	\$ 135.00	
A8485	1.2lb	Swivel Robe Hook 	\$ 174.95	\$ 184.95	\$ 194.95	\$ 245.00	
A8499	1lb	Robe Hook 	\$ 94.95	\$ 104.95	\$ 119.95	\$ 165.00	

\* If your desired AIno, Inc. finish is not listed in Group 1, 2, or 3 please use Group 4 for Special finish pricing and see page #A for its special order form. Group 4 products are non-cancelable and non-returnable. Please allow 4-6 weeks for all special order finishes.



**A8520-18-PB**  
18" TOWEL BAR

**A8520-24**  
24" TOWEL BAR

**A8520-30**  
30" TOWEL BAR



**A8530-SN**  
SOAP HOLDER WITH DISH



**A8540-PA**  
7" TOWEL RING



**A8550-18-SN**  
18" GLASS SHELF  
WITH BRACKETS

**A8550-24**  
24" GLASS SHELF  
WITH BRACKETS



**A8550-PA**  
SHELF BRACKETS ONLY



**A8560-PB**  
TISSUE HOLDER

**AVAILABLE FINISHES**



**PA**  
Polished Antique



**PB**  
Polished Brass



**PB/NL**  
Polished Brass/No Lacquer



**SN**  
Satin Nickel

A8500 RIBBON & REED SERIES		Weight	Description	List Price Group 1 (PB, PB/NL)	List Price Group 2 (SN)	List Price Group 3 (PA)	List Price Group 4 *SPECIAL FINISHES
A8520-18 A8520-24 A8520-30		2.2lb 2.6lb 2.9lb	18" Towel Bar 24" Towel Bar 30" Towel Bar	\$ 224.95 \$ 234.95 \$ 254.95	\$ 249.95 \$ 259.95 \$ 279.95	\$ 264.95 \$ 284.95 \$ 304.95	\$ 310.00 \$ 330.00 \$ 350.00
A8530		2lb	Soap Holder with Dish	\$ 134.95	\$ 144.95	\$ 154.95	\$ 200.00
A8540		1.8lb	7" Towel Ring	\$ 144.95	\$ 154.95	\$ 169.95	\$ 215.00
A8550		1.4lb	Shelf Brackets Only (priced per pair)	\$ 159.95	\$ 174.95	\$ 189.95	\$ 235.00
A8550-18 A8550-24		4.8lb 5.9lb	18" Glass Shelf with Brackets 24" Glass Shelf with Brackets	\$ 219.95 \$ 234.95	\$ 234.95 \$ 249.95	\$ 249.95 \$ 264.95	\$ 295.00 \$ 310.00
A8560		2lb	Tissue Holder	\$ 199.95	\$ 224.95	\$ 244.95	\$ 295.00

\* If your desired Alno, Inc. finish is not listed in Group 1, 2, or 3 please use Group 4 for Special finish pricing and see page #A for its special order form. Group 4 products are non-cancelable and non-returnable. Please allow 4-6 weeks for all special order finishes.



**A8566R-PA**  
SINGLE POST TISSUE  
HOLDER - RIGHT HAND

**A8570-SN**  
TUMBLER HOLDER  
WITH TUMBLER



**A8566L-PA**  
SINGLE POST TISSUE  
HOLDER - LEFT  
HAND



**A8599-PA**  
ROBE HOOK

**AVAILABLE FINISHES**



**PA**  
Polished Antique



**PB**  
Polished Brass



**PB/NL**  
Polished Brass/No Lacquer



**SN**  
Satin Nickel

A8500 RIBBON & REED SERIES				List Price Group 1	List Price Group 2	List Price Group 3	List Price Group 4
Stock No.		Weight	Description	(PB, PB/NL)	(SN)	(PA)	*SPECIAL FINISHES
A8566L		1.6lb	Single Post Tissue Holder Left Hand	\$ 139.95	\$ 154.95	\$ 169.95	\$ 215.00
A8566R		1.6lb	Single Post Tissue Holder Right Hand	\$ 139.95	\$ 154.95	\$ 169.95	\$ 215.00
A8570		2lb	Tumbler Holder with Tumbler	\$ 134.95	\$ 144.95	\$ 154.95	\$ 200.00
A8599		1lb	Robe Hook	\$ 109.95	\$ 119.95	\$ 129.95	\$ 175.00

\* If your desired AIno, Inc. finish is not listed in Group 1, 2, or 3 please use Group 4 for Special finish pricing and see page #A for its special order form. Group 4 products are non-cancelable and non-returnable. Please allow 4-6 weeks for all special order finishes.



**A8720-12-PC**  
12" TOWEL BAR

**A8720-18**  
18" TOWEL BAR

**A8720-24**  
24" TOWEL BAR

**A8720-30**  
30" TOWEL BAR



**A8730-SN**  
SOAP HOLDER WITH DISH



**A8750-18-SN**  
18" GLASS SHELF  
WITH BRACKETS

**A8750-24**  
24" GLASS SHELF  
WITH BRACKETS



**A8740-PC**  
6" TOWEL RING



**A8760-PC**  
TISSUE HOLDER



**A8750-SN**  
SHELF BRACKETS ONLY

**AVAILABLE FINISHES**



**PB/NL**  
Polished Brass/No Lacquer



**PC**  
Polished Chrome



**PN**  
Polished Nickel



**SN**  
Satin Nickel

A8700 INFINITY SERIES		Weight	Description	List Price Group 1	List Price Group 2	List Price Group 4
Stock No.				(PB/NL, PC)	(PN, SN)	*SPECIAL FINISHES
A8720-12	<p>13 1/2" / 19 1/2" / 25 1/2" / 31 1/2" length 3/4" bar diameter 2 3/4" projection 1 1/2" height 1 1/2" width 12" / 18" / 24" / 30" center to center</p>	1.2lb	12" Towel Bar	\$ 134.95	\$ 154.95	\$ 205.00
A8720-18		1.4lb	18" Towel Bar	\$ 149.95	\$ 164.95	\$ 220.00
A8720-24		1.6lb	24" Towel Bar	\$ 164.95	\$ 184.95	\$ 240.00
A8720-30		1.8lb	30" Towel Bar	\$ 174.95	\$ 194.95	\$ 255.00
A8730	<p>4 1/4" dish diameter 6 11/16" x 4 5/16" glass holder 4 15/16" projection 5/16" glass thickness 1 1/2" height 1 1/2" width</p>	2lb	Soap Holder with Dish	\$ 99.95	\$ 109.95	\$ 165.00
A8740	<p>2 13/16" projection 6" ring 1 1/2" height 1 1/2" width</p>	1lb	6" Towel Ring	\$ 109.95	\$ 124.95	\$ 180.00
A8750	<p>1 5/8" projection 1 1/2" width 1 1/2" height</p>	1lb	Shelf Brackets Only (priced per pair)	\$ 109.95	\$ 124.95	\$ 180.00
A8750-18	<p>18" / 24" length 4 3/4" width 5/16" glass thickness 5 3/8" projection</p>	3.4lb	18" Glass Shelf with Brackets	\$ 169.95	\$ 184.95	\$ 240.00
A8750-24		4.3lb	24" Glass Shelf with Brackets	\$ 184.95	\$ 199.95	\$ 265.00
A8760	<p>6 1/4" to 8 3/4" length 2 13/16" projection 1 1/2" height 1 1/2" width</p>	1lb	Tissue Holder	\$ 129.95	\$ 144.95	\$ 205.00

\* If your desired Alno, Inc. finish is not listed in Group 1, 2, or 3 please use Group 4 for Special finish pricing and see page #A for its special order form. Group 4 products are non-cancelable and non-returnable. Please allow 4-6 weeks for all special order finishes.



**A8770-PC**  
TUMBLER HOLDER  
WITH TUMBLER



**A8766-PN**  
SINGLE POST  
TISSUE HOLDER



**A8775-PC**  
ROBE HOOK

**A8767-PB/NL**  
RESERVE TISSUE  
HOLDER



**A8799-PC**  
ROBE HOOK



**A8786-PN**  
DOUBLE ROBE HOOK

**AVAILABLE FINISHES**



**PB/NL**  
Polished Brass/No Lacquer



**PC**  
Polished Chrome



**PN**  
Polished Nickel



**SN**  
Satin Nickel

A8700 INFINITY SERIES				List Price Group 1	List Price Group 2	List Price Group 4
Stock No.		Weight	Description	(PB/NL, PC)	(PN, SN)	*SPECIAL FINISHES
A8766		1lb	Single Post Tissue Holder	\$ 114.95	\$ 129.95	\$ 185.00
A8767		1.4lb	Reserve Tissue Holder	\$ 139.95	\$ 154.95	\$ 210.00
A8770		2lb	Tumbler Holder with Tumbler	\$ 99.95	\$ 109.95	\$ 165.00
A8775		9.6oz	Robe Hook	\$ 74.95	\$ 84.95	\$ 125.00
A8786		1lb	Double Robe Hook	\$ 99.95	\$ 114.95	\$ 165.00
A8799		12oz	Robe Hook	\$ 94.95	\$ 104.95	\$ 155.00

\* If your desired AIno, Inc. finish is not listed in Group 1, 2, or 3 please use Group 4 for Special finish pricing and see page #A for its special order form. Group 4 products are non-cancelable and non-returnable. Please allow 4-6 weeks for all special order finishes.



**A8920-12-SN**  
12" TOWEL BAR

A8920-18 18" TOWEL BAR    A8920-24 24" TOWEL BAR    A8920-30 30" TOWEL BAR



**A8930-BRZ**  
SOAP HOLDER WITH DISH



**A8950-18-PB** 18" GLASS SHELF WITH BRACKETS    **A8950-24** 24" GLASS SHELF WITH BRACKETS



**A8950-PN**  
SHELF BRACKETS ONLY



**A8940-BRZ**  
6" TOWEL RING



**A8960-PC**  
TISSUE HOLDER

**AVAILABLE FINISHES**

- BRZ** Bronze
- PB** Polished Brass
- PB/NL** Polished Brass/No Lacquer
- PC** Polished Chrome
- PN** Polished Nickel
- SN** Satin Nickel

A8900 EURO SERIES		Weight	Description	List Price Group 1 (PB, PB/NL, PC)	List Price Group 2 (PN, SN)	List Price Group 3 (BRZ)	List Price Group 4 *SPECIAL FINISHES
A8920-12 A8920-18 A8920-24 A8920-30		1.6lb 1.9lb 2lb 2.4lb	12" Towel Bar 18" Towel Bar 24" Towel Bar 30" Towel Bar	\$ 159.95 \$ 174.95 \$ 199.95 \$ 219.95	\$ 174.95 \$ 194.95 \$ 214.95 \$ 249.95	\$ 194.95 \$ 214.95 \$ 234.95 \$ 269.95	\$ 235.00 \$ 260.00 \$ 280.00 \$ 320.00
A8930		2lb	Soap Holder with Dish	\$ 124.95	\$ 134.95	\$ 144.95	\$ 190.00
A8940		1.8lb	7" Towel Ring	\$ 119.95	\$ 129.95	\$ 144.95	\$ 190.00
A8950		1lb	Shelf Brackets Only (priced per pair)	\$ 119.95	\$ 129.95	\$ 139.95	\$ 185.00
A8950-18 A8950-24		4.7lb 5.4lb	18" Glass Shelf with Brackets 24" Glass Shelf with Brackets	\$ 179.95 \$ 194.95	\$ 189.95 \$ 204.95	\$ 199.95 \$ 214.95	\$ 240.00 \$ 265.00
A8960		1.4lb	Tissue Holder	\$ 154.95	\$ 169.95	\$ 189.95	\$ 240.00

\* If your desired Alno, Inc. finish is not listed in Group 1, 2, or 3 please use Group 4 for Special finish pricing and see page #A for its special order form. Group 4 products are non-cancelable and non-returnable. Please allow 4-6 weeks for all special order finishes.



**A8970-BRZ**  
TUMBLER HOLDER  
WITH TUMBLER



**A8966-SN**  
SINGLE POST  
TISSUE HOLDER



**A8981-SN**  
2 1/4" ROBE  
HOOK



**A8967-BRZ**  
RESERVE TISSUE  
HOLDER



**A8980-PC**  
1 1/4" ROBE HOOK



**A8982-SN**  
3" ROBE HOOK



**A8989-BRZ**  
OPTIONAL  
BASE PLATE

**A8990-BRZ**  
OPTIONAL  
BASE PLATE  
FOR A8950 ONLY

**AVAILABLE FINISHES**

- BRZ**  
Bronze
- PB**  
Polished Brass
- PB/NL**  
Polished Brass/No Lacquer
- PC**  
Polished Chrome
- PN**  
Polished Nickel
- SN**  
Satin Nickel

A8900 EURO SERIES		Weight	Description	List Price Group 1 (PB, PB/NL, PC)	List Price Group 2 (PN, SN)	List Price Group 3 (BRZ)	List Price Group 4 *SPECIAL FINISHES
Stock No.							
A8966		1lb	Single Post Tissue Holder	\$ 119.95	\$ 129.95	\$ 144.95	\$ 190.00
A8967		1.2lb	Reserve Tissue Holder	\$ 114.95	\$ 124.95	\$ 139.95	\$ 185.00
A8970		2lb	Tumbler Holder with Tumbler	\$ 124.95	\$ 134.95	\$ 144.95	\$ 190.00
A8989		3oz	Optional Base Plate (sold as each)	\$ 18.95	\$ 21.95	\$ 24.95	\$ 35.00
A8990		3oz	Optional Base Plate for A8950 Only (sold as each)	\$ 18.95	\$ 21.95	\$ 24.95	\$ 35.00
				(PB, PB/NL, PC)	(PN, SN)	(BRZ, MB, SB)	*SPECIAL FINISHES
A8980		3oz	1 1/4" Robe Hook	\$ 24.95	\$ 29.95	\$ 34.95	\$ 50.00
A8981		4oz	2 1/4" Robe Hook	\$ 29.95	\$ 34.95	\$ 39.95	\$ 55.00
A8982		5oz	3" Robe Hook	\$ 34.95	\$ 39.95	\$ 44.95	\$ 64.00

\* If your desired AIno, Inc. finish is not listed in Group 1, 2, or 3 please use Group 4 for Special finish pricing and see page #A for its special order form. Group 4 products are non-cancelable and non-returnable. Please allow 4-6 weeks for all special order finishes.



**A9026-24-PN**  
24" TOWEL RACK

**A9020-12-AE**  
12" TOWEL BAR

<b>A9020-18</b> 18" TOWEL BAR	<b>A9020-24</b> 24" TOWEL BAR	<b>A9020-30</b> 30" TOWEL BAR
----------------------------------	----------------------------------	----------------------------------



**A9022-18-SN**  
18" GRAB BAR

**A9022-24**  
24" GRAB BAR



**A9024-SN**  
GRAB BAR  
BRACKETS ONLY



**A9023-18-SN**  
18" GRAB BAR

**A9023-24**  
24" GRAB BAR



**A0012-SN**  
12" GRAB BAR

<b>A0018</b> 18" GRAB BAR	<b>A0024</b> 24" GRAB BAR	<b>A0030</b> 30" GRAB BAR
------------------------------	------------------------------	------------------------------



**A9025-24-BRZ**  
24" DOUBLE TOWEL BAR

**A9025-30**  
30" DOUBLE TOWEL BAR

**AVAILABLE FINISHES**



A9000 EMBASSY SERIES		Weight	Description	List Price Group 1 (PB, PB/NL, PC)	List Price Group 2 (PN, SN)	List Price Group 3 (AE, AEM, BARC, BRZ, CHBRZ)	List Price Group 4 *SPECIAL FINISHES
<b>A9020-12</b>		2lb	12" Towel Bar	\$ 219.95	\$ 229.95	\$ 249.95	\$ 290.00
<b>A9020-18</b>		2.2lb	18" Towel Bar	\$ 229.95	\$ 239.95	\$ 259.95	\$ 305.00
<b>A9020-24</b>		2.4lb	24" Towel Bar	\$ 244.95	\$ 259.95	\$ 279.95	\$ 330.00
<b>A9020-30</b>		2.6lb	30" Towel Bar	\$ 259.95	\$ 274.95	\$ 294.95	\$ 345.00
<b>A9022-18</b>		3lb	18" Grab Bar (1" Diameter)	\$ 294.95	\$ 314.95	\$ 329.95	\$ 375.00
<b>A9022-24</b>		3.2lb	24" Grab Bar (1" Diameter)	\$ 309.95	\$ 329.95	\$ 349.95	\$ 395.00
<b>A9023-18</b>		3.4lb	18" Grab Bar (1 1/4" Diameter)	\$ 319.95	\$ 339.95	\$ 359.95	\$ 405.00
<b>A9023-24</b>		3.9lb	24" Grab Bar (1 1/4" Diameter)	\$ 359.95	\$ 379.95	\$ 399.95	\$ 445.00
<b>A9024</b>		1.8lb	Grab Bar Brackets Only. Sold in Pairs. (Bars Sold Separately) <b>Only Available in PB, PB/NL, PC, PN, SN</b> For all other finishes see Group 4	\$ 169.95	\$ 184.95	N/A	\$ 250.00
<b>A0012</b>		1.6lb	12" Grab Bar Only	\$ 209.95	\$ 239.95	N/A	\$ 290.00
<b>A0018</b>		2lb	18" Grab Bar Only	\$ 264.95	\$ 304.95	N/A	\$ 360.00
<b>A0024</b>		2.6lb	24" Grab Bar Only	\$ 329.95	\$ 379.95	N/A	\$ 440.00
<b>A0030</b>		3lb	30" Grab Bar Only	\$ 384.95	\$ 439.95	N/A	\$ 510.00
<b>A9025-24</b>		3lb	24" Double Towel Bar	\$ 379.95	\$ 399.95	\$ 424.95	\$ 480.00
<b>A9025-30</b>		3.4lb	30" Double Towel Bar	\$ 399.95	\$ 424.95	\$ 444.95	\$ 505.00
<b>A9026-24</b>		6.5lb	24" Towel Rack	\$ 659.95	\$ 724.95	\$ 764.95	\$ 840.00

\* If your desired Alno, Inc. finish is not listed in Group 1, 2, or 3 please use Group 4 for Special finish pricing and see page #A for its special order form. Group 4 products are non-cancelable and non-returnable. Please allow 4-6 weeks for all special order finishes.



**A9030-PC**  
SOAP HOLDER  
WITH DISH



**A9046-PN**  
SHOWER ROD BRACKETS



**A9045-BRZ**  
6' SHOWER ROD ONLY



**A9050-AEM**  
SHELF BRACKETS ONLY

**A9066-SN**  
SINGLE POST  
TISSUE HOLDER



**A9040-PB**  
7" TOWEL RING



**A9050-18-PB**  
18" GLASS SHELF  
WITH BRACKETS

**A9050-24**  
24" GLASS SHELF  
WITH BRACKETS

**A9060-CHBRZ**  
TISSUE HOLDER



**AVAILABLE FINISHES**



A9000 EMBASSY SERIES		Weight	Description	List Price Group 1 (PB, PB/NL, PC)	List Price Group 2 (PN, SN)	List Price Group 3 (AE, AEM, BARC, BRZ, CHBRZ)	List Price Group 4 *SPECIAL FINISHES
Stock No.							
A9030		1.5lb	Soap Holder with Dish	\$ 119.95	\$ 129.95	\$ 139.95	\$ 185.00
A9040		1.5lb	7" Towel Ring	\$ 154.95	\$ 169.95	\$ 179.95	\$ 225.00
A9045		3.4lb	6' Shower Rod Only For all Series (1" Diameter)	\$ 319.95	\$ 369.95	\$ 419.95	\$ 495.00
A9046		1.4lb	Shower Rod Brackets (priced per pair)	\$ 144.95	\$ 154.95	\$ 164.95	\$ 210.00
A9050		1.5lb	Shelf Brackets Only (priced per pair)	\$ 164.95	\$ 174.95	\$ 189.95	\$ 235.00
A9050-18 A9050-24		4.5lb 5.7lb	18" Glass Shelf with Brackets 24" Glass Shelf with Brackets	\$ 224.95 \$ 239.95	\$ 234.95 \$ 249.95	\$ 249.95 \$ 264.95	\$ 295.00 \$ 310.00
A9060		2lb	Tissue Holder	\$ 209.95	\$ 224.95	\$ 239.95	\$ 290.00
A9066		1.6lb	Single Post Tissue Holder	\$ 149.95	\$ 164.95	\$ 179.95	\$ 225.00

\* If your desired AIno, Inc. finish is not listed in Group 1, 2, or 3 please use Group 4 for Special finish pricing and see page #A for its special order form. Group 4 products are non-cancelable and non-returnable. Please allow 4-6 weeks for all special order finishes.



**A9067-CHBRZ**  
RESERVE TISSUE  
HOLDER

**A9070-BRZ**  
TUMBLER HOLDER  
WITH TUMBLER



**A9075-SN**  
ROBE HOOK



**A9099-PC**  
ROBE HOOK



**A9086-SN**  
DOUBLE ROBE HOOK



**A9081-AEM**  
ROBE HOOK



**A9080-CHBRZ**  
ROBE HOOK

**AVAILABLE FINISHES**



A9000 EMBASSY SERIES		Weight	Description	List Price Group 1 (PB, PB/NL, PC)	List Price Group 2 (PN, SN)	List Price Group 3 (AE, AEM, BARC, BRZ, CHBRZ)	List Price Group 4 *SPECIAL FINISHES
Stock No.							
A9067		1.2lb	Reserve Tissue Holder	\$ 164.95	\$ 179.95	\$ 199.95	\$ 245.00
A9070		1.2lb	Tumbler Holder with Tumbler	\$ 119.95	\$ 129.95	\$ 139.95	\$ 185.00
A9075		1lb	Robe Hook	\$ 99.95	\$ 109.95	\$ 119.95	\$ 150.00
A9080		6oz	Robe Hook	\$ 42.95	\$ 48.95	\$ 52.95	\$ 77.00
A9081		4oz	Robe Hook	\$ 29.95	\$ 34.95	\$ 39.95	\$ 62.00
A9086		1lb	Double Robe Hook	\$ 94.95	\$ 109.95	\$ 119.95	\$ 160.00
A9099		1lb	Robe Hook	\$ 109.95	\$ 119.95	\$ 129.95	\$ 170.00

\* If your desired Alno, Inc. finish is not listed in Group 1, 2, or 3 please use Group 4 for Special finish pricing and see page #A for its special order form. Group 4 products are non-cancelable and non-returnable. Please allow 4-6 weeks for all special order finishes.



**A9220-12-SN**  
12" TOWEL BAR

**A9220-18**  
18" TOWEL BAR

**A9220-24**  
24" TOWEL BAR

**A9220-30**  
30" TOWEL BAR



**A9246-BARC**  
SHOWER ROD BRACKETS



**A9045-PC**  
6' SHOWER ROD ONLY



**A9250-18-PB**  
18" GLASS SHELF WITH BRACKETS

**A9250-24**  
24" GLASS SHELF WITH BRACKETS



**A9230-PC**  
SOAP HOLDER WITH DISH

**A9240-PB**  
6" TOWEL RING



**A9250-PC**  
SHELF BRACKETS ONLY

**AVAILABLE FINISHES**



**BARC**  
Barcelona



**BRZ**  
Bronze



**CHBRZ**  
Chocolate Bronze



**PB**  
Polished Brass



**PB/NL**  
Polished Brass/No Lacquer



**PC**  
Polished Chrome



**SN**  
Satin Nickel

A9200 YALE SERIES		Weight	Description	List Price Group 1 (PB, PB/NL, PC)	List Price Group 2 (SN)	List Price Group 3 (BARC, BRZ, CHBRZ)	List Price Group 4 *SPECIAL FINISHES
A9220-12 A9220-18 A9220-24 A9220-30		1.4lb 1.8lb 1.9lb 2lb	12" Towel Bar 18" Towel Bar 24" Towel Bar 30" Towel Bar	\$ 159.95 \$ 164.95 \$ 179.95 \$ 199.95	\$ 169.95 \$ 174.95 \$ 189.95 \$ 209.95	\$ 179.95 \$ 184.95 \$ 199.95 \$ 224.95	\$ 220.00 \$ 230.00 \$ 245.00 \$ 275.00
A9230		1.4lb	Soap Holder with Dish	\$ 109.95	\$ 114.95	\$ 119.95	\$ 165.00
A9240		1lb	6" Towel Ring	\$ 119.95	\$ 129.95	\$ 139.95	\$ 185.00
A9045		3.4lb	6' Shower Rod Only For all Series (1" Diameter)	\$ 319.95	\$ 369.95	\$ 419.95	\$ 495.00
A9246		1.2lb	Shower Rod Brackets (priced per pair)	\$ 134.95	\$ 149.95	\$ 159.95	\$ 205.00
A9250		1.2lb	Shelf Brackets Only (priced per pair)	\$ 164.95	\$ 174.95	\$ 184.95	\$ 230.00
A9250-18 A9250-24		4.8lb 6lb	18" Glass Shelf with Brackets 24" Glass Shelf with Brackets	\$ 224.95 \$ 239.95	\$ 234.95 \$ 249.95	\$ 244.95 \$ 259.95	\$ 290.00 \$ 305.00

\* If your desired AIno, Inc. finish is not listed in Group 1, 2, or 3 please use Group 4 for Special finish pricing and see page #A for its special order form. Group 4 products are non-cancelable and non-returnable. Please allow 4-6 weeks for all special order finishes.



**A9270-PC**  
TUMBLER HOLDER  
WITH TUMBLER

**A9266-BRZ**  
SINGLE POST  
TISSUE HOLDER



**A9280-PB**  
ROBE HOOK



**A9299-SN**  
ROBE HOOK



**A9260-PB**  
TISSUE HOLDER

**AVAILABLE FINISHES**



**BARC**  
Barcelona



**BRZ**  
Bronze



**CHBRZ**  
Chocolate Bronze



**PB**  
Polished Brass



**PB/NL**  
Polished Brass/No Lacquer



**PC**  
Polished Chrome



**SN**  
Satin Nickel

A9200 YALE SERIES		Weight	Description	List Price Group 1 (PB, PB/NL, PC)	List Price Group 2 (SN)	List Price Group 3 (BARC, BRZ, CHBRZ)	List Price Group 4 *SPECIAL FINISHES
Stock No.							
A9260		1.4lb	Tissue Holder	\$ 159.95	\$ 169.95	\$ 184.95	\$ 235.00
A9266		1.2lb	Single Post Tissue Holder	\$ 134.95	\$ 144.95	\$ 159.95	\$ 205.00
A9270		1.4lb	Tumbler Holder with Tumbler	\$ 109.95	\$ 114.95	\$ 119.95	\$ 165.00
A9280		4oz	Robe Hook	\$ 39.95	\$ 44.95	\$ 59.95	\$ 90.00
A9299		1lb	Robe Hook	\$ 104.95	\$ 114.95	\$ 129.95	\$ 170.00

\* If your desired Alno, Inc. finish is not listed in Group 1, 2, or 3 please use Group 4 for Special finish pricing and see page #A for its special order form. Group 4 products are non-cancelable and non-returnable. Please allow 4-6 weeks for all special order finishes.



**A9320-8-CHP/MB**  
8" SMOOTH TOWEL BAR



**A9320-12-CHP**  
12" SMOOTH TOWEL BAR



**A9320-18-MB**  
18" SMOOTH TOWEL BAR



**A9320-24-MN/MB**  
24" SMOOTH TOWEL BAR



**A9366L-MN**  
SINGLE POST TISSUE HOLDER  
OR TOWEL HOLDER  
LEFT HAND - SMOOTH



**A9366R-MN/MB**  
SINGLE POST TISSUE HOLDER  
OR TOWEL HOLDER  
RIGHT HAND - SMOOTH

**A9381-CHP/MB**  
SMOOTH HOOK



**AVAILABLE FINISHES**



**CHP**  
Champagne



**CHP/MB**  
Champagne/Matte Black



**MB**  
Matte Black



**MN**  
Matte Nickel



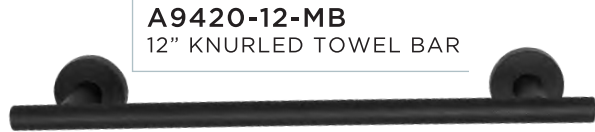
**MN/MB**  
Matte Nickel/Matte Black

A9300 VITA BELLA SMOOTH SERIES				List Price Group 1 (MB)	List Price Group 2 (CHP, MN, CHP/MB MN/MB)
Stock No.		Weight	Description		
A9320-8		1.4lbs	8" Smooth Towel Bar	\$ 119.95	\$ 129.95
A9320-12		1.6 lbs	12" Smooth Towel Bar	\$ 129.95	\$ 139.95
A9320-18		1.8 Lbs	18" Smooth Towel Bar	\$ 139.95	\$ 149.95
A9320-24		2 Lbs	24" Smooth Towel Bar	\$ 149.95	\$ 159.95
A9366L		8oz	Single Post Tissue Holder or Towel Holder Left Hand - Smooth	\$ 104.95	\$ 114.95
A9366R		8oz	Single Post Tissue Holder or Towel Holder Right Hand - Smooth	\$ 104.95	\$ 114.95
A9381		6oz	Smooth Hook	\$ 89.95	\$ 99.95

\* The Vita Bella bath collection is a versatile and contemporary line made in Italy. It offers both smooth and knurled designs transforming your space into a functional and aesthetically pleasing environment. This collection is available in five (5) finishes: Champagne (CHP), Matte Black (MB), Matte Nickel (MN), Champagne with a Matte Black bar (CHP/MB), and Matte Nickel with a Matte Black bar (MN/MB).



**A9420-8-CHP/MB**  
8" KNURLED TOWEL BAR



**A9420-12-MB**  
12" KNURLED TOWEL BAR



**A9420-18-MN/MB**  
18" KNURLED TOWEL BAR



**A9420-24-MN**  
24" KNURLED TOWEL BAR



**A9466L-CHP/MB**  
SINGLE POST TISSUE HOLDER  
OR TOWEL HOLDER  
LEFT HAND - KNURLED



**A9466R-CHP**  
SINGLE POST TISSUE HOLDER  
OR TOWEL HOLDER  
RIGHT HAND - KNURLED

**A9481-MB**  
KNURLED HOOK



**AVAILABLE FINISHES**



**CHP**  
Champagne



**CHP/MB**  
Champagne/Matte Black



**MB**  
Matte Black



**MN**  
Matte Nickel



**MN/MB**  
Matte Nickel/Matte Black

A9400 VITA BELLA KNURLED SERIES				List Price Group 1 (MB)	List Price Group 2 (CHP, MN, CHP/MB MN/MB)
Stock No.		Weight	Description		
A9420-8		1.4 Lbs	8" Knurled Towel Bar	\$129.95	\$139.95
A9420-12		1.6 Lbs	12" Knurled Towel Bar	\$139.95	\$149.95
A9420-18		1.8 Lbs	18" Knurled Towel Bar	\$154.95	\$164.95
A9420-24		2 Lbs	24" Knurled Towel Bar	\$164.95	\$174.95
A9466L		8oz	Single Post Tissue Holder or Towel Holder Left Hand - Knurled	\$109.95	\$119.95
A9466R		8oz	Single Post Tissue Holder or Towel Holder Right Hand - Knurled	\$109.95	\$119.95
A9481		6oz	Knurled Hook	\$94.95	\$99.95

\* The Vita Bella bath collection is a versatile and contemporary line made in Italy. It offers both smooth and knurled designs transforming your space into a functional and aesthetically pleasing environment. This collection is available in five (5) finishes: Champagne (CHP), Matte Black (MB), Matte Nickel (MN), Champagne with a Matte Black bar (CHP/MB), and Matte Nickel with a Matte Black bar (MN/MB).



**C8320-12-PC**  
12" TOWEL BAR

**C8320-18**  
18" TOWEL BAR

**C8320-24**  
24" TOWEL BAR

**C8320-30**  
30" TOWEL BAR

**C8340-SN**  
6" TOWEL RING



**C8380-SN**  
ROBE HOOK



**C8360-PC**  
TISSUE HOLDER



**C8366-PC**  
SINGLE POST  
TISSUE HOLDER

**AVAILABLE FINISHES**



**PC**  
Polished Chrome



**PN**  
Polished Nickel



**SB**  
Satin Brass



**SN**  
Satin Nickel

C8300 CRYSTAL CONTEMPORARY I SERIES				List Price Group 1	List Price Group 2	List Price Group 3	List Price Group 4
Stock No.		Weight	Description	(PC)	(PN, SN)	(SB)	*SPECIAL FINISHES
C8320-12 C8320-18 C8320-24 C8320-30		1.6lb 1.8lb 2lb 2.2lb	12" Towel Bar 18" Towel Bar 24" Towel Bar 30" Towel Bar	\$ 159.95 \$ 174.95 \$ 184.95 \$ 199.95	\$ 174.95 \$ 189.95 \$ 199.95 \$ 214.95	\$ 189.95 \$ 204.95 \$ 214.95 \$ 229.95	\$ 230.00 \$ 250.00 \$ 260.00 \$ 280.00
C8340		1lb	6" Towel Ring	\$ 109.95	\$ 119.95	\$ 134.95	\$ 180.00
C8360		1.5lb	Tissue Holder	\$ 159.95	\$ 174.95	\$ 189.95	\$ 240.00
C8366		1lb	Single Post Tissue Holder	\$ 114.95	\$ 129.95	\$ 144.95	\$ 190.00
C8380		8oz	Robe Hook	\$ 69.95	\$ 79.95	\$ 89.95	\$ 125.00

\* If your desired AIno, Inc. finish is not listed in Group 1, 2, or 3 please use Group 4 for Special finish pricing and see page #A for its special order form. Group 4 products are non-cancelable and non-returnable. Please allow 4-6 weeks for all special order finishes.



**C8420-12-PC**  
12" TOWEL BAR

**C8420-18**  
18" TOWEL BAR

**C8420-24**  
24" TOWEL BAR

**C8420-30**  
30" TOWEL BAR

**C8440-PC**  
6" TOWEL RING



**C8460-SN**  
TISSUE HOLDER



**C8466-PC**  
SINGLE POST  
TISSUE HOLDER

**C8480-SN**  
ROBE HOOK



**AVAILABLE FINISHES**

- PC**  
Polished Chrome
- PN**  
Polished Nickel
- SB**  
Satin Brass
- SN**  
Satin Nickel

C8400 CRYSTAL CONTEMPORARY II SERIES				List Price Group 1	List Price Group 2	List Price Group 3	List Price Group 4
Stock No.	Weight	Description	(PC)	(PN, SN)	(SB)	*SPECIAL FINISHES	
C8420-12	2lb	12" Towel Bar	\$ 184.95	\$ 194.95	\$ 209.95	\$ 250.00	
C8420-18	2.2lb	18" Towel Bar	\$ 194.95	\$ 204.95	\$ 219.95	\$ 265.00	
C8420-24	2.4lb	24" Towel Bar	\$ 214.95	\$ 224.95	\$ 239.95	\$ 285.00	
C8420-30	2.8lb	30" Towel Bar	\$ 224.95	\$ 234.95	\$ 249.95	\$ 300.00	
C8440	1lb	6" Towel Ring	\$ 129.95	\$ 139.95	\$ 154.95	\$ 200.00	
C8460	1.8lb	Tissue Holder	\$ 184.95	\$ 199.95	\$ 214.95	\$ 265.00	
C8466	1lb	Single Post Tissue Holder	\$ 129.95	\$ 139.95	\$ 154.95	\$ 200.00	
C8480	8oz	Robe Hook	\$ 84.95	\$ 89.95	\$ 99.95	\$ 130.00	

\* If your desired Alno, Inc. finish is not listed in Group 1, 2, or 3 please use Group 4 for Special finish pricing and see page #A for its special order form. Group 4 products are non-cancelable and non-returnable. Please allow 4-6 weeks for all special order finishes.



**A6524-PC**  
GRAB BAR BRACKETS ONLY

**A0012-PC**  
12" GRAB BAR ONLY



**A6624-SN**  
GRAB BAR BRACKETS ONLY

**A0018-SN**  
18" GRAB BAR ONLY



**A6724-PC**  
GRAB BAR BRACKETS ONLY

**A0024-PC**  
24" GRAB BAR ONLY



**A7724-SN**  
GRAB BAR BRACKETS ONLY

**A0030-SN**  
30" GRAB BAR ONLY

**A8424-PC**  
GRAB BAR BRACKETS ONLY

**A0012-PC**  
12" GRAB BAR ONLY



**A9024-SN**  
GRAB BAR BRACKETS ONLY

**A0018-SN**  
18" GRAB BAR ONLY



**A8324-PN**  
GRAB BAR BRACKETS ONLY

**A0012-PN**  
12" GRAB BAR ONLY

**AVAILABLE FINISHES**



**PB**  
Polished Brass



**PB/NL**  
Polished Brass/No Lacquer



**PC**  
Polished Chrome



**PN**  
Polished Nickel



**SN**  
Satin Nickel

ADA COMPLIANT GRAB BARS		Weight	Description	List Price Group 1 (PB, PB/NL, PC)	List Price Group 2 (PN, SN)	List Price Group 4 *SPECIAL FINISHES
A6524		1.8lbs	Grab Bar Brackets Only (Sold in Pairs)	\$ 179.95	\$ 199.95	N/A \$ 265.00
A6624		1.6lbs	Grab Bar Brackets Only (Sold in Pairs)	\$ 174.95	\$ 194.95	N/A \$ 260.00
A6724		1.6lbs	Grab Bar Brackets Only (Sold in Pairs)	\$ 169.95	\$ 184.95	N/A \$ 250.00
A7724		2lb	Grab Bar Brackets Only (Sold in Pairs)	\$ 169.95	\$ 184.95	N/A \$ 250.00
A8324		1.4lbs	Grab Bar Brackets Only. Sold in Pairs. <b>Not available in PB</b> <b>For all other finishes see Group 4</b>	\$ 169.95	\$ 184.95	N/A \$ 250.00
A8424		1.6lbs	Grab Bar Brackets Only. Sold in Pairs. <b>Not available in PB</b> <b>For all other finishes see Group 4</b>	\$ 174.95	\$ 189.95	N/A \$ 255.00
A9024		1.8lbs	Grab Bar Brackets Only. Sold in Pairs.	\$ 169.95	\$ 184.95	N/A \$ 250.00
A0012		1.6lbs	12" Grab Bar Only <b>Decorative Brackets Sold Separately.</b>	\$ 209.95	\$ 239.95	N/A \$ 290.00
A0018		2lbs	18" Grab Bar Only <b>Decorative Brackets Sold Separately.</b>	\$ 264.95	\$ 304.95	N/A \$ 360.00
A0024		2.6lbs	24" Grab Bar Only <b>Decorative Brackets Sold Separately.</b>	\$ 329.95	\$ 379.95	N/A \$ 440.00
A0030		3lbs	30" Grab Bar Only <b>Decorative Brackets Sold Separately.</b>	\$ 384.95	\$ 439.95	N/A \$ 510.00

\* If your desired Alno, Inc. finish is not listed in Group 1, 2, or 3 please use Group 4 for Special finish pricing and see page #A for its special order form. Group 4 products are non-cancelable and non-returnable. Please allow 4-6 weeks for all special order finishes.

# SPECIAL FINISH FORM

Please note that product will not be ordered until this signed form is received by Alno, Inc.

Please fax 818-570-7757 or email orders@alnoinc.com

Date \_\_\_\_\_ Company Name \_\_\_\_\_

Ship to \_\_\_\_\_

Address \_\_\_\_\_

City, State, Zip \_\_\_\_\_

Contact \_\_\_\_\_

Phone \_\_\_\_\_ Fax \_\_\_\_\_

Changes or modification to this order cannot be accommodated. This order cannot be changed, modified, or canceled once submitted. This order is non-returnable and non-cancelable under any circumstances.

## PURCHASE ORDER

\_\_\_\_\_ Quantity \_\_\_\_\_ Part No. \_\_\_\_\_ Finish \_\_\_\_\_ Group 4 List Price

\_\_\_\_\_ Quantity \_\_\_\_\_ Part No. \_\_\_\_\_ Finish \_\_\_\_\_ Group 4 List Price

\_\_\_\_\_ Quantity \_\_\_\_\_ Part No. \_\_\_\_\_ Finish \_\_\_\_\_ Group 4 List Price

\_\_\_\_\_ Quantity \_\_\_\_\_ Part No. \_\_\_\_\_ Finish \_\_\_\_\_ Group 4 List Price

**Signature** \_\_\_\_\_

Please note that product will not be ordered until this signed form is received by Alno, Inc. Please fax 818-570-7757 or email orders@alnoinc.com

**By signing I confirm to have reviewed this document and agree to the terms and conditions within.**

Special Finishes consist of: AE, AEM, BARC, BRZ, CHBRZ, MB, PA, PB, PC, PN, SB, and SN. Special finish products are non-cancelable and non-returnable. Estimated time of deliver is approximately 4-6 weeks.

DISTRIBUTED BY:

## ALNO, INC.

FINE DECORATIVE HARDWARE, BATHROOM  
ACCESSORIES, MIRRORS, MIRROR CABINETS,  
AND HANDCRAFTED BASINS

13984 Balboa Blvd. Sylmar, CA 91342-1086  
Phone: (818) 882-6028 / Fax: (818) 570-7757  
www.alnoinc.com

© Copyright ALNO Incorporated, 2025 All Rights Reserved

06/30/25