

Product Reference Guide:

Miele

All Gas Ranges

30"



[HR 1124-3 G AG](#) - 11791360

[HR1124-3 LP AG](#) - 11791390

4 Burner

Direct Select Features

36"



[HR 1134-3 G AG](#) - 11791410

[HR 1134-3 LP AG](#) -

11791430

6 Burner

Direct Select Features

36"



[HR 1135-3 G AG GR](#) -

11791450

No LP Model Available

4 Burner w/ Grill

Direct Select Features

36"



[HR 1136-3 G AG GD](#) -

11791500

[HR 1136-3 LP AG GD](#) -

11791510

4 Burners w/ Griddle

Direct Select Features

M-Touch Features

Wi-Fi

12 Cooking modes

Self Clean

Twin Power Convection Fans

Special Modes & My Miele

100+ Automatic Programs

Moisture Plus & Motion React

AirClean Catalyzer

Comfort Swivel handle

BTU's Highest: 19,500 // Lowest: 695

Standard Accessories

3 Wire Oven Racks

2 Telescopic Racks

Wireless 4-point touch probe

1 PerfectClean Universal Tray

1 Grilling/Roasting Insert

1 Perforated Baking Tray

Sandwich Covers (for grill & griddle models)

All M-Touch Speed Oven accessories for 48" models

All racks and runners are self clean ready and do not need to be removed during Self cleaning mode

Direct Select Features

Knob Control with LCD Display

4 Cooking Modes

Self Clean

Twin Power Convection Fans

Comfort Handle (No Swivel)

BTU's Highest 19,500 // Lowest: 695

Standard Accessories

1 Wire Oven Racks

1 Telescopic Rack

1 PerfectClean Universal Tray

Sandwich Covers (for grill & griddle models)

All racks and runners are self clean ready and do not need to be removed during Self cleaning mode

Dual Fuel Ranges

30"



[HR 1724-3 G DF](#) - 11791530

[HR 1724-3 LP DF](#) - 11791540

4 Burner/Direct Select Features

30"



[HR 1924-3 G DF](#) - 11791550

[HR 1924-3 LP DF](#) - 11791550

4 Burner
M-Touch Features

36"



[HR 1934-3 G DF](#) - 11791570

[HR 1934-3 LP DF](#) - 11791590

6 Burner
M-Touch Features

36"



[HR 1935-3 G DF GR](#) -
11791600

No LP Model Available
4 Burner w/ Grill
M-Touch Features

36"



[HR 1936-3 G DF GD](#) - 11791610

[HR 1936-3 LP DF GD](#) - 11791630

4 Burner w/ Griddle
M-Touch Features

M-Touch Features

Wi-Fi
12 Cooking modes
Self Clean
Twin Power Convection Fans
Special Modes & My Miele
100+ Automatic Programs
Moisture Plus & Motion React
AirClean Catalyzer
Comfort Swivel handle
SuperVision
BTU's Highest: 19,500 // Lowest: 695

Standard Accessories

3 Wire Oven Racks
2 Telescopic Racks
Wireless 4-point touch probe
1 PerfectClean Universal Tray
1 Grilling/Roasting Insert
1 Perforated Baking Tray
Sandwich Covers (for grill & griddle models)
All M-Touch Speed Oven accessories for 48" models

All racks and runners are self clean ready and do not need to be removed during Self cleaning mode

Direct Select Features

Knob Control with LCD Display
4 Cooking Modes
Self Clean
Twin Power Convection Fans
Comfort Handle (No Swivel)
BTU's Highest 19,500 // Lowest: 695

Standard Accessories

1 Wire Oven Racks
1 Telescopic Rack
1 PerfectClean Universal Tray
Sandwich Covers (for grill & griddle models)
All racks and runners are self clean ready and do not need to be removed during Self cleaning mode

48"



[HR 1954-3 G DF](#) - 11791670

[HR 1954-3 LP DF](#) - 11791680

8 Burner
M-touch Features

48"



[HR 1955-3 G DF GR](#) -
11791690

No LP Available
6 Burner w/ Grill
M-touch Features

48"



[HR 1956-3 G DF GD](#) - 11791700

[HR 1956-3 LP DF GD](#) - 11791750

6 Burner w/ Griddle
M-touch Features

Induction Ranges – 30”

M-Touch Features

Wi-Fi
12 Cooking modes
Self Clean
Twin Power Convection Fans
Special Modes & My Miele
100+ Automatic Programs
Moisture Plus & Motion React
AirClean Catalyzer
Comfort Swivel handle
Supervision

Standard Accessories

3 Wire Oven Racks
2 Telescopic Racks
Wireless 4-point touch probe
1 PerfectClean Universal Tray
1 Grilling/Roasting Insert
1 Perforated Baking Tray

All racks and runners are self clean ready and do not need to be removed during Self cleaning mode



[HR 1622-3 I](#) - 11791520

4 Burner
M-Touch Features



[HR 1422-3 I](#) - 12298850

4 Burner
Direct Select Features

Direct Select Features

Knob Control with LCD Display
5 Cooking Modes
Self Clean
Twin Power Convection Fans
Comfort Handle (No Swivel)

Standard Accessories

1 Wire Oven Racks
1 Telescopic Rack
1 PerfectClean Universal Tray

All racks and runners are self clean ready and do not need to be removed during Self cleaning mode



Induction Ranges – 36”



[HR 1632-3 I](#) - 12535260

M-Touch Controls

[HR 1432-3 I](#) - 12535250

Direct Select Controls

M-Touch Features

- M-Touch display - intuitive touch interface
- 5-zone induction cooktop including two PowerFlex zones and 1 round zone
- Moisture Plus for perfect baking and roasting results
- Wireless Precision Probe - precisely monitor food temperature
- WifiConn@ct - monitor your appliances from your mobile device
- Motion React - appliance reacts to you when approached
- Automatic programs - master new recipes easily

Standard Accessories

- 2x Pyrofit (self clean ready) Wire Racks
- 1x Pyrofit (self clean ready) Telescopic Rack
- 1x PerfectClean Baking Tray
- 1x PerfectClean Perforated Baking Tray

Wireless 4-point touch probe

All racks and runners are self clean ready and do not need to be removed during Self cleaning mode

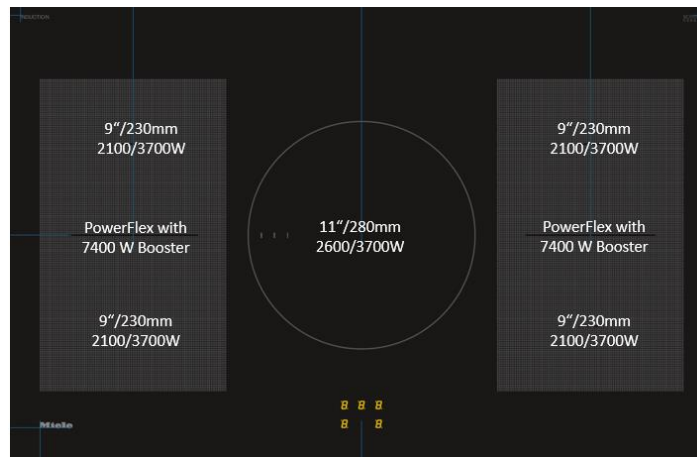
Direct Select Features

- DirectSelect – 7-segment display with rotary selector
- 5-zone induction cooktop including two PowerFlex zones and 1 round zone
- Rapid heating and even heat distribution – TwinPower
- Minimal cleaning effort – Pyrolytic cleaning
- Easy opening & closing, door with noise & vibration absorbers

Standard Accessories

- 1x Pyrofit (self clean ready) Wire Rack
- 1x Pyrofit (self clean ready) Telescopic Rack
- 1x PerfectClean Baking Tray

All racks and runners are self clean ready and do not need to be removed during Self cleaning mode



Range tops

30"



[KMR 1124-3 G](#) - 11852270

[KMR 1124-3 LP](#) - 11852330

4 Burner

36"



[KMR 1134-3 G](#) - 11852340

[KMR 1134-3 LP](#) - 11852370

6 Burner

36"



[KMR 1136-3 G GD](#) - 11852460

[KMR 1136-3 LP GD](#) - 11852550

4 Burner w/ Griddle

36"



[KMR 1135-3 G GR](#) - 11852600

No LP Available

4 Burner w/ Grill

Features

Dual Stacked TrueSimmer Burners

Stainless Steel Frame

Clean Touch Stainless in Knob

Location

Backlit Precision knobs

Dishwasher Safe Grates

Sandwich Covers (for Grill & Griddle models)

BTU's Highest: 19,500 // Lowest: 695

48"



[KMR 1354-3 G](#) - 11852560

[KMR 1354-3 LP](#) - 11852570

8 Burner

48"



[KMR 1356-3 G GD](#) - 11852640

[KMR 1356-3 LP GD](#) - 11852660

4 Burner w/ Griddle

48"



[KMR 1355-3 G GR](#) - 11852660

No LP Available

4 Burner w/ Grill

Range Hoods



DAR 1120 9753460
30" hood liner



DAR 1130 9753480
36" hood liner



DAR 1150 9753510
48" hood liner



DAR 1220-3 11898130
30" range hood



DAR 1230-3 11898170
36" range hood



DAR 1250-3 11898190
48" range hood

Range Hoods – blowers and chimney extensions



DRIB XL 12564020

Internal blower, 600 CFM
For 30" and 36"
hoods and liners



DRIB XXL 12564050

Internal blower, 1100 CFM
For 36" and 48"
hoods and liners



DREB XL 12563990

External blower, 600 CFM
For 30" and 36"
hoods and liners



DREB XXL 12564000

External blower, 1100 CFM
For 36" and 48"
hoods and liners



DRDC 3006 9764550 30"
DRDC 3606 12564780 36"
DRDC 4806 12565080 48"
6" chimney extension
for range hoods



DRDC 3012 9764560 30"
DRDC 3612 12564950 36"
DRDC 4812 9764670 48"
12" chimney extension
for range hoods

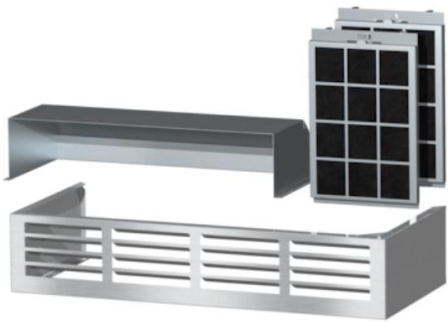


DRDC 3018 9764570 30"
DRDC 3618 12564980 36"
DRDC 4818 12565100 48"
18" chimney extension
for range hoods



DRDC 3024 9764590 30"
DRDC 3624 12564990 36"
DRDC 4824 12565130 48"
24" chimney extension
for range hoods

Range Hoods – other accessories

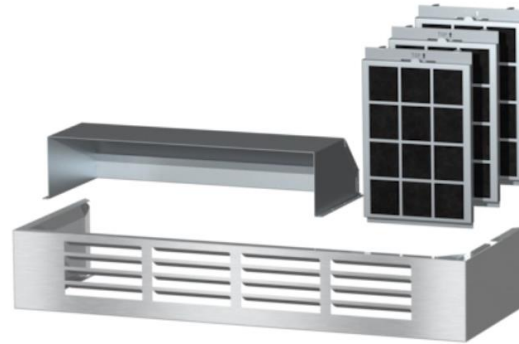


DRUU 30 – 12566690

Recirculation kit for
30" range hoods

Replacement filters:

DKF 23-21 - 9812040

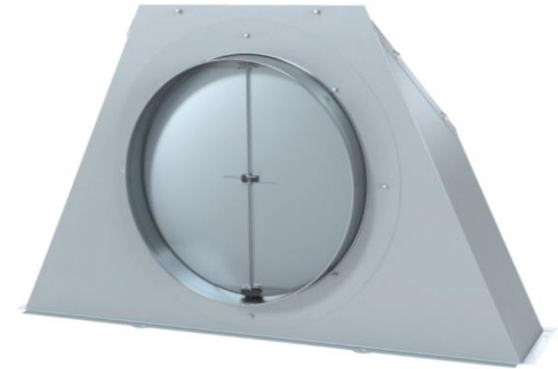


DRUU 36 – 9764750

Recirculation kit for
36" range hoods

Replacement filters:

DKF 24-1 - 9812050



DRRV 1200 – 12588480

Rear extraction conversion kit
For converting exhaust from

the top to the back

For DAR 11xx and DAR 12xx units

Gas Cooktops

24"



KM 3010 G - 4 Burner
9272050
NO LP AVAILABLE

24"



KM 2012 G - 4 Burner
11471350
NO LP AVAILABLE

30"



KM 3465 G - 4 Burner - 6792700
KM 3465 LP - 4 Burner - 6792730

30"



KM 2032 G - 5 Burner - 10735660
NO LP AVAILABLE

36"



KM 3054-1 G - 5 Burner 11766750
NO LP AVAILABLE

36"



KM 3475 G - 5 Burner - 6792770
KM 3475 LP - 5 Burner - 6792810

36"



KM 2355 G - 5 Burner, Flush Inset - 9450190
KM 2355 LP - 5 Burner, Flush Inset - 9456920

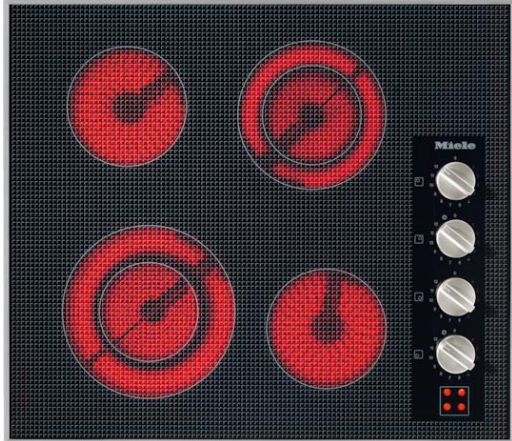
42"



KM 3485 G - 6 Burner - 6792850
KM 3485 LP - 6 Burner - 6792870

Electric Cooktops

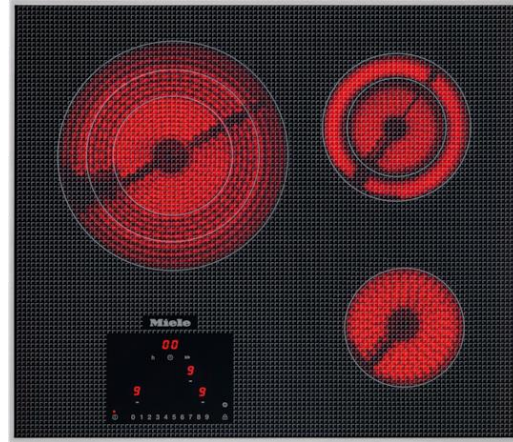
24"



[KM 5621 – 208v 4 Burner - 7821670](#)

[KM 5621 - 240v 4 Burner - 7821660](#)

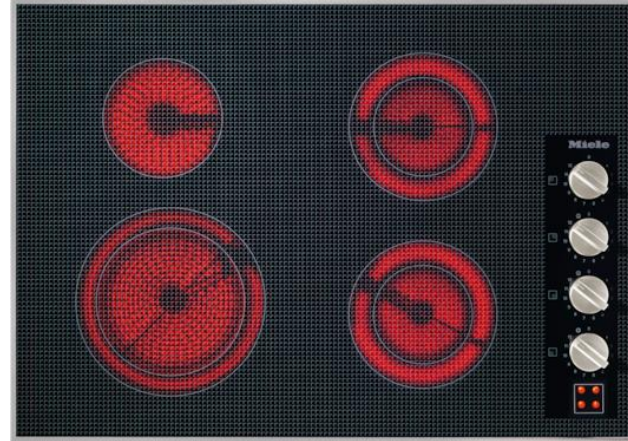
24"



[KM 5820 – 240v 3 Burner - 7821720](#)

No 208V Available

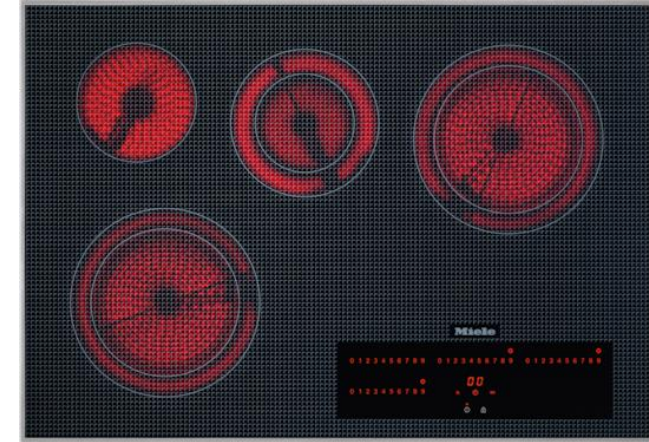
30"



[KM 5624 – 240v – 4 Burner - 7821680](#)

No 208V Available

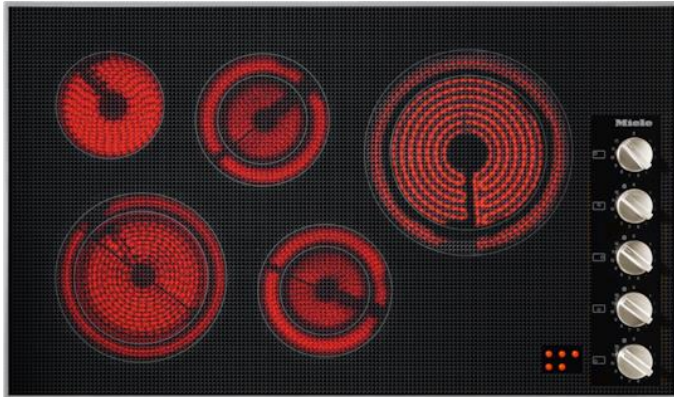
30"



[KM 5840 – 240v – 4 Burner - 7821740](#)

No 208v Available

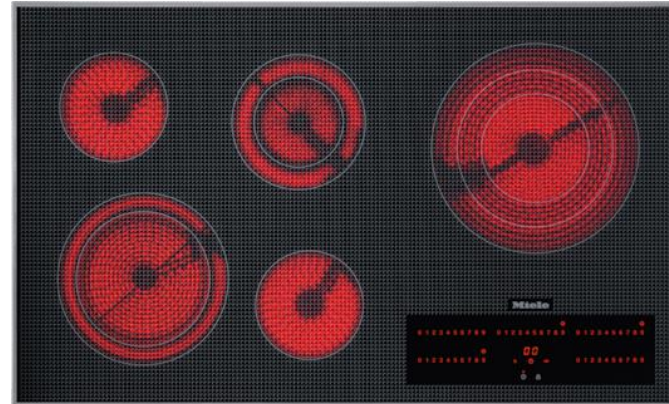
36"



[KM 5627 – 240v – 5 Burner - 7821700](#)

[KM 5627 – 208v - 5 Burner - 7821710](#)

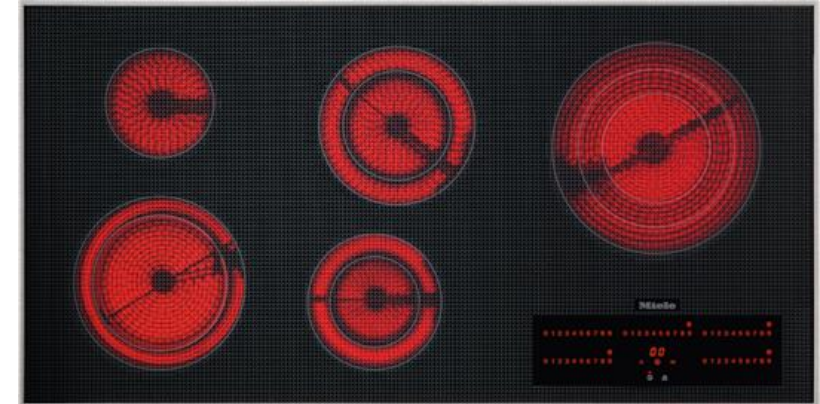
36"



[KM 5860 – 240v - 5 Burner - 7821760](#)

No 208v Available

42"



[KM 5880 – 240v – 5 Burner - 7821780](#)

No 208v Available

All Electric Cooktops are Stainless Steel Framed

Induction Cooktops

24"



[KM 7720 FR](#) – 3 Round Burners
Framed Unit
12074190

30"



[KM 7730 FR](#) – 4 Round Burners
Framed Unit
12074200

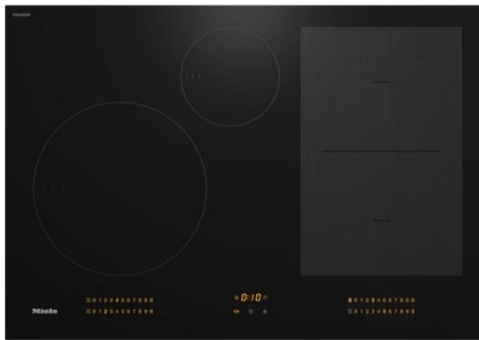
36"



[KM 7740 FR](#) - 5 Round Burners
Framed Unit
12074220

New frameless models below – can be mounted proud or flush

30"



[KM 7735 FL](#) – 2 Round Burners
w/ 1 PowerFlex cooking area
12074210

36"



[KM 7745 FL](#) – 3 PowerFlex cooking areas
12074230

42"



[KM 7755 FL](#) – 1 Round Burner
w/ 2 PowerFlex cooking areas
12074240

Wall and island hoods



PUR 88 W 10743170

30" wall hood

Vented or recirculated

Built in blower

DKF 12-900 – 10363780



PUR 98 W 10743150

36" wall hood

Vented or recirculated

Built in blower

DKF 12-900 – 10363780



PUR 98 D 10743130

36" island hood

Vented or recirculated

Built in blower

DKF 12-900 – 10363780



DA 399-7 10558800

36" wall hood

Vented or recirculated

Built in blower

DKF 12-900 – 10363780



DA 6596 W Puristic Canto

9762220

36" décor wall hood

DKF 12-900 – 10363780

Wall and island hoods



[DA 6596 D Puristic Canto](#) 9762240

36" island hood
Vented or recirculated
Built in blower

[DKF 12-900](#) – 10363780



[DA 4248 V D Puristic Varia](#) 10877250

48" island décor hood w/ motorized chimney
Vented or recirculated
Built in blower



[DA 5428 W Puristic Arca](#) 10934860

48" wall hood
Vented or recirculated
Built in blower



DA 6698 W Puristic Edition 6000 [Black](#) – 10877060

36" wall hood
Vented or recirculated
Built in blower

[Stainless](#) – 10877010

[DKF 12-900](#) – 10363780



DA 6698 D Puristic Edition 6000 [Black](#) – 10877240

36" island hood
Vented or recirculated
Built in blower

[Stainless](#) – 10877210

[DKF 12-900](#) – 10363780

Wall and island hoods



DAP 1727 12784040
30" wall mounted hood
Vented or recirculated
Built in blower



DAP 1927 12784050
36" wall mounted hood
Vented or recirculated
Built in blower

Built in hoods



[DA 1260](#) – 10662780
24" built-under hood
Vented or recirculated
Built in blower

[DKF 18-900](#) - 10363830



[DAS 2620](#) – 11878490
24" built-under hood
Vented or recirculated (with kit)
Built in blower

[DKFS 31-R](#) - 11793540



[DA 1280](#) – 10451490
30" built-under hood
Vented or recirculated
Built in blower

[DKF 18-900](#) - 10363830



[DAS 2920](#) - 11878500
30" built-under hood
Vented or recirculated (with kit)
Built in blower

[DKFS 31-R](#) - 11793540

Built in hoods



DA 2360 – 10765130

24" built-under insert

Vented or recirculated (with kit)

Built in blower

DKF 19-900 - 10794600



DA 2588 - 10876770

32" fully integrated built-under hood

Vented or recirculated (with kit)

Built in blower

DKF 15-900 – 10363800



DA 2390 – 10743660

36" integrated insert hood

Suitable for narrow units from 11.8" deep

Vented or recirculated (with kit)

Built in blower

DKF 19-900 - 10794600



DAS 4720 – 11878520

30" built in hood for narrow upper cabinets

Vented or recirculated (with kit)

Built in blower

DKFS 31-R - 11793540



DAS 4930 - 11878550

36" built in ventilation hood

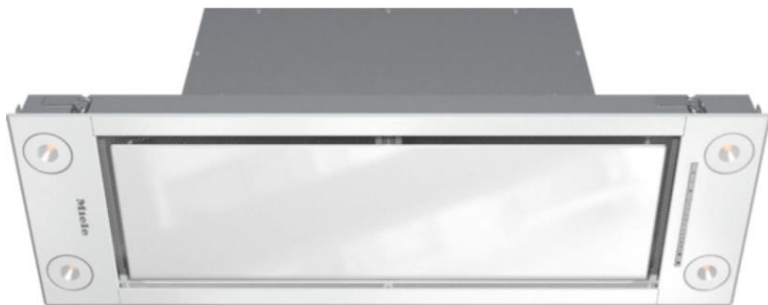
Vented or recirculated (with kit)

Built in blower

Obsidian Black front

DKFS 31-R - 11793540

Built in hoods



DA 2698

34 ¾" fully integrated hood
Vented or recirculated (with kit)

Built in blower

[White](#) – 10876830 [Stainless](#) – 10876810

[DKF 19-900](#) - 10794600



[DAS 8930](#) – 11878590

36" built in ventilation hood, intricate design
suitable for narrow cabinets

Vented or recirculated (with kit)

Built in blower

[DKFS 31-R](#) - 11793540



[DA 2518](#) – 10876740

43" integrated insert hood
Vented or recirculated (with kit)

Built in blower

[DKF 15-900](#) – 10363800



[DA 2628](#) – 10876800

46 ½" fully integrated insert hood
Vented or recirculated (with kit)

Built in blower

[DKF 19-900](#) - 10794600



[DAC 2247 Stella](#) – 12565890

45 7/8" integrated ceiling extractor
Vented or recirculated (with kit)

Built in blower

[DKF 12-900](#) - 10363780



Hood accessories



DUW 20 – 6264790
Recirc kit for wall hoods



DUU 150 – 5696270
Recirc kit for DA3xxx/2xxx,
DAS 2xxx, 4xxx, and 8xxx



DUU 151 – 7294230
Recirc kit for DA3xxx/2xxx,
DAS 2xxx, 4xxx, and 8xxx



DUU 2900-900 – 11131670
Recirc kit for ceiling extractor
and downdrafts



DATK 1-760 – 12566460
30" chimney extension for
DA 39x-7, DA 42xx W,
DA 5xxx W, DA 6698 W



DATK 2-1000 – 12566640
39.3" chimney extension for
DA 39x-7, DA 42xx W,
DA 5xxx W, DA 6698 W

Downdrafts



[DA 6881](#) – 10595900

30" downdraft, telescoping canopy
Vented or recirculated
Blower not included



[DA 6891](#) – 10595910

36" downdraft, telescoping canopy
Vented or recirculated
Blower not included



[DAG 600](#) – 12562610

Internal blower for both downdrafts
Vent connection - 6"
600 CFM



[DAG 1000](#) – 12562730

External blower for both downdrafts
Vent connection - 10"
1000 CFM

Wall Ovens

30" Easy Control



[H 2880 BP](#)
PureLine
11805330

30"



[H 2780 BP](#)
ContourLine
11805320

24" Direct Sensor "S"



[H 7263 BP](#) Grey – VitroLine - 11804780
[H 7263 BP](#) – PureLine - 11804760

30"



[H 7280 BP](#) Grey - VitroLine - 11805520
[H 7280 BP](#) - PureLine - 11805500
[H 7180 BP](#) - ContourLine - 11805340

Easy Control Features

- TwinPower Convection Fans
- 5 Cooking Modes
- Timers
- Rapid Preheat
- Self Clean
- Child Lock
- Delay Start
- Soft Open and Close Door
- Embossed Shelves

Standard Accessories

- 1 Wire Rack
- 1 Universal Tray

Racks and Rails must be removed for self cleaning on Easy Control Models only

Direct Sensor "S" Features

- ALL EASY CONTROL FEATURES
- + Wi-Fi
- + Over 100 Auto Programs
- + 6 Additional Cooking modes (11 total)
- + Favorites

Standard Accessories

- 1 Wire Rack
- 1 Universal Tray
- 1 Telescopic Rack
- 1 Grilling/Roasting Insert
- Racks and Rails

All racks and runners are self clean ready and do not need to be removed during Self cleaning mode

M-Touch "S"

24"



30"



Wall Ovens

30"



M-Touch

30"



[H 7660 BP](#) Grey – VitroLine - 11804840

[H 7660 BP](#) Black - VitroLine - 11804860

[H 7660 BP](#) - PureLine - 11804810

[H 7580 BP](#) - ContourLine - 11805540

[H 7680 BP](#) - PureLine - 11805550

[H 7880 BP](#) Grey- VitroLine - 11805600

[H 7880 BP](#) Black – VitroLine - 11805610

[H 7880 BPX](#) **Handless-Grey – ArtLine – 11805630**

[H 7880 BP](#) - PureLine - 11805590

[H 7780 BP](#) - ContourLine - 11805560

[H 7780 BP2](#) - ContourLine

DOUBLE WALL OVEN

*Miele only offers 1 double wall oven
11805570*

M-Touch "S" Features

ALL EASY CONTROL + DIRECT SENSOR S FEATURES

- + Taste Control
- + Motion React
- + Moisture Plus (Plumbed for 30" ovens, tank for 24" ovens)
- + 7 Additional Cooking Modes (18 total)
- + Special Modes (**including Sabbath mode**)
 - + My Miele
 - + Wired Probe

Standard Accessories

- 2 Wire Rack
- 1 Universal Tray
- 1 Telescopic Rack
- 1 Grilling/Roasting Insert
- 1 Wired Probe

All racks and runners are self clean ready and **do not need to be removed during Self cleaning mode**

M-Touch Features

ALL EASY CONTROL + DIRECT SENSOR + M-TOUCH S FEATURES

- + Food View (except DBL wall Oven)
- + Sensor Roast
- + 4-point Touch Wireless Probe
- +SuperVision

Standard Accessories

- 2 Wire Rack
- 1 Universal Tray
- 1 Telescopic Rack
- 1 Grilling/Roasting Insert
- 1 Wireless Precision Probe

All racks and runners are self clean ready and **do not need to be removed during Self cleaning mode**



Speed Ovens

Direct Sensor "S"

24"



[H 7240 BM Grey](#) – VitroLine - 11804520
[H 7240 BM](#) – PureLine - 11804510

30"



[H 7270 BM Grey](#) - VitroLine - 11804580
[H 7270 BM](#) - PureLine - 11804570
[H 7170 BM](#) - ContourLine - 11804470

M-Touch "S"

24"



[H 7640 BM](#) - PureLine 11804600

30"



[H 7670 BM](#) - PureLine - 11804610
[H 7570 BM](#) – ContourLine - 11804590

M-Touch 24"



[H 7840 BM Grey](#) - VitroLine - 11804650
[H 7840 BM Black](#) – VitroLine - 11804660
[H 7840 BM](#) – PureLine - 11804640

M-Touch 30"



[H 7870 BM Grey](#) - VitroLine - 11804690
[H 7870 BM Black](#) – VitroLine - 11804700
[H 7870 BM](#) – PureLine - 11804680
[H 7770 BM](#) - ContourLine - 11804620
[H 7870 BMX](#) - Graphite Grey – Artline - 11804710

Direct Sensor "S" Features

- Wi-Fi
- 14 Cooking Modes
- 7 Microwave Power Levels
- Quick & Gentle Inverter cooking
- Automatic Programs
- PerfectClean Interior
- Popcorn and Minute+ Button
- LED Lighting

Standard Accessories

- 1 Wire Rack
- 1 Glass Tray

M-Touch "S" Features

- ALL FEATURES OF THE DIRECT SENSOR S MODEL
+ 3 Additional cooking modes (17 total)
- + Motion React
 - + Special Modes
 - + Favorites
 - + Sabbath Mode

Standard Accessories

- 1 Wire Rack
- 1 Glass Tray
- 1 Wired Roast Probe

M-Touch Features

- ALL FEATURES OF THE M-TOUCH "S" MODEL
+ My Miele
+ SuperVision

Standard Accessories

- 1 Wire Rack
- 2 Glass Trays
- 1 Wired Roast Probe

****No Speed Ovens with Easy Control Or Direct Sensor Controls****

Combi-Steam Ovens

XL– Non-Plumbed (model numbers end in “0”)

24”

Direct Sensor



30”



24”

M-Touch “S”



30”



[DGC 7440 XL](#) Graphite Grey – VitroLine - 11876970
[DGC 7440 XL](#) – PureLine - 11876950

[DGC 7470](#) Graphite Grey XL - VitroLine - 11876960
[DGC 7470 XL](#) - PureLine - 11876230
[DGC 7370 XL](#) - ContourLine - 11875800

[DGC 7640 XL](#) – PureLine
 11876660

[DCG 7670 XL](#) – PureLine - 11876210
[DGC 7570 XL](#) – ContourLine - 11875790

24”

M-Touch



30”



[DGC 7840 XL](#) Graphite Grey
 VitroLine 11876600
[DGC 7840 XL](#) Obsidian Black
 VitroLine 11876610
[DGC 7840 XL](#) – PureLine
 11876590

[DGC 7870 XL](#) – PureLine 11876080
[DGC 7870 XL](#) - Graphite Grey 11876180
[DGC 7870 XL](#) - Obsidian Black 11876190
[DGC 7770 XL](#) – ContourLine 11875780
[DGC 7870X](#) – XL Graphite Grey ArtLine
 11877030

DirectSensor Features

- Wi-Fi
- Dual Steam Technology
- 3.3 kW External Steam Generator
- 3 in 1 Appliance
- Combi-Cooking
- Automatic Programs
- Menu Cooking
- Miele Mix and Match
- Stainless Steel Cavity
- Motorized Lift Up Fascia Panel
- Soft Close Door
- Hinged Broiling Element
- LED Lighting

Standard Accessories

- 1 Wire Rack
- 1 Universal Tray
- 1 Perforated Pan
- 1 Solid Pan

M-Touch “S” Features

- All Features Of Direct Sensor*
- + Motion React
- + Sabbath Mode

Standard Accessories

- 1 Wired Probe
- 1 Wire Rack
- 1 Telescopic Rack
- 1 Universal Tray
- 1 Perforated Pan
- 1 Solid Pan

M-Touch Features

- All Features of M-Touch S*
- + Larger Display Panel
- +Supervision

Standard Accessories

- 1 Wired Probe
- 1 Wire Oven Rack
- 1 Telescopic Rack
- 1 Universal Tray
- 2 Perforated Pans
- 1 Solid Pan

**No Combi-Steam ovens in
 Easy Control or Direct Sensor “S”
 Controls**

Combi-Steam Ovens

XL – Plumbed (model numbers end in “5”)

M-Touch

24”



[DGC 7845 XL](#) – PureLine
11876580

30”



[DGC 7875 XL](#) – PureLine
11876050
[DGC 7775 XL](#) – ContourLine
11875760

**XL Plumbed Units Only Available in
M-Touch**

M-Touch Features

- Dual Steam Technology
- 3.3 kW External Steam Generator
- 3 in 1 Appliance
- Combi-Cooking
- Automatic Programs
- Menu Cooking
- Miele Mix and Match
- Stainless Steel Cavity
- Motorized Lift Up Fascia Panel
- Soft Close Door
- Hinged Broiling Element
- LED Lighting
- Motion React
- Larger Display Screen
- SuperVision
- Sabbath Mode

Standard Accessories

- 1 Wired Probe
- 1 Wire Oven Rack
- 1 Telescopic Rack
- 1 Universal Tray
- 2 Perforated Pans
- 1 Solid Pan

Combi-Steam Ovens

XXL – Non-Plumbed (model numbers end in “0”)

M-Touch “S”

30”



[DGC 7680](#) – PureLine - 11876470

[DGC 7580](#) – Contour Line - 11876020

M-Touch “S” Features

Wi-Fi
Dual Steam Technology
3.3 kW External Steam Generator
3 in 1 Appliance
Combi-Cooking
Automatic Programs
Menu Cooking
Miele Mix and Match
Stainless Steel Cavity
Motorized Lift Up Fascia Panel
Soft Close Door
Hinged Broiling Element
LED Lighting
Motion React
Sabbath Mode

Standard Accessories

1 Wired Probe
1 Wire Rack
1 Telescopic Rack
1 Universal Tray
1 Perforated Pan
1 Solid Pan

24”



[DGC 7860](#) – Graphite Grey – VitroLine - 11876990

[DGC 7860](#) – Obsidian Black – VitroLine - 11877000

[DGC 7860](#) – PureLine - 11876980

M-Touch

30”



[DGC 7780](#) – Contour Line - 11875830

[DGC 7880](#) – PureLine - 11876350

[DGC 7880](#) - Graphite Grey – VitroLine - 11876370

[DGC 7880](#) – Obsidian Black – VitroLine - 11876420

[DGC 7880 X](#) – Graphite Grey – ArtLine - 11877040

M-Touch Features

All Features of M-Touch S
+ Larger Display Panel
+Supervision

Standard Accessories

1 Wired Probe
1 Wire Oven Rack
1 Telescopic Rack
1 Universal Tray
2 Perforated Pans
1 Solid Pan

Combi-Steam Ovens

XXL – Plumbed (*model numbers end in “5”*)

M-Touch “S” Features

- Wi-Fi
- Dual Steam Technology
- 3.3 kW External Steam Generator
- 3 in 1 Appliance
- Combi-Cooking
- Automatic Programs
- Menu Cooking
- Miele Mix and Match
- Stainless Steel Cavity
- Motorized Lift Up Fascia Panel
- Soft Close Door
- Hinged Broiling Element
- LED Lighting
- Motion React

Standard Accessories

- 1 Wired Probe
- 1 Wire Rack
- 1 Telescopic Rack
- 1 Universal Tray
- 1 Perforated Pan
- 1 Solid Pan

M-Touch “S”

30”



[DGC 7585 XXL](#) – Contour Line

11875850

[DGC 7685 XXL](#) – PureLine

11876450

M-Touch

24”



[DGC 7865 XXL CTS](#) – 24” PureLine

11877020

30”



[DGC 7785 XXL](#) – ContourLine - 11875810

[DGC 7885 XXL](#) – PureLine - 11876310

M-Touch Features

- All Features of M-Touch S
- + Larger Display Panel
- +Supervision

Standard Accessories

- 1 Wired Probe
- 1 Wire Oven Rack
- 1 Telescopic Rack
- 1 Universal Tray
- 2 Perforated Pans
- 1 Solid Pan

Standard Microwaves

24"



M 2241 SC – EasySensor, Side Swing Door
11845640

Features

900 Watts
Popcorn & Beverage Buttons
Automatic Cooking & Defrosting
LED Lighting
Turntable Size: M2241SC is 12.75"
Turntable Size: M7240TC is 16"

Standard Accessories

Plate Cover

24"



M 7240 TC – DirectSensor S,
Drop Down Door
11845600

Vacuum Seal Drawers

24"



EVS 7010 – Push 2 Open, VitroLine – Obsidian Black -
11845430
Above Model is 5-5/8 high

Features

3 Vacuum Levels
3 Sealing Levels and sealing external
containers
Prep for Sous Vide
Resealing
Marinating
Portioning
Storage
Freezing

30"



EVS 7670 – Push 2 Open, VitroLine – Obsidian Black –
11845480
Above model is 9- 3/16 High



Warming Drawers

24"



[ESW 7010](#) - Graphite Grey – VitroLine -11794740

[ESW 7010](#) – Obsidian Black – VitroLine - 11794720

All Above models are 5 5/8 High

30"



[ESW 7570](#) - Stainless Steel - ContourLine
11794790

Above Model is 9-13/16 High

30"



[ESW 7580](#) - Stainless Steel - ContourLine
11794800

Above Model is 10- 13/16 High

30"



[ESW 7670](#) – Graphite Grey – VitroLine - 11794810

[ESW 7670](#) – Obsidian Black – VitroLine - 11794840

[ESW 7670 CTS](#) – PureLine - 11794810

Above Models are 9-3/16 High

30"



[ESW 7680](#) - Graphite Grey – VitroLine -11794870

[ESW 7680](#) – Obsidian Black – VitroLine - 11794880

[ESW7680 CTS](#) – PureLine - 11794860

Above Models are 10-13/16 High

30"



[ESW 6380 FB](#) – Panel Ready
9685060

Above Model is 10-13/16 High

Features

No handles – Push 2 Open on all models + Wi-Fi

4 Modes w/ 4 Temperature Settings Each

Preheat cups, plates, and keep food warm

Slow Cook between 104-185 degrees

Automatic Shut Off and Programmable Timer

Convection Heating System

Unique Open Sided Design

Built In Coffee Makers

Direct Sensor

24"



- [CVA 7440](#) Graphite Grey – VitroLine
11754280
- [CVA 7440](#) PureLine
11733860
- [CVA 7445](#) – PureLine
11754300

30"



- [CVA 7370](#) – ContourLine
11733830

24"



- [CVA 7845](#) Graphite Grey – VitroLine
11733850
- [CVA 7845](#) Obsidian Black – VitroLine
11754250
- [CVA 7845](#) – PureLine - 11733840
- [CVA 7840](#) – PureLine - 11754270

M-Touch

30"



- [CVA 7775](#) – ContourLine – 11733820
- [CVA 7875](#) – PureLine - 12635830
- [CVA 7875](#) – Obsidian Black – 12635800
- [CVA 7875](#) – Graphite Grey - 12535820

DirectSensor Features

Wi-Fi

- 3 Separate Bean Containers for **single bean type** (*unit will pull beans of all 3 containers at once*)
- Automatic Cup Sensor
- Coffee & Tea Beverages
- Easy Click Milk Container
- One Touch for 2
- Aromatic System Fresh
- Performance Mode
- Expert Mode

Standard Accessories

Milk Container

Pro tips:

- Plumbed Miele coffee makers can be set to turn their main water supply off and function as non-plumbed units if desired
- **If the model number ends in a "5", it is a plumbed unit.**

M-Touch Features

ALL FEATURES OF DIRECT SENSOR MODEL

- + Coffee Select (3 bean containers, you can add 3 different bean types, and it will pull from designated container of choice)
- + Motion React
- +Auto Clean
- +Auto Descale
- +SuperVision

Standard Accessories

- Milk Container
- 1 Auto Descale Cartridge
- 1 Auto Clean Cartridge

G5 Dishwashers General Features

G 50XX



[G 5008 SCU](#) - 11966810
[G 5051 SCVi – ADA](#) - 11636710
[G 5056 SCVi](#) -11636720
[G 5056 SCVi SF](#) - 11695330
[G 5058 SCVi SFP](#) - 11966820
Above Models Are 24"

G 52XX



[G 5266 SCVi](#) - 11636740
[G 5266 SCVi SF](#) - 11636750
[G 5266 SCVi SFP](#) - 11695340
Above Models are 24"

G 54XX



[G 5482 SCVi SL](#) - 11636760
Above Model is 18"

G 58XX



[G 5892 SCVi SL](#) - 11636790
Above Model is 18"

5 Programs: Normal, Pots & Pans, QuickIntenseWash, SaniWash, Rinse & Hold
Program Options: Delay Start, Express
Settings Options: Extra Clean, Extended Dry

DirectSelect Controls
 Clean AirDrying
 Auto Sensor and Load Sensor
 Comfort Baskets
 Original Cutlery Tray
 Double Waterproof System
 Three Independent Spray Arms
 16 Place Settings

Same as G50s
 + Clean Air-Drying w/ Auto Open
 + Sensor Dry
 + 3D Multi Flex Tray
 + Water Softener

Abbreviation Key:
 SCU – Front control prefinished
 SCL – SlimLine
 SCVi – Panel ready
 SCVi SF – Stainless front with a handle
 SCVi SFP – Stainless front with a pocket handle

5 Programs: Normal, Pots & Pans, QuickIntenseWash, SaniWash, Rinse & Hold
Program Options: Delay Start, Express
Settings Options: Extra Clean, Extended Dry

DirectSelect Controls
 Clean Air Drying
 Auto Sensor and Load Sensor
 Comfort Baskets (18")
 Original Cutlery Tray (18")
 Water Softener
 Double WaterProof System
 Three Independent Spray Arms
 10 Place Settings

14 Programs: Normal, Pots & Pans, QuickIntenseWash, SaniWash, Rinse & Hold, **China & Crystal, Extra Quiet, Economy, Filters, Clean Machine, Sensor Wash, Tall Items, Glasses – No Rinse Aid**
Settings Options: Extra Clean, Extended Dry, **IntenseZone**

DirectSelect Controls
CleanAirDrying w/ AutoOpen
SensorDry
 Auto Sensor and Load Sensor
MaxiComfortBaskets (18")
3D MultiFlex Tray (18")
Water Softener
 Double WaterProof
 Three Independent Spray Arms

G7 Dishwashers General Features

G 72XX



[G 7216 SCU](#) - 12497130
[G 7266 SCVi](#) - 12497140
[G 7266 SCVi SF](#) - 12497150
Above Models Are 24"

G 71XX



[G 7186 SCVi](#) - 12496990
[G 7186 SCVi SFP](#) - 12496690
[G 7196 SCVi SF](#) - 12496710
[G 7193 SCVi \(ADA\)](#) - 12496700
Above Models are 24"

Same as G72xx
 + **AutoDos**
 +1 Flexcare Cup Rack
 +EnergyStar Most Efficient

Abbreviation Key:
SCU – Front control finished
SCi – Front control panel ready
SCVi – Panel ready
SCVi SF – Stainless front with a handle
SCVi SFP – Stainless front with a pocket handle
K2O – Knock 2 Open; handle less option

G 77XX



[G 7766 SCVi](#) - 12496900
[G 7766 SCVi SF](#) - 12496910
[G 7791 SCVi K2O](#) – ADA - 12496920
Above Models are 24"

Same As G71xx
 +4 More programs –
 SensorWash
 Hood Filters
 Energy Saver
 Economy
 Obsidian Black Control Panel
 + DirectSensor Controls with
 Obsidian Black & Backlit Logo
 + Brilliant LED Light
 MaxiComfort Baskets
 + K2O on certain models
 39dB operating level

G 79XX



[G 7936 SCi \(front control\)](#) - 12496970
[G 7986 K2O SCVi](#) - 12496980
Above Models are 24"

Same As G77xx
 + M-touch Controls /
 Obsidian Black control panel
 +No rinse aid programs for glasses
 +2 Flexicare Glass Holders
 Panel ready only

9 Programs: Normal, Pots & Pans, China/Crystal, SaniWash, Quick Intense Wash, SaniWash, Rinse&Hold, Extra Quiet, Clean Machine, Rinse Salt
Program Options: Delay Start, Express
Settings Options: Extra Clean, Extended Dry, Bottle Clean, Intense Zone
 Auto Open after each cycle completes
 DirectSelect Controls
 CleanAirDrying w/ AutoOpen
 SensorDry
 Auto Sensor and Load Sensor
 ExtraComfort Baskets
 2x FlexCare Glass & Bottle
 2x MultiClip, 1X XL Assist
 3D MultiFlexTray
 Water Softener
 Double Waterproof System
 Three Independent Spray Arms
 16 Place Settings (full size)
 42dB operating level

Miele stainless dishwasher panel options

(all panels are Miele Clean Touch Steel)



24" stainless panel
with a pocket handle
and 4" toe kick only

[GFVi 709/77](#)
12672750



24" stainless panel with
ContourLine handle and
Miele range badge
4" toe kick only

[GFVi 712/77](#)
12074470



18" stainless panel
with no handle

[GFVi 453/77-7](#) 4" toe kick
12670480
[GFVi 453/72-7](#) 6" toe kick
12670470



24" stainless panel
With ContourLine handle
[GFVi 711/77](#) – 4" toe kick
12074450

[GFVi 711/72](#) – 6" toe kick
12074400



24" stainless panel
with no handle and no
bore holes; used with our
K2O dishwashers

[GFVi 701/77](#) 4" toe kick
12670600
[GFVi 701/72](#) 6" toe kick
12670590



24" stainless panel
with PureLine handle
And 4" toe kick only

[GFVi 710/77](#)
12074350



24" 3/4 height panel for
Miele front control panel
ready units

[GFVi 60/65-7](#) 4" toe kick
12670410
[GFVi 60/60-7](#) 6" toe kick
12670320

Handle Options

GEN 7	MODEL	MATERIAL	TRIM / COLOR	HANDLE WIDTH	COOKING	VI DISHWASHER	SF DISHWASHER	VI COOLING	SF MASTERCOOL
	DS 7000	11345890	PureLine Stainless steel ¹	15 ^{3/4} in	x	x		x	
	DS 7000	11345930	VitroLine Obsidian black ¹	15 ^{3/4} in	x	x		x	
	DS 7000	11345940	VitroLine Brilliant white ¹	15 ^{3/4} in	x	x		x	
	DS 7000	11345950	VitroLine Graphite grey ¹	15 ^{3/4} in	x	x		x	
	DS 7308	12047020	ContourLine Stainless steel standard handle	21 ^{1/8} in	x	x		x	x
	DS 7708	12047000	ContourLine Stainless steel swiveling handle	21 ^{1/8} in	x	x		x	x
	DS 7808	12047030	VitroLine Obsidian black	19 ^{11/16} in	x	x		x	
	DS 7808	12047050	VitroLine Graphite grey	19 ^{11/16} in	x	x		x	
	DS 7808	12047060	VitroLine Brilliant white	19 ^{11/16} in	x	x		x	
	DS 7808	12046910	PureLine Stainless steel	19 ^{11/16} in	x	x		x	

Interfaces – Front-facing

G72



G79



Miele

Interfaces – Top, hidden

G72

(G 71 is the same, but with AutoDos)

DirectSelect



G77

DirectSensor



G79

M Touch Vi



Baskets

	G 72 & G 71 ExtraComfort Baskets	G 77 & G 79 MaxiComfort Baskets
Baskets		
New Highlights	<ul style="list-style-type: none">2 x FlexCare Glass&Bottle2 x MultiClip1 x XL Assist	<ul style="list-style-type: none">2 x FlexCare Glass&Bottle2 x MultiClip1 x XL Assist1 x StrawClean1 x cuprack

Washers

WXD160

11614070



1600 RPMs
White Door
Direct Sensor White Display
Miele Care Wi-Fi
SoftSteam
Auto Load
Delay Start
Hot Water Connection
Delicates
Express
Outdoor
Proofing
Normal
Sanitize
Handwash
Dress Shirts
Extra White
Darks/Denims
Cap Dosing

WWD 160

11614040



1600 RPMs
White Door
Direct Sensor White Display
Miele Care Wi-Fi
SoftSteam
Auto Load
Delay Start
Hot Water Connection
Delicates
Express
Outdoor
Proofing
Normal
Sanitize
Handwash

Dress Shirts
Extra White
Darks/Denims
Cap Dosing
+Black Door
+Direct Sensor Yellow Display

WWD 660

11614100



Same Features and Cycles as *WWD 160*
+ TwinDos

WXF 660

11614130



Same Features As the *WXD160*
+ White Door w/ Chrome Ring
+TwinDos
+Drum Light
+Clean Machine
+Wrinkle Free
+Linens/Drapes/Bedsheets
+Sports Wear
+Woolens
+Silks Drain & Spin
+Quick Rinse
+Baby Clothes
+Towels
+Downs Pillows
+Soak
+Pre-Rinse

WXI 860

11614140



Same Features as the *WXF660*
+ Single Wash
+ Degree of Soiling option
+AllergoWash
+ LED Lighting

WXR 860

11613700



Same Features as the *WXI 860*
+ M-Touch Interface
+ Trainers (Sneakers)
+Starch
+Quick Intense Wash

Tumble Dryers

TXD 160 WP

11619650



Entry level unit

- Heat pump drying; not condensation - far more efficient and faster
- **10 drying programs standard**
- DirectSensor controls – 7 segment display
- Wi-Fi
- Perfect Dry moisture sensing technology
- Dual stage lint filtration system
- Miele exclusive Honeycomb drum for reduced wrinkling and better care of delicate fabrics
- Intelligent drum reversal
- Water reservoir for collecting water or the unit can be drained easily with no collection necessary
- 8kg load capacity
- Add laundry feature
- Delay start up to 24 hours
- Single fragrance slot
- Reversible door

TWD 360 WP

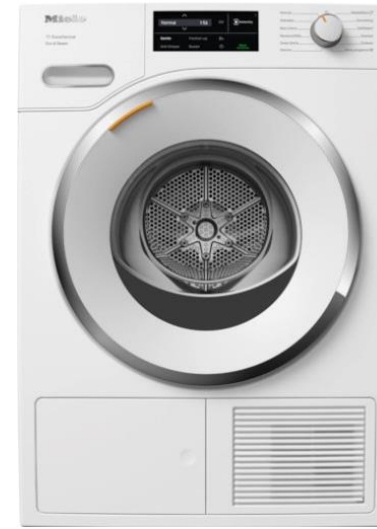
11619730



- Also an entry level unit, with the same features as the TXD 160 WP
- Black door version with glass partition vs solid door on TXD 160 WP

TXI 680 WP

11619850



Next model in the lineup, all the features of the TXD and the TWD, plus:

- Chrome ring and white door
- Updated ComfortSensor screen
- **+9 added drying programs**
- SoftSteam assist to further reduce wrinkling
- Dual fragrance slots

TXR 860 WP

11620030



All the features of the TXI 680 plus

- M-Touch controls
- Interactive drying assistant for different fabric types
- Ability to save favorites when modifying drying cycles
- Program sequence indicator

Laundry stacking options and accessories

WTV 502

9256140



Standard Miele stacking kit

- For space saving and safe installation of a washer-dryer stack
- Adds approximately 1" to the overall height stack, so overall height will be at 67" for the tower

WTV 512

9351790



Miele stacking kit

- With integrated drawer for convenient storage of items or as a platform for folding clothes; push to open mechanism
- Adds approximately 4" to the overall height stack, so overall height will be at 71" for the tower

WTS 610

12349900



Miele laundry pedestal

- For more convenient loading and unloading of laundry
- Push to open drawer adds extensive storage capability
- Adds approximately 12" to the overall height of the units

NEMA 14-30

10983750



Miele **4 prong** NEMA adapter

- Adapter for connecting W1 and T1 to a 208/240 V outlet
- Allows both washer and dryer to operate from an existing dryer outlet

MasterCool Refrigerator Columns

24"



30"



36"



- [K 2602 Vi](#) – 24" Right Hinge, Panel Ready - 11501360
- [K 2612 Vi](#) – 24" Left Hinge, Panel Ready - 11505260
- [K 2602 SF](#) - 24" Right Hinge, Stainless Front - 11502570

- [K 2802 Vi](#) - 30" Right Hinge, Panel Ready - 11502590
- [K 2812 Vi](#) - 30" Left Hinge, Panel Ready - 11502640
- [K 2802 SF](#) - 30" Right Hinge, Stainless Front - 11502700

- [K 2902 Vi](#) - 36", Right Hinge, Panel Ready - 11502710
- [K 2912 Vi](#) – 36" Left Hinge, Panel Ready - 11502720
- [K 2902 SF](#) - 36" Right Hinge, Stainless Front - 11502840

Features

Energy Star Rated
 Push to Open
 Brilliant Light (LED)
 MasterFresh – Food stays fresh up to 3x longer
 Wi-Fi
 Soft Close
 Sabbath Mode
 Hinges are reversible on Vi models, need hinge cover to close original hinge opening after reversal

Accessories

[KSK2002](#) – Merge Kit - 10984130
[KKF-RF](#) - Replacement Air Filter - 7366280
 When installing SF models together you will need a Top frame Kit:

KTF1042 – 42" Top Frame Kit - 10984920
KTF1048 - 48" Top Frame Kit - 12556870
KTF1054- 54" Top Frame Kit - 12556860
KTF1060 - 60" Top Frame Kit - 12556850
KTF1066 - 66" Top Frame Kit - 12556810
KTF1072 – 72" Top Frame Kit - 12556830
 10985020 - **Left Hinge Cover**
 10985010 - **Right Hinge Cover**

Panels

[KFP 2405](#) – 24" Column Panel, No Logo or Handle - 11499070
[KFP 3005](#) – 30" Column Panel, No Logo or Handle - 11499080
[KFP 3605](#) – 36" Column Panel, No Logo or Handle - 11499100

All Panels are Clean Touch Stainless Steel

MasterCool Freezer Columns

18"



[F 2412 Vi](#) - Left Hinge, Panel Ready
11503300

[F 2412 SF](#) - Left Hinge, Stainless Front
11503310

[F 2462 Vi](#) - Right Hinge, Panel Ready,
External Ice & Water - 11503420

[F 2472 Vi](#) - Left Hinge, Panel Ready,
External Ice & Water - 11503430

[F 2472 SF](#) - Left Hinge, Stainless Front,
External Ice & Water - 11503530

All Above Models Have an Ice Maker

24"



[F 2662 Vi](#) - Right Hinge, Panel Ready,
External Ice & Water - 11503540

[F 2672 Vi](#) - Right Hinge, Panel Ready,
External Ice & Water - 11503550

[F 2672 SF](#) - Left Hinge, Stainless Front,
External Ice & Water - 11503570

Features

- Energy Star Rated
- Push to Open
- Brilliant Light (LED)
- SuperCool
- Wi-Fi
- Soft Close
- Sabbath Mode

Hinges are Reversible on Vi models *without external ice and water*, need hinge cover to close original hinge opening after reversal

30"



[F 2802 Vi](#) - RH, Panel Ready - 11503330

[F 2812 Vi](#) - LH, Panel Ready - 11503340

[F 2812 SF](#) - LH, Stainless Front - 11503350

All Above Models Have an Ice Maker

Accessories

[KSK2002](#) - Merge Kit - 10984130

[KWF2000](#) - Water Filter - 11480330

When installing SF models together you will need a Top frame Kit:

[KTF1042](#) - 42" Top Frame Kit - 10984920

[KTF1048](#) - 48" Top Frame Kit - 12556870

[KTF1054](#) - 54" Top Frame Kit - 12556860

[KTF1060](#) - 60" Top Frame Kit - 12556850

[KTF1066](#) - 66" Top Frame Kit - 12556810

[KTF 1072](#) - 72" Top Frame Kit - 12556830

10985020- Left Hinge Cover

10985010- Right Hinge Cover

36"



[F 2902 Vi](#) - Right Hinge, Panel Ready - 11503360

[F 2912 Vi](#) - Left Hinge, Panel Ready - 11503390

[F 2912 SF](#) - Left Hinge, Stainless Front - 11503410

All Above Models Have an Ice Maker

Panels

[KFP 1805](#) - 18" Column Panel, No Logo or Handle - 11499020

[KFP 1845](#) - 18" Column Panel for External Dispenser Model,
No logo or Handle - 11499570

[KFP 2445](#) - 24" Column Panel for External Dispenser Model,
No Logo or Handle - 11499620

[KFP 3005](#) - 30" Column Panel, No Logo or Handle - 11499080

[KFP 3605](#) - 36" Column Panel, No Logo or Handle - 11499100
Standard handle - [DS7308](#) - 12047020

All Panels are Clean Touch Stainless Steel

MasterCool Bottom Mounts – Premium trim

30"



[KFMC 3632 L](#) – Left Hinge, Panel Ready - 12489460
[KFMC 3632 R](#) – Right Hinge, Panel Ready - 12489460

36"



[KFMC 3642 L](#) – Left Hinge, Panel Ready- 12489490
[KFMC 3642 R](#) – Right Hinge, Panel Ready - 12489480

36"



[KFMC 3642 FD](#) – French Door, Panel Ready - 12489500

Features

- BrilliantLight – Perfectly illuminated
- M Touch Pro – Convenient operation with the tap of a finger
- SmartLight – Individually customizable lighting
- Longlife AirClean System – Fresh food without unpleasant odors
- Icemaker – Ice cubes for cool drinks
- MasterFresh Pro – Protective storage for long-lasting freshness
- Miele@Home – Cleverly networked

Included Accessories

- Ice scoop
- Longlife AirClean filter
- Water filter

Longlife AirClean Filter



A set of two regenerable odour filters that can be used in MasterCool III Bottom Mounts.

KKF 1000-R
12688020

Water filter



All MasterCool III Bottom Mounts are fitted with a water filter as standard. A distinction is made between the bypass water filter and the activated carbon filter, which filters chlorine out of the water in addition to suspended particles.

A **carbon filter** is used in all models, which needs to be replaced every 6 months.

[KWF 2000](#) 11480330

Ice scoop



With the special shape, the ice scoop supplied sits comfortably in the hand and can hold a large number of ice cubes.

MasterCool Bottom Mounts – Prestige trim

30"



[KFMC 3836 L](#) – Left Hinge, Panel Ready - 12489330
[KFMC 3836 R](#) – Right Hinge, Panel Ready - 12489320

36"



[KFMC 3846 L](#) – Left Hinge, Panel Ready - 12489410
[KFMC 3846 R](#) – Right Hinge, Panel Ready - 12489400

36"



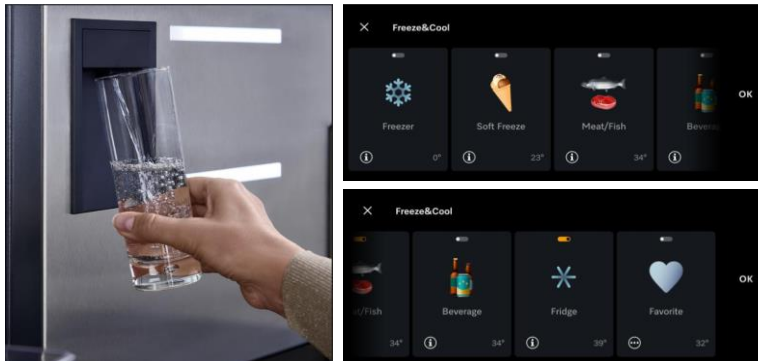
[KFMC 3846 FD](#)– 36" French Door, Panel Ready – 12489430
Freeze&Cool – Use storage space flexibly
[KFMC 3858 FD](#)– 42" French Door, Panel Ready - 12489440
Freeze&Cool – Use storage space flexibly
Dual Icemaker – Different ice cubes - ideal for your drink

42"



Features

- FoodView – Everything always in view
- Longlife AirClean System – Fresh food without unpleasant odors
- Icemaker – Ice cubes for cool drinks
- Water dispenser – Chilled water at any time**
- BrilliantLight Pro – Practical illumination with elegant LEDs
- M Touch Pro – Convenient operation with the tap of a finger
- SmartLight – Individually customizable lighting

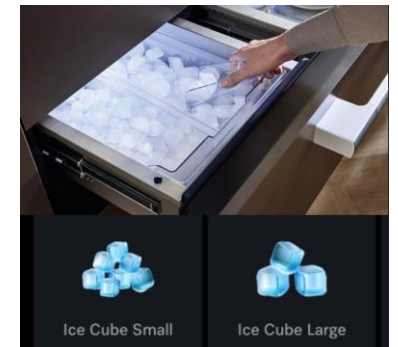


Included Accessories

- Ice scoop
- Longlife AirClean filter
- Water filter

**KFMC 3858 only features:
Dual ice maker**

*All Prestige models with dual freezer drawers have a convertible right side top freezer drawer



MasterCool Accessories

Panel options (handles not included)

KFMC 3632 R/L,
KFMC 3836 R/L



Front panel fridge:

[KFP 3031 ed/cs](#)

12687730

Front panel freezer:

[KFP 3032 ed/cs](#)

12687750

KFMC 3642 R/L



Front panel fridge:

[KFP 3631 ed/cs](#)

12687780

Front panel freezer:

[KFP 3632 ed/cs](#)

12687790

KFMC 3642 FD



Front panel fridge:

[KFP 3633 ed/cs](#)

12687800

(Need 2 of these)

Front panel freezer:

[KFP 3632 ed/cs](#)

12687790

KFMC 3846 R/L



Front panel fridge:

[KFP 3638 ed/cs](#)

12687810

[KFP 3639 ed/cs](#)

Front panel freezer

(upper drawer):

12687830

[KFP 3636 ed/cs](#)

Front panel freezer

(lower drawer):

12687840

KFMC 3846 FD



Front panel fridge:

[KFP 3637 ed/cs](#)

12687860

(Need 2 of these)

[KFP 3639 ed/cs](#)

Front panel freezer

(upper drawer):

12687830

[KFP 3636 ed/cs](#)

Front panel freezer

(lower drawer):

12687840

KFMC 3858 FD



Front panel fridge:

[KFP 4231 ed/cs](#)

12687870

(Need 2 of these)

[KFP 4232 ed/cs](#)

Front panel freezer

(upper drawer):

12687950

[KFP 4233 ed/cs](#)

Front panel freezer

(lower drawer):

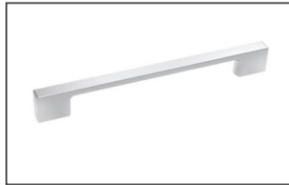
12687980

Handle options



[DS 7308](#)

Contourline
12047020



[DS 7808](#)

Pureline
12046910

Toe kick covers



[KTK 3030 ed](#)

Stainless Steel plinth cover
for 30" models

12687180

[KTK 3630 ed](#)

Stainless Steel plinth cover
for 36" models

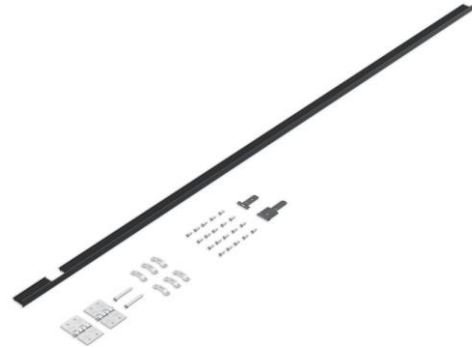
12687210

[KTK 4230 ed](#)

Stainless Steel plinth cover
for 42" models

12687220

MasterCool Accessories



[KSK 3001](#)

Combining 2 30" MC3 units
12686320

[KSK 3002](#)

Combining a 30" MC3 with
either a 36" or a 42" MC3 unit
12687090

[KSK 3003](#)

Combining a 36" or 42" MC3 unit
with another 36" or 42" MC3 unit
12687120

**The side-by-side kits of the
new generation no longer
have a built-in heating
element; this is already
integrated in the side wall of
the appliances.**



[KSK 3004](#)

Combining a MC3 bottom mount
with a MC 2 bottom mount
12687140



Proud mount kits

[KFK 3001](#) - 12687400

Décor frame kit for a 30" MC3 unit

[KFK 3601](#) - 12687420

Décor frame kit for a 36" MC3

[KFK 4201](#) - 12687430

Décor frame kit for 42" MC3

[KFK 6001](#) - 12687450

Décor frame kit for 2 30" MC3s

[KFK 7201](#) - 12687480

Décor frame kit for 2 36" MC3s

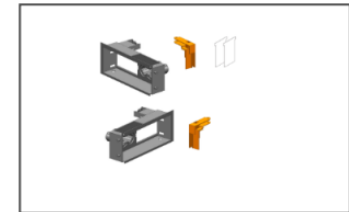


Trim Kit

[KTT 3001](#)

12687150

For installation in a traditional niche



Door direction change kit

[KHK 3002](#)

12687710

MasterCool Wine Units

24"



24" w/
Sommelier Set



Features
Push2Open
Brilliant Light
DynaCool
FlexiFrame Racks w/ Chalk
Board Labeling
3 Separate Temperature Zone
Can Store up to 104 Bottles of
Various Sizes
Sabbath Mode
UV Tinted glass
Soft Close
Wi-Fi
All Units Have Glass Door

Panels & Accessories
[KFP 2455](#) – 24" Stainless Panel No Logo or handle - 11499630
Standard handle – [DS7308](#) – 12047020
When installing SF models together you will need a
Top frame Kit:
[KTF1048](#) - 48" Top Frame Kit- 7337440
Merge kit: [KSK2002](#) - 10984130
Hinge Covers Needed When Reversing the Door
10985020- **Left Hinge Cover**
10985010- **Right Hinge Cover**

[KWT 2602 Vi](#) – Right Hinge Panel Ready - 11503590
[KWT 2612 Vi](#) - Left Hinge Panel Ready – 11503610
[KWT 2602 SF](#) – Right Hinge Stainless Front - 11503620
[KWT 2612 SF](#) – Left Hinge Stainless Front - 11503640

[KWT 2662 ViS](#) - Right Hinge, Panel Ready - 11503650
[KWT 2672 ViS](#) – Left Hinge Panel Ready - 11503660
[KWT 2662 SFS](#) - Right Hinge Stainless Front – 11503670

PerfectCool Units Freestanding

KFN 4776 ED

11954030



Freestanding fridge-freezer with DailyFresh and NoFrost in 30" width for a lot of storage space.

KFN 4799 DDE

11951210



Freestanding 24" fridge-freezer with DailyFresh, NoFrost, and IceMaker for fresh ice cubes any time.

PerfectCool Units

Built In Columns and Bottom Mounts

FNS 7794 E

11911910



24" PerfectCool freezer with NoFrost and 8 freezer drawers on telescopic runners for max. convenience. Custom panels only

KS 7793 D

11749850



24" PerfectCool refrigerator with PerfectFresh Active, FlexiLight 2.0, and FlexiTray for maximum convenience. Custom panels only

KFN 7795 D

11749900



24" PerfectCool fridge-freezer PerfectFresh Active, DynaCool, and IceMaker Custom panels only

KFN 9859 iDE

12153760 LH
12153750 RH



30" PerfectCool fridge-freezer with generous large capacity and ice maker.
Panel ready only
Top panels – 9699670
Bottom panels – 9699700
Handles purchased separately
Standard handle – [DS7308](#) – 12047020

KFNF 9959 iDE

12153770



36" French Door Bottom-mount Unit for maximum convenience with a large capacity and ice maker.
Panel ready only
Top panels – [12556510](#)
Bottom panels – [12556520](#)
Handles purchased separately
Standard handle – [DS7308](#) – 12047020
(4 needed)

Undercounter refrigeration and other wine storage

K 31222 Ui

10799700



24" built-under refrigerator
Compact design with a practical interior layout. Reversible hinge and dishwasher safe door shelving

Panel ready only

24" built in wine storage

- Capacity – 80 .75L bottles
- 2 temperature zones
- Sommelier set
- Wi-Fi and LED lighting
- 8 shelves
- [Stainless panel option](#) – 11329620
- Standard handle – [DS7308](#) – 12047020



KWT 6722iS

PerfectCool wine unit
11329860



KWT 6312 UGS

10028650



24" built-under wine storage unit with Push2open door and SommelierSet.

- Active Air Clean filters and LED lighting
- UV protected glass door
- Capacity – 17 .75L wine bottles with Sommelier set, 46 without
- Single temperature zone
- Reversible door, right hinge standard
- Can be mounted side by side

KWT 6322 UG

[Black](#) 10028620
[Stainless](#) 11545800



24" built-under wine storage unit with Push2open door

- Flexiframe shelving
- UV protected glass door
- Active Air Clean filters
- LED lighting
- 2 temperature zones
- Capacity – 34 .75L wine bottles
- Reversible door, right hinge standard

KWTUS 7172 F

Panel ready 12519520



24" built-under wine storage unit **(NEW)**

- Flexiframe shelving
- UV resistant insulated glass door
- Active Air Clean filters
- LED lighting
- 1 temperature zone
- Capacity – 44 .75L wine bottles
- Reversible door, right hinge standard