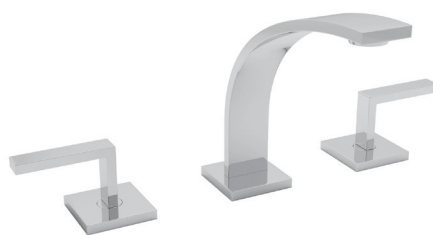


ROHL®

WAVE® BATH COLLECTION



The ultra-sleek, ultra-luxury Wave™ Collection for the bath comes from the imagination of Italian designer Nevio Tellatin, known for pushing the boundaries of form and line. Designed for ROHL®, this Collection combines geometry and nature for a truly modern piece that's a work of art. The faucet's streamlined and aerodynamic curve captures the flowing motion of an arc of water, juxtaposed with right-angled handles. Sophisticated, seamless, and striking, Wave is a stand-out addition to baths of luxurious modern style.



WA102



HOUSE OF ROHL

COLLECTION HIGHLIGHTS

FINISH OPTIONS

APC



Polished
Chrome

STN



Satin
Nickel

HANDLE DESIGN

L



Metal Lever

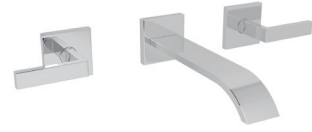
FAUCETS



WA652



WA102



WA751

ACCESSORIES



QU400



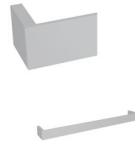
QU420



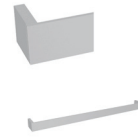
QU710



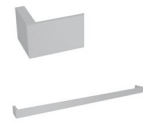
QU220



QU101



QU102



QU103

TUB FILLERS



TCA05HF1



WA26



WA721



WA24

TUB FILLER PACKAGE

3/4" TUB FILLER OPTION 1



SHOWER TRIMS



TMN51W1



TMN44W1



TMN23W1



TMN47W1



TMN45W1



WA720

SHOWER PACKAGE

PRESSURE BALANCE SHOWER OPTION 1



1/2" THERM/PRESSURE BALANCE OPTION 1



1/2" THERM/PRESSURE BALANCE OPTION 2



3/4" THERMOSTATIC SHOWER OPTION 1

