



DISTRIBUTOR PRICE BOOK

PRICING EFFECTIVE MARCH 1, 2024

SOLID. STATE.

www.StateWaterHeaters.com

CONTENTS

Terms and Conditions.....	2
Factory Freight and Warehouse Terms	3
RESIDENTIAL ELECTRIC	
Premier® AL Smart Hybrid Electric Heat Pump	4
Premier® 120V Plug-In Hybrid Electric Heat Pump	4
Premier® Hybrid Electric Heat Pump Water Heaters	4
Heat Pump Water Heater Air Duct Adaptor Kits	5
ProLine® Master Smart Electric	5
ProLine® Master Smart Electric Grid-Capable.....	5
ProLine® Master Electric	6
ProLine® Grid-Capable Electric	6
ProLine® Electric	6
ProLine® Specialty Products (Compact, Lowboy, Table Top, & Point-of-Use Models)	7
Mobile Home.....	7
KW Input Availability.....	8
Ordering Information for Residential Electric Water Heaters	9
Universal Residential Accessories.....	10
Residential Extended Warranty Kits.....	11
RESIDENTIAL SOLAR	
Select® Geothermal Storage Tanks	12
Premier® Indirect/Direct Solar Booster Tanks	13
Residential Solar Extended Warranty.....	13
RESIDENTIAL GAS	
ProLine® XE High Efficiency (Power Vent, Power Direct Vent).....	14
ProLine® XE Non-Condensing Flue Damper	14
ProLine® XE Non-Condensing Ultra-Low NOx Power Direct Vent	15
ProLine® XE Non-Powered Damper	15
ProLine® XE Non-Condensing Ultra-Low Nox Flue Damper	15
ProLine® XE Power Vent.....	16
ProLine® XE Power Direct Vent Sidewall/Roof Vent	16
ProLine® XE Ultra-Low NOx Power Vent.....	16
ProLine® Master Ultra-Low NOx.....	17
ProLine® Master Atmospheric Vent.....	17
ProLine® Ultra-Low NOx Direct Vent.....	18
ProLine® Direct Vent Sidewall Vent.....	18
ProLine® Atmospheric Vent.....	19
ProLine® Atmospheric Vent High Capacity.....	19
ProLine® Ultra-Low NOx.....	20
ProLine® Ultra-Low NOx High Capacity.....	20
Polaris® High Efficiency Residential.....	20
ProLine® Manufacturing Housing	21
Manufactured Housing Roof Jack Kits	21
RESIDENTIAL TANKLESS	
ProLine® XE Non-Condensing Concentric Vent	22
ProLine® XE Ultra-Low NOx Non-Condensing.....	22
Adapt™ Premium Condensing with X3®	23
ProLine® XE Condensing with X3® Scale Prevention Technology.....	23
ProLine® XE Non- Condensing with X3® Scale Prevention Technology	24
ProLine® XE Condensing with Recirculation Pump	24
ProLine® XE Ultra-Low NOx Condensing High Efficiency	24
Tankless Venting Components.....	25

Tankless Venting Kits	26
ProLine® XE Combi Boilers	27
Two and Four Chamber Electric Tankless	27

COMMERCIAL

Commercial Gas & Electric Information	28
Building Management System BACnet and MODBUS Interface	29

COMMERCIAL GAS

Sandblaster® Self Cleaning	30
Sandblaster® Force™ Power Direct Vent	31
Sandblaster® SBL Ultra-Low NOx	31
Sandblaster® SBL Low-NOx Single Flue.....	32
Force™ 90 High Efficiency Power Vent	32
Force™ 90+ High Efficiency Power Direct Vent	32
Modulating Ultra Force™	33
Modulating Ultra Force™ XL	33
Modulating Ultra Force™ LV.....	34
Polaris® High Efficiency Commercial	34
Titan™ Power Gas Burner GPG.....	35
Titan™ Power Oil Burner GPO.....	35

COMMERCIAL TANKLESS

Commercial Rack System.....	36
Commercial Tankless Non-Condensing	36
CT-199 Commercial Tankless Condensing	37
TX1 Commercial Tankless on Tank	37

ELECTRIC TANKLESS

Two and Four Chamber Electric Tankless.....	38
---	----

COMMERCIAL ELECTRIC

Light-Service Tank-Type	39
Commercial Heat Pump.....	39-40
Patriot™ Light-Duty Tank-Type Electric.....	41
Sandblaster® Self-Cleaning Surface Mounted Thermostats.....	42
Sandblaster® Self-Cleaning Immersion Thermostats.....	43
Statesman® Premium Heavy-Duty.....	44-46
Statesman® Electric Water Heater Model Number Breakdown.....	46
Large Volume ASME Vertical and Horizontal	47-49

COMMERCIAL STORAGE TANKS

Storage Tanks.....	50-53
Custom Storage Tank Model Number Break Down	53
Custom Storage Tanks Adder and Options	54

COMMERCIAL & RESIDENTIAL PUMP TANKS

Pump Mate® Diaphragm Pump Tanks	55
Pump Mate® Horizontal Diaphragm Pump Tanks	55
Glass Lined and Galvanized Storage Tanks	56

COMMERCIAL & RESIDENTIAL EXPANSION TANKS

Therm-O-Flex™ Expansion Tanks for Residential & Commercial.....	57
Waterguard® Expansion Tanks	58
TW Series Expansion Tanks.....	58
Commercial Stocking Program	59
Commercial Freight Policy.....	60
Department Information.....	61

TERMS OF SALE

Prices are effective at time of order. Prices are subject to change without notice. Prices are subject to any sales or use tax that may be assessed thereon. Prices are F.O.B. factory manufacture.

ADD ON

Prices are net.

TERMS

2% 10th Prox, Net 25th.

WAREHOUSE SHIPMENTS

(Other than McBee, SC; El Paso, TX; and Ashland City, TN)

Prices are F.O.B. warehouse. Distributor price and regular terms apply. No freight allowance.

TRANSPORTATION CLAIMS

Merchandise shipped to our customer becomes property of the buyer upon receipt by the carrier. It is necessary that the merchandise be carefully inspected upon receipt to ensure the units are damage-free. In event of either merchandise shortage or damage, the buyer's receiving agent should have the carrier's agent make notation of the condition or shortages on their receiving report so a claim can be filed against the carrier. If damage is discovered after unpacking, the carrier should be notified at once, so inspection can be made and the claimed damage substantiated by the carrier. The buyer must file the claim under any circumstance.

RETURN OF MERCHANDISE

No merchandise may be returned to the factory or warehouse for credit without prior written authorization from State Water Heaters. If merchandise is returned (providing it is new and unused), it must be sent freight prepaid and will be subject to a minimum 25% restock charge. All merchandise returned without prior authorization will be refused and returned to the customer with any incurred expenses charged back to the customer. Build-to-order merchandise will be reviewed on a production status basis.

Scan the QR code below to access all necessary forms. Sign into the portal, click documents, warranty documents.



LOAD FACTOR

The load factor represents the percent of cube an individual model consumes in a high cube, 53' trailer. A full load order is quantified when the sum of the load factors equals 100 points. Single-stop load must equal 100 points, two-stop loads should equal 98 points.

Distance between the first and last stop must not exceed 150 miles without prior approval from the Customer Service Department. All stops must be unloaded in a single day.

Load factor percentages for pump and expansion tanks may be used to determine the load factor of a load, however will not count towards the 60-unit minimum order requirement.

Commercial water heaters load percentages may not be used when calculating the necessary points for a qualifying residential truckload.

The total load factor of a commercial order will determine whether the order qualifies as a truckload.

SPECIAL DELIVERY SERVICES

Please call the customer service department to inquire on the cost of special services such as:

- Power lift gate deliveries \$100 per order
- Inside and construction site deliveries
- Notification before delivery calls
- Less than 53' trailer
- COD billings
- Driver assist and unload
- Other special services as needed
- Unloading delay beyond 2 hours

TO ENSURE PROMPT PO PROCESSING, PLEASE SEE THE FOLLOWING PO REQUIREMENTS:

QUALIFYING PO GUIDELINES	
Required	If Applicable/ Accessories
Account Number	Approved and Current Quote
Bill to/Ship to Address	Note if Collect and provide Collect #
Correct Price for Each Line	Note if Quickship with \$100 handling fee
Shipping Condition	Correct Quantity to meet FFA terms
PO Number	Gas Type
Model	ASME
Quantity	High Altitude
Circuit	Burner
Number of Elements	Barometric Damper
Wattage	Vent
Voltage	Termination Kits
Anode Type/SMR/T&P Location	
Phase	

- If special requests are not on the PO, they will not be applied to the order
- Be sure quotes are approved and current before submitting a PO
- Ensure the order is correctly priced and with correct quantity/loadfactor to reach FFA terms
- On quickships, add the phrase "24 Hr. Quick Ship" and note the \$100 handling fee
- When preparing truckloads, please provide the cut and fill unit options
- If PO is missing any of the required information from "PO Guidelines" it will not be processed at the time it is submitted

FACTORY FREIGHT TERMS

Residential Water Heater Shipping Policy	Freight Allowed
60 UNITS OR MORE (which allows manufacture to pool with other orders)	YES
60 UNITS OR LESS	NO
DROP-OFF DELIVERY OF 25 – 59 UNITS	\$100/STOP
PUMP AND EXPANSION TANKS AND TANKLESS HEATERS ON QUALIFYING RESIDENTIAL SHIPMENTS	YES
ORDERS OR ORDER ADDITIONS OF LESS THAN 55 UNITS AND ACCOMPANIED WITH INSTRUCTIONS WHICH DO NOT ALLOW ORDER COMBINATIONS TO BE MADE	NO
FACTORY PICK-UP ALLOWANCE ON 60 OR MORE UNITS (McBee, SC, El Paso, TX, and Ashland City, TN)	\$5.00 PER UNIT

Tankless Water Heater Shipping Policy	Freight Allowed
16 UNITS OR MORE	YES
15 UNITS OR LESS	NO
ADD-ON TO ALREADY QUALIFIED TANK-TYPE ORDER	YES
EXPRESS SHIPMENTS (10 UNITS OR LESS) SHIP WITHIN 24 HOURS	NO

Tankless Water Heaters **DO NOT** qualify for total truckload volume.
 Separate FFA policy applies to venting and other accessories. Minimum order of \$750 must be placed for venting and other accessories combined.
 \$30 handling per unit for express shipments within 24 hours-Residential.
 Commercial tankless omitted from express shipment.
 \$100 fee for express shipments on commercial tankless.

Pump and/or Expansion Tank Shipping Policy	Freight Allowed
60 UNITS OR MORE	YES
59 UNITS OR LESS	NO

Pump and expansion tanks **DO** qualify for TOTAL truckload volume.

Light-Service Commercial Water Heater Shipping Policy	Freight Allowed
ORDERS COMBINED WITH A QUALIFYING FREIGHT ALLOWED RESIDENTIAL ORDER (Shipping from Ashland City, TN or El Paso, TX only.)	YES

Light-Service models **DO** count towards the minimum 60 unit threshold.
 Light-Service models **DO** qualify for total truckload volume.

Commercial Water Heater Shipping Policy	Freight Allowed
ANY STANDARD LEAD TIME QUANTITY SHIPPED FROM FACTORY LOCATIONS (MCBEE, SC, EL PASO, TX, AND ASHLAND CITY, TN)	YES
STORAGE TANKS LISTED IN THIS BOOK AND SHIPPED FROM A FACTORY LOCATION (As part of the standard commercial program)	YES
MANUFACTURED PRODUCTS AND SKID MOUNTED SYSTEMS	NO
WAREHOUSE SHIPMENTS (no handling charge)	NO
EMERGENCY SHIPMENTS (5 days or less requested ship date)	YES

Light-Service Commercial models are not covered by this policy.

WAREHOUSE TERMS

All warehouse shipments will be invoiced at current prices and \$15 per residential unit. All shipments are F.O.B. Warehouse (freight collect).

PREMIER® AL SMART HYBRID ELECTRIC HEAT PUMP WATER HEATER

10-Year Limited Tank/10-Year Limited Parts Warranty

- ENERGY STAR® certified
- NEEA Tier 4 qualified
- Integrated iCOMM® smart connectivity
- Leak detection with alarm

Model Number	Nominal Capacity	Rated Storage Volume	UEF	Standard Voltage	Number of Elements	Standard Input (kW) Upper/Lower	Dimensions in Inches		Load Factor	Approx. Shipping Weight (lbs)	Net Distributor Price
							Height	Diameter			
HPSX-50-DHPT	50	46	3.80	208/240	2	4500/4500	63	22	1.39	196	\$1,747
HPSX-66-DHPT	66	67	3.70	208/240	2	4500/4500	61.5	26.5	1.59	284	2,196
HPSX-80-DHPT	80	82	3.88	208/240	2	4500/4500	69	26.5	1.59	302	2,644

Requires 30 Amp breaker
Top T&P option not available.

PREMIER® 120V PLUG-IN HYBRID ELECTRIC HEAT PUMP WATER HEATER

10-Year Limited Tank/10-Year Limited Parts Warranty

- ENERGY STAR® certified
- Plugs into standard wall outlet
- Whisper-quiet operation at 45 dBA
- Leak detection and water shutoff valve

Model Number	Nominal Capacity	Rated Storage Volume	UEF	Standard Voltage	Number of Elements	Standard Input (kW) Upper/Lower	Dimensions in Inches		Load Factor	Approx. Shipping Weight (lbs)	Net Distributor Price
							Height	Diameter			
HPVX-66-DHPT	66	68	3.20	120	2	900/900	61.5	26.5	1.59	289	\$2,490
HPVX-80-DHPT	80	82	3.00	120	2	900/900	69	26.5	1.59	307	2,905

Plugs into a standard 120V wall outlet (certified for use on a shared circuit)
Top T&P option not available.

PREMIER® HYBRID ELECTRIC HEAT PUMP WATER HEATERS

10-Year Limited Tank/10-Year Limited Parts Warranty

- ENERGY STAR® Qualified
- Northern Climate Tier 3 qualified

Model Number	Nominal Capacity	Rated Storage Volume	UEF	Standard Voltage	Number of Elements	Standard Input (kW) Upper/Lower	Dimensions in Inches		Load Factor	Approx. Shipping Weight (lbs)	Net Distributor Price
							Height	Diameter			
HPX-50-DHPTNE	50	46	3.45	208/240	2	4500/4500	63	22	1.39	196	\$1,637
HPX-66-DHPTNE	66	67	3.45	208/240	2	4500/4500	61	27	1.59	289	2,086
HPX-80-DHPTNE	80	82	3.45	208/240	2	4500/4500	69	27	1.59	307	2,534

Requires 30 Amp breaker
Top T&P option not available.

6-Year Limited Tank/6-Year Limited Parts Warranty

- ENERGY STAR® Qualified

Model Number	Nominal Capacity	Rated Storage Volume	UEF	Standard Voltage	Number of Elements	Standard Input (kW) Upper/Lower	Dimensions in Inches		Load Factor	Approx. Shipping Weight (lbs)	Net Distributor Price
							Height	Diameter			
HP6-50-DHPT	50	46	3.35	208/240	2	4500/4500	63	22	1.39	196	\$1,527
HP6-66-DHPT	66	67	3.42	208/240	2	4500/4500	61	27	1.59	289	1,976
HP6-80-DHPT	80	82	3.45	208/240	2	4500/4500	69	27	1.59	307	2,424

Requires 30 Amp breaker
Top T&P option not available.

HEAT PUMP WATER HEATER AIR DUCT ADAPTOR KITS

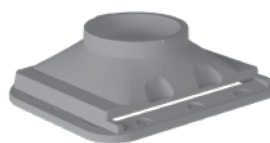
(For use with all HPX and HP6 models - Adapter is not needed for HPSX and HPVX models)

Duct adaptor kits can be used to redirect inlet and/or outlet air from or to other locations to permit installation in confined spaces, improve performance and maintain comfort in occupied areas of the home.

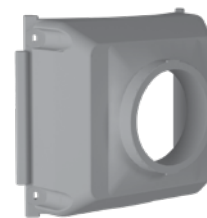
- Engineered solution – ensures optimal performance
- Allows confined space installation - no minimum space requirement if inlet and outlet are ducted
- Redirect outlet air to alternate location for confined space installations or greater comfort
- Draw inlet air from alternate location for confined space installations
- Single kit contains both inlet and outlet adapters
- Maximum length of duct is 50 feet – total length for inlet and/or outlet ducting
- Uses standard 8” flexible duct (field supplied) to redirect inlet and/or outlet air
- With optional duct booster fan, the maximum length of duct increases to 100 feet total length inlet and/or outlet

Model Number	Description	Approx. Shipping Weight (lbs)	List Price
100234320	Inlet and Outlet Air Duct Kit	5	*
100131328	Duct Booster Fan Kit	10	*

See the Duct Kit Installation Instructions and Heat Pump Water Heater Instruction Manual for complete installation instructions and requirements.



Inlet Adaptor



Outlet Adaptor

PROLINE® MASTER SMART ELECTRIC

8-Year Limited Tank/8-Year Limited Parts Warranty

Model Number	Nominal Gallon Capacity	Rated Storage Volume	UEF	Element Wattage 240V		Dimensions in Inches		Load Factor	Approx. Shipping Weight (lbs)	Net Distributor Price
				Standard	Maximum	Overall Height	Diameter			
TALL MODELS										
EE8-40-DFRT	40	36	0.93	5500	5500	60-1/4	20	0.69	106	\$803
EE8-50-DFRT	50	45	0.92	5500	5500	59	20-1/2	1.09	109	834
EE8-55-DFRT	55	55	0.94	5500	5500	56-1/2	24	0.83	145	972
SHORT MODELS										
EE8-40-DFRS	40	37	0.92	5500	5500	49-3/4	20-1/2	0.47	95	764
EE8-50-DFRS	50	46	0.92	5500	5500	49-1/4	23	0.60	117	834

Only available for 240V or 208V applications. 208 volt is only available with 4,500 watt elements. Equipped as dual element only; no single element configurations available.

PROLINE® MASTER SMART ELECTRIC GRID-CAPABLE

8-Year Limited Tank/8-Year Limited Parts Warranty

Model Number	Nominal Gallon Capacity	Rated Storage Volume	UEF	Element Wattage 240V		Dimensions in Inches		Load Factor	Approx. Shipping Weight (lbs)	Net Distributor Price
				Standard	Maximum	Overall Height	Diameter			
TALL MODELS										
EEA8-40-DFRT	40	36	0.93	5500	5500	60-1/4	20	0.69	106	\$883
EEA8-50-DFRT	50	45	0.92	5500	5500	59	20-1/2	1.09	109	914
EEA8-55-DFRT	55	55	0.94	5500	5500	56-1/2	24	0.83	145	1,052
SHORT MODELS										
EEA8-40-DFRS	40	37	0.92	5500	5500	49-3/4	20-1/2	0.47	95	844
EEA8-50-DFRS	50	46	0.92	5500	5500	49-1/4	23	0.60	117	914

Only available for 240V or 208V applications. 208 volt is only available with 4,500 watt elements. Equipped as dual element only; no single element configurations available.

PROLINE® MASTER ELECTRIC

8-Year Limited Tank /8-Year Limited Parts Warranty

Model Number	Nominal Capacity	Rated Storage Volume	UEF	Element Wattage 240V			Dimensions in Inches		Load Factor	Approx. Shipping Weight (lbs)	Net Distributor Price
				Standard	Minimum	Maximum	Diameter	Height			
TALL MODELS											
EN8-40-DORT	40	36	0.92	4500	3500	6000	18	61-1/4	0.86	118	\$743
EN8-50-DORT	50	46	0.92	4500	3000	6000	20-1/2	59	0.86	125	774
EN8-55-DORT	55	55	0.93	4500	2500	6000	24	56-1/2	0.78	145	912
SHORT MODELS											
EN8-40-DORS	40	37	0.92	4500	@ 4500	6000	20-1/2	49-3/4	0.48	109	704
EN8-40-DORSW	40	37	0.88	-	1000	4000	20-1/2	49-3/4	0.48	109	704
EN8-50-DORS	50	46	0.92	4500	2500	6000	23	49-1/4	0.58	161	774

Male 3/4" water connections on 8" center.

Models requiring a lower wattage than what is listed in the minimum wattage column and showing the @ symbol, will change to a "W" suffix model number.

"W" suffix models are available down to 1kW. (example: EN8-40-DORS using 4,000 watt elements or less will become "EN8-40-DORSW").

Model EN8-50-DORT is not available with wattages under 3,000 watts.

PROLINE® GRID-CAPABLE ELECTRIC

6-Year Limited Tank /6-Year Limited Parts Warranty

Model Number	Nominal Gallon Capacity	Rated Storage Volume	UEF	Element Wattage 240V		Dimensions in Inches		Load Factor	Approx. Shipping Weight (lbs)	List Price
				Standard	Max	Overall Height	Diameter			
TALL MODELS										
EE6-40-DURT†	40	36	0.93	4500	5500	60-1/4	20	0.89	106	\$793
EE6-50-DURT†	50	46	0.92	4500	5500	59	20-1/2	0.89	109	824
EE6-55-DURT†	55	55	0.94	4500	5500	56-1/2	24	0.76	145	962
SHORT MODELS										
EE6-40-DURS†	40	37	0.92	4500	5500	49-3/4	20-1/2	0.49	95	754
EE6-50-DURS†	50	46	0.92	4500	5500	49-1/4	23	0.60	117	824
LOWBOYS										
EE6-50-DULBS†	48	44	0.92	4500	5500	34	26-1/2	0.54	154	922

3/4" water connections on 8" center.

Only available for 208V and 240V applications. 208 volt is only available with 4,500 watt elements.

Equipped as dual element only, no single element configurations available.

Minimum wattage available is 4,500 watt elements.

Top T&P is not available on the 10-year lowboy models.

†For 10-year tank and 10-year parts warranty, change "6" to "X" in the model number (example: EE6-40-DURT becomes EEX-40-DURT).

PROLINE® ELECTRIC

6-Year Limited Tank /6-Year Limited Parts Warranty

Model Number	Nominal Capacity	Rated Storage Volume	UEF	Element Wattage 240V			Dimensions in Inches		Load Factor	Approx. Shipping Weight (lbs)	Net Distributor Price
				Standard	Minimum	Maximum	Diameter	Height			
TALL MODELS											
†EN6-30-DORT	30	27	0.89	4500	1000	6000	19	46-1/2	0.42	95	\$747
†EN6-40-DORT	40	36	0.92	4500	3500	6000	18	61-1/4	0.86	118	683
†EN6-50-DORT	50	46	0.92	4500	3000	6000	20-1/2	59	1.04	125	714
†EN6-55-DORT	55	55	0.93	4500	2500	6000	24	56-1/2	0.80	145	852
LOWBOY TOP CONNECT MODELS											
EN6-30-DOBS*	30	27	0.90	4500	1000	6000	20	39	0.55	95	793
†EN6-30-DORS	30	27	0.89	4500	1000	6000	22	39-3/4	0.52	94	768
†EN6-40-DORS	40	37	0.92	4500	@ 4500	6000	20-1/2	49-3/4	0.48	109	644
†EN6-40-DORSW	40	37	0.88	-	1000	4000	20-1/2	49-3/4	0.48	109	644
†EN6-50-DORS	50	46	0.92	4500	2500	6000	23	49-1/4	0.69	161	714
LOWBOY TOP CONNECT MODELS											
†EN6-30-DOLBS*	28	26	0.89	4500	1000	6000	20	30	0.40	90	806
†EN6-30-DOLS	28	26	0.90	4500	1000	6000	24	31 1/4	0.46	115	781
†EN6-36-DOLS	36	33	0.92	4500	@ 4500	6000	24	32	0.44	118	721
†EN6-40-DOLS	38	35	0.89	4500	1000	6000	26	33-1/2	0.54	118	721
†EN6-40-DOLBS*	38	35	0.92	4500	@ 4500	6000	23	32	0.49	118	728
†EN6-40-DOLBSW*	38	35	0.90	-	1000	4000	23	32	0.49	118	728
†EN6-50-DOLBS*	48	44	0.93	4500	@ 4000	6000	26-1/2	34	0.54	172	812
†EN6-50-DOLBSW*	48	44	0.91	-	1000	3500	26-1/2	34	0.54	172	812
†EN6-50-DOLS	51	48	0.92	4500	4000	6000	26-1/2	36	0.54	172	787

*Models ship with supplied insulation blanket.

†For 10-year tank and 10-year parts limited warranty, change "N6" to "SX" in select models and "R" to "N" in tall and short model number (example: ESX 40 DONT) Exception the EN6-40-DOLS is not available in a 10-year warranty.

Models requiring a lower wattage than what is listed in the minimum wattage column and showing the @ symbol, will change to a "W" suffix model number.

"W" suffix models are available down to 1kW. (example: EN6-40-DORS using 4,000 watt elements or less will become "EN6-40-DORSW").

Top T&P is not available on the 10 year lowboy models.

Model EN6-50-DORT is not available with wattages under 3,000 watts.

PROLINE® SPECIALTY

6-Year Limited Tank/6-Year Limited Parts Warranty

Model Number	Nominal Capacity	Rated Storage Volume	UEF	Element Wattage		Number of Elements	Dimensions in Inches		Load Factor	Approx. Shipping Weight (lbs)	Net Distributor Price
				Standard	Maximum		Diameter	Height			
COMPACT MODELS				120V	240V						
ES6-6-SOMS-K	6	6	N/A	1650	3000	1	14-1/4	15-1/4	0.09	35	\$333
ES6-10-SOMS-K	10	9	N/A	1650	6000	1	16	18-1/4	0.10	41	458
ES6-20-SOMS-K	19	17	N/A	2500	6000	1	18	24-3/4	0.18	68	496
ES6-20-SOMT-K	19.9	18	N/A	2500	6000	1	16	31-5/8	0.22	68	527
LOWBOY SIDE-CONNECT MODELS				240V							
EN6-30-DOMBS*	28	26	0.90	4500	6000	2	22	30	0.35	101	810
EN6-30-DOMS	28	26	0.91	4500	6000	2	24	31-1/4	0.46	115	785
EN6-40-DOMBS*	38	35	0.94	4500	6000	2	24	31-3/4	0.48	118	859
EN6-40-DOMBSW*	38	35	0.91	-	4000	2	24	31-3/4	0.48	118	859
EN6-40-DOMS	38	35	0.93	4500	6000	2	26	33-1/2	0.54	118	834
EN6-40-DOMSW	38	35	0.91	-	4000	2	26	33-1/2	0.54	118	834
TABLE TOP MODEL				240V							
EN6-38-20TT	38	35	0.90	4500	5500	2	24 x 25	36	0.69	150	734
POINT-OF-USE MODELS				120V							
ES6-2-SMT	2.5	2.6	N/A	1440 @ 120V		1	10-3/8 x 11-3/4	14-1/2	0.07	17	233
ES6-4-SMT	4	3.8	N/A	1440 @ 120V		1	10-3/8 x 11-3/4	19-1/4	0.06	20	260
ES6-6-SMT	6	5.9	N/A	1440 @ 120V		1	12-1/2 x 13-3/4	20	0.08	24	313

*Models ship with a supplied insulation blanket.

When ordering models EN6-40-DOMS or EN6-40-DOMSB the model number will change for wattages of 4kW to 1kW. The new model number will include a "W" suffix (example: EN6-40-DOMSBW)

PROLINE® MOBILE HOME

6-Year Limited Tank/6-Year Limited Parts Warranty

- Complies with HUD Standards for mobile homes/manufactured housing.

Model Number	Nominal Capacity	Rated Storage Volume	UEF	Standard Voltage	Wattage		Dimensions in Inches		Load Factor	Approx. Shipping Weight (lbs)	Net Distributor Price
					Upper Element	Lower Element	Diameter	Height to Top of Heater			
EN6-30-DMHT	30	27	0.90	120	3000	3000	19	46-3/4	0.43	98	\$594
EN6-30-DMHT	30	27	0.90	240	3500	3500	19	46-3/4	0.43	98	594
EN6-40-DMHSW	40	36	0.91	120	3000	3000	22	50	0.60	109	646
EN6-40-DMHSW	40	36	0.91	240	3500	3500	22	50	0.60	109	646
EN6-30-DMHLS*	28	26	0.90	120	3000	3000	22	30	0.40	96	594
EN6-30-DMHLS*	28	26	0.90	240	3500	3500	22	30	0.40	96	594

*Models ship with supplied insulation blanket.

Models have limited element options due to element size or other restrictions.

Top T&P option not available on these models.

KW Input Availability

Residential electric water heaters are shipped with the standard voltage and kW inputs shown unless otherwise specified when ordering. The chart below shows available inputs (in kW) for residential electric water heaters.

Models & Elements	Voltage	Wiring	kW Input Available														
6-Gallon Models Single-Element	120V	-		1.5	1.65	2	2.5	*3									
	208V	-	1	1.5		2	2.5	*3									
	240V	-	*1	1.5		2	2.5	3									
	277V	-		*1.5		2	2.5	*3									
	480V	-				2	2.5	*3									
10-Gallon through 20-Gallon Models Single-Element	120V	-		1.5	1.65	2	2.5	3									
	208V	-	1	1.5		2	2.5	3	3.5	3.8	4	4.5	*5	5.5	6		
	240V	-	*1	1.5		2	2.5	3	3.5	3.8	*4	4.5	5	5.5	6		
	277V	-		1.5		2	2.5	3			4	4.5	*5		*6		
	480V	-				2	2.5	3			*4	4.5	*5	*5.5	*6		
40-gallon Tall Model (Minimum 3500W)	120V	Interlock															
		Simultaneous				4	5										
	208V	Interlock							3.5	3.8	4	4.5	*5	5.5	6		
		Simultaneous				4	5	6	7	7.6	8	9	*10				
	240V	Interlock							3.5	3.8	*4	4.5	5	5.5	6		
		Simultaneous				4	5	6	7	7.6	*8	9	10	11			
	277V	Interlock									4	4.5	*5		*6		
		Simultaneous				4	5	6			8	9	*10		*12		
	480V	Interlock									*4	4.5	*5	*5.5	*6		
		Simultaneous				4	5	6			*8	9	*10	*11	*12		
	50/48 Gallon Lowboy Models (Minimum 4000W)	120V	Interlock														
			Simultaneous				4	5									
208V		Interlock									4	4.5	5	5.5	6		
		Simultaneous				4	5	6	7	7.6	8	9	10				
240V		Interlock									4	4.5	5	5.5	6		
		Simultaneous				4	5	6	7	7.6	8	9	10	11			
277V		Interlock									4	4.5	5		6		
		Simultaneous				4	5	6			8	9	10		12		
480V		Interlock									4	4.5	5	5.5	6		
		Simultaneous				4	5	6			8	9	10	11	12		
50-gallon Short and 55 Gallon Models (Minimum 2500W)	120V	Interlock					2.5	3									
		Simultaneous	3	3.3		4	5										
	208V	Interlock					2.5	3	3.5	3.8	4	4.5	5	5.5	6		
		Simultaneous	3			4	5	6	7	7.6	8	9	10				
	240V	Interlock					2.5	3	3.5	3.8	4	4.5	5	5.5	6		
		Simultaneous	3			4	5	6	7	7.6	8	9	10	11			
	277V	Interlock					2.5	3			4	4.5	5		6		
		Simultaneous	3			4	5	6			8	9	10		12		
	480V	Interlock					2.5	3			4	4.5	5	5.5	6		
		Simultaneous				4	5	6			8	9	10	11	12		
Remaining 30-Gallon through 50-Gallon Models	120V	Interlock		1.5	1.65	2	2.5	3									
		Simultaneous		3	3.3	4	5										
	208V	Interlock	1	1.5		2	2.5	3	3.5	3.8	4	4.5	**5	5.5	6		
		Simultaneous	2	3		4	5	6	7	7.6	8	9	**10				
	240V	Interlock	*1	1.5		2	2.5	3	3.5	3.8	**4	4.5	5	5.5	6		
		Simultaneous	*2	3		4	5	6	7	7.6	**8	9	10	11			
	277V	Interlock		1.5		2	2.5	3			4	4.5	**5		**6		
		Simultaneous		3		4	5	6			8	9	**10		**12		
	480V	Interlock				2	2.5	3			**4	4.5	**5	**5.5	**6		
		Simultaneous				4	5	6			**8	9	**10	**11	**12		

* Ahead of wattage indicates, Not Available with Incoloy elements (copper elements only) for those voltage and wattage.

** Ahead of wattage indicates 30-gallon mobile home and 30 gallon tall models, Not Available with Incoloy elements.

Some models using lower wattage elements will require a "W" suffix added to the model number. Refer to the Product Specification sheet to determine requirements by model.

Circuit Types

No "W" model for the EN6-50-DORT (minimum wattage is 3,000 watts)

C2 Circuit – 2 wire lead, single element models only

A6 Circuit – 2 wire lead, double element models, single phase interlocking

A9 Circuit – 3 wire lead double element models, 3-phase unbalanced or off peak (can be wired single phase) – not available 120v or 277v

P4 Circuit – 4 wire double element models simultaneous operation (can be wired 3-phase simultaneous or single phase simultaneous)

Caution should be taken when ordering P4 Circuit (simultaneous operation) to ensure breaker amperage is sufficient for increased amp pull.

Note: - Circuit types listed above DO NOT APPLY TO ELECTRONIC THERMOSTAT MODELS. Electronic Thermostat models 240v 4500w and 208v 4500w ET Circuits or 240v 5500 & 208v & 240v 4500w ES Circuit.

- Heat Pump and Solar Booster models are excluded from this table

ORDERING INFORMATION FOR RESIDENTIAL ELECTRIC WATER HEATERS

ProLine® Master models are equipped with upper and lower 240 Volt, 4,500 Watt stainless steel elements with a 2-wire non-simultaneous (A-6) circuit.

ProLine® double element models are supplied as standard with an Incoloy® stainless steel lower element and a copper upper element with a 2-wire non-simultaneous (A-6) circuit. Both elements are 240 Volt, 4,500 Watt elements.

- Any other optional voltage and wattage combinations ordered will be shipped with dual copper elements double Incoloy® (standard on ProLine Master) are ordered
- An \$8.00 upcharge will apply for upgrading to Incoloy element(s) standard equipment on Proline® Master models.
- There is no price deduction when ordering a single lower element
- An \$8.00 upcharge will apply to a 3-wire circuit
- A \$10.00 upcharge will apply to a 4-wire circuit
- Contact us for availability of other voltage and wattage elements
- For single element Incoloy heaters there is no upcharge

ProLine® Compact Specialty models are equipped with a single copper element in the voltage and KW ratings shown.

- Contact us for availability of other voltage and wattage elements.
- An \$8.00 upcharge will apply for upgrading to an Incoloy® element

ProLine® models are equipped with an electronic thermostat and digital user interface and dual 240 Volt 5,500 watt Incoloy® elements as standard.

- Optional 4,500 watt 240 volt elements may be ordered at no charge.
- Also available in 208 volt – contact us for available wattages

Other Notes:

- All models comply with HUD regulations
- All standard residential electric models 30 gallons or larger are shipped with a standard side mounted T&P valve installed.
- Residential electric models available with the optional top T&P are shipped with the T&P valve supplied in the box and not factory installed (except in some cases where NC code applies).
- Dimensions and specifications subject to change without notice in accordance with our policy of continuous product improvement.
- T&P valves designated as supplied or installed by exact model is subject to change.

UNIVERSAL RESIDENTIAL ACCESSORIES

VENTING COMPONENTS

APCOM® Recirculation Systems provide instant hot water comfort, save time, water and energy with the built-in timer. www.dontwaitforhotwater.com/distributor

Package Number	Description	Ampere	Connection	Housing Material	Check Valve	Speed	Approx. Shipping Weight (lb.)	Distributor Price
UNDER SINK SYSTEM								
100306289	APCOM® Undersink Instant Hot Water System, Model #UT1	0.60	Union	Stainless	Yes	1	10	*
UNDER SINK SYSTEM W/O POWER. PUMP INSTALLS AT TANK.								
100306288	APCOM® Instant Hot Water System, Model #FT1	0.46	3/4" MNPT x 1-1/4" Union	Stainless	Yes	1	10	*
100327168	APCOM® Instant Hot Water System for Tankless Water Heaters, Model #TV1	0.60	3/4" MNPT x 1" Union	Stainless	Yes	1	10	*
DEDICATED RETURN LINE SYSTEM								
100306290	APCOM® Hot Water Recirculation System, Model #RT1	0.60	Union	Stainless	Yes	1	10	*
100306341	APCOM® Hot Water Recirculation System-3 Speed, Model #RG3	Hi: 0.79 Med: 0.62 Low: 0.46	Flange, 4 Bolt	Stainless	Yes	3	10	*
BYPASS VALVES								
Package Number	Description	Usage		Housing Material	Max Pressure	Approx. Shipping Weight (lb.)	Distributor Price	
100306591	APCOM® Replacement Bypass Valve, Model #BPV	Add on to Model #FT1 kit		Brass	125 PSI	1	*	
100327167	APCOM® Replacement Bypass Valve for Tankless Water Heaters, Model #TBPV	Add on to Model #TV1 kit		Stainless/Brass	150 PSI	1	*	

PRODUCT PRESERVERS® POWERED ANODE SYSTEMS

The Product Preservers® Powered Anode System replaces sacrificial anodes which are normally shipped with water heaters. www.productpreservers.com

Package Number	Description	For Use In				Gallons	Approx. Shipping Weight (lb.)	Distributor Price
		Residential	Commercial	Gas	Electric			
100305721	Product Preservers® Powered Anode System	Yes	Yes	Yes	Yes	30 - 70	2	*
100324744	Product Preservers® Powered Anode System, Large	Yes	Yes	Yes	Yes	75 - 120	2	*

*For pricing, please visit State: https://www.statewaterheaters.com/state_parts_list.pdf or scan the QR code below with your phone.



RESIDENTIAL EXTENDED WARRANTY KITS

We offer multiple warranty kits that enable licensed plumbing contractors to extend the limited warranty of the tank and parts on eligible water heaters. The kits listed below extend the warranty on certain ProLine 6-year models to 8 or 10 years, and the warranty on 8-year ProLine Master models to 12 years.

All warranty extension kits contain instructions, an extension sticker, and a certification request form. The Stage I (4-year kit) & Stage II kit also include a hot water outlet, secondary anode assembly and a cold water nipple with heat traps. This hot water outlet anode assembly must be installed for warranty compliance.

Extended Warranty Kits must be installed within 30 days of the water heater installation date. The below tables show the eligible models for specific extended warranty kits.

STAGE I GAS MODELS (2-YEAR & 4-YEAR)			
GS6 30 ORBT	GS6 30 OCT	GS6 30 ORBS	GS6 30 OCS
GS6 40 BRBT	GS6 40 BCT	GS6 40 BRBS	GS6 40 BCS
GS6 40 OCT	GS6 40 RCT	GS6 50 BRT	GS6 50 BCT
GS6 50 RCT	GS6 50 XCT	GS6 50 BCS	GS6 55 XCT

STAGE I ELECTRIC MODELS (2-YEAR & 4-YEAR)		
EN 6 30 DORT	EN 6 40 DORT	EN 6 50 DORT
EN 6 40 DORS	EN 6 30 DORS	EN 6 30 DOBS
EN 6 30 DOLS	EN 6 55 DORT	EN 6 50 DORS
EN6 36 DOLS	EN 6 30 DOLBS	EN 6 40 DOLBS
EN6 50 DOLS	EN6 50 DOLBS	

STAGE II GAS MODELS			
GS6 30 ORUT	GS6 40 BRUT	GS6 50 BRUT	GS6 40 BCUS
GS6 40 BCUT	GS6 50 BCUT	GS6 50 RCUT	GS6 40 YBVIS
GS6 40 YBDS	GS6 50 YBDS	GS6 50 YRDS	GS6-50-UBVIT
GS6-40-BFUT	GS6-50-BUFT	GS6-40UBVIT	GS6 50 YRVHSL 5
GS6-40-BDHT	GS6-50-UBPDT	GS6 50 YRVIT	GS6 50 YRPDTL 5
GS6-50-BDHT	GS6 40 YRVIT	GS6 50 YBPDT	GS6 40 YBFS
GS6-40-UBPDS	GS6 40 YBPDS	GS6 50 YBFT	GS6 75 YRVHTL
GS6 50 YBVIS	GS6 40 YBFT	GS6 50 YBFS	GS6 75 YRPDTL

Stage VI Electric Models 4-YEAR		
EN8-40-DORT	EN8-50-DORT	EN8-55-DORT
EN8-40-DORS	EN8-50-DORS	EE8-50-DFRT
EEA8-40-DFRS	EE8-50-DFRS	EE8-55-DFRT
EE8-40-DFRT	EEA8-40-DFRT	
EEA8-40-DFRS	EEA8-50-DFRT	
EEA8-50-DFRS	EEA8-55-DFRT	

The 10-year warranty kits cannot be used with top T&P models on Stage I and Stage II kits. Side-loop and LP Gas model derivatives, for the above models are eligible for warranty extensions.

Stage VI Gas Models 4-YEAR		
GW8 40 BCT	GW8 50 BRT	GW8 50 BCS
GW8 50 RCT	GW8 55 XCT	GW8 50 RCUTL
GW8 40 BCUT	GW8 50 BCUT	GW8 40 BCUS
GW8 40 BRUT	GW8 50 BCT	
GW8 50 BRUT	GW8 40 BCS	

Stage VI Gas Models (4-YEAR)	
GS6-75-XRRS	GS6-75-URRS

Part Number	Description	Approx. Shipping Weight	List Price
100109796	Stage I (2-Year) Warranty Extension Kit	0.5	*
100109798	Stage I (4-Year) Alum Warranty Extension Kit	2	*
100356248	Stage I (4-year) Mag Warranty Extension Kit	2	*
100111229	Stage II (4-Year) Warranty Extension Kit	2	*
100286573	Stage VI (4-year) Warranty Extension, ProLine Master Family	0.5	*
100341550	Stage VII (4-year) Gas Large Capacity Kit	2	*

SELECT® GEOTHERMAL STORAGE TANKS

6-Year Limited Tank/6-Year Limited Parts Warranty

Model Number	Gallon Capacity	Element Wattage (240 Volt)	Recovery 90°F Rise Gallons Per Hour	Number of Elements	Dimensions in Inches		Load Factor	Approx. Shipping Weight (lbs)	Net Distributor Price
					Height	Diameter			
SGV-82-10TS	80	4500	21	1	63-1/4	24	1.39	204	\$1,480
SGV-120-10TS	119	4500	21	1	63-1/4	28	1.67	311	1,862

Recovery capacity is based on actual performance tests.

Configured with upper copper element. Lower element removed and replaced with a plug for the geomanufacturer's control to be installed.

PREMIER® INDIRECT SOLAR BOOSTER TANKS

6-Year Limited Tank/6-Year Limited Parts Warranty

- Single wall internal coil-type heat exchanger
- Suitable for closed loop active solar systems

Model Number	Gallon Capacity	Heat Exchanger Included Single Wall Internal Coil Type	Heating Elements (240 VAC Single Phase)	GPH Recovery @ 90°F Rise	Dimensions in Inches		Load Factor	Approx. Shipping Weight (lbs)	Net Distributor Price
					Height	Diameter			
SB6-80-SOTX	76	Yes	1 upper – 4500W	21	63-1/4	24	1.39	257	\$2,616
SB6-120-SOTX	108	Yes	1 upper – 4500W	21	63-1/4	28	1.67	365	3,782

PREMIER® DIRECT SOLAR BOOSTER TANKS

6-Year Tank/6-Year Limited Parts Warranty

- Suitable for open loop systems or closed loop systems using an external heat exchanger

Model Number	Gallon Capacity	Heat Exchanger Included Single Wall Internal Coil Type	Heating Elements (240 VAC Single Phase)	GPH Recovery @ 90°F Rise	Dimensions in Inches		Load Factor	Approx. Shipping Weight (lbs)	Net Distributor Price
					Height	Diameter			
SBV-65-10TS	65	No	1 upper – 4500W	21	59-1/4	20-1/2	1.04	152	\$1,406
SBV-82-10TS	80	No	1 upper – 4500W	21	63-1/4	24	1.39	204	1,478
SBV-120-10TS	119	No	1 upper – 4500W	21	63-1/4	28	1.67	311	1,862

RESIDENTIAL SOLAR EXTENDED WARRANTY

Extended Warranty Available for Residential Solar Tanks

4-Year Extended Solar Tank Warranty

These kits extend the warranty period for the SBV/SB6 style tanks from 6 years to 10 years

QUALIFYING MODELS

- SBV-65-10TS (Direct Solar Booster Tank)
- SBV-82-10TS (Direct Solar Booster Tank)
- SBV-120-10TS (Direct Solar Booster Tank)
- SB6-80-SOTX (Indirect Solar Booster Tank)
- SB6-120-SOTX (Indirect Solar Booster Tank)

Part Number	Description	Approx. Shipping Weight (lbs)	List Price
100112533	State Solar Tank 4-Year Extended Warranty. Eligible models: SBV 65 10TS, SBV 82 10TS, SBV 120 10TS, SB6 80 SOTX, SB6 120 SOTX. This kit contains instructions, an extension sticker and a certificate request form.	2	*

PROLINE® XE HIGH EFFICIENCY POWER VENT

6-Year Limited Tank/6-Year Limited Parts Warranty

- ENERGY STAR® Qualified
- 94% Thermal Efficiency
- Vents with PVC, CPVC, Polypropylene or ABS pipe
- Meets Texas Low-NOx requirements of less than 40 ng/J and other districts with same requirements.

Model Number	Nominal Capacity	Rated Storage Volume	UEF	Thermal Efficiency	Recovery @ 90°F Rise Gallon Per Hour	BTU Input Per Hour	Dimensions in Inches		Load Factor	Approx. Shipping Weight (lbs)	Net Distributor Price
							Height to Top of Heater	Diameter			
GP6-50-YTVIT	50	48	0.88	94%	92	76,000	70-5/8	21	1.39	210	\$2,777

Available in natural gas only.

Standard model certified for sea level to 5,300 ft. elevation. Order YTVITD for elevations to 10,100 ft.

Optional Condensate Neutralizer Kit available (Part Number 100112380).

PROLINE® XE POWER DIRECT VENT HIGH EFFICIENCY

6-Year Limited Tank/6-Year Limited Parts Warranty

- ENERGY STAR® Qualified
- 96% Thermal Efficiency
- Vents with PVC, CPVC, Polypropylene or ABS pipe
- Complies with SCAQMD Rule 1146.2 and other air quality management districts with similar requirements for Ultra-Low NOx emissions requirements of 14 ng/J or 20ppm.
- Optional powered anode available for long-lasting tank protection

Model Number	Nominal Capacity	Rated Storage Volume	UEF	Thermal Efficiency	Recovery @ 90°F Rise Gallon Per Hour	BTU Input Per Hour	Vent Size	Dimensions in Inches		Load Factor	Approx. Shipping Weight (lbs)	Net Distributor Price
								Height to Top of Heater	Diameter			
GP6-50-YTPDT	50	49	0.88	96%	129	100,000	2 or 3	66-3/4	22	1.39	255	\$3,647
GP6-75-YTPDT	75	74	0.86	96%	129	100,000	2 or 3	64-3/4	27-3/4	2.94	382	4,430

When ordering propane gas, add \$40 to the price of each unit and change "Y" to "H" in the model number (example: GP6 50 HTPDT).

Optional Condensate Neutralization Kits available (Part Number 100112380).

Models certified from sea level to 10,100 feet elevation.

Optional Powered Anode available. Specify when ordering and add \$75 to the price of each unit.

PROLINE® XE NON-CONDENSING FLUE DAMPER

6-Year Limited Tank/6-Year Limited Parts Warranty

Model Number	Nominal Capacity	Rated Storage Volume	UEF	Recovery @ 90°F Rise Gallon Per Hour	BTU Input Per Hour	Dimensions in Inches			Load Factor	Approx. Shipping Weight (lbs)	Net Distributor Price
						Height	Diameter	Draft Hood			
TALL MODELS											
GS6-40-YBFT	40	38	0.64	42	40,000	64-1/4	20	3 or 4	1.04	152	\$1,014
GS6-50-YBFT	50	48	0.69	42	40,000	63-1/2	22	3 or 4	1.19	167	1,080
SHORT MODELS											
GS6-40-YBFS	40	38	0.66	42	40,000	54	22	3 or 4	0.66	149	1,002
*GS6-50-YBFS	50	49	0.69	42	40,000	55-3/4	24	3 or 4	0.78	175	1,080

Requires 120 VAC power supply.

Water connection is 3/4" on all models.

When ordering top-mounted T&P Valve, add "G" to model number (example: GS6 40 YBFT G).

All models are certified from sea level to 10,100 ft. elevation.

*GS6 50 YBFS available in natural gas only, all other models available in propane (LP) gas. Add \$40.

PROLINE® XE NON-CONDENSING ULTRA-LOW NO_x POWER DIRECT VENT

6-Year Limited Tank/6-Year Limited Parts Warranty

- Flammable Vapor Ignition Resistant
- Complies with SCAQMD Rule 1121 and other air quality management districts with Similar requirements for NO_x emissions of less than 10 ng/J.

Model Number	Nominal Capacity	Rated Storage Capacity	UEF	BTU Input Natural & Propane Gas	Recovery @ 90°F Rise Gallon Per Hour	Dimensions in Inches				Load Factor	Approx. Shipping Weight (lbs)	Net Distributor Price
						Height to Top of Vent	Diameter	Height to Top of Heater	Vent Diameter			
GS6-40-UBPDS	40	38	0.70	40,000	41	58 1/4	22	49 5/8	2" or 3"	1.25	174	\$2,493
GS6-50-UBPDT	50	48	0.70	40,000	43	67 1/2	22	58 3/4	2" or 3"	1.28	192	2,571

All models rated for installation up to 5,400 ft elevation. Use high altitude kit for elevations up to 10,100 ft.
 For installations where the ambient temperature is between 110 degrees & 140 degrees use of the high ambient kit is required.
 See specification sheet for the high altitude & high ambient kit part numbers.
 No option for top T&P valve.

PROLINE® XE NON-POWERED DAMPER

6-Year Limited Tank/6-Year Limited Parts Warranty

- Flammable Vapor Ignition Resistant
- No Power is required

Model Number	Nominal Capacity	Rated Storage Capacity	UEF	BTU Input Natural & Propane Gas	Recovery @ 90°F Rise Gallon Per Hour	Dimensions in Inches				Load Factor	Approx. Shipping Weight (lbs)	Net Distributor Price
						Height to Top of Vent	Diameter	Height to Top of Heater	Vent Diameter			
GS6-40-BDHT	40	38	0.68	40,000	40	62 1/2	20	58 7/8	3" or 4"	1.14	140	\$854
GS6-50-BDHT	50	48	0.68	40,000	40	61 1/4	22	57 5/8	3" or 4"	1.19	160	882

All models rated for installation up to 10,100 ft elevation.
 Available in natural gas only.
 Water connections are 3/4" on all models.
 No option for top T&P valve.

PROLINE® XE NON-CONDENSING ULTRA-LOW NO_x FLUE DAMPER

6-Year Limited Tank/6-Year Limited Parts Warranty

- Complies with SCAQMD Rule 1121 and other air quality management districts with similar requirements for NO_x emissions less than 10ng/J.

Model Number	Nominal Capacity	Rated Storage Volume	UEF	BTU Input Natural Gas	Recovery @ 90°F Rise (Gallon/Hour)	Dimensions in Inches			Load Factor	Approx. Shipping Weight	Net Distributor Price
						Height	Diameter	Draft Hood			
GS6-40-BFUT	40	38	0.65	40,000	42	64-1/4	20	3 or 4	1.1	152	\$1,064
GS6-50-BFUT	50	48	0.70	40,000	42	63-1/2	22	3 or 4	1.19	167	1,071

Requires 120VAC power supply located within 19ft of the heater.
 Water connection is 3/4" on all models.
 Standard top T&P, specify when ordering side T&P.
 All models are certified from sea level to 7,600ft elevation.

PROLINE® XE POWER VENT

6-Year Limited Tank/6-Year Limited Parts Warranty

- Vents with PVC, CPVC, Polypropylene or ABS pipe
- Flammable Vapor Ignition Resistant

Model Number	Nominal Capacity	Rated Storage Volume	UEF	Recovery @ 90°F Rise Gallon Per Hour	BTU Input Per Hour Natural Gas	Dimensions in Inches			Load Factor	Approx. Shipping Weight (lbs)	Net Distributor Price
						Height to Top of Blower	Diameter	Vent Diameter			
GS6-40-YBVIS	40	38	0.67	45	40,000	59	22	2, 3 or 4	0.71	174	\$2,031
GS6-40-YRVIT	40	38	0.70	56	50,000	68-1/2	20	2, 3 or 4	1.15	176	2,048
GS6-50-YBVIS	50	49	0.72	45	40,000	60-1/8	24	2, 3 or 4	1.82	198	2,075
GS6-50-YRVIT	50	48	0.72	56	50,000	68-1/8	22	2, 3 or 4	1.67	192	2,077
GS6-50-YRVHSL	50	50	0.73	69	62,000	61-1/8	24	3 or 4	1.79	212	2,477
GS6-75-YRVHTL	75	72	0.69	80	76,000	70-5/8	26	3 or 4	1.96	277	2,901

When ordering propane gas, add \$40.00 to the price of each unit and change "Y" to "H" in the model number (example: GS6 40 HBVIS).

Models GS6 50 YRVHSL5 and GS6 75 YRVHTL come from the factory standard with side loop fittings.

All models have 3/4" NPT male water connections.

YRVIT models available with side connections for use in combination applications. Add "L" to the model number (example: GS6 40 YRVITL).

All models are certified from sea level to 10,100 ft. elevation.

No option available for top T&P.

PROLINE® XE POWER DIRECT VENT SIDEWALL/ROOF VENT

6-Year Limited Tank/6-Year Limited Parts Warranty

- Vents with PVC, CPVC or ABS pipe
- Flammable Vapor Ignition Resistant

Model Number	Nominal Capacity	Rated Storage Volume	UEF	Recovery @ 90 F Rise Gallon Per Hour	BTU Input Natural Gas	BTU Input Propane Gas	Dimensions in Inches				Load Factor	Approx. Shipping Weight (lbs)	Net Distributor Price
							Height to Top of Vent	Diameter	Height to Top of Heater	Vent Diameter			
GS6-40-YBPDS	40	38	0.68	45	40,000	40,000	58-1/4	22	49-1/2	2, 3 or 4	1.00	174	\$2,226
GS6-50-YBPDT	50	48	0.72	50	45,000	45,000	67-1/2	22	58-3/4	2, 3 or 4	1.00	192	2,307
GS6-50-YRPDTL-5	50	48	0.73	73	62,000**	58,000	69	22	60-1/4	3 or 4	1.00	200	2,673
GS6-75-YRPDTL	75	72	0.68	82	76,000	76,000	70-5/8	26	61-1/2	3 or 4	1.25	277	3,258

**Propane model has input of 58,000 BTU/hr.

When ordering propane, change "Y" to "H" in model number (example: GS6 50 HBPDT) and add \$40.00. All models are certified from sea level to 10,100 feet elevation.

Side connections standard on YRPDTL 5 models.

Side connections available on YBPDS and YBPDT models. Add \$10 to price.

PROLINE® XE ULTRA-LOW NO_x POWER VENT

6-Year Limited Tank/6-Year Limited Parts Warranty

- Flammable Vapor Ignition Resistant
- Complies with SCAQMD Rule 1121 and other air quality management districts with similar requirements for NO_x emissions of less than 10 ng/J

Model Number	Nominal Capacity	Rated Storage Volume	UEF	Recovery @ 90°F Rise Gallon Per Hour	Input BTU Per Hour Natural Gas	Dimensions in Inches					Load Factor	Approx. Shipping Weight (lbs)	Net Distributor Price
						Height to Top of Vent	Height to Top of Heater	Height to T&P	Diameter	Vent Outlet			
GS6-40-UBVIT	40	38	0.70	42	42,000	66-7/8	58-5/8	51-1/2	20	2 or 3	1.15	170	\$1,393
GS6-50-UBVIT	50	48	0.65	42	42,000	65-5/8	57-7/16	51	22	2 or 3	1.35	207	1,686

No option available for top T&P valve.

PROLINE® MASTER ULTRA-LOW NOx

8-Year Limited Tank/8-Year Limited Parts Warranty

- Complies with SCAQMD Rule 1121 and other air quality management districts with similar requirements for NOx emissions of less than 10 ng/J
- Flammable Vapor Ignition Resistant

Model Number	Nominal Capacity	Rated Storage Volume	UEF	Recovery @ 90°F Rise Gallon Per Hour	BTU Input Per Hour Natural Gas	Dimensions in Inches			Load Factor	Approx. Shipping Weight (lbs)	Net Distributor Price
						Height	Diameter	Draft Hood			
TALL MODELS											
GW8-40-BRUT	40	38	0.64	41	40,000	62	18	3 or 4	0.46	125	\$933
GW8-40-BCUT	40	38	0.64	41	40,000	62	20	3 or 4	0.86	125	933
GW8-50-BRUT	50	48	0.61	42	40,000	60-3/4	20	3 or 4	0.58	148	986
GW8-50-BCUT	50	48	0.64	42	40,000	60-3/4	22	3 or 4	0.61	148	986
GW8-50-RCUTL*	50	48	0.60	51	50,000	61	22	4	1.10	177	1,273
SHORT MODELS											
GW8-40-BCUS	40	38	0.57	41	40,000	51-1/2	22	3 or 4	0.52	138	933

All models may be ordered from the factory with top T&P.

*Side loop connections are standard on model GW8 50 RCUTL.

Most models approved for installation from sea level to 7,700 ft. elevation. The exemption is model GW8 50 RCUTL which is approved for 5,400 ft. elevation.

PROLINE® MASTER ATMOSPHERIC VENT

8-Year Limited Tank/8-Year Limited Parts Warranty

Model Number	Nominal Gallon Capacity	Rated Storage Volume	UEF	Recovery @ 90°F Rise Gallon Per Hour	BTU Input Per Hour Natural Gas	Dimensions in Inches			Load Factor	Approx. Shipping Weight (lbs)	Net Distributor Price
						Height	Diameter	Draft Hood			
TALL MODELS											
GW8-40-BCT	40	38	0.64	42	40,000	61-3/4	20	3 or 4	0.86	138	\$795
GW8-50-BRT	50	48	0.62	41	40,000	60-3/4	21	3 or 4	0.61	148	929
GW8-50-BCT	50	48	0.62	43	40,000	60-3/4	22	3 or 4	0.86	165	950
GW8-50-RCT*	50	48	0.61	54	50,000	60-3/4	22	4	0.58	165	1,542
GW8-55-XCT*	55	55	0.62	65	60,000	59-3/4	24	4	0.78	185	1,637
SHORT MODELS											
GW8-40-BCS	40	38	0.59	41	40,000	51-1/2	22	3 or 4	0.52	135	795
GW8-50-BCS	50	50	0.62	43	40,000	53-1/4	24	3 or 4	0.69	177	1,115

Water connection is 3/4" on all models.

Specify when ordering propane (LP) gas and add \$40.00 to the price of each unit.

*For optional side-mounted recirculating taps, add "L" to the suffix (example: GW8 50 RCTL). Add \$10.

All models approved for installation from sea level to 10,100 ft. elevation.

PROLINE® ULTRA-LOW NO_x DIRECT VENT

6-Year Limited Tank/6-Year Limited Parts Warranty

- Flammable Vapor Ignition Resistant
- Complies with SCAQMD Rule 1121 and other air quality management districts with similar requirements for NO_x emissions of less than 10 ng/J

Model Number	Nominal Capacity	Rated Storage Volume	UEF	Recovery 90°F Rise Gallon Per Hour	Input BTU Gallon Per Hour Natural Gas	Dimensions in Inches			Load Factor	Approx. Shipping Weight (lbs)	Net Distributor Price
						Height	*Diameter	Vent Outlet			
GS6-40-UBDS-L	40	28	0.60	39	36,000	65-1/4	22	3 and 5	0.93	179	1,812
GS6-50-UBDT-L	50	48	0.65	41	38,000	73-1/2	22	3 and 5	1.67	193	1,867

No option available for top T&P valve.

All model have 3/4" top water connections and come standard with side loop fittings.

All models are certified from sea level to 7,700 ft. elevations.

PROLINE® DIRECT VENT SIDEWALL VENT

6-Year Limited Tank/6-Year Limited Parts Warranty

- Flammable Vapor Ignition Resistant

Model Number	Nominal Capacity	Rated Storage Volume	UEF	Recovery 90°F Rise Gallon Per Hour	Input BTU Gallon Per Hour Natural Gas	Dimensions in Inches			Load Factor	Approx. Shipping Weight (lbs)	Net Distributor Price
						Height	*Diameter	Vent Outlet			
GS6-40-YBDS	40	39	0.60	41	38,000	64	22	Co-Axial	1.28	178	\$2,062
GS6-50-YBDS	50	48	0.66	43	40,000	73	22	Co-Axial	1.28	200	2,138
GS6-50-YRDS	50	48	0.65	51	47,000	74	22	Co-Axial	1.28	215	2,001

*Allow 29-1/2" front to back dimension for air intake at rear of heater.

Specify when ordering propane (LP) gas and add \$40 to the price.

No option for top T&P.

All models certified from sea level to 7,700 ft. elevation.

All models are available with side-loop fittings, add "L" to the suffix (example: GS6 50 YRDSL). Add \$10.

PROLINE® ATMOSPHERIC VENT

6-Year Limited Tank/6-Year Limited Parts Warranty

Model Number	Nominal Gallon Capacity	Rated Storage Volume	UEF	Recovery @ 90°F Rise Gallon Per Hour	BTU Input Per Hour Natural Gas	Dimensions in Inches			Load Factor	Approx. Shipping Weight (lbs)	Net Distributor Price
						Height	Diameter	Draft Hood			
TALL MODELS											
†GS6-30-ORBTR	30	29	0.60	32	32,000	60-1/2	16	3 or 4	0.69	123	\$927
GS6-30-OCTR	30	29	0.60	31	32,000	60-1/2	18	3 or 4	0.72	132	901
‡GS6-40-OCT	40	38	0.61	38	35,500	61-3/4	20	3 or 4	0.86	138	735
†GS6-40-BRBT	40	38	0.65	42	40,000	61-3/4	18	3 or 4	0.86	130	761
GS6-40-BCT*	40	38	0.64	42	40,000	61-3/4	20	3 or 4	0.86	138	735
GS6-50-BRT*	50	48	0.62	41	40,000	60-3/4	21	3 or 4	0.56	148	869
GS6-50-BCT*	50	48	0.62	43	40,000	60-3/4	22	3 or 4	0.58	165	890
GS6-50-RCT*	50	48	0.61	54	50,000	60-3/4	22	4	0.58	165	1,482
†GS6-50-XCT*	50	49	0.61	65	60,000	65-1/2	22	4	1.19	190	1,604
GS6-55-XCT*	55	55	0.62	65	60,000	59-3/4	24	4	0.78	185	1,577
SHORT MODELS											
†GS6-30-ORBSR	30	29	0.60	32	32,000	50 1/4	18	3 or 4	0.39	114	905
GS6-30-OCSR	30	29	0.60	32	32,000	50 1/4	20	3 or 4	0.43	108	879
†GS6-40-BRBS	40	38	0.57	41	40,000	51-1/2	20	3 or 4	0.53	134	761
GS6-40-BCS	40	38	0.59	41	40,000	51-1/2	22	3 or 4	0.52	135	735
GS6-50-BCS	50	50	0.62	43	40,000	53-1/4	24	3 or 4	0.69	177	1,055

Water connection is 3/4" on all models.

†Models ship with supplied insulation blanket.

For 10-year tank and 10-year parts limited warranty, change "6" to "X" in model number (example: GSX 30 OCTR). Add \$100.

Specify when ordering propane (LP) gas and add \$40.00 to the price of each unit.

‡LP models not available on GS6 40 OCT.

*For optional side-mounted recirculating taps, add "L" to the suffix (example: GS6 50 RCTL). Add \$10.

All models are certified from sea level to 10,100 ft. elevation.

PROLINE® ATMOSPHERIC VENT HIGH CAPACITY

6-Year Limited Tank/6-Year Limited Parts Warranty

Model Number	Nominal Capacity	Rated Storage Volume	UEF	Recovery @ 90°F Rise Gallon Per Hour	BTU Input Per Hour Natural Gas	Dimensions in Inches			Load Factor	Approx. Shipping Weight (lbs)	Net Distributor Price
						Height	Diameter	Draft Hood			
GS6-75-XRRS	74	71	0.60	81	75,100	61	26-1/2	4	1.59	270	\$1,638
GS6-100-XRRT	98	95	0.58	81	75,100	68-1/2	27-3/4	4	1.82	340	3,309

Water connections are 1" male NPT on the GS6 75 XRRS and 1 1/4" on the GS6 100 XRRT.

For 10-year tank & 10 year parts limited warranty, change 6 to X in the model number, example GSX 75 XRRS. Add \$100.

For optional side loop fittings add L to suffix of model number, example GS6 75 XRRSL. Add \$10. 75 gallon model only.

When ordering propane (LP) gas and add \$40 to the price and change "X" to "C" in the model number (example GS6 75 CRRS).

All models certified from sea level to 7,700 ft. elevation.

PROLINE® ULTRA-LOW NOx

6-Year Limited Tank/6-Year Limited Parts Warranty

- Complies with SCAQMD Rule 1121 and other air quality management districts with similar requirements for NOx emissions of less than 10 ng/J
- Flammable Vapor Ignition Resistant

Model Number	Nominal Capacity	Rated Storage Volume	UEF	Recovery @ 90°F Rise Gallon Per Hour	BTU Input Per Hour Natural Gas	Dimensions in Inches			Load Factor	Approx. Shipping Weight (lbs)	Net Distributor Price
						Height	Diameter	Draft Hood			
TALL MODELS											
GS6-30-ORUT	30	29	0.59	34	33,000	61-3/4	16	3 or 4	0.69	126	\$881
GS6-40-BRUT	40	38	0.64	41	40,000	62	18	3 or 4	0.46	125	873
GS6-40-BCUT	40	38	0.64	41	40,000	62	20	3 or 4	0.86	125	873
GS6-50-BRUT	50	48	0.61	42	40,000	60-3/4	20	3 or 4	0.58	148	926
GS6-50-BCUT	50	48	0.64	42	40,000	60-3/4	22	3 or 4	0.58	148	926
GS6-50-RCUT*	50	48	0.60	51	50,000	61	22	4	1.10	177	1,213
SHORT MODELS											
GS6-40-BCUS	40	38	0.57	41	40,000	51-1/2	22	3 or 4	0.52	138	873

All models may be ordered from the factory with Top T&P valve as an option by adding suffix "G" to the model number (example: GS6 30 ORUTG).

*Side loop connections are standard on model GS6 50 RCUT.

Most models approved for installation from sea level to 7,700 ft. elevation. The exemption is model GS6 50 RCUT which is approved for 5,400 ft. elevation.

For 10-year tank and 10-year parts limited warranty, change "6" to "X" in the model number (example: GSX 50 BCUT). Add \$155.

PROLINE® ULTRA-LOW NOx HIGH CAPACITY

6-Year Limited Tank/6-Year Limited Parts Warranty

- Complies with SCAQMD Rule 1146.2 and other air quality management districts with similar requirements for NOx emissions of less than 14 ng/J
- No 120V power source required

Model Number	Nominal Capacity	Rated Storage Volume	UEF	Recovery at 90°F Rise Gallon Per Hour	BTU Input Per Hour	Dimensions in Inches			Load Factor	Approx. Shipping Weight (lbs)	Net Distributor Price
						Height	Diameter	Draft Hood			
†GS6-75-URRS**	74	71	0.64	81	75,100	62-1/16	25-1/4	4	1.59	285 lbs	\$1,659
GS6-100-URRT*	98	95	0.58	82	75,100	70-1/2	27-3/4	4	1.75	350 lbs	3,176

† Standard model is factory supplied with side tap connections for optional hydronic heating loop applications.

All models certified from sea level to 7,700 ft. elevation.

*Recover rating based on 81% thermal efficiency.

**Recover rating based on 80% thermal efficiency.

POLARIS® HIGH EFFICIENCY RESIDENTIAL

10-Year Limited Tank/10-Year Limited Parts Warranty

- Up to 96% Thermal Efficiency
- Vents with PVC, CPVC, or Polypropylene Pipe
- Modulating Burner
- Complies with SCAQMD rule 1146.2 and other air quality management districts with similar requirements for NOx emissions of less than 14 ng/J.

Model Number	Nominal Capacity	Rated Storage Volume	UEF	Thermal Efficiency	Recovery @ 90°F Rise Gallon Per Hour	BTU Input Per Hour	Vent Size	Dimensions in Inches			Load Factor	Approx. Shipping Weight (lbs)	Net Distributor Price
								Height to Top of Heater	Height to T&P	Diameter			
GHX-34-100-N	34	33	0.90	96%	129	100	2 or 3	48-1/2	41	22	0.69	150	\$3,847
GHX-34-130-N	34	N/A	N/A	96%	165	130	2 or 3	48-1/2	41	22	0.69	150	4,324
GHX-34-150-N	34	N/A	N/A	94%	190	150	2 or 3	48-1/2	41	22	0.69	150	4,658
GHX-50-130-N	50	N/A	N/A	95%	165	130	2 or 3	62-3/8	55	22	1.39	176	4,769
GHX-50-150-N	50	N/A	N/A	95%	190	150	2 or 3	63-3/4	56-1/4	22	1.39	180	5,078
GHX-50-175-N	50	N/A	N/A	96%	222	175	3	63-3/4	56-1/4	22	1.39	180	5,409
GHX-50-199-N	50	N/A	N/A	96%	253	199	3	63-3/4	56-1/4	22	1.39	180	5,760

For propane gas (LP) on Polaris® models, change "N" suffix to "P" suffix in the model number and add \$75/unit.

Optional 2" Concentric Vent (part 100093946) and 3" Concentric Vent (part 100111100) kits available.

PROLINE® MANUFACTURED HOUSING

6-Year Limited Tank/6-Year Limited Parts Warranty

- Meets HUD requirements for manufactured housing installations.
- Equipped with convertible gas control for natural or propane gas.

Model Number	Nominal Capacity	Rated Storage Volume	UEF	Recovery @ 90°F Rise Gallon Per Hour	BTU Input Per Hour Natural Gas	BTU Input Per Hour Propane Gas	Dimensions in Inches			Load Factor	Approx. Shipping Weight (lbs)	Net Distributor Price
							Height	Diameter	Draft Hood			
ATMOSPHERIC VENT MODELS												
GSG-30-MHG	30	29	0.61	36	35,500	32,000	61-1/2	18	3 or 4	0.46	129	\$695
GSG-40-MHG	40	38	0.58	36	35,500	32,000	61-3/4	20	3 or 4	1.04	153	734
DIRECT VENT MODELS- INCLUDE AIR INTAKE (THE VENT KITS BELOW MUST BE USED TO INSTALL THE WATER HEATER)												
GSG-30-MDV	30	29	0.61	31	30,000	29,000	61	18	3	0.78	129	823
GSG-40-MDV	40	38	0.59	33	32,000	29,000	61-3/4	20	3	1.04	153	927
GSG-50-MDV	50	47	0.56	39	40,000	37,000	60	22	3	1.10	168	1,028

All models ship from factory to operate for use with natural gas. A complete propane (LP) burner is supplied for field converting to propane gas.

Direct vent models are certified from sea level to 5,400 ft. elevation.

Atmospheric vent models are certified from sea level to 10,100 ft. elevation.

No option available for top T&P.

See below for available roof jack kits.

MANUFACTURED HOUSING ROOF JACK KITS

(FOR ORDERING INFORMATION CALL THE SERVICE PARTS DEPARTMENT AT 800-821-2017)

Part Number	Description	Approx. Shipping Weight (lbs)	List Price
100285331	12" (Non-Adjustable)	10	*
100285333	32" (18" - 32" Adjustable)	13	*
100285412	60" (32" - 60" Adjustable)	22	*
100285414	95" (36" - 95" Adjustable)	27	*

Roof Jack Kits must be ordered separately with 30, 40 and 50-gallon Direct Vent models and must be in accordance with instructions furnished with the heater.

No other Roof Jack Kits are approved for installation with this heater.

PROLINE® XE NON-CONDENSING CONCENTRIC VENT

15-Year Limited Heat Exchanger/5-Year Limited Parts Warranty

- Power Direct Vent Design Using APNC35 Concentric Vent System
- Field Convertible from Natural Gas to Propane
- Complies with SCAQMD Rule 1146.2 and other air quality management districts with similar requirements for NOx emissions of less than 14 ng/J or 20 ppm

Model Number*	Type	Gas Consumption Input		UEF	Hot Water Output (GPM)			Load Factor	Approx. Shipping Weight (lbs)	Net Distributor Price
		Minimum BTU/H	Maximum BTU/H		Maximum**	45°F Rise	70°F Rise			
GTS-310C-NI	Indoor	15,000	190,000	0.81	8.0	6.9	4.4	0.13	55	1,579
GTS-510C-NI***	Indoor	15,000	199,000	0.81	10.0	7.2	4.7	0.13	55	1,838

*Configured for natural gas out of the box. Field convertible to Propane with supplied conversion kit.

**Current numbers based on factory testing; 0.5 gpm required for activation; 0.4 gpm required for continuous fire after initial ignition.

***Suitable for commercial applications.

CONCENTRIC VENTING COMPONENTS

Part Number	Description	List Price
100322374	11.5" Standard Sidewall Kit	*
100322375	21" Standard Sidewall Kit	*
100305170	18" Roof termination	*
100266118	38" Roof termination	*
100266119	45 degree elbow	*
100266132	90 degree elbow	*
100266133	10" Straight pipe	*
100266134	19.5" Straight pipe	*
100266135	39" Straight pipe	*
100266187	Flat roof flashing	*
100266136	Tile/Shingle roof flashing 1/12 to 6/12 pitch	*
100266137	Tile/Shingle roof flashing 8/12 to 16/12 pitch	*
100266138	Tile/Shingle roof flashing 6/12 to 12/12 pitch	*
100266139	Condensate trap	*
100266140	Condensate collector	*
100266141	Pipe hangers	*

PROLINE® XE ULTRA-LOW NOx NON-CONDENSING

15-Year Limited Heat Exchanger/5-Year Limited Parts Warranty

- Power Vent Design Using Category III Stainless Steel Venting
- Field Convertible from Natural Gas to Propane
- Complies with SCAQMD Rule 1146.2 and other air quality management districts with similar requirements for NOx emissions of less than 14 ng/J or 20 ppm

Model Number*	Type	Gas Consumption Input		UEF	Hot Water Output (GPM)			Load Factor	Approx. Shipping Weight (lbs)	Net Distributor Price
		Minimum BTU/H	Maximum BTU/H		Maximum**	45°F Rise	70°F Rise			
GTS-110U-I 200	Indoor	15,000	140,000	0.81	6.6	5.1	3.3	0.10	39	\$1,088
GTS-110U-E 200	Outdoor	15,000	140,000	0.81	6.6	5.1	3.3	0.10	39	1,008
GTS-310U-I 200	Indoor	15,000	190,000	0.81	8.0	6.9	4.4	0.10	39	1,416
GTS-310U-E 200	Outdoor	15,000	190,000	0.81	8.0	6.9	4.4	0.10	39	1,416
GTS-510U-I 200***	Indoor	15,000	199,000	0.81	10.0	7.2	4.7	0.10	40	1,686
GTS-510U-E 200***	Outdoor	15,000	199,000	0.81	10.0	7.2	4.7	0.10	40	1,686

*Configured for natural gas out of the box. Field convertible to Propane with supplied conversion kit.

**Current numbers based on factory testing; 0.5 GPM required for activation; 0.4 GPM required for continuous fire after initial ignition.

***Suitable for commercial applications.

ADAPT™ PROLINE XE PREMIUM CONDENSING WITH X3® SCALE PREVENTION TECHNOLOGY & INTEGRATED RECIRCULATION PUMP

15-Year Limited Heat Exchanger/5-Year Limited Parts Warranty

- X3® Scale Prevention Technology will prevent build-up - meaning no scale-related maintenance
- All Models are ENERGY STAR® Certified
- Complies with SCAQMD Rule 1146.2 and other air quality management districts with similar requirements for NOx emissions less than 14 ng/J or 20 ppm

Model Number	Type	Gas Consumption Input		UEF	Hot Water Output (GPM)			Load Factor	Approx Shipping Weight (lbs)	List Price
		Minimum BTU	Maximum BTU		Maximum*	45°F Rise	70°F Rise			
X3® TECHNOLOGY MODELS										
STHR-160X3	Indoor / Outdoor	9,000	160,000	0.95	10.5	6.8	4.3	0.33	120	\$2,073.00
STHR-180X3	Indoor / Outdoor	9,000	180,000	0.95	10.5	7.7	4.8	0.33	120	\$2,284.00
STHR-199X3	Indoor / Outdoor	9,000	199,000	0.95	10.5	9.5	5.4	0.33	120	\$2,504.00
BYPASS MODELS										
STHR-160M	Indoor / Outdoor	9,000	160,000	0.95	10.5	6.8	4.3	0.33	120	\$1,871.00
STHR-180M	Indoor / Outdoor	9,000	180,000	0.95	10.5	7.7	4.8	0.33	120	\$2,081.00
STHR-199M	Indoor / Outdoor	9,000	199,000	0.95	10.5	9.5	5.4	0.33	120	\$2,301.00

*Current numbers based on factory testing; 0.5 GPM required for activation; 0.4 GPM required for continuous fire after initial ignition.

PROLINE® XE CONDENSING WITH X3® SCALE PREVENTION TECHNOLOGY

15-Year Limited Heat Exchanger/5-Year Limited Parts Warranty

- X3 Scale Prevention Technology will prevent Scale built up - meaning virtually zero maintenance
- ENERGY STAR® Qualified**
- Complies with SCAQMD Rule 1146.2 and other air quality management districts with similar requirements for NOx emissions less than 14 ng/J or 20 ppm

Model Number	Type	Gas Consumption Input		UEF	Hot Water Output (GPM)			Load Factor	Approx Shipping Weight (lbs)	List Price
		Minimum BTU	Maximum BTU		Maximum*	45°F Rise	70°F Rise			
INDOOR MODELS										
GTS-240X3-NIH	Indoor	15,000	160,000	0.94	6.6	6.6	4.3	0.21	72	\$1,811
GTS-240X3-PIH	Indoor	13,000	160,000	0.94	6.6	6.6	4.3	0.21	72	1,811
GTS-340X3-NIH**	Indoor	15,000	180,000	0.95	8	7.6	4.9	0.21	72	1,988
GTS-340X3-PIH**	Indoor	13,000	180,000	0.95	8	7.6	4.9	0.21	72	1,988
GTS-540X3-NIH	Indoor	15,000	199,000	0.93	10	8.4	5.4	0.21	73	2,175
GTS-540X3-PIH	Indoor	13,000	199,000	0.93	10	8.4	5.4	0.21	73	2,175
OUTDOOR MODELS										
GTS-240X3-NEH**	Outdoor	15,000	160,000	0.95	6.6	6.6	4.3	0.21	71	1,811
GTS-240X3-PEH**	Outdoor	13,000	160,000	0.95	6.6	6.6	4.3	0.21	71	1,811
GTS-340X3-NEH	Outdoor	15,000	180,000	0.94	8	7.6	4.9	0.21	71	1,988
GTS-340X3-PEH	Outdoor	13,000	180,000	0.94	8	7.6	4.9	0.21	71	1,988
GTS-540X3-NEH**	Outdoor	15,000	199,000	0.95	10	8.4	5.4	0.21	73	2,175
GTS-540X3-PEH**	Outdoor	13,000	199,000	0.95	10	8.4	5.4	0.21	73	2,175

*Current numbers based on factory testing; 0.5 GPM required for activation; 0.4 GPM required for continuous fire after initial ignition.

**ENERGY STAR® Qualified

PROLINE® XE TANKLESS NON-CONDENSING WITH X3® SCALE PREVENTION TECHNOLOGY

15-Year Limited Heat Exchanger/5-Year Limited Parts Warranty

- X3 Scale Prevention Technology will prevent scale build up – meaning virtually zero maintenance
- Power Direct Vent Design Using APNC35 Concentric Vent System
- Field Convertible from Natural Gas to Propane
- Complies with SCAQMD Rule 1146.2 and other air quality management districts with similar requirements for NOx emissions of less than 14 ng/J or 20 ppm

Model Number	Type	Gas Consumption Input		UEF	Hot Water Output (GPM)			Load Factor	Approx. Shipping Weight (lbs)	List Price
		Minimum BTU	Maximum BTU		Maximum*	45°F Rise	70°F Rise			
GTS-310CX3	Indoor	15,000	190,000	0.81	8	6.9	4.4	0.13	63	\$1,698
GTS-510CX3	Indoor	15,000	199,000	0.81	10	7.2	4.7	0.13	63	\$1,958

*Configured for natural gas out of the box. Field convertible to Propane with supplied conversion kit.

**Current Numbers based on factory testing; 0.5 gpm required for activation; 0.4 gpm required for continuous fire after initial ignition.

PROLINE® XE CONDENSING WITH RECIRCULATION PUMP

15-Year Limited Heat Exchanger/5-Year Limited Parts Warranty

- ENERGY STAR® Qualified***
- Power Vent Design vents in PVC, CPCV or ABS (intake and exhaust solid core only)
- Complies with SCAQMD Rule 1146.2 and other air quality management districts with similar requirements for NOx emissions of less than 14 ng/J or 20 ppm

Model Number*	Type	Gas Consumption Input		UEF	Hot Water Output (GPM)			Load Factor	Approx. Shipping Weight (lbs)	List Price
		Minimum BTU/H‡	Maximum BTU/H		Maximum**	45°F Rise	70°F Rise			
GTS-540P-NIH	Indoor	15,000	199,000	0.93	10.0	8.4	5.4	0.19	71	\$2,392
GTS-540P-NEH***	Outdoor	15,000	199,000	0.95	10.0	8.4	5.4	0.19	70	2,392

*For propane, change the N to P in the model number when ordering. Example: GTS-540P-PIH.

**Current numbers based on factory testing; 0.5 GPM required for activation; 0.4 GPM required for continuous fire after initial ignition.

‡Propane (LP) Gas BTU/H is 13,000.

***ENERGY STAR® Qualified

PROLINE® XE ULTRA-LOW NOx CONDENSING HIGH EFFICIENCY

15-Year Limited Heat Exchanger/5-Year Limited Parts Warranty

- ENERGY STAR® Qualified+
- Power Vent Design vents in PVC, CPCV or ABS (intake and exhaust solid core only)
- Complies with SCAQMD Rule 1146.2 and other air quality management districts with similar requirements for NOx emissions of less than 14 ng/J or 20 ppm

Model Number*	Type	Gas Consumption Input		UEF	Hot Water Output (GPM)			Load Factor	Approx. Shipping Weight (lbs)	Net Distributor Price
		Minimum BTU/H‡	Maximum BTU/H		Maximum**	45°F Rise	70°F Rise			
GTS-140-NIH	Indoor	15,000	120,000	0.90	6.6	5	3.2	0.12	53	\$1,246
GTS-140-NEH	Outdoor	15,000	120,000	0.91	6.6	5	3.2	0.12	52	1,246
GTS-240-NIH	Indoor	15,000	160,000	0.94	6.6	6.6	4.3	0.19	71	1,508
GTS-240-NEH+	Outdoor	15,000	160,000	0.95	6.6	6.6	4.3	0.19	69	1,508
GTS-340-NIH+	Indoor	15,000	180,000	0.95	8.0	7.6	4.9	0.19	71	1,684
GTS-340-NEH	Outdoor	15,000	180,000	0.94	8.0	7.6	4.9	0.19	69	1,684
GTS-540-NIH***	Indoor	15,000	199,000	0.93	10.0	8.4	5.4	0.19	71	1,874
GTS-540-NEH***+	Outdoor	15,000	199,000	0.95	10.0	8.4	5.4	0.19	69	1,874

*For propane, change the "N" to "P" in the model number when ordering (example: GTS-540-PIH).

**Current numbers based on factory testing; 0.5 GPM required for activation; 0.4 GPM required for continuous fire after initial ignition.

***Suitable for commercial applications.

‡Propane (LP) Gas BTU/H is 13,000.

+ENERGY STAR® Qualified

TANKLESS ACCESSORIES

VENTING COMPONENTS

Part Number	Description															List Price	
		GTS-1100-I	GTS-1100-E	GTS-3100-I	GTS-3100-E	GTS-5100-I	GTS-5100-E	GTS-140-NIH	GTS-140-NEH	GTS-240-NIH	GTS-240-NEH	GTS-340-NIH	GTS-340-NEH	GTS-540-NIH/P: SCT-199I	GTS-540X3-NIH		GTS-540-NEH/P: SCT-1990
100112545	3" Air intake hood	X	X	X													*
100112579	5" Air intake hood																*
100112407	4" Straight pipe (6" length)	X	X	X													*
100112580	5" Straight pipe (6" length)																*
100112406	4" Straight pipe (12" length)	X	X	X													*
100112581	5" Straight pipe (12" length)																*
100112404	4" Straight pipe (24" length)	X	X	X													*
100112582	5" Straight pipe (24" length)																*
100112403	4" Straight pipe (36" length)	X	X	X													*
100112583	5" Straight pipe (36" length)																*
100112402	4" Straight pipe (48" length)	X	X	X													*
100112584	5" Straight pipe (48" length)																*
100112405	4" Adjustable straight (7"- 9.9")	X	X	X													*
100112585	5" Adjustable straight (7"- 9.9")																*
100112401	4" 45 degree elbow	X	X	X													*
100112586	5" 45 degree elbow																*
100112400	4" 90 degree elbow	X	X	X													*
100112587	5" 90 degree elbow																*
100112732	4" Wall thimble (4"-7")	X	X	X													*
100112734	5" Wall thimble (4"-7")																*
100112733	4" Wall thimble (5"-10")	X	X	X													*
100112735	5" Wall thimble (5"-10")																*
100112414	4" Horizontal drain pipe	X	X	X													*
100112588	5" Horizontal drain pipe																*
100112413	4" Vertical drain pipe (M-F)	X	X	X													*
100112589	5" Vertical drain pipe (M-F)																*
100112410	4" Storm collar	X	X	X													*
100112590	5" Storm collar																*
100112408	4" Firestop	X	X	X													*
100112591	5" Firestop																*
100112412	4" Flat roof flashing	X	X	X													*
100112592	5" Flat roof flashing																*
100112411	4" Angled roof flashing	X	X	X													*
100112593	5" Angled roof flashing																*
100112419	4" Termination hood	X	X	X													*
100112594	5" Termination hood																*
100112424	4" Termination hood w/ thimble (4"-7")	X	X	X													*
100112425	4" Termination hood w/ thimble (5"-10")	X	X	X													*
100112547	4" Termination tee	X	X	X													*
100112595	5" Termination tee																*
100112415	4" Rain cap	X	X	X													*
100112548	4" Extreme weather rain cap	X	X	X													*
100112596	5" Extreme weather rain cap																*
100112549	4" Universal appliance adaptor - 3-in-1 (F-F adaptor, condensate drain, & back-flow preventer)	X	X	X													*
100112597	5" Universal appliance adaptor - 3-in-1 (F-F adaptor, condensate drain, & back-flow preventer)																*
100112416	4" Back-flow preventer & F-F adaptor	X	X	X													*
100112598	5" Back-flow preventer & F-F adaptor																*
100112399	4" F-F adaptor	X	X	X													*
100112599	5" F-F adaptor																*
100112409	4" Support strap (1")	X	X	X													*
100112600	5" Support strap (1")																*

RESIDENTIAL TANKLESS

PROLINE® XE HIGH EFFICIENCY COMBI BOILERS

10-Year Limited Heat Exchanger/5-Year Limited Parts Warranty

- Power Direct Vent Design with PVC, CPVC, Polypropylene, and stainless steel.
- Complies with SCAQMD Rule 1146.2 and other air quality management districts with similar requirements for NOx emissions of less than 14 ng/J or 20 ppm

Model Number*†	Type	AFUE Efficiency	Gas Input			Approx. Shipping Weight (lbs)	List Price
			Minimum BTU/H	DHW Maximum BTU/H	Space Heating Maximum BTU/H		
SCB-110S-N	Indoor	95%	11,000	110,000	102,000	139	\$3,805
SCB-150S-N	Indoor	95%	15,000	150,000	139,000	142	4,116
SCB-199S-N	Indoor	95%	19,900	199,000	185,000	159	4,780

*For propane, change the "N" to "P" in the model number when ordering (example: SCB-110S-P)

†"S" models can operate up to 4,500'. For high altitude (3,000' - 9,600'), change "S" to "H" when ordering (example: SCB-110H-N)

OPTIONAL ACCESSORIES

Part Number	Description	List Price
100289339	Condensate Neutralizer	*
100140485	2" Concentric PVC Vent Termination (110-150 models only)	*
100140480	3" Concentric PVC Vent Termination	*
100297430	Low Water Cut-Off	*
100301524	Low Water Cut-Off with Manual Reset	*
100297260	2" Sidewall PVC Termination (110-150 models only)	*
100296897	3" Sidewall PVC Termination	*
100112156	3/4" Isolation Valves	*
100296979	Floor Stand	*
100296965	LP Conversion Kit (110 models)	*
100296966	LP Conversion Kit (150 models)	*
100296970	LP Conversion Kit (199 models)	*
100304841	Primary/Secondary Manifold Kit	*

RESIDENTIAL ELECTRIC TANKLESS

5-Year Limited Warranty

Model	Wattage (kW)	Voltage (V)	Amperage (A)	Recommended Breaker Size	Recommended Wire Size	Dimensions			Approx. Ship Weight	Net Distributor Price
						Height	Width	Depth		
2-CHAMBER										
R2VS-140E	14.0	240	58	1 x 60	6+	17-3/4	11-1/2	6-1/8	13	\$281.83
R2VS-140X	14.0	208	67	2 x 40	8	17-3/4	11-1/2	6-1/8	13	\$281.83
R2VS-160E	16.0	240	67	2 x 40	8	17-3/4	11-1/2	6-1/8	13	\$281.83
4-CHAMBER										
R4LS-180E	18.0	240	75	2 x 40	8	18-1/8	17	6-1/8	20	\$298.60
R4LS-220E	22.0	240	92	2 x 50	6+	18-1/8	17	6-1/8	20	\$332.00
R4LS-240E	24.0	240	100	2 x 60	6+	18-1/8	17	6-1/8	20	\$364.69
R4LS-280E	28.0	240	117	2 x 60	6+	18-1/8	17	6-1/8	20	\$471.62
R4LS-280X	28.0	208	135	2 x 70	6+	18-1/8	17	6-1/8	20	\$471.62
R4MS-320E	32.0	240	133	2 x 70	6+	18-1/8	17	6-1/8	20	\$503.94

+ Maximum recommended wire size is #6 cu AWG

COMMERCIAL GAS & ELECTRIC INFORMATION

WARRANTIES.....

Sandblaster Gas – 3-year limited warranty on tank; 1-year limited warranty on parts

Sandblaster Electric – 3-year limited warranty on tank; 1-year limited warranty on all other parts

Optional 5-Year Limited Warranty – Available on most commercial gas and electric models. Extended warranty to be purchased separately.

Light Service Electric – 6-year limited warranty on tank; 1-year limited warranty on parts

Specialty Ultra Force – 5-year limited warranty on tank; 1-year limited warranty on parts

Tankless – 6-year limited warranty on heat exchanger; 5-year limited warranty on parts

Tankless Racks – 6 year limited heat exchanger warranty; 5 year limited warranty for tankless parts; 1-year limited warranty on rack parts

ORDERING INFORMATION.....

ELECTRIC

Patriot- Light Duty Electric

PCE models not available as ASME tanks. Maximum input is 12 kW and can be ordered in 120, 240, 277 and 480 Volts. 120 and 277 are single phase only. Not all wattage and voltage combinations are available, see Accessories for details.

Sandblaster CSB

CSB models are available as ASME tank construction (Add \$413.00) and ship with CSA Certified and ASME rated T&P relief valve. Maximum input is 54 kW and can be ordered in 208, 240, 277 and 480 volts. 277 is single phase only. All models come as three phase unless specified and are field convertible to single phase. 208 volt 54 kW are 3 phase only and not convertible to single phase. Models available as immersion or surface mounted thermostat versions. Use SFE for surface mounted and IFE for immersion thermostats. Add \$51 for 277 and 480 volt models.

Voltage	Model No. Suffix	Price Each
208	X	—
240	E	—
277	Y	\$51
480	B	51

SSE Statesman

SSE models are immersion thermostat only, maximum 90 kW and ship with CSA Certified and ASME rated T&P relief valve. All models are ASME construction only. Specify wattage and voltage when ordering. All units except 277 ship in 3 phases and are convertible to single phase in most cases. Add \$51 for 277 and 480 volt models.

GAS

Specify natural or propane (LP) gas. Substitute “P” for “N” in the model number. Add \$40.00 to the distributor price when propane (LP) gas is specified.

Certain models are available with ASME construction. Consult local codes to determine if ASME code tank is required.

All Sandblaster models will be shipped with a CSA Certified and ASME rated T&P Relief Valve.

ACCESSORIES.....

SIDE WALL POWER VENT KITS

Kit #	Gas Models	List Price
100109234	65-100MBTU	*
100110445	120-200MBTU	*
100109235	250-500MBTU	*

LEG KIT FOR UL SANITATION TO MEET NSF 5*

Kit #	Gas Models	List Price
100109227	SBD	*
100211940	SBL	*

CONDENSATE NEUTRALIZATION KITS

FOR USE WITH PREMIER(R)PV, SHE 50-100, SHE 75-100 AND SUF MODELS.

Part Number	Description	List Price
100289339	Kit, NEUTRALIZER, 300K BTU, CN2-300	*
100289340	Kit, NEUTRALIZER, 850K BTU, CN4-850	*
100289581	Kit, NEUTRALIZER, 2 MIL BTU, CN4-2000	*
100289582	Kit, NEUTRALIZER, 6 MIL BTU, CN6T	*
100295915	Kit, NEUTRALIZER, RECHARGE, 3000K BTU, O-RINGS	*
100295916	Kit, NEUTRALIZER, RECHARGE, 850K BTU, O-RINGS	*
100295917	Kit, NEUTRALIZER, RECHARGE, 2M BTU, O-RINGS	*
100295918	Kit, NEUTRALIZER, TANK, 6M BTU	*

CONCENTRIC VENT KITS

FOR USE WITH PREMIER(R)PV, SHE 50-100, SHE 75-100 AND SUF MODELS.

Part Number	Description	List Price
100111100	Kit Concentric Vent 3" for GP6 50 YTPDT, GP6 75 YTPDT, SHE50-100, SHE75-100, AND SUF60-120 through SUF100-250	*
100113124	Kit Concentric Vent 6" for SUF119-300 through SUF119 500 Models	*

*Call the State Parts Department to order at 800-821-2017.

"Weight for 3" concentric 10 Lbs"

"Weight for 6" concentric 12 Lbs"

SUF COMMON VENT KITS

Part Number	Description: 1 Kit required for each water heater. Kits allow for common venting of two water heaters. Sidewall only.	List Price
100227396	SUF 120 -250, PVC Common Vent Kit	*
100223775	SUF 300-500, PVC Common Vent Kit	*
100227395	SUF 120 - 250, Polypropylene Common Vent Kit	*
100223774	SUF 300 - 500, Polypropylene Common Vent Kit	*

BUILDING MANAGEMENT SYSTEM BACnet & MODBUS INTERFACE

BMS gateway for controlling of State Water Heaters

Connect your State Water Heater to your building management system using the new Millennium control from ICC (Industrial Control Communications, Inc.)

- Works with Ultra Force, SUF, SUFL, SHE, SEV/SEH, SSE and CSB-IFE



ETH-1000 Ethernet connection
Mirius Serial Gateway

Kit Part #	Connection Type	List Price
100316044	Serial	*
100316045	Ethernet (IP)	*

One unit needed per water heater.

WATER HEATER ACCESSORIES

MISCELLANEOUS

Package Number	Connection Type	Approx. Shipping Weight (lbs.)	List Price
100331828	Air filter kit for CSHP-120 commercial heat pump water heater	2	*

SANDBLASTER® SELF CLEANING

3-Year Limited Warranty

- All models meet the thermal efficiency and standby loss requirements of the U.S. Department of Energy and current edition of ASHRAE/IES 90.1
- SBS models comply with Texas Requirements for Low-NOx emissions of less than 40 ng/J

Model Number	Gallon Capacity	Input BTU/HR	100°F Rise Recovery G.P.H.	Dimensions in Inches			Load Factor	Approx. Shipping Weight (lbs)	Net Distributor Price
				Draft Hood Outlet	Diameter	Height			
LIGHT DUTY									
SBS55-60	55	60,000	58/52‡	4	24	59 3/4	1.33	185	\$2,744
SBS75-76NE	74	75,100	73	4	26-1/2	61-1/4	1.59	275	3,842
SBS100-76NE	98	75,100	73	4	27-3/4	68-5/8	1.85	350	4,761
FLUE DAMPER MODELS									
SBD71-120NE†	71	120,000	116	5	27-3/4	69-3/4	2.94	210	7,442
SBD81-154NE	81	154,000	149	6	27-3/4	67-1/2	2.94	470	9,457
SBD76-180-NE	76	180,000	175	6	27-3/4	67-1/2	2.94	576	9,750
SBD100-199NET	100	199,000	193	6	27-3/4	75	2.94	603	9,920
SBD81-199NE	81	199,000	193	6	27-3/4	67-1/2	2.94	470	9,709
SBD100-199NES	100	199,000	193	6	30-1/4	72	2.94	630	9,964
SBD100-250NE*	100	250,000	242	8	30-1/4	72	2.94	630	11,010
SBD65-251NE*	65	251,000	243	8	27-3/4	75	2.94	750	10,458
SBD100-275NE*	100	275,000	267	8	30-1/4	72	2.94	630	11,466
SBD65-305NE	65	305,000	296	8	27-3/4	75	2.08	750	11,689
SBD85-365NE	85	365,000	354	8	27-3/4	79-1/2	2.94	725	13,118
SBD100-390NE	100	390,000	378	8	30-1/4	75-1/2	2.94	760	16,389
SBD85-500NE***	85	500,000	485	8	27-3/4	81-1/2	2.94	812	18,466
ASME MODELS - ASME MODELS ARE DESIGN CERTIFIED FOR A MAXIMUM ALLOWABLE WORKING PRESSURE OF 160 PSI									
SBD100-199NES-A	100	199,000	193	6	30-1/4	72	2.94	724	12,563
SBD100-250NE-A*	100	250,000	242	8	30-1/4	72	2.94	725	13,482
SBD65-251NE-A*	65	251,000	243	8	27-3/4	75	2.94	862	12,904
SBD100-275NE-A*	100	275,000	267	8	30-1/4	72	2.94	724	13,950
SBD65-305NE-A	65	305,000	296	8	27-3/4	75	2.08	862	14,045
SBD85-365NE-A	85	365,000	354	8	27-3/4	79-1/2	2.94	833	15,519
SBD100-390NE-A	100	390,000	378	8	30-1/4	75-1/2	2.94	874	18,679
SBD85-500NE-A***	85	500,000	485	8	27-3/4	81-1/2	2.94	857	20,222

†A 5" x 6" vent reducer is provided with this unit.

*An 6" x 8" reducer provided with each unit. Certified for either 6" or 8" venting. See local codes.

***Induced draft design, Category I Venting.

Substitute "P" for "N" in model number for LP (Propane) gas models and add \$40.00 to Distributor Price.

‡SBS55 60NE propane 54,000 BTU.

This product is considered standard and qualifies for the commercial program.

SANDBLASTER® FORCE™ POWER DIRECT VENT

3-Year Limited Warranty

Model Number	Gallon Capacity	Input BTU/HR	100°F Rise Recovery G.P.H.	Dimensions in Inches			Load Factor	Approx. Shipping Weight (lbs)	Net Distributor Price
				Vent Size	Diameter	Height			
SDV75-76NE	75	76,000	73.7	3 or 4	26	70-5/8	1.96	277	\$5,348

When ordering propane, change “N” to “P” in model number (example: SDV75 76PE) and add \$40.00.

Models certified for sea level to 10,100 ft. elevations.

This product is considered standard and qualifies for the commercial program.

SANDBLASTER® SBL ULTRA-LOW NOx

3-Year Limited Warranty

- Complies with California SCAQMD Rule 1146.2 and other air quality management districts with similar requirements of 20 ppm and 14 ng/J Low NOx requirements

Model Number	Gallon Capacity	Input BTU/HR	100°F Rise Recovery G.P.H.	Dimensions in Inches			Load Factor	Approx. Shipping Weight (lbs)	Net Distributor Price
				Draft Outlet	Diameter	Height			
SBL81-120NE	81	120,000	115	6	27-3/4	63-3/4	3.13	605	\$6,770
SBL81-154NE	81	154,000	148	6	27-3/4	63-3/4	3.13	605	8,694
SBL81-180NE	81	180,000	173	6	27-3/4	63-3/4	3.13	605	9,340
SBL81-199NE	81	199,000	191	6	27-3/4	63-3/4	3.13	605	8,861
SBL100-199NE*	100	199,000	191	6	27-3/4	71-3/4	3.13	665	8,861
SBL100-250NE	100	250,000	240	6	27-3/4	71-3/4	3.13	665	9,757
SBL100-275NE	100	275,000	264	6	27-3/4	71-3/4	3.13	665	10,097
SBL86-310NE	86	310,000	298	6	27-3/4	71-3/4	3.13	740	11,078
SBL86-366NE	86	366,000	352	6	27-3/4	71-3/4	3.13	740	13,448
SBL86-390NE	86	390,000	375	6	27-3/4	71-3/4	3.13	740	14,537
SBL100-250NEA	100	250,000	240	6	27-3/4	71-3/4	3.13	715	13,130
SBL100-275NEA	100	275,000	264	6	27-3/4	71-3/4	3.13	715	12,521
SBL86-310NEA	86	310,000	298	6	27-3/4	71-3/4	3.13	790	14,751
SBL86-366NEA	86	366,000	352	6	27-3/4	71-3/4	3.13	790	15,862
SBL86-390NEA	86	390,000	375	6	27-3/4	71-3/4	3.13	790	16,672

Electrical characteristics – 120V-60 Hz A. C., 5.0A.

“A” after model number designates ASME construction.

Leg kits for UL sanitation to meet NSF-5 (increases overall height by 4”).

NSF Leg Kit Part No.100211940 – \$352.00 List.

*SBL 100-199PE now available in LP gas.

This product is considered standard and qualifies for the commercial program.

COMMERCIAL GAS

SANDBLASTER® SBL LOW-NO_x SINGLE FLUE MODEL

3-Year Limited Warranty

- Complies with California SCAQMD Rule 1146.2 and other air quality management districts with similar requirements of 20 ppm and 14 ng/J Low NO_x requirements
- No 120V power source required

Model Number	Gallon Capacity	Input BTU/HR	100°F Rise Recovery G.P.H.	Dimensions in Inches			Load Factor	Approx. Shipping Weight (lbs)	Net Distributor Price
				Vent Size	Height	Diameter			
SBL75-76NE	74	75,100	73	4	62-1/16	25-1/4	0.88	285	\$3,429
SBL100-76NE	98	75,100	74	4	70-1/2	27-3/4	1.79	350	4,057

Available in Natural Gas only.

This product is considered standard and qualifies for the commercial program.

Plant of manufacture: McBee, South Carolina

FORCE™ 90 HIGH EFFICIENCY POWER VENT

3-Year Limited Warranty

- ENERGY STAR® Qualified
- Vents using PVC, Polypropylene or CPVC pipe
- Model complies with Texas Low-NO_x and air quality management districts with NO_x emission requirements of less than 40 ng/J

Model Number	Gallon Capacity	Input BTU/HR	100°F Rise Recovery G.P.H.	Dimensions in Inches			Load Factor	Approx. Shipping Weight (lbs)	Net Distributor Price
				Vent Size	Diameter	Height Including Blower			
SHE50-76NE	50	76,000	86	2, 3 or 4	22	71-1/8	1.39	245	\$3,967

Available in natural gas only.

Standard model certified for sea level to 5,300 ft. elevation. Order SHE50 76NED for elevations to 10,100 ft.

Optional Condensate Neutralizer Kit available (Part Number 100289339).

This product is considered standard and qualifies for the commercial program.

Plant of manufacture: McBee, South Carolina

FORCE™ 90+ HIGH EFFICIENCY POWER DIRECT VENT

3-Year Limited Warranty

- ENERGY STAR® Qualified
- Vents using PVC, Polypropylene or CPVC pipe
- Optional powered anode available for long-lasting tank protection
- Complies with SCAQMD Rule 1146.2 and other air quality management districts with similar requirements for Ultra-low NO_x emission requirements of 14 ng/J or 20 ppm

Model Number	Gallon Capacity	Input BTU/HR	100°F Rise Recovery G.P.H.	Dimensions in Inches			Load Factor	Approx. Shipping Weight (lbs)	Net Distributor Price
				Vent Size	Diameter	Height Including Blower			
SHE50-100NE	50	100,000	116	2 or 3	22	66-3/4	1.39	264	\$5,722
SHE75-100NE	75	100,000	116	2 or 3	27-3/4	65-1/4	2.94	382	7,866

Standard model certified from sea level to 10,100 ft. elevation.

Optional Concentric Vent Kits (100111100) and Condensate Neutralization Kits (100289339).

Substitute "P" for "N" in model number for LP (Propane) gas models and add \$40.00 to Distributor Price.

Optional Powered Anode available. Specify when ordering and add \$75 to the price of each unit.

This product is considered standard and qualifies for the commercial program.

Plant of manufacture: McBee, South Carolina

MODULATING ULTRA FORCE™

3-Year Limited Warranty

- ENERGY STAR® Qualified
- Vents using PVC, CPVC, Polypropylene, UL-1738, or AL-29-4C Stainless Steel
- Complies with SCAQMD Rule 1146.2 and other air quality management districts with similar Ultra-low NOx emission requirements of 14 ng/J or 20 ppm

Model Number	Gallon Capacity	Input BTU/HR	100°F Rise Recovery G.P.H.	Dimensions in Inches			Load Factor	Approx. Shipping Weight (lbs)	Net Distributor Price
				Vent Size Outlet	Diameter	Height			
SUF60-120NE	60	120,000	138	3	27-3/4	55-1/2	2.94	460	\$8,436
SUF60-120NEA	60	120,000	138	3	27-3/4	55-1/2	2.94	490	10,863
SUF100-150NE	100	150,000	178	3	27-3/4	76-1/2	3.13	523	11,478
SUF100-150NEA	100	150,000	178	3	27-3/4	76-1/2	3.13	553	14,191
SUF100-199NE	100	199,900	235	3	27-3/4	76-1/2	3.33	523	11,288
SUF100-199NEA	100	199,900	235	3	27-3/4	76-1/2	3.33	553	14,346
SUF100-250NE	100	250,000	291	3	27-3/4	76-1/2	3.57	523	13,178
SUF100-250NEA	100	250,000	291	3	27-3/4	76-1/2	2.94	553	15,580
SUF119-300NE	119	300,000	349	4	33-1/8	75-3/4	2.94	855	14,826
SUF119-300NEA	119	300,000	349	4	33-1/8	75-3/4	3.13	855	17,145
SUF119-400NE	119	399,900	460	4	33-1/8	75-3/4	2.94	855	16,250
SUF119-400NEA	119	399,900	460	4	33-1/8	75-3/4	3.33	855	18,778
SUF119-500NE	119	499,900	576	4	33-1/8	75-3/4	3.33	855	18,747
SUF119-500NEA	119	499,900	576	4	33-1/8	75-3/4	3.33	855	20,611

Electrical characteristics – 120V - 60Hz A.C., 5.0A.

Add \$40.00 to price for propane models. Change “N” to “P” in model number for propane.

“A” in model represents ASME construction.

Concentric Vent Kit 100111100 for SUF60-120 through SUF 100-250 Models.

Concentric Vent Kit 100113124 for SUF 119-300 through SUF 119-500.

Condensate Neutralization Kits available.

Optional common vent kits available.

This product is considered standard and qualifies for the commercial program.

Plant of manufacture: McBee, South Carolina

MODULATING ULTRA FORCE™ XL

5-Year Limited Warranty

- ENERGY STAR® Qualified
- Vents using PVC, CPVC, Polypropylene, UL-1738, or AL-29-4C Stainless Steel
- Complies with SCAQMD Rule 1146.2 and other air quality management districts with similar Ultra-low NOx emission requirements of 14 ng/J or 20 ppm

Model Number	Gallon Capacity (nominal)	Recovery @ 100° F Rise Gallon Per Hour	Input BTU/HR *Natural Gas	Dimensions in Inches			Load Factor	Approx. Shipping Weight (lbs)	List Price
				Height	Diameter	Vent Size			
SUS-120-750A	120	882	750,000	80-3/4	44-1/2	6	3.57	1,300	\$28,040
SUS-120-1000A	120	1176	1,000,000	80-3/4	44-1/2	6	3.57	1,300	30,424

Electrical characteristics - 120V-60 Hz A.C., 5.0A.

Add \$40.00 to price for propane models. Change “N” to “P” in model number for propane.

“A” in model number represents ASME construction.

Optional Condensate Neutralization Kits available. 100289340 (for SUS-120-750A) or 100289581 (for SUS-120-1000A).

This product is considered specialty and does NOT qualify for the standard commercial program.

Plant of manufacture: McBee, South Carolina

COMMERCIAL GAS

MODULATING ULTRA FORCE™ LV

5-Year Limited Warranty

- ENERGY STAR® Qualified
- Vents using PVC, CPVC, Polypropylene, UL-1738, or AL-29-4C Stainless Steel
- Complies with SCAQMD Rule 1146.2 and other air quality management districts with Similar Ultra-low NOx emission requirements of 14 ng/J or 20 ppm

Model Number	Gallon Capacity (nominal)	Recovery @ 100° F Rise Gallon Per Hour	Input BTU/HR *Natural Gas	Dimensions in Inches			Load Factor	Approx. Shipping Weight (lbs)	List Price
				Height	Diameter	Vent Size			
SUFL-250-150A	250	175	150,000	91-1/2	42-1/8	3 or 4	8.33	1125	\$12,074
SUFL-250-199A	250	230	199,900	91-1/2	42-1/8	3 or 4	8.33	1125	12,982
SUFL-250-250A	250	285	250,000	91-1/2	42-1/8	3 or 4	8.33	1125	13,889
SUFL-220-300A	220	342	300,000	91-1/2	42-1/8	4 or 6	8.33	1420	19,758
SUFL-220-400A	220	451	399,900	91-1/2	42-1/8	4 or 6	8.33	1420	21,140
SUFL-220-500A	220	557	499,900	91-1/2	42-1/8	4 or 6	8.33	1420	22,616

Electrical characteristics - 120V-60 Hz A.C., 5.0A.

Add \$40.00 to price for propane models. Change "N" to "P" in model number for propane.

"A" in model number represents ASME construction.

Concentric Vent Kit 100111100 for SUFL-250-150A through SUFL-250-250A models.

Concentric Vent Kit 100113124 for SUFL-220-300A through SUFL-220-500A models.

Condensate Neutralization Kit 100289339 for SUFL-250-150A through SUFL-250-199A models; kit 100289340 for SUFL-250-250A through SUFL-220-500A models.

This product is considered specialty and does NOT qualify for the standard commercial program.

Plant of manufacture: McBee, South Carolina

COMMERCIAL GAS

POLARIS® HIGH EFFICIENCY COMMERCIAL

3-Year Limited Tank/1-Year Limited Parts Warranty

- Up to 96% Thermal Efficiency
- Vents with PVC, CPVC, ABS, or Polypropylene Pipe
- Modulating Burner
- Complies with SCAQMD rule 1146.2 and other air quality management districts with similar requirements for NOx emissions of less than 14 ng/J.
- Stainless Steel construction

Model Number*	Gallon Capacity	Recovery @ 100°F Rise Gallon Per Hour	Input BTU/HR	Thermal Efficiency	Vent Size	Dimensions in Inches			Load Factor	Approx. Shipping Weight (lbs)	Net Distributor Price
						Height to Top of Heater	Height to T&P	Diameter			
SPC-34-130-NE	34	149	130	96%	2 or 3	48-1/2	41	22	0.69	150	\$6,605
SPC-34-150-NE	34	171	150	94%	2 or 3	48-1/2	41	22	0.69	150	7,116
SPC-50-130-NE	50	149	130	95%	2 or 3	62-3/8	55	22	1.39	176	8,085
SPC-50-150-NE	50	171	150	95%	2 or 3	63-3/4	56-1/4	22	1.39	180	8,612
SPC-50-175-NE	50	200	175	96%	3	63-3/4	56-1/4	22	1.39	180	9,172
SPC-50-199-NE	50	227	199	96%	3	63-3/4	56-1/4	22	1.39	180	9,768

*For propane gas (LP) on Polaris® models, change "N" suffix to "P" suffix in the model number and add \$75/unit.

Optional 2" Concentric Vent (part 100093946) and 3" Concentric Vent (part 100111100) kits available.

This product is considered standard and qualifies for the commercial program.

Plant of manufacture: Johnson City, Tennessee

TITAN™ POWER GAS BURNER GPG

3-Year Limited Warranty

ATMOSPHERIC VENT									
Model Number	Gallon Capacity	Input BTU/HR	100°F Rise Recovery G.P.H.	Dimensions in Inches			Load Factor	Approx. Shipping Weight (lbs)	Net Distributor Price
				Draft Hood Outlet	Diameter	Height			
GP685-540NEA	85	540,000	523	9	29-1/2	93	4.55	950	\$16,856
GP685-650NEA	85	650,000	630	9	29-1/2	93	4.55	950	17,424
GP685-740NEA	85	740,000	718	9	29-1/2	93	4.55	950	17,994

Authorized start-up service included – required to activate warranty. (Continental U.S. Only).

Plant of manufacture: McBee, South Carolina

Not available in propane gas.

ASME standard on all models.

All models comply with Texas requirements for Low-NOx emissions of less than 30 ppm.

GPV85 540-650 comply with SCAQMD and other air quality management districts requiring NOx emissions of 20 ppm.

This product is considered standard and qualifies for the commercial program.

VENTING OPTIONS		
Part Number	Description	List Price
100125540	Standard Atmospheric Kit (Vertical Vent)	*

When ordered with heater, vent option is included in heater pricing.

This product is considered standard and qualifies for the commercial program.

HORIZONTAL & DIRECT VENT									
Model Number	Gallon Capacity	Input BTU/HR	100°F Rise Recovery G.P.H.	Dimensions in Inches			Load Factor	Approx. Shipping Weight (lbs)	Net Distributor Price
				Draft Hood Outlet	Diameter	Height			
GPV85-540NEA	85	540,000	523	9	29-1/2	93	4.35	950	\$17,556
GPV85-650NEA	85	650,000	630	9	29-1/2	93	4.35	950	18,128
GPV85-740NEA	85	740,000	718	9	29-1/2	93	4.35	950	18,700

Authorized start-up service included – required to activate warranty. (Continental U.S. Only).

Plant of manufacture: McBee, South Carolina

Not available in propane gas.

ASME standard on all models.

All models comply with Texas requirements for Low-NOx emissions of less than 30 ppm.

GPV85 540-650 comply with SCAQMD and other air quality management districts requiring NOx emissions of 20 ppm.

This product is considered standard and qualifies for the commercial program.

VENTING OPTIONS		
Part Number	Description	List Price
100125500	Horizontal Sidewall Vent Kit	*
100131270	Horizontal Sealed Direct Vent Kit Termination Kit	*

When ordered with heater, vent option is included in heater pricing.

This product is considered standard and qualifies for the commercial program.

TITAN™ POWER OIL BURNER GPO

3-Year Limited Warranty

Model Number	Gallon Capacity	Input BTU/HR	100°F Rise Recovery G.P.H.	Dimensions in Inches			Load Factor	Approx. Shipping Weight (lbs)	Net Distributor Price
				Draft Hood Outlet	Diameter	Height			
GP086-199-OE	86	199,000	191	6	27-3/4	74-3/4	2.08	553	\$10,593
GP086-245-OE	86	245,000	235	8	27-3/4	74-3/4	2.08	554	10,845
GP084-315-OE	84	315,000	302	8	27-3/4	74-3/4	2.08	554	11,460
GP075-385-OE	75	385,000	369	8	27-3/4	73-3/4	2.08	624	13,500
GP075-455-OE	75	455,000	436	8	27-3/4	73-3/4	2.08	700	15,789
GP069-700-OE	69	700,000	671	10	27-3/4	73-3/4	2.08	739	19,443
GP084-315-OEA	84	315,000	302	8	27-3/4	74-3/4	2.08	657	13,863
GP075-385-OEA	75	385,000	369	8	27-3/4	73-3/4	2.08	742	15,898
GP075-455-OEA	75	455,000	436	8	27-3/4	73-3/4	2.08	747	18,186
GP069-700-OEA	69	700,000	671	10	27-3/4	73-3/4	2.08	822	21,831

ASME models have "A" at end of model number.

Burner and barometric control packaged separately.

Authorized start-up service included – required to activate warranty. (Continental U.S. Only)

Electrical characteristics: 120V, 60 Hz, A.C.

Optional 2-stage pump, add \$34.00.

This product is considered standard and qualifies for the commercial program.

Plant of manufacture: McBee, South Carolina

COMMERCIAL RACK SYSTEM

- Up to 6 tankless units on a single rack, maximum system input up to 1,194,000 BTU/Hr
- Factory assembled and piped

COMMERCIAL TANKLESS

Model*	Description	Configuration	Gas Consumption Input		Max GPM @ 100 F***	Dimensions			Shipping Weight (lbs.)	Distributor Net Price
			Minimum BTU	Maximum BTU/H		Length	Width	Height		
SCI-CRS-22WM-N	2 Unit Indoor Wall Mount Natural Gas		15,000	398,000	7.6	46	13.02	57	440	\$5,145
SCI-CRS-23WM-N	2 Unit Indoor Wall Mount Natural Gas		15,000	398,000	7.6	66	13.02	57	505	\$5,145
SCI-CRS-33WM-N	3 Unit Indoor Wall Mount Natural Gas		15,000	597,000	11.4	66	13.02	57	564	\$7,717
SCI-CRS-44WM-N	4 Unit Indoor Wall Mount Natural Gas		15,000	796,000	15.2	87.54	13.02	57	540	\$9,705
SCI-CRS-24IL-N	2 Unit Indoor Inline Natural Gas		15,000	398,000	7.6	46	30.5	53.09	330	\$7,014
SCI-CRS-26IL-N	2 Unit Indoor Inline Natural Gas		15,000	398,000	7.6	66	30.5	53.09	372	\$7,014
SCI-CRS-24B2B-N	2 Unit Indoor Back-To-Back Natural Gas		15,000	398,000	7.6	46	30.5	53.09	330	\$7,014
SCI-CRS-36IL-N	3 Unit Indoor Inline Natural Gas		15,000	597,000	11.4	66	30.5	53.09	447	\$10,017
SCI-CRS-34B2B-N	3 Unit Indoor Back-To-Back Natural Gas		15,000	597,000	11.4	46	30.5	53.09	404	\$10,017
SCI-CRS-36B2B-N	3 Unit Indoor Back-To-Back Natural Gas		15,000	597,000	11.4	66	30.5	53.09	447	\$10,017
SCI-CRS-44B2B-N	4 Unit Indoor Back-To-Back Natural Gas		15,000	796,000	15.2	46	30.5	53.09	481	\$13,126
SCI-CRS-46B2B-N	4 Unit Indoor Back-To-Back Natural Gas		15,000	796,000	15.2	66	30.5	53.09	519	\$13,126
SCI-CRS-56B2B-N	5 Unit Indoor Back-To-Back Natural Gas		15,000	995,000	19	66	30.5	53.09	597	\$16,432
SCI-CRS-66B2B-N	6 Unit Indoor Back-To-Back Natural Gas		15,000	1,194,000	22.8	66	30.5	53.09	674	\$19,737

Models part of commercial stocking program effective 1/1/2018

*For outdoor rack, change the SCI to SCO in the model number when ordering. Example: SCO-CRS-36IL-N

‡For Propane, change the N to P in the model number when ordering. Example: SCI-CRS-33WM-P

***Current numbers based on factory testing; 0.5 gpm required for activation; 0.4 gpm required for continuous fire after initial ignition

Racks utilize CT-199 tankless models

This product is considered standard and qualifies for the commercial program.

COMMERCIAL TANKLESS NON-CONDENSING

6-Year Limited Commercial Heat Exchanger/5-Year Limited Parts Warranty

- Power vent design
- Category III stainless steel venting

Model*	Description**	Gas Consumption Input		Thermal Efficiency	Hot Water Output (GPM)			Load Factor	Shipping Weight (lbs.)	List Price
		Minimum BTU/H	Maximum BTU/H		Maximum***	45 F Rise	70 F Rise			
GTS-910-NIE	Indoor/Outdoor	15,000	380,000	80% / 82%	14.5	13.5	8.7	0.31	113	\$5,178

*For propane, change the N to P in the model number when ordering. Example: GTS-910-PIE

**Outdoor installations require vent cap.

***Current numbers based on factory testing; 0.5 GPM required for activation; 0.4 GPM required for continuous fire after initial ignition.

CT-199 COMMERCIAL TANKLESS CONDENSING

6-Year limited commercial heat exchanger warranty/5-year limited parts warranty

- ENERGY STAR® Qualified***
- Power vent design vents in PVC, CPVC or ABS (intake and exhaust – solid core only)
- Complies with SCAQMD Rule 1146.2 and other air quality management districts with similar requirements for NOx emissions of less than 14 ng/J or 20 ppm

Model*	Description	Gas Consumption Input		Thermal Efficiency	UEF	Hot Water Output (GPM)			Load Factor	Shipping Weight (lbs.)	List Price
		BTU/H‡	Maximum BTU/H			Maximum**	45 F Rise	70 F Rise			
SCT-199I-N	Indoor Nat	15,000	199,000	96%	0.93	10.0	8.4	5.4	1.08	70	\$2,174
SCT-1990-N***	Outdoor Nat	15,000	199,000	96%	0.95	10.0	8.4	5.4	1.08	69	\$2,174

Not part of commercial stocking program

*For Propane, change the N to P in the model number when ordering. (Example: SCT-199I-P).

**Current Numbers based on factory testing; 0.5 GPM required for activation; 0.4 GPM required for continuous fire after initial ignition.

‡ Propane (LP) gas BTU/H is 13,000.

***ENERGY STAR® Qualified

TX1 - INTEGRATED COMMERCIAL TANKLESS ON TANK

6-Year limited heat exchanger and tank warranty/5-year limited parts warranty

Model Numbers	Description	Gallon Capacity	Recovery @ 100°F Rise Gallon Per Hour	Thermal Efficiency	Input BTU/HR	Load Factor	Shipping Weight (lbs.)	Net Distributor Price
STX-199-N	Indoor Nat	119	199,000	96%	199,000	2.94	520	\$11,288
STX-199-P	Indoor LP	119	199,000	96%	199,000	2.94	520	11,330

Models part of commercial stocking program effective 1/1/2018

COMMERCIAL GAS DUAL-FUEL

COMMERCIAL ELECTRIC TANKLESS

5-Year Limited Warranty

Model	Wattage (kW)	Voltage (V)	Amperage (A)	Recommended Breaker Size	Recommended Wire Size	Dimensions			Approx. Ship Weight	Net Distributor Price
						Height	Width	Depth		
2-CHAMBER										
C2VS-120E	12.2	240	51	1 x 60	6+	17-3/4	11-1/2	6-1/8	13	\$244.98
C2VS-140E	14.0	240	58	1 x 60	6+	17-3/4	11-1/2	6-1/8	13	\$361.55
C2VS-140X	14.0	208	67	2 x 40	8	17-3/4	11-1/2	6-1/8	13	\$361.55
C2VS-160E	16.0	240	67	2 x 40	8	17-3/4	11-1/2	6-1/8	13	\$361.55
4-CHAMBER										
C4LS-180E	18.0	240	75	2 x 40	8	18-1/8	17	6-1/8	20	\$382.39
C4LS-220E	22.0	240	92	2 x 50	6+	18-1/8	17	6-1/8	20	\$458.50
C4LS-280E	28.0	240	117	2 x 60	6+	18-1/8	17	6-1/8	20	\$618.92
C4LS-280X	28.0	208	135	2 x 70	6+	18-1/8	17	6-1/8	20	\$618.92
C4MS-320E	32.0	240	133	2 x 70	6+	18-1/8	17	6-1/8	20	\$635.91

+ Maximum recommended wire size is #6 cu AWG

LIGHT-SERVICE TANK-TYPE ELECTRIC

6-Year Limited Tank/1-Year Limited Parts Warranty

Model Number	Gallon Capacity	kW Input	No. of Elements	Dimensions in Inches		Load Factor	Approx. Shipping Weight (lbs)	Net Distributor Price
				Height to Top of Heater	Diameter			
EDT-6620RT	66	12.2	2	60-1/4	22	0.86	146	\$1,161
EDT-8020RT	80	12.2	2	60-1/2	24	1.39	175	1,279
EDT-1200RT	119	12.2	2	61-1/2	28	1.59	268	1,553

Available in 277 Volt only.

This product is considered standard and qualifies for the commercial program.

COMMERCIAL HEAT PUMP

Integrated Heat Pump Models

Model Number	Gallon Capacity	kW Input	Number of Elements	Recovery @ 100°F Rise Gallon Per Hour in Hybrid Mode	Dimensions in Inches		Approx. Shipping Weight (lbs)	Net Distributor Price
					Height	Diameter		
CSHP-120	119	12	2	90	69-3/4	31	620	\$9,461

Available in 208/240 volts Single phase only.

Optional air filter accessory kit (100331828) is available to order from State Replacement Parts List

This product is considered standard and qualifies for the commercial program.

COMMERCIAL HEAT PUMP

Split System Heat Pump Models - Air Source

Model Number		SHPA-60	SHPA-90	SHPA-185	SHPA-250	
		CFFP	CFFP	CFFP	CFFP	
Crating (must select one)	Crating - shipments within continental U.S.	CFFP	CFFP	CFFP	CFFP	
	Crating - shipments to Canada	CFFP	CFFP	CFFP	CFFP	
Options	Blower Fan (replacing axial fan)	Included	Included	CFFP	CFFP	
	PLC (Programmable Logic Controller)	CFFP	CFFP	Included	Included	
	MCP (Master Control Panel)	CFFP	CFFP	CFFP	CFFP	
	Modbus to BACnet Gateway	CFFP	CFFP	CFFP	CFFP	
	VFD	208-230V	N/A	N/A	CFFP	CFFP
		440-480V	N/A	N/A	CFFP	CFFP
		575V	N/A	N/A	CFFP	CFFP
	Cold Ambient Air Kit	CFFP	CFFP	CFFP	CFFP	
	Flourokem HS Urethane Coating	CFFP	CFFP	CFFP	CFFP	
	5-Year Extended Compressor Warranty	CFFP	CFFP	CFFP	CFFP	
Shipping Weight (lbs.)	F.O.B. Brewer, ME (shipping charges will be added to invoice)	626	1,086	1,550	2,400	
Freight Class	See product specification sheet for dimensions	110	85	92.5	110	

CFFP = Contact factory for pricing

N/A = Not available for this model

Included = Standard equipment for this model

This product is considered specialty and does NOT qualify for the commercial program.

Plant of Manufacture: Brewer, ME

COMMERCIAL HEAT PUMP

Split System Heat Pump Models - Water Source

Model Number		SHPW-60	SHPW-90	SHPW-185	
		CFFP	CFFP	CFFP	
Crating (must select one)	Crating - shipments within continental U.S.	CFFP	CFFP	CFFP	
	Crating - shipments to Canada	CFFP	CFFP	CFFP	
Options	PLC (Programable Logic Controller)	CFFP	CFFP	Included	
	MCP (Master Control Panel)	CFFP	CFFP	CFFP	
	Modbus to BACnet Gateway	CFFP	CFFP	CFFP	
	VFD	208-230V	N/A	N/A	CFFP
		440-480V	N/A	N/A	CFFP
		575V	N/A	N/A	CFFP
	Flourokem HS Urethane Coating	CFFP	CFFP	CFFP	
5-Year Extended Compressor Warranty	CFFP	CFFP	CFFP		
Shipping Weight (lbs.)	F.O.B. Brewer, ME (shipping charges will be added to invoice)	400	475	650	
Freight Class	See product specification sheet for dimensions	92.5	77.5	110	

CFFP = Contact factory for pricing

N/A = Not available for this model

Included = Standard equipment for this model

This product is considered specialty and does NOT qualify for the commercial program.

Plant of Manufacture: Brewer, ME

COMMERCIAL HEAT PUMP

Split System Heat Pump Models - Modular Water Source

Model Number		SHPM-270	SHPM-540	SHPM-810	SHPM-1080	SHPM-1350	SHPM-1620	SHPM-1890	SHPM-2160	
		CFFP	CFFP	CFFP	CFFP	CFFP	CFFP	CFFP	CFFP	CFFP
Crating (must select one)	Crating - shipments within continental U.S.	CFFP	CFFP	CFFP	CFFP	CFFP	CFFP	CFFP	CFFP	
	Crating - shipments to Canada	CFFP	CFFP	CFFP	CFFP	CFFP	CFFP	CFFP	CFFP	
Options	PLC (Programable Logic Controller)	Included	Included	Included	Included	Included	Included	Included	Included	
	MCP (Master Control Panel)	N/A	CFFP	CFFP	CFFP	CFFP	CFFP	CFFP	CFFP	
	Modbus to BACnet Gateway	CFFP	CFFP	CFFP	CFFP	CFFP	CFFP	CFFP	CFFP	
	VFD	208-230V	CFFP	CFFP	CFFP	CFFP	CFFP	CFFP	CFFP	CFFP
		440-480V	CFFP	CFFP	CFFP	CFFP	CFFP	CFFP	CFFP	CFFP
		575V	CFFP	CFFP	CFFP	CFFP	CFFP	CFFP	CFFP	CFFP
	Flourokem HS Urethane Coating	CFFP	CFFP	CFFP	CFFP	CFFP	CFFP	CFFP	CFFP	
5-Year Extended Compressor Warranty	CFFP	CFFP	CFFP	CFFP	CFFP	CFFP	CFFP	CFFP		
Shipping Weight (lbs.)	F.O.B. Brewer, ME (shipping charges will be added to invoice)	1,400	2,800	4,200	5,600	7,000	8,400	9,800	11,200	
Freight Class	See product specification sheet for dimensions	70	70	70	70	70	*	*	*	

* Combination of multiple AHPM-270 modules

CFFP = Contact factory for pricing

N/A = Not available for this model

Included = Standard equipment for this model

This product is considered specialty and does NOT qualify for the commercial program.

Plant of Manufacture: Brewer, ME

PATRIOT™ LIGHT-DUTY TANK-TYPE ELECTRIC

3-Year Limited Warranty

Model Number	Gallon Capacity	kW Input	Number of Elements	Dimensions in Inches		Load Factor	Approx. Shipping Weight (lbs)	Net Distributor Price
				Diameter	Height			
COMPACT MODELS								
PCE-6-10MS-A	6	1.5	1	14-1/4	15-1/2	0.08	35	\$990
PCE-10-10MS-A	10	1.5	1	18	18-1/4	0.14	54	1,060
PCE-17-10MS-A	15	1.5	1	18	26	0.22	58	1,116
PCE-20-10MS-A	20	1.5	1	21-3/4	22-1/4	0.21	73	1,196
LOWBOY MODELS								
PCE-30-20LS-A*	36	4.5	2	26	33-1/2	0.40	118	2,454
PCE-40-20LS-A*	38	4.5	2	23	32	0.37	118	2,799
PCE-50-20LS-A*	51	4.5	2	26-1/2	36	0.76	172	3,101
TALL MODELS								
PCE-30-20RT-A*	40	4.5	2	20-1/2	49-3/4	0.31	118	2,462
PCE-40-20RT-A*	50	4.5	2	20-1/2	59	0.86	125	2,700
PCE-52-20RT-A*	55	4.5	2	24	56-1/2	1.14	145	3,017
PCE-66-20RT-A*	66	6.1	2	21-3/4	60-3/4	1.00	176	3,432
PCE-82-20RT-A*	80	6.1	2	24	59-3/8	0.83	211	3,815
PCE-120-20RT-A*	119	6.1	2	29-3/8	62-7/16	1.75	326	5,333

*Only available as two element model.

PCE models 10- 20 have T&P installed and heaters are side connect.

PCE 6 are side inlet, top outlet with installed T&P. Prices shown are for 120, 208, 240, 277 and 480V.

This product is considered standard and qualifies for the commercial program.

KW Input Availability

Patriot electric water heaters are shipped with the standard voltage and kW inputs shown above unless otherwise specified when ordering. The chart below shows available inputs (in kW) for Patriot Water Heaters at different voltages.

Models & Elements	Voltage	Wiring	kW Input Available											
6-Gallon Models Single-Element	120V*	-		1.5	2	2.5	3							
	208V	-	1	1.5	2	2.5	3							
	240V	-	1	1.5	2	2.5	3							
	277V*	-		1.5	2	2.5	3							
	480V	-			2	2.5	3							
10-Gallon through 20-Gallon Models Single-Element	120V*	-		1.5	2	2.5	3							
	208V	-	1	1.5	2	2.5	3	3.5	4	4.5	5	5.5	6	
	240V	-	1	1.5	2	2.5	3		4	4.5	5	5.5	6	
	277V*	-		1.5	2	2.5	3		4	4.5	5		6	
	480V	-			2	2.5	3		4	4.5	5	5.5	6	

*Single-Phase only.

Model		Element Wattage				
		120V	208V	240V	277V	480V
PCE-30-20LS	Min Watts	N/A	4500	4500	4500	4500
	Max Watts	N/A	6000 (*)	6000 (*)	6000	6000
PCE-40-20LS	Min Watts	N/A	4500	4500	4500	4500
	Max Watts	N/A	6000 (*)	6000 (*)	6000	6000
PCE-50-20LS	Min Watts	N/A	4000	4000	4000	4000
	Max Watts	N/A	6000 (*)	6000 (*)	6000	6000
PCE-30-20RT	Min Watts	N/A	4500	4500	4500	4500
	Max Watts	N/A	6000 (*)	6000 (*)	6000	6000
PCE-40-20RT	Min Watts	3000 (*)	3000	3000	3000	3000
	Max Watts	3000 (*)	6000 (*)	6000 (*)	6000	6000
PCE-52-20RT	Min Watts	2500	2500	2500	2500	2500
	Max Watts	3000 (*)	6000 (*)	6000 (*)	6000	6000

Additional limitations apply to 120V, 208V, and 240V - Simultaneous Operation are not available (*) for these voltages.

SANDBLASTER® SELF CLEANING WITH FACTORY FUSING INCLOY ELEMENTS WITH SURFACE-MOUNTED THERMOSTATS

3-Year Limited Warranty

- All models meet the standby loss requirements of the U.S. Department of Energy and current edition of ASHRAE/IES 90.1

Model Number	Gallon Capacity	kW Input	Number of Elements	Standard Voltage	Dimensions in Inches		Load Factor	Approx. Shipping Weight (lbs)	Net Distributor Price
					Diameter	Height			
CSB-52-12-SFE	50	12.3	3	208	21-3/4	55-3/4	1.19	260	\$4,424
CSB-52-135-SFE	50	13.5	3	208	21-3/4	55-3/4	1.19	260	4,476
CSB-52-15-SFE	50	15	3	208	21-3/4	55-3/4	1.19	260	4,476
CSB-52-18-SFE	50	18	3*	208	21-3/4	55-3/4	1.19	260	4,544
CSB-52-24-SFE	50	24	6	208	21-3/4	55-3/4	1.19	265	5,641
CSB-52-27-SFE	50	27	6	208	21-3/4	55-3/4	1.19	265	5,813
CSB-52-30-SFE	50	30	6	208	21-3/4	55-3/4	1.19	265	5,911
CSB-52-36-SFE	50	36	6	208	21-3/4	55-3/4	1.19	265	5,937
CSB-82-12-SFE	80	12.3	3	208	25-1/2	60-1/4	1.85	280	5,648
CSB-82-135-SFE	80	13.5	3	208	25-1/2	60-1/4	1.85	280	5,700
CSB-82-15-SFE	80	15	3	208	25-1/2	60-1/4	1.85	280	5,700
CSB-82-18-SFE	80	18	3*	208	25-1/2	60-1/4	1.85	280	5,768
CSB-82-24-SFE	80	24	6	208	25-1/2	60-1/4	1.85	280	6,865
CSB-82-27-SFE	80	27	6	208	25-1/2	60-1/4	1.85	280	7,037
CSB-82-30-SFE	80	30	6	208	25-1/2	60-1/4	1.85	280	7,135
CSB-82-36-SFE	80	36	6*	208	25-1/2	60-1/4	1.85	280	7,161
CSB-82-405-SFE	80	40.5	9	208	25-1/2	60-1/4	1.85	280	8,409
CSB-82-45-SFE	80	45	9	208	25-1/2	60-1/4	1.85	280	8,415
CSB-82-54-SFE	80	54	9	208	25-1/2	60-1/4	1.85	280	8,560
CSB-120-12-SFE	119	12.3	3	208	29-1/2	62-1/4	2.08	390	6,588
CSB-120-135-SFE	119	13.5	3	208	29-1/2	62-1/4	2.08	390	6,640
CSB-120-15-SFE	119	15	3	208	29-1/2	62-1/4	2.08	390	6,640
CSB-120-18-SFE	119	18	3*	208	29-1/2	62-1/4	2.08	390	6,708
CSB-120-24-SFE	119	24	6	208	29-1/2	62-1/4	2.08	390	7,805
CSB-120-27-SFE	119	27	6	208	29-1/2	62-1/4	2.08	390	7,977
CSB-120-30-SFE	119	30	6	208	29-1/2	62-1/4	2.08	390	8,076
CSB-120-36-SFE	119	36	6*	208	29-1/2	62-1/4	2.08	390	8,102
CSB-120-405-SFE	119	40.5	9	208	29-1/2	62-1/4	2.08	395	9,350
CSB-120-45-SFE	119	45	9	208	29-1/2	62-1/4	2.08	395	9,355
CSB-120-54-SFE	119	54	9	208	29-1/2	62-1/4	2.08	395	9,500

*208 volt models may use three additional elements. 54 kW not available in 208 single phase.

Plant of manufacture: McBee, South Carolina

For 277 and 480 volt, add \$51.00 to the distributor price. For ASME tank construction, add \$413.00 to the above prices and "A" to the model number. Shipping weight will increase 50 pounds with ASME construction. ASME Models are design certified for a maximum allowable working pressure of 160 PSI. CSB-SFE models are not recommended for sanitizing water applications requiring 180°F. All above prices include a CSA approved and ASME rated T&P relief valve. Field conversion kits allow easy change of voltage and kW inputs. This product is considered standard and qualifies for the commercial program.

Model Number	Loading Percentage 53'	Full Truck Load 53'	Voltage	Model Number Suffix	Price Each
CSB-52	1.00	100	208	X	—
CSB-82	2.08	48	277	Y	\$51
CSB-120	2.22	45	480	B	51

Sandblaster electric models are available in 208, 240, 277 and 480 volt. 277V models are single phase only. When ordering please specify total kW.

ELECTRIC MANIFOLD KITS		
Manifold Kit Description	Part Number	List Price
Dual Manifold Kit	100109231	*
Triple Manifold Kit	100109232	*
Quad Manifold Kit	100109233	*

Note: These kits are for use with CSB 52, 82 and 120 models only.

SANDBLASTER® SELF CLEANING WITH FACTORY FUSING INCLOY ELEMENTS, ADVANCED CONTROL, IMMERSION THERMOSTATS

3-Year Limited Warranty

- All models meet the standby loss requirements of the U.S. Department of Energy and current edition of ASHRAE/IES 90.1

Model Number	Gallon Capacity	kW Input	Number of Elements	Standard Wattage	Dimensions in Inches		Load Factor	Approx. Shipping Weight (lbs)	Net Distributor Price
					Diameter	Height			
CSB-52-12-IFE	50	12.3	3	208	21-3/4	55-3/4	1.19	260	\$6,008
CSB-52-135-IFE	50	13.5	3	208	21-3/4	55-3/4	1.19	260	6,060
CSB-52-15-IFE	50	15	3	208	21-3/4	55-3/4	1.19	260	6,060
CSB-52-18-IFE	50	18	3*	208	21-3/4	55-3/4	1.19	260	6,128
CSB-52-24-IFE	50	24	6	208	21-3/4	55-3/4	1.19	265	7,225
CSB-52-27-IFE	50	27	6	208	21-3/4	55-3/4	1.19	265	7,396
CSB-52-30-IFE	50	30	6	208	21-3/4	55-3/4	1.19	265	7,495
CSB-52-36-IFE	50	36	6*	208	21-3/4	55-3/4	1.19	265	7,521
CSB-52-405-IFE	50	40.5	9	208	21-3/4	55-3/4	1.19	265	8,769
CSB-52-45-IFE	50	45	9	208	21-3/4	55-3/4	1.19	265	8,774
CSB-52-54-IFE	50	54	9	208	25-1/2	55-3/4	1.19	265	8,920
CSB-82-12-IFE	80	12.3	3	208	25-1/2	60-1/4	1.85	280	7,439
CSB-82-135-IFE	80	13.5	3	208	25-1/2	60-1/4	1.85	280	7,491
CSB-82-15-IFE	80	15	3	208	25-1/2	60-1/4	1.85	280	7,491
CSB-82-18-IFE	80	18	3*	208	25-1/2	60-1/4	1.85	280	7,559
CSB-82-24-IFE	80	24	6	208	25-1/2	60-1/4	1.85	280	8,656
CSB-82-27-IFE	80	27	6	208	25-1/2	60-1/4	1.85	280	8,828
CSB-82-30-IFE	80	30	6	208	25-1/2	60-1/4	1.85	280	8,926
CSB-82-36-IFE	80	36	6*	208	25-1/2	60-1/4	1.85	280	8,952
CSB-82-405-IFE	80	40.5	9	208	25-1/2	60-1/4	1.85	280	10,200
CSB-82-45-IFE	80	45	9	208	25-1/2	60-1/4	1.85	280	10,206
CSB-82-54-IFE	80	54	9	208	25-1/2	60-1/4	1.85	280	10,351
CSB-120-12-IFE	119	12.3	3	208	29-1/2	62-1/4	2.08	390	8,556
CSB-120-135-IFE	119	13.5	3	208	29-1/2	62-1/4	2.08	390	8,608
CSB-120-15-IFE	119	15	3	208	29-1/2	62-1/4	2.08	390	8,608
CSB-120-18-IFE	119	18	3*	208	29-1/2	62-1/4	2.08	390	8,676
CSB-120-24-IFE	119	24	6	208	29-1/2	62-1/4	2.08	390	9,773
CSB-120-27-IFE	119	27	6	208	29-1/2	62-1/4	2.08	390	9,944
CSB-120-30-IFE	119	30	6	208	29-1/2	62-1/4	2.08	390	10,043
CSB-120-36-IFE	119	36	6*	208	29-1/2	62-1/4	2.08	390	10,069
CSB-120-405-IFE	119	40.5	9	208	29-1/2	62-1/4	2.08	390	11,317
CSB-120-45-IFE	119	45	9	208	29-1/2	62-1/4	2.08	390	11,322
CSB-120-54-IFE	119	54	9	208	29-1/2	62-1/4	2.08	390	11,468

*208 volt models may use three additional elements. 54 kW not available in 208 single phase.

For 277 and 480 volt, add \$51.00 to the distributor price. For ASME tank construction, add \$413.00 to the above prices

and "A" to the model number. Shipping weight will increase 50 pounds with ASME construction. ASME Models are design certified for a maximum allowable working pressure of 160 PSI. All above prices include a CSA approved and ASME rated T&P relief valve. Field conversion kits allow easy change of voltage and kW inputs.

This product is considered standard and qualifies for the commercial program.

Plant of manufacture: McBee, South Carolina

Model Number	Loading Percentage 53'	Full Truck Load 53'	Voltage	Model Number Suffix	Price Each
CSB-52	1.00	100	208	X	—
CSB-82	2.08	48	277	Y	\$51
CSB-120	2.22	45	480	B	51

Sandblaster electric models are available in standard and ASME tank construction as well as 208, 240, 277 and 480 volt. 277V models are single phase only. When ordering please specify total kW.

COMMERCIAL ELECTRIC

STATESMAN® PREMIUM HEAVY-DUTY ASME AND NSF CONSTRUCTION

3-Year Limited Warranty

Model Number	Gallon Capacity	kW Input	Number of Elements	Recovery @ 100°F Rise Gallon Per Hour	Dimensions in Inches		Load Factor	Approx. Shipping Weight (lbs)	List Price
					Height	Diameter			
SSE-5-3A	5	3	1	12	22	16		82	\$6,346
SSE-10-3A	10	3	1	12	20-1/8	18		116	6,612
SSE-10-6A	10	6	1	25	28-1/8	18		116	6,923
SSE-20-3A	20	3	1	12	31-3/4	22		145	6,912
SSE-20-6A	20	6	1	25	31-3/4	22		145	7,223
SSE-20-9A	20	9	1	37	31-3/4	22		145	7,742
SSE-20-12A	20	12	1	49	31-3/4	22		145	8,054
SSE-20-15A	20	15	1	61	31-3/4	22		145	8,365
SSE-20-18A	20	18*	1	74	31-3/4	22		145	8,676
SSE-30-12A	30	12.3	1	49	43-1/4	22	0.76	218	8,190
SSE-3015A	30	15	1	61	43-1/4	22	0.76	218	8,501
SSE-30-18A	30	18*	1	74	43-1/4	22	0.76	218	8,813
SSE-30-24A	30	24	2	98	43-1/4	22	0.76	218	11,092
SSE-40-12A	40	12.3	1	49	54-3/4	22	1.52	245	8,486
SSE-40-15A	40	15	1	61	54-3/4	22	1.52	245	8,796
SSE-40-18A	40	18*	1	74	54-3/4	22	1.52	245	9,107
SSE-40-24A	40	24	2	98	54-3/4	22	1.52	245	11,388
SSE-40-30A	40	30	2	123	54-3/4	22	1.52	245	12,424
SSE-40-36A	40	36**	2	148	54-3/4	22	1.52	245	13,461
SSE-50-12A	50	12.3	1	49	66-1/5	22	1.52	291	9,733
SSE-50-15A	50	15	1	61	66-1/5	22	1.52	291	10,043
SSE-50-18A	50	18*	1	74	66-1/5	22	1.52	291	10,353
SSE-50-24A	50	24	2	98	66-1/5	22	1.52	291	12,634
SSE-50-30A	50	30	2	123	66-1/5	22	1.52	291	13,671
SSE-50-36A	50	36*	2	148	66-1/5	22	1.52	291	14,708
SSE-50-45A	50	45	3	184	66-1/5	22	1.52	291	16,573
SSE-50-54A	50	54+	3	221	66-1/5	22	1.52	291	17,403
SSE-50-60A	50	60+	4	246	66-1/5	22	1.52	291	20,306
SSE-50-75A	50	75‡	5	307	66-1/5	22	1.52	291	24,038
SSE-50-90A	50	90‡	5	369	66-1/5	22	1.52	291	30,257
SSE-65-12A	65	12.3	1	49	57-1/4	26-1/2	1.85	344	10,761
SSE-65-15A	65	15	1	61	57-1/4	26-1/2	1.85	344	11,072
SSE-65-18A	65	18*	1	74	57-1/4	26-1/2	1.85	344	11,384
SSE-65-24A	65	24	2	98	57-1/4	26-1/2	1.85	344	14,255
SSE-65-30A	65	30	2	123	57-1/4	26-1/2	1.85	344	14,701

+Not available in 208V single phase.

‡Single phase available in 480V only.

*For single phase, except 208V, add \$69.

** Not available in 208 volt.

NOTE: For international voltages 346, 380, 415, 550 or 600, add \$69 to price.

This product is considered specialty and does NOT qualify for the commercial program.

Plant of manufacture: McBee, South Carolina

STATESMAN® PREMIUM HEAVY-DUTY ASME AND NSF CONSTRUCTION *(Continued)*

3-Year Limited Warranty

Model Number	Gallon Capacity	kW Input	Number of Elements	Recovery @ 100°F Rise Gallon Per Hour	Dimensions in Inches		Load Factor	Approx. Shipping Weight (lbs)	List Price
					Height	Diameter			
SSE-65-36A	65	36*	2	148	57-1/4	26 1/2	1.85	344	\$15,738
SSE-65-45A	65	45	3	184	57-1/4	26 1/2	1.85	344	17,603
SSE-65-54A	65	54+	3	221	57-1/4	26 1/2	1.85	344	18,433
SSE-65-60A	65	60+	4	246	57-1/4	26 1/2	1.85	344	21,336
SSE-65-75A	65	75‡	5	307	57-1/4	26 1/2	1.85	344	25,068
SSE-65-90A	65	90‡	5	369	57-1/4	26 1/2	1.85	344	31,287
SSE-80-12A	80	12.3	1	49	58-1/8	28	1.96	406	11,664
SSE-80-15A	80	15	1	61	58-1/8	28	1.96	406	11,976
SSE-80-18A	80	18*	1	74	58-1/8	28	1.96	406	12,287
SSE-80-24A	80	24	2	98	58-1/8	28	1.96	406	14,566
SSE-80-30A	80	30	2	123	58-1/8	28	1.96	406	15,603
SSE-80-36A	80	36*	2	148	58-1/8	28	1.96	406	16,640
SSE-80-45A	80	45	3	184	58-1/8	28	1.96	406	18,507
SSE-80-54A	80	54+	3	221	58-1/8	28	1.96	406	19,336
SSE-80-60A	80	60+	4	246	58-1/8	28	1.96	406	22,238
SSE-80-75A	80	75‡	5	307	58-1/8	28	1.96	406	25,970
SSE-80-90A	80	90‡	5	369	58-1/8	28	1.96	406	32,190
SSE-100-15A	100	15	1	61	70-1/4	28	1.96	419	13,183
SSE-100-18A	100	18*	1	74	70-1/4	28	1.96	419	13,493
SSE-100-24A	100	24	2	98	70-1/4	28	1.96	419	15,774
SSE-100-30A	100	30	2	123	70-1/4	28	1.96	419	16,810
SSE-100-36A	100	36*	2	148	70-1/4	28	1.96	419	17,846
SSE-100-45A	100	45	3	184	70-1/4	28	1.96	419	19,714
SSE-100-54A	100	54+	3	221	70-1/4	28	1.96	419	20,543
SSE-100-60A	100	60+	4	246	70-1/4	28	1.96	419	23,445
SSE-100-75A	100	75‡	5	307	70-1/4	28	1.96	419	27,176
SSE-100-90A	100	90‡	5	369	70-1/4	28	1.96	419	33,398
SSE-120-15A	120	15	1	61	70-1/4	31-1/8	2.08	453	13,933
SSE-120-18A	120	18*	1	74	70-1/4	31-1/8	2.08	453	14,245
SSE-120-24A	120	24	2	98	70-1/4	31-1/8	2.08	453	16,526
SSE-120-30A	120	30	2	123	70-1/4	31-1/8	2.08	453	17,561
SSE-120-36A	120	36*	2	148	70-1/4	31-1/8	2.08	453	18,598
SSE-120-45A	120	45	3	184	70-1/4	31-1/8	2.08	453	20,464
SSE-120-54A	120	54+	3	221	70-1/4	31-1/8	2.08	453	21,294
SSE-120-60A	120	60+	4	246	70-1/4	31-1/8	2.08	453	24,196
SSE-120-75A	120	75‡	5	307	70-1/4	31-1/8	2.08	453	27,929
SSE-120-90A	120	90‡	5	369	70-1/4	31-1/8	2.08	453	34,148

+Not available in 208V single phase.

‡Single phase available in 480V only.

*For single phase, except 208V, add \$69.

NOTE: For international voltages 346, 380, 415, 550 or 600, add \$69 to price.

This product is considered specialty and does NOT qualify for the commercial program.

Plant of manufacture: McBee, South Carolina

(Continued)

STATESMAN® PREMIUM HEAVY-DUTY ASME AND NSF CONSTRUCTION *(Continued)*

3-Year Limited Warranty

OPTIONAL EQUIPMENT AND CONSTRUCTION

Option	List Price
Modulating Control	\$761
Handhole Cleanout	413
Combination T&P Gauge	180
Alarm Horn	625
POWER CIRCUIT FUSING (SUBDIVIDED INTO 48 AMP OR LESS CIRCUITS)	
3, 6, 9, 12, 15 and 18 kW	161
24, 30 and 36 kW	333
45 AND 54 kW	490
60, 75 and 90 kW	668

Statesman Electric Water Heater Model Number Break Down



COMMERCIAL ELECTRIC

LARGE VOLUME ELECTRIC ASME SEV MODELS (VERTICAL) SEH MODELS (HORIZONTAL)

Heaters will be furnished with standard wattages unless otherwise specified. For wattages other than standard, price available on request. All heaters can be furnished in single or three phase. **Please specify voltage and phase when ordering.**

ASME VERTICAL (SEV) AND HORIZONTAL* (SEH) MODELS						
Gallon	150 - Gallon Short		200 - Gallon		250 - Gallon	
Weight	800 to 900 lbs		900 to 1,000 lbs		1,050 to 1,250 lbs	
kW	208/240V	480V	208/240V	480V	208/240V	480V
15	\$25,461	\$24,323	\$26,675	\$25,790	\$27,466	\$26,682
18	25,636	24,581	26,826	26,032	27,627	26,854
30	26,310	25,306	27,445	26,629	28,333	27,816
36	26,886	25,676	27,958	27,002	29,153	28,203
45	27,533	26,286	28,917	28,057	30,355	29,326
54	29,304	26,993	30,836	29,116	32,296	30,580
60	30,560	28,174	32,283	30,192	33,546	31,642
72	31,802	29,358	33,728	31,267	34,797	32,702
90	33,240	30,070	35,172	32,043	36,359	33,411
108	35,659	32,557	37,594	34,373	38,567	35,792
120	36,143	33,083	38,080	34,771	39,043	36,185
135	36,625	33,608	38,566	35,168	39,520	36,575
144	-	-	39,050	35,565	39,994	36,968
162	-	-	42,636	38,119	43,369	39,134
				46,362		47,496
216	-	-	-	-	57,143	50,681

Plant of manufacture: Lebanon, Tennessee

(Continued on next page)

LARGE VOLUME ELECTRIC ASME SEV MODELS (VERTICAL) SEH MODELS (HORIZONTAL)

(Continued)

ASME VERTICAL (SEV) AND HORIZONTAL* (SEH) MODELS

Gallon	300-Gallon		400-Gallon		500-Gallon		600-Gallon		800-Gallon		1000-Gallon	
Weight	1,350 - 1,530 lbs		1,590 - 1,750 lbs		1,700 - 1,860 lbs		2,010 - 2,340 lbs		2,450 - 2,850 lbs		3,160	
kW	208/240V	480V	208/240V	480V	208/240V	480V	208/240V	480V	208/240V	480V	208/240V	480V
15	\$28,141	\$23,387	\$33,712	\$33,462	\$39,179	\$39,190	\$45,674	\$44,126	\$53,114	\$50,313	\$59,634	\$56,949
18	28,353	23,636	33,885	33,613	39,355	39,338	45,858	44,354	53,319	50,466	59,849	57,092
30	\$30,075	\$29,376	\$35,848	\$35,733	\$41,551	\$41,735	\$48,285	\$46,873	\$56,079	\$53,212	60,433	57,901
36	30,548	29,841	36,231	36,073	41,874	42,078	48,619	47,203	56,370	53,542	60,739	58,187
45	31,455	30,988	37,109	37,012	42,736	42,954	49,438	48,216	57,222	54,392	61,438	58,912
54	33,631	32,294	38,962	38,242	44,340	44,038	50,985	49,225	58,907	55,443	62,965	60,152
60	34,882	33,152	40,268	39,057	45,544	44,745	51,990	49,919	60,000	56,178	63,940	60,834
72	36,132	34,028	41,518	39,859	46,747	45,598	52,996	50,612	61,020	56,914	64,914	61,547
90	37,594	34,854	42,885	40,532	48,169	46,213	54,074	51,258	61,964	57,525	65,853	62,151
108	40,021	36,981	45,284	42,288	51,579	47,868	56,354	52,990	63,739	59,214	67,420	64,471
120	40,489	37,301	45,797	42,682	51,894	48,226	56,684	53,311	64,062	59,580	67,709	64,811
135	40,954	37,622	46,308	43,079	52,209	48,600	57,016	53,633	64,401	59,949	68,013	65,171
144	41,422	37,942	46,821	43,474	52,524	48,974	57,346	53,955	64,729	60,325	68,316	65,522
180	54,396	50,658	60,259	56,191	68,825	62,434	61,644	68,435	81,609	74,735	84,358	79,665
216	59,545	54,046	66,070	59,483	73,557	66,294	79,622	71,739	86,848	78,463	89,852	82,986
234	62,937	57,175	69,642	62,776	77,951	69,544	83,498	75,259	91,320	81,841	94,316	86,290
252	64,873	59,404	71,839	64,714	80,148	71,205	85,657	76,941	92,920	83,408	96,525	87,774
270	66,605	61,291	73,743	66,292	82,382	72,839	87,904	78,615	94,445	85,106	98,721	89,441
288	-	-	75,045	72,532	83,743	74,308	89,832	80,500	96,315	87,033	100,743	91,227
306	-	-	76,574	74,280	86,218	76,184	91,802	82,126	97,835	88,718	102,610	92,908
324	-	-	82,080	77,210	91,204	79,510	96,759	85,446	102,752	91,925	107,056	95,886
342	-	-	-	-	92,974	83,485	98,461	87,796	104,690	93,579	109,131	97,525
360	-	-	-	-	94,744	86,824	100,164	89,312	106,627	95,090	111,205	99,165
378	-	-	-	-	97,508	89,429	102,986	92,678	109,399	96,741	113,392	101,062
396	-	-	-	-	100,273	92,762	-	-	112,169	98,392	115,578	102,959
414	-	-	-	-	101,902	94,580	-	-	113,790	100,109	117,764	104,957
432	-	-	-	-	103,532	96,399	-	-	115,410	101,827	119,948	106,236

NOTE: Models 1,000 through 2,500 gallon storage capacity, consult factory for prices.

FOR VERTICAL MODELS: The gallon capacity is preceded by SEV and followed by the desired kW listed at the end of the model number. Example: the vertical 500 gallon tank with 120 kW would have a model number "SEV 500-120."

FOR HORIZONTAL MODELS: The gallon capacity is preceded by SEH and followed by the desired kW listed at the end of the model number. Example: the horizontal 500 gallon tank with 120 kW would have a model number of "SEH 500-120."

*NOTE: Prices shown are for vertical (SEV) models. See optional equipment for horizontal (SEH) add-on. This product is considered specialty and does NOT qualify for the commercial program.

Plant of manufacture: Lebanon, Tennessee

LARGE VOLUME ELECTRIC ASME SEV MODELS (VERTICAL) SEH MODELS (HORIZONTAL)

ASME ORDERING INFORMATION – 125 THRU 5,000 GALLON SYSTEMS

Specifications for the system should include the following information:

1. Model number
2. Gallon capacity
3. Wattage in kilowatts
4. Voltage and Phase – number and size of power leads per phase, diameter and number of conduits should be noted on high kW units.
5. List all desired options.

OPTIONAL EQUIPMENT AND CONSTRUCTION

Option	List Price
Horizontal Construction	
150 thru 400 gallon add	\$2,080
500 thru 700 gallon add	2,478
800 thru 1000 gallon add	2,616
1250 gallon add	2,704
1500 gallon add	2,874
2000 gallon add	3,074
2500 gallon add	3,280
ASME 150 OR 160 PSI CONSTRUCTION	
150 gallon add	\$481
200 gallon add	676
250 gallon add	757
300 gallon add	1037
400 gallon add	1077
500 gallon add	1105
600 gallon add	1291
800 gallon add	2370
1000 gallon add	2546
1250 gallon add	2868
1500 gallon add	5875
2000 gallon add	7893
2500 gallon add	10263
2" dial-type temperature gauge	206
2" dial-type pressure gauge	206
Alarm, Bell or Horn	394
Secondary Heat Source	Consult Factory
Water to Water or Steam to Water Heating Coil	Consult Factory
Safety Door Interlock	545
12" x 16" Manhole (Std on 800-gallon and larger)	687

Option	Net Distributor Price
Optional Corrosion Protection Linings - Cement	
250 thru 500-gallons (incl. 12" x 16" manhole)	Consult Factory
600 thru 800-gallons	Consult Factory
1000 thru 1500-gallons	Consult Factory
Shunt Trip Circuit Breaker	Consult Factory

STORAGE TANKS

5-Year Limited Warranty

Standard Equipment

- Anode rods
- Threaded leg sockets on 140 to 400 gallon tanks
- Prime coated exterior of alkyl type paint
- “UVG” Tanks are factory stock tanks and are not available with special/custom tank openings or options. See State’s Custom Tanks that can be built to your specifications

COMMERCIAL STORAGE TANKS

STORAGE TANKS - VERTICAL OR HORIZONTAL INSTALLATION

Model Number	Nominal Gallon Capacity	Dimensions in Inches		Load Factor	Approx. Shipping Weight (lbs)	Net Distributor Price
		Overall Length	Diameter			
†UVG-0080-00VT**	80	62-1/8	20	0.93	170	\$1,630
†UVG-0120-00VT**	119	65	24	1.59	287	2,949
†UVG-0200-00VT**	200	72	30	1.33	468	4,952
†UVG-0350-00VT**	350	87-1/2	36	4.17	695	6,846

STORAGE TANKS - VERTICAL OR HORIZONTAL INSTALLATION ASME CONSTRUCTION - 160 PSI

Model Number	Nominal Gallon Capacity	Dimensions in Inches		Load Factor	Approx. Shipping Weight (lbs)	Net Distributor Price
		OVERALL LENGTH	DIAMETER			
†UVG-0140-00VTA**	140	76-1/4	24	4.35	368	\$4,941
†UVG-0200-00VTA**	200	72	30	5.26	421	5,125
†UVG-0250-00VTA**	250	84	30	6.00	550	6,688
†UVG-0350-00VTA**	350	87-1/2	36	6.25	695	7,606
†UVG-0400-00VTA**	400	97-1/8	36	6.25	775	8,955

This product is not considered specialty and does NOT qualify for VIP.

STORAGE TANKS - VERTICAL INSTALLATION ONLY ASME CONSTRUCTION - 125 PSI

Model Number	Nominal Gallon Capacity	Dimensions in Inches		Approx. Shipping Weight (lbs)	List Price
		OVERALL HEIGHT	DIAMETER		
UVG-0500-00VSA125	500	87	42	763	\$14,127
UVG-0600-00VTA125*	600	88	48	1,193	16,685
UVG-0700-00VTA125*	700	97	48	1,300	18,694
UVG-0750-00VTA125*	750	100	48	1,337	19,935
UVG-1000-00VTA125*	1000	124	48	1,623	23,616
UVG-1250-00VTA125*	1250	128	54	2,100	31,180
UVG-1500-00VTA125*	1500	124	60	2,709	42,135
UVG-1750-00VTA125*	1750	148	60	3,156	47,242
UVG-2000-00VTA125*	2000	121	72	3,397	52,494

This product is considered specialty and does NOT qualify for the commercial program.

STORAGE TANKS - HORIZONTAL INSTALLATION ONLY ASME CONSTRUCTION - 125 PSI

Model Number	Nominal Gallon Capacity	Dimensions in Inches		Approx. Shipping Weight (lbs)	List Price
		OVERALL LENGTH	DIAMETER		
UVG-0500-00HSA125*	500	83	42	763	\$14,127
UVG-0600-00HTA125*	600	84	48	1,193	16,685
UVG-0700-00HTA125*	700	93	48	1,301	18,694
UVG-0750-00HTA125*	750	96	48	1,337	19,935
UVG-01000-00HTA125*	1000	120	48	1,623	23,616

†Models included in Commercial Stocking Program.

This product is considered specialty and does NOT qualify for the commercial program.

Plant of Manufacture:
* Lebanon, Tennessee
** McBee, South Carolina

STORAGE TANKS

5-Year Limited Warranty***

VERTICAL ROUND JACKETED

Model Number	Nominal Gallon Capacity	Dimensions in Inches		Load Factor	Approx. Shipping Weight (lbs)	Net Distributor Price
		Overall Height	Diameter			
†PVG-0080-00VT**	80	63	25-1/4	1.52	236	\$1,564
†PVG-0120-00VT**	119	62	29-3/8	1.96	320	1,731
†PVG-0080-00VTA125**	80	54-7/8	26-1/2	1.59	369	2,816
†PVG-0120-00VTA125**	119	61-3/4	28	1.85	411	3,175
†PVG-0200-00VSA125**	175	77	32	2.94	560	4,928
†PVG-0200-00VTA125**	200	83	36	3.85	612	4,967

VERTICAL ROUND JACKETED ASME - 160 PSI

Model Number	Nominal Gallon Capacity	Dimensions in Inches		Load Factor	Approx. Shipping Weight (lbs)	List Price
		Overall Height	Diameter			
PVG-0140-00VTA125**	140	87	30	3.12	515	\$8,267
PVG-0250-00VTA125**	250	96	36	3.85	900	11,875
PVG-0350-00VTA125**	350	99	42	4.54	1,080	15,729
PVG-0400-00VTA125**	400	105	42	10	1,282	18,635

VERTICAL ROUND JACKETED ASME - 125 PSI

Model Number	Nominal Gallon Capacity	Dimensions in Inches		Load Factor	Approx. Shipping Weight (lbs)	List Price
		Overall Height	Diameter			
PVG-0500-00VSA125	500	91	46	NA	1,800	20,552
PVG-0600-00VTA125*	600	92	52	NA	1,900	22,940
PVG-0700-00VTA125*	700	101	52	NA	2,000	26,439
PVG-0750-00VTA125*	750	104	52	NA	2,485	27,549
PVG-1000-00VTA125*	940	128	52	NA	3,410	33,098

VERTICAL ROUND INSULATED/JACKETED ASME 125 PSI - OPTIMIZED FOR SPLIT SYSTEM HPWH

Model Number	Nominal Gallon Capacity	Dimensions in Inches		Load Factor	Approx. Shipping Weight (lbs)	List Price
		Overall Height	Diameter			
PVHP-0250-00VTA125*	250	99-1/2	40	3.84	1,180	CFFP
PVHP-0500-00VTA125*	450	100	52	9.09	1,726	CFFP
PVHP-0750-00VTA125*	650	136	52	20	2,911	CFFP
PVHP-1000-00VTA125*	850	137	58	25	3,458	CFFP

CFFP = Contact factory for pricing

For use only with Series SHPA, SHPW and SHPM split system heat pump water heaters

*** PVHP series storage tanks carry a limited ten (10) year warranty. Consult the written warranty for complete information.

This product is considered specialty but does NOT qualify for VIP.

VERTICAL SQUARE JACKETED ASME - 125 PSI

Model Number	Nominal Gallon Capacity	Dimensions in Inches		Approx. Shipping Weight (lbs)	List Price
		Overall Height	Depth		
PVG-1250-00VTA125*	1250	133	65	4660	\$46,495
PVG-1500-00VTA125*	1500	129	71	6200	\$55,764
PVG-2000-00VTA125*	2000	125	77	7,400	\$68,501
PVG-2500-00VTA125*	2500	147	83	9,000	\$81,821

HORIZONTAL ROUND JACKETED ASME - 125 PSI

Model Number	Nominal Gallon Capacity	Height/Length/ Diameter (Inches)	Approx. Shipping Weight (lbs)	List Price
PVG-0250-00HTA125*	250	69 x 130 x 60	1,157	\$13,977
PVG-0300-00HTA125*	300	47 x 76 x 40	1,355	17,980
PVG-0400-00HTA125*	400	53 x 76 x 46	1,587	23,247
PVG-0500-00HSA125	500	53 x 87 x 46	1,711	29,598
PVG-0600-00HTA125*	600	59 x 52 x 52	2,053	34,665
PVG-0700-00HTA125*	700	59 x 100 x 52	2,399	38,736
PVG-1000-00HTA125*	1,000	59 x 124 x 52	3,144	51,899

Plant of Manufacture:
 * Lebanon, Tennessee
 ** McBee, South Carolina

STORAGE TANKS

5-Year Limited Warranty

HORIZONTAL SQUARE JACKETED ASME - 125 PSI

Model Number	Nominal Gallon Capacity	Height/Length/ Depth (Inches)	Approx. Shipping Weight (lbs)	List Price
PVG-1250-00HTA125*	1250	69 x 130 x 60	5,126	\$55,620
PVG-1500-00HTA125*	1500	75 x 126 x 66	6,820	66,740
PVG-2000-00HTA125*	2000	81 x 123 x 72	8,140	82,028
PVG-2500-00HTA125*	2500	87 x 144 x 78	9,900	98,011

The above listed tanks are standard stock tanks with standard openings as listed in the spec sheets and are not available with options such as manholes, special openings or other tank options. If such options are desired see State Custom Tanks.

†Models included in Commercial Stocking Program.

This product is considered specialty and does NOT qualify for the commercial program.

Plant of Manufacture:
* Lebanon, Tennessee
** McBee, South Carolina

ASME CONSTRUCTION – 125 PSI WORKING PRESSURE

Model Number	Nominal Gallon Capacity	Dimensions Diameter x OAL (Inches)	Shipping Weight (lbs.)		List Price	
			Glasslined	Cement	Glasslined	Cement Lined
UGV24-0120-*A125	118	24 x 64	368	–	\$7,026	NA
UGV24-0140-*A125	141	24 x 76	422	–	8,232	NA
UGV24-0200-*A125	188	24 x 100	556	–	8,847	NA
UGV24-0250-*A125	235	24 x 124	684	–	11,039	NA
UGV28-0175-*A125	175	28 x 65	353	–	7,767	NA
UGV28-0200-*A125	200	28 x 76	488	–	8,861	NA
UGV30-0150-*A125	147	30 x 52	400	–	9,360	\$10,780
UGV30-0185-*A125	184	30 x 64	468	–	10,064	11,576
UGV30-0220-*A125	220	30 X 76	548	–	10,480	12,087
UGV30-0250-*A125	257	30 x 87	628	1,103	10,621	12,206
UGV30-0300-*A125	294	30 x 100	701	1,242	11,069	12,753
UGV30-0375-*A125	367	30 x 124	868	1,540	11,120	12,879
UGV36-0275-*A125	265	36 x 64	577	955	10,904	12,556
UGV36-0325-*A125	318	36 x 76	673	1,173	10,983	13,145
UGV36-0400-*A125	370	36 x 87	770	1,343	11,263	13,270
UGV36-0425-*A125	423	36 x 100	866	1,513	11,668	13,476
UGV36-0500-*A125	528	36 x 124	1058	1,861	13,117	15,456
UGV42-0450-*A125	432	42 x 76	795	1,385	12,416	14,614
UGV42-0500-*A125	504	42 x 88	908	1,587	14,543	16,294
UGV42-0600-*A125	576	42 x 100	1,020	1,790	15,480	17,377
UGV42-0750-*A125	720	42 x 124	1,245	2,195	17,472	19,677
UGV42-0900-*A125	864	42 x 148	1,470	2,601	19,174	21,643
UGV42-1000-*A125	1,008	42 x 172	1,695	3,006	21,240	24,028
UGV48-0500-*A125	500	48 X 73	1,058	1,861	17,948	20,202
UGV48-0700-*A125	658	48 x 88	1,346	2,124	18,326	20,662
UGV48-0750-*A125	752	48 x 100	1,507	2,392	18,632	21,018
UGV48-0950-*A125	940	48 x 124	1,828	2,918	22,073	24,991
UGV48-1150-*A125	1,128	48 x 148	2,150	3,444	28,872	32,806
UGV48-1300-*A125	1,315	48 x 172	2,471	3,970	30,385	34,548
UGV54-1000-*A125	951	54 X 100	1,721	1,972	26,950	30,561
UGV54-1200-*A125	1,189	54 x 124	2,083	3,320	29,143	33,095
UGV54-1450-*A125	1,427	54 x 148	2,451	3,919	33,004	37,554
UGV54-1700-*A125	1,665	54 x 172	2,807	3,326	34,515	39,301
UGV54-1900-*A125	1,903	54 x 196	3,168	3,777	38,000	43,326
UGV54-2150-*A125	2,141	54 x 220	3,530	4,228	48,868	55,878
UGV60-1500-*A125	1,469	60 x 172	3,749	4,425	39,382	49,170
UGV60-1750-*A125	1,762	60 x 196	4,231	5,026	44,156	55,207
UGV60-2000-*A125	2,056	60 x 172	3,749	4,425	48,606	60,844
UGV60-2400-*A125	2,350	60 x 196	4,231	5,026	53,517	67,056
UGV60-2650-*A125	2,644	60 x 220	4,713	5,628	58,411	73,247
UGV72-2100-*VA125	2,115	72 x 124	3,416	3,904	43,213	61,246
UGV72-2500-*VA125	2538	72 x 148	3,995	4,627	48,057	68,306
UGV72-3000-*VA125	2961	72 x 172	4,575	5,350	52,157	74,199
UGV72-3400-*VA125	3384	72 x 196	5,154	6,073	54,045	76,914
UGV72-4000-*VA125	3807	72 x 220	5,733	6,795	58,755	83,686

* Specify vertical or horizontal installation by changing the * to V or H in the model number. e.g. UGV2-04000-VA125
This product is considered specialty and does NOT qualify for the commercial program.

(Continued on next page)

STORAGE TANKS *(Continued)*

5-Year Limited Warranty

* Specify vertical or horizontal installation by changing the * to V or H in the model number. e.g. UGV72-04000-VA125

OPTIONS & ACCESSORIES				
Part Number	Diameter	Weight	Shipped Loose	Factory Welded
			Price Per Saddle	Price Per Saddle
100170345	24	12	*	\$332
100170338	28	22	*	360
100170349	30	25	*	374
100170352	36	29	*	420
100170355	42	47	*	626
100170358	48	58	*	686
100170364	54	81	*	772
100170365	60	86	*	1,070
100170371	72	129	*	1,132

NOTE: INSPECTION OPENINGS

Glasslined – Manhole and handhole openings are available as optional features. See Optional Equipment section for price.
Cement Lined – One 12" X 16" manhole standard on 30" diameter and larger.

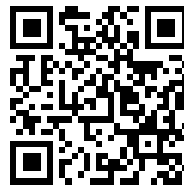
Accessories	Part No.	Adder
125 PSI T&P Relief Valve	100112872	*
150 PSI T&P Relief Valve	100277759	*
Alt. Flange Sizes (A or B Tappings) Pipe Diameter		Per Fitting
3"		*
4"		*
5"		*
6"		*
8"		*
10"		*
12"		*
Additional Tappings NPT		Per Fitting
1"		*
1-1/4"		*
1-1/2"		*
2"		*
2-1/2"		*
3"		*
4"		*

150 PSI WORKING PRESSURE			
Bare	Foam	Jacketed	Adder
24-48"	34-52	250-950	\$1,168
54-60"	58-64	1250-2000	2,280
72"	76	2500	6,612

Description	Approx. Shipping Weight (lbs)	Net Distributor Price
4" x 6" Handhole	7	\$340
12" x 16" Manhole	90	662
Lifting lugs (per pair)		148
vertical interior Baffle		608
Seismic Bracing >250 Gal		318
T&P Gauge		112

Plant of manufacture: Lebanon, Tennessee

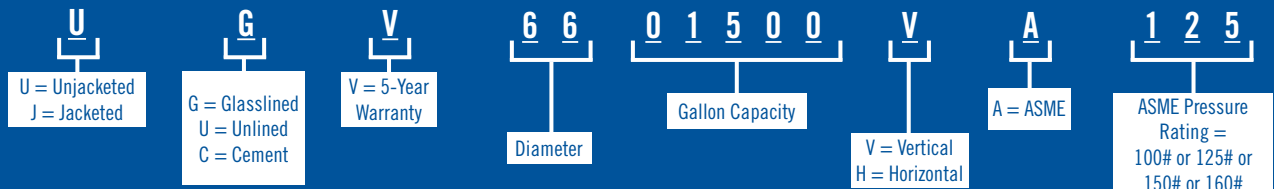
Legs For Foam Horizontal HD Tanks	Adder
34"	\$412
40"	492
46"	884
52"	1030
58"	1,748
64"	1,902
76"	2,162



*For pricing, please visit State: https://www.statewaterheaters.com/State_Parts_List.pdf or scan the QR code below with your phone.

COMMERCIAL STORAGE TANKS

Custom Commercial Storage Tank Model Number Break Down



SPECIAL NOTE: All model numbers appearing on rating plate and carton labels will be compressed.
EXAMPLE: UGV6601500VA125

OPTIONAL: Solar Storage Tank Configuration.
No addition charge for standard solar tank openings.
Consult Factory for additional or custom tank opening pricing.

CUSTOM STORAGE TANKS ADDER – FOR FACTORY JACKET AND INSULATION

INSULATION – The entire tank is surrounded with high-density fiberglass insulation to reduce costly heat loss. Storage tanks meet R12.5 minimum thermal insulation requirements of the U.S. Department of Energy and current edition of ASHRAE/ IES 90.1. The increased depth of the insulation cavity requires use of remote bulb-type tank temperature control and thermometer.

CABINET – Heavy gauge steel with high quality powdercoat paint provides additional insulating qualities for greater energy savings. ADDS 6” to diameter of the tank.

The following prices are adders for Factory Jacketed & Insulation through 1,000 gallon capacity (for tanks larger than 1,000 gallons, consult factory).

VERTICAL		
Vertical Gallon Capacity	Additional Weight (lbs)	List Price
80 – 125	148	\$1,472
140 – 199	191	2000
200 – 349	244	2,676
350 – 399	260	4,912
400 – 499	709	7,454
500 – 749	813	10,464
750 – 999	1665	14,602
1000 – 1499	1976	18,264
1500 - 1749	2165	20,910
1750 – 2000	2620	25,058

For Jacketed pricing above 1,000 gallons - please contact factory.
This product is considered specialty and does NOT qualify for the commercial program.

HORIZONTAL		
Horizontal Gallon Capacity	Additional Weight (lbs)	List Price*
200 – 349	515	\$5,614
350 – 399	550	6,946
400 – 499	675	8,732
500 – 749	1288	12,003
750 – 999	1605	16,594
1000 – 1550	2030	20,574
1500 - 1749	2290	23,990
1750 – 2000	2942	26,944

*Horizontal pricing includes saddles

OUTDOOR FOAM	
Gallon Capacity	Net Distributor Price
120	\$1,038
140 - 199	1,558
200 - 325	1818
326 - 399	2,596
400 - 499	2,858
500 - 749	3,116
750 - 999	3,378
1000 - 1250	4,676

NOTE: Minimum foam insulation thickness is 2.” Since tank is hand sprayed, insulation thickness may be greater in some areas, giving the finished tank an uneven but watertight surface.

PUMP MATE® DIAPHRAGM PUMP TANKS PRE-PRESSURIZED FREE STANDING

5-Year Limited Warranty

PLASTIC BASE						
Model Number	PSI Working Pressure	Diameter (in)	Height (in)	Load Factor	Approx. Shipping Weight (lbs)	Net Distributor Price
SPMD-14	100	15-3/8	24-3/4	0.11	25.5	\$422
SPMD-20	100	15-3/8	32-3/4	0.14	30	364
SPMD-31	100	15-3/8	45-1/2	0.21	40	538
SPMD-36-S	100	20	32-3/8	0.27	45	571
SPMD-52	100	23-3/8	38-5/8	0.48	77	825
SPMD-86	100	23-3/8	59	0.96	105	1,104
SPMD-119	100	26	61-1/4	1.45	165	1,518

IN-LINE SERIES						
Model Number	PSI Working Pressure	Diameter (in)	Height (in)	Load Factor	Approx. Shipping Weight (lbs)	Net Distributor Price
SPMDI-2	100	8-1/4	10-3/16	0.02	5	\$145
SPMDI-5	100	11	14-3/4	0.04	9	\$200
SPMDI-7	100	11	21-1/16	0.05	14	\$330
SPMDI-14	100	15-3/8	23-1/2	0.10	25	\$373

PUMP MATE® HORIZONTAL DIAPHRAGM PUMP TANKS PRE-PRESSURIZED

5-Year Limited Warranty

Model Number	PSI Working Pressure	Diameter (in)	Height (in)	Length (in)	Load Factor	Approx. Shipping Weight (lbs)	Net Distributor Price
SPMDH 7	100	11	12-7/8	21-1/8	0.06	16	\$300
SPMDH 14	100	15-3/8	17-3/8	21-3/4	0.10	26	530
SPMDH 20	100	15-3/8	17-3/8	27-1/8	0.14	30	571

PUMP TANK ACCESSORIES		
Part Number	Description	List Price
100290594	Universal Motor Mount Bracket	\$48

Pump and expansion tanks **DO NOT** qualify for the unloading allowance.
 Pump and expansion tanks **DO** qualify for total truckload volume.
 Place order for the above parts with the Parts Department at 800-821-2017

COMMERCIAL & RESIDENTIAL PUMP TANKS

STATE SELECT® HEAVY-DUTY GLASS LINED STORAGE TANKS

5-Year Limited Warranty

Model Number	PSI Working Pressure	Diameter (in)	Height (in)	Load Factor	Approx. Shipping Weight (lbs)	Net Distributor Price
G-42-T4	125	16-1/2	49	0.28	71	\$420
G-42-S4	125	20	35-7/8	0.30	81	443
G-82-4	125	20	62-1/4	0.83	154	720
G-120-4	125	24	63	1.67	206	927

GALVANIZED STORAGE TANKS

1-Year Limited Warranty

Model Number	PSI Working Pressure	Diameter (in)	Height (in)	Load Factor	Approx. Shipping Weight (lbs)	Net Distributor Price
Z-12	75	12	26-1/2	0.06	27	\$349
Z-21	75	16	26-7/8	0.11	45	363
Z-32	75	16	38-3/4	0.21	52	390
ZT-42	75	16	51	0.21	71	393
ZS-42	75	20	33-5/8	0.25	71	440
Z-82	75	20	63	0.81	114	655
Z-120	75	24	64-1/2	0.10	154	863
Z-220	75	30	78	1.67	303	2,085
Z-315	75	36	79-1/2	2.22	416	2,799
Z-480-S	75	42	87	3.57	640	3,679
*ZU-525	75	36	131	4.55	685	4,013
*ZU-900	75	42	161	8.33	1040	7,754

*ZU models are universal and can be installed horizontally or vertically.
 Pump and expansion tanks **DO NOT** qualify for the unloading allowance.
 Pump and expansion tanks **DO** qualify for total truckload volume.

THERM-O-FLEX™ EXPANSION TANKS FOR RESIDENTIAL SPACE HEATING

(Not for use with potable water heating systems)

1-Year Limited Warranty

- In-line series

Model Number	PSI Working Pressure	Diameter (in)	Height (in)	Load Factor	Approx. Shipping Weight (lbs)	Net Distributor Price
ET-2	100	8-1/4	10-3/16	0.02	5	\$70
ET-5	100	11	14-3/4	0.03	9	84
ET-7	100	11	21-1/16	0.04	14	161
ET-14	100	15-3/8	23-1/2	0.09	25	219

THERM-O-FLEX™ EXPANSION TANKS – COMBINATION UNITS FOR RESIDENTIAL SPACE HEATING

(Not for use with potable water heating systems)

1-Year Limited Warranty

- Includes expansion tank (same as above)

Model Number	PSI Working Pressure	Diameter (in)	Height (in)	Load Factor	Approx. Shipping Weight (lbs)	Net Distributor Price
ET-5V-1	100	11	22-3/4	0.04	13	\$126
ET-5V-2	100	11	22-3/4	0.04	13	126
ET-7V-1	100	11	29-1/8	0.05	16	196
ET-7V-2	100	11	29-1/8	0.05	16	196

THERM-O-FLEX™ EXPANSION TANKS FOR COMMERCIAL SPACE HEATING

(Not for use with potable water heating systems)

1-Year Limited Warranty

- Free standing series

Model Number	PSI Working Pressure	Diameter (in)	Height (in)	Loading Percent 53'	Load Factor	Net Distributor Price
ET-15	100	15-3/8	24-3/4	0.07	0.10	\$253
ET-20	100	15-3/8	32-3/4	0.01	0.14	277
ET-52	100	23-3/8	38-5/8	0.34	0.48	691
ET-86	100	23-3/8	59	0.53	0.96	864

Pump and expansion tanks **DO NOT** qualify for the unloading allowance.
 Pump and expansion tanks **DO** qualify for total truckload volume.

WATERGUARD™ EXPANSION TANKS FOR POTABLE WATER

5-Year Limited Warranty

- In-line series

Model Number	PSI Working Pressure	Diameter (in)	Height (in)	Load Factor	Approx. Shipping Weight (lbs)	Net Distributor Price
ETC-10-X	150	15-3/8	15-1/2	0.05	18	\$275

WATERGUARD™ EXPANSION TANKS FOR POTABLE WATER

5-Year Limited Warranty

- In-line series, models ETC 7; ETC 14, 3/4" MPT
- ETC 52 to ETC 86 1-1/4" FPT
- Free standing series, models ETC 15 to ETC 36, 1" FPT

Model Number	PSI Working Pressure	Diameter (in)	Height (in)	Load Factor	Approx. Shipping Weight (lbs)	Net Distributor Price
ETC-15	100	15-3/8	24-3/4	0.10	25.5	\$334
ETC-20	100	15-3/8	32-3/4	0.14	30	402
ETC-36-S	100	20	32-3/8	0.27	45	511

TW SERIES EXPANSION TANKS FOR POTABLE WATER

5-Year Limited Warranty

Model Number	PSI Working Pressure	Diameter (in)	Height (in)	Load Factor	Approx. Shipping Weight (lbs)	Net Distributor Price
TW-5-5	150	7.9	11	0.04	5	\$39.09
TW-12-5	150	10.6	13.7	0.06	9	\$51.15

Pump and expansion tanks **DO NOT** qualify for the unloading allowance.
 Pump and expansion tanks **DO** qualify for total truckload volume.

TW SERIES EXPANSION TANKS FOR POTABLE WATER

1-Year Limited Warranty

Model Number	PSI Working Pressure	Diameter (in)	Height (in)	Load Factor	Approx. Shipping Weight (lbs)	Net Distributor Price
TW-5-1	150	7.9	11	0.04	5	\$29.91
TW-12-1	150	10.6	13.7	0.06	9	\$43.34

Pump and expansion tanks **DO NOT** qualify for the unloading allowance.
 Pump and expansion tanks **DO** qualify for total truckload volume.

COMMERCIAL STOCKING PROGRAM

COMMERCIAL STOCKING DISCOUNT PRICING APPLIES TO QUALIFYING PRODUCTS ONLY

STOCKING LEVEL DISCOUNTS					Terms
Multiplier Off Book Price	0-11 Units	12-24 units	25-99 units	100+ units	Standard = 2%, 10th Prox., Net 25th
	Book Price	0.95	0.903	0.903*	
COMBINED STOCKING LEVEL ORDER QUANTITY DISCOUNTS					
1-2 units	Book Price	0.95	0.903	0.903	Standard
3-5 units	0.95	0.903	0.858	0.858	Standard
6+ units	0.903	0.858	0.815	0.815	Standard + 30 Days
1 stop fully cubed truckload	0.88	0.836	0.795	0.795	Standard + 90 Days

*Additional quarterly discount available to offset costs of inventory, delivery tools, etc. Contact your sales representative for details.

ZONE SHEET PRICING
Apply the above combined stocking level and order quantity discounts.

NON-QUALIFYING PRODUCTS
Net book pricing. Stocking and order quantity discounts do not apply.

INVOICE PRICE EXAMPLE					Terms
Example using commercial model ABC-199 with a book price of \$5,000					
Stocking Level Discount	0-11 Units	12-24 units	25-99 units	100+ units	Standard = 2%, 10th Prox., Net 25th
Example Book of \$5,000	\$5,000	(x .95) = \$4,750	(x .903) = \$4,515	(x .903) = \$4,515	
ORDER QUANTITY DISCOUNT					
1-2 units	(book) = \$5,000	(x .95) = \$4,750	(x .903) = \$4,515	(x .903) = \$4,515	Standard
3-5 units	(x .95) = \$4,750	(x .903) = \$4,515	(x .858) = \$4,290	(x .858) = \$4,290	Standard
6+ units	(x .903) = \$4,515	(x .858) = \$4,290	(x .815) = \$4,075	(x .815) = \$4,075	Standard + 30 Days
1 stop fully cubed truckload	(x .88) = \$4,400	(x .836) = \$4,180	(x .795) = \$3,975	(x .795) = \$3,975	Standard + 90 Days

Use the above 3-digit multiplier for accurate calculation of your price.

QUALIFYING PRODUCTS

SBS	GPG	UVG 0080-350 00VT	PVG 00800 00VT jacketed, 0080 00VTA 125
SBD	GPV	UVG 0140-0400 00VTA	PVG 0120 00VT jacketed, 0120 00VTA 125
SBL	GPO		PVG 0200 00VTA 125, 0200 00VSA 125
SHE	CSB		STX-199
SDV	PCE		SCI-CRS
SUF	SPC		SPC
			CSHP 120

COMMERCIAL STOCKING PROGRAM

COMMERCIAL FREIGHT POLICY

QUALIFYING PRODUCTS (see models on previous page)

Full freight allowed and no handling charge on standard lead time orders shipped from our factory locations.

FREIGHT WILL BE CHARGED ON ALL ORDERS SHIPPED FROM WAREHOUSE LOCATIONS.

COMMERCIAL QUICK SHIP PROGRAM

FULL FREIGHT ALLOWED

The Commercial Quick Ship Program is available on the models listed below. Under this program, orders placed and confirmed by 3:30P Central will ship from our factory location the following business day. All models ordered under the Commercial Quick Ship Program will be charged the per unit handling charge. Any commercial order with a requested ship date of five days or less will be considered a Commercial Quick Ship order. Please refer to the Commercial Stocking Program for discount multiplier.

To place a Commercial Quick Ship Order email the order to quickship@hotwater.com or call 877-557-5276.

HANDLING CHARGES ON EMERGENCY SHIPMENTS

ORDER QUANTITY

HANDLING CHARGES

1, 2 or 3 Units (3 unit max per order) \$100 per unit

AVAILABLE PRODUCTS

SUF60 120	SBD100 275 (A)	SBL86 310NE**	PCE6 10MSA	PVG 0080 00VT
SUF100 150	SBD65 305 (A)	SBL86 366NE**	PCE10 10MSA	PVG 0120 00VT
SUF100 199	SBD85 365 (A)	SBL86 390NE**	PCE17 10MSA	PVG 0200 00VSA 125
SUF100 250 (A)	SBD100 390 (A)	SBL100 250NEA**	PCE20 10MSA	PVG 0120 00VTA 125
SUF119 300 (A)	SBD85 500 (A)	SBL100 275NEA**	PCE30 20LSA	PVG 0200 00VTA 125
SUF119 400 (A)	SBL81 120NE**	SBL86 310NEA**	PCE40 20LSA	UVG 0250 00VTA 125
SUF119 500(A)	SBL81 154NE**	SBL86 366NEA**	PCE50 20LSA	
SBD71 120	SBL81 180NE**	SBL86 390NEA**	PCE30 20RTA	
SBD81 154	SBL81 199NE**	SBS55 60	PCE40 20RTA	
SBD81 180	SBL100 199NE**	SBS75 76NE	PCE52 20RTA	
SBD81 199	SBL100 250NE**	SBS100 76NE	PCE66 20RTA	
SBD100 199 (A)	SBL100 275NE**	SHE50 76NE**	PCE82 20RTA	
SBD100 250 (A)		SHE50 100NE	PCE120 20RTA	
SBD65 251 (A)		SHE75-100		
GTS-910		CSB 52		
SCT-199I		CSB 82		
SCT-1990		CSB 120		

(A) indicates ASME model included in program.

Natural gas and propane.

CSB standard tank construction only.

**Not available in propane.

DEPARTMENT INFORMATION

HEATER ORDERS

Water Heater Orders Phone: 1-800-519-4099
 Water Heater Orders Fax: 1-800-365-3291
 Water Heater Orders E-mail: RGA/RMAs:
 For Heaters: fggoodsretreq@hotwater.com
 For New and unused Parts:
 partsreturnrequest@hotwater.com

PARTS

Service Parts Orders Phone: 1-800-821-2017
 Service Parts Orders Fax: 1-800-644-9306
 Service Parts Orders E-mail: See diagram for
 your region's email address.
 Customer Support E-mail: contactus@hotwater.com

TECHNICAL SUPPORT

Product Information Phone: 1-800-365-0024
 Product Information Fax: 615-792-2182
 Product information E-mail: help@statewaterheaters.com

(For faster service go to statewaterheaters.com, click on 'Contact Us' and complete the form)

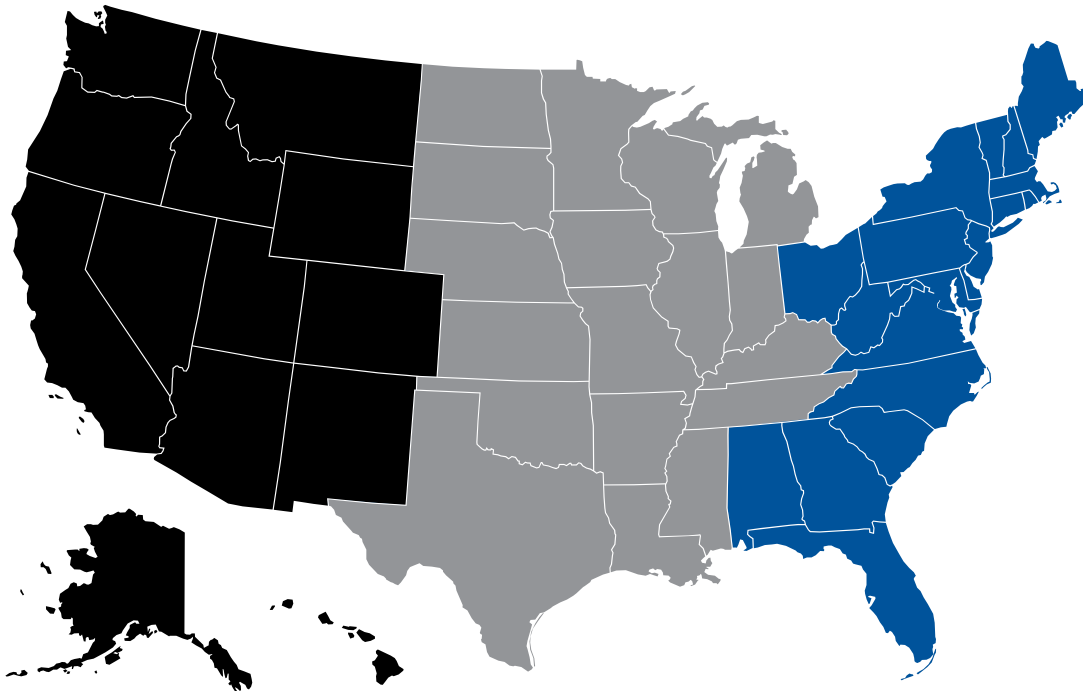
WARRANTY

Warranty Verification Phone: 1-800-365-0024
 Warranty Claims (Distributor Claims Only)
 Fax: 1-615-792-2186
 Warranty Claims E-mail: wdistsupport@hotwater.com

INTERNATIONAL

International Orders Phone: 615-792-6292
 International Orders Fax: 615-792-2147
 International Orders E-mail: dili@hotwater.com

Regional Order Entry Email Addresses		
West	Central	East
■ contactwest@hotwater.com	■ contactcentral@hotwater.com	■ contacteast@hotwater.com



COMMERCIAL FREIGHT POLICY



www.StateWaterHeaters.com