

OCTOBER 2022 NEWSLETTER



Monthly Availability Updates

Lead Times provided are based on Requested Delivery Date, or "RDD." All lead times are approximations. May be influenced by parts and materials availability. Estimates above are provided on new orders.

Cooking:

-BI Ovens (Single 24", 30")	2-4 Months
-BI Ovens (Double)	6-8 Months
-BI Ovens (Combos)	8-10 Months
-BI Ovens (27")	6-8 Months
-Commercial Ranges (30"):	2-4 Months
-Commercial Ranges (36"):	2-4 Months
-Commercial Ranges (48")	6-8 Months
-Cooktops:	3 Months
-Built in Micro Wall Oven:	3 Months
-Slide in Ranges (Electric):	2 Months*
-Slide in Ranges (Gas):	2 Month*
-Slide in Ranges (Dual):	2 Months*
-Hoods & MHC's:	1 Month
-Other Cooking:	2 Months

Refrigeration:

-BI Refrigeration (FDBM):	1 Month
-BI Refrigeration (BM):	1 Month
-BI Refrigeration (SxS):	1 Months**
-Columns:	4-5 Months
-Panel Kits:	2-4 Months
Undercounter:	2 Months
-FS Refrigeration:	1 Months
-Other Refrigeration:	1 Month

Dish:

-Dish:	1 Month
-Trash Compactors:	2 Month

*New Slide in Ranges Open to Ship: December 2022

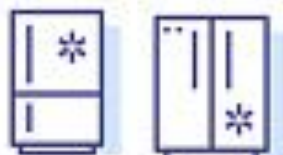
**New BIR SxS Units: Open to Ship October 2022

Updated: 10/17/22

MAXIMIZE YOUR SALE with CURATE

Step 1: Choose your Qualifier

Hot tip! You don't have to start with Cooking! If you like, start with Refrigeration!



Option 1
Built-in Refrigerator
Or
Pair of Columns



Option 2
Built in Oven
+
Cooktop



Option 3
Commercial Range
(Any Size)

Step 2: Choose Your +1 Model

Hot Tip! Why be forced into a dishwasher or vent hood? Choose an additional product that's right for your customer! Up to 13 Categories to choose from (including panel kits!)



Step 3: Take \$1400 or \$2800 off Order total

Hot Tip! Want to double check what qualifies? Check out the All New JennAir Curate Calculator, Available on JennAir.com!

JENNAIR: STONE COLD REBEL

Built in Refrigerator Worksheet



What Styles and Sizes are available?



Bottom Mount

- Flush Mount Only
- Panel Ready Only
- Rise, Noir or Custom
- RH or LH Swing
- 24" and 36" W



French Door Bottom Mount

- Flush Mount Only
- Panel Ready Only
- Rise, Noir or Custom
- 36" and 42" W



Side by Side

- Flush Mount Only
- Panel Ready Only
- Rise, Noir or Custom
- 42" and 48" W



Dispensing Side by Side

- Proud Mount Only
- SS Panels Installed
- Rise Handles
- Universal Cutout
- 42" and 48" W

Face Off! Panel Specifics

- Panel Ready or Panels Included
- Full line of Stainless Steel Panel Options
- Panels with Welded Corners
- Stealthy Full Height Panels
- Mounting: Flush or Proud Options
- One SKU for Panel Kit, all parts included
- Armoire Kits ship with JennAir Panels
- Custom Panels require purchased Armoire Kit

Reasons to Believe

- Manufactured in USA
- Industry First: Daring Obsidian
- Most Glass + Metal
- Quietest Refrigeration in luxury space
- Up to 3 Year Warranty with Certified Installation
- Versatile Installation Options

Uniform Product Features:

FDBM+ BM: Twin Fresh Climate Control System:

Creates two distinct environments, ideal for both fresh and frozen foods, It creates cool, humid air in the refrigerator and produces dry, frigid air in the freezer

SxS: Precision Temperature Management System:

A sensor controlled system that uses a variable speed compressor with an independent sensor in each compartment to monitor and adjust temperatures

Advanced Climate Control Drawer:

Dedicated storage drawer with electronic control which provides precise, independent temperature control for sensitive foods.

Produce Preserver: Crisper + Air System

Delays over-ripening* of fruits and vegetables by absorbing ethylene gas.

Variable Capacity Compressor:

Operates at variable speeds and optimizes cooling by avoiding the abrupt start/stop cycles of single-speed compressors maintaining consistent temps

Powerful Dual Evaporators:

Best temperature management assisted with exclusive controlled air valve. Reduces odor transfer. WET Evaporator enables maximum humidity control.

Refined 'Elegance Shelving':

Glass Shelves accented with brushed aluminum trim to appear to float with an open, refined look, providing enhanced visibility

Multi-Point LED Theatre Lighting:

Multiple LED lights increase visibility and beautifully showcases items against Obsidian Interior, against exclusive Elegance Shelving

LEVEL UP! CURATE

Any BIR purchase qualifies for Curate Rebate. Use \$1400 off second item (Panel Kits, Dish, Hoods, etc)

Accessories:

Model	Panel Kit
JBBFX24NHX	N/A
JB36NXFXLE	JBBFL36NHM/L
JB36NXFXRE	JBBFR36NHM/L
JF36NXFXDE	JBFFS36NHM/L
JF42NXFXDE	JBFFS42NHM/L
JBSFS42NMX	JBSFS42NHM/L
JBSFS48NMX	JBSFS48NHM/L
JBSS42E22L	N/A
JBSS48E22L	N/A

Armoire Kits

- W10663562: 36"
- W10663564: 42"
- W10663565: 48"

COMBO OVEN ALTERNATIVE:

TEXAS COMBO (single oven + microwave w/ trim kit)

**CONTACT YOUR JENNAIR REP TO REQUEST A SUBSTITUTION ON YOUR OPEN ORDER



RISE DESIGN EXPRESSION

JMC1116AS

Stainless Steel 22" Built-In/Countertop Microwave Oven

MK2160AS

30 in. Microwave Trim Kit for 1.6 cu. ft. Countertop Microwave Oven

JJW2430LL

RISE™ 30" Single Wall Oven

NOIR DESIGN EXPRESSION

JMC1116AS

Stainless Steel 22" Built-In/Countertop Microwave Oven

MK2160AS

30 in. Microwave Trim Kit for 1.6 cu. ft. Countertop Microwave Oven

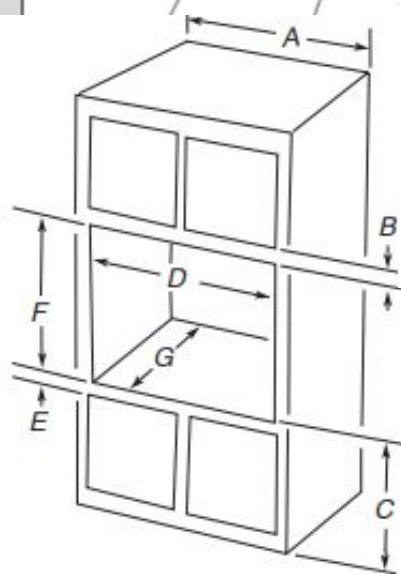
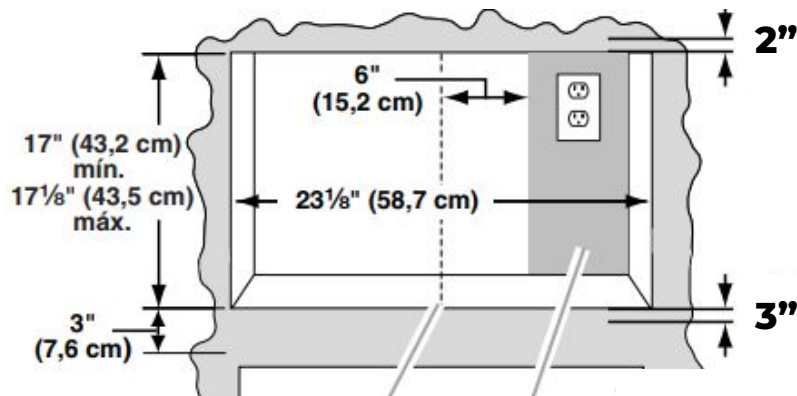
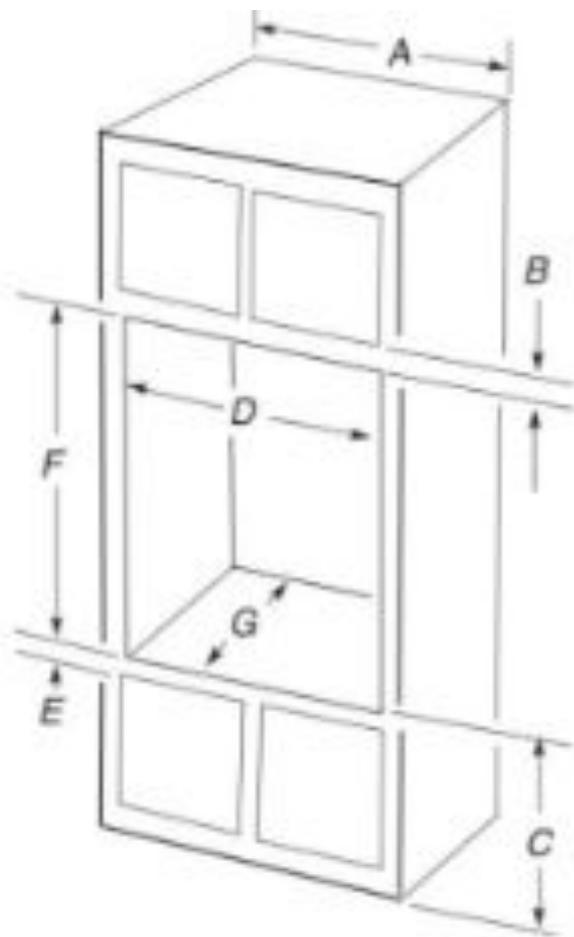
JJW2430LM

NOIR™ 30" Single Wall Oven

CABINET CUTOUT REQUIREMENTS

COMBO WALL OVEN CUTOUT

TEXAS COMBO CUTOUT



30" (76.2 cm) models

- A. 30" (76.2 cm) minimum cabinet width
- B. 2 1/4" (5.7 cm) top of cutout to bottom of upper cabinet door
- C. 19 1/4" (48.9 cm) bottom of cutout to floor is recommended.
7"-19 1/4" (17.8-48.9 cm) bottom of cutout to floor is acceptable.
- D. 28 1/2" (72.4 cm) minimum cutout width
- E. 1 1/2" (3.8 cm) minimum bottom of cutout to top of cabinet door
- F. 41 5/16" (105 cm)* recommended cutout height
- G. 24" (60.7 cm) cutout depth

30" (76.2 CM) MODELS

- A. 30" (76.2 cm) min.cabinet width
- B. 3" top of cutout to bottom of microwave cutout
- C. 32" (81.3 cm) bottom of cutout to floor
- D. 28-1/2" (72.4 cm) cutout width
- E. 1-1/2" (3.8 cm) min. bottom of cutout to top of cabinet door
- F. 28" (71.2 cm)* recommended cutout height
- G. 24" (60.7 cm) cutout depth

*NOTE: The cutout height can be between 27-1/4" (69.2 cm) and 29-7/16" (74.8 cm) for 30" single ovens.

JENNAIR *HELPFUL CONTACT INFORMATION*

JennAir Customer Care

1-800-JENNAIR (1-800-536-6247)

customer care@jennair.com

HUB - spiff + rebate inquiries

1-855-458-5446

jennair@whirlpoolhub.com

Order Desk (Retail Availability + Order Status)

1-800-321-7613

ordermanagement@whirlpool.com

Order Desk (Contract Availability + Order Status)

1-800-952-2537

Returns

1-800-952-2537

nar_return_requests@whirlpool.com

Parts

1-844-200-5440

partsexpress@whirlpool.com



[CURATE CALCULATOR](#)

[COLUMN CONFIGURATOR](#)