

TRADE-WIND

Hoods • Liners • Fans

Dealer Pricing Effective August 01, 2022

Builder Schedule Code: TE



4960 Golden Pkwy, Bldg. #3A, Buford, Georgia 30518 • 800.241.9152
www.middlebyresidential.com

August 1, 2022

Table of Contents

INDOOR HOODS INSERTS	3
LINERS	
VSL 400 SERIES LINERS (NEW 19 1/4" DEPTH MODELS)	
VSL 30" Liners	4
VSL 36" Liners	6
VSL 42" Liners	8
VSL 48" Liners	10
VSL 54" Liners	12
VSL 60" Liners	13
VSL 72" Liners	14
BARBECUE (OUTDOOR) VENTILATION	
BARBECUE HOODS	15
P7200 Series BBQ Hoods	
w/ corresponding duct covers	
7200 Series BBQ Hoods- <i>Limited to supplies on hand</i>	15
S7200CD Series BBQ Hoods (Convertible Discharge, Top or Rear)	21
w/ corresponding duct covers for 7200 & S7200CD Series	23
BARBECUE LINERS 7200 SERIES ISLAND HOODS (NEW)	
T-SHAPED BBQ HOODS	
Duct Covers P7200 Series	24
L7200 Series BBQ Liners	25
INDOOR RANGE HOODS	
Slim Line Series - 3000	
w/ corresponding duct covers	27
H3200 Series Range Hoods	28
P3200 Series Range Hoods	30
Duct Covers P3200 Series	31
ACCESSORIES & OPTIONS	
IN-LINE BLOWERS, TRADE-WIND® PRO SERIES	32
IN-LINE DUCT SILENCERS, TRADE-WIND® PRO SERIES	32
FAST CLAMPS, TRADE-WIND® PRO SERIES	32
DAMPERS, TRADE-WIND® PRO SERIES	32
COMMERCIAL BAFFLE FILTERS, TRADE-WIND® PRO SERIES	33
REPLACEMENT REMOTE CONTROL	33
DUCTLESS CONVERSION KIT	33
WARRANTY	34
TYPICAL INSTALLATION & PARTS SELECTION LIST (IN-LINE BLOWERS)	35

INDOOR HOOD INSERTS

HOOD INSERT SERIES

• INDOOR HOOD INSERTS FOR UNDER CABINET INSTALLATION

- Available in 30" and 36" widths (36" model comes with Remote Control)
- 3 Speed Motor Control For Internal Blowers
- LED Light (Bulb Included)
- Full-Filter Bottom using #304 Grade Stainless Steel with brush finish



Model	Color	Description	Approx. Weight	DLR PRICE	BDR	SSP
I32302		30" Insert - 28 3/8" Wide - Internal 290 CFM - 3 Speed Rotary Control For Blower - LED Light (Bulb Included) Equals 50 Watt Halogen - Perforated Stainless Steel Filters - 6" Round Start Collar	28 lbs	\$346	\$494	\$582
I32303		30" Insert - 28 3/8" Wide - Internal 390 CFM - 3 Speed Rotary Control For Blower - LED Light (Bulb Included) Equals 50 Watt Halogen - Perforated Stainless Steel Filters - 7" Round Start Collar	28 lbs	\$363	\$519	\$610
I32362RC		36" Insert - 34 3/8" Wide - Internal 290 CFM - 3 Speed Touch Button Control For Blower and Light, with Remote Control - LED Light (Bulb Included) Equals 50 Watt Halogen - Stainless Steel Baffle Filters - 6" Round Start Collar	32 lbs	\$439	\$628	\$739
I32363RC		36" Insert - 34 3/8" Wide - Internal 390 CFM - 3 Speed Touch Button Control For Blower and Light, with Remote Control - LED Light (Bulb Included) Equals 50 Watt Halogen - Stainless Steel Baffle Filters - 7" Round Start Collar	32 lbs	\$456	\$652	\$767
I32366RC		36" Insert - 34 3/8" Wide - Internal 600 CFM - 3 Speed Touch Button Control For Blower and Light, with Remote Control - LED Light (Bulb Included) Equals 50 Watt Halogen - Stainless Steel Baffle Filters - 8" Round Start Collar	35 lbs	\$521	\$744	\$875



30" VSL (VERY SPECIAL LINERS) for WOOD HOODS

VSL Liners with either INTERNAL Blower or Controls for EXTERNAL Blowers (Roof Top, Wall, or In-Line)

- **NEW Remote Control with optional automatic 5 minute shut off timer**
- INTERNAL BLOWER(S) have Electronic, 3 speed Touch Buttons for Fan and Light Control
- EXTERNAL BLOWER(S) have 5 Amp Variable, Infinite Control for Lights and Blower
- *Ductless Conversion Kits are available for -3 and -4 models only; see Accessories Section*

Model	Color	Description	Approx. Weight	DLR PRICE	BDR	SSP
VSL4302RC	Stainless Steel(1)	28.3/8" wide x 18" deep Wood Hood Liner with a 290 CFM INTERNAL BLOWER - Does NOT require Make Up Air - Electronic, 3 speed Touch button control for Blower and lights, with Remote Control - 2 LED Lights (Bulbs Included) - 2 #304 Grade Stainless Steel Baffle Filters - 6" Round Start Collar	30 lbs	\$456	\$652	\$767
VSL4303RC	Stainless Steel(1)	28.3/8" wide x 19.1/4" deep Wood Hood Liner with a 390 CFM INTERNAL BLOWER - Does NOT require Make Up Air - Electronic, 3 speed Touch button control for Blower and lights, with Remote Control - 2 LED Lights (Bulbs Included) - 2 #304 Grade Stainless Steel Baffle Filters - 7" Round Start Collar	30 lbs	\$456	\$652	\$767
VSL430319RC	Stainless Steel(1)	28.3/8" wide x 18" deep Wood Hood Liner with a 390 CFM INTERNAL BLOWER - Does NOT require Make Up Air - Electronic, 3 speed Touch button control for Blower and lights, with Remote Control - 2 LED Lights (Bulbs Included) - 2 #304 Grade Stainless Steel Baffle Filters - 7" Round Start Collar	30 lbs	\$493	\$705	\$829
VSL4304RC	Stainless Steel(1)	28.3/8" wide x 18" deep Wood Hood Liner with a 390 CFM INTERNAL BLOWER - Does NOT require Make Up Air - Electronic, 3 speed Touch button control for Blower and lights, with Remote Control - 2 LED Lights (Bulbs Included) - 2 #304 Grade Stainless Steel Baffle Filters - 3-1/4" x 10" Rectangle Start Collar	31 lbs	\$456	\$652	\$767
VSL4306RC	Stainless Steel(1)	28.3/8" wide x 18" deep Wood Hood Liner with a 600 CFM INTERNAL BLOWER - Electronic, 3 speed Touch button control for Blower and light. with Remote Control - 2 LED Lights (Bulbs Included) - 2 #304 Grade Stainless Steel Baffle Filters - 8" Round Start Collar	31 lbs	\$623	\$890	\$1,047

All Stainless Steel used by Trade-Wind is #304, #4 Standard Appliance Finish

(1) All visible components are Stainless Steel. Some non-visible parts are G90 Galvanized



30" VSL (VERY SPECIAL LINERS) for WOOD HOODS

VSL Liners with either INTERNAL Blower or Controls for EXTERNAL Blowers (Roof Top, Wall, or In-Line)

- **NEW Remote Control with optional automatic 5 minute shut off timer**
- INTERNAL BLOWER(S) have Electronic, 3 speed Touch Buttons for Fan and Light Control
- EXTERNAL BLOWER(S) have 5 Amp Variable, Infinite Control for Lights and Blower
- *Ductless Conversion Kits are available for -3 and -4 models only; see Accessories Section*

Model	Color	Description	Approx. Weight	DLR PRICE	BDR	SSP
VSL430619RC	Stainless Steel(1)	28.3/8" wide x 19.1/4" deep Wood Hood Liner with a 600 CFM INTERNAL BLOWER - Electronic, 3 speed Touch button control for Blower and light. with Remote Control - 2 LED Lights (Bulbs Included) - 2 #304 Grade Stainless Steel Baffle Filters - 8" Round Start Collar	31 lbs	\$741	\$1,058	\$1,245
VSL430BF	Stainless Steel(1)	28.3/8" wide x 18" deep Wood Hood Liner for EXTERNAL BLOWER (not included) - 5 Amp Variable, Infinite control for external blower - No Remote Control available with external blower - 2 LED Lights (Bulbs Included) - 2 #304 Grade Stainless Steel Baffle Filters - 8" Round Start Collar	21 lbs	\$327	\$468	\$550

All Stainless Steel used by Trade-Wind is #304, #4 Standard Appliance Finish

(1) All visible components are Stainless Steel. Some non-visible parts are G90 Galvanized

LINERS

36" VSL (VERY SPECIAL LINERS) for WOOD HOODS

VSL Liners with either INTERNAL Blower or Controls for EXTERNAL Blowers (Roof Top, Wall, or In-Line)

- **NEW Remote Control with optional automatic 5 minute shut off timer**
- INTERNAL BLOWER(S) have Electronic, 3 speed Touch Buttons for Fan and Light Control
- EXTERNAL BLOWER(S) have 5 Amp Variable, Infinite Control for Lights and Blower
- *Ductless Conversion Kits are available for -3 and -4 models only; see Accessories Section*

Model	Color	Description	Approx. Weight	DLR PRICE	BDR	SSP
VSL4362RC	Stainless Steel(1)	34.3/8" wide x 18" deep Wood Hood Liner with a 290 CFM INTERNAL BLOWER - Does NOT require Make Up Air - Electronic, 3 speed Touch button control for Blower and lights, with Remote Control - 2 LED Lights (Bulbs Included) - 2 #304 Grade Stainless Steel Baffle Filters - 6" Round Start Collar	39 lbs	\$502	\$717	\$844
VSL4363RC	Stainless Steel(1)	34.3/8" wide x 18" deep Wood Hood Liner with a 390 CFM INTERNAL BLOWER - Does NOT require Make Up Air - Electronic, 3 speed Touch button control for Blower and lights, with Remote Control - 2 LED Lights (Bulbs Included) - 2 #304 Grade Stainless Steel Baffle Filters - 7" Round Start Collar	39 lbs	\$502	\$717	\$844
VSL436319RC	Stainless Steel(1)	34 3/8" wide x 19.1/4" deep Wood Hood Liner with a 390 CFM INTERNAL BLOWER - Does NOT require Make Up Air - Electronic, 3 speed Touch button control for Blower and lights, with Remote Control - 2 LED Lights (Bulbs Included) - 2 #304 Grade Stainless Steel Baffle Filters - 7" Round Start Collar	39 lbs	\$615	\$879	\$1,034
VSL4364RC	Stainless Steel(1)	34.3/8" wide x 18" deep Wood Hood Liner with a 390 CFM INTERNAL BLOWER - Does NOT require Make Up Air - Electronic, 3 speed Touch button control for Blower and lights, with Remote Control - 2 LED Lights (Bulbs Included) - 2 #304 Grade Stainless Steel Baffle Filters - 3-1/4" x 10" Rectangle Start Collar	40 lbs	\$502	\$717	\$844
VSL4366RC	Stainless Steel(1)	34.3/8" wide x 18" deep Wood Hood Liner with a 600 CFM INTERNAL BLOWER - Electronic, 3 speed Touch button control for Blower and lights, with Remote Control - 2 LED Lights (Bulbs Included) - 2 #304 Grade Stainless Steel Baffle Filters - 8" Round Start Collar	40 lbs	\$669	\$955	\$1,124
VSL436619RC	Stainless Steel(1)	34.3/8" wide x 19.1/4" deep Wood Hood Liner with a 600 CFM INTERNAL BLOWER - Electronic, 3 speed Touch button control for Blower and lights, with Remote Control - 2 LED Lights (Bulbs Included) - 2 #304 Grade Stainless Steel Baffle Filters - 8" Round Start Collar	40 lbs	\$772	\$1,103	\$1,298
VSL436622RC	Stainless Steel(1)	34.3/8" wide x 22" deep Wood Hood Liner with a 600 CFM INTERNAL BLOWER - Electronic, 3 speed Touch button control for Blower and lights, with Remote Control - 2 LED Lights (Bulbs Included) - 2 #304 Grade Stainless Steel Baffle Filters - 8" Round Start Collar	46 lbs	\$826	\$1,180	\$1,389

All Stainless Steel used by Trade-Wind is #304, #4 Standard Appliance Finish

(1) All visible components are Stainless Steel. Some non-visible parts are G90 Galvanized

August 1, 2022

LINERS

36" VSL (VERY SPECIAL LINERS) for WOOD HOODS

VSL Liners with either INTERNAL Blower or Controls for EXTERNAL Blowers (Roof Top, Wall, or In-Line)

- **NEW Remote Control with optional automatic 5 minute shut off timer**
- INTERNAL BLOWER(S) have Electronic, 3 speed Touch Buttons for Fan and Light Control
- EXTERNAL BLOWER(S) have 5 Amp Variable, Infinite Control for Lights and Blower
- *Ductless Conversion Kits are available for -3 and -4 models only; see Accessories Section*

Model	Color	Description	Approx. Weight	DLR PRICE	BDR	SSP
VSL436BF	Stainless Steel(1)	34.3/8" wide x 18" deep Wood Hood Liner for EXTERNAL BLOWER (not included) - 5Amp Variable, Infinite control for external blower - No Remote Control available with external blower - 2 LED Lights (Bulbs Included) - 2 #304 Grade Stainless Steel Baffle Filters - 8" Round Start Collar	30 lbs	\$375	\$536	\$630
VSL436-0-19-BF	Stainless Steel(1)	34.3/8" wide x 19.1/4" deep Wood Hood Liner for EXTERNAL BLOWER (not included) - 5Amp Variable, Infinite control for external blower - No Remote Control available with external blower - 2 LED Lights (Bulbs Included) - 2 #304 Grade Stainless Steel Baffle Filters - 8" Round Start Collar	30 lbs	\$411	\$587	\$690
VSL436-0-22BF	Stainless Steel(1)	34.3/8" wide x 22" deep Wood Hood Liner for EXTERNAL BLOWER (not included) - 5Amp Variable, Infinite control for external blower - No Remote Control available with external blower - 2 LED Lights (Bulbs Included) - 2 #304 Grade Stainless Steel Baffle Filters - 8" Round Start Collar	31 lbs	\$439	\$628	\$739

42" VSL (VERY SPECIAL LINERS) for WOOD HOODS

VSL Liners with either INTERNAL Blower(s) or Controls for EXTERNAL Blowers (Roof Top, Wall, or In-Line)

- **NEW Remote Control with optional automatic 5 minute shut off timer**
- INTERNAL BLOWER(S) have Electronic, 3 speed Touch Buttons for Fan and Light Control
- EXTERNAL BLOWER(S) have 5 Amp Variable, Infinite Control for Lights and Blower
- *Ductless Conversion Kits are available for -3 and -4 models only; see Accessories Section*

Model	Color	Description	Approx. Weight	DLR PRICE	BDR	SSP
VSL4422RC	Stainless Steel(1)	40.3/8" wide x 18" deep Wood Hood Liner with a 290 CFM INTERNAL BLOWER - Does NOT require Make Up Air - Electronic, 3 speed Touch button control for Blower and lights, with Remote Control - 2 LED Lights (Bulbs Included) - 2 #304 Grade Stainless Steel Baffle Filters - 6" Round Start Collar	42 lbs	\$557	\$795	\$935
VSL4423RC	Stainless Steel(1)	40.3/8" wide x 18" deep Wood Hood Liner with a 390 CFM INTERNAL BLOWER - Does NOT require Make Up Air - Electronic, 3 speed Touch button control for Blower and lights, with Remote Control - 2 LED Lights (Bulbs Included) - 2 #304 Grade Stainless Steel Baffle Filters - 7" Round Start Collar	42 lbs	\$557	\$795	\$935
VSL4424RC	Stainless Steel(1)	40.3/8" wide x 18" deep Wood Hood Liner with a 390 CFM INTERNAL BLOWER - Does NOT require Make Up Air - Electronic, 3 speed Touch button control for Blower and lights, with Remote Control - 2 LED Lights (Bulbs Included) - 2 #304 Grade Stainless Steel Baffle Filters - 3-1/4" x 10" Rectangle Start Collar	43 lbs	\$557	\$795	\$935
VSL4426RC	Stainless Steel(1)	40.3/8" wide x 18" deep Wood Hood Liner with a 600 CFM INTERNAL BLOWER - Electronic, 3 speed Touch button control for Blower and lights, with Remote Control - 2 LED Lights (Bulbs Included) - 2 #304 Grade Stainless Steel Baffle Filters - 8" Round Start Collar	43 lbs	\$709	\$1,013	\$1,192
VSL442619RC	Stainless Steel(1)	40.3/8" wide x 19.1/4" deep Wood Hood Liner with a 600 CFM INTERNAL BLOWER - Electronic, 3 speed Touch button control for Blower and lights, with Remote Control - 2 LED Lights (Bulbs Included) - 2 #304 Grade Stainless Steel Baffle Filters - 8" Round Start Collar	43 lbs	\$794	\$1,135	\$1,335
VSL442622RC	Stainless Steel(1)	40.3/8" wide x 22" deep Wood Hood Liner with a 600 CFM INTERNAL BLOWER - Electronic, 3 speed Touch button control for Blower and lights, with Remote Control - 2 LED Lights (Bulbs Included) - 2 #304 Grade Stainless Steel Baffle Filters - 8" Round Start Collar	49 lbs	\$869	\$1,241	\$1,460
VSL44212RC	Stainless Steel(1)	40.3/8" wide x 18" deep Wood Hood Liner with a 1200 CFM INTERNAL BLOWERS - Electronic, 3 speed Touch button control for Blowers and lights, with Remote Control - 2 LED Lights (Bulbs Included) - 2 #304 Grade Stainless Steel Baffle Filters - 10" Round Start Collar, Welded Transition Included	55 lbs	\$892	\$1,275	\$1,500

All Stainless Steel used by Trade-Wind is #304, #4 Standard Appliance Finish

(1) All visible components are Stainless Steel. Some non-visible parts are G90 Galvanized

42" VSL (VERY SPECIAL LINERS) for WOOD HOODS

VSL Liners with either INTERNAL Blower(s) or Controls for EXTERNAL Blowers (Roof Top, Wall, or In-Line)

- **NEW Remote Control with optional automatic 5 minute shut off timer**
- INTERNAL BLOWER(S) have Electronic, 3 speed Touch Buttons for Fan and Light Control
- EXTERNAL BLOWER(S) have 5 Amp Variable, Infinite Control for Lights and Blower
- *Ductless Conversion Kits are available for -3 and -4 models only; see Accessories Section*

Model	Color	Description	Approx. Weight	DLR PRICE	BDR	SSP
VSL4421219RC	Stainless Steel(1)	40.3/8" wide x 19.1/4" deep Wood Hood Liner with a 1200 CFM INTERNAL BLOWERS - Electronic, 3 speed Touch button control for Blowers and lights, with Remote Control - 2 LED Lights (Bulbs Included) - 2 #304 Grade Stainless Steel Baffle Filters - 10" Round Start Collar, Welded Transition Included	55 lbs	\$982	\$1,402	\$1,650
VSL4421222RC	Stainless Steel(1)	40.3/8" wide x 22" deep Wood Hood Liner with a 1200 CFM INTERNAL BLOWERS - Electronic, 3 speed Touch button control for Blowers and lights, with Remote Control - 2 LED Lights (Bulbs Included) - 2 #304 Grade Stainless Steel Baffle Filters - 10" Round Start Collar, (No Transition Required)	62 lbs	\$1,050	\$1,500	\$1,765
VSL442BF	Stainless Steel(1)	40.3/8" wide x 18" deep Wood Hood Liner for EXTERNAL BLOWER (not included) - 5Amp Variable, Infinite control for external blower - No Remote Control available with external blower - 2 LED Lights (Bulbs Included) - 2 #304 Grade Stainless Steel Baffle Filters - 10" Round Start Collar (No Transition Required)	33 lbs	\$419	\$599	\$704
VSL442-0-19BF	Stainless Steel(1)	40.3/8" wide x 19.1/4" deep Wood Hood Liner for EXTERNAL BLOWER (not included) - 5Amp Variable, Infinite control for external blower - No Remote Control available with external blower - 2 LED Lights (Bulbs Included) - 2 #304 Grade Stainless Steel Baffle Filters - 10" Round Start Collar (No Transition Required)	33 lbs	\$458	\$655	\$770
VSL442-0-22-BF	Stainless Steel(1)	40.3/8" wide x 22" deep Wood Hood Liner for EXTERNAL BLOWER (not included) - 5Amp Variable, Infinite control for external blower - No Remote Control available with external blower - 2 LED Lights (Bulbs Included) - 2 #304 Grade Stainless Steel Baffle Filters - 10" Round Start Collar (No Transition Required)	34 lbs	\$490	\$701	\$824

All Stainless Steel used by Trade-Wind is #304, #4 Standard Appliance Finish

(1) All visible components are Stainless Steel. Some non-visible parts are G90 Galvanized

48" VSL (VERY SPECIAL LINERS) for WOOD HOODS

VSL Liners with either INTERNAL Blower(s) or Controls for EXTERNAL Blowers (Roof Top, Wall, or In-Line)

- **NEW Remote Control with optional automatic 5 minute shut off timer**
- INTERNAL BLOWER(S) have Electronic, 3 speed Touch Buttons for Fan and Light Control
- EXTERNAL BLOWER(S) have 5 Amp Variable, Infinite Control for Lights and Blower
- *Ductless Conversion Kits are available for -3 and -4 models only; see Accessories Section*

Model	Color	Description	Approx. Weight	DLR PRICE	BDR	SSP
VSL4482RC	Stainless Steel(1)	46.3/8" wide x 18" deep Wood Hood Liner with a 290 CFM INTERNAL BLOWER - Electronic, 3 speed Touch button control for Blower and lights, with Remote Control - 3 LED Lights (Bulbs Included) - 3 #304 Grade Stainless Steel Baffle Filters - 6" Round Start Collar	45 lbs	\$696	\$994	\$1,169
VSL4486RC	Stainless Steel(1)	46.3/8" wide x 18" deep Wood Hood Liner with a 600 CFM INTERNAL BLOWER - Electronic, 3 speed Touch button control for Blower and lights, with Remote Control - 3 LED Lights (Bulbs Included) - 3 #304 Grade Stainless Steel Baffle Filters - 8" Round Start Collar	45 lbs	\$818	\$1,168	\$1,374
VSL448619RC	Stainless Steel(1)	46.3/8" wide x 19.1/4" deep Wood Hood Liner with a 600 CFM INTERNAL BLOWER - Electronic, 3 speed Touch button control for Blower and lights, with Remote Control - 3 LED Lights (Bulbs Included) - 3 #304 Grade Stainless Steel Baffle Filters - 8" Round Start Collar	45 lbs	\$885	\$1,264	\$1,487
VSL448622RC	Stainless Steel(1)	46.3/8" wide x 22" deep Wood Hood Liner with a 600 CFM INTERNAL BLOWER - Electronic, 3 speed Touch button control for Blower and lights, with Remote Control - 3 LED Lights (Bulbs Included) - 3 #304 Grade Stainless Steel Baffle Filters - 8" Round Start Collar	46 lbs	\$947	\$1,353	\$1,591
VSL44812RC	Stainless Steel(1)	46.3/8" wide x 18" deep Wood Hood Liner with a 1200 CFM INTERNAL BLOWERS - Electronic, 3 speed Touch button control for Blowers and lights, with Remote Control - 3 LED Lights (Bulbs Included) - 3 #304 Grade Stainless Steel Baffle Filters - 10" Round Start Collar, Welded Transition Included	57 lbs	\$999	\$1,428	\$1,680
VSL4481219RC	Stainless Steel(1)	46.3/8" wide x 19.1/4" deep Wood Hood Liner with a 1200 CFM INTERNAL BLOWERS - Electronic, 3 speed Touch button control for Blowers and lights, with Remote Control - 3 LED Lights (Bulbs Included) - 3 #304 Grade Stainless Steel Baffle Filters - 10" Round Start Collar, Welded Transition Included	57 lbs	\$1,043	\$1,409	\$1,753
VSL4481222RC	Stainless Steel(1)	46.3/8" wide x 22" deep Wood Hood Liner with a 1200 CFM INTERNAL BLOWERS - Electronic, 3 speed Touch button control for Blowers and lights, with Remote Control - 3 LED Lights (Bulbs Included) - 3 #304 Grade Stainless Steel Baffle Filters - 10" Round Start Collar (No Transition Required)	63 lbs	\$1,086	\$1,551	\$1,825

All Stainless Steel used by Trade-Wind is #304, #4 Standard Appliance Finish
 (1) All visible components are Stainless Steel. Some non-visible parts are G90 Galvanized

48" VSL (VERY SPECIAL LINERS) for WOOD HOODS (Continued)

VSL Liners with either INTERNAL Blower(s) or Controls for EXTERNAL Blowers (Roof Top, Wall, or In-Line)

- **NEW Remote Control with optional automatic 5 minute shut off timer**
- INTERNAL BLOWER(S) have Electronic, 3 speed Touch Buttons for Fan and Light Control
- EXTERNAL BLOWER(S) have 5 Amp Variable, Infinite Control for Lights and Blower
- *Ductless Conversion Kits are available for -3 and -4 models only; see Accessories Section*

Model	Color	Description	Approx. Weight	DLR PRICE	BDR	SSP
VSL448BF	Stainless Steel(1)	46.3/8" wide x 18" deep Wood Hood Liner for EXTERNAL BLOWER (not included) - 5Amp Variable, Infinite control for external blower - No Remote Control available with external blower - 3 LED Lights (Bulbs Included) - 3 #304 Grade Stainless Steel Baffle Filters - 10" Round Start Collar (No Transition Required)	36 lbs	\$477	\$681	\$801
VSL448-0-19BF	Stainless Steel(1)	46.3/8" wide x 19.1/4" deep Wood Hood Liner for EXTERNAL BLOWER (not included) - 5Amp Variable, Infinite control for external blower - No Remote Control available with external blower - 3 LED Lights (Bulbs Included) - 3 #304 Grade Stainless Steel Baffle Filters - 10" Round Start Collar (No Transition Required)	36 lbs	\$530	\$757	\$890
VSL448-0-22BF	Stainless Steel(1)	46.3/8" wide x 22" deep Wood Hood Liner for EXTERNAL BLOWER (not included) - 5Amp Variable, Infinite control for external blower - No Remote Control available with external blower - 3 LED Lights (Bulbs Included) - 3 #304 Grade Stainless Steel Baffle Filters - 10" Round Start Collar (No Transition Required)	37 lbs	\$567	\$810	\$952

All Stainless Steel used by Trade-Wind is #304, #4 Standard Appliance Finish

(1) All visible components are Stainless Steel. Some non-visible parts are G90 Galvanized

LINERS

54" VSL (VERY SPECIAL LINERS) for WOOD HOODS

VSL Liners with either INTERNAL Blower(s) or Controls for EXTERNAL Blowers (Roof Top, Wall, or In-Line)

- **NEW Remote Control with optional automatic 5 minute shut off timer**
- INTERNAL BLOWER(S) have Electronic, 3 speed Touch Buttons for Fan and Light Control
- EXTERNAL BLOWER(S) have 5 Amp Variable, Infinite Control for Lights and Blower
- *Ductless Conversion Kits are available for -3 and -4 models only; see Accessories Section*

Model	Color	Description	Approx. Weight	DLR PRICE	BDR	SSP
VSL45412RC	Stainless Steel(1)	52.3/8" wide x 18" deep Wood Hood Liner with a 1200 CFM INTERNAL BLOWERS - Electronic, 3 speed Touch button control for Blowers and lights, with Remote Control - 3 LED Lights (Bulbs Included) - 3 #304 Grade Stainless Steel Baffle Filters - 10" Round Start Collar, Welded Transition Included	59 lbs	\$1,062	\$1,517	\$1,785
VSL4541219RC	Stainless Steel(1)	52.3/8" wide x 19.1/4" deep Wood Hood Liner with a 1200 CFM INTERNAL BLOWERS - Electronic, 3 speed Touch button control for Blowers and lights, with Remote Control - 3 LED Lights (Bulbs Included) - 3 #304 Grade Stainless Steel Baffle Filters - 10" Round Start Collar, Welded Transition Included	59 lbs	\$1,096	\$1,565	\$1,842
VSL4541222RC	Stainless Steel(1)	52.3/8" wide x 22" deep Wood Hood Liner with a 1200 CFM INTERNAL BLOWERS - Electronic, 3 speed Touch button control for Blowers and lights, with Remote Control - 3 LED Lights (Bulbs Included) - 3 #304 Grade Stainless Steel Baffle Filters - 10" Round Start Collar (No Transition Required)	65 lbs	\$1,142	\$1,631	\$1,919
VSL454BF	Stainless Steel(1)	52.3/8" wide x 18" deep Wood Hood Liner for EXTERNAL BLOWER (not included) - 5Amp Variable, Infinite control for external blower - No Remote Control available with external blower - 3 LED Lights (Bulbs Included) - 3 #304 Grade Stainless Steel Baffle Filters - 10" Round Start Collar (No Transition Required)	45 lbs	\$533	\$761	\$895
VSL454-0-19BF	Stainless Steel(1)	52.3/8" wide x 19.1/4" deep Wood Hood Liner for EXTERNAL BLOWER (not included) - 5Amp Variable, Infinite control for external blower - No Remote Control available with external blower - 3 LED Lights (Bulbs Included) - 3 #304 Grade Stainless Steel Baffle Filters - 10" Round Start Collar (No Transition Required)	45 lbs	\$566	\$809	\$951
VSL454-0-22BF	Stainless Steel(1)	52.3/8" wide x 22" deep Wood Hood Liner for EXTERNAL BLOWER (not included) - 5Amp Variable, Infinite control for external blower - No Remote Control available with external blower - 3 LED Lights (Bulbs Included) - 3 #304 Grade Stainless Steel Baffle Filters - 10" Round Start Collar (No Transition Required)	52 lbs	\$606	\$865	\$1,018

All Stainless Steel used by Trade-Wind is #304, #4 Standard Appliance Finish

(1) All visible components are Stainless Steel. Some non-visible parts are G90 Galvanized

August 1, 2022

60" VSL (VERY SPECIAL LINERS) for WOOD HOODS

VSL Liners with either INTERNAL Blower(s) or Controls for EXTERNAL Blowers (Roof Top, Wall, or In-Line)

- **NEW Remote Control with optional automatic 5 minute shut off timer**
- INTERNAL BLOWER(S) have Electronic, 3 speed Touch Buttons for Fan and Light Control
- EXTERNAL BLOWER(S) have 5 Amp Variable, Infinite Control for Lights and Blower
- *Ductless Conversion Kits are available for -3 and -4 models only; see Accessories Section*

Model	Color	Description	Approx. Weight	DLR PRICE	BDR	SSP
VSL46012RC	Stainless Steel(1)	58.3/8" wide x 18" deep Wood Hood Liner with a 1200 CFM INTERNAL BLOWERS - Electronic, 3 speed Touch button control for Blowers and lights, with Remote Control - 3 LED Lights (Bulbs Included) - 3 #304 Grade Stainless Steel Baffle Filters - 10" Round Start Collar, Welded Transition Included	62 lbs	\$1,150	\$1,643	\$1,933
VSL4601219RC	Stainless Steel(1)	58.3/8" wide x 19.1/4" deep Wood Hood Liner with a 1200 CFM INTERNAL BLOWERS - Electronic, 3 speed Touch button control for Blowers and lights, with Remote Control - 3 LED Lights (Bulbs Included) - 3 #304 Grade Stainless Steel Baffle Filters - 10" Round Start Collar, Welded Transition Included	62 lbs	\$1,190	\$1,700	\$2,000
VSL4601222RC	Stainless Steel(1)	58.3/8" wide x 22" deep Wood Hood Liner with a 1200 CFM INTERNAL BLOWERS - Electronic, 3 speed Touch button control for Blowers and lights, with Remote Control - 3 LED Lights (Bulbs Included) - 3 #304 Grade Stainless Steel Baffle Filters - 10" Round Start Collar (No Transition Required)	67 lbs	\$1,211	\$1,731	\$2,036
VSL460BF	Stainless Steel(1)	58.3/8" wide x 18" deep Wood Hood Liner for EXTERNAL BLOWER (not included) - 5Amp Variable, Infinite control for external blower - No Remote Control available with external blower - 3 LED Lights (Bulbs Included) - 3 #304 Grade Stainless Steel Baffle Filters - 10" Round Start Collar (No Transition Required)	47 lbs	\$589	\$841	\$990
VSL460-0-19BF	Stainless Steel(1)	58.3/8" wide x 19.1/4" deep Wood Hood Liner for EXTERNAL BLOWER (not included) - 5Amp Variable, Infinite control for external blower - No Remote Control available with external blower - 3 LED Lights (Bulbs Included) - 3 #304 Grade Stainless Steel Baffle Filters - 10" Round Start Collar (No Transition Required)	47 lbs	\$603	\$861	\$1,013
VSL460-0-22BF	Stainless Steel(1)	58.3/8" wide x 22" deep Wood Hood Liner for EXTERNAL BLOWER (not included) - 5Amp Variable, Infinite control for external blower - No Remote Control available with external blower - 3 LED Lights (Bulbs Included) - 3 #304 Grade Stainless Steel Baffle Filters - 10" Round Start Collar (No Transition Required)	53 lbs	\$626	\$894	\$1,052

All Stainless Steel used by Trade-Wind is #304, #4 Standard Appliance Finish

(1) All visible components are Stainless Steel. Some non-visible parts are G90 Galvanized

August 1, 2022

LINERS

72" VSL (VERY SPECIAL LINERS) for WOOD HOODS

VSL Liners with either INTERNAL Blower(s) or Controls for EXTERNAL Blowers (Roof Top, Wall, or In-Line)

- **NEW Remote Control with optional automatic 5 minute shut off timer**
- INTERNAL BLOWER(S) have Electronic, 3 speed Touch Buttons for Fan and Light Control
- EXTERNAL BLOWER(S) have 5 Amp Variable, Infinite Control for Lights and Blower
- *Ductless Conversion Kits are available for -3 and -4 models only; see Accessories Section*

Model	Color	Description	Approx. Weight	DLR PRICE	BDR	SSP
VSL47212RC	Stainless Steel(1)	70.3/8" wide x 18" deep Wood Hood Liner with a 1200 CFM INTERNAL BLOWERS - Electronic, 3 speed Touch button control for Blowers and lights, with Remote Control - 3 LED Lights (Bulbs Included) - 4 #304 Grade Stainless Steel Baffle Filters - 10" Round Start Collar, Welded Transition Included	67 lbs	\$1,451	\$2,072	\$2,438
VSL4721219RC	Stainless Steel(1)	70.3/8" wide x 19.1/4" deep Wood Hood Liner with a 1200 CFM INTERNAL BLOWERS - Electronic, 3 speed Touch button control for Blowers and lights, with Remote Control - 3 LED Lights (Bulbs Included) - 4 #304 Grade Stainless Steel Baffle Filters - 10" Round Start Collar, Welded Transition Included	69 lbs	\$1,480	\$2,114	\$2,487
VSL4721222RC	Stainless Steel(1)	70.3/8" wide x 22" deep Wood Hood Liner with a 1200 CFM INTERNAL BLOWERS - Electronic, 3 speed Touch button control for Blowers and lights, with Remote Control - 3 LED Lights (Bulbs Included) - 4 #304 Grade Stainless Steel Baffle Filters - 10" Round Start Collar (No Transition Required)	72 lbs	\$1,512	\$2,160	\$2,541
VSL472BF	Stainless Steel(1)	70.3/8" wide x 18" deep Wood Hood Liner for EXTERNAL BLOWER (not included) - 5Amp Variable, Infinite control for external blower - No Remote Control available with external blower - 3 LED Lights (Bulbs Included) - 4 #304 Grade Stainless Steel Baffle Filters - 10" Round Start Collar (No Transition Required)	46 lbs	\$646	\$923	\$1,086
VSL472-0-19BF	Stainless Steel(1)	70.3/8" wide x 19.1/4" deep Wood Hood Liner for EXTERNAL BLOWER (not included) - 5Amp Variable, Infinite control for external blower - No Remote Control available with external blower - 3 LED Lights (Bulbs Included) - 4 #304 Grade Stainless Steel Baffle Filters - 10" Round Start Collar (No Transition Required)	52 lbs	\$691	\$988	\$1,162
VSL472-0-22BF	Stainless Steel(1)	70.3/8" wide x 22" deep Wood Hood Liner for EXTERNAL BLOWER (not included) - 5Amp Variable, Infinite control for external blower - No Remote Control available with external blower - 3 LED Lights (Bulbs Included) - 4 #304 Grade Stainless Steel Baffle Filters - 10" Round Start Collar (No Transition Required)	55 lbs	\$740	\$1,057	\$1,243

All Stainless Steel used by Trade-Wind is #304, #4 Standard Appliance Finish

(1) All visible components are Stainless Steel. Some non-visible parts are G90 Galvanized

August 1, 2022

BARBECUE HOODS

7200 Series

NEW PYRAMID STYLE OUTDOOR BBQ HOODS

- **NEW PYRAMID BBQ HOODS are 15" Deep at Top, 32" Deep at Bottom**
- Available in 36", 42", 48", 60", and 72" widths
- Telescopic Duct Cover (2 piece) Provided for adjustment up to 10' Ceilings
- Optional Duct Cover Available for up to 12' Ceilings (See Accessories)
- Single or Dual 10" Round Start Collar(s)

Model	Color	Description	Approx. Weight	DLR PRICE	BDR	SSP
P7236-12	Stainless Steel ⁽¹⁾	36" Stainless Steel Hood - INTERNAL BLOWERS - 1200 CFM INTERNAL BLOWERS, 3 speed control - 2 Dimmable Halogen Lights (Bulbs Included) - 4 #304 Grade Stainless Steel Baffle Filters - Single 10" Round Start Collar/ Duct Cover to 10' Ceiling	159 lbs	\$1,814	\$2,591	\$3,048
P723612EXT*	Stainless Steel ⁽¹⁾	36" Stainless Steel Hood - INTERNAL BLOWERS - 1200 CFM INTERNAL BLOWERS, 3 speed control - 2 Dimmable Halogen Lights (Bulbs Included) - 4 #304 Grade Stainless Steel Baffle Filters - Single 10" Round Start Collar/ Duct Cover to 12' Ceiling	159 lbs	\$1,893	\$2,704	\$3,181
P7236	Stainless Steel ⁽¹⁾	36" Stainless Steel Hood - EXTERNAL BLOWERS (External Blower NOT Included) - 5 Amp Variable, Infinite Control for external blower - 2 Dimmable Halogen Lights (Bulbs Included) - 4 #304 Grade Stainless Steel Baffle Filters - Single 10" Round Start Collar/ Duct Cover to 10' Ceiling	139 lbs	\$1,612	\$2,303	\$2,709
P7242-12	Stainless Steel ⁽¹⁾	42" Stainless Steel Hood - INTERNAL BLOWERS - 1200 CFM INTERNAL BLOWERS, 3 speed control - 2 Dimmable Halogen Lights (Bulbs Included) - 4 #304 Grade Stainless Steel Baffle Filters - Single 10" Round Start Collar/ Duct Cover to 10' Ceiling	174 lbs	\$2,021	\$2,887	\$3,396
P724212EXT*	Stainless Steel ⁽¹⁾	42" Stainless Steel Hood - INTERNAL BLOWERS - 1200 CFM INTERNAL BLOWERS, 3 speed control - 2 Dimmable Halogen Lights (Bulbs Included) - 4 #304 Grade Stainless Steel Baffle Filters - Single 10" Round Start Collar/ Duct Cover to 12' Ceiling	174 lbs	\$2,111	\$3,016	\$3,549
P7242	Stainless Steel ⁽¹⁾	42" Stainless Steel Hood - EXTERNAL BLOWER (External Blower NOT Included) - 5 Amp Variable, Infinite Control for external blower - 2 Dimmable Halogen Lights (Bulbs Included) - 4 #304 Grade Stainless Steel Baffle Filters - Single 10" Round Start Collar/ Duct Cover to 10' Ceiling	154 lbs	\$1,815	\$2,594	\$3,051
P7248-12	Stainless Steel ⁽¹⁾	48" Stainless Steel Hood - INTERNAL BLOWERS - 1200 CFM INTERNAL BLOWERS, 3 speed control - 3 Dimmable Halogen Lights (Bulbs Included) - 6 #304 Grade Stainless Steel Baffle Filters - Single 10" Round Start Collar/ Duct Cover to 10' Ceiling	189 lbs	\$2,223	\$3,175	\$3,736

* NEW

All Stainless Steel used by Trade-Wind is #304, #4 Standard Appliance Finish

(1) All visible components are Stainless Steel. Some non-visible parts are G90 Galvanized

August 1, 2022

BARBECUE HOODS

7200 Series

NEW PYRAMID STYLE OUTDOOR BBQ HOODS

- **NEW PYRAMID BBQ HOODS are 15" Deep at Top, 32" Deep at Bottom**
- Available in 36", 42", 48", 60", and 72" widths
- Telescopic Duct Cover (2 piece) Provided for adjustment up to 10' Ceilings
- Optional Duct Cover Available for up to 12' Ceilings (See Accessories)
- Single or Dual 10" Round Start Collar(s)

Model	Color	Description	Approx. Weight	DLR PRICE	BDR	SSP
P724812EXT*	Stainless Steel ⁽¹⁾	48" Stainless Steel Hood - INTERNAL BLOWERS - 1200 CFM INTERNAL BLOWERS, 3 speed control - 3 Dimmable Halogen Lights (Bulbs Included) - 6 #304 Grade Stainless Steel Baffle Filters - Single 10" Round Start Collar/ Duct Cover to 12' Ceiling	189 lbs	\$2,323	\$3,318	\$3,904
P7248	Stainless Steel ⁽¹⁾	48" Stainless Steel Hood - EXTERNAL BLOWER (External Blower NOT Included) - 5 Amp Variable, Infinite Control for external blower - 3 Dimmable Halogen Lights (Bulbs Included) - 6 #304 Grade Stainless Steel Baffle Filters - Single 10" Round Start Collar/ Duct Cover to 10' Ceiling	169 lbs	\$2,021	\$2,887	\$3,396

* NEW

All Stainless Steel used by Trade-Wind is #304, #4 Standard Appliance Finish

(1) All visible components are Stainless Steel. Some non-visible parts are G90 Galvanized

August 1, 2022

BARBECUE HOODS

PYRAMID STYLE OUTDOOR BBQ HOODS (Continued)

- **PYRAMID BBQ HOODS** are 15” Deep at Top, 32” Deep at Bottom
- Available in 36”, 42”, 48”, 60”, and 72” widths
- Telescopic Duct Cover (2 piece) Provided for adjustment up to 10’ Ceilings
- Optional Duct Cover Available for up to 12’ Ceilings (See Accessories)
- Single or Dual 10” Round Start Collar(s)

Model	Color	Description	Approx. Weight	DLR PRICE	BDR	SSP
P7260-23	Stainless Steel ⁽ⁱ⁾	60” Stainless Steel Hood - INTERNAL BLOWERS - 2300 CFM INTERNAL BLOWERS, 3 speed control - 3 Dimmable Halogen Lights (Bulbs Included) - 8 #304 Grade Stainless Steel Baffle Filters - Dual 10” Round Start Collars, Requires x2 10” Ducts/ Duct Cover to 10’ Ceiling	204 lbs	\$2,733	\$3,905	\$4,594
P7260	Stainless Steel ⁽ⁱ⁾	60” Stainless Steel Hood - EXTERNAL BLOWER (External Blower NOT Included) - (x2) 5 Amp Variable, Infinite Control for external blower - 3 Dimmable Halogen Lights (Bulbs Included) - 8 #304 Grade Stainless Steel Baffle Filters - Dual 10” Round Start Collars, Requires x2 10” Ducts/ Duct Cover to 10’ Ceiling	184 lbs	\$2,528	\$3,612	\$4,249
P7272-23	Stainless Steel ⁽ⁱ⁾	72” Stainless Steel Hood - INTERNAL BLOWERS - 2300 CFM INTERNAL BLOWERS, 3 speed control - 3 Dimmable Halogen Lights (Bulbs Included) - 8 #304 Grade Stainless Steel Baffle Filters - Dual 10” Round Start Collars, Requires x2 10” Ducts/ Duct Cover to 10’ Ceiling	219 lbs	\$3,324	\$4,748	\$5,586
P7272	Stainless Steel ⁽ⁱ⁾	72” Stainless Steel Hood - EXTERNAL BLOWER (External Blower NOT Included) - (x2) 5 Amp Variable, Infinite Control for external blower - 3 Dimmable Halogen Lights (Bulbs Included) - 8 #304 Grade Stainless Steel Baffle Filters - Dual 10” Round Start Collars, Requires x2 10” Ducts/ Duct Cover to 10’ Ceiling	199 lbs	\$3,061	\$4,373	\$5,144

All Stainless Steel used by Trade-Wind is #304, #4 Standard Appliance Finish

(i) All visible components are Stainless Steel. Some non-visible parts are G90 Galvanized

August 1, 2022

BARBECUE HOODS

PYRAMID STYLE OUTDOOR BBQ HOOD DUCT COVERS

P7200 Series Duct Cover for up to 10' Ceiling - ACCESSORY - (NEW)

Model	Color	Description	Approx. Weight	DLR PRICE	BDR	SSP
PDC7236-10	Stainless Steel ⁽ⁱ⁾	2 Piece Duct Cover to Extend up to 10' Ceilings, For P7236 series Hoods Only	18 lbs	\$311	\$444	\$522
PDC7242-10	Stainless Steel ⁽ⁱ⁾	2 Piece Duct Cover to Extend up to 10' Ceilings, For P7242 series Hoods Only	19 lbs	\$345	\$493	\$579
PDC7248-10	Stainless Steel ⁽ⁱ⁾	2 Piece Duct Cover to Extend up to 10' Ceilings, For P7248 series Hoods Only	22 lbs	\$386	\$551	\$648
PDC7260-10	Stainless Steel ⁽ⁱ⁾	2 Piece Duct Cover to Extend up to 10' Ceilings, For P7260 series Hoods Only	26 lbs	\$430	\$614	\$722
PDC7272-10	Stainless Steel ⁽ⁱ⁾	2 Piece Duct Cover to Extend up to 10' Ceilings, For P7272 series Hoods Only	32 lbs	\$475	\$679	\$799

P7200 Series Duct Cover for up to 12' Ceiling - ACCESSORY

Model	Color	Description	Approx. Weight	DLR PRICE	BDR	SSP
PDC7236	Stainless Steel ⁽ⁱ⁾	2 Piece Duct Cover to Extend up to 12' Ceilings, For P7236 series Hoods Only	18 lbs	\$331	\$473	\$556
PDC7242	Stainless Steel ⁽ⁱ⁾	2 Piece Duct Cover to Extend up to 12' Ceilings, For P7242 series Hoods Only	19 lbs	\$365	\$521	\$613
PDC7248	Stainless Steel ⁽ⁱ⁾	2 Piece Duct Cover to Extend up to 12' Ceilings, For P7248 series Hoods Only	22 lbs	\$406	\$579	\$682
PDC7260	Stainless Steel ⁽ⁱ⁾	2 Piece Duct Cover to Extend up to 12' Ceilings, For P7260 series Hoods Only	26 lbs	\$450	\$642	\$756
PDC7272	Stainless Steel ⁽ⁱ⁾	2 Piece Duct Cover to Extend up to 12' Ceilings, For P7272 series Hoods Only	32 lbs	\$495	\$708	\$833

All Stainless Steel used by Trade-Wind is #304, #4 Standard Appliance Finish

(i) All visible components are Stainless Steel. Some non-visible parts are G90 Galvanized

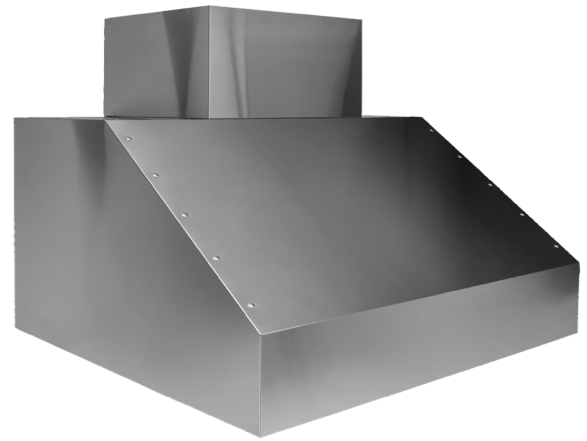
August 1, 2022

BARBECUE HOODS

7200 Series

OUTDOOR BBQ HOODS

- **BBQ HOODS are 15" Deep at Top, 32" Deep at Bottom**
- Available in 36", 42", 48", 54", 60", 66", and 72" widths
- 3 Speed Fan Control(s), Infinite Variable Light Control
- Optional New Telescopic Duct Covers available for Single and Dual Exhaust BBQ Hoods (See Accessories)



Model	Color	Description	Approx. Weight	DLR PRICE	BDR	SSP
7236-12	Stainless Steel ⁽ⁱ⁾	36" Stainless Steel Hood - INTERNAL BLOWERS - 1200 CFM INTERNAL BLOWERS, 3 speed control - 2 Dimmable Halogen Lights (Bulbs Included) - 4 #304 Grade Stainless Steel Baffle Filters - Single 10" Round Start Collar, Requires x1 10" Duct	133 lbs	\$1,722	\$2,460	\$2,894
7236	Stainless Steel ⁽ⁱ⁾	36" Stainless Steel Hood - EXTERNAL BLOWER (External Blower NOT Included) - 5 Amp Variable, Infinite Control for external blower - 2 Dimmable Halogen Lights (Bulbs Included) - 4 #304 Grade Stainless Steel Baffle Filters - Single 10" Round Start Collar, Requires x1 10" Duct	113 lbs	\$1,519	\$2,169	\$2,552
7242-12	Stainless Steel ⁽ⁱ⁾	42" Stainless Steel Hood - INTERNAL BLOWERS - 1200 CFM INTERNAL BLOWERS, 3 speed control - 2 Dimmable Halogen Lights (Bulbs Included) - 4 #304 Grade Stainless Steel Baffle Filters - Single 10" Round Start Collar, Requires x1 10" Duct	153 lbs	\$1,927	\$2,754	\$3,239
7242	Stainless Steel ⁽ⁱ⁾	42" Stainless Steel Hood - EXTERNAL BLOWER (External Blower NOT Included) - 5 Amp Variable, Infinite Control for external blower - 2 Dimmable Halogen Lights (Bulbs Included) - 4 #304 Grade Stainless Steel Baffle Filters - Single 10" Round Start Collar, Requires x1 10" Duct	134 lbs	\$1,724	\$2,463	\$2,897
7248-12	Stainless Steel ⁽ⁱ⁾	48" Stainless Steel Hood - INTERNAL BLOWERS - 1200 CFM INTERNAL BLOWERS, 3 speed control - 3 Dimmable Halogen Lights (Bulbs Included) - 6 #304 Grade Stainless Steel Baffle Filters - Single 10" Round Start Collar, Requires x1 10" Duct	157 lbs	\$2,131	\$3,044	\$3,582
7248	Stainless Steel ⁽ⁱ⁾	48" Stainless Steel Hood - EXTERNAL BLOWER (External Blower NOT Included) - 5 Amp Variable, Infinite Control for external blower - 3 Dimmable Halogen Lights (Bulbs Included) - 6 #304 Grade Stainless Steel Baffle Filters - Single 10" Round Start Collar, Requires x1 10" Duct	137 lbs	\$1,927	\$2,754	\$3,239
7254	Stainless Steel ⁽ⁱ⁾	54" Stainless Steel Hood - EXTERNAL BLOWERS - 2300 CFM INTERNAL BLOWERS, 3 speed control (x2) - 3 Dimmable Halogen Lights (Bulbs Included) - 8 #304 Grade Stainless Steel Baffle Filters - Dual 10" Round Start Collars, Requires x2 10" Ducts	140 lbs	\$2,157	\$3,081	\$3,624

All Stainless Steel used by Trade-Wind is #304, #4 Standard Appliance Finish

(i) All visible components are Stainless Steel. Some non-visible parts are G90 Galvanized

BARBECUE HOODS

OUTDOOR BBQ HOODS (Continued)

- **BBQ HOODS are 15" Deep at Top, 32" Deep at Bottom**
- Available in 36", 42", 48", 54", 60", 66", and 72" widths
- 3 Speed Fan Control(s), Infinite Variable Light Control
- Optional New Telescopic Duct Covers available for Single and Dual Exhaust BBQ Hoods (See Accessories)

Model	Color	Description	Approx. Weight	DLR PRICE	BDR	SSP
7254-23	Stainless Steel ⁽¹⁾	54" Stainless Steel Hood - INTERNAL BLOWERS - 2300 CFM INTERNAL BLOWERS, 3 speed control (x2) - 3 Dimmable Halogen Lights (Bulbs Included) - 8 #304 Grade Stainless Steel Baffle Filters - Dual 10" Round Start Collars, Requires x2 10" Ducts	160 lbs	\$2,384	\$3,406	\$4,007
7260-23	Stainless Steel ⁽¹⁾	60" Stainless Steel Hood - INTERNAL BLOWERS - 2300 CFM INTERNAL BLOWER, 3 speed control (x2) - 3 Dimmable Halogen Lights (Bulbs Included) - 8 #304 Grade Stainless Steel Baffle Filters - Dual 10" Round Start Collars, Requires x2 10" Ducts	164 lbs	\$2,637	\$3,767	\$4,431
7260	Stainless Steel ⁽¹⁾	60" Stainless Steel Hood - EXTERNAL BLOWERS (External Blower Not Included) - (x2) 5 Amp Variable, Infinite Control for External Blower - 3 Dimmable Halogen Lights (Bulbs Included) - 8 #304 Grade Stainless Steel Baffle Filters - Dual 10" Round Start Collars, Requires x2 10" Ducts	164 lbs	\$2,435	\$3,478	\$4,092
7266	Stainless Steel ⁽¹⁾	66" Stainless Steel Hood - EXTERNAL BLOWERS - 2300 CFM INTERNAL BLOWER, 3 speed control (x2) - 3 Dimmable Halogen Lights (Bulbs Included) - 8 #304 Grade Stainless Steel Baffle Filters - Dual 10" Round Start Collars, Requires x2 10" Ducts	168 lbs	\$2,012	\$2,875	\$3,382
7266-23	Stainless Steel ⁽¹⁾	66" Stainless Steel Hood - INTERNAL BLOWERS - 2300 CFM INTERNAL BLOWER, 3 speed control (x2) - 3 Dimmable Halogen Lights (Bulbs Included) - 8 #304 Grade Stainless Steel Baffle Filters - Dual 10" Round Start Collars, Requires x2 10" Ducts	168 lbs	\$2,893	\$4,133	\$4,862
7272-23	Stainless Steel ⁽¹⁾	72" Stainless Steel Hood - INTERNAL BLOWERS - 2300 CFM INTERNAL BLOWER, 3 speed control (x2) - 3 Dimmable Halogen Lights (Bulbs Included) - 8 #304 Grade Stainless Steel Baffle Filters - Dual 10" Round Start Collars, Requires x2 10" Ducts	172 lbs	\$3,225	\$4,608	\$5,421
7272	Stainless Steel ⁽¹⁾	72" Stainless Steel Hood - EXTERNAL BLOWER (External Blower NOT Included) - (x2) 5 Amp Variable, Infinite Control for external blower - 3 Dimmable Halogen Lights (Bulbs Included) - 8 #304 Grade Stainless Steel Baffle Filters - Dual 10" Round Start Collars, Requires x2 10" Ducts	152 lbs	\$2,964	\$4,235	\$4,982

All Stainless Steel used by Trade-Wind is #304, #4 Standard Appliance Finish

(1) All visible components are Stainless Steel. Some non-visible parts are G90 Galvanized

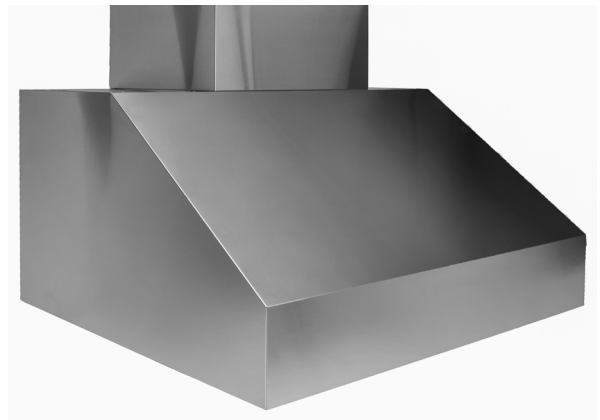
August 1, 2022

BARBECUE HOODS

S7200CD Series

SMOOTH FRONT/CONVERTIBLE DISCHARGE OUTDOOR BBQ HOODS

- **BBQ HOODS** are 15" Deep at Top, 32" Deep at Bottom
- Available in 36", 42", 48", 54", 60", 66", and 72" widths
- 3 Speed Fan Control(s), Infinite Variable Light Control
- **Convertible Discharge - Top & Rear Venting Options**
- Optional New Telescopic Duct Covers available for Single and Dual Exhaust BBQ Hoods (See Accessories)



Model	Color	Description	Approx. Weight	DLR PRICE	BDR	SSP
S723612CD	Stainless Steel ⁽ⁱ⁾	36" Stainless Steel Hood - INTERNAL BLOWERS - 1200 CFM INTERNAL BLOWERS, 3 speed control - 2 Dimmable Halogen Lights (Bulbs Included) - 4 #304 Grade Stainless Steel Baffle Filters - Single 10" Round Start Collar, Requires x1 10" Duct	133 lbs	\$1,617	\$2,310	\$2,718
S7236CD	Stainless Steel ⁽ⁱ⁾	36" Stainless Steel Hood - EXTERNAL BLOWER (External Blower NOT Included) - 5 Amp Variable, Infinite Control for external blower - 2 Dimmable Halogen Lights (Bulbs Included) - 4 #304 Grade Stainless Steel Baffle Filters - Single 10" Round Start Collar, Requires x1 10" Duct	113 lbs	\$1,434	\$2,048	\$2,410
S724212CD	Stainless Steel ⁽ⁱ⁾	42" Stainless Steel Hood - INTERNAL BLOWERS - 1200 CFM INTERNAL BLOWERS, 3 speed control - 2 Dimmable Halogen Lights (Bulbs Included) - 4 #304 Grade Stainless Steel Baffle Filters - Single 10" Round Start Collar, Requires x1 10" Duct	153 lbs	\$1,783	\$2,547	\$2,997
S7242CD	Stainless Steel ⁽ⁱ⁾	42" Stainless Steel Hood - EXTERNAL BLOWER (External Blower NOT Included) - 5 Amp Variable, Infinite Control for external blower - 2 Dimmable Halogen Lights (Bulbs Included) - 4 #304 Grade Stainless Steel Baffle Filters - Single 10" Round Start Collar, Requires x1 10" Duct	134 lbs	\$1,600	\$2,286	\$2,689
S724812CD	Stainless Steel ⁽ⁱ⁾	48" Stainless Steel Hood - INTERNAL BLOWERS - 1200 CFM INTERNAL BLOWERS, 3 speed control - 3 Dimmable Halogen Lights (Bulbs Included) - 6 #304 Grade Stainless Steel Baffle Filters - Single 10" Round Start Collar, Requires x1 10" Duct	157 lbs	\$1,950	\$2,785	\$3,277
S7248CD	Stainless Steel ⁽ⁱ⁾	48" Stainless Steel Hood - EXTERNAL BLOWER (External Blower NOT Included) - 5 Amp Variable, Infinite Control for external blower - 3 Dimmable Halogen Lights (Bulbs Included) - 6 #304 Grade Stainless Steel Baffle Filters - Single 10" Round Start Collar, Requires x1 10" Duct	137 lbs	\$1,763	\$2,518	\$2,963
S725423CD	Stainless Steel ⁽ⁱ⁾	54" Stainless Steel Hood - INTERNAL BLOWERS - 2300 CFM INTERNAL BLOWERS, 3 speed control (x2) - 3 Dimmable Halogen Lights (Bulbs Included) - 8 #304 Grade Stainless Steel Baffle Filters - Dual 10" Round Start Collars, Requires x2 10" Ducts	160 lbs	\$2,316	\$3,309	\$3,892

All Stainless Steel used by Trade-Wind is #304, #4 Standard Appliance Finish

(i) All visible components are Stainless Steel. Some non-visible parts are G90 Galvanized

BARBECUE HOODS

SMOOTH FRONT/CONVERTIBLE

DISCHARGE OUTDOOR BBQ HOODS (Continued)

- **BBQ HOODS are 15" Deep at Top, 32" Deep at Bottom**
- Available in 36", 42", 48", 54", 60", 66", and 72" widths
- 3 Speed Fan Control(s), Infinite Variable Light Control
- **Convertible Discharge - Top & Rear Venting Options**
- Optional New Telescopic Duct Covers available for Single and Dual Exhaust BBQ Hoods (See Accessories)

Model	Color	Description	Approx. Weight	DLR PRICE	BDR	SSP
S7254CD	Stainless Steel ⁽¹⁾	54" Stainless Steel Hood - EXTERNAL BLOWER (External Blower NOT Included) - (x2) 5 Amp Variable, Infinite Control for external blower - 3 Dimmable Halogen Lights (Bulbs Included) - 8 #304 Grade Stainless Steel Baffle Filters - Dual 10" Round Start Collars, Requires x2 10" Ducts	140 lbs	\$2,133	\$3,047	\$3,584
S726023CD	Stainless Steel ⁽¹⁾	60" Stainless Steel Hood - INTERNAL BLOWERS - 2300 CFM INTERNAL BLOWER, 3 speed control (x2) - 3 Dimmable Halogen Lights (Bulbs Included) - 8 #304 Grade Stainless Steel Baffle Filters - Dual 10" Round Start Collars, Requires x2 10" Ducts	164 lbs	\$2,526	\$3,609	\$4,246
S7260CD	Stainless Steel ⁽¹⁾	60" Stainless Steel Hood - EXTERNAL BLOWER (External Blower NOT Included) - (x2) 5 Amp Variable, Infinite Control for external blower - 3 Dimmable Halogen Lights (Bulbs Included) - 8 #304 Grade Stainless Steel Baffle Filters - Dual 10" Round Start Collars, Requires x2 10" Ducts	144 lbs	\$2,343	\$3,347	\$3,938
S726623CD	Stainless Steel ⁽¹⁾	66" Stainless Steel Hood - INTERNAL BLOWERS - 2300 CFM INTERNAL BLOWER, 3 speed control (x2) - 3 Dimmable Halogen Lights (Bulbs Included) - 8 #304 Grade Stainless Steel Baffle Filters - Dual 10" Round Start Collars, Requires x2 10" Ducts	168 lbs	\$2,839	\$4,055	\$4,771
S7266CD	Stainless Steel ⁽¹⁾	66" Stainless Steel Hood - EXTERNAL BLOWER (External Blower NOT Included) - (x2) 5 Amp Variable, Infinite Control for external blower - 3 Dimmable Halogen Lights (Bulbs Included) - 8 #304 Grade Stainless Steel Baffle Filters - Dual 10" Round Start Collars, Requires x2 10" Ducts	148 lbs	\$2,655	\$3,793	\$4,463
S727223CD	Stainless Steel ⁽¹⁾	72" Stainless Steel Hood - INTERNAL BLOWERS - 2300 CFM INTERNAL BLOWER, 3 speed control (x2) - 3 Dimmable Halogen Lights (Bulbs Included) - 8 #304 Grade Stainless Steel Baffle Filters - Dual 10" Round Start Collars, Requires x2 10" Ducts	172 lbs	\$3,147	\$4,496	\$5,290
S7272CD	Stainless Steel ⁽¹⁾	72" Stainless Steel Hood - EXTERNAL BLOWER (External Blower NOT Included) - (x2) 5 Amp Variable, Infinite Control for external blower - 3 Dimmable Halogen Lights (Bulbs Included) - 8 #304 Grade Stainless Steel Baffle Filters - Dual 10" Round Start Collars, Requires x2 10" Ducts	152 lbs	\$2,964	\$4,235	\$4,982

All Stainless Steel used by Trade-Wind is #304, #4 Standard Appliance Finish

(1) All visible components are Stainless Steel. Some non-visible parts are G90 Galvanized

August 1, 2022

BARBECUE HOODS

7200 & S7200CD Series BBQ Hood Duct Covers

2 Piece Telescopic Duct Cover for 9' to 10' Ceiling (15" Deep) - ACCESSORY

Model	Color	Description	Approx. Weight	DLR PRICE	BDR	SSP
DC7201S	Stainless Steel ⁽¹⁾	BBQ Duct Cover for 7200/S7200CD SINGLE EXHAUST HOODS from 9' to 10' ceilings (no cover required for 8'),	18 lbs	\$255	\$364	\$428
DC7201D	Stainless Steel ⁽¹⁾	BBQ Duct Cover for 7200/S7200CD DUAL EXHAUST HOODS from 9' to 10' ceilings (no cover required for 8')	19 lbs	\$275	\$393	\$462

2 Piece Telescopic Duct Cover for 10' to 12' Ceiling (15" Deep) - ACCESSORY

Model	Color	Description	Approx. Weight	DLR PRICE	BDR	SSP
DC7200S	Stainless Steel ⁽¹⁾	BBQ Duct Cover for 7200/S7200CD SINGLE EXHAUST HOODS from 10' to 12' ceilings (no cover required for 8')	18 lbs	\$285	\$407	\$479
DC7200D	Stainless Steel ⁽¹⁾	BBQ Duct Cover for 7200/S7200CD DUAL EXHAUST HOODS from 10' to 12' ceilings (no cover required for 8')	22 lbs	\$331	\$473	\$556

48" Island Style Outdoor BBQ Hoods

Model	Color	Description	Approx. Weight	DLR PRICE	BDR	SSP
P7248-12-ISL	Stainless Steel ⁽¹⁾	48", Island - Internal 1200 CFM, 10" Start Collar, Duct Cover to 10' Ceilings	189 lbs	\$4,308	\$6,154	\$7,240
P7248-ISL	Stainless Steel ⁽¹⁾	48", Island - Variable Switch for External Blower, 10" Start Collar, Duct Cover to 10' Ceilings	169 lbs	\$4,104	\$5,863	\$6,898

All Stainless Steel used by Trade-Wind is #304, #4 Standard Appliance Finish

(1) All visible components are Stainless Steel. Some non-visible parts are G90 Galvanized

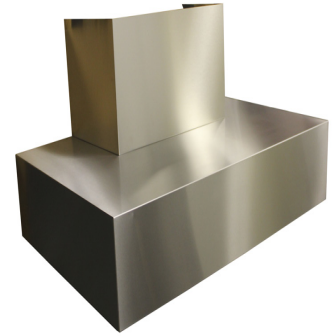
August 1, 2022

BARBECUE HOODS

7200 T-SHAPED OUTDOOR BBQ HOODS

T-SHAPED OUTDOOR BBQ HOODS

- Powerful Internal Blowers Deliver 1200CFM
- Heavy gauge commercial stainless steel (#304 grade with #4 brush finish)
- Dimmable 50 Watt Halogen Lights (Bulbs Included)
- Four 12" by 14" baffle filters for Enhanced Performance (six on larger models)
- Optional In-line Blower Deliver 1266CFM



Model	Color	Description	Approx. Weight	DLR PRICE	BDR	SSP
T7236-12	Stainless Steel ⁽¹⁾	36" , Internal 1200 CFM, 10" Start Collar, Duct Cover to 10' Ceilings	159 lbs	\$1,759	\$2,514	\$2,957
T723612EXT*	Stainless Steel ⁽¹⁾	36" , Internal 1200 CFM, 10" Start Collar, Duct Cover to 12' Ceilings	159 lbs	\$1,839	\$2,627	\$3,090
T7236	Stainless Steel ⁽¹⁾	36" , Variable Switch for External Blower, 10" Start Collar, Duct Cover to 10'	139 lbs	\$1,558	\$2,225	\$2,618
T7242-12	Stainless Steel ⁽¹⁾	42" , Internal 1200 CFM, 10" Start Collar, Duct Cover to 10' Ceilings	174 lbs	\$1,970	\$2,814	\$3,311
T724212EXT*	Stainless Steel ⁽¹⁾	42" , Internal 1200 CFM, 10" Start Collar, Duct Cover to 12' Ceilings	174 lbs	\$2,060	\$2,943	\$3,462
T7242	Stainless Steel ⁽¹⁾	42" , Variable Switch for External Blower, 10" Start Collar , Duct Cover to 10'	154 lbs	\$1,768	\$2,526	\$2,971
T7248-12	Stainless Steel ⁽¹⁾	48" , Internal 1200 CFM, 10" Start Collar, Duct Cover to 10' Ceilings	189 lbs	\$2,175	\$3,107	\$3,656
T724812EXT*	Stainless Steel ⁽¹⁾	48" , Internal 1200 CFM, 10" Start Collar, Duct Cover to 12' Ceilings	189 lbs	\$2,276	\$3,251	\$3,825
T7248	Stainless Steel ⁽¹⁾	48" , Variable Switch for External Blower, 10" Start Collar , Duct Cover to 10' Ceilings	169 lbs	\$1,973	\$2,819	\$3,316

Model	Color	Description	Approx. Weight	DLR PRICE	BDR	SSP
TDC7200	Stainless Steel ⁽¹⁾	1 Outside Piece Duct Cover to EXTEND From 10' - 12' Ceiling for TC7200 Hoods	18 lbs	\$266	\$381	\$448

* NEW

All Stainless Steel used by Trade-Wind is #304, #4 Standard Appliance Finish

(1) All visible components are Stainless Steel. Some non-visible parts are G90 Galvanized

August 1, 2022

BARBECUE LINERS

L7200 Series

OUTDOOR BBQ LINERS

- **BBQ LINERS** are 32" in Depth
- 3 Speed Fan Control(s), Infinite Variable Light Control
- Dimmable 50 Watt Halogen Lights (Bulbs Included)
- Full-Filter Bottom using #304 Grade Stainless Steel Baffle Filter
- Single or Dual 10" Round Start Collar(s)



Model	Color	Description	Approx. Weight	DLR PRICE	BDR	SSP
L7236-12	Stainless Steel ⁽¹⁾	34.1/2" Stainless Steel Liner - INTERNAL BLOWERS - 1200 CFM INTERNAL BLOWERS, 3 speed control - 2 Dimmable Halogen Lights (Bulbs Included) - 4 #304 Grade Stainless Steel Baffle Filters - Single 10" Round Start Collar, Requires x1 10" Duct	152 lbs	\$1,622	\$2,317	\$2,726
L7236	Stainless Steel ⁽¹⁾	34.1/2" Stainless Steel Liner - EXTERNAL BLOWER (External Blower NOT Included) - 5 Amp Variable, Infinite Control for external blower - 2 Dimmable Halogen Lights (Bulbs Included) - 4 #304 Grade Stainless Steel Baffle Filters - Single 10" Round Start Collar, Requires x1 10" Duct	137 lbs	\$1,418	\$2,026	\$2,384
L7242-12	Stainless Steel ⁽¹⁾	40.1/2" Stainless Steel Liner - INTERNAL BLOWERS - 1200 CFM INTERNAL BLOWERS, 3 speed control - 2 Dimmable Halogen Lights (Bulbs Included) - 4 #304 Grade Stainless Steel Baffle Filters - Single 10" Round Start Collar, Requires x1 10" Duct	156 lbs	\$1,824	\$2,606	\$3,065
L7242	Stainless Steel ⁽¹⁾	40.1/2" Stainless Steel Liner - EXTERNAL BLOWER (External Blower NOT Included) - 5 Amp Variable, Infinite Control for external blower - 2 Dimmable Halogen Lights (Bulbs Included) - 4 #304 Grade Stainless Steel Baffle Filters - Single 10" Round Start Collar, Requires x1 10" Duct	141 lbs	\$1,622	\$2,317	\$2,726
L7248-12	Stainless Steel ⁽¹⁾	46.1/2" Stainless Steel Liner - INTERNAL BLOWERS - 1200 CFM INTERNAL BLOWERS, 3 speed control - 3 Dimmable Halogen Lights (Bulbs Included) - 6 #304 Grade Stainless Steel Baffle Filters - Single 10" Round Start Collar, Requires x1 10" Duct	160 lbs	\$2,028	\$2,897	\$3,408
L7248	Stainless Steel ⁽¹⁾	46.1/2" Stainless Steel Liner - EXTERNAL BLOWER (External Blower NOT Included) - 5 Amp Variable, Infinite Control for external blower - 3 Dimmable Halogen Lights (Bulbs Included) - 6 #304 Grade Stainless Steel Baffle Filters - Single 10" Round Start Collar, Requires x1 10" Duct	145 lbs	\$1,824	\$2,606	\$3,065
L7254-23	Stainless Steel ⁽¹⁾	52.1/2" Stainless Steel Liner - INTERNAL BLOWERS - 2300 CFM INTERNAL BLOWERS, 3 speed control (x2) - 3 Dimmable Halogen Lights (Bulbs Included) - 8 #304 Grade Stainless Steel Baffle Filters - Dual 10" Round Start Collars, Requires x2 10" Ducts	164 lbs	\$2,280	\$3,258	\$3,833

All Stainless Steel used by Trade-Wind is #304, #4 Standard Appliance Finish

(1) All visible components are Stainless Steel. Some non-visible parts are G90 Galvanized

August 1, 2022

BARBECUE LINERS

OUTDOOR BBQ LINERS (Continued)

- **BBQ LINERS are 32" in Depth**
- 3 Speed Fan Control(s), Infinite Variable Light Control
- Dimmable 50 Watt Halogen Lights (Bulbs Included)
- Full-Filter Bottom using #304 Grade Stainless Steel Baffle Filter
- Single or Dual 10" Round Start Collar(s)

Model	Color	Description	Approx. Weight	DLR PRICE	BDR	SSP
L7254	Stainless Steel ⁽ⁱ⁾	52.1/2" Stainless Steel Liner - EXTERNAL BLOWER (External Blower NOT Included) - (x2) 5 Amp Variable, Infinite Control for external blower - 3 Dimmable Halogen Lights (Bulbs Included) - 8 #304 Grade Stainless Steel Baffle Filters - Dual 10" Round Start Collars, Requires x2 10" Ducts	149 lbs	\$2,078	\$2,969	\$3,493
L7260-23	Stainless Steel ⁽ⁱ⁾	58.1/2" Stainless Steel Liner - INTERNAL BLOWERS - 2300 CFM INTERNAL BLOWERS, 3 speed control (x2) - 3 Dimmable Halogen Lights (Bulbs Included) - 8 #304 Grade Stainless Steel Baffle Filters - Dual 10" Round Start Collars, Requires x2 10" Ducts	167 lbs	\$2,537	\$3,624	\$4,263
L7260	Stainless Steel ⁽ⁱ⁾	58.1/2" Stainless Steel Liner - EXTERNAL BLOWER (External Blower NOT Included) - (x2) 5 Amp Variable, Infinite Control for external blower - 3 Dimmable Halogen Lights (Bulbs Included) - 8 #304 Grade Stainless Steel Baffle Filters - Dual 10" Round Start Collars, Requires x2 10" Ducts	152 lbs	\$2,333	\$3,333	\$3,921
L7266-23	Stainless Steel ⁽ⁱ⁾	64.1/2" Stainless Steel Liner - INTERNAL BLOWERS - 2300 CFM INTERNAL BLOWERS, 3 speed control (x2) - 3 Dimmable Halogen Lights (Bulbs Included) - 8 #304 Grade Stainless Steel Baffle Filters - Dual 10" Round Start Collars, Requires x2 10" Ducts	171 lbs	\$2,789	\$3,985	\$4,688
L7266	Stainless Steel ⁽ⁱ⁾	64.1/2" Stainless Steel Liner - EXTERNAL BLOWER (External Blower NOT Included) - (x2) 5 Amp Variable, Infinite Control for external blower - 3 Dimmable Halogen Lights (Bulbs Included) - 8 #304 Grade Stainless Steel Baffle Filters - Dual 10" Round Start Collars, Requires x2 10" Ducts	156 lbs	\$2,593	\$3,704	\$4,357
L7272-23	Stainless Steel ⁽ⁱ⁾	70.1/2" Stainless Steel Liner - INTERNAL BLOWERS - 2300 CFM INTERNAL BLOWERS, 3 speed control (x2) - 3 Dimmable Halogen Lights (Bulbs Included) - 8 #304 Grade Stainless Steel Baffle Filters - Dual 10" Round Start Collars, Requires x2 10" Ducts	175 lbs	\$3,124	\$4,462	\$5,250
L7272	Stainless Steel ⁽ⁱ⁾	70.1/2" Stainless Steel Liner - EXTERNAL BLOWER (External Blower NOT Included) - (x2) 5 Amp Variable, Infinite Control for external blower - 3 Dimmable Halogen Lights (Bulbs Included) - 8 #304 Grade Stainless Steel Baffle Filters - Dual 10" Round Start Collars, Requires x2 10" Ducts	161 lbs	\$2,828	\$4,041	\$4,754

All Stainless Steel used by Trade-Wind is #304, #4 Standard Appliance Finish

(i) All visible components are Stainless Steel. Some non-visible parts are G90 Galvanized

August 1, 2022

INDOOR RANGE HOODS

3000 Range Hoods 3000 Slim Line Series

- Slim Line (3" Tall) Range Hood with 390 CFM Internal Blower
- **NEW Remote Control with optional automatic 5 minute shut off timer**
- Top Vent Only - For rear discharge, use 7" 90° Elbow (not provided)
- Telescopic Duct Cover for up to 10' Ceiling
- Optional Duct Cover for up to 12' Ceiling (See Accessories)



Model	Color	Description	Approx. Weight	DLR PRICE	BDR	SSP
30303RC	Stainless Steel ⁽¹⁾	30" Wide x 20" Deep x 3" Tall, Wall Mount Range Hood - 390 CFM Internal Blower - Does Not Require Make Up Air - Electronic, 3 speed touch button control for blower and lights, with Remote Control - 2 LED Lights (Bulbs Included) - 2 #304 Grade Stainless Steel Baffle Filters - 7" Round Start Collar	34 lbs	\$584	\$834	\$981
30363RC	Stainless Steel ⁽¹⁾	36" Wide x 20" Deep x 3" Tall, Wall Mount Range Hood - 390 CFM Internal Blower - Does Not Require Make Up Air - Electronic, 3 speed touch button control for blower and lights, with Remote Control - 2 LED Lights (Bulbs Included) - 2 #304 Grade Stainless Steel Baffle Filters - 7" Round Start Collar	36 lbs	\$618	\$882	\$1,038
30423RC	Stainless Steel ⁽¹⁾	42" Wide x 20" Deep x 3" Tall, Wall Mount Range Hood - 390 CFM Internal Blower - Does Not Require Make Up Air - Electronic, 3 speed touch button control for blower and lights, with Remote Control - 2 LED Lights (Bulbs Included) - 2 #304 Grade Stainless Steel Baffle Filters - 7" Round Start Collar	38 lbs	\$660	\$943	\$1,109

3000 Series Duct Cover for up to 12' Ceiling - ACCESSORY

Model	Color	Description	Approx. Weight	DLR PRICE	BDR	SSP
DC3000-10*	Stainless Steel ⁽¹⁾	2 Piece Duct Cover to Extend up to 10' Ceilings for 3000 Series Hoods Only	25 lbs	\$266	\$380	\$447
DC3000-12	Stainless Steel ⁽¹⁾	2 Piece Duct Cover to Extend up to 12' Ceilings for 3000 Series Hoods Only	26 lbs	\$285	\$407	\$479

* NEW

All Stainless Steel used by Trade-Wind is #304, #4 Standard Appliance Finish

(1) All visible components are Stainless Steel. Some non-visible parts are G90 Galvanized

INDOOR RANGE HOODS

H3200 Series Range Hoods H3200 Series

- **NEW Remote Control with optional automatic 5 minute shut off timer**
- 12" Tall Range Hoods
- 390 CFM, 600 CFM or 780 CFM Internal Blower
- Top Vent Only - For rear discharge, use 90° Elbow (not provided)



Model	Color	Description	Approx. Weight	DLR PRICE	BDR	SSP
H32303RC	Stainless Steel ⁽¹⁾	30" Wide x 20" Deep x 12" Tall, Range Hood - 390 CFM Internal Blower - Does Not Require Make Up Air - Electronic, 3 speed touch button control for blower and lights, with Remote Control - 2 LED Lights (Bulbs Included) - 2 #304 Grade Stainless Steel Baffle Filters - 7" Round Start Collar	30 lbs	\$482	\$688	\$810
H32306RC	Stainless Steel ⁽¹⁾	30" Wide x 20" Deep x 12" Tall, Range Hood - 600 CFM Internal Blower - Electronic, 3 speed touch button control for blower and lights, with Remote Control - 2 LED Lights (Bulbs Included) - 2 #304 Grade Stainless Steel Baffle Filters - 8" Round Start Collar	32 lbs	\$623	\$890	\$1,047
H32363RC	Stainless Steel ⁽¹⁾	36" Wide x 20" Deep x 12" Tall, Range Hood - 390 CFM Internal Blower - Does Not Require Make Up Air - Electronic, 3 speed touch button control for blower and lights, with Remote Control - 2 LED Lights (Bulbs Included) - 2 #304 Grade Stainless Steel Baffle Filters - 7" Round Start Collar	32 lbs	\$526	\$751	\$884
H32366RC	Stainless Steel ⁽¹⁾	36" Wide x 20" Deep x 12" Tall, Range Hood - 600 CFM Internal Blower - Electronic, 3 speed touch button control for blower and lights, with Remote Control - 2 LED Lights (Bulbs Included) - 2 #304 Grade Stainless Steel Baffle Filters - 8" Round Start Collar	34 lbs	\$665	\$950	\$1,118
H32423RC	Stainless Steel ⁽¹⁾	42" Wide x 20" Deep x 12" Tall, Range Hood - 390 CFM Internal Blower - Does Not Require Make Up Air - Electronic, 3 speed touch button control for blower and lights, with Remote Control - 2 LED Lights (Bulbs Included) - 2 #304 Grade Stainless Steel Baffle Filters - 7" Round Start Collar	33 lbs	\$580	\$829	\$975
H32426RC	Stainless Steel ⁽¹⁾	42" Wide x 20" Deep x 12" Tall, Range Hood - 600 CFM Internal Blower - Electronic, 3 speed touch button control for blower and lights, with Remote Control - 2 LED Lights (Bulbs Included) - 2 #304 Grade Stainless Steel Baffle Filters - 8" Round Start Collar	35 lbs	\$709	\$1,013	\$1,192

All Stainless Steel used by Trade-Wind is #304, #4 Standard Appliance Finish

(1) All visible components are Stainless Steel. Some non-visible parts are G90 Galvanized

August 1, 2022

INDOOR RANGE HOODS

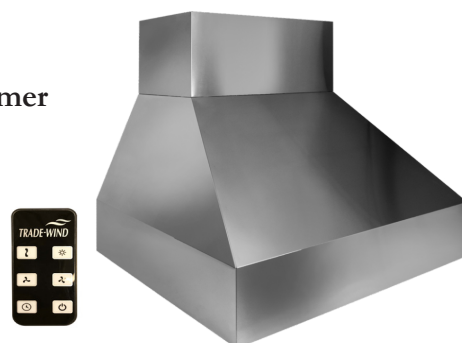
H3200 Series (Continued)

- **NEW Remote Control with optional automatic 5 minute shut off timer**
- 12" Tall Range Hoods
- 390 CFM, 600 CFM or 780 CFM Internal Blower
- Top Vent Only - For rear discharge, use 90° Elbow (not provided)

Model	Color	Description	Approx. Weight	DLR PRICE	BDR	SSP
H32487RC	Stainless Steel ⁽¹⁾	48" Wide x 20" Deep x 12" Tall, Range Hood - 780 CFM Internal Blower - Electronic, 3 speed touch button control for blower and lights, with Remote Control - 3 LED Lights (Bulbs Included) - 3 #304 Grade Stainless Steel Baffle Filters - 10" Round Start Collar	38 lbs	\$850	\$1,214	\$1,429

P3200 Pyramid Series

- **NEW Remote Control with optional automatic 5 minute shut off timer**
- 12" Tall Range Hoods
- 390 CFM, 600 CFM, or 780 CFM Blower
- Telescopic Duct Cover for up to 10' Ceiling
- Optional Duct Cover for up to 12' Ceiling (See Accessories)



Model	Color	Description	Approx. Weight	DLR PRICE	BDR	SSP
P32303RC	Stainless Steel ⁽¹⁾	30" Wide x 20" Deep x 12" Tall, Pyramid Range Hood - 390 CFM Internal Blower - Does Not Require Make Up Air - Electronic, 3 speed touch button control for blower and lights, with Remote Control - 2 LED Lights (Bulbs Included) - 2 #304 Grade Stainless Steel Baffle Filters - 7" Round Start Collar	40 lbs	\$623	\$890	\$1,047
P32306RC	Stainless Steel ⁽¹⁾	30" Wide x 20" Deep x 12" Tall, Pyramid Range Hood - 600 CFM Internal Blower - Electronic, 3 speed touch button control for blower and lights, with Remote Control - 2 LED Lights (Bulbs Included) - 2 #304 Grade Stainless Steel Baffle Filters - 8" Round Start Collar	42 lbs	\$667	\$953	\$1,121
P32363RC	Stainless Steel ⁽¹⁾	36" Wide x 20" Deep x 12" Tall, Pyramid Range Hood - 390 CFM Internal Blower - Does Not Require Make Up Air - Electronic, 3 speed touch button control for blower and lights, with Remote Control - 2 LED Lights (Bulbs Included) - 2 #304 Grade Stainless Steel Baffle Filters - 7" Round Start Collar	42 lbs	\$709	\$1,013	\$1,192

All Stainless Steel used by Trade-Wind is #304, #4 Standard Appliance Finish

(1) All visible components are Stainless Steel. Some non-visible parts are G90 Galvanized

August 1, 2022

INDOOR RANGE HOODS

P3200 Pyramid Series (Continued)

- **NEW Remote Control with optional automatic 5 minute shut off timer**
- 12" Tall Range Hoods
- 390 CFM, 600 CFM, or 780 CFM Blower
Telescopic Duct Cover for up to 10' Ceiling
- Optional Duct Cover for up to 12' Ceiling (See Accessories)

Model	Color	Description	Approx. Weight	DLR PRICE	BDR	SSP
P32366RC	Stainless Steel ⁽¹⁾	36" Wide x 20" Deep x 12" Tall, Pyramid Range Hood - 600 CFM Internal Blower - Electronic, 3 speed touch button control for blower and lights, with Remote Control - 2 LED Lights (Bulbs Included) - 2 #304 Grade Stainless Steel Baffle Filters - 8" Round Start Collar	45 lbs	\$762	\$1,088	\$1,280
P32423RC	Stainless Steel ⁽¹⁾	42" Wide x 20" Deep x 12" Tall, Pyramid Range Hood - 390 CFM Internal Blower - Does Not Require Make Up Air - Electronic, 3 speed touch button control for blower and lights, with Remote Control - 2 LED Lights (Bulbs Included) - 2 #304 Grade Stainless Steel Baffle Filters - 7" Round Start Collar	45 lbs	\$762	\$1,088	\$1,280
P32426RC	Stainless Steel ⁽¹⁾	42" Wide x 20" Deep x 12" Tall, Pyramid Range Hood - 600 CFM Internal Blower - Electronic, 3 speed touch button control for blower and lights, with Remote Control - 2 LED Lights (Bulbs Included) - 2 #304 Grade Stainless Steel Baffle Filters - 8" Round Start Collar	47 lbs	\$813	\$1,161	\$1,366
P32487RC	Stainless Steel ⁽¹⁾	48" Wide x 20" Deep x 12" Tall, Pyramid Range Hood - 780 CFM Internal Blower - Electronic, 3 speed touch button control for blower and lights, with Remote Control - 3 LED Lights (Bulbs Included) - 3 #304 Grade Stainless Steel Baffle Filters - 10" Round Start Collar	51 lbs	\$911	\$1,302	\$1,531

All Stainless Steel used by Trade-Wind is #304, #4 Standard Appliance Finish

(1) All visible components are Stainless Steel. Some non-visible parts are G90 Galvanized

August 1, 2022

INDOOR RANGE HOODS

P3200 Pyramid Series Duct Covers

P3200 Series Duct Cover for up to 10' Ceiling - ACCESSORY - (NEW)

Model	Color	Description	Approx. Weight	DLR PRICE	BDR	SSP
PDC3230-10	Stainless Steel ⁽¹⁾	2 Piece Duct Cover to Extend up to 10' Ceilings, For P3230 series Hoods Only	17 lbs	\$266	\$381	\$448
PDC3236-10	Stainless Steel ⁽¹⁾	2 Piece Duct Cover to Extend up to 10' Ceilings, For P3236 series Hoods Only	18 lbs	\$311	\$445	\$524
PDC3242-10	Stainless Steel ⁽¹⁾	2 Piece Duct Cover to Extend up to 10' Ceilings, For P3242 series Hoods Only	19 lbs	\$344	\$492	\$579
PDC3248-10	Stainless Steel ⁽¹⁾	2 Piece Duct Cover to Extend up to 10' Ceilings, For P3248 series Hoods Only	21 lbs	\$386	\$551	\$648

P3200 Series Duct Cover for up to 12' Ceiling - ACCESSORY

Model	Color	Description	Approx. Weight	DLR PRICE	BDR	SSP
PDC3230	Stainless Steel ⁽¹⁾	2 Piece Duct Cover to Extend up to 12' Ceilings, For P3230 series Hoods Only	18 lbs	\$285	\$407	\$479
PDC3236	Stainless Steel ⁽¹⁾	2 Piece Duct Cover to Extend up to 12' Ceilings, For P3236 series Hoods Only	19 lbs	\$331	\$473	\$556
PDC3242	Stainless Steel ⁽¹⁾	2 Piece Duct Cover to Extend up to 12' Ceilings, For P3242 series Hoods Only	20 lbs	\$365	\$521	\$613
PDC3248	Stainless Steel ⁽¹⁾	2 Piece Duct Cover to Extend up to 12' Ceilings, For P3248 series Hoods Only	22 lbs	\$406	\$579	\$682

All Stainless Steel used by Trade-Wind is #304, #4 Standard Appliance Finish

(1) All visible components are Stainless Steel. Some non-visible parts are G90 Galvanized

August 1, 2022

ACCESSORIES



In-Line Blowers, Trade-Wind® Pro Series

Model	Color	Description	Approx. Weight	DLR PRICE	BDR	SSP
PSX006XL		In-Line Ventilator, 392 CFM, 6" Round Duct	11 lbs	\$326	\$465	\$548
PSD008XL		In-Line Ventilator, 836 CFM, 8" Round Duct	16 lbs	\$699	\$999	\$1,175
PSD010XL		In-Line Ventilator, 1266 CFM, 10" Round Duct	22 lbs	\$796	\$1,137	\$1,337

***NOTE: Trade-Wind® HIGHLY recommends using a duct silencer due to the high RPMs of these ventilators.

In-Line Duct Silencers, Trade-Wind® Pro Series

Duct Silencers reduce blower sounds transmitted "inside the duct" by more than 80%.



Model	Color	Description	Approx. Weight	DLR PRICE	BDR	SSP
PSS006XL		Duct Silencer for 6" Round Duct	15 lbs	\$154	\$221	\$259
PSS008XL		Duct Silencer for 8" Round Duct	23 lbs	\$180	\$257	\$302
PSS010XL		Duct Silencer for 10" Round Duct	35 lbs	\$288	\$412	\$485

Fast Clamps, Trade-Wind® Pro Series

Neoprene Lined Fast Clamps reduce Blower sounds transmitted "in the metal walls" of the duct.



Model	Color	Description	Approx. Weight	DLR PRICE	BDR	SSP
FC6		Noise Reduction Mounting Clamp, 6" Diameter, Two-Inch Galvanized Steel Band Lined with 3/8" Neoprene, 2 Per Box.	2 lbs	\$41	\$58	\$68
FC8		Noise Reduction Mounting Clamp, 8" Diameter, Two-Inch Galvanized Steel Band Lined with 3/8" Neoprene, 2 Per Box.	2 lbs	\$42	\$61	\$71
FC10		Noise Reduction Mounting Clamp, 10" Diameter, Two-Inch Galvanized Steel Band Lined with 3/8" Neoprene, 2 Per Box.	3 lbs	\$46	\$65	\$77

Dampers, Trade-Wind® Pro Series

Neoprene Seal Dampers eliminate metal on metal "clatter" sounds.



Model	Color	Description	Approx. Weight	DLR PRICE	BDR	SSP
DPR006		Damper for 6" Round Duct, Spring Loaded Butterfly-Type with Neoprene Seal	1 lb	\$42	\$61	\$71
DPR008		Damper for 8" Round Duct, Spring Loaded Butterfly-Type with Neoprene Seal	2 lbs	\$54	\$78	\$91
DPR010		Damper for 10" Round Duct, Spring Loaded Butterfly-Type with Neoprene Seal	2 lbs	\$66	\$95	\$111

ACCESSORIES

Commercial Style Baffle Filters, Trade-Wind® Pro Series

Model	Color	Description	Approx. Weight	DLR PRICE	BDR	SSP
3BL-33-605	Stainless Steel	12" x 14" Stainless Steel Commercial Style Baffle Filter for VSL 400 Series Liners, 18" Deep only.	3.5 lbs	\$92	\$131	\$154
3BL-33-606	Stainless Steel	12" x 14" Stainless Steel Commercial Style Baffle Filter for Outdoor BBQ Hoods: P7200, 7200(RD), and L7200 Series.	3.5 lbs	\$92	\$131	\$154
3BL-33-705	Stainless Steel	14" x 15" Stainless Steel Commercial Style Baffle Filter for Indoor Range Hoods: 3000, H3200, and P3200 Series	3.5 lbs	\$92	\$131	\$154

Replacement Remote Control

Model	Color	Description	Approx. Weight	DLR PRICE	BDR	SSP
2BA-22-012	Black	Replacement Remote Control for all -RC units, Indoor Liners/Hoods	2 lbs	\$75	\$107	\$125

Ductless Conversion Kit

Model	Color	Description	Approx. Weight	DLR PRICE	BDR	SSP
5BL-39-400-DCK		Ductless Conversion Kit for Recirculating Air for Models <i>VSL - 3 and 4 models only</i> Kit includes (2) Charcoal Filters w/(4) Brackets	2 lbs	\$66	\$95	\$111
5BL-39-400-DCK1		Ductless Conversion Kit for Recirculating Air for Models <i>VSLA482RC only</i> Kit includes (3) Charcoal Filters w/(6) Brackets	2 lbs	\$78	\$111	\$131
5BL-39-I30-DCK		Ductless Conversion Kit for Recirculating Air for Model <i>I3230 only</i> Kit includes (2) Charcoal Filters w/(8) Filter Clips	2 lbs	\$46	\$65	\$77
5BL-39-I36-DCK		Ductless Conversion Kit for Recirculating Air for Models <i>I3236 - 2 and 3 models only</i> Kit includes (2) Charcoal Filters w/(4) Brackets	2 lbs	\$64	\$92	\$108
5BL-33-300-DCK1		Ductless Conversion Kit for Recirculating Air for Models <i>H3200, P3200 & 3000</i> Kit includes (2) Charcoal Filters w/(4) Brackets	2 lbs	\$71	\$102	\$120

New High Velocity Roof Cap and Wall Cap

Model	Color	Description	Approx. Weight	DLR PRICE	BDR	SSP
3BL-35-485RC		HVRC10 - High Velocity Roof Cap 10"	10 lbs	\$271	\$388	\$456
3BL-35-484WC		HVWC10 - High Velocity Wall Cap 10"	10 lbs	\$207	\$296	\$348



WARRANTY

TRADE-WIND Kitchen Ventilation Products

What IS Covered:

Trade-Wind Manufacturing, LLC® warrants its Trade-Wind® Kitchen Ventilation Products to the original user, to be free of defects in materials and workmanship for three (3) years from the date of purchase.

Trade-Wind Manufacturing, LLC® at its option, will repair or replace the complete unit or any defective component without charge. This warranty may be voided if any unauthorized service, alterations, or repairs are made to the product.

What is NOT Covered:

- Normal maintenance and service of any product that has been subject to misuse, negligence, accident, or installation inconsistent with the recommended Trade-Wind® Installation Instructions and Trade-Wind® Best Practices Guidelines.
- Product used other than for normal in-home use or products used outside of the United States and Canada.
- Damage to the product caused by accident, fire, flood, or other acts of God.
- Service calls to educate the customer in the proper use and care of the product, change fuses, or to reset the circuit breakers.
- Service calls to correct faulty installation, such as, performance issues relating to improperly sized ducting or restrictive roof caps is not covered and will by default be charged back to the Homeowner.
- Light bulbs are not covered under warranty.

Trade-Wind Manufacturing, LLC® disclaims and excludes any liability for implied warranties or for incidental or consequential damages wherever permitted by law. There are no implied warranties of merchantability or fitness for a particular use or purpose. This warranty gives you specific legal rights and you may also have other rights, which vary from state to state.

For Service: If you need service on your Trade-Wind® Kitchen Ventilation Product, visit our website at: www.t-wusa.com and click on the warranty tab. Fill out the simple form providing the model number, serial number, date of purchase, and brief description of the problem. Proof of purchase will also be required.

Warranty Revised 6/11/18

Trade-Wind Manufacturing, LLC® has a policy of continuous improvements and reserves the right to modify (at any time and without notice) any or all of its products, features, designs, components and specifications. *For exact dimensions, see the Installation Instructions included with each product.* Some features may be slightly different than shown on product literature.



For more information, please contact your Trade-Wind® Representative



800 West Grant Street, Phoenix, AZ 85007
1-800-955-5737
602-900-8500
t-wusa.com



Typical Installation & Parts Selection List

For Trade-Wind® VSL Series Liners *Connected to In-Line or Remote Blowers**

Typical Installation	Installation Considerations
	<p>The following installation considerations pertain only to Trade-Wind liners connected to in-line or remote (roof top or wall mounted) blowers. For exact details, see the Installation Instructions included with each product. Trade-Wind also has a complete line of models with internal blowers delivering from 410 to 1360 CFM (see your dealer for details).</p> <p>Trade-Wind® ventilation systems for in-line and remote blowers can be installed in a variety of configurations. Although the in-line blower (see Item K) and duct silencer (I) shown in this example are drawn horizontally, they can be installed at any angle.</p> <p>Seven Recommendations for Quietest Possible Installation</p> <ol style="list-style-type: none"> 1. Include a <u>Duct Silencer</u> to absorb up to 70% of the motor noise transmitted inside the duct (Item I). 2. Include <u>Fast Clamps</u> to absorb most motor vibration noise transmitted by the metal walls of the duct (Item H). 3. Include a <u>Damper</u> with Neoprene® seal to avoid metal “clatter” when damper closes. 4. Trade-Wind’s <u>Full-size Filters</u> reduce air movement sound (Item B) 5. Consider the <u>distance Blower is from Liner</u> (see Item K or L) 6. <u>Variable Speed Control</u> reduces motor sound (see Item C) 7. Consider the <u>Duct Configuration</u> (see Items F, G & J)

Item	Installation Guide & Parts Selection List
A	Distance from VSL Liner to Cooking Surface Bottom of Liner should be 30” – 36” from cooking surface. Island installations should be no more than 30” if possible.
B	VSL400 Series Liners <ul style="list-style-type: none"> <input type="checkbox"/> VSL430-0-BF & VSL 430-0-22-BF, designed for 8” Duct & Accessories <input type="checkbox"/> VSL436-0-BF & VSL 436-0-22-BF, designed for 8” Duct & Accessories <input type="checkbox"/> VSL442-0-BF & VSL 442-0-22-BF, designed for 10” Duct & Accessories (\$ _____) <input type="checkbox"/> VSL448-0-BF & VSL 448-0-22-BF, designed for 10” Duct & Accessories <input type="checkbox"/> VSL454-0-BF & VSL 454-0-22-BF, designed for 10” Duct & Accessories <input type="checkbox"/> VSL460-0-BF & VSL 460-0-22-BF, designed for 10” Duct & Accessories
C	Fan Control Selection Variable-Speed Fan Control (\$ No Charge) ALL Trade-Wind® liners include a factory installed variable-speed fan control on new BF models that are designed for use with ALL Trade-Wind® PSD in-line Blowers.
D	Start Collar (Included) All Trade-Wind® liners include a factory installed start collar pre-welded to the liner. (\$ No Charge)
E	Damper Selection <ul style="list-style-type: none"> <input type="checkbox"/> DPR006, 6” butterfly damper with seal (\$ _____) <input type="checkbox"/> DPR008, 8” butterfly damper with seal (\$ _____) <input type="checkbox"/> DPR010, 10” butterfly damper with seal (\$ _____) The damper should be installed just above the perimeter of the heated space (the ceiling). This reduces the amount of cold or hot air traveling down the duct into the kitchen.

F	Duct Fittings (Duct Configuration) For best performance, duct pipe and fittings should be rigid metal and the same diameter as the duct pipe. Some installations may require small sections of metal flex duct. If possible, avoid “S” or back-to-back elbows. If multiple elbows must be used, work to place at least 24” between elbows. Duct fittings are typically supplied and installed by HVAC subcontractors.
G	Distance Between Elbow and Duct Silencer (Duct Configuration) To reduce turbulence and air-noise, the silencer should be installed at least twice the diameter of the duct from any elbow. - If using 8” duct, this length of duct should be at least 16”. - If using 10” duct, this length of duct should be at least 20”.
H	Fast Clamps <input type="checkbox"/> FC6, 6” Neoprene Lined Metal Clamps (\$ _____) <input type="checkbox"/> FC8, 8” Neoprene Lined Metal Clamps (\$ _____) <input type="checkbox"/> FC10, 10” Neoprene Lined Metal Clamps (\$ _____) The purpose of Fast Clamps is to reduce the motor vibration sound transmitted through the metal duct by replacing a small section of the duct with a section of vibration-absorbing Neoprene. Fast Clamps are sold in pairs and for best sound reduction, install one on each side of the blower or duct silencer. Attach the Fast Clamp to the blower with sheet-metal screws and tape. However, it is best to NOT screw the Fast Clamp to the duct pipe as this will create a continuous metal-to-metal contact. Also, for best sound reduction, the duct pipe should NOT touch the blower inlet collar inside of the Fast Clamp. This would also create metal-to-metal contact. If a duct silencer is included, it can be installed in the same manner.
I	Duct Silencer <input type="checkbox"/> PSS008, 8” Duct Silencer (\$ _____) <input type="checkbox"/> PSS010, 10” Duct Silencer (\$ _____) Duct silencers reduce the motor sound inside the duct by 65-80%! Although not required, if there is sufficient space, it is highly recommended that EVERY INSTALLATION include a duct silencer. For additional sound reduction, two silencers can be installed end-to-end. In installations requiring the blower be in a chase or wood-type hood over the range (e.g., no attic above the kitchen), the duct silencer will not be as effective in absorbing motor noise. In addition, there will likely be motor sound transmitted through the walls of the chase, bypassing the duct silencer. <i>Where possible—attic or remote installations are always recommended.</i> Duct silencers have no moving parts and can be attached with pipe strap to a structural support.
J	Duct Length between Duct Silencer and Blower (Duct Configuration) It is best to place the duct silencer within 2 - 4 feet of the blower for maximum noise reduction. For best sound reduction, do not fasten the silencer directly to inlet of the blower.
K	In-Line Blower (use only if roof or wall mounted remote blower is not used) <input type="checkbox"/> PSD006, 392 CFM, 6” Blower, Variable Speed Fan (will also need a 6” x 8” duct transition) (\$ _____) <input type="checkbox"/> PSD008, 836 CFM, 8” Blower, Variable Speed Fan (\$ _____) <input type="checkbox"/> PSD010, 1266 CFM, 10” Blower, Variable Speed Fan (\$ _____) _____ (other UL listed model). (\$ _____) For best efficiency, the in-line blower should be installed near or slightly beyond the mid-point of the overall venting system. However, the further the in-line blower is installed from the liner, the quieter the installation will be. DO NOT attach the blower directly to the liner. If a 3-speed blower is used, the variable-speed control should be replaced with a 3-speed switch provided by others (Item C). Trade-Wind® variable-speed, in-line blowers are to be wired directly to the liner’s variable-speed fan control. The in-line blower’s mounting brackets are designed for flexible and easy installation at any angle—horizontal, vertical or diagonal. The brackets should be bolted directly to a 2” x 4” type wood framing structure (e.g., an attic truss) or suspended by threaded rod or angle iron. The installation should be sufficient to support the blower’s weight.
L	Roof or Wall Mounted Remote Blower (include ONLY if in-line blower is not used) <input type="checkbox"/> _____ (Other UL listed brand) (\$ _____) If a 3-speed roof or wall-mounted blower is used, it is necessary to use a 3-speed fan control (Item C). <input type="checkbox"/> Roof Cap or Wall Cap Use an 8” or 10” roof or wall cap, if remote blower is not used. (\$ _____) (Supplied by others)

These guidelines are the manufacturer’s suggestions. Always observe local municipal and state building codes. Trade-Wind has a policy of continuous improvements and reserves the right to modify at any time, without notice, any of its products, features, designs, components and specifications. For exact dimensions, see the Installation Instructions included with each product. Some features may be slightly different than shown on product literature.

For questions regarding these products or copies of Installation Instructions, contact your Trade-Wind® Dealer or Customer Service at T-WUSA.com