

TRADE-WIND

Hoods • Liners • Fans

Retail Pricing Effective November 01, 2021

Builder Schedule Code: TD



4960 Golden Pkwy, Bldg. #3A, Buford, Georgia 30518 • 800.241.9152
www.middlebyresidential.com

November 01, 2021

Table of Contents

INDOOR HOODS INSERTS	3
LINERS	
VSL 400 SERIES LINERS (NEW 19 1/4" DEPTH MODELS)	
VSL 30" Liners	4
VSL 36" Liners	8
VSL 42" Liners	8
VSL 48" Liners	10
VSL 54" Liners	12
VSL 60" Liners	13
VSL 72" Liners	14
BARBECUE (OUTDOOR) VENTILATION	
BARBECUE HOODS	15
P7200 Series BBQ Hoods	
w/ corresponding duct covers	
7200 Series BBQ Hoods- <i>Limited to supplies on hand</i>	15
S7200CD Series BBQ Hoods (Convertible Discharge, Top or Rear)	17
w/ corresponding duct covers for 7200 & S7200CD Series	19
BARBECUE LINERS 7200 SERIES ISLAND HOODS (NEW)	
T-SHAPED BBQ HOODS	
Duct Covers P7200 Series	21
L7200 Series BBQ Liners	23
INDOOR RANGE HOODS	
Slim Line Series - 3000	
w/ corresponding duct covers	24
H3200 Series Range Hoods	25
P3200 Series Range Hoods	26
Duct Covers P3200 Series	27
ACCESSORIES & OPTIONS	
IN-LINE BLOWERS, TRADE-WIND® PRO SERIES	28
IN-LINE DUCT SILENCERS, TRADE-WIND® PRO SERIES	28
FAST CLAMPS, TRADE-WIND® PRO SERIES	28
DAMPERS, TRADE-WIND® PRO SERIES	28
COMMERCIAL BAFFLE FILTERS, TRADE-WIND® PRO SERIES	29
REPLACEMENT REMOTE CONTROL	29
DUCTLESS CONVERSION KIT	29
WARRANTY	30
TYPICAL INSTALLATION & PARTS SELECTION LIST (IN-LINE BLOWERS)	31

INDOOR HOOD INSERTS

HOOD INSERT SERIES

- **INDOOR HOOD INSERTS FOR UNDER CABINET INSTALLATION**
- Available in 30" and 36" widths (36" model comes with Remote Control)
- 3 Speed Motor Control For Internal Blowers
- LED Light (Bulb Included)
- Full-Filter Bottom using #304 Grade Stainless Steel with brush finish



Model	Color	Description	Approx. Weight	BDR	SSP
I32302		30" Insert - 28 3/8" Wide - Internal 290 CFM - 3 Speed Rotary Control For Blower - LED Light (Bulb Included) Equals 50 Watt Halogen - Perforated Stainless Steel Filters - 6" Round Start Collar	28 lbs	\$445	\$524
I32303		30" Insert - 28 3/8" Wide - Internal 390 CFM - 3 Speed Rotary Control For Blower - LED Light (Bulb Included) Equals 50 Watt Halogen - Perforated Stainless Steel Filters - 7" Round Start Collar	28 lbs	\$467	\$550
I32362RC		36" Insert - 34 3/8" Wide - Internal 290 CFM - 3 Speed Touch Button Control For Blower and Light, with Remote Control - LED Light (Bulb Included) Equals 50 Watt Halogen - Stainless Steel Baffle Filters - 6" Round Start Collar	32 lbs	\$566	\$665
I32363RC		36" Insert - 34 3/8" Wide - Internal 390 CFM - 3 Speed Touch Button Control For Blower and Light, with Remote Control - LED Light (Bulb Included) Equals 50 Watt Halogen - Stainless Steel Baffle Filters - 7" Round Start Collar	32 lbs	\$587	\$691
I32366RC		36" Insert - 34 3/8" Wide - Internal 600 CFM - 3 Speed Touch Button Control For Blower and Light, with Remote Control - LED Light (Bulb Included) Equals 50 Watt Halogen - Stainless Steel Baffle Filters - 8" Round Start Collar	35 lbs	\$670	\$789

****Note: New Recirculation Kit for I32302 & I32303 is on pg. 29**



30" VSL (VERY SPECIAL LINERS) for WOOD HOODS

VSL Liners with either INTERNAL Blower or Controls for EXTERNAL Blowers (Roof Top, Wall, or In-Line)

- **NEW Remote Control with optional automatic 5 minute shut off timer**
- INTERNAL BLOWER(S) have Electronic, 3 speed Touch Buttons for Fan and Light Control
- EXTERNAL BLOWER(S) have 5 Amp Variable, Infinite Control for Lights and Blower
- *Ductless Conversion Kits are available for -3 and -4 models only; see Accessories Section*

Model	Color	Description	Approx. Weight	BDR	SSP
VSL4302RC	Stainless Steel(1)	28.3/8" wide x 18" deep Wood Hood Liner with a 290 CFM INTERNAL BLOWER - Does NOT require Make Up Air - Electronic, 3 speed Touch button control for Blower and lights, with Remote Control - 2 LED Lights (Bulbs Included) - 2 #304 Grade Stainless Steel Baffle Filters - 6" Round Start Collar	30 lbs	\$587	\$691
VSL4303RC	Stainless Steel(1)	28.3/8" wide x 18" deep Wood Hood Liner with a 390 CFM INTERNAL BLOWER - Does NOT require Make Up Air - Electronic, 3 speed Touch button control for Blower and lights, with Remote Control - 2 LED Lights (Bulbs Included) - 2 #304 Grade Stainless Steel Baffle Filters - 7" Round Start Collar	30 lbs	\$587	\$691
VSL430319RC	Stainless Steel(1)	28.3/8" wide x 19.1/4" deep Wood Hood Liner with a 390 CFM INTERNAL BLOWER - Does NOT require Make Up Air - Electronic, 3 speed Touch button control for Blower and lights, with Remote Control - 2 LED Lights (Bulbs Included) - 2 #304 Grade Stainless Steel Baffle Filters - 7" Round Start Collar	30 lbs	\$635	\$747
VSL4304RC	Stainless Steel(1)	28.3/8" wide x 18" deep Wood Hood Liner with a 390 CFM INTERNAL BLOWER - Does NOT require Make Up Air - Electronic, 3 speed Touch button control for Blower and lights, with Remote Control - 2 LED Lights (Bulbs Included) - 2 #304 Grade Stainless Steel Baffle Filters - 3-1/4" x 10" Rectangle Start Collar	31 lbs	\$587	\$691
VSL4306RC	Stainless Steel(1)	28.3/8" wide x 18" deep Wood Hood Liner with a 600 CFM INTERNAL BLOWER - Electronic, 3 speed Touch button control for Blower and light. with Remote Control - 2 LED Lights (Bulbs Included) - 2 #304 Grade Stainless Steel Baffle Filters - 8" Round Start Collar	31 lbs	\$801	\$943

All Stainless Steel used by Trade-Wind is #304, #4 Standard Appliance Finish

(1) All visible components are Stainless Steel. Some non-visible parts are G90 Galvanized



30" VSL (VERY SPECIAL LINERS) for WOOD HOODS

VSL Liners with either INTERNAL Blower or Controls for EXTERNAL Blowers (Roof Top, Wall, or In-Line)

- **NEW Remote Control with optional automatic 5 minute shut off timer**
- INTERNAL BLOWER(S) have Electronic, 3 speed Touch Buttons for Fan and Light Control
- EXTERNAL BLOWER(S) have 5 Amp Variable, Infinite Control for Lights and Blower
- *Ductless Conversion Kits are available for -3 and -4 models only; see Accessories Section*

Model	Color	Description	Approx. Weight	BDR	SSP
VSL430619RC	Stainless Steel(1)	28.3/8" wide x 19.1/4" deep Wood Hood Liner with a 600 CFM INTERNAL BLOWER - Electronic, 3 speed Touch button control for Blower and light. with Remote Control - 2 LED Lights (Bulbs Included) - 2 #304 Grade Stainless Steel Baffle Filters - 8" Round Start Collar	31 lbs	\$953	\$1,121
VSL430BF	Stainless Steel(1)	28.3/8" wide x 18" deep Wood Hood Liner for EXTERNAL BLOWER (not included) - 5 Amp Variable, Infinite control for external blower - No Remote Control available with external blower - 2 LED Lights (Bulbs Included) - 2 #304 Grade Stainless Steel Baffle Filters - 8" Round Start Collar	21 lbs	\$421	\$496

All Stainless Steel used by Trade-Wind is #304, #4 Standard Appliance Finish

(1) All visible components are Stainless Steel. Some non-visible parts are G90 Galvanized

LINERS

36" VSL (VERY SPECIAL LINERS) for WOOD HOODS

VSL Liners with either INTERNAL Blower or Controls for EXTERNAL Blowers (Roof Top, Wall, or In-Line)

- **NEW Remote Control with optional automatic 5 minute shut off timer**
- INTERNAL BLOWER(S) have Electronic, 3 speed Touch Buttons for Fan and Light Control
- EXTERNAL BLOWER(S) have 5 Amp Variable, Infinite Control for Lights and Blower
- *Ductless Conversion Kits are available for -3 and -4 models only; see Accessories Section*

Model	Color	Description	Approx. Weight	BDR	SSP
VSL4362RC	Stainless Steel(1)	34.3/8" wide x 18" deep Wood Hood Liner with a 290 CFM INTERNAL BLOWER - Does NOT require Make Up Air - Electronic, 3 speed Touch button control for Blower and lights, with Remote Control - 2 LED Lights (Bulbs Included) - 2 #304 Grade Stainless Steel Baffle Filters - 6" Round Start Collar	39 lbs	\$646	\$760
VSL4363RC	Stainless Steel(1)	34.3/8" wide x 18" deep Wood Hood Liner with a 390 CFM INTERNAL BLOWER - Does NOT require Make Up Air - Electronic, 3 speed Touch button control for Blower and lights, with Remote Control - 2 LED Lights (Bulbs Included) - 2 #304 Grade Stainless Steel Baffle Filters - 7" Round Start Collar	39 lbs	\$646	\$760
VSL436319RC	Stainless Steel(1)	34 3/8" wide x 19.1/4" deep Wood Hood Liner with a 390 CFM INTERNAL BLOWER - Does NOT require Make Up Air - Electronic, 3 speed Touch button control for Blower and lights, with Remote Control - 2 LED Lights (Bulbs Included) - 2 #304 Grade Stainless Steel Baffle Filters - 7" Round Start Collar	39 lbs	\$793	\$933
VSL4364RC	Stainless Steel(1)	34.3/8" wide x 18" deep Wood Hood Liner with a 390 CFM INTERNAL BLOWER - Does NOT require Make Up Air - Electronic, 3 speed Touch button control for Blower and lights, with Remote Control - 2 LED Lights (Bulbs Included) - 2 #304 Grade Stainless Steel Baffle Filters - 3-1/4" x 10" Rectangle Start Collar	40 lbs	\$646	\$760
VSL4366RC	Stainless Steel(1)	34.3/8" wide x 18" deep Wood Hood Liner with a 600 CFM INTERNAL BLOWER - Electronic, 3 speed Touch button control for Blower and lights, with Remote Control - 2 LED Lights (Bulbs Included) - 2 #304 Grade Stainless Steel Baffle Filters - 8" Round Start Collar	40 lbs	\$860	\$1,012
VSL436619RC	Stainless Steel(1)	34.3/8" wide x 19.1/4" deep Wood Hood Liner with a 600 CFM INTERNAL BLOWER - Electronic, 3 speed Touch button control for Blower and lights, with Remote Control - 2 LED Lights (Bulbs Included) - 2 #304 Grade Stainless Steel Baffle Filters - 8" Round Start Collar	40 lbs	\$994	\$1,169
VSL436622RC	Stainless Steel(1)	34.3/8" wide x 22" deep Wood Hood Liner with a 600 CFM INTERNAL BLOWER - Electronic, 3 speed Touch button control for Blower and lights, with Remote Control - 2 LED Lights (Bulbs Included) - 2 #304 Grade Stainless Steel Baffle Filters - 8" Round Start Collar	46 lbs	\$1,063	\$1,251

All Stainless Steel used by Trade-Wind is #304, #4 Standard Appliance Finish

(1) All visible components are Stainless Steel. Some non-visible parts are G90 Galvanized

November 01, 2021

LINERS

36" VSL (VERY SPECIAL LINERS) for WOOD HOODS

VSL Liners with either INTERNAL Blower or Controls for EXTERNAL Blowers (Roof Top, Wall, or In-Line)

- **NEW Remote Control with optional automatic 5 minute shut off timer**
- INTERNAL BLOWER(S) have Electronic, 3 speed Touch Buttons for Fan and Light Control
- EXTERNAL BLOWER(S) have 5 Amp Variable, Infinite Control for Lights and Blower
- *Ductless Conversion Kits are available for -3 and -4 models only; see Accessories Section*

Model	Color	Description	Approx. Weight	BDR	SSP
VSL436BF	Stainless Steel(1)	34.3/8" wide x 18" deep Wood Hood Liner for EXTERNAL BLOWER (not included) - 5Amp Variable, Infinite control for external blower - No Remote Control available with external blower - 2 LED Lights (Bulbs Included) - 2 #304 Grade Stainless Steel Baffle Filters - 8" Round Start Collar	30 lbs	\$483	\$568
VSL436-0-19-BF	Stainless Steel(1)	34.3/8" wide x 19.1/4" deep Wood Hood Liner for EXTERNAL BLOWER (not included) - 5Amp Variable, Infinite control for external blower - No Remote Control available with external blower - 2 LED Lights (Bulbs Included) - 2 #304 Grade Stainless Steel Baffle Filters - 8" Round Start Collar	30 lbs	\$529	\$622
VSL436-0-22BF	Stainless Steel(1)	34.3/8" wide x 22" deep Wood Hood Liner for EXTERNAL BLOWER (not included) - 5Amp Variable, Infinite control for external blower - No Remote Control available with external blower - 2 LED Lights (Bulbs Included) - 2 #304 Grade Stainless Steel Baffle Filters - 8" Round Start Collar	31 lbs	\$566	\$665

42" VSL (VERY SPECIAL LINERS) for WOOD HOODS

VSL Liners with either INTERNAL Blower(s) or Controls for EXTERNAL Blowers (Roof Top, Wall, or In-Line)

- **NEW Remote Control with optional automatic 5 minute shut off timer**
- INTERNAL BLOWER(S) have Electronic, 3 speed Touch Buttons for Fan and Light Control
- EXTERNAL BLOWER(S) have 5 Amp Variable, Infinite Control for Lights and Blower
- *Ductless Conversion Kits are available for -3 and -4 models only; see Accessories Section*

Model	Color	Description	Approx. Weight	BDR	SSP
VSL4422RC	Stainless Steel(1)	40.3/8" wide x 18" deep Wood Hood Liner with a 290 CFM INTERNAL BLOWER - Does NOT require Make Up Air - Electronic, 3 speed Touch button control for Blower and lights, with Remote Control - 2 LED Lights (Bulbs Included) - 2 #304 Grade Stainless Steel Baffle Filters - 6" Round Start Collar	42 lbs	\$716	\$843
VSL4423RC	Stainless Steel(1)	40.3/8" wide x 18" deep Wood Hood Liner with a 390 CFM INTERNAL BLOWER - Does NOT require Make Up Air - Electronic, 3 speed Touch button control for Blower and lights, with Remote Control - 2 LED Lights (Bulbs Included) - 2 #304 Grade Stainless Steel Baffle Filters - 7" Round Start Collar	42 lbs	\$716	\$843
VSL4424RC	Stainless Steel(1)	40.3/8" wide x 18" deep Wood Hood Liner with a 390 CFM INTERNAL BLOWER - Does NOT require Make Up Air - Electronic, 3 speed Touch button control for Blower and lights, with Remote Control - 2 LED Lights (Bulbs Included) - 2 #304 Grade Stainless Steel Baffle Filters - 3-1/4" x 10" Rectangle Start Collar	43 lbs	\$716	\$843
VSL4426RC	Stainless Steel(1)	40.3/8" wide x 18" deep Wood Hood Liner with a 600 CFM INTERNAL BLOWER - Electronic, 3 speed Touch button control for Blower and lights, with Remote Control - 2 LED Lights (Bulbs Included) - 2 #304 Grade Stainless Steel Baffle Filters - 8" Round Start Collar	43 lbs	\$913	\$1,074
VSL442619RC	Stainless Steel(1)	40.3/8" wide x 19.1/4" deep Wood Hood Liner with a 600 CFM INTERNAL BLOWER - Electronic, 3 speed Touch button control for Blower and lights, with Remote Control - 2 LED Lights (Bulbs Included) - 2 #304 Grade Stainless Steel Baffle Filters - 8" Round Start Collar	43 lbs	\$1,045	\$1,229
VSL442622RC	Stainless Steel(1)	40.3/8" wide x 22" deep Wood Hood Liner with a 600 CFM INTERNAL BLOWER - Electronic, 3 speed Touch button control for Blower and lights, with Remote Control - 2 LED Lights (Bulbs Included) - 2 #304 Grade Stainless Steel Baffle Filters - 8" Round Start Collar	49 lbs	\$1,118	\$1,315
VSL44212RC	Stainless Steel(1)	40.3/8" wide x 18" deep Wood Hood Liner with a 1200 CFM INTERNAL BLOWERS - Electronic, 3 speed Touch button control for Blowers and lights, with Remote Control - 2 LED Lights (Bulbs Included) - 2 #304 Grade Stainless Steel Baffle Filters - 10" Round Start Collar, Welded Transition Included	55 lbs	\$1,149	\$1,351

All Stainless Steel used by Trade-Wind is #304, #4 Standard Appliance Finish

(1) All visible components are Stainless Steel. Some non-visible parts are G90 Galvanized

42" VSL (VERY SPECIAL LINERS) for WOOD HOODS

VSL Liners with either INTERNAL Blower(s) or Controls for EXTERNAL Blowers (Roof Top, Wall, or In-Line)

- **NEW Remote Control with optional automatic 5 minute shut off timer**
- INTERNAL BLOWER(S) have Electronic, 3 speed Touch Buttons for Fan and Light Control
- EXTERNAL BLOWER(S) have 5 Amp Variable, Infinite Control for Lights and Blower
- *Ductless Conversion Kits are available for -3 and -4 models only; see Accessories Section*

Model	Color	Description	Approx. Weight	BDR	SSP
VSL4421219RC	Stainless Steel(1)	40.3/8" wide x 19.1/4" deep Wood Hood Liner with a 1200 CFM INTERNAL BLOWERS - Electronic, 3 speed Touch button control for Blowers and lights, with Remote Control - 2 LED Lights (Bulbs Included) - 2 #304 Grade Stainless Steel Baffle Filters - 10" Round Start Collar, Welded Transition Included	55 lbs	\$1,263	\$1,486
VSL4421222RC	Stainless Steel(1)	40.3/8" wide x 22" deep Wood Hood Liner with a 1200 CFM INTERNAL BLOWERS - Electronic, 3 speed Touch button control for Blowers and lights, with Remote Control - 2 LED Lights (Bulbs Included) - 2 #304 Grade Stainless Steel Baffle Filters - 10" Round Start Collar, (No Transition Required)	62 lbs	\$1,352	\$1,590
VSL442BF	Stainless Steel(1)	40.3/8" wide x 18" deep Wood Hood Liner for EXTERNAL BLOWER (not included) - 5Amp Variable, Infinite control for external blower - No Remote Control available with external blower - 2 LED Lights (Bulbs Included) - 2 #304 Grade Stainless Steel Baffle Filters - 10" Round Start Collar (No Transition Required)	33 lbs	\$539	\$635
VSL442-0-19BF	Stainless Steel(1)	40.3/8" wide x 19.1/4" deep Wood Hood Liner for EXTERNAL BLOWER (not included) - 5Amp Variable, Infinite control for external blower - No Remote Control available with external blower - 2 LED Lights (Bulbs Included) - 2 #304 Grade Stainless Steel Baffle Filters - 10" Round Start Collar (No Transition Required)	33 lbs	\$590	\$694
VSL442-0-22-BF	Stainless Steel(1)	40.3/8" wide x 22" deep Wood Hood Liner for EXTERNAL BLOWER (not included) - 5Amp Variable, Infinite control for external blower - No Remote Control available with external blower - 2 LED Lights (Bulbs Included) - 2 #304 Grade Stainless Steel Baffle Filters - 10" Round Start Collar (No Transition Required)	34 lbs	\$631	\$742

All Stainless Steel used by Trade-Wind is #304, #4 Standard Appliance Finish

(1) All visible components are Stainless Steel. Some non-visible parts are G90 Galvanized

48" VSL (VERY SPECIAL LINERS) for WOOD HOODS

VSL Liners with either INTERNAL Blower(s) or Controls for EXTERNAL Blowers (Roof Top, Wall, or In-Line)

- **NEW Remote Control with optional automatic 5 minute shut off timer**
- INTERNAL BLOWER(S) have Electronic, 3 speed Touch Buttons for Fan and Light Control
- EXTERNAL BLOWER(S) have 5 Amp Variable, Infinite Control for Lights and Blower
- *Ductless Conversion Kits are available for -3 and -4 models only; see Accessories Section*

Model	Color	Description	Approx. Weight	BDR	SSP
VSL4482RC	Stainless Steel(1)	46.3/8" wide x 18" deep Wood Hood Liner with a 290 CFM INTERNAL BLOWER - Electronic, 3 speed Touch button control for Blower and lights, with Remote Control - 3 LED Lights (Bulbs Included) - 3 #304 Grade Stainless Steel Baffle Filters - 6" Round Start Collar	45 lbs	\$895	\$1,053
VSL4486RC	Stainless Steel(1)	46.3/8" wide x 18" deep Wood Hood Liner with a 600 CFM INTERNAL BLOWER - Electronic, 3 speed Touch button control for Blower and lights, with Remote Control - 3 LED Lights (Bulbs Included) - 3 #304 Grade Stainless Steel Baffle Filters - 8" Round Start Collar	45 lbs	\$1,053	\$1,238
VSL448619RC	Stainless Steel(1)	46.3/8" wide x 19.1/4" deep Wood Hood Liner with a 600 CFM INTERNAL BLOWER - Electronic, 3 speed Touch button control for Blower and lights, with Remote Control - 3 LED Lights (Bulbs Included) - 3 #304 Grade Stainless Steel Baffle Filters - 8" Round Start Collar	45 lbs	\$1,139	\$1,340
VSL448622RC	Stainless Steel(1)	46.3/8" wide x 22" deep Wood Hood Liner with a 600 CFM INTERNAL BLOWER - Electronic, 3 speed Touch button control for Blower and lights, with Remote Control - 3 LED Lights (Bulbs Included) - 3 #304 Grade Stainless Steel Baffle Filters - 8" Round Start Collar	46 lbs	\$1,218	\$1,434
VSL44812RC	Stainless Steel(1)	46.3/8" wide x 18" deep Wood Hood Liner with a 1200 CFM INTERNAL BLOWERS - Electronic, 3 speed Touch button control for Blowers and lights, with Remote Control - 3 LED Lights (Bulbs Included) - 3 #304 Grade Stainless Steel Baffle Filters - 10" Round Start Collar, Welded Transition Included	57 lbs	\$1,286	\$1,513
VSL4481219RC	Stainless Steel(1)	46.3/8" wide x 19.1/4" deep Wood Hood Liner with a 1200 CFM INTERNAL BLOWERS - Electronic, 3 speed Touch button control for Blowers and lights, with Remote Control - 3 LED Lights (Bulbs Included) - 3 #304 Grade Stainless Steel Baffle Filters - 10" Round Start Collar, Welded Transition Included	57 lbs	\$1,306	\$1,537
VSL4481222RC	Stainless Steel(1)	46.3/8" wide x 22" deep Wood Hood Liner with a 1200 CFM INTERNAL BLOWERS - Electronic, 3 speed Touch button control for Blowers and lights, with Remote Control - 3 LED Lights (Bulbs Included) - 3 #304 Grade Stainless Steel Baffle Filters - 10" Round Start Collar (No Transition Required)	63 lbs	\$1,398	\$1,644

All Stainless Steel used by Trade-Wind is #304, #4 Standard Appliance Finish
 (1) All visible components are Stainless Steel. Some non-visible parts are G90 Galvanized

48" VSL (VERY SPECIAL LINERS) for WOOD HOODS (Continued)

VSL Liners with either INTERNAL Blower(s) or Controls for EXTERNAL Blowers (Roof Top, Wall, or In-Line)

- **NEW Remote Control with optional automatic 5 minute shut off timer**
- INTERNAL BLOWER(S) have Electronic, 3 speed Touch Buttons for Fan and Light Control
- EXTERNAL BLOWER(S) have 5 Amp Variable, Infinite Control for Lights and Blower
- *Ductless Conversion Kits are available for -3 and -4 models only; see Accessories Section*

Model	Color	Description	Approx. Weight	BDR	SSP
VSL448BF	Stainless Steel(1)	46.3/8" wide x 18" deep Wood Hood Liner for EXTERNAL BLOWER (not included) - 5Amp Variable, Infinite control for external blower - No Remote Control available with external blower - 3 LED Lights (Bulbs Included) - 3 #304 Grade Stainless Steel Baffle Filters - 10" Round Start Collar (No Transition Required)	36 lbs	\$614	\$722
VSL448-0-19BF	Stainless Steel(1)	46.3/8" wide x 19.1/4" deep Wood Hood Liner for EXTERNAL BLOWER (not included) - 5Amp Variable, Infinite control for external blower - No Remote Control available with external blower - 3 LED Lights (Bulbs Included) - 3 #304 Grade Stainless Steel Baffle Filters - 10" Round Start Collar (No Transition Required)	36 lbs	\$682	\$802
VSL448-0-22BF	Stainless Steel(1)	46.3/8" wide x 22" deep Wood Hood Liner for EXTERNAL BLOWER (not included) - 5Amp Variable, Infinite control for external blower - No Remote Control available with external blower - 3 LED Lights (Bulbs Included) - 3 #304 Grade Stainless Steel Baffle Filters - 10" Round Start Collar (No Transition Required)	37 lbs	\$729	\$858

All Stainless Steel used by Trade-Wind is #304, #4 Standard Appliance Finish

(1) All visible components are Stainless Steel. Some non-visible parts are G90 Galvanized

LINERS

54" VSL (VERY SPECIAL LINERS) for WOOD HOODS

VSL Liners with either INTERNAL Blower(s) or Controls for EXTERNAL Blowers (Roof Top, Wall, or In-Line)

- **NEW Remote Control with optional automatic 5 minute shut off timer**
- INTERNAL BLOWER(S) have Electronic, 3 speed Touch Buttons for Fan and Light Control
- EXTERNAL BLOWER(S) have 5 Amp Variable, Infinite Control for Lights and Blower
- *Ductless Conversion Kits are available for -3 and -4 models only; see Accessories Section*

Model	Color	Description	Approx. Weight	BDR	SSP
VSL45412RC	Stainless Steel(1)	52.3/8" wide x 18" deep Wood Hood Liner with a 1200 CFM INTERNAL BLOWERS - Electronic, 3 speed Touch button control for Blowers and lights, with Remote Control - 3 LED Lights (Bulbs Included) - 3 #304 Grade Stainless Steel Baffle Filters - 10" Round Start Collar, Welded Transition Included	59 lbs	\$1,367	\$1,608
VSL4541219RC	Stainless Steel(1)	52.3/8" wide x 19.1/4" deep Wood Hood Liner with a 1200 CFM INTERNAL BLOWERS - Electronic, 3 speed Touch button control for Blowers and lights, with Remote Control - 3 LED Lights (Bulbs Included) - 3 #304 Grade Stainless Steel Baffle Filters - 10" Round Start Collar, Welded Transition Included	59 lbs	\$1,373	\$1,616
VSL4541222RC	Stainless Steel(1)	52.3/8" wide x 22" deep Wood Hood Liner with a 1200 CFM INTERNAL BLOWERS - Electronic, 3 speed Touch button control for Blowers and lights, with Remote Control - 3 LED Lights (Bulbs Included) - 3 #304 Grade Stainless Steel Baffle Filters - 10" Round Start Collar (No Transition Required)	65 lbs	\$1,470	\$1,729
VSL454BF	Stainless Steel(1)	52.3/8" wide x 18" deep Wood Hood Liner for EXTERNAL BLOWER (not included) - 5Amp Variable, Infinite control for external blower - No Remote Control available with external blower - 3 LED Lights (Bulbs Included) - 3 #304 Grade Stainless Steel Baffle Filters - 10" Round Start Collar (No Transition Required)	45 lbs	\$686	\$807
VSL454-0-19BF	Stainless Steel(1)	52.3/8" wide x 19.1/4" deep Wood Hood Liner for EXTERNAL BLOWER (not included) - 5Amp Variable, Infinite control for external blower - No Remote Control available with external blower - 3 LED Lights (Bulbs Included) - 3 #304 Grade Stainless Steel Baffle Filters - 10" Round Start Collar (No Transition Required)	45 lbs	\$729	\$857
VSL454-0-22BF	Stainless Steel(1)	52.3/8" wide x 22" deep Wood Hood Liner for EXTERNAL BLOWER (not included) - 5Amp Variable, Infinite control for external blower - No Remote Control available with external blower - 3 LED Lights (Bulbs Included) - 3 #304 Grade Stainless Steel Baffle Filters - 10" Round Start Collar (No Transition Required)	52 lbs	\$780	\$917

All Stainless Steel used by Trade-Wind is #304, #4 Standard Appliance Finish

(1) All visible components are Stainless Steel. Some non-visible parts are G90 Galvanized

November 01, 2021

60" VSL (VERY SPECIAL LINERS) for WOOD HOODS

VSL Liners with either INTERNAL Blower(s) or Controls for EXTERNAL Blowers (Roof Top, Wall, or In-Line)

- **NEW Remote Control with optional automatic 5 minute shut off timer**
- INTERNAL BLOWER(S) have Electronic, 3 speed Touch Buttons for Fan and Light Control
- EXTERNAL BLOWER(S) have 5 Amp Variable, Infinite Control for Lights and Blower
- *Ductless Conversion Kits are available for -3 and -4 models only; see Accessories Section*

Model	Color	Description	Approx. Weight	BDR	SSP
VSL46012RC	Stainless Steel(1)	58.3/8" wide x 18" deep Wood Hood Liner with a 1200 CFM INTERNAL BLOWERS - Electronic, 3 speed Touch button control for Blowers and lights, with Remote Control - 3 LED Lights (Bulbs Included) - 3 #304 Grade Stainless Steel Baffle Filters - 10" Round Start Collar, Welded Transition Included	62 lbs	\$1,481	\$1,742
VSL4601219RC	Stainless Steel(1)	58.3/8" wide x 19.1/4" deep Wood Hood Liner with a 1200 CFM INTERNAL BLOWERS - Electronic, 3 speed Touch button control for Blowers and lights, with Remote Control - 3 LED Lights (Bulbs Included) - 3 #304 Grade Stainless Steel Baffle Filters - 10" Round Start Collar, Welded Transition Included	62 lbs	\$1,457	\$1,714
VSL4601222RC	Stainless Steel(1)	58.3/8" wide x 22" deep Wood Hood Liner with a 1200 CFM INTERNAL BLOWERS - Electronic, 3 speed Touch button control for Blowers and lights, with Remote Control - 3 LED Lights (Bulbs Included) - 3 #304 Grade Stainless Steel Baffle Filters - 10" Round Start Collar (No Transition Required)	67 lbs	\$1,559	\$1,834
VSL460BF	Stainless Steel(1)	58.3/8" wide x 18" deep Wood Hood Liner for EXTERNAL BLOWER (not included) - 5Amp Variable, Infinite control for external blower - No Remote Control available with external blower - 3 LED Lights (Bulbs Included) - 3 #304 Grade Stainless Steel Baffle Filters - 10" Round Start Collar (No Transition Required)	47 lbs	\$758	\$891
VSL460-0-19BF	Stainless Steel(1)	58.3/8" wide x 19.1/4" deep Wood Hood Liner for EXTERNAL BLOWER (not included) - 5Amp Variable, Infinite control for external blower - No Remote Control available with external blower - 3 LED Lights (Bulbs Included) - 3 #304 Grade Stainless Steel Baffle Filters - 10" Round Start Collar (No Transition Required)	47 lbs	\$753	\$886
VSL460-0-22BF	Stainless Steel(1)	58.3/8" wide x 22" deep Wood Hood Liner for EXTERNAL BLOWER (not included) - 5Amp Variable, Infinite control for external blower - No Remote Control available with external blower - 3 LED Lights (Bulbs Included) - 3 #304 Grade Stainless Steel Baffle Filters - 10" Round Start Collar (No Transition Required)	53 lbs	\$806	\$948

All Stainless Steel used by Trade-Wind is #304, #4 Standard Appliance Finish

(1) All visible components are Stainless Steel. Some non-visible parts are G90 Galvanized

November 01, 2021

LINERS

72" VSL (VERY SPECIAL LINERS) for WOOD HOODS

VSL Liners with either INTERNAL Blower(s) or Controls for EXTERNAL Blowers (Roof Top, Wall, or In-Line)

- **NEW Remote Control with optional automatic 5 minute shut off timer**
- INTERNAL BLOWER(S) have Electronic, 3 speed Touch Buttons for Fan and Light Control
- EXTERNAL BLOWER(S) have 5 Amp Variable, Infinite Control for Lights and Blower
- *Ductless Conversion Kits are available for -3 and -4 models only; see Accessories Section*

Model	Color	Description	Approx. Weight	BDR	SSP
VSL47212RC	Stainless Steel(1)	70.3/8" wide x 18" deep Wood Hood Liner with a 1200 CFM INTERNAL BLOWERS - Electronic, 3 speed Touch button control for Blowers and lights, with Remote Control - 3 LED Lights (Bulbs Included) - 4 #304 Grade Stainless Steel Baffle Filters - 10" Round Start Collar, Welded Transition Included	67 lbs	\$1,867	\$2,197
VSL4721219RC	Stainless Steel(1)	70.3/8" wide x 19.1/4" deep Wood Hood Liner with a 1200 CFM INTERNAL BLOWERS - Electronic, 3 speed Touch button control for Blowers and lights, with Remote Control - 3 LED Lights (Bulbs Included) - 4 #304 Grade Stainless Steel Baffle Filters - 10" Round Start Collar, Welded Transition Included	69 lbs	\$1,766	\$2,078
VSL4721222RC	Stainless Steel(1)	70.3/8" wide x 22" deep Wood Hood Liner with a 1200 CFM INTERNAL BLOWERS - Electronic, 3 speed Touch button control for Blowers and lights, with Remote Control - 3 LED Lights (Bulbs Included) - 4 #304 Grade Stainless Steel Baffle Filters - 10" Round Start Collar (No Transition Required)	72 lbs	\$1,946	\$2,289
VSL472BF	Stainless Steel(1)	70.3/8" wide x 18" deep Wood Hood Liner for EXTERNAL BLOWER (not included) - 5Amp Variable, Infinite control for external blower - No Remote Control available with external blower - 3 LED Lights (Bulbs Included) - 4 #304 Grade Stainless Steel Baffle Filters - 10" Round Start Collar (No Transition Required)	46 lbs	\$832	\$979
VSL472-0-19BF	Stainless Steel(1)	70.3/8" wide x 19.1/4" deep Wood Hood Liner for EXTERNAL BLOWER (not included) - 5Amp Variable, Infinite control for external blower - No Remote Control available with external blower - 3 LED Lights (Bulbs Included) - 4 #304 Grade Stainless Steel Baffle Filters - 10" Round Start Collar (No Transition Required)	52 lbs	\$863	\$1,015
VSL472-0-22BF	Stainless Steel(1)	70.3/8" wide x 22" deep Wood Hood Liner for EXTERNAL BLOWER (not included) - 5Amp Variable, Infinite control for external blower - No Remote Control available with external blower - 3 LED Lights (Bulbs Included) - 4 #304 Grade Stainless Steel Baffle Filters - 10" Round Start Collar (No Transition Required)	55 lbs	\$952	\$1,120

All Stainless Steel used by Trade-Wind is #304, #4 Standard Appliance Finish

(1) All visible components are Stainless Steel. Some non-visible parts are G90 Galvanized

November 01, 2021

BARBECUE HOODS

7200 Series

NEW PYRAMID STYLE OUTDOOR BBQ HOODS

- **NEW PYRAMID BBQ HOODS are 15" Deep at Top, 32" Deep at Bottom**
- Available in 36", 42", 48", 60", and 72" widths
- Telescopic Duct Cover (2 piece) Provided for adjustment up to 10' Ceilings
- Optional Duct Cover Available for up to 12' Ceilings (See Accessories)
- Single or Dual 10" Round Start Collar(s)

Model	Color	Description	Approx. Weight	BDR	SSP
P7236-12	Stainless Steel ⁽ⁱ⁾	36" Stainless Steel Hood - INTERNAL BLOWERS - 1200 CFM INTERNAL BLOWERS, 3 speed control - 2 Dimmable Halogen Lights (Bulbs Included) - 4 #304 Grade Stainless Steel Baffle Filters - Single 10" Round Start Collar	159 lbs	\$2,334	\$2,746
P7236	Stainless Steel ⁽ⁱ⁾	36" Stainless Steel Hood - EXTERNAL BLOWERS (External Blower NOT Included) - 5 Amp Variable, Infinite Control for external blower - 2 Dimmable Halogen Lights (Bulbs Included) - 4 #304 Grade Stainless Steel Baffle Filters - Single 10" Round Start Collar	139 lbs	\$2,074	\$2,441
P7242-12	Stainless Steel ⁽ⁱ⁾	42" Stainless Steel Hood - INTERNAL BLOWERS - 1200 CFM INTERNAL BLOWERS, 3 speed control - 2 Dimmable Halogen Lights (Bulbs Included) - 4 #304 Grade Stainless Steel Baffle Filters - Single 10" Round Start Collar	174 lbs	\$2,601	\$3,060
P7242	Stainless Steel ⁽ⁱ⁾	42" Stainless Steel Hood - EXTERNAL BLOWER (External Blower NOT Included) - 5 Amp Variable, Infinite Control for external blower - 2 Dimmable Halogen Lights (Bulbs Included) - 4 #304 Grade Stainless Steel Baffle Filters - Single 10" Round Start Collar	154 lbs	\$2,337	\$2,749
P7248-12	Stainless Steel ⁽ⁱ⁾	48" Stainless Steel Hood - INTERNAL BLOWERS - 1200 CFM INTERNAL BLOWERS, 3 speed control - 3 Dimmable Halogen Lights (Bulbs Included) - 6 #304 Grade Stainless Steel Baffle Filters - Single 10" Round Start Collar	189 lbs	\$2,861	\$3,365
P7248	Stainless Steel ⁽ⁱ⁾	48" Stainless Steel Hood - EXTERNAL BLOWER (External Blower NOT Included) - 5 Amp Variable, Infinite Control for external blower - 3 Dimmable Halogen Lights (Bulbs Included) - 6 #304 Grade Stainless Steel Baffle Filters - Single 10" Round Start Collar	169 lbs	\$2,601	\$3,060

All Stainless Steel used by Trade-Wind is #304, #4 Standard Appliance Finish

(i) All visible components are Stainless Steel. Some non-visible parts are G90 Galvanized

November 01, 2021

BARBECUE HOODS

PYRAMID STYLE OUTDOOR BBQ HOODS (Continued)

- **PYRAMID BBQ HOODS are 15" Deep at Top, 32" Deep at Bottom**
- Available in 36", 42", 48", 60", and 72" widths
- Telescopic Duct Cover (2 piece) Provided for adjustment up to 10' Ceilings
- Optional Duct Cover Available for up to 12' Ceilings (See Accessories)
- Single or Dual 10" Round Start Collar(s)

Model	Color	Description	Approx. Weight	BDR	SSP
P7260-23	Stainless Steel ⁽ⁱ⁾	60" Stainless Steel Hood - INTERNAL BLOWERS - 2300 CFM INTERNAL BLOWERS, 3 speed control - 3 Dimmable Halogen Lights (Bulbs Included) - 8 #304 Grade Stainless Steel Baffle Filters - Dual 10" Round Start Collars, Requires x2 10" Ducts	204 lbs	\$3,518	\$4,139
P7260	Stainless Steel ⁽ⁱ⁾	60" Stainless Steel Hood - EXTERNAL BLOWER (External Blower NOT Included) - (x2) 5 Amp Variable, Infinite Control for external blower - 3 Dimmable Halogen Lights (Bulbs Included) - 8 #304 Grade Stainless Steel Baffle Filters - Dual 10" Round Start Collars, Requires x2 10" Ducts	184 lbs	\$3,254	\$3,828
P7272-23	Stainless Steel ⁽ⁱ⁾	72" Stainless Steel Hood - INTERNAL BLOWERS - 2300 CFM INTERNAL BLOWERS, 3 speed control - 3 Dimmable Halogen Lights (Bulbs Included) - 8 #304 Grade Stainless Steel Baffle Filters - Dual 10" Round Start Collars, Requires x2 10" Ducts	219 lbs	\$4,278	\$5,033
P7272	Stainless Steel ⁽ⁱ⁾	72" Stainless Steel Hood - EXTERNAL BLOWER (External Blower NOT Included) - (x2) 5 Amp Variable, Infinite Control for external blower - 3 Dimmable Halogen Lights (Bulbs Included) - 8 #304 Grade Stainless Steel Baffle Filters - Dual 10" Round Start Collars, Requires x2 10" Ducts	199 lbs	\$3,939	\$4,635

P7200 Series Duct Cover for up to 12' Ceiling - ACCESSORY

Model	Color	Description	Approx. Weight	DLR PRICE	BDR	SSP
PDC7236	Stainless Steel ⁽ⁱ⁾	2 Piece Duct Cover to Extend up to 12' Ceilings, For P7236 series Hoods Only	18 lbs	\$298	\$426	\$501
PDC7242	Stainless Steel ⁽ⁱ⁾	2 Piece Duct Cover to Extend up to 12' Ceilings, For P7242 series Hoods Only	19 lbs	\$329	\$469	\$552
PDC7248	Stainless Steel ⁽ⁱ⁾	2 Piece Duct Cover to Extend up to 12' Ceilings, For P7248 series Hoods Only	22 lbs	\$365	\$522	\$614
PDC7260	Stainless Steel ⁽ⁱ⁾	2 Piece Duct Cover to Extend up to 12' Ceilings, For P7260 series Hoods Only	25 lbs	\$405	\$579	\$681
PDC7272	Stainless Steel ⁽ⁱ⁾	2 Piece Duct Cover to Extend up to 12' Ceilings, For P7272 series Hoods Only	27 lbs	\$446	\$638	\$750

All Stainless Steel used by Trade-Wind is #304, #4 Standard Appliance Finish

(i) All visible components are Stainless Steel. Some non-visible parts are G90 Galvanized

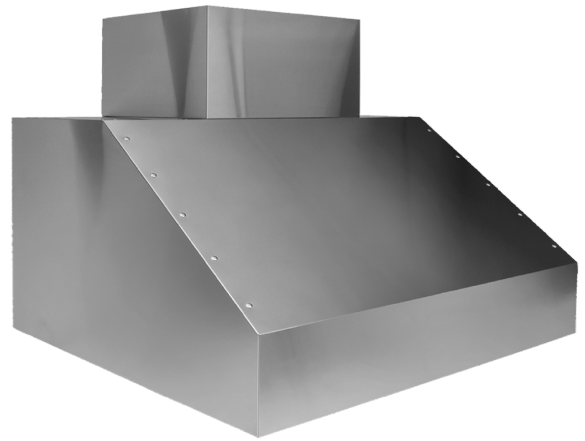
November 01, 2021

BARBECUE HOODS

7200 Series

OUTDOOR BBQ HOODS

- **BBQ HOODS** are 15" Deep at Top, 32" Deep at Bottom
- Available in 36", 42", 48", 54", 60", 66", and 72" widths
- 3 Speed Fan Control(s), Infinite Variable Light Control
- Optional New Telescopic Duct Covers available for Single and Dual Exhaust BBQ Hoods (See Accessories)



Model	Color	Description	Approx. Weight	BDR	SSP
7236-12	Stainless Steel ⁽ⁱ⁾	36" Stainless Steel Hood - INTERNAL BLOWERS - 1200 CFM INTERNAL BLOWERS, 3 speed control - 2 Dimmable Halogen Lights (Bulbs Included) - 4 #304 Grade Stainless Steel Baffle Filters - Single 10" Round Start Collar, Requires x1 10" Duct	133 lbs	\$2,216	\$2,608
7236	Stainless Steel ⁽ⁱ⁾	36" Stainless Steel Hood - EXTERNAL BLOWER (External Blower NOT Included) - 5 Amp Variable, Infinite Control for external blower - 2 Dimmable Halogen Lights (Bulbs Included) - 4 #304 Grade Stainless Steel Baffle Filters - Single 10" Round Start Collar, Requires x1 10" Duct	113 lbs	\$1,954	\$2,299
7242-12	Stainless Steel ⁽ⁱ⁾	42" Stainless Steel Hood - INTERNAL BLOWERS - 1200 CFM INTERNAL BLOWERS, 3 speed control - 2 Dimmable Halogen Lights (Bulbs Included) - 4 #304 Grade Stainless Steel Baffle Filters - Single 10" Round Start Collar, Requires x1 10" Duct	153 lbs	\$2,481	\$2,918
7242	Stainless Steel ⁽ⁱ⁾	42" Stainless Steel Hood - EXTERNAL BLOWER (External Blower NOT Included) - 5 Amp Variable, Infinite Control for external blower - 2 Dimmable Halogen Lights (Bulbs Included) - 4 #304 Grade Stainless Steel Baffle Filters - Single 10" Round Start Collar, Requires x1 10" Duct	134 lbs	\$2,219	\$2,610
7248-12	Stainless Steel ⁽ⁱ⁾	48" Stainless Steel Hood - INTERNAL BLOWERS - 1200 CFM INTERNAL BLOWERS, 3 speed control - 3 Dimmable Halogen Lights (Bulbs Included) - 6 #304 Grade Stainless Steel Baffle Filters - Single 10" Round Start Collar, Requires x1 10" Duct	157 lbs	\$2,743	\$3,227
7248	Stainless Steel ⁽ⁱ⁾	48" Stainless Steel Hood - EXTERNAL BLOWER (External Blower NOT Included) - 5 Amp Variable, Infinite Control for external blower - 3 Dimmable Halogen Lights (Bulbs Included) - 6 #304 Grade Stainless Steel Baffle Filters - Single 10" Round Start Collar, Requires x1 10" Duct	137 lbs	\$2,481	\$2,918
7254	Stainless Steel ⁽ⁱ⁾	54" Stainless Steel Hood - EXTERNAL BLOWERS - 2300 CFM INTERNAL BLOWERS, 3 speed control (x2) - 3 Dimmable Halogen Lights (Bulbs Included) - 8 #304 Grade Stainless Steel Baffle Filters - Dual 10" Round Start Collars, Requires x2 10" Ducts	140 lbs	\$2,775	\$3,265

All Stainless Steel used by Trade-Wind is #304, #4 Standard Appliance Finish

(i) All visible components are Stainless Steel. Some non-visible parts are G90 Galvanized

BARBECUE HOODS

OUTDOOR BBQ HOODS (Continued)

- **BBQ HOODS are 15" Deep at Top, 32" Deep at Bottom**
- Available in 36", 42", 48", 54", 60", 66", and 72" widths
- 3 Speed Fan Control(s), Infinite Variable Light Control
- Optional New Telescopic Duct Covers available for Single and Dual Exhaust BBQ Hoods (See Accessories)

Model	Color	Description	Approx. Weight	BDR	SSP
7254-23	Stainless Steel ⁽¹⁾	54" Stainless Steel Hood - INTERNAL BLOWERS - 2300 CFM INTERNAL BLOWERS, 3 speed control (x2) - 3 Dimmable Halogen Lights (Bulbs Included) - 8 #304 Grade Stainless Steel Baffle Filters - Dual 10" Round Start Collars, Requires x2 10" Ducts	160 lbs	\$3,068	\$3,609
7260-23	Stainless Steel ⁽¹⁾	60" Stainless Steel Hood - INTERNAL BLOWERS - 2300 CFM INTERNAL BLOWER, 3 speed control (x2) - 3 Dimmable Halogen Lights (Bulbs Included) - 8 #304 Grade Stainless Steel Baffle Filters - Dual 10" Round Start Collars, Requires x2 10" Ducts	164 lbs	\$3,393	\$3,992
7260	Stainless Steel ⁽¹⁾	60" Stainless Steel Hood - EXTERNAL BLOWERS (External Blower Not Included) - (x2) 5 Amp Variable, Infinite Control for External Blower - 3 Dimmable Halogen Lights (Bulbs Included) - 8 #304 Grade Stainless Steel Baffle Filters - Dual 10" Round Start Collars, Requires x2 10" Ducts	164 lbs	\$3,134	\$3,687
7266	Stainless Steel ⁽¹⁾	66" Stainless Steel Hood - EXTERNAL BLOWERS - 2300 CFM INTERNAL BLOWER, 3 speed control (x2) - 3 Dimmable Halogen Lights (Bulbs Included) - 8 #304 Grade Stainless Steel Baffle Filters - Dual 10" Round Start Collars, Requires x2 10" Ducts	168 lbs	\$2,590	\$3,047
7266-23	Stainless Steel ⁽¹⁾	66" Stainless Steel Hood - INTERNAL BLOWERS - 2300 CFM INTERNAL BLOWER, 3 speed control (x2) - 3 Dimmable Halogen Lights (Bulbs Included) - 8 #304 Grade Stainless Steel Baffle Filters - Dual 10" Round Start Collars, Requires x2 10" Ducts	168 lbs	\$3,723	\$4,380
7272-23	Stainless Steel ⁽¹⁾	72" Stainless Steel Hood - INTERNAL BLOWERS - 2300 CFM INTERNAL BLOWER, 3 speed control (x2) - 3 Dimmable Halogen Lights (Bulbs Included) - 8 #304 Grade Stainless Steel Baffle Filters - Dual 10" Round Start Collars, Requires x2 10" Ducts	172 lbs	\$4,151	\$4,884
7272	Stainless Steel ⁽¹⁾	72" Stainless Steel Hood - EXTERNAL BLOWER (External Blower NOT Included) - (x2) 5 Amp Variable, Infinite Control for external blower - 3 Dimmable Halogen Lights (Bulbs Included) - 8 #304 Grade Stainless Steel Baffle Filters - Dual 10" Round Start Collars, Requires x2 10" Ducts	152 lbs	\$3,815	\$4,488

All Stainless Steel used by Trade-Wind is #304, #4 Standard Appliance Finish

(1) All visible components are Stainless Steel. Some non-visible parts are G90 Galvanized

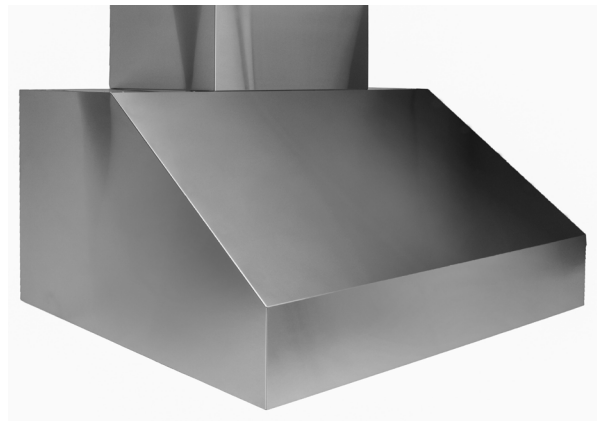
November 01, 2021

BARBECUE HOODS

S7200CD Series

SMOOTH FRONT/CONVERTIBLE DISCHARGE OUTDOOR BBQ HOODS

- **BBQ HOODS** are 15" Deep at Top, 32" Deep at Bottom
- Available in 36", 42", 48", 54", 60", 66", and 72" widths
- 3 Speed Fan Control(s), Infinite Variable Light Control
- **Convertible Discharge - Top & Rear Venting Options**
- Optional New Telescopic Duct Covers available for Single and Dual Exhaust BBQ Hoods (See Accessories)



Model	Color	Description	Approx. Weight	BDR	SSP
S723612CD	Stainless Steel ⁽ⁱ⁾	36" Stainless Steel Hood - INTERNAL BLOWERS - 1200 CFM INTERNAL BLOWERS, 3 speed control - 2 Dimmable Halogen Lights (Bulbs Included) - 4 #304 Grade Stainless Steel Baffle Filters - Single 10" Round Start Collar, Requires x1 10" Duct	133 lbs	\$2,081	\$2,448
S7236CD	Stainless Steel ⁽ⁱ⁾	36" Stainless Steel Hood - EXTERNAL BLOWER (External Blower NOT Included) - 5 Amp Variable, Infinite Control for external blower - 2 Dimmable Halogen Lights (Bulbs Included) - 4 #304 Grade Stainless Steel Baffle Filters - Single 10" Round Start Collar, Requires x1 10" Duct	113 lbs	\$1,845	\$2,171
S724212CD	Stainless Steel ⁽ⁱ⁾	42" Stainless Steel Hood - INTERNAL BLOWERS - 1200 CFM INTERNAL BLOWERS, 3 speed control - 2 Dimmable Halogen Lights (Bulbs Included) - 4 #304 Grade Stainless Steel Baffle Filters - Single 10" Round Start Collar, Requires x1 10" Duct	153 lbs	\$2,295	\$2,700
S7242CD	Stainless Steel ⁽ⁱ⁾	42" Stainless Steel Hood - EXTERNAL BLOWER (External Blower NOT Included) - 5 Amp Variable, Infinite Control for external blower - 2 Dimmable Halogen Lights (Bulbs Included) - 4 #304 Grade Stainless Steel Baffle Filters - Single 10" Round Start Collar, Requires x1 10" Duct	134 lbs	\$2,059	\$2,423
S724812CD	Stainless Steel ⁽ⁱ⁾	48" Stainless Steel Hood - INTERNAL BLOWERS - 1200 CFM INTERNAL BLOWERS, 3 speed control - 3 Dimmable Halogen Lights (Bulbs Included) - 6 #304 Grade Stainless Steel Baffle Filters - Single 10" Round Start Collar, Requires x1 10" Duct	157 lbs	\$2,509	\$2,952
S7248CD	Stainless Steel ⁽ⁱ⁾	48" Stainless Steel Hood - EXTERNAL BLOWER (External Blower NOT Included) - 5 Amp Variable, Infinite Control for external blower - 3 Dimmable Halogen Lights (Bulbs Included) - 6 #304 Grade Stainless Steel Baffle Filters - Single 10" Round Start Collar, Requires x1 10" Duct	137 lbs	\$2,269	\$2,669
S725423CD	Stainless Steel ⁽ⁱ⁾	54" Stainless Steel Hood - INTERNAL BLOWERS - 2300 CFM INTERNAL BLOWERS, 3 speed control (x2) - 3 Dimmable Halogen Lights (Bulbs Included) - 8 #304 Grade Stainless Steel Baffle Filters - Dual 10" Round Start Collars, Requires x2 10" Ducts	160 lbs	\$2,981	\$3,507

All Stainless Steel used by Trade-Wind is #304, #4 Standard Appliance Finish

(i) All visible components are Stainless Steel. Some non-visible parts are G90 Galvanized

BARBECUE HOODS

SMOOTH FRONT/CONVERTIBLE

DISCHARGE OUTDOOR BBQ HOODS (Continued)

- **BBQ HOODS are 15" Deep at Top, 32" Deep at Bottom**
- Available in 36", 42", 48", 54", 60", 66", and 72" widths
- 3 Speed Fan Control(s), Infinite Variable Light Control
- **Convertible Discharge - Top & Rear Venting Options**
- Optional New Telescopic Duct Covers available for Single and Dual Exhaust BBQ Hoods (See Accessories)

Model	Color	Description	Approx. Weight	BDR	SSP
S7254CD	Stainless Steel ⁽¹⁾	54" Stainless Steel Hood - EXTERNAL BLOWER (External Blower NOT Included) - (x2) 5 Amp Variable, Infinite Control for external blower - 3 Dimmable Halogen Lights (Bulbs Included) - 8 #304 Grade Stainless Steel Baffle Filters - Dual 10" Round Start Collars, Requires x2 10" Ducts	140 lbs	\$2,745	\$3,229
S726023CD	Stainless Steel ⁽¹⁾	60" Stainless Steel Hood - INTERNAL BLOWERS - 2300 CFM INTERNAL BLOWER, 3 speed control (x2) - 3 Dimmable Halogen Lights (Bulbs Included) - 8 #304 Grade Stainless Steel Baffle Filters - Dual 10" Round Start Collars, Requires x2 10" Ducts	164 lbs	\$3,251	\$3,825
S7260CD	Stainless Steel ⁽¹⁾	60" Stainless Steel Hood - EXTERNAL BLOWER (External Blower NOT Included) - (x2) 5 Amp Variable, Infinite Control for external blower - 3 Dimmable Halogen Lights (Bulbs Included) - 8 #304 Grade Stainless Steel Baffle Filters - Dual 10" Round Start Collars, Requires x2 10" Ducts	144 lbs	\$3,016	\$3,548
S726623CD	Stainless Steel ⁽¹⁾	66" Stainless Steel Hood - INTERNAL BLOWERS - 2300 CFM INTERNAL BLOWER, 3 speed control (x2) - 3 Dimmable Halogen Lights (Bulbs Included) - 8 #304 Grade Stainless Steel Baffle Filters - Dual 10" Round Start Collars, Requires x2 10" Ducts	168 lbs	\$3,653	\$4,298
S7266CD	Stainless Steel ⁽¹⁾	66" Stainless Steel Hood - EXTERNAL BLOWER (External Blower NOT Included) - (x2) 5 Amp Variable, Infinite Control for external blower - 3 Dimmable Halogen Lights (Bulbs Included) - 8 #304 Grade Stainless Steel Baffle Filters - Dual 10" Round Start Collars, Requires x2 10" Ducts	148 lbs	\$3,417	\$4,021
S727223CD	Stainless Steel ⁽¹⁾	72" Stainless Steel Hood - INTERNAL BLOWERS - 2300 CFM INTERNAL BLOWER, 3 speed control (x2) - 3 Dimmable Halogen Lights (Bulbs Included) - 8 #304 Grade Stainless Steel Baffle Filters - Dual 10" Round Start Collars, Requires x2 10" Ducts	172 lbs	\$4,051	\$4,766
S7272CD	Stainless Steel ⁽¹⁾	72" Stainless Steel Hood - EXTERNAL BLOWER (External Blower NOT Included) - (x2) 5 Amp Variable, Infinite Control for external blower - 3 Dimmable Halogen Lights (Bulbs Included) - 8 #304 Grade Stainless Steel Baffle Filters - Dual 10" Round Start Collars, Requires x2 10" Ducts	152 lbs	\$3,815	\$4,488

All Stainless Steel used by Trade-Wind is #304, #4 Standard Appliance Finish

(1) All visible components are Stainless Steel. Some non-visible parts are G90 Galvanized

November 01, 2021

BARBECUE HOODS

7200 & S7200CD Series BBQ Hood Duct Covers

2 Piece Telescopic Duct Cover for 9' to 10' Ceiling (15" Deep) - ACCESSORY

Model	Color	Description	Approx. Weight	BDR	SSP
DC7201S	Stainless Steel ⁽¹⁾	BBQ Duct Cover for 7200/S7200CD SINGLE EXHAUST HOODS from 9' to 10' ceilings (no cover required for 8'),	18 lbs	\$328	\$385
DC7201D	Stainless Steel ⁽¹⁾	BBQ Duct Cover for 7200/S7200CD DUAL EXHAUST HOODS from 9' to 10' ceilings (no cover required for 8')	19 lbs	\$354	\$416

2 Piece Telescopic Duct Cover for 10' to 12' Ceiling (15" Deep) - ACCESSORY

Model	Color	Description	Approx. Weight	BDR	SSP
DC7200S	Stainless Steel ⁽¹⁾	BBQ Duct Cover for 7200/S7200CD SINGLE EXHAUST HOODS from 10' to 12' ceilings (no cover required for 8')	18 lbs	\$367	\$432
DC7200D	Stainless Steel ⁽¹⁾	BBQ Duct Cover for 7200/S7200CD DUAL EXHAUST HOODS from 10' to 12' ceilings (no cover required for 8')	22 lbs	\$426	\$501

48" Island Style Outdoor BBQ Hoods

Model	Color	Description	Approx. Weight	BDR	SSP
P7248-12-ISL	Stainless Steel ⁽¹⁾	48", Island - Internal 1200 CFM, 10" Start Collar, Duct Cover to 10' Ceilings	189 lbs	\$5,544	\$6,523
P7248-ISL	Stainless Steel ⁽¹⁾	48", Island - Variable Switch for External Blower, 10" Start Collar , Duct Cover to 10' Ceilings	169 lbs	\$5,282	\$6,214

T-Shaped Outdoor BBQ Hoods

Model	Color	Description	Approx. Weight	BDR	SSP
T7236-12	Stainless Steel ⁽¹⁾	36" , Internal 1200 CFM, 10" Start Collar, Duct Cover to 10' Ceilings	159 lbs	\$2,264	\$2,664
T7236	Stainless Steel ⁽¹⁾	36", Variable Switch for External Blower, 10" Start Collar, Duct Cover to 10'	139 lbs	\$2,005	\$2,358
T7242-12	Stainless Steel ⁽¹⁾	42", Internal 1200 CFM, 10" Start Collar, Duct Cover to 10' Ceilings	174 lbs	\$2,535	\$2,983
T7242	Stainless Steel ⁽¹⁾	42" , Variable Switch for External Blower, 10" Start Collar , Duct Cover to 10'	154 lbs	\$2,275	\$2,677
T7248-12	Stainless Steel ⁽¹⁾	48", Internal 1200 CFM, 10" Start Collar, Duct Cover to 10' Ceilings	189 lbs	\$2,799	\$3,293
T7248	Stainless Steel ⁽¹⁾	48" , Variable Switch for External Blower, 10" Start Collar , Duct Cover to 10'	169 lbs	\$2,540	\$2,988

Model	Color	Description	Approx. Weight	BDR	SSP
TDC7200	Stainless Steel ⁽¹⁾	1 Outside Piece Duct Cover to EXTEND From 10' - 12' Ceiling for TC7200 Hoods	18 lbs	\$343	\$403

All Stainless Steel used by Trade-Wind is #304, #4 Standard Appliance Finish

(1) All visible components are Stainless Steel. Some non-visible parts are G90 Galvanized

November 01, 2021

BARBECUE LINERS

L7200 Series

OUTDOOR BBQ LINERS

- **BBQ LINERS** are 32" in Depth
- 3 Speed Fan Control(s), Infinite Variable Light Control
- Dimmable 50 Watt Halogen Lights (Bulbs Included)
- Full-Filter Bottom using #304 Grade Stainless Steel Baffle Filter
- Single or Dual 10" Round Start Collar(s)



Model	Color	Description	Approx. Weight	BDR	SSP
L7236-12	Stainless Steel ⁽¹⁾	34.1/2" Stainless Steel Liner - INTERNAL BLOWERS - 1200 CFM INTERNAL BLOWERS, 3 speed control - 2 Dimmable Halogen Lights (Bulbs Included) - 4 #304 Grade Stainless Steel Baffle Filters - Single 10" Round Start Collar, Requires x1 10" Duct	152 lbs	\$2,088	\$2,456
L7236	Stainless Steel ⁽¹⁾	34.1/2" Stainless Steel Liner - EXTERNAL BLOWER (External Blower NOT Included) - 5 Amp Variable, Infinite Control for external blower - 2 Dimmable Halogen Lights (Bulbs Included) - 4 #304 Grade Stainless Steel Baffle Filters - Single 10" Round Start Collar, Requires x1 10" Duct	137 lbs	\$1,826	\$2,148
L7242-12	Stainless Steel ⁽¹⁾	40.1/2" Stainless Steel Liner - INTERNAL BLOWERS - 1200 CFM INTERNAL BLOWERS, 3 speed control - 2 Dimmable Halogen Lights (Bulbs Included) - 4 #304 Grade Stainless Steel Baffle Filters - Single 10" Round Start Collar, Requires x1 10" Duct	156 lbs	\$2,347	\$2,762
L7242	Stainless Steel ⁽¹⁾	40.1/2" Stainless Steel Liner - EXTERNAL BLOWER (External Blower NOT Included) - 5 Amp Variable, Infinite Control for external blower - 2 Dimmable Halogen Lights (Bulbs Included) - 4 #304 Grade Stainless Steel Baffle Filters - Single 10" Round Start Collar, Requires x1 10" Duct	141 lbs	\$2,088	\$2,456
L7248-12	Stainless Steel ⁽¹⁾	46.1/2" Stainless Steel Liner - INTERNAL BLOWERS - 1200 CFM INTERNAL BLOWERS, 3 speed control - 3 Dimmable Halogen Lights (Bulbs Included) - 6 #304 Grade Stainless Steel Baffle Filters - Single 10" Round Start Collar, Requires x1 10" Duct	160 lbs	\$2,609	\$3,070
L7248	Stainless Steel ⁽¹⁾	46.1/2" Stainless Steel Liner - EXTERNAL BLOWER (External Blower NOT Included) - 5 Amp Variable, Infinite Control for external blower - 3 Dimmable Halogen Lights (Bulbs Included) - 6 #304 Grade Stainless Steel Baffle Filters - Single 10" Round Start Collar, Requires x1 10" Duct	145 lbs	\$2,347	\$2,762
L7254-23	Stainless Steel ⁽¹⁾	52.1/2" Stainless Steel Liner - INTERNAL BLOWERS - 2300 CFM INTERNAL BLOWERS, 3 speed control (x2) - 3 Dimmable Halogen Lights (Bulbs Included) - 8 #304 Grade Stainless Steel Baffle Filters - Dual 10" Round Start Collars, Requires x2 10" Ducts	164 lbs	\$2,935	\$3,453

All Stainless Steel used by Trade-Wind is #304, #4 Standard Appliance Finish

(1) All visible components are Stainless Steel. Some non-visible parts are G90 Galvanized

November 01, 2021

BARBECUE LINERS

OUTDOOR BBQ LINERS (Continued)

- **BBQ LINERS are 32" in Depth**
- 3 Speed Fan Control(s), Infinite Variable Light Control
- Dimmable 50 Watt Halogen Lights (Bulbs Included)
- Full-Filter Bottom using #304 Grade Stainless Steel Baffle Filter
- Single or Dual 10" Round Start Collar(s)

Model	Color	Description	Approx. Weight	BDR	SSP
L7254	Stainless Steel ⁽ⁱ⁾	52.1/2" Stainless Steel Liner - EXTERNAL BLOWER (External Blower NOT Included) - (x2) 5 Amp Variable, Infinite Control for external blower - 3 Dimmable Halogen Lights (Bulbs Included) - 8 #304 Grade Stainless Steel Baffle Filters - Dual 10" Round Start Collars, Requires x2 10" Ducts	149 lbs	\$2,675	\$3,147
L7260-23	Stainless Steel ⁽ⁱ⁾	58.1/2" Stainless Steel Liner - INTERNAL BLOWERS - 2300 CFM INTERNAL BLOWERS, 3 speed control (x2) - 3 Dimmable Halogen Lights (Bulbs Included) - 8 #304 Grade Stainless Steel Baffle Filters - Dual 10" Round Start Collars, Requires x2 10" Ducts	167 lbs	\$3,265	\$3,841
L7260	Stainless Steel ⁽ⁱ⁾	58.1/2" Stainless Steel Liner - EXTERNAL BLOWER (External Blower NOT Included) - (x2) 5 Amp Variable, Infinite Control for external blower - 3 Dimmable Halogen Lights (Bulbs Included) - 8 #304 Grade Stainless Steel Baffle Filters - Dual 10" Round Start Collars, Requires x2 10" Ducts	152 lbs	\$3,003	\$3,532
L7266-23	Stainless Steel ⁽ⁱ⁾	64.1/2" Stainless Steel Liner - INTERNAL BLOWERS - 2300 CFM INTERNAL BLOWERS, 3 speed control (x2) - 3 Dimmable Halogen Lights (Bulbs Included) - 8 #304 Grade Stainless Steel Baffle Filters - Dual 10" Round Start Collars, Requires x2 10" Ducts	171 lbs	\$3,590	\$4,223
L7266	Stainless Steel ⁽ⁱ⁾	64.1/2" Stainless Steel Liner - EXTERNAL BLOWER (External Blower NOT Included) - (x2) 5 Amp Variable, Infinite Control for external blower - 3 Dimmable Halogen Lights (Bulbs Included) - 8 #304 Grade Stainless Steel Baffle Filters - Dual 10" Round Start Collars, Requires x2 10" Ducts	156 lbs	\$3,337	\$3,925
L7272-23	Stainless Steel ⁽ⁱ⁾	70.1/2" Stainless Steel Liner - INTERNAL BLOWERS - 2300 CFM INTERNAL BLOWERS, 3 speed control (x2) - 3 Dimmable Halogen Lights (Bulbs Included) - 8 #304 Grade Stainless Steel Baffle Filters - Dual 10" Round Start Collars, Requires x2 10" Ducts	175 lbs	\$4,020	\$4,730
L7272	Stainless Steel ⁽ⁱ⁾	70.1/2" Stainless Steel Liner - EXTERNAL BLOWER (External Blower NOT Included) - (x2) 5 Amp Variable, Infinite Control for external blower - 3 Dimmable Halogen Lights (Bulbs Included) - 8 #304 Grade Stainless Steel Baffle Filters - Dual 10" Round Start Collars, Requires x2 10" Ducts	161 lbs	\$3,640	\$4,283

All Stainless Steel used by Trade-Wind is #304, #4 Standard Appliance Finish

(i) All visible components are Stainless Steel. Some non-visible parts are G90 Galvanized

November 01, 2021

INDOOR RANGE HOODS

3000 Range Hoods 3000 Slim Line Series

- Slim Line (3" Tall) Range Hood with 390 CFM Internal Blower
- **NEW Remote Control with optional automatic 5 minute shut off timer**
- Top Vent Only - For rear discharge, use 7" 90° Elbow (not provided)
- Telescopic Duct Cover for up to 10' Ceiling
- Optional Duct Cover for up to 12' Ceiling (See Accessories)



Model	Color	Description	Approx. Weight	BDR	SSP
30303RC	Stainless Steel ⁽¹⁾	30" Wide x 20" Deep x 3" Tall, Wall Mount Range Hood - 390 CFM Internal Blower - Does Not Require Make Up Air - Electronic, 3 speed touch button control for blower and lights, with Remote Control - 2 LED Lights (Bulbs Included) - 2 #304 Grade Stainless Steel Baffle Filters - 7" Round Start Collar	34 lbs	\$751	\$884
30363RC	Stainless Steel ⁽¹⁾	36" Wide x 20" Deep x 3" Tall, Wall Mount Range Hood - 390 CFM Internal Blower - Does Not Require Make Up Air - Electronic, 3 speed touch button control for blower and lights, with Remote Control - 2 LED Lights (Bulbs Included) - 2 #304 Grade Stainless Steel Baffle Filters - 7" Round Start Collar	36 lbs	\$795	\$935
30423RC	Stainless Steel ⁽¹⁾	42" Wide x 20" Deep x 3" Tall, Wall Mount Range Hood - 390 CFM Internal Blower - Does Not Require Make Up Air - Electronic, 3 speed touch button control for blower and lights, with Remote Control - 2 LED Lights (Bulbs Included) - 2 #304 Grade Stainless Steel Baffle Filters - 7" Round Start Collar	38 lbs	\$849	\$999

3000 Series Duct Cover for up to 12' Ceiling - ACCESSORY

Model	Color	Description	Approx. Weight	BDR	SSP
DC3000-12	Stainless Steel ⁽¹⁾	2 Piece Duct Cover to Extend up to 12' Ceilings for 3000 Series Hoods Only	26 lbs	\$367	\$432

All Stainless Steel used by Trade-Wind is #304, #4 Standard Appliance Finish

(1) All visible components are Stainless Steel. Some non-visible parts are G90 Galvanized

INDOOR RANGE HOODS

H3200 Series Range Hoods

H3200 Series

- **NEW Remote Control with optional automatic 5 minute shut off timer**
- 12" Tall Range Hoods
- 390 CFM, 600 CFM or 780 CFM Internal Blower
- Top Vent Only - For rear discharge, use 90° Elbow (not provided)



Model	Color	Description	Approx. Weight	BDR	SSP
H32303RC	Stainless Steel ⁽¹⁾	30" Wide x 20" Deep x 12" Tall, Range Hood - 390 CFM Internal Blower - Does Not Require Make Up Air - Electronic, 3 speed touch button control for blower and lights, with Remote Control - 2 LED Lights (Bulbs Included) - 2 #304 Grade Stainless Steel Baffle Filters - 7" Round Start Collar	30 lbs	\$620	\$730
H32306RC	Stainless Steel ⁽¹⁾	30" Wide x 20" Deep x 12" Tall, Range Hood - 600 CFM Internal Blower - Electronic, 3 speed touch button control for blower and lights, with Remote Control - 2 LED Lights (Bulbs Included) - 2 #304 Grade Stainless Steel Baffle Filters - 8" Round Start Collar	32 lbs	\$801	\$943
H32363RC	Stainless Steel ⁽¹⁾	36" Wide x 20" Deep x 12" Tall, Range Hood - 390 CFM Internal Blower - Does Not Require Make Up Air - Electronic, 3 speed touch button control for blower and lights, with Remote Control - 2 LED Lights (Bulbs Included) - 2 #304 Grade Stainless Steel Baffle Filters - 7" Round Start Collar	32 lbs	\$677	\$796
H32366RC	Stainless Steel ⁽¹⁾	36" Wide x 20" Deep x 12" Tall, Range Hood - 600 CFM Internal Blower - Electronic, 3 speed touch button control for blower and lights, with Remote Control - 2 LED Lights (Bulbs Included) - 2 #304 Grade Stainless Steel Baffle Filters - 8" Round Start Collar	34 lbs	\$856	\$1,007
H32423RC	Stainless Steel ⁽¹⁾	42" Wide x 20" Deep x 12" Tall, Range Hood - 390 CFM Internal Blower - Does Not Require Make Up Air - Electronic, 3 speed touch button control for blower and lights, with Remote Control - 2 LED Lights (Bulbs Included) - 2 #304 Grade Stainless Steel Baffle Filters - 7" Round Start Collar	33 lbs	\$747	\$879
H32426RC	Stainless Steel ⁽¹⁾	42" Wide x 20" Deep x 12" Tall, Range Hood - 600 CFM Internal Blower - Electronic, 3 speed touch button control for blower and lights, with Remote Control - 2 LED Lights (Bulbs Included) - 2 #304 Grade Stainless Steel Baffle Filters - 8" Round Start Collar	35 lbs	\$913	\$1,074

All Stainless Steel used by Trade-Wind is #304, #4 Standard Appliance Finish

(1) All visible components are Stainless Steel. Some non-visible parts are G90 Galvanized

November 01, 2021

INDOOR RANGE HOODS

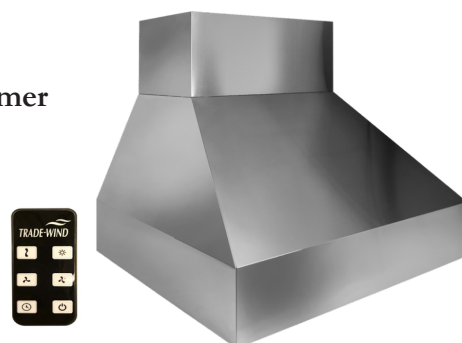
H3200 Series (Continued)

- **NEW Remote Control with optional automatic 5 minute shut off timer**
- 12" Tall Range Hoods
- 390 CFM, 600 CFM or 780 CFM Internal Blower
- Top Vent Only - For rear discharge, use 90° Elbow (not provided)

Model	Color	Description	Approx. Weight	BDR	SSP
H32487RC	Stainless Steel ⁽¹⁾	48" Wide x 20" Deep x 12" Tall, Range Hood <ul style="list-style-type: none"> - 780 CFM Internal Blower - Electronic, 3 speed touch button control for blower and lights, with Remote Control - 3 LED Lights (Bulbs Included) - 3 #304 Grade Stainless Steel Baffle Filters - 10" Round Start Collar 	38 lbs	\$1,094	\$1,287

P3200 Pyramid Series

- **NEW Remote Control with optional automatic 5 minute shut off timer**
- 12" Tall Range Hoods
- 390 CFM, 600 CFM, or 780 CFM Blower
- Telescopic Duct Cover for up to 10' Ceiling
- Optional Duct Cover for up to 12' Ceiling (See Accessories)



Model	Color	Description	Approx. Weight	BDR	SSP
P32303RC	Stainless Steel ⁽¹⁾	30" Wide x 20" Deep x 12" Tall, Pyramid Range Hood <ul style="list-style-type: none"> - 390 CFM Internal Blower - Does Not Require Make Up Air - Electronic, 3 speed touch button control for blower and lights, with Remote Control - 2 LED Lights (Bulbs Included) - 2 #304 Grade Stainless Steel Baffle Filters - 7" Round Start Collar 	40 lbs	\$801	\$943
P32306RC	Stainless Steel ⁽¹⁾	30" Wide x 20" Deep x 12" Tall, Pyramid Range Hood <ul style="list-style-type: none"> - 600 CFM Internal Blower - Electronic, 3 speed touch button control for blower and lights, with Remote Control - 2 LED Lights (Bulbs Included) - 2 #304 Grade Stainless Steel Baffle Filters - 8" Round Start Collar 	42 lbs	\$858	\$1,010
P32363RC	Stainless Steel ⁽¹⁾	36" Wide x 20" Deep x 12" Tall, Pyramid Range Hood <ul style="list-style-type: none"> - 390 CFM Internal Blower - Does Not Require Make Up Air - Electronic, 3 speed touch button control for blower and lights, with Remote Control - 2 LED Lights (Bulbs Included) - 2 #304 Grade Stainless Steel Baffle Filters - 7" Round Start Collar 	42 lbs	\$913	\$1,074

All Stainless Steel used by Trade-Wind is #304, #4 Standard Appliance Finish

(1) All visible components are Stainless Steel. Some non-visible parts are G90 Galvanized

November 01, 2021

INDOOR RANGE HOODS

P3200 Pyramid Series (Continued)

- **NEW Remote Control with optional automatic 5 minute shut off timer**
- 12" Tall Range Hoods
- 390 CFM, 600 CFM, or 780 CFM Blower
Telescopic Duct Cover for up to 10' Ceiling
- Optional Duct Cover for up to 12' Ceiling (See Accessories)

Model	Color	Description	Approx. Weight	BDR	SSP
P32366RC	Stainless Steel ⁽¹⁾	36" Wide x 20" Deep x 12" Tall, Pyramid Range Hood - 600 CFM Internal Blower - Electronic, 3 speed touch button control for blower and lights, with Remote Control - 2 LED Lights (Bulbs Included) - 2 #304 Grade Stainless Steel Baffle Filters - 8" Round Start Collar	45 lbs	\$980	\$1,153
P32423RC	Stainless Steel ⁽¹⁾	42" Wide x 20" Deep x 12" Tall, Pyramid Range Hood - 390 CFM Internal Blower - Does Not Require Make Up Air - Electronic, 3 speed touch button control for blower and lights, with Remote Control - 2 LED Lights (Bulbs Included) - 2 #304 Grade Stainless Steel Baffle Filters - 7" Round Start Collar	45 lbs	\$980	\$1,153
P32426RC	Stainless Steel ⁽¹⁾	42" Wide x 20" Deep x 12" Tall, Pyramid Range Hood - 600 CFM Internal Blower - Electronic, 3 speed touch button control for blower and lights, with Remote Control - 2 LED Lights (Bulbs Included) - 2 #304 Grade Stainless Steel Baffle Filters - 8" Round Start Collar	47 lbs	\$1,046	\$1,231
P32487RC	Stainless Steel ⁽¹⁾	48" Wide x 20" Deep x 12" Tall, Pyramid Range Hood - 780 CFM Internal Blower - Electronic, 3 speed touch button control for blower and lights, with Remote Control - 3 LED Lights (Bulbs Included) - 3 #304 Grade Stainless Steel Baffle Filters - 10" Round Start Collar	51 lbs	\$1,173	\$1,380

P3200 Series Duct Cover for up to 12' Ceiling - ACCESSORY

Model	Color	Description	Approx. Weight	BDR	SSP
PDC3230	Stainless Steel ⁽¹⁾	2 Piece Duct Cover to Extend up to 12' Ceilings, For P3230 series Hoods Only	18 lbs	\$367	\$432
PDC3236	Stainless Steel ⁽¹⁾	2 Piece Duct Cover to Extend up to 12' Ceilings, For P3236 series Hoods Only	19 lbs	\$426	\$501
PDC3242	Stainless Steel ⁽¹⁾	2 Piece Duct Cover to Extend up to 12' Ceilings, For P3242 series Hoods Only	20 lbs	\$469	\$552
PDC3248	Stainless Steel ⁽¹⁾	2 Piece Duct Cover to Extend up to 12' Ceilings, For P3248 series Hoods Only	22 lbs	\$522	\$614

All Stainless Steel used by Trade-Wind is #304, #4 Standard Appliance Finish

(1) All visible components are Stainless Steel. Some non-visible parts are G90 Galvanized

November 01, 2021

ACCESSORIES



In-Line Blowers, Trade-Wind® Pro Series

Model	Color	Description	Approx. Weight	BDR	SSP
PSX006XL		In-Line Ventilator, 392 CFM, 6" Round Duct	11 lbs	\$419	\$493
PSD008XL		In-Line Ventilator, 836 CFM, 8" Round Duct	16 lbs	\$900	\$1,058
PSD010XL		In-Line Ventilator, 1266 CFM, 10" Round Duct	22 lbs	\$1,024	\$1,205

***NOTE: Trade-Wind® HIGHLY recommends using a duct silencer due to the high RPMs of these ventilators.

In-Line Duct Silencers, Trade-Wind® Pro Series

Duct Silencers reduce blower sounds transmitted "inside the duct" by more than 80%.



Model	Color	Description	Approx. Weight	BDR	SSP
PSS006XL		Duct Silencer for 6" Round Duct	15 lbs	\$199	\$234
PSS008XL		Duct Silencer for 8" Round Duct	23 lbs	\$231	\$272
PSS010XL		Duct Silencer for 10" Round Duct	35 lbs	\$371	\$437

Fast Clamps, Trade-Wind® Pro Series

Neoprene Lined Fast Clamps reduce Blower sounds transmitted "in the metal walls" of the duct.



Model	Color	Description	Approx. Weight	BDR	SSP
FC6		Noise Reduction Mounting Clamp, 6" Diameter, Two-Inch Galvanized Steel Band Lined with 3/8" Neoprene, 2 Per Box.	2 lbs	\$52	\$62
FC8		Noise Reduction Mounting Clamp, 8" Diameter, Two-Inch Galvanized Steel Band Lined with 3/8" Neoprene, 2 Per Box.	2 lbs	\$55	\$64
FC10		Noise Reduction Mounting Clamp, 10" Diameter, Two-Inch Galvanized Steel Band Lined with 3/8" Neoprene, 2 Per Box.	3 lbs	\$59	\$69

Dampers, Trade-Wind® Pro Series

Neoprene Seal Dampers eliminate metal "clatter" sounds.



Model	Color	Description	Approx. Weight	BDR	SSP
DPR006		Damper for 6" Round Duct, Spring Loaded Butterfly-Type with Neoprene Seal	1 lb	\$55	\$64
DPR008		Damper for 8" Round Duct, Spring Loaded Butterfly-Type with Neoprene Seal	2 lbs	\$70	\$82
DPR010		Damper for 10" Round Duct, Spring Loaded Butterfly-Type with Neoprene Seal	2 lbs	\$85	\$100

ACCESSORIES

Commercial Style Baffle Filters, Trade-Wind® Pro Series

Model	Color	Description	Approx. Weight	BDR	SSP
3BL-33-605	Stainless Steel	12" x 14" Stainless Steel Commercial Style Baffle Filter for VSL 400 Series Liners, 18" Deep only.	3.5 lbs	\$118	\$139
3BL-33-606	Stainless Steel	12" x 14" Stainless Steel Commercial Style Baffle Filter for Outdoor BBQ Hoods: P7200, 7200(RD), and L7200 Series.	3.5 lbs	\$118	\$139
3BL-33-705	Stainless Steel	15" x 15" Stainless Steel Commercial Style Baffle Filter for VSL 400 Series, 22" Deep only.	3.5 lbs	\$118	\$139
3BL-33-706	Stainless Steel	14" x 15" Stainless Steel Commercial Style Baffle Filter for Indoor Range Hoods: 3000, H3200, and P3200 Series.	3.5 lbs	\$118	\$139

Replacement Remote Control

Model	Color	Description	Approx. Weight	BDR	SSP
2BA-22-012	Black	Replacement Remote Control for all -RC units, Indoor Liners/ Hoods	2 lbs	\$96	\$113

Ductless Conversion Kit

Model	Color	Description	Approx. Weight	BDR	SSP
5BL-39-400-DCK		Ductless Conversion Kit for Recirculating Air for Models VSL - 3 and 4 models only Kit includes (2) Charcoal Filters w/(4) Brackets	2 lbs	\$85	\$100
5BL-39-400-DCK1		Ductless Conversion Kit for Recirculating Air for Models VSL4482RC only Kit includes (3) Charcoal Filters w/(6) Brackets	2 lbs	\$100	\$118
5BL-39-I30-DCK		Ductless Conversion Kit for Recirculating Air for Model I3230 only Kit includes (2) Charcoal Filters w/(8) Filter Clips	2 lbs	\$59	\$69
5BL-39-I36-DCK		Ductless Conversion Kit for Recirculating Air for Models I3236 - 2 and 3 models only Kit includes (2) Charcoal Filters w/(4) Brackets	2 lbs	\$83	\$98
5BL-33-300-DCK1		Ductless Conversion Kit for Recirculating Air for Models H3200, P3200 & 3000 Kit includes (2) Charcoal Filters w/(4) Brackets	2 lbs	\$92	\$108

New High Velocity Roof Cap and Wall Cap

Model	Color	Description	Approx. Weight	BDR	SSP
3BL-35-485RC		HVRC10 - High Velocity Roof Cap 10"	10 lbs	\$349	\$411
3BL-35-485WC		HVWC10 - High Velocity Wall Cap 10"	10 lbs	\$266	\$293



WARRANTY

TRADE-WIND Kitchen Ventilation Products

What IS Covered:

Trade-Wind Manufacturing, LLC® warrants its Trade-Wind® Kitchen Ventilation Products to the original user, to be free of defects in materials and workmanship for three (3) years from the date of purchase.

Trade-Wind Manufacturing, LLC® at its option, will repair or replace the complete unit or any defective component without charge. This warranty may be voided if any unauthorized service, alterations, or repairs are made to the product.

What is NOT Covered:

- Normal maintenance and service of any product that has been subject to misuse, negligence, accident, or installation inconsistent with the recommended Trade-Wind® Installation Instructions and Trade-Wind® Best Practices Guidelines.
- Product used other than for normal in-home use or products used outside of the United States and Canada.
- Damage to the product caused by accident, fire, flood, or other acts of God.
- Service calls to educate the customer in the proper use and care of the product, change fuses, or to reset the circuit breakers.
- Service calls to correct faulty installation, such as, performance issues relating to improperly sized ducting or restrictive roof caps is not covered and will by default be charged back to the Homeowner.
- Light bulbs are not covered under warranty.

Trade-Wind Manufacturing, LLC® disclaims and excludes any liability for implied warranties or for incidental or consequential damages wherever permitted by law. There are no implied warranties of merchantability or fitness for a particular use or purpose. This warranty gives you specific legal rights and you may also have other rights, which vary from state to state.

For Service: If you need service on your Trade-Wind® Kitchen Ventilation Product, visit our website at: www.t-wusa.com and click on the warranty tab. Fill out the simple form providing the model number, serial number, date of purchase, and brief description of the problem. Proof of purchase will also be required.

Warranty Revised 6/11/18

Trade-Wind Manufacturing, LLC® has a policy of continuous improvements and reserves the right to modify (at any time and without notice) any or all of its products, features, designs, components and specifications. *For exact dimensions, see the Installation Instructions included with each product.* Some features may be slightly different than shown on product literature.



For more information, please contact your Trade-Wind® Representative

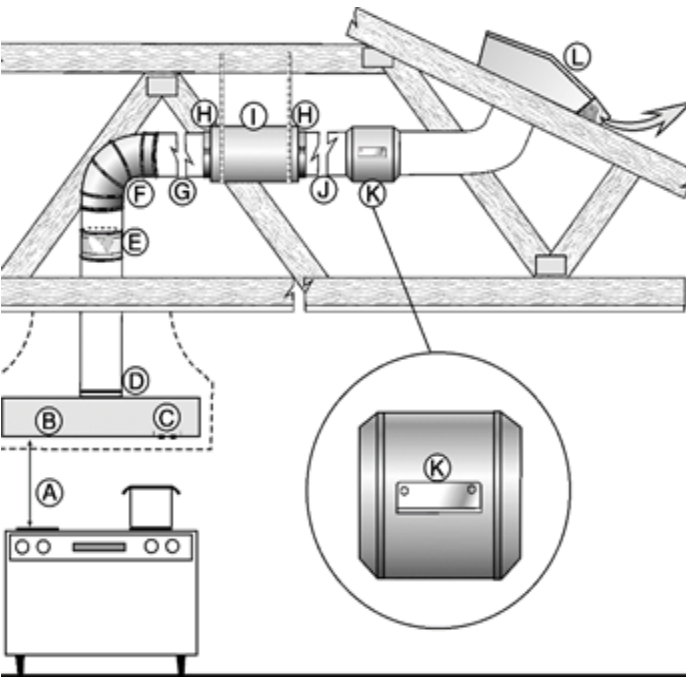


800 West Grant Street, Phoenix, AZ 85007
1-800-955-5737
602-900-8500
t-wusa.com



Typical Installation & Parts Selection List

For Trade-Wind® VSL Series Liners *Connected to In-Line or Remote Blowers**

Typical Installation	<i>Installation Considerations</i>
	<p>The following installation considerations pertain only to Trade-Wind liners connected to in-line or remote (roof top or wall mounted) blowers. For exact details, see the Installation Instructions included with each product. Trade-Wind also has a complete line of models with internal blowers delivering from 410 to 1360 CFM (see your dealer for details).</p> <p>Trade-Wind® ventilation systems for in-line and remote blowers can be installed in a variety of configurations. Although the in-line blower (see Item K) and duct silencer (I) shown in this example are drawn horizontally, they can be installed at any angle.</p> <p>Seven Recommendations for Quietest Possible Installation</p> <ol style="list-style-type: none"> 1. Include a <u>Duct Silencer</u> to absorb up to 70% of the motor noise transmitted inside the duct (Item I). 2. Include <u>Fast Clamps</u> to absorb most motor vibration noise transmitted by the metal walls of the duct (Item H). 3. Include a <u>Damper</u> with Neoprene® seal to avoid metal “clatter” when damper closes. 4. Trade-Wind’s <u>Full-size Filters</u> reduce air movement sound (Item B) 5. Consider the <u>distance Blower is from Liner</u> (see Item K or L) 6. <u>Variable Speed Control</u> reduces motor sound (see Item C) 7. Consider the <u>Duct Configuration</u> (see Items F, G & J)

Item	Installation Guide & Parts Selection List
A	Distance from VSL Liner to Cooking Surface Bottom of Liner should be 30” – 36” from cooking surface. Island installations should be no more than 30” if possible.
B	VSL400 Series Liners <ul style="list-style-type: none"> <input type="checkbox"/> VSL430-0-BF & VSL 430-0-22-BF, designed for 8” Duct & Accessories <input type="checkbox"/> VSL436-0-BF & VSL 436-0-22-BF, designed for 8” Duct & Accessories <input type="checkbox"/> VSL442-0-BF & VSL 442-0-22-BF, designed for 10” Duct & Accessories (\$ _____) <input type="checkbox"/> VSL448-0-BF & VSL 448-0-22-BF, designed for 10” Duct & Accessories <input type="checkbox"/> VSL454-0-BF & VSL 454-0-22-BF, designed for 10” Duct & Accessories <input type="checkbox"/> VSL460-0-BF & VSL 460-0-22-BF, designed for 10” Duct & Accessories
C	Fan Control Selection Variable-Speed Fan Control (\$ No Charge) ALL Trade-Wind® liners include a factory installed variable-speed fan control on new BF models that are designed for use with ALL Trade-Wind® PSD in-line Blowers.
D	Start Collar (Included) All Trade-Wind® liners include a factory installed start collar pre-welded to the liner. (\$ No Charge)
E	Damper Selection <ul style="list-style-type: none"> <input type="checkbox"/> DPR006, 6” butterfly damper with seal (\$ _____) <input type="checkbox"/> DPR008, 8” butterfly damper with seal (\$ _____) <input type="checkbox"/> DPR010, 10” butterfly damper with seal (\$ _____) The damper should be installed just above the perimeter of the heated space (the ceiling). This reduces the amount of cold or hot air traveling down the duct into the kitchen.

F	Duct Fittings (Duct Configuration) For best performance, duct pipe and fittings should be rigid metal and the same diameter as the duct pipe. Some installations may require small sections of metal flex duct. If possible, avoid “S” or back-to-back elbows. If multiple elbows must be used, work to place at least 24” between elbows. Duct fittings are typically supplied and installed by HVAC subcontractors.
G	Distance Between Elbow and Duct Silencer (Duct Configuration) To reduce turbulence and air-noise, the silencer should be installed at least twice the diameter of the duct from any elbow. - If using 8” duct, this length of duct should be at least 16”. - If using 10” duct, this length of duct should be at least 20”.
H	Fast Clamps <input type="checkbox"/> FC6, 6” Neoprene Lined Metal Clamps (\$ _____) <input type="checkbox"/> FC8, 8” Neoprene Lined Metal Clamps (\$ _____) <input type="checkbox"/> FC10, 10” Neoprene Lined Metal Clamps (\$ _____) The purpose of Fast Clamps is to reduce the motor vibration sound transmitted through the metal duct by replacing a small section of the duct with a section of vibration-absorbing Neoprene. Fast Clamps are sold in pairs and for best sound reduction, install one on each side of the blower or duct silencer. Attach the Fast Clamp to the blower with sheet-metal screws and tape. However, it is best to NOT screw the Fast Clamp to the duct pipe as this will create a continuous metal-to-metal contact. Also, for best sound reduction, the duct pipe should NOT touch the blower inlet collar inside of the Fast Clamp. This would also create metal-to-metal contact. If a duct silencer is included, it can be installed in the same manner.
I	Duct Silencer <input type="checkbox"/> PSS008, 8” Duct Silencer (\$ _____) <input type="checkbox"/> PSS010, 10” Duct Silencer (\$ _____) Duct silencers reduce the motor sound inside the duct by 65-80%! Although not required, if there is sufficient space, it is highly recommended that EVERY INSTALLATION include a duct silencer. For additional sound reduction, two silencers can be installed end-to-end. In installations requiring the blower be in a chase or wood-type hood over the range (e.g., no attic above the kitchen), the duct silencer will not be as effective in absorbing motor noise. In addition, there will likely be motor sound transmitted through the walls of the chase, bypassing the duct silencer. <i>Where possible—attic or remote installations are always recommended.</i> Duct silencers have no moving parts and can be attached with pipe strap to a structural support.
J	Duct Length between Duct Silencer and Blower (Duct Configuration) It is best to place the duct silencer within 2 - 4 feet of the blower for maximum noise reduction. For best sound reduction, do not fasten the silencer directly to inlet of the blower.
K	In-Line Blower (use only if roof or wall mounted remote blower is not used) <input type="checkbox"/> PSD006, 392 CFM, 6” Blower, Variable Speed Fan (will also need a 6” x 8” duct transition) (\$ _____) <input type="checkbox"/> PSD008, 836 CFM, 8” Blower, Variable Speed Fan (\$ _____) <input type="checkbox"/> PSD010, 1266 CFM, 10” Blower, Variable Speed Fan (\$ _____) _____ (other UL listed model). (\$ _____) For best efficiency, the in-line blower should be installed near or slightly beyond the mid-point of the overall venting system. However, the further the in-line blower is installed from the liner, the quieter the installation will be. DO NOT attach the blower directly to the liner. If a 3-speed blower is used, the variable-speed control should be replaced with a 3-speed switch provided by others (Item C). Trade-Wind® variable-speed, in-line blowers are to be wired directly to the liner’s variable-speed fan control. The in-line blower’s mounting brackets are designed for flexible and easy installation at any angle—horizontal, vertical or diagonal. The brackets should be bolted directly to a 2” x 4” type wood framing structure (e.g., an attic truss) or suspended by threaded rod or angle iron. The installation should be sufficient to support the blower’s weight.
L	Roof or Wall Mounted Remote Blower (include ONLY if in-line blower is not used) <input type="checkbox"/> _____ (Other UL listed brand) (\$ _____) If a 3-speed roof or wall-mounted blower is used, it is necessary to use a 3-speed fan control (Item C). <input type="checkbox"/> Roof Cap or Wall Cap Use an 8” or 10” roof or wall cap, if remote blower is not used. (\$ _____) (Supplied by others)

These guidelines are the manufacturer’s suggestions. Always observe local municipal and state building codes. Trade-Wind has a policy of continuous improvements and reserves the right to modify at any time, without notice, any of its products, features, designs, components and specifications. For exact dimensions, see the Installation Instructions included with each product. Some features may be slightly different than shown on product literature.

For questions regarding these products or copies of Installation Instructions, contact your Trade-Wind® Dealer or Customer Service at T-WUSA.com