

DCS PICTURE PRICE GUIDE

DCS

AUGUST 1, 2021

TABLE OF CONTENTS

Series 9 Grills01
Series 9 Grill Attachments02
Series 7 Grills04
Series 7 Grill Attachments08
Joining Solutions09
Freestanding Grill Carts10
Cart Accessories and Side Shelves12
Refrigeration13
Refrigeration Accessories14
Beer Dispensers15
Beverage Chiller And Accessory16
Access Drawers17
Access Doors19
Tower Drawers21
Trash Bin23
Dry Pantry24
Outdoor Warming Drawer25
Built-In Patio Heater26
Insulated Jackets27
Storage Units28
Grill Covers29
Accessories33

SERIES 9 GRILLS



MODEL no. (Natural / LP)	BEI-48RC-N / BEI-48RC-L	BEI-36RC-N / BEI-36RC-L
Price (UMRP)	\$6,699	\$5,699
SKU (Natural / LP)	71437 / 71438	71439 / 71440
Type of appliance	48" Series 9 Grill	36" Series 9 Grill
Product Dimensions	D: 26 7/8" x W: 47 15/16" x H: 27 1/4"	D: 26 7/8" x W: 35 15/16" x H: 27 1/4"
Cutout Dimensions	D: 22 3/4" x W: 45 3/4" x H: 10 1/8"	D: 22 3/4" x W: 34 1/2" x H: 10 1/8"
Cooking Surface Area	1593 sq in	1164 sq in
Primary Cooking Area	855 sq in	630 sq in
Secondary Cooking Area	738 sq in	534 sq in
Features		
Full Surface Searing	●	●
Double Sided Grill Grates	Flat and angled position	Flat and angled position
Grease Management System™	●	●
Secondary cooking	2-level racks and tray	2-level racks and tray
Full charcoal burner/smoker	●	●
Giddle Plate	BGC-GP (optional) (\$319)	BGC-GP (optional) (\$319)
Hybrid IR Burner	BGC-IR (optional) (\$319)	BGC-IR (optional) (\$319)
Rotisserie	●	●
One Step Direct Burner Ignition	Hot surface ignition	Hot surface ignition
304 Grade Stainless Steel	●	●
Hood Temperature Gauge	●	●
Total Power in BTU (NG)	118,000	89,000
U-Burner Power in BTU (NG)	4 x 25,000	3 x 25,000
Rotisserie Burner Power in BTU (NG)	18,000	14,000
Install Options		
Built-in	● (Optional insulated jacket BGA48-IJS (\$869) / BGA54-IJS (\$919))	● (Optional insulated jacket BGA36-IJS (\$819) / BGA42-IJS (\$839))
On Cart (to be ordered separately)	CAD1-48E (\$2,399)	CAD1-36E (\$1,999)
Cover Options (Purchased Separately)		
Built-in / On Cart	ACBI-48E (\$169) / ACC-48E (\$249)	ACBI-36E (\$139) / ACC-36E (\$209)
Gas Requirements		
1/2" NPT Male	●	●
LP Hose with Regulator and Type 1 Connector (LP only)	●	●
Optional Accessories		
6" Series 9 Accessory Storage Unit	ASE6-48 (\$299)	ASE6-36 (\$299)
Warranty		
Limited Lifetime Warranty on Select Components* Labor	● Limited 2 years	● Limited 2 years

SERIES 9 GRILL ATTACHMENTS



MODEL no. (Natural / LP)	BE1-30AG-N / BE1-30AG-L	GDE1-30-N / GDE1-30-L	GDSBE1-302-N / GDSBE1-302-L
Price (UMRP)	\$3,299	\$3,499	\$2,799
SKU (Natural / LP)	71441 / 71442	71464 / 71465	71469 / 71470
Type of appliance	30" Series 9 All Grill	30" Series 9 Griddle	30" Series 9 Double Side Burner / Griddle
Product Dimensions (excluding covers)	D: 26 7/8" x W: 30" x H: 10 1/2"	D: 26 7/8" x W: 30" x H: 10 1/2"	D: 26 7/8" x W: 30" x H: 10 1/2"
Cutout Dimensions (proud installation)	D: 22 3/4" x W: 28 1/2" x H: 10 1/8"	D: 22 3/4" x W: 28 1/2" x H: 10 1/8"	D: 22 3/4" x W: 28 1/2" x H: 10 1/8"
Cooking Surface Area	525 sq in	500 sq in	244 sq in
Features			
Double Sided Grill Grates	•		
Grease Management System™	•		
Thermostat control		•	
Flame failure		•	
304 Stainless Steel Griddle Plate		•	•
Dual temperature zones		•	
Side Burners			•
Hot Surface Ignition	•	•	•
One Step Direct Burner Ignition			
Illuminated Dials	•	•	•
Metal dials	•	•	•
Removable Drip Tray	•	•	•
Stainless Steel Cover incl.	•	•	•
Total Power in BTU (NG)	50,000	40,000	46,000
U-Burner Power in BTU (NG)	2 x 25,000	2 x 20,000	12,000
Number of U-burners	2	2	1
Side Burner Power in BTU			2 x 17,000
Install Options			
Built-in	•	•	•
On Cart (to be ordered separately)	CAD1-30E (\$1,499)	CAD1-30E (\$1,499)	CAD1-30E (\$1,499)
Cover Options (Purchased Separately)			
Built-in	BFG30-ACBI (\$139)	BFG30-ACBI (\$139)	BFG30-ACBI (\$139)
On Cart			
Gas Requirements			
1/2" NPT Male with a 3/8" Flare Adapter	•	•	•
LP Hose with Regulator and Type 1 Connector (LP only)	•	•	•
Warranty			
Limited Lifetime Warranty on Select Components*	•	•	•
Labor	Limited 2 years	Limited 2 years	Limited 2 years

SERIES 9 GRILL ATTACHMENTS



MODEL no. (Natural / LP)	PBE1-24-N / PBE1-24-L	SBE1-142-N / SBE1-142-L
Price (UMRP)	\$2,399	\$1,349
SKU (Natural / LP)	71466 / 71467	71471 / 71472
Type of appliance	24" Series 9 Power Burner	14" Series 9 Double Side Burner
Product Dimensions (excluding covers)	D: 26 7/8" x W: 24" x H: 10 1/2"	D: 26 7/8" x W: 14 11/16" x H: 10 5/8"
Cutout Dimensions (proud installation)	D: 22 3/4" x W: 22 1/2" x H: 10 1/8"	D: 22 3/4" x W: 12 1/8" x H: 10 1/8"
Features		
2 piece removable grates	●	
Wok friendly trivet	●	
Cast brass burner	●	
Hot surface Ignition	●	●
Removable drip pan	●	
Small pan insert	●	
One Step Direct Burner Ignition		
Illuminated Dials	●	●
Metal dials	●	●
Removable Drip Tray	●	
Stainless Steel Cover incl.	●	●
Total Power in BTU	70,000	34,000
Minimum power in BTU	1,300	
Outer ring maximum BTU	40,000	
Inner ring maximum BTU	30,000	
Number of Side Burners		2
Side Burner Power in BTU		2 x 17,000
Install Options		
Built-in	● Optional insulated jacket BGA24-IJS (\$619)	●
On Cart (to be ordered separately)		
Gas Requirements		
1/2" NPT Male with a 3/8" Flare Adapter	●	●
LP Hose with Regulator and Type 1 Connector (LP only)	●	●
Warranty		
Limited Lifetime Warranty on Select Components*	●	●
Labor	Limited 2 years	Limited 2 years

SERIES 7 GRILLS



MODEL no. (Natural / LP)	BH1-48R-N / BH1-48R-L	BH1-48RS-N / BH1-48RS-L
Price (UMRP)	\$5,499	\$5,299
SKU (Natural / LP)	71444 / 71445	71446 / 71447
Type of appliance	48" Series 7 Grill	48" Series 7 Grill with Integrated Side Burners
Product Dimensions	D: 26 5/8" x W: 47 7/8" x H: 24 1/4"	D: 26 5/8" x W: 47 7/8" x H: 24 1/4"
Cutout Dimensions	D: 22 3/4" x W: 45 3/4" x H: 10 1/8"	D: 22 3/4" x W: 45 3/4" x H: 10 1/8"
Cooking Surface Area	1182 sq in	1115 sq in
Primary Cooking Area	855 sq in	630 sq in
Warming Rack Area	327 sq in	241 sq in
Side Burner Area		244 sq in
Features		
Full Surface Searing	●	●
Double Sided Grill Grates	●	●
Grease Management System™	●	●
Warming Rack	●	●
Griddle Plate	BGC-GP (optional) (\$319)	BGC-GP (optional) (\$319)
Hybrid IR Burner	BGC-IR (optional) (\$319)	BGC-IR (optional) (\$319)
Rotisserie	●	●
Side Burners		●
One Step Direct Burner Ignition	Spark ignition	Spark ignition
304 Grade Stainless Steel	●	●
Hood Temperature Gauge	●	●
Total Power in BTU (NG)	121,500	126,500
U-Burner Power in BTU (NG)	4 x 25,000	3 x 25,000
Side Burner Power in BTU (NG)		2 x 17,000
Rotisserie Burner Power in BTU (NG)	18,000	14,000
Smoker Burner Power in BTU (NG)	3,500	3,500
Install Options		
Built-in	● (Optional insulated jacket BGA48-IJS (\$869) / BGA54-IJS (\$919))	● (Optional insulated jacket BGA48-IJS (\$869) / BGA54-IJS (\$919))
On Cart (to be ordered separately)	CAD1-48E (\$2,399)	CAD1-48E (\$2,399)
Cover Options (Purchased Separately)		
Built-in / On Cart	ACBI-48 (\$169) / ACC-48 (\$249)	ACBI-48SB (\$169) / ACC-48SB (\$229)
Gas Requirements		
1/2" NPT Male with a 3/8" Flare Adapter	●	●
LP Hose with Regulator and Type 1 Connector (LP only)	●	●
Optional Accessories		
6" Series 7 Accessory Storage Unit	ASH6-48 (\$299)	ASH6-48 (\$299)
Warranty		
Limited Lifetime Warranty on Select Components*	●	●
Labor	Limited 2 years	Limited 2 years

SERIES 7 GRILLS



MODEL no. (Natural / LP)	BH1-36R-N / BH1-36R-L
Price (UMRP)	\$4,499
SKU (Natural / LP)	71448 / 71449
Type of appliance	36" Series 7 Grill
Product Dimensions	D: 26 5/8" x W: 35 7/8" x H: 24 1/4"
Cutout Dimensions	D: 22 3/4" x W: 34 1/2" x H: 10 1/8"
Cooking Surface Area	871 sq in
Primary Cooking Area	630 sq in
Warming Rack Area	241 sq in
Side Burner Area	
Features	
Full Surface Searing	●
Double Sided Grill Grates	●
Grease Management System™	●
Warming Rack	●
Griddle Plate	BGC-GP (optional) (\$319)
Hybrid IR Burner	BGC-IR (optional) (\$319)
Rotisserie	●
Side Burners	●
One Step Direct Burner Ignition	●
304 Grade Stainless Steel	●
Hood Temperature Gauge	●
Total Power in BTU (NG)	92,500
U-Burner Power in BTU (NG)	3 x 25,000
Rotisserie Burner Power in BTU (NG)	14,000
Smoker Burner Power in BTU (NG)	3,500
Install Options	
Built-in	● (Optional insulated jacket BGA36-IJS (\$819) / BGA42-IJS (\$839))
On Cart (to be ordered separately)	CAD1-36E (\$1,999)
Cover Options (Purchased Separately)	
Built-in / On Cart	ACBI-36 (\$139) / ACC-36 (\$209)
Gas Requirements	
1/2" NPT Male with a 3/8" Flare Adapter	●
LP Hose with Regulator and Type 1 Connector (LP only)	●
Optional Accessories	
6" Series 7 Accessory Storage Unit	ASH6-36 (\$299)
Warranty	
Limited Lifetime Warranty on Select Components*	●
Labor	Limited 2 years

SERIES 7 GRILLS



MODEL no. (Natural / LP)	BH1-30R-N / BH1-30R-L	BGC30-BQ-N / BGC30-BQ-L
Price (UMRP)	\$3,199	\$2,499
SKU (Natural / LP)	71450 / 71451	71452 / 71453
Type of appliance	30" Series 7 All Grill	30" Series 7 Grill, Non-Rotisserie
Product Dimensions	D: 26 5/8" x W: 30" x H: 24 1/4"	D: 27 5/16" x W: 30" x H: 24 1/4"
Cutout Dimensions	D: 22 3/4" x W: 28 1/2" x H: 10 1/8"	D: 22 3/4" x W: 28 1/2" x H: 10 1/8"
Cooking Surface Area	748 sq in	748 sq in
Primary Cooking Area	553 sq in	553 sq in
Warming Rack Area	195 sq in	195 sq in
Features		
Full Surface Searing	●	●
Warming Rack	●	●
Rotisserie	●	
One Step Direct Burner Ignition	●	●
304 Grade Stainless Steel	●	●
Hood Temperature Gauge	●	
Total Power in BTU (NG)	64,000	50,000
U-Burner Power in BTU (NG)	2 x 25,000	2 x 25,000
Rotisserie Burner Power in BTU (NG)	14,000	
Install Options		
Built-in	● (Optional insulated jacket BGB30-IJS (\$719)	● (Optional insulated jacket BGB30-IJS (\$719)
On Cart (to be ordered separately)	CSS-30 (\$999) / CAD1-30E (\$1,499)	CSS-30 (\$999) / CAD1-30E (\$1,499)
Cover Options (Purchased Separately)		
Built-in / On Cart	ACBI-30 (\$129) / ACC-30 (\$179)	ACBI-30 (\$129) / ACC-30 (\$179)
Gas Requirements		
1/2" NPT Male with a 3/8" Flare Adapter	●	●
LP Hose with Regulator and Type 1 Connector (LP only)	●	●
Warranty		
Limited Lifetime Warranty on Select Components*	●	●
Labor	Limited 2 years	Limited 2 years

SERIES 7 GRILL ATTACHMENTS



MODEL no. (Natural / LP)	BFGC-30G-N / BFGC-30G-L	BFGC-30BGD-N / BFGC-30BGD-L
Price (UMRP)	\$1,999	\$1,999
SKU (Natural / LP)	71454 / 71455	71474 / 71475
Type of appliance	30" Series 7 All Grill	30" Series 7 Side Burner and Griddle
Product Dimensions (excluding covers)	D: 26 5/8" x W: 30" x H: 10 1/2"	D: 26 5/8" x W: 30" x H: 10 1/2"
Cutout Dimensions (proud installation)	D: 22 3/4" x W: 28 1/2" x H: 10 1/8"	D: 22 3/4" x W: 28 1/2" x H: 10 1/8"
Cooking Surface Area	525 sq in	244 sq in
Features		
Full Surface Searing	●	●
Double Sided Grill Grates	●	
Grease Management System™	●	
Griddle Plate		●
Side Burners		●
One Step Direct Burner Ignition	●	●
304 Grade Stainless Steel	●	●
Stainless Steel Cover incl.	●	●
Total Power in BTU (NG)	50,000	46,000
U-Burner Power in BTU (NG)	2 x 25,000	1 x 12,000
Number of U-burners	2	1
Side Burner Power in BTU		2 x 17,000
Install Options		
Built-in	● (Optional insulated jacket BGB30-IJS (\$719)	● (Optional insulated jacket BGB30-IJS (\$719)
On Cart (to be ordered separately)	CSS-30 (\$999) / CAD1-30E (\$1,499)	CSS-30 (\$999) / CAD1-30E (\$1,499)
Cover Options (Purchased Separately)		
Built-in	BFG30-ACBI (\$139)	BFG30-ACBI (\$139)
On Cart		
Gas Requirements		
1/2" NPT Male with a 3/8" Flare Adapter	●	●
LP Hose with Regulator and Type 1 Connector (LP only)	●	●
Warranty		
Limited Lifetime Warranty on Select Components*	●	●
Labor	Limited 2 years	Limited 2 years

SERIES 7 GRILL ATTACHMENTS



MODEL no. (Natural / LP)	BGC132-BI-N / BGC132-BI-L
Price (UMRP)	\$1,049
SKU (Natural / LP)	71476 / 71477
Type of appliance	14" Series 7 Double Side Burner
Product Dimensions	D: 26 5/8" x W: 14 9/16" x H: 10 5/8"
Cut-out Dimensions (proud installation)	D: 22 3/4" x W: 12 1/8" x H: 10 1/8"
Features	
Built-in Installation	●
One Step Direct Burner Ignition	●
304 Grade Stainless Steel	●
Stainless Steel Cover incl.	●
Total Power in BTU	34,000
Side Burner Power in BTU	2 x 17,000
Install Options	
Built-in	●
Gas Requirements	
1/2" NPT Male with a 3/8" Flare Adapter	●
LP Hose with Regulator and Type 1 Connector (LP only)	●
Warranty	5 Year Limited warranty

JOINING SOLUTIONS



MODEL no.	BND-CNR	CAD30-BB	WR24RTD
Price (UMRP)	\$269	\$479	\$529
SKU	70896	70860	70878
Type of appliance	Bend Corner Bracket	Brazilian Cherry Wood Back Bar BFGC/CAD30	Wrapper, Refrigerator, Beer Tap, Drawers

Description

Create extra counter space for your Freestanding Outdoor Kitchen with the Corner Bracket and Solid Surface. The Corner Solid Surface can be bought separately, otherwise specifications are included for a customized surface to match your countertop. Rated to hold 200lbs.

This back bar attaches to your cart to create a full 360 degrees of service around your cart model grill. Utilize this as a service area or additional preparation area.

Integrate the DCS Outdoor Refrigerator, Refrigerated Drawers or Beer Dispenser with the rest of your Freestanding Outdoor Kitchen with a DCS Wrapper. This creates additional preparation and serving space. The Wrapper Solid Surface can be bought separately, otherwise specifications are included for a customized surface to match your countertop.

Warranty	Limited 2 Years	Limited 2 Years	Limited 2 Years
----------	-----------------	-----------------	-----------------



MODEL no.	CAD-BEND	WR15I
Price (UMRP)	\$619	\$489
SKU	70895	70875
Type of appliance	Bend Unit	Wrapper for Ice Maker

Description

Bend Units offer the flexibility to design your Freestanding Outdoor Kitchen to fit your space. Ideal if space is minimal, two Bend Units will turn a straight line-up into a 90° corner format. Specifications are included for a customized surface to match your countertop.

Integrate the DCS Ice Maker with the rest of your Freestanding Outdoor Kitchen with a DCS Wrapper. This creates additional preparation and serving space. Specifications are included for a customized surface to match your countertop.

Warranty	Limited 2 Years	Limited 2 Years
----------	-----------------	-----------------

FREESTANDING GRILL CARTS



MODEL no.	CAD1-48E	CAD1-36E
Price (UMRP)	\$2,399	\$1,999
SKU	71527	71526
Type of appliance	48" Grill CAD Cart with Access Drawers	36" Grill CAD Cart with Access Drawers
Product Dimensions (excluding handle)	D: 25 1/2" x W: 47 15/16" x H: 35 1/2"	D: 25 1/2" x W: 47 15/16" x H: 35 1/2"
Features		
Finish	304 Grade Stainless Steel	304 Grade Stainless Steel
Weather Resistant	•	•
Built-in Installation	•	•
Accessories Included		
Side Shelf Kit		
Optional Accessories		
Side Shelf Kit	CAD1-SK (\$299)	CAD1-SK (\$299)
Wastebasket Holder	WBH-ADR1CAD (\$199)	WBH-ADR1CAD (\$199)
Adjustable Leveling Feet to create a Stationary Cart	CAD-LVL (\$119)	CAD-LVL (\$119)
Tank Drawer Bottom Cover	TDBC-ADR1CAD (\$99)	TDBC-ADR1CAD (\$99)
Warranty	5 Year Limited warranty	5 Year Limited warranty



MODEL no.	CAD1-30E
Price (UMRP)	\$1,499
SKU	71525
Type of appliance	30" CAD Cart with Access Drawers
Product Dimensions (excluding handle)	D: 25 1/2" x W: 30" x H: 35 1/2"
Features	
Finish	304 Grade Stainless Steel
Weather Resistant	•
Built-in Installation	•
Accessories Included	
Side Shelf Kit	
Optional Accessories	
Side Shelf Kit	CAD1-SK (\$299)
Wastebasket Holder	WBH-ADR1CAD (\$199)
Adjustable Leveling Feet to create a Stationary Cart	CAD-LVL (\$119)
Tank Drawer Bottom Cover	TDBC-ADR1CAD (\$99)
Warranty	5 Year Limited warranty

FREESTANDING GRILL CARTS



MODEL no.	CSS-30
Price (UMRP)	\$999
SKU	71320
Type of appliance	30" CSS Cart with Single Door
Product Dimensions (excluding handle)	D: 25 1/2" x W: 30" x H: 35 3/4"
Features	
Finish	304 Grade Stainless Steel
Weather Resistant	●
Built-in Installation	●
Accessories Included	
Side Shelf Kit	1
Optional Accessories	
Side Shelf Kit	CSS-SK (\$99)
Back Bar	
Wastebasket Holder	
Adjustable Leveling Feet to create a Stationary Cart	
Tank Drawer Bottom Cover	
Warranty	5 Year Limited warranty

CART ACCESSORIES AND SIDE SHELVES

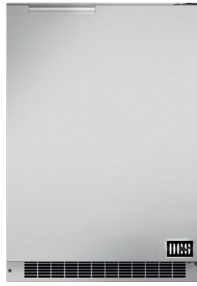


MODEL no.	CAD1-SK	CSS-SK	CAD-LVL
Price (UMRP)	\$299	\$99	\$119
SKU	71189	71323	70862
Type of appliance	Side Shelf for CAD Cart	Side Shelf for CSS Cart	Leveling Legs for CAD Carts
Description	Attached to your Freestanding Cart, 24" heavy-duty, stainless steel side shelf kits offer a sturdy expansive workspace that folds down when not in use.	Attached to your Freestanding Cart, 20" heavy-duty stainless steel side shelf kits offer a sturdy expansive workspace that folds down when not in use.	The Leveling Legs turn your Freestanding Kitchen into a stationary kitchen.



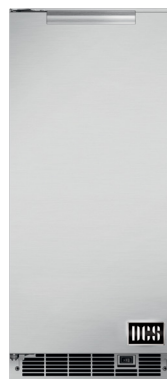
MODEL no.	AP-CBB	AP-CBW
Price (UMRP)	\$49	\$249
SKU	71197	71321
Type of appliance	Bamboo Cutting Board / CAD Side Shelf Insert	Dark Walnut Cutting Board / CAD Side Shelf Insert
Description	A sturdy cutting board is an essential in the outdoor kitchen. DCS cutting boards are crafted from solid Bamboo, chosen for its quality and beauty. These boards are designed to convert your CAD Cart Side Shelf into a convenient cutting surface.	A sturdy cutting board is an essential in the outdoor kitchen. This DCS cutting board is crafted from solid Maple, chosen for its quality and beauty. The board is designed to convert your CAD Cart Side Shelf into a convenient cutting surface.

REFRIGERATION



MODEL no.	RF24RE4 / RF24LE4	RF24DE4
Price (UMRP)	\$2,899	\$3,999
SKU	71513 / 71514 (right hinge / left hinge)	71512
Type of appliance	24" Outdoor Refrigerator	24" Double Refrigerator Drawers
Product Dimensions	D: 23 23/32" (excluding handle) x W: 23 7/8" x H: 33 3/4" - 34 3/4"	D: 23 23/32" (excluding handle) x W: 23 7/8" x H: 33 3/4" - 34 3/4"
Cut-out Dimensions (proud installation)	D: 24" x W: 24" x H: 34 1/2"	D: 24" x W: 24" x H: 34 1/2"
Features		
Weather Resistant	•	•
304 Grade Stainless Steel	•	•
Capacity	6.1 cu ft	5.0 cu ft
Built-in or Freestanding	•	•
Outdoor Listed (CSA or UL)	•	•
Energy Star	•	•
Electrical Requirements	120V 60Hz	120V 60Hz
Warranty	5 Year Limited warranty	5 Year Limited warranty

REFRIGERATION ACCESSORIES



MODEL no.	RF151R2 / RF151L2
Price (UMRP)	\$3,499
SKU	71509 / 71510 (right hinge / left hinge)
Type of appliance	15" Outdoor Clear Ice Maker
Product Dimensions	D: 21 1/2" (excluding handle) x W: 14 7/8" x H: 34 1/4"
Cut-out Dimensions (proud installation)	D: 24" x W: 15" x H: 34 1/2"
Features	
Weather Resistant	•
304 Grade Stainless Steel	•
Capacity	35lbs of clear & square ice per day
Built-in or Freestanding	•
Outdoor Listed (CSA or UL)	•
Energy Star	•
Electrical Requirements	120V 60Hz
Warranty	5 Year Limited warranty



MODEL no.	RFIDP
Price (UMRP)	\$649
SKU	70965
Type of appliance	Ice Maker Drain Pump
Description	For use with the RF151 Ice Maker if gravity drain cannot be utilized.

BEER DISPENSERS



MODEL no.	RF24TR2 / RF24TL2	RF24BTL2 / RF24BTL2
Price (UMRP)	\$3,699	\$3,999
SKU	71517 / 71518 (right hinge / left hinge)	71515 / 71516 (right hinge / left hinge)
Type of appliance	24" Outdoor Beer Dispenser - Single Tap	24" Outdoor Beer Dispenser - Dual Tap
Product Dimensions	D: 23 23/32" (excluding handle) x W: 23 7/8" x H: 33 3/4 - 34 3/4" (49 1/4" to top of tap handle)	D: 23 23/32" (excluding handle) x W: 23 7/8" x H: 33 3/4 - 34 3/4" (49 1/4" to top of tap handle)
Cut-out Dimensions (proud installation)	D: 24" x W: 24" x H: 34 1/2"	D: 24" x W: 24" x H: 34 1/2"
Features		
Weather Resistant	•	•
304 Grade Stainless Steel	•	•
Capacity	1/2 or 1/4 keg (5.7 cu ft)	1/2 or 1/4 or 2 x 1/6 kegs (5.7 cu ft)
Built-in or Freestanding	•	•
Outdoor Listed (CSA or UL)	•	•
Energy Star	•	•
Electrical Requirements	120V 60Hz	120V 60Hz
Warranty	5 Year Limited warranty	5 Year Limited warranty

BEVERAGE CHILLER AND ACCESSORY



MODEL no.	BC25	BC-BTTLEAC-25	BC1-25AC
Price (UMRP)	\$1,199	\$269	\$369
SKU	71034	71505	71504
Type of appliance	25" Beverage Chiller/Sink	Beverage Chiller Accessory	Series 9 Beverage Chiller Bottle Holder Accessory Front
Product Dimensions (including lid)	D: 21 15/16" x W: 26 3/8" x H: 12 1/16"	D: 6 5/8" x W: 21 1/16" x H: 10 3/8"	D: 6 5/8" x W: 21 1/16" x H: 10 3/8"
Features			
Finish	304 Grade Stainless Steel	304 Grade Stainless Steel	304 Grade Stainless Steel
Weather Resistant	●	●	●
Built-in Installation	●	●	●
Capacity	17gal	1L bottles	1L bottles
Install Dimensions			
Cutout Width	24 3/16"		
Cutout Depth	21 1/16"		
Accessories			
Condiment Storage Containers	4		
Lid	●		
Warranty	5 Year Limited warranty	5 Year Limited warranty	5 Year Limited warranty

ACCESS DRAWERS



MODEL no.	ADR2-48	ADR2-36
Price (UMRP)	\$1,799	\$1,499
SKU	71481	71482
Type of appliance	48" Access Drawers	36" Access Drawers
Product Dimensions (excluding handle)	D: 25 1/2" x W: 47 15/16" x H: 21 7/8"	D: 25 1/2" x W: 35 15/16" x H: 21 7/8"
Features		
Finish	304 Grade Stainless Steel	304 Grade Stainless Steel
Weather Resistant	•	•
Built-in Installation	•	•
Install Dimensions (Proud)		
Cutout Height (proud installation)	20"	20"
Cutout Width (proud installation)	46"	34"
Cutout Depth (proud installation)	24" min.	24" min.
Product Dimensions (Flush)		
Cutout Height (flush installation)	22 1/16"	22 1/16"
Cutout Width (flush installation)	48 3/16"	36 3/16"
Cutout Depth (flush installation)	26" min.	26" min.
Optional Accessories		
Tank Drawer Bottom Cover	TDBC-ADRICAD (\$99)	TDBC-ADRICAD (\$99)
Wastebasket Holder	WBH-ADRICAD (\$199)	WBH-ADRICAD (\$199)
Warranty	Limited 2 Years Parts & Labor	Limited 2 Years Parts & Labor

ACCESS DRAWERS



MODEL no.	ADR2-30	ADR2-24
Price (UMRP)	\$1,199	\$899
SKU	71483	71484
Type of appliance	30" Access Drawers	24" Access Drawers
Product Dimensions (excluding handle)	D: 25 1/2" x W: 30" x H: 21 7/8"	D: 25 1/2" x W: 24" x H: 21 7/8"
Features		
Finish	304 Grade Stainless Steel	304 Grade Stainless Steel
Weather Resistant	●	●
Built-in Installation	●	●
Install Dimensions (Proud)		
Cutout Height (proud installation)	20"	20"
Cutout Width (proud installation)	28"	22"
Cutout Depth (proud installation)	24" min.	24" min.
Product Dimensions (Flush)		
Cutout Height (flush installation)	22 1/16"	22 1/16"
Cutout Width (flush installation)	30 3/16"	24 3/16"
Cutout Depth (flush installation)	26" min.	26" min.
Optional Accessories		
Tank Drawer Bottom Cover	TDBC-ADRICAD (\$99)	TDBC-ADRICAD (\$99)
Wastebasket Holder	WBH-ADRICAD (\$199)	WBH-ADRICAD (\$199)
Warranty	Limited 2 Years Parts & Labor	Limited 2 Years Parts & Labor

ACCESS DOORS



MODEL no.	ADNI-20X48	ADNI-20X36
Price (UMRP)	\$649	\$549
SKU	71488	71489
Type of appliance	48" Access Doors	36" Access Doors
Product Dimensions (excluding handle)	D: 6 1/4" x W: 47 15/16" x H: 21 7/8"	D: 6 1/4" x W: 35 15/16" x H: 21 7/8"
Features		
Finish	304 Grade Stainless Steel	304 Grade Stainless Steel
Weather Resistant	●	●
Built-in Installation	●	●
Install Dimensions (Proud)		
Cutout Height (proud installation)	20"	20"
Cutout Width (proud installation)	46"	34"
Product Dimensions (Flush)		
Cutout Height (flush installation)	22 1/16"	22 1/16"
Cutout Width (flush installation)	48 3/16"	36 3/16"
Warranty	Limited 2 Years Parts & Labor	Limited 2 Years Parts & Labor

ACCESS DOORS



MODEL no.	ADN1-20X30	ADN1-20X24
Price (UMRP)	\$499	\$449
SKU	71490	71491
Type of appliance	30" Access Doors	24" Access Door
Product Dimensions (excluding handle)	D: 6 1/4" x W: 30" x H: 21 7/8"	D: 6 1/4" x W: 24" x H: 21 7/8"
Features		
Finish	304 Grade Stainless Steel	304 Grade Stainless Steel
Weather Resistant	●	●
Built-in Installation	●	●
Install Dimensions (Proud)		
Cutout Height (proud installation)	20"	20"
Cutout Width (proud installation)	28"	22"
Product Dimensions (Flush)		
Cutout Height (flush installation)	22 1/16"	22 1/16"
Cutout Width (flush installation)	30 3/16"	24 3/16"
Warranty	Limited 2 Years Parts & Labor	Limited 2 Years Parts & Labor

TOWER DRAWERS



MODEL no.	TDT1-20	TDD1-20
Price (UMRP)	\$1,349	\$1,049
SKU	71494	71495
Type of appliance	20" Tower Drawer Triple	20" Tower Drawer Double
Product Dimensions (excluding handle)	D: 25" x W: 20 5/16" x H: 29 1/8"	D: 25" x W: 20 5/16" x H: 21 7/8"
Features		
Finish	304 Grade Stainless Steel	304 Grade Stainless Steel
Weather Resistant	•	•
Built-in Installation	•	•
Install Dimensions (Proud)		
Cutout Height (proud installation)	28"	20 11/16"
Cutout Width (proud installation)	18 7/8"	18 7/8"
Cutout Depth (proud installation)	24" min.	24" min.
Product Dimensions (Flush)		
Cutout Height (flush installation)	29 5/16"	22 1/16"
Cutout Width (flush installation)	20 1/2"	20 1/2"
Cutout Depth (flush installation)	26" min.	26" min.
Warranty	Limited 2 Years Parts & Labor	Limited 2 Years Parts & Labor

TOWER DRAWERS



MODEL no.	TDS1-20
Price (UMRP)	\$749
SKU	71496
Type of appliance	20" Tower Drawer Single
Product Dimensions (excluding handle)	D: 25" x W: 20 5/16" x H: 9 5/8"
Features	
Finish	304 Grade Stainless Steel
Weather Resistant	●
Built-in Installation	●
Install Dimensions (Proud)	
Cutout Height (proud installation)	8 7/16"
Cutout Width (proud installation)	18 7/8"
Cutout Depth (proud installation)	24" min.
Product Dimensions (Flush)	
Cutout Height (flush installation)	9 13/16"
Cutout Width (flush installation)	20 1/2"
Cutout Depth (flush installation)	26" min.
Warranty	Limited 2 Years Parts & Labor

TRASH BIN



MODEL no.	TB1-20
Price (UMRP)	\$899
SKU	71497
Type of appliance	20" Double Trash/ Recycle Bin
Product Dimensions (excluding handle)	D: 25" x W: 20 5/16" x H: 29 1/8"
Features	
Finish	304 Grade Stainless Steel
Weather Resistant	●
Built-in Installation	●
Install Dimensions (Proud)	
Cutout Height (proud installation)	28"
Cutout Width (proud installation)	18 7/8"
Cutout Depth (proud installation)	24" min.
Product Dimensions (Flush)	
Cutout Height (flush installation)	29 5/16"
Cutout Width (flush installation)	20 1/2"
Cutout Depth (flush installation)	26" min.
Accessories	
Trash Bins Included	2
Size Trash Bins	10gal
Warranty	Limited 2 Years Parts & Labor

DRY PANTRY



MODEL no.	DP1-42
Price (UMRP)	\$2,499
SKU	71493
Type of appliance	42" Dry Pantry
Product Dimensions (excluding handle)	D: 25 11/16" x W: 42" x H: 30 1/2"
Features	
Finish	304 Grade Stainless Steel
Weather Resistant	●
Built-in Installation	●
Internal Drawer Height	3 11/16"
Internal Drawer Width	11 7/8"
Internal Drawer Depth	19 3/8"
Internal Wire Shelf Width	19 7/8"
Internal Wire Shelf Depth	21 7/8"
Storage Capacity LH	5 cu ft
Storage Capacity RH	7 cu ft
Storage Bin Height	4"
Install Dimensions (Proud)	
Cutout Height (proud installation)	29 3/16"
Cutout Width (proud installation)	40 7/16"
Cutout Depth (proud installation)	24 11/16" min.
Product Dimensions (Flush)	
Cutout Height (flush installation)	30 11/16"
Cutout Width (flush installation)	33 1/2"
Cutout Depth (flush installation)	42 3/16"
Accessories	
Removable Storage Bins	3 (left)
Heavy Gauge Wire Shelves	2 (right)
Warranty	Limited 2 Years Parts & Labor

OUTDOOR WARMING DRAWER



MODEL no.	WD1-30-SSOD
Price (UMRP)	\$1,599
SKU	71507
Type of appliance	30" Outdoor Warming Drawer
Product Dimensions (excluding handle)	D: 26 1/8" x W: 30" x H: 16"
Features	
Finish	304 Grade Stainless Steel
Weather Resistant	●
Built-in Installation	●
Install Dimensions (Proud)	
Cutout Height (proud installation)	14 7/16"
Cutout Width (proud installation)	28 3/8"
Cutout Depth (proud installation)	24 3/16"
Product Dimensions (Flush)	
Cutout Height (flush installation)	16 3/8"
Cutout Width (flush installation)	30 3/16"
Cutout Depth (flush installation)	26 3/16"
Accessories	
Removable Storage Bins	●
Control	Thermostatically Controlled
Low Setting	140° - 170°F
Medium Setting	170° - 200°F
High Setting	200° - 230°F
Electrical Requirements	120V 60Hz
Warranty	5 Year Limited warranty

BUILT-IN PATIO HEATER



MODEL no.	DRH-48N
Price (UMRP)	\$1,499
SKU	71531
Type of appliance	Built-in Patio Heater
Product Dimensions (excluding handle)	D: 7 3/4" x W: 48" x H: 10 1/4"
Features	
Finish	304 Grade Stainless Steel
Weather Resistant	●
BTU Rating	56,000 BTU
Accessories	
Optional Remote Control	DRH-RMT
Optional Remote Control SKU	70797
Optional Remote Control PRICE (USD)^	\$189.00
Gas Requirements	Max. Pressure: 1/2 psig, Min. Pressure: 6" W.C. Manifold Pressure: 5" W.C. Internal 5" W.C. Regulator
Electrical Requirements	120V 60Hz
Warranty	5 Year Limited warranty



MODEL no.	DRH-RMT
Price (UMRP)	\$199
SKU	70797
Type of appliance	On-Off Remote Control for DRH-48

INSULATED JACKETS



MODEL no.	BGA54-IJS	BGA48-IJS
Price (UMRP)	\$919	\$869
SKU	71334	70172
Type of appliance	54" Insulated Jacket	48" Insulated Jacket
Product Dimensions	D: 23 3/4" x W: 59 7/8" x H: 11 1/8"	D: 23 3/4" x W: 51 1/2" x H: 11 1/8"
Cutout Dimensions	D: 23 3/4" x W: 60" x H: 11 1/8"	D: 23 3/4" x W: 51 5/8" x H: 11 1/8"
Approx. Shipping Weight	79lbs (estimate, product only excluding packaging)	106lbs
Features		
Finish	304 Grade Stainless Steel	304 Grade Stainless Steel
Weather Resistant	●	●
Warranty	Limited 2 Years Parts & Labor	Limited 2 Years Parts & Labor



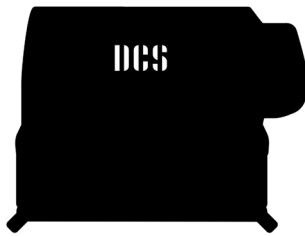
MODEL no.	BGA42-IJS	BGA36-IJS	BGB30-IJS
Price (UMRP)	\$839	\$819	\$719
SKU	71335	70167	70859
Type of appliance	42" Insulated Jacket	36" Insulated Jacket	30" Insulated Jacket
Product Dimensions	D: 23 3/4" x W: 47 13/16" x H: 11 1/8"	D: 23 3/4" x W: 40 3/8" x H: 11 1/8"	D: 23 3/4" x W: 34 5/8" x H: 11 1/8"
Cutout Dimensions	D: 23 3/4" x W: 48" x H: 11 1/8"	D: 23 3/4" x W: 40 1/2" x H: 11 1/8"	D: 23 3/4" x W: 34 7/8" x H: 11 1/8"
Approx. Shipping Weight	66lbs (estimate, product only excluding packaging)	75lbs	53lbs
Features			
Finish	304 Grade Stainless Steel	304 Grade Stainless Steel	304 Grade Stainless Steel
Weather Resistant	●	●	●
Warranty	Limited 2 Years Parts & Labor	Limited 2 Years Parts & Labor	Limited 2 Years Parts & Labor

STORAGE UNITS

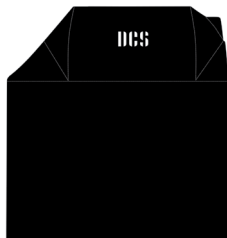


MODEL no.	ASE6-48 / ASE6-36	ASH6-48 / ASH6-36
Price (UMRP)	\$299	\$299
SKU	71405 / 71332 (48" / 36")	71406 / 71333 (48" / 36")
Type of appliance	6" Series 9 Accessory Storage Unit	6" Series 7 Accessory Storage Unit
Product Dimensions (excluding handle)	D: 26 7/8" x W: 7 11/16" x H: 11 13/64"	D: 26 7/8" x W: 7 3/8" x H: 11 13/64"
Features		
Finish	304 Grade Stainless Steel	304 Grade Stainless Steel
Weather Resistant	●	●
Built-in Installation	●	●
Install Dimensions (Proud)	54" size	54" size
Cutout Height (proud installation)	10 1/8"	10 1/8"
Cutout Width (proud installation)	52 1/8"	40 1/2"
Cutout Depth (proud installation)	22 3/4" min.	22 3/4" min.
Warranty	Limited 2 Years Parts & Labor	Limited 2 Years Parts & Labor

GRILL COVERS

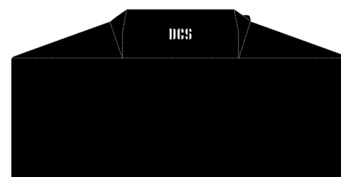


MODEL no.	ACBI-30	BFG30-ACBI
Price (UMRP)	\$129	\$139
SKU	71543	71538
Type of appliance	30" Series 7 Built-In Grill Cover	30" Series 7 Built-In Grill Cover
Features		
Finish	PVC, 400 Denier Polyester	PVC, 400 Denier Polyester
Fits DCS Grill	BH1-30R-N, BH1-30R-L	BFGC-30G-N, BFGC-30G-L
Waterproof	•	•
Double Layer Construction	•	•
Level 4 UV Protection	•	•
Anti-Cold-Crack	•	•
Innerflow Section	•	•

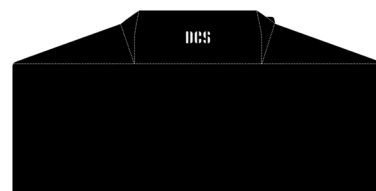
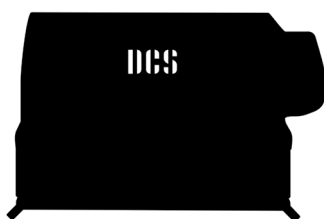


MODEL no.	ACC-30SB	ACC-30
Price (UMRP)	\$179	\$179
SKU	71549	71548
Type of appliance	30" Series 7 Grill On-Cart Cover with side burner	30" Series 7 Grill On-Cart Cover
Features		
Finish	PVC, 400 Denier Polyester	PVC, 400 Denier Polyester
Fits DCS Grill	BGC30-BQ-N, BGC30-BQ-L	BH1-30R-N, BH1-30R-L
Waterproof	•	•
Double Layer Construction	•	•
Level 4 UV Protection	•	•
Anti-Cold-Crack	•	•
Innerflow Section	•	•

GRILL COVERS



MODEL no.	ACBI-36	ACC-36
Price (UMRP)	\$139	\$209
SKU	71542	71547
Type of appliance	36" Series 7 Built-in Grill Cover	36" Series 7 Grill On-Cart Cover
Features		
Finish	PVC, 400 Denier Polyester	PVC, 400 Denier Polyester
Fits DCS Grill	BH1-36R-N, BH1-36R-L	BH1-36R-N, BH1-36R-L
Waterproof	•	•
Double Layer Construction	•	•
Level 4 UV Protection	•	•
Anti-Cold-Crack	•	•
Innerflow Section	•	•

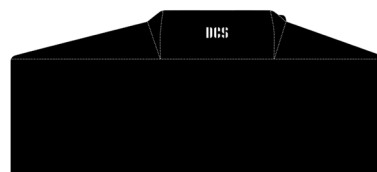


MODEL no.	ACBI-36E	ACC-36E
Price (UMRP)	\$139	\$209
SKU	71535	71537
Type of appliance	36" Series 9 Built-In Grill Cover	36" Series 9 Grill-On Cover
Features		
Finish	PVC, 400 Denier Polyester	PVC, 400 Denier Polyester
Fits DCS Grill	BE1-36RC-L, BE1-36RC-N	BE1-36RC-L, BE1-36RC-N
Waterproof	•	•
Double Layer Construction	•	•
Level 4 UV Protection	•	•
Anti-Cold-Crack	•	•
Innerflow Section	•	•

GRILL COVERS



MODEL no.	ACBI-48	ACBI-48SB
Price (UMRP)	\$169	\$169
SKU	71540	71541
Type of appliance	48" Series 7 Built-in Grill Cover	48" Series 7 Built-in Grill Cover
Features		
Finish	PVC, 400 Denier Polyester	PVC, 400 Denier Polyester
Fits DCS Grill	BH1-48R-N, BH1-48R-L	BH1-48RS-N, BH1-48RS-L
Waterproof	•	•
Double Layer Construction	•	•
Level 4 UV Protection	•	•
Anti-Cold-Crack	•	•
Innerflow Section	•	•



MODEL no.	ACC-48	ACC-48SB
Price (UMRP)	\$249	\$229
SKU	71545	71546
Type of appliance	48" Series 7 Grill On-Cart Cover	48" Series 7 Grill On-Cart Cover
Features		
Finish	PVC, 400 Denier Polyester	PVC, 400 Denier Polyester
Fits DCS Grill	BH1-48R-N, BH1-48R-L	BH1-48RS-N, BH1-48RS-L
Waterproof	•	•
Double Layer Construction	•	•
Level 4 UV Protection	•	•
Anti-Cold-Crack	•	•
Innerflow Section	•	•

GRILL COVERS



MODEL no.	ACBI-48E	ACC-48E
Price (UMRP)	\$169	\$249
SKU	71534	71536
Type of appliance	48" Series 9 Built-In Grill Cover	48" Series 9 Grill-On Cover
Features		
Finish	PVC, 400 Denier Polyester	PVC, 400 Denier Polyester
Fits DCS Grill	BE1-48RC-L, BE1-48RC-N	BE1-48RC-L, BE1-48RC-N
Waterproof	●	●
Double Layer Construction	●	●
Level 4 UV Protection	●	●
Anti-Cold-Crack	●	●
Innerflow Section	●	●

ACCESSORIES



MODEL no.	AA-HS	AA-DB
Price (UMRP)	\$99	\$99
SKU	71190	71168
Type of appliance	DCS Apron - Hickory Stripe	DCS Apron - Duck Brown
Description	A necessity for any serious griller, this DCS apron is generously sized and features a front storage pocket and adjustable neck band. Made in America from 100% Vintage Cotton Hickory Stripe and handfinished with brass fittings.	A necessity for any serious griller, this DCS apron is generously sized and features a front storage pocket and adjustable neck band. Made from 100% Vintage Cotton Duck Brown and handfinished with brass fittings.

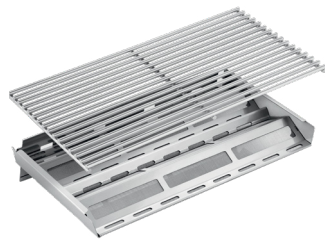


MODEL no.	ATS-CK3	AT-SPT	AT-TNG
Price (UMRP)	\$79	\$29	\$29
SKU	71202	71172	71173
Type of appliance	DCS Cook Tool Set (3 Piece)	DCS Grill Spatula	DCS Grill Tongs
Description	The DCS Cook Tools set features high grade stainless steel spatula, tongs and fork all with walnut handles and brass rivet detailing. Generously sized and perfectly weighted, DCS grill tools feel as good in your hand as they look.	The DCS Grill Spatula is crafted from high grade stainless steel with a walnut handle and brass rivet detailing. Generously sized and perfectly weighted, DCS grill tools feel as good in your hand as they look.	DCS Grill Tongs are crafted from high grade stainless steel with a walnut handle and brass rivet detailing. Generously sized and perfectly weighted, DCS grill tools feel as good in your hand as they look.

ACCESSORIES



MODEL no.	AT-MLT	ATS-SK6
Price (UMRP)	\$10	\$20
SKU	71336	71191
Type of appliance	Grease Management Grilling Multi-tool	DCS Grill Skewer Set
Description	Use the DCS Grill Multi-tool for easily lifting, moving hot greasy grates and scraping out the grease management system trough. Crafted from stainless steel and hand-finished with a walnut handle and brass rivet detailing, it is the perfect companion for your powerful grill.	DCS Skewers are an essential for the Grill Chef. Available in packs of six, these solid stainless steel skewers are robust and easy to clean.



MODEL no.	BGC-IR	BGC-GP
Price (UMRP)	\$319	\$319
SKU	71409	71410
Type of appliance	Hybrid Infrared Burner	Grill Griddle Plate
Description	The DCS Infrared Hybrid Burner delivers rapid heat-up with precise control of the heat turn-down, allowing great flexibility with what foods you are able to cook on the grill. The infrared burner also provides traditional sear lines on food, for the authentic grill experience.	Made of commercial quality plated stainless steel that insures a level cooking surface and even heat distribution, the DCS Grill Griddle Plate allows you to cook delicate items on your Grill with ease.

ACCESSORIES



MODEL no.	QDHKM30 1/2"
Price (UMRP)	\$179
SKU	70676
Type of appliance	Quick Disconnect Hose
Description	Includes 12" flexible gas hose, 1/2" male quick-disconnect on one end and 1/2" female flare swivel on the other. CSA certified for Natural or LP gas.



MODEL no.	TDBC-ADR1CAD
Price (UMRP)	\$99
SKU	70907
Type of appliance	Tank Drawer (Bottom Cover)
Description	For use with your Access Drawers or CAD Carts. The Tank Drawer Bottom Cover can convert your propane drawer into a deep storage drawer or a trash bin when used in conjunction with the Waste Basket Holder.

MODEL no.	WBH-ADR1CAD
Price (UMRP)	\$199
SKU	70906
Type of appliance	Waste Basket Holder
Description	In conjunction with the Tank Drawer Bottom Cover, you can convert your LP Tank Drawer into a convenient trash / recycle drawer. Bins are included with kit. For use with your Access Drawers or CAD Carts.

ACCESSORIES



MODEL no.	CW-20	WRGS
Price (UMRP)	\$199	\$39
SKU	70496	70403
Type of appliance	Commercial Wok	Wok Ring
Description	<p>A versatile accessory for both indoor and outdoor kitchens, this commercial-style stainless steel wok features a traditional rounded bottom, and a lightweight aluminum lid. A hardwood lid handle helps maintain safe-to-touch temperatures so you can safely remove and replace the lid while cooking. (Wok Ring is required for use).</p> <p>Wok ring attachment for side burner.</p>	

MODEL no.	BGA-4PC	BGA-6PC
Price (UMRP)	\$30	\$35
SKU	71422	71423
Type of appliance	4 FT Power Extension Cable	6 FT Power Extension Cable

MODEL no.	BGA-LB	BGA-PS
Price (UMRP)	\$70	\$20
SKU	71424	71425
Type of appliance	External Lighting Power Button	Power Splitter

DES