

viega

FLUSHING SYSTEM TECHNOLOGY

PRICE LIST BOOK 2020







CONTENTS

6

Viega flush plates

16

WC in-wall flushing carrier systems

20

Urinal in-wall flushing carrier systems

24

Sink and bidet carriers

26

Spare parts





Visign for Style

FLUSH PLATES BY VIEGA

Design for every bathroom

Whether in a family bathroom or public restroom, the flush plates of the Visign for Style series impress with their ease of operation and reliability. They also introduce fresh design highlights to the bathroom, proving that perfection does not have to be a luxury.

i THE BENEFITS

- The flush plates Visign for Style 10, 13 and 14 are mechanical.
- Visign for Style 12 utilizes bowden cables for activation.
- The flush plates Visign for Style 10 and 14 can be mounted flush with the tile. For flush mounting the plate, order the frame number **54935** (frame needs to be installed before tile and drywall).

VISIGN FOR STYLE STANDARD



Cover plate

Plastic, alpine white

Actuator

Plastic, alpine white

Part No. 54660 \$89.00



Cover plate

Plastic, chrome-plated

Actuator

Plastic, chrome-plated

Part No. 54670 \$121.00



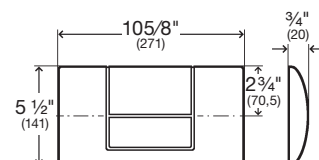
Cover plate

Plastic, matte chrome

Actuator

Plastic, matte chrome

Part No. 54665 \$121.00





Cover plate
Plastic, matte chrome
Actuator
Plastic, matte chrome
Part No. 54720 \$184.00



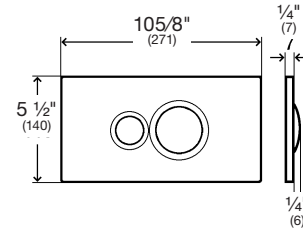
Cover plate
Plastic, alpine white
Actuator
Plastic, alpine white
Part No. 54710 \$127.00



Cover plate
Plastic, chrome-plated
Actuator
Plastic, chrome-plated
Part No. 54715 \$184.00



Cover plate
Plastic, jet black
Actuator
Plastic, jet black
Part No. 54635 \$157.00



VISIGN FOR STYLE 13



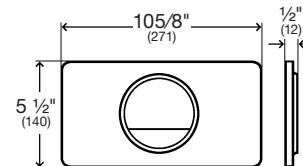
Cover plate
Plastic, matte chrome
Actuator
Plastic, matte chrome
Part No. 54605 \$187.00



Cover plate
Plastic, alpine white
Actuator
Plastic, alpine white
Part No. 54595 \$130.00



Cover plate
Plastic, chrome-plated
Actuator
Plastic, chrome-plated
Part No. 54600 \$187.00



VISIGN FOR STYLE 14



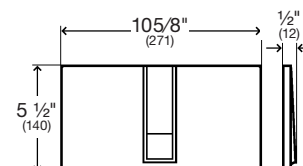
Cover plate
Plastic, matte chrome
Actuator
Plastic, matte chrome
Part No. 54620 \$187.00



Cover plate
Plastic, alpine white
Actuator
Plastic, alpine white
Part No. 54610 \$130.00



Cover plate
Plastic, chrome
Actuator
Plastic, chrome
Part No. 54615 \$187.00





Visign for Style 12

ELEGANCE YOU SEE AND FEEL

For a timeless look that's free of frills, consider Visign for Style 12. The flush plate is available in many different material combinations, giving you unlimited freedom for your bathroom design.



THE BENEFITS

- Can be mounted flush with the tile. For flush mounting the plate, order the frame number **54935** (frame needs to be installed before tile and drywall).
- Smooth-running dual flush technology thanks to bowden cable unit.

VISIGN FOR STYLE 12



Cover plate
Plastic, matte chrome
Actuator
Plastic, matte chrome
Part No. 54735 \$210.00



Cover plate
Plastic, alpine white
Actuator
Plastic, alpine white
Part No. 54725 \$147.00



Cover plate
Plastic, chrome-plated
Actuator
Plastic, chrome-plated
Part No. 54730 \$210.00



Cover plate
TSG, clear/light grey
Actuator
TSG, clear/light grey
Part No. 54570 \$609.00



Cover plate
Plastic, brushed nickel
Actuator
Plastic, brushed nickel
Part No. 54740 \$268.00



Cover plate
Stainless steel brushed
Actuator
stainless steel brushed
Part No. 54565 \$472.00



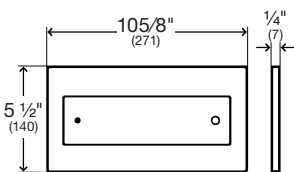
Cover plate
TSG, parsol/black
Actuator
Plastic, chrome-plated
Part No. 54645 \$509.00



Cover plate
TSG, clear/light grey
Actuator
Plastic, alpine white
Part No. 54640 \$366.00



Cover plate
TSG, parsol/black
Actuator
TSG, parsol/black
Part No. 54575 \$609.00



Custom plate
For flush mounting using your wall tile, stone or marble. Manual flush with dual flush technology
Part No. 54655 \$212.94

*TSG = Toughened Safety Glass



Flush mount frame
For use in combination with 10, 12, and 14 Visign for Style flush plates
Part No. 54935 \$129.25



reddot design award winner 2007

DESIGN PLUS

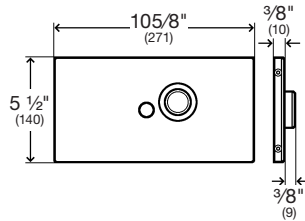
Viega Visign for Public

ATTRACTIVE AND DURABLE

Flush plates in the Visign for Public line are built for the most demanding conditions. Hygiene is made simple with touchless or remote activation.



VISIGN FOR PUBLIC



Touchless activation with manual override button. Contains activation cable, AC power unit and mounting hardware.

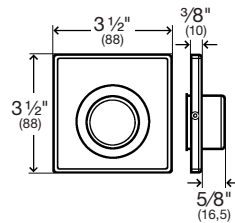
Flush plate
Cover plate

Stainless steel brushed

Actuator

Stainless steel polished

Part No. 54580 \$858.00



Includes 6' cable, cover tube, and mounting hardware.

Remote flush actuation

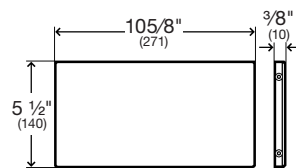
Cover plate

Stainless steel brushed

Actuator

Stainless steel polished

Part No. 54590 \$161.00



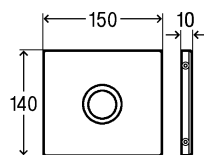
Cover plate for use with remote activation.

Flush plate

Cover plate

Stainless steel brushed

Part No. 54585 \$164.00



Touchless activation AC power unit and mounting hardware.

Flush plate

Cover plate

Stainless steel brushed

Part No. 54525 \$858.00



Visign for More

LUXURY FOR YOUR BATHROOM

Viega Visign for More is perfection in every aspect. From the stylish design to state-of-the-art technology to premium materials such as metal and glass, every Visign for More flush plate meets the highest demands in both appearance and operating comfort.

VISIGN FOR MORE 100



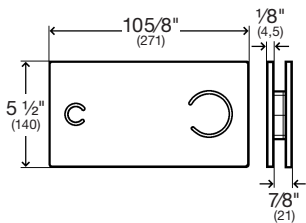
Cover plate
Metal, brushed nickel
Actuator
Metal, brushed nickel
Part No. 54755 \$684.00



Cover plate
Metal, chrome-plated
Actuator
Metal, chrome-plated
Part No. 54745 \$684.00



Cover plate
Metal, matte chrome
Actuator
Metal, matte chrome
Part No. 54750 \$684.00



Cover plate
Metal, chrome-plated
Actuator
TSG, clear/light grey
Part No. 54760 \$603.00



Cover plate
Metal, chrome-plated
Actuator
TSG, parsol/black
Part No. 54765 \$603.00



DESIGNPREIS
2009
NOMINIERT

DESIGN PLUS

VISIGN FOR MORE 104



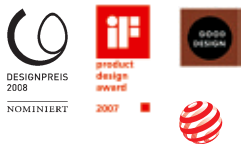
Cover plate
Metal, brushed nickel
Actuator
Metal, brushed nickel
Part No. 54780 \$684.00



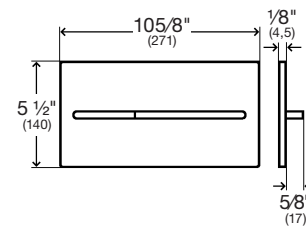
Cover plate
Chrome plated
Actuator
Chrome plated
Part No. 54770 \$684.00



Cover plate
Matte chrome
Actuator
Matte chrome
Part No. 54775 \$684.00



DESIGN PLUS reddot design award



VISIGN FOR MORE 105



Cover plate
TSG, white/traffic white
Actuator
TSG, white/traffic white
Part No. 54860 \$603.00



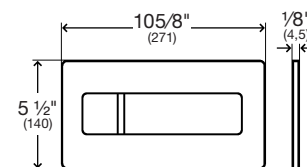
Cover plate
Metal, chrome-plated
Actuator
Metal, chrome-plated
Part No. 54875 \$684.00



Cover plate
Metal, matte chrome
Actuator
Metal, matte chrome
Part No. 54870 \$684.00



Cover plate
TSG, parsol/black
Actuator
TSG, parsol/black
Part No. 54865 \$603.00



DESIGN PLUS



Flush Mount installation frame
For Visign for More 100 and Visign for More 104
Part No. 54945 \$141.25



Visign for More sensitive TOUCHLESS

Experience the advantage of electronically-triggered flushing with Viega Visign for More sensitive, featuring hygienic, fingerprint-free surfaces that are perfectly smooth and easy-to-clean. To trigger full or reduced flushing, just pass your hand by the flush plate. The result is no-compromise comfort with the added benefit of significantly lower water consumption.

The Visign for More sensor flush plates are particularly unobtrusive. Touch-free activation means there are no raised buttons so the flush plate has an on-wall construction height of only 1/4". The glass material brings extra lightness and brilliance.

Visign for More 100 sensitive

The circular control fields are set off against the straight-lined contour of this flush plate. The accompanying urinal trigger via infrared technology also uses this lean design.



VISIGN FOR MORE 100 SENSITIVE



Cover plate

TSG, clear/light grey

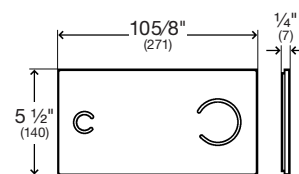
Part No. 54705 \$1.448.00
Part No. 54910 \$1.448.00



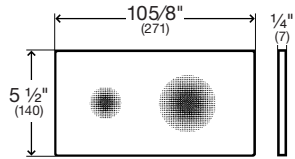
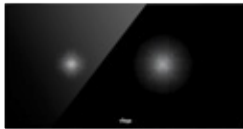
Cover plate

TSG, parsol/black

Part No. 54700 \$1.448.00
Part No. 54905 \$1.448.00



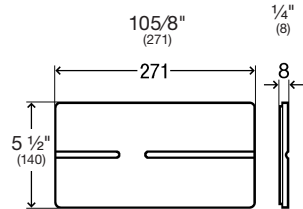
NEW:
VISIGN FOR STYLE SENSITIVE



DESIGN **PLUS**

Cover plate
Plastic, jet black
Actuator
Plastic, jet black
Part No. 54900 \$849.00

NEW:
VISIGN FOR MORE 105 SENSITIVE



DESIGN **PLUS**

Cover plate
Glass, white
Actuator
Glass, white
Part No. 54895 \$1049.00

VISIGN FOR MORE 100 INFRARED FOR URINALS



Cover plate
Metal, alpine white
Actuator
Metal, alpine white
Part No. 54915 \$858.00



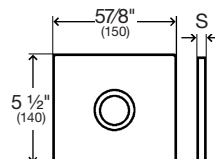
Cover plate
Metal, chrome-plated
Actuator
Metal, chrome-plated
Part No. 54920 \$858.00



Cover plate
TSG, clear/light grey
Actuator
TSG, clear/light grey
Part No. 54925 \$824.00



Cover plate
TSG, parsol/black
Actuator
TSG, parsol/black
Part No. 54930 \$824.00



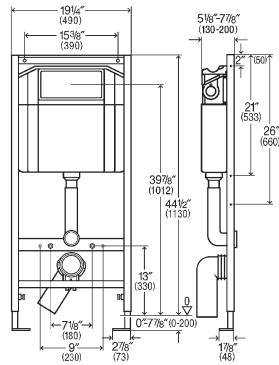
***TSG = Toughened Safety Glass**

Viega in-wall flushing carrier systems

ENGINEERED INSTALLATION FOR FLUSHING SYSTEM TECHNOLOGY

Viega's installation technology allows for a more creative bathroom design. Colors, tiles, fittings - when it comes to the visual design of a bathroom, it's all about individual taste. But for all that's hidden behind the wall, trust the expert know-how.





Viega Eco plus WC carrier 2 x 6

- For Visign flush plates, manual or touchless actuation
- Flush actuation from the front, dual flush technology, adjustable ceramic height, barrier-free

Components

Powder-coated steel frame, concealed cistern, 3" PP drain elbow, fernco coupling, mounting hardware for 2 x 6 wood or metal studs, bowl mounting kit, trim guards

Cistern Components

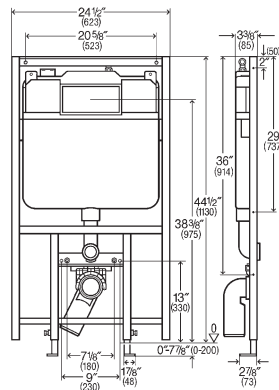
Pre-mounted 1/2 NPT angle stop, fill valve, flush valve

Technical Data

sm. flush vol. factory setting approx. 0.8 gallon
 sm. flush vol. setting approx. 0.8-1 gallon
 full flush vol. factory setting approx. 1.6 gallon

Article 52700

\$519.00



Viega Eco plus WC carrier 2 x 4

- For Visign flush plates, manual or touchless actuation
- Flush actuation from the front, dual flush technology, adjustable ceramic height, barrier-free

Components

Powder-coated steel frame, concealed cistern, 3" PP drain elbow, fernco coupling, mounting hardware for 2 x 4 wood or metal studs, bowl mounting kit, trim guards

Cistern Components

Pre-mounted 1/2 NPT angle stop, fill valve, flush valve

Technical Data

sm. flush vol. factory setting approx. 0.8 gallon
 sm. flush vol. setting approx. 0.8-1 gallon
 full flush vol. factory setting approx. 1.6 gallon

Article 52710

\$645.00



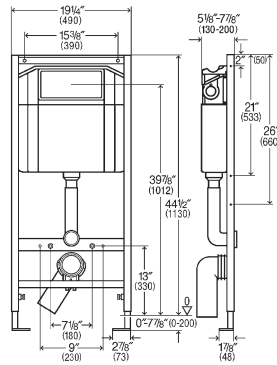
ADA Compliant

Viega in-wall ultra low flush carriers

ECO-FRIENDLY CARRIERS CONSUME LESS WATER

Save water and design space with Viega's ultra low flush carrier systems. The Eco Plus Reduced Flush Carriers exceed EPA Water Sense standards and provide at least six inches of additional design space in the bathroom.





Ultra Low Flush Viega Eco plus WC carrier 2 x 6

- For Visign flush plates, manual or touchless actuation
- Flush actuation from the front, dual flush technology, adjustable ceramic height, barrier-free

Components

Powder-coated steel frame, concealed cistern, 3 "PP drain elbow, remote coupling, mounting hardware for 2 x 4 or 2 x 6 wood or metal studs, bowl mounting kit, trim guards

Cistern Components

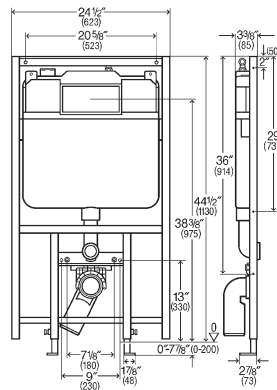
Pre-mounted angle stop with 1/2 NPT supply connection, fill valve set, flush valve kit

Technical Data

Partial flush volume factory setting approx. 0.7 gallon
 partial flush volume setting range approx. 0.7-0.9 gallon
 Full flush volume factory setting approx. 1.2 gallon

Article 52711

\$569.00



Ultra Low Flush Viega Eco plus WC carrier 2 x 4

- For Visign flush plates, manual or touchless actuation
- Flush actuation from the front, dual flush technology, adjustable ceramic height, barrier-free

Components

Powder-coated steel frame, concealed cistern, 3 "PP drain elbow, remote coupling, mounting hardware for 2 x 4 wood or metal studs, bowl mounting kit, trim guards

Cistern Components

Pre-mounted angle stop with 1/2 NPT supply connection, fill valve set, flush valve kit

Technical Data

Partial flush volume factory setting approx. 0.7 gallon
 partial flush volume setting range approx. 0.7-0.9 gallon
 Full flush volume factory setting approx. 1.2 gallon

Article 52712

\$695.00



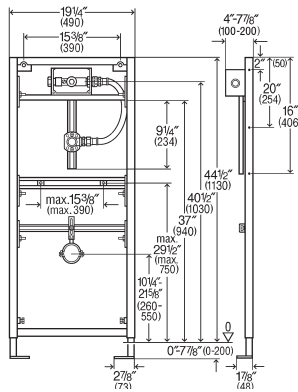
ADA Compliant

Viega Visign

URINAL FLUSH TECHNOLOGY

All flush plates from the Visign for More and Visign for Style series are also available for the urinal. A wide range of material combinations offers limitless design freedom for your washroom.





Viega Eco Plus Urinal carrier

- Urinal flushing system
- Installation set, sound protection:
- 1/2" NPT water inlet

Part No. 52750

\$599.00



Seal

For urinal connection at inlet side, rubber

Part No. 54680

\$3.30



Tile-level installation frame

For Visign for Style

Part No. 54940

\$192.94



VISIGN FOR STYLE 10



Cover plate

Plastic, alpine white

Actuator

Plastic, alpine white

Part No. 54845 \$349.00



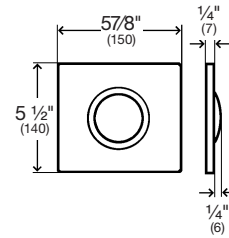
Cover plate

Plastic, chrome-plated

Actuator

Plastic, chrome-plated

Part No. 54850 \$370.00



VISIGN FOR STYLE 12



Cover plate

Plastic, alpine white

Actuator

Plastic, alpine white

Part No. 54785 \$543.00



Cover plate

Plastic, chrome-plated

Actuator

Plastic, chrome-plated

Part No. 54790 \$751.00



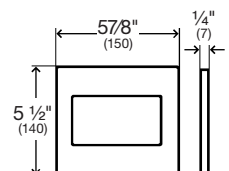
Cover plate

Plastic, matte chrome

Actuator

Plastic, matte chrome

Part No. 54795 \$751.00



VISIGN FOR MORE 100



Cover plate
Metal, chrome-plated
Actuator
Metal, chrome-plated
Part No. 54800 \$751.00



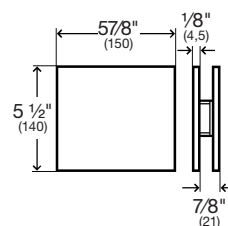
Cover plate
Metal, matte chrome
Actuator
Metal, matte chrome
Part No. 54805 \$751.00



Cover plate
Metal, chrome-plated
Actuator
TSG, clear/light grey
Part No. 54810 \$632.00



Cover plate Metal, chrome-plated
Actuator TSG, parsol/black
Part No. 54815 \$632.00



VISIGN FOR MORE 100 INFRARED FOR URINALS



Cover plate
Metal, alpine white
Actuator
Metal, alpine white
Part No. 54915 \$858.00



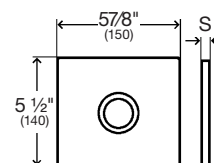
Cover plate
Metal, chrome-plated
Actuator
Metal, chrome-plated
Part No. 54920 \$858.00



Cover plate
TSG, clear/light grey
Actuator
TSG, clear/light grey
Part No. 54925 \$824.00



Cover plate
TSG, parsol/black
Actuator
TSG, parsol/black
Part No. 54930 \$824.00

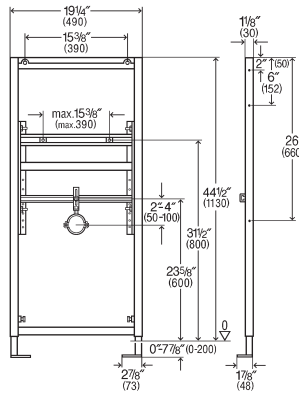


***TSG = Toughened Safety Glass**

Sink and bidet carriers

ATTRACTIVE WASHBASIN AND BIDET CARRIERS TO COMPLETE YOUR HIGH-END BATHROOM



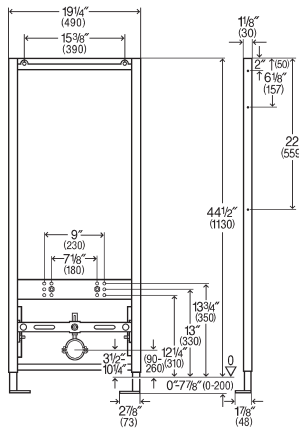


Viega Eco Plus washbasin element

- For WB with single-hole fittings
- Frame made of powder-coated steel, fixing material height-adjustable with sound protection for Viega wall plates, fixing material for element (for floor) and ceramic, screws (self drilling) for mounting to metal or wood studs.

Part No. 52730

\$256.00



Viega Eco Plus bidet carrier

- For wall-mounted bidet
- Components**
 Powder-coated steel frame, height adjustable drain, mounting hardware for wood or metal studs, adjustable bowl height and bowl mounting hardware

Part No. 52740

\$449.00

Viega spare parts

ADDITIONAL PRODUCTS TO ACHIEVE THE BEST FIT IN ANY BATHROOM



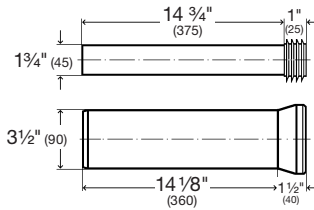


Fixing set

- For fixing Viega Eco Plus / Viega Eco elements in single mounting directly at the installation body, corner mounting at solid or metal support profile

Part No. 54685

\$34.00

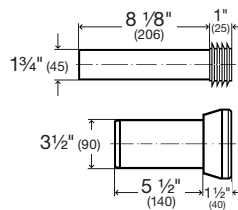


Bowl connection extension kit

- Flushing pipe with flushing pipe connector 1 3/4" x 15 3/4", WC connection pipe with lip seal, mounting set (covering accessories white)
- Plastic

Part No. 54530

\$83.45



Bowl connection kit

- Flushing pipe with flushing pipe connector 1 3/4" x 9", WC connection socket with lip seal, mounting set (covering accessories white)

Part No. 54695

\$42.00



Actuating rod set

- Spare part for flush plate Standard 1 model model 8326.1, flush plate Visign for Style 10 model 8315.1, flush plate Visign for Style 13 model 8333.1, flush plate Visign for Style 14 model 8334.1

Part No. 54830

\$2.50



Bowl mounting Hardware

- Threaded bolts M 1/2" x 4 3/4", threaded nuts M 1/2", collar screws with dowels, drilling screw

Part No. 54855

\$14.00



Threaded bolt set

- For concealed cistern 2H, concealed cistern 2L, concealed cistern 2C, concealed cistern Standard 2S
- Plastic

Part No. 54650

\$3.00

**Protective plug drain elbow**

- For drain elbow DN90
- Plastic

Part No. 54690

\$4.00

**Protective plug flushing elbow**

- For flushing pipe elbow
- Plastic

Part No. 54840

\$6.00

**Complete sealing set**

- O-ring set for drain socket of concealed cisterns 1H, 2H, 1C, 2C, 1S and 2S, o-ring for corner valve, seals for drain valve, drain valve seat, filling valve and flushing pipe elbow

Part No. 54820

\$6.00

**Sealing set flush valve only**

- Rubber

Components

Drain valve seal, valve seat seal

Part No. 54625

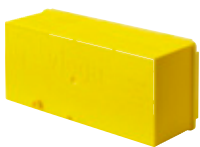
\$8.00

**Corner valve**

- For 2X6 or 2X4 toilet carriers

Part No. 54825

\$17.00

**Protective cover**

- For concealed cistern 1H, concealed cistern 1L, concealed cistern 1C, concealed cistern 2H, concealed cistern 2L, concealed cistern 2C, concealed cistern Standard 1S, concealed cistern Standard 2S

- Plastic

Components

Protective cover

Part No. 54835

\$16.00

**2x4 Flush valve**

- For 2X4 carrier
- Plastic

Part No. 54630

\$42.00

**2 x 6 Flush valve kit**

- For 2X6 carrier
- Plastic
- Flush actuation from front, dual flush technology

Components

Drain valve set, drain valve seat, actuating mechanism, actuating rod set, threaded bolt set, bow

Part No. 54890

\$59.00

**2 x 6 Fill valve kit**

- For concealed cistern 2H, concealed cistern Standard 2S
- Plastic

Components

Filling valve, flexible hose, filling valve holder

Part No. 54555

\$39.00

**2 x 4 Fill valve kit**

- For concealed cistern
- Plastic

Components

Filling valve, Flexible hose, Filling valve holder

Part No. 54560 \$36.00

**Battery compartment**

- Spare part for flush plate sensitive Visign for More 100 model 8352.12, flush plate sensitive Visign for More 105 model 8357.11
- Suitable for flush plate Visign for Public 5 model 8326.16, flush plate Visign for Public 6 model 8326.15, WC flush actuation model 8350.31, 8350.32, 8350.33, 8350.34
- Plastic

Components

4 Mignon AA batteries

Part No. 54880 \$131.00

**Power pack AC**

- Spare part for flush plate Visign for Public 5 model 8326.16, flush plate Visign for Public 6 model 8326.15, flush plate sensitive Visign for Care model 8352.21, flush plate sensitive Visign for More 100 model 8352.11, flush plate sensitive Visign for More 105 model 8357.11, urinal conversion kit model 8121.020, WC flush actuation model 8350.31, 8350.32, 8350.33, 8350.34

Technical data

Power supply voltage 100–240 V AC/50–60 Hz

Part No. 54885 \$110.00

**Cast Iron Elbow**

- For toilet
- Cast Iron

Components

Lip seal

Article 52765 \$96.00

**90° elbow Urinal**

- PE
- EPDM sealing elements

Part No. 54537

\$24.00

**90° connection elbow Toilet**

- PE
- EPDM sealing element

Part No. 54536

\$25.00

**Connection piece Toilet**

- PVC
- EPDM sealing element

Part No. 54539

\$55.00

**Connection piece Toilet**

- PE
- EPDM sealing element

Part No. 54891

\$35.00

**Suction moulded piece Urinal**

- PE
- EPDM sealing element

Part No. 54538

\$34.00



This document is subject to updates. For the most current Viega literature please visit www.viega.us

The term Viega does not apply to a specific company within the various separate and distinct companies comprising the Viega group of companies. The term Viega as used in this publication refers to the Viega brand itself or generally to the Viega group of companies. References to activities in North America specifically refer to activities of Viega LLC. A green dot on a Viega ProPress, MegaPress fitting indicates Smart Connect technology with an EPDM sealing element. A yellow dot on a Viega MegaPressG fitting indicates Smart Connect technology with an HNBR sealing element. A white dot on a Viega ProPress or MegaPress fitting indicates Smart Connect technology with an FKM sealing element. For a current list of applications, please visit www.viega.us/applications.

Zero Lead identifies Viega products meeting the lead-free requirements of NSF 61 through testing under NSF/ANSI 372 (0.25% or less maximum weighted average lead content).
©2020. Viega®, ProPress®, MegaPress®, SeaPress®, Smart Connect®, ManaBloc®, GeoFusion®, FostaPEX®, Radiant Wizard®, Climate Mat®, Climate Panel®, Climate Trak®, PureFlow®, Visign®, Visign for Style®, Visign for More®, Visign for Care® and Visign for Public® are registered trademarks of Viega GmbH & Co. KG. SmartLoop®, Viega Eco Plus® and Viega: Connected in quality® are registered trademarks of Viega Holding GmbH & Co. KG. Eco Brass® is a registered trademark of Mitsubishi Shindoh Co., LTD. RIDGID® is a registered trademark of RIDGID, Inc.

Eco Brass® is a registered trademark of Mitsubishi Shindoh Co., LTD.

 **Viega LLC**

phone: (800) 976-9819
e-mail: customerservice@viega.us
web: www.viega.us

