

PRESRV™ CORE PRO DESIGNER

# ZEPHYR



Price Guide

Effective  
April 1, 2020

**ALMO**<sup>®</sup>  
Premium Appliances  
Distribution on a *Personal Level*

**WHY BUY ZEPHYR VENTILATION?**

**OVERVIEW**

1. Leader in Technology and Innovation
2. Highest Quality
3. Quietest Ventilation in the Industry
4. Duct Cover Extension Option up to 12' Ceilings
5. Quick-Lock Installation System for Island models – the easiest in the industry
6. Versatile Outdoor Options

**1. TECHNOLOGY AND INNOVATION**

**PowerWave™ Blower Technology:**

Designed to deliver best-in-class performance with unparalleled quiet operation, inspired by three-phase AC power. This system allows for a dual internal blower to achieve 1,300 CFM.

**DCBL™:**

The DCBL Suppression System® utilizes a BLDC motor to deliver energy efficient power and performance. The system is virtually silent and uses less energy at a powerful 715 CFM.

**Bloom™ HD/GU10 LED Light Bulbs:**

25,000 hour lifetime; first dimmable LED; natural 3,000k color output; integrated throughout more of our products.

**Airflow Control Technology™:**

Allows for restricted CFM levels based on Make-Up Air requirements.

**ADA Compliant – RF Wireless Remote Control**

**2. HIGH QUALITY**

Zephyr uses high quality components throughout for reliable long life operation, with stainless steel that is welded and polished so there are no sharp edges or seams.

**3. QUIETEST VENTILATION IN THE INDUSTRY**

Zephyr ventilation products can get as low as 0.5 sones—that's the same level of sound as a soft whisper. Or as low as 1 sone—the same as a refrigerator hum.

**4. DUCT COVER EXTENSION OPTION UP TO 12 FEET**

All chimney wall and island range hoods can reach ceiling heights of up to 12' with the optional Duct Cover Extension. Standard height of 10'.

**5. QUICK-LOCK INSTALLATION SYSTEM**

Install an island range hood in 3 easy steps—what used to take 3+ people, now only takes 2! It's the easiest island range hood installation system in the industry.

**6. VERSATILE OUTDOOR OPTIONS**

From inserts to wall models, Zephyr outdoor ventilation systems all share the same great features: 304 stainless steel; pro baffle filters; powerful blowers up to 1,200 CFM; large depth and range of widths to cover even the largest of grills. Optional LED lighting available on all models.

**WHY BUY ZEPHYR PRESRV™ WINE & BEVERAGE COOLERS?**

**OVERVIEW**

1. Quiet Operation and Vibration Dampening System
2. Full-Extension Black Wood Racks
3. 3-Color LED Lighting
4. Active Cooling Technology – Convection Cool
5. High Quality
6. Field-Reversible Door
7. ENERGY STAR® Rated

**1. ULTRA QUIET OPERATION AND VIBRATION DAMPENING SYSTEM**

An isolated compressor, smooth running fan motors, heavy-duty cabinet and high-quality components help reduce noise and vibration to minimize wine disturbance. The high-quality compressor is designed for long life and quiet operation. With a dBA rating as low as 38, Presrv™ wine & beverage coolers operate quieter than the sound of a babbling brook.

**2. FULL-EXTENSION BLACK WOOD RACKS**

The full-extension racks allow you to pull the rack out completely to see the bottles in the back. Rack configuration allow for large format bottles. Minimize vibration and movement with the smooth glides. No untreated wood to stain or absorb moisture and smell.

**3. 3-COLOR LED LIGHTING**

Available in our signature colors—Cloud White, Deep Blue and Amber—to set the mood.

**4. ACTIVE COOLING TECHNOLOGY - CONVECTION COOL**

An on-board computer controls active cooling fans to provide temperature stability and even cooling. If the humidity is high, the evaporator collects excess moisture onto the coils. If the humidity drops, that moisture will evaporate back into the air to maintain steady levels of humidity.

**5. HIGH QUALITY**

Constructed of quality components and 304-grade stainless steel that is durable with welded and polished corners.

**6. FIELD-REVERSIBLE DOOR**

No need to purchase a separate kit to be able to easily flip the door to fit your spaces design. Includes one door bracket for even a last minute switch, no need to panic. Available on all single-door models.

**7. ENERGY STAR® RATED**

Select Beverage Coolers are ENERGY STAR® rated. Single Zone - PRB24C01BG and Single Zone Outdoor - PRB24C01AS-OD

PRODUCT INDEX

COLLECTIONS	MODEL + INSTALL TYPE	PAGE
PRESRV™ Wine & Beverage Coolers	<b>WINE &amp; BEVERAGE COOLERS</b>	
CORE	<b>PRESRV™</b>	
PRO	Beverage Coolers	1 - 2
DESIGNER	Wine Coolers	3 - 4
	French Door Coolers	5
	Full Size Coolers	6
	<b>VENTILATION</b>	
	<b>DOWNDRAFT</b>	
	Lift (DLI)	29
	Sorrento (DD1)	29
	<b>INSERT</b>	
	Monsoon (AK94) DCBL	33
	Monsoon I (AK92)	33
	Monsoon II (AK93)	33
	Monsoon Mini (AK91)	32
	Spruce (AK98) OUTDOOR	34
	Tornado I (AK81)	31
	Tornado II (AK82)	31
	Tornado III (AK83)	31
	Tornado Mini (AK84)	30
	Twister (AK80)	30
	Twister ES (AK80) ENERGY STAR	30
	Vortex (AK90)	32
	Vortex ES (AK90) ENERGY STAR	32
	Willow (AK88) OUTDOOR	34
	<b>ISLAND</b>	
	Anzio (ZAZ)	23
	Duo (ADL)	25
	Layers (ALL)	26
	Lucé (ZLC)	24
	Lux (ALU)	28
	Milano (ZML) DCBL	24
	Modena (ZMD) DCBL	24
	Napoli (ZNA) DCBL	25
	Ravenna (ZRE) BLACK SS	23
	Roma (ZRM)	23
	Siena Pro (ZSL)	26
	Titan (AK77) POWERWAVE™	27
	Trapeze (CTP)	27
	Verona (ZVN) DCBL	25

MODEL + INSTALL TYPE	PAGE
<b>VENTILATION cont.</b>	
<b>UNDER-CABINET</b>	
Breeze I (AK11)	7
Breeze II (AK12) BLACK SS	7
Cyclone (AK65) BLACK SS	8
Genova (ZGE)	10
Gust (AK71)	11
Hurricane (AK25)	8
Pisa (ZPI)	10
Pyramid (ZPY)	9
Tamburo (ZTA)	9
Tempest I (AK70)	11
Typhoon (AK21)	8
<b>WALL</b>	
Anzio (ZAN) BLACK SS	15
Cypress (AK78) OUTDOOR	34
Duo (ADU)	20
Incline (AIN)	22
Layers (ALA)	20
Lucé (ZLU)	18
Milano (ZMI) DCBL	19
Modena (ZMO) DCBL	18
Okeanito (COK)	21
Ombra (ZOM) BLACK SS	14
Ravenna (ZRV) BLACK SS	15
Roma (ZRO)	16
Roma Groove (ZRG)	16
Roma Pro (ZRP) POWERWAVE™	13
Savona (ZSA) BLACK SS	14
Siena (ZSI)	17
Siena ES (ZSI) ENERGY STAR	17
Siena Pro (ZSP)	17
Tempest II (AK75)	12
Titan (AK76) POWERWAVE™	13
Venezia (ZVE) DCBL	18
Verona (ZVO) DCBL	19
Wave (AWA)	22
<b>MISCELLANEOUS</b>	
Accessories	35
Displays	36-39

Effective January, 2020

# ZEPHYR

PRESRV™  
BEVERAGE COOLERS



MODEL	FINISH	SIZE W x H x D	MAP	MSRP
<b>SINGLE ZONE BEVERAGE COOLER</b>				
PRB15C01AG	SS + Glass	15" x 34-3/16" x 23-5/8"*	\$ 1,049	\$ 1,149

- |  |  |   |
|--|--|---|
| <ul style="list-style-type: none"> <li>•34° - 50° F</li> <li>•39 dBA</li> <li>•Capacitive touch controls</li> <li>•Field-reversible door</li> <li>•3-color LED lighting</li> </ul> | <ul style="list-style-type: none"> <li>•4 bottle/62 12oz can capacity or</li> <li>•7 bottle/48 12oz can capacity</li> <li>•1 full-extension wood rack</li> <li>•2 adjustable glass shelves</li> <li>•Sabbath mode</li> </ul> | <ul style="list-style-type: none"> <li>•Built-in or freestanding</li> <li>•PreciseTemp™</li> <li>•Active cooling technology</li> <li>•Vibration dampening system</li> <li>•304-grade stainless steel</li> </ul> |
|--|--|---|

Parts & Accessories		
ZOF-C004	Replacement Carbon Filter	\$ 11.99
PRHAN-C001	Pro Handle Kit (1 per kit)	\$ 49.99

\*Depth of cabinet with door, not including handle



<b>SINGLE ZONE BEVERAGE COOLER</b>				
PRB24C01BG	SS + Glass	24" x 33-7/8" x 23-5/8"*	\$ 1,199	\$ 1,299

- |   |  |  |
|---|--|--|
| <ul style="list-style-type: none"> <li>•34° - 50° F</li> <li>•39 dBA</li> <li>•Capacitive touch controls</li> <li>•Field-reversible door</li> <li>•3-color LED lighting</li> <li>•Sabbath mode</li> </ul> | <ul style="list-style-type: none"> <li>•7 bottle/112 12oz can capacity or</li> <li>•13 bottle/84 12oz can capacity</li> <li>•1 full-extension wood rack</li> <li>•2 adjustable glass shelves</li> <li>•Large diameter bottle rack</li> <li>•304-grade stainless steel</li> </ul> | <ul style="list-style-type: none"> <li>•Built-in or freestanding</li> <li>•PreciseTemp™</li> <li>•Active cooling technology</li> <li>•Vibration dampening system</li> <li>•ENERGY STAR® rated</li> </ul> |
|---|--|--|

Parts & Accessories		
ZOF-C004	Replacement Carbon Filter	\$ 11.99
PRHAN-C001	Pro Handle Kit (1 per kit)	\$ 49.99

\*Depth of cabinet with door, not including handle

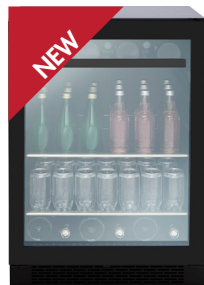


<b>SINGLE ZONE BEVERAGE COOLER - BLACK STAINLESS STEEL</b>				
PRB24C01ABSG	BLK SS + Glass	23-7/8" x 34" x 23-7/8"*	\$ 1,299	\$ 1,399

- |   |  |   |
|---|--|---|
| <ul style="list-style-type: none"> <li>•34° - 50° F</li> <li>•39 dBA</li> <li>•Capacitive touch controls</li> <li>•Field-reversible door</li> <li>•3-color LED lighting</li> <li>•Titanium coated finish</li> </ul> | <ul style="list-style-type: none"> <li>•7 bottle/127 12oz can capacity or</li> <li>•13 bottle/98 12oz can capacity</li> <li>•1 full-extension wood rack</li> <li>•2 adjustable glass shelves</li> <li>•Sabbath mode</li> </ul> | <ul style="list-style-type: none"> <li>•Built-in or freestanding</li> <li>•PreciseTemp™</li> <li>•Active cooling technology</li> <li>•Vibration dampening system</li> <li>•304-grade black stainless steel</li> </ul> |
|---|--|---|

Parts & Accessories		
ZOF-C007	Replacement Carbon Filter	\$ 11.99

\*Depth of cabinet with door, not including handle



Shown without wood panel

<b>SINGLE ZONE BEVERAGE COOLER - PANEL-READY</b>				
PRB24C01BPG	PR + Glass	24" x 33-7/8" x 22-7/8"*	\$ 1,099	\$ 1,199

- |   |   |  |
|---|---|--|
| <ul style="list-style-type: none"> <li>•34° - 50° F</li> <li>•39 dBA</li> <li>•Capacitive touch controls</li> <li>•Field-reversible door</li> <li>•3-color LED lighting</li> <li>•Large diameter bottle rack</li> </ul> | <ul style="list-style-type: none"> <li>•7 bottle/112 12oz can capacity or</li> <li>•13 bottle/84 12oz can capacity</li> <li>•1 full-extension wood rack</li> <li>•2 adjustable glass shelves</li> <li>•Zero clearance door hinge</li> </ul> | <ul style="list-style-type: none"> <li>•Built-in or freestanding</li> <li>•PreciseTemp™</li> <li>•Active cooling technology</li> <li>•Vibration dampening system</li> <li>•Sabbath mode</li> </ul> |
|---|---|--|

Parts & Accessories		
ZOF-C004	Replacement Carbon Filter	\$ 11.99
PRHAN-C101	Contemporary Handle (1 per kit)	\$ 39.99
PRHAN-C001	Pro Handle Kit (1 per kit)	\$ 49.99

\*Depth of cabinet without panel, not including handle (compatible with 5/8" and 3/4" panel thickness)

Door Finish: 304-grade Stainless Steel + Glass, 304-grade Black Stainless Steel + Glass, Panel-Ready + Glass. Cabinet Finish: Black. Interior Finish: Black  
Warranty: 2 years non-consumable parts, 5 years compressor, 1 year labor

All prices, models, and specifications are subject to change without notice.  
Please call to verify pricing and availability.  
DEC19.0101

Effective January, 2020

# ZEPHYR

PRESRV™ OUTDOOR  
BEVERAGE COOLER



MODEL	FINISH	SIZE W x H x D	MAP	MSRP
<b>SINGLE ZONE BEVERAGE COOLER - OUTDOOR</b>				
PRB24C01AS-OD	SS	24" x 33-7/8" x 23-7/8"*	\$ 1,199	\$ 1,299
<ul style="list-style-type: none"> <li>•34° - 50° F</li> <li>•39 dBA</li> <li>•Capacitive touch controls</li> <li>•Field-reversible door</li> <li>•White LED lighting</li> <li>•ENERGY STAR® rated</li> </ul>		<ul style="list-style-type: none"> <li>•5.6 cu/ft capacity</li> <li>•1 full-extension wire shelf</li> <li>•2 adjustable glass shelves</li> <li>•304-grade stainless steel</li> <li>•Sabbath mode</li> <li>•Optional casters</li> </ul>	<ul style="list-style-type: none"> <li>•Built-in or freestanding</li> <li>•PreciseTemp™</li> <li>•Active cooling technology</li> <li>•Vibration dampening system</li> <li>•Door lock</li> </ul>	
<b>Parts &amp; Accessories</b>				
ZOF-C004	Replacement Carbon Filter			\$ 11.99
PRCAST-C001	Casters (set of 4)			\$ 24.99

\*Depth of cabinet with door, not including handle

### Parts & Accessories



ZOF-C004 & ZOF-C007: replacement carbon filter

Door Finish: 304-grade Stainless Steel. Cabinet Finish: 304-grade Stainless Steel. Interior Finish: Black  
Warranty: 2 years non-consumable parts, 5 years compressor, 1 year labor

All prices, models, and specifications are subject to change without notice.  
Please call to verify pricing and availability.  
DEC19.0101

Effective January, 2020

PRESRV™ SINGLE ZONE  
WINE COOLERS



MODEL	FINISH	SIZE W x H x D	MAP	MSRP
<b>SINGLE ZONE WINE COOLER</b>				
PRW15C01AG	SS + Glass	15" x 34-3/16" x 23-5/8"*	\$ 1,149	\$ 1,249
<ul style="list-style-type: none"> <li>•40° - 65° F</li> <li>•39 dBA</li> <li>•Capacitive touch controls</li> <li>•Field-reversible door</li> <li>•304-grade stainless steel</li> </ul>	<ul style="list-style-type: none"> <li>•28 bottle capacity</li> <li>•6 full-extension wood racks</li> <li>•Built-in or freestanding</li> <li>•3-color LED lighting</li> </ul>	<ul style="list-style-type: none"> <li>•PreciseTemp™</li> <li>•Active cooling technology</li> <li>•Vibration dampening system</li> <li>•Sabbath mode</li> </ul>		
<b>Parts &amp; Accessories</b>				
ZOF-C004	Replacement Carbon Filter			\$ 11.99
PRHAN-C001	Pro Handle Kit (1 per kit)			\$ 49.99

\*Depth of cabinet with door, not including handle





MODEL	FINISH	SIZE W x H x D	MAP	MSRP
<b>SINGLE ZONE WINE COOLER</b>				
PRW24C01BG	SS + Glass	24" x 33-7/8" x 23-5/8"*	\$ 1,299	\$ 1,399
<ul style="list-style-type: none"> <li>•40° - 65° F</li> <li>•39 dBA</li> <li>•Capacitive touch controls</li> <li>•Vibration dampening system</li> <li>•Sabbath mode</li> </ul>	<ul style="list-style-type: none"> <li>•53 bottle capacity</li> <li>•6 full-extension wood racks</li> <li>•Large diameter bottle rack</li> <li>•Field-reversible door</li> <li>•304-grade stainless steel</li> </ul>	<ul style="list-style-type: none"> <li>•PreciseTemp™</li> <li>•Active cooling technology</li> <li>•Built-in or freestanding</li> <li>•3-color LED lighting</li> </ul>		
<b>Parts &amp; Accessories</b>				
ZOF-C004	Replacement Carbon Filter			\$ 11.99
PRHAN-C001	Pro Handle Kit (1 per kit)			\$ 49.99

\*Depth of cabinet with door, not including handle


## Shared Features


**34°** **PreciseTemp™**  
Multiple internal sensors help maintain accurate temperatures.

 **Active Cooling Technology**  
An on-board computer controls an active cooling fan to provide temperature stability and even cooling.

 **Dual-Pane, Low-e, Argon-Filled Glass**  
Improves insulation to minimize heat exchange and increases soundproofing characteristics.

 **3-Color LED Lighting**  
LED lighting in Cloud White, Deep Blue and Amber.

 **Vibration Dampening System**  
Noise and vibration is reduced to minimize wine disturbance.

 **Zephyr Warranty**  
We back our products with a generous 2 year parts and 1 year labor warranty along with a 5 year warranty on the compressor.

Door Finish: 304-grade Stainless Steel + Glass. Cabinet Finish: Black. Interior Finish: Black  
Warranty: 2 years non-consumable parts, 5 years compressor, 1 year labor

All prices, models, and specifications are subject to change without notice.  
Please call to verify pricing and availability.  
DEC19.0101

Effective January, 2020

# ZEPHYR

PRESRV™ DUAL ZONE  
WINE COOLERS



MODEL	FINISH	SIZE W x H x D	MAP	MSRP
<b>DUAL ZONE WINE COOLER</b>				
PRW24C02BG	SS + Glass	24" x 33-7/8" x 23-5/8"*	\$ 1,399	\$ 1,499
<ul style="list-style-type: none"> <li>•40° - 65° F (each zone)</li> <li>•39 dBA</li> <li>•Capacitive touch controls</li> <li>•Vibration dampening system</li> <li>•Sabbath mode</li> </ul>	<ul style="list-style-type: none"> <li>•45 bottle capacity</li> <li>•5 full-extension wood racks</li> <li>•Large diameter bottle rack</li> <li>•Field-reversible door</li> <li>•304-grade stainless steel</li> </ul>	<ul style="list-style-type: none"> <li>•PreciseTemp™</li> <li>•Active cooling technology</li> <li>•Built-in or freestanding</li> <li>•3-color LED lighting</li> </ul>		
<b>Parts &amp; Accessories</b>				
ZOF-C004	Replacement Carbon Filter			\$ 11.99
PRHAN-C001	Pro Handle Kit (1 per kit)			\$ 49.99

\*Depth of cabinet with door, not including handle



<b>DUAL ZONE WINE COOLER - BLACK STAINLESS STEEL</b>				
PRW24C02ABSG	BLK SS + Glass	23-7/8" x 34" x 23-7/8"*	\$ 1,499	\$ 1,599
<ul style="list-style-type: none"> <li>•39° - 64° F</li> <li>•39 dBA</li> <li>•Capacitive touch controls</li> <li>•Built-in or freestanding</li> <li>•Field-reversible door</li> </ul>	<ul style="list-style-type: none"> <li>•44 bottle capacity</li> <li>•5 full-extension wood racks</li> <li>•Large diameter bottle rack</li> <li>•3-color LED lighting</li> <li>•304-grade black stainless steel</li> </ul>	<ul style="list-style-type: none"> <li>•PreciseTemp™</li> <li>•Active cooling technology</li> <li>•Vibration dampening system</li> <li>•Sabbath mode</li> <li>•Titanium coated finish</li> </ul>		
<b>Parts &amp; Accessories</b>				
ZOF-C007	Replacement Carbon Filter			\$ 11.99

\*Depth of cabinet with door, not including handle



Shown without  
wood panel

<b>DUAL ZONE WINE COOLER - PANEL-READY</b>				
PRW24C02BPG	PR + Glass	24" x 33-7/8" x 22-7/8"*	\$ 1,299	\$ 1,399
<ul style="list-style-type: none"> <li>•40° - 65° F (each zone)</li> <li>•39 dBA</li> <li>•Capacitive touch controls</li> <li>•Built-in or freestanding</li> <li>•Field-reversible door</li> </ul>	<ul style="list-style-type: none"> <li>•45 bottle capacity</li> <li>•5 full-extension wood racks</li> <li>•Large diameter bottle rack</li> <li>•3-color LED lighting</li> <li>•Zero clearance door hinge</li> </ul>	<ul style="list-style-type: none"> <li>•PreciseTemp™</li> <li>•Active cooling technology</li> <li>•Vibration dampening system</li> <li>•Sabbath mode</li> </ul>		
<b>Parts &amp; Accessories</b>				
ZOF-C004	Replacement Carbon Filter			\$ 11.99
PRHAN-C101	Contemporary Handle (1 per kit)			\$ 39.99
PRHAN-C001	Pro Handle Kit (1 per kit)			\$ 49.99

\*Depth of cabinet without panel, not including handle (compatible with 5/8" and 3/4" panel thickness)

Door Finish: 304-grade Stainless Steel + Glass, 304-grade Black Stainless Steel + Glass, Panel-Ready + Glass. Cabinet Finish: Black. Interior Finish: Black  
Warranty: 2 years non-consumable parts, 5 years compressor, 1 year labor

All prices, models, and specifications are subject to change without notice.  
Please call to verify pricing and availability.  
DEC19.0101

Effective January, 2020

# ZEPHYR

PRESRV™ FRENCH  
DOOR COOLERS



MODEL	FINISH	SIZE W x H x D	MAP	MSRP
<b>DUAL ZONE FRENCH DOOR WINE &amp; BEVERAGE COOLER</b>				
PRWB24C32BG	SS + Glass	24" x 33-7/8" x 23-3/8"	\$ 1,499	\$ 1,599

- |  |   |   |
|--|---|---|
| <ul style="list-style-type: none"> <li>•38° - 65° F (wine side)</li> <li>•34° - 65° F (beverage side)</li> <li>•38 dBA</li> <li>•Capacitive touch controls</li> <li>•Built-in or freestanding</li> </ul> | <ul style="list-style-type: none"> <li>•21 bottle/64 12oz can capacity</li> <li>•6 full-extension wood racks</li> <li>•3 adjustable glass shelves</li> <li>•3-color LED lighting</li> <li>•Zero clearance door hinge</li> </ul> | <ul style="list-style-type: none"> <li>•PreciseTemp™</li> <li>•Active cooling technology</li> <li>•Vibration dampening system</li> <li>•Sabbath mode</li> <li>•304-grade stainless steel</li> </ul> |
|--|---|---|

Parts & Accessories		
ZOF-C004	Replacement Carbon Filter	\$ 11.99
PRHAN-C002	Pro Handle Kit (2 per kit)	\$ 89.99

\*Depth of cabinet with door, not including handle



MODEL	FINISH	SIZE W x H x D	MAP	MSRP
<b>DUAL ZONE FRENCH DOOR WINE COOLER</b>				
PRW24C32BG	SS + Glass	24" x 33-7/8" x 23-3/8"	\$ 1,499	\$ 1,599

- |  |   |   |
|--|---|---|
| <ul style="list-style-type: none"> <li>•38° - 65° F (each zone)</li> <li>•38 dBA</li> <li>•Capacitive touch controls</li> <li>•Built-in or freestanding</li> <li>•304-grade stainless steel</li> </ul> | <ul style="list-style-type: none"> <li>•21 bottle capacity (each side)</li> <li>•12 full-extension wood racks</li> <li>•3-color LED lighting</li> <li>•Zero clearance door hinge</li> </ul> | <ul style="list-style-type: none"> <li>•PreciseTemp™</li> <li>•Active cooling technology</li> <li>•Vibration dampening system</li> <li>•Sabbath mode</li> </ul> |
|--|---|---|

Parts & Accessories		
ZOF-C004	Replacement Carbon Filter	\$ 11.99
PRHAN-C002	Pro Handle Kit (2 per kit)	\$ 89.99

\*Depth of cabinet with door, not including handle

### Parts & Accessories



PPHAN-C101: contemporary handle kit



PPHAN-C001: pro handle kit



PPHAN-C002: pro handle kit (french door)

Door Finish: 304-grade Stainless Steel + Glass. Cabinet Finish: Black. Interior Finish: Black  
Warranty: 2 years non-consumable parts, 5 years compressor, 1 year labor

All prices, models, and specifications are subject to change without notice.  
Please call to verify pricing and availability.  
DEC19.0101

Effective January, 2020

# ZEPHYR

PRESRV™ FULL SIZE  
WINE COOLERS



MODEL	FINISH	SIZE W x H x D	MAP	MSRP
<b>SINGLE ZONE FULL SIZE WINE COOLER</b>				
PRW24F01BG	SS + Glass	24" x 69-1/2" x 27-1/2"*	\$ 2,199	\$ 2,299

- 40° - 65° F
- 40 dBA
- PreciseTemp™
- 3-color LED lighting
- Field-reversible door
- 304-grade stainless steel
- 148 bottle capacity
- 132 bottle capacity (with display rack)
- Active cooling technology
- Built-in or freestanding
- Vibration dampening system
- 13 full-extension wood racks
- 1, half capacity wood rack
- 1, 5 bottle display rack
- Zero clearance door hinge
- Sabbath mode

Parts & Accessories				
ZOF-C004	Replacement Carbon Filter			\$ 11.99
PRHAN-F001	Pro Handle Kit (1 per kit)			\$ 49.99

\*Depth of cabinet with door, not including handle



<b>DUAL ZONE FULL SIZE WINE COOLER</b>				
PRW24F02BG	SS + Glass	24" x 69-1/2" x 27-1/2"*	\$ 2,399	\$ 2,499

- 40° - 65° F (each zone)
- 40 dBA
- 3-color LED lighting
- Built-in or freestanding
- Field-reversible door
- 138 bottle capacity
- PreciseTemp™
- Active cooling technology
- Vibration dampening system
- 304-grade stainless steel
- 13 full-extension wood racks
- 1, half capacity wood rack
- Sabbath mode
- Zero clearance door hinge

Parts & Accessories				
ZOF-C004	Replacement Carbon Filter			\$ 11.99
PRHAN-F001	Pro Handle Kit (1 per kit)			\$ 49.99
PRDISP-F001	5 Bottle Display Rack			\$ 49.99

\*Depth of cabinet with door, not including handle



**DID YOU KNOW** The 5 bottle display rack can display 5 of your favorite wine bottles while storing an additional 9 bottles stacked behind. If you choose not to display any bottles you can now collapse the entire rack for full bottle capacity.

Door Finish: 304-grade Stainless Steel + Glass. Cabinet Finish: Black. Interior Finish: Black  
Warranty: 2 years non-consumable parts, 5 years compressor, 1 year labor

All prices, models, and specifications are subject to change without notice.  
Please call to verify pricing and availability.  
DEC19.0101

UNDER-CABINET



BREEZE I

MODEL	FINISH	SIZE W x D	MAP	MSRP
<b>BREEZE I</b> 250 CFM Range Hood w/ Slide Controls and Recirculating Option				
AK1124W	W	24" x 20-3/32"	\$ 199	\$ 219
AK1124S	S	24" x 20-3/32"	\$ 219	\$ 239
AK1100B	B	30" x 20-3/32"	\$ 199	\$ 219
AK1100W	W	30" x 20-3/32"	\$ 199	\$ 219
AK1100S	S	30" x 20-3/32"	\$ 219	\$ 239
AK1136B	B	36" x 20-3/32"	\$ 219	\$ 239
AK1136W	W	36" x 20-3/32"	\$ 219	\$ 239
AK1136S	S	36" x 20-3/32"	\$ 239	\$ 259

- Max. Blower CFM: 250
- Sones: 1.8 - 3.5
- 5-1/2" body height
- 3-1/4"x10" vertical ducting
- 3-1/4"x10" horizontal ducting
- 3 speed mechanical slide controls
- 35W halogen lights
- Dual-level lighting
- Extra-wide mesh filters

**Accessories**

OAK11-21001	Recirculating Kit (w/ charcoal filter)	\$ 19.99
OAK11-20001	Charcoal Filter Replacement (2 per kit)	\$ 14.99
ZOB0023	Halogen Bulb (GU10 35W)	\$ 10.99
ZOB0040	Bloom™ GU10 LED (6W, 3000K)	\$ 14.99



BREEZE II

MODEL	FINISH	SIZE W x D	MAP	MSRP
<b>BREEZE II</b> 400 CFM Range Hood w/ Electronic Controls and BriteStrip™ LED Lighting				
AK1200BB	B	30" x 20-3/32"	\$ 329	\$ 349
AK1200BW	W	30" x 20-3/32"	\$ 329	\$ 349
AK1200BS	S	30" x 20-3/32"	\$ 349	\$ 369
AK1200BBS	Blk SS	30" x 20-3/32"	\$ 399	\$ 419
AK1236BB	B	36" x 20-3/32"	\$ 349	\$ 369
AK1236BW	W	36" x 20-3/32"	\$ 349	\$ 369
AK1236BS	S	36" x 20-3/32"	\$ 359	\$ 379
AK1236BBS	Blk SS	36" x 20-3/32"	\$ 409	\$ 429

- Max. Blower CFM: 400
- Sones: 1.9 - 4.5
- 5-1/2" body height
- Auto delay-off
- 3-1/4"x10" vertical ducting
- 3-1/4"x10" horizontal ducting
- 3 speed electronic controls
- BriteStrip™ LED lighting (3000K)
- Dual-level lighting
- Extra-wide mesh filters

**Accessories**

OAK11-21001	Recirculating Kit (w/ charcoal filter)	\$ 19.99
OAK11-20001	Charcoal Filter Replacement (2 per kit)	\$ 14.99
MUA006A	Make-Up Air Kit	\$ 189.00

Finish: (B)-Black (W)-White (S)-Stainless Steel (Blk SS)-Black Stainless Steel  
 Warranty: 3 years non-consumable parts, 1 year labor

All prices, models, and specifications are subject to change without notice.  
 Please call to verify pricing and availability.  
 DEC19.0101

UNDER-CABINET



CYCLONE

MODEL	FINISH	SIZE W x D	MAP	MSRP
<b>CYCLONE 600 CFM Self-Cleaning Hood w/ Slide Controls</b>				
AK6500BB	B	30" x 22-1/4"	\$ 369	\$ 399
AK6500BW	W	30" x 22-1/4"	\$ 369	\$ 399
AK6500BS	S	30" x 22-1/4"	\$ 399	\$ 439
AK6500BBS	Blk SS	30" x 22-1/4"	\$ 449	\$ 489
AK6536BB	B	36" x 22-1/4"	\$ 399	\$ 429
AK6536BW	W	36" x 22-1/4"	\$ 399	\$ 429
AK6536BS	S	36" x 22-1/4"	\$ 439	\$ 479
AK6536BBS	Blk SS	36" x 22-1/4"	\$ 489	\$ 529
AK6542BS	S	42" x 22-1/4"	\$ 489	\$ 529
<ul style="list-style-type: none"> <li>•Max. Blower CFM: 600</li> <li>•Sones: 1.5-5</li> <li>•6-3/8" body height</li> <li>•6" or 3-1/4"x10" vertical ducting</li> <li>•3-1/4"x10" horizontal ducting</li> <li>•3 speed mechanical slide controls</li> <li>•35W halogen lights</li> <li>•Dual-level lighting</li> <li>•Self cleaning</li> </ul>				
<b>Accessories</b>				
ZOB0023	Halogen Bulb (GU10 35W 120V)			\$ 10.99
ZOB0040	Bloom™ GU10 LED (6W, 3000K)			\$ 14.99
MUA006A	Make-Up Air Kit			\$ 189.00



HURRICANE

ACT

MODEL	FINISH	SIZE W x D	MAP	MSRP
<b>HURRICANE 695 CFM Self-Cleaning Hood w/ Airflow Control Technology (ACT™)</b>				
AK2500BB	B	30" x 22-1/8"	\$ 449	\$ 479
AK2500BW	W	30" x 22-1/8"	\$ 449	\$ 479
AK2500BS	S	30" x 22-1/8"	\$ 499	\$ 539
SO AK2536BB	B	36" x 22-1/8"	\$ 499	\$ 539
SO AK2536BW	W	36" x 22-1/8"	\$ 499	\$ 539
AK2536BS	S	36" x 22-1/8"	\$ 529	\$ 569
<ul style="list-style-type: none"> <li>•Max. Blower CFM: 695</li> <li>•ACT Max. Blower CFM: 390, 290</li> <li>•Sones: 1.5-5.5</li> <li>•7" body height</li> <li>•7" or 3-1/4"x10" vertical ducting</li> <li>•3-1/4"x10" horizontal ducting</li> <li>•3 speed electronic touch controls</li> <li>•Self cleaning</li> <li>•35W halogen lights</li> <li>•Dual-level lighting</li> <li>•Auto delay-off</li> </ul>				
<b>Accessories</b>				
ZOB0023	Halogen Bulb (GU10 35W 120V)			\$ 10.99
ZOB0040	Bloom™ GU10 LED (6W, 3000K)			\$ 14.99
MUA008A	Make-Up Air Kit			\$ 199.00



TYPHOON

ACT

MODEL	FINISH	SIZE W x D	MAP	MSRP
<b>TYPHOON 850 CFM Self-Cleaning Hood w/ Airflow Control Technology (ACT™)</b>				
AK2100BB	B	30" x 20-3/4"	\$ 629	\$ 679
AK2100BW	W	30" x 20-3/4"	\$ 629	\$ 679
AK2100BS	S	30" x 20-3/4"	\$ 679	\$ 739
SO AK2136BB	B	36" x 20-3/4"	\$ 659	\$ 709
SO AK2136BW	W	36" x 20-3/4"	\$ 659	\$ 709
SO AK2136BS	S	36" x 20-3/4"	\$ 709	\$ 759
SO AK2142BS	S	42" x 20-3/4"	\$ 769	\$ 829
AK2148BS	S	48" x 20-3/4"	\$ 809	\$ 879
<ul style="list-style-type: none"> <li>•Max. Blower CFM: 850</li> <li>•ACT Max. Blower CFM: 390, 290</li> <li>•Sones: 0.9-5</li> <li>•7-7/8" body height</li> <li>•7" or 3-1/4"x10" vertical ducting</li> <li>•3-1/4"x10" horizontal ducting</li> <li>•6 speed capacitive touch controls</li> <li>•Self cleaning</li> <li>•35W halogen lights</li> <li>•Dual-level lighting</li> <li>•Auto delay-off</li> </ul>				
<b>Accessories</b>				
ZOB0023	Halogen Bulb (GU10 35W 120V)			\$ 10.99
ZOB0040	Bloom™ GU10 LED (6W, 3000K)			\$ 14.99
MUA008A	Make-Up Air Kit			\$ 199.00

Finish: (B)-Black (W)-White (S)-Stainless Steel (Blk SS)-Black Stainless Steel  
 Warranty: 10 years non-consumable parts, 1 year labor

All prices, models, and specifications are subject to change without notice.  
 Please call to verify pricing and availability.  
 DEC19.0101

UNDER-CABINET



PYRAMID

MODEL	FINISH	SIZE W x D	MAP	MSRP
<b>PYRAMID 400 CFM Designer Hood w/ Pyramid-Shaped Body</b>				
ZPY-E30AS	S	30" x 21"	\$ 449	\$ 489
ZPY-E36AS	S	36" x 21"	\$ 519	\$ 559
<b>PYRAMID 290 CFM Designer Hood w/ Pyramid-Shaped Body</b>				
ZPY-E30AS290	S	30" x 21"	\$ 449	\$ 489
•Max. Blower CFM: 400 or 290		•7" or 3-1/4"x10" vertical ducting	•50W halogen lights	
•Sones: 2-5 or 1.1-3.2		•3-1/4"x10" horizontal ducting	•Dual-level lighting	
•7-3/8" body height		•3 speed mechanical slide controls	•Adjustable utensil bar	
<b>Accessories</b>				
ZRC-0200	Recirculating Kit (w/ charcoal filters)			\$ 49.00
ZOF-C002	Charcoal Filter Replacement (each)			\$ 14.99
ZOB0020	Halogen Bulb (GU10 50W 120V)			\$ 10.99
ZOB0040	Bloom™ GU10 LED (6W, 3000K)			\$ 14.99
MUA006A	Make-Up Air Kit			\$ 189.00



TAMBURO

MODEL	FINISH	SIZE W x D	MAP	MSRP
<b>TAMBURO 400 CFM Designer Hood w/ Crescent-Shaped Body</b>				
ZTA-E30AS	S	30" x 21-1/8"	\$ 459	\$ 499
ZTA-E36AS	S	36" x 21-1/8"	\$ 539	\$ 579
<b>TAMBURO 290 CFM Designer Hood w/ Crescent-Shaped Body</b>				
<b>SO</b> ZTA-E30AS290	S	30" x 21-1/8"	\$ 459	\$ 499
•Max. Blower CFM: 400 or 290		•7" or 3-1/4"x10" vertical ducting	•50W halogen lights	
•Sones: 2-5 or 1.1-3.2		•3-1/4"x10" horizontal ducting	•Dual-level lighting	
•7-3/8" body height		•3 speed mechanical slide controls	•Adjustable utensil bar	
<b>Accessories</b>				
ZRC-0200	Recirculating Kit (w/ charcoal filters)			\$ 49.00
ZOF-C002	Charcoal Filter Replacement (each)			\$ 14.99
ZOB0020	Halogen Bulb (GU10 50W 120V)			\$ 10.99
ZOB0040	Bloom™ GU10 LED (6W, 3000K)			\$ 14.99
MUA006A	Make-Up Air Kit			\$ 189.00

**DID YOU KNOW** Zephyr Pyramid, Tamburo and Gust under-cabinet hoods all include adjustable utensil rails to hang common cooking utensils.

Finish: (S)-Stainless Steel  
 Warranty: 3 years non-consumable parts, 1 year labor

All prices, models, and specifications are subject to change without notice.  
 Please call to verify pricing and availability.  
 DEC19.0101

UNDER-CABINET

CORE COLLECTION



PISA

MODEL	FINISH	SIZE W x D	MAP	MSRP
<b>PISA</b> 500 CFM Designer Hood w/ Sliding Glass				
SO ZPI-E24AG	S* w/ Glass	24" x 18-3/4"	\$ 599	\$ 619
SO ZPI-E24AW	W* w/ Glass	24" x 18-3/4"	\$ 599	\$ 619
ZPI-E30AG	S* w/ Glass	30" x 18-3/4"	\$ 619	\$ 639
ZPI-E30AW	W* w/ Glass	30" x 18-3/4"	\$ 619	\$ 639
ZPI-E36AG	S* w/ Glass	36" x 18-3/4"	\$ 649	\$ 669
<b>PISA</b> 290 CFM Designer Hood w/ Sliding Glass				
SO ZPI-E24AG290	S* w/ Glass	24" x 18-3/4"	\$ 579	\$ 599
SO ZPI-E24AW290	W* w/ Glass	24" x 18-3/4"	\$ 579	\$ 599
ZPI-E30AG290	S* w/ Glass	30" x 18-3/4"	\$ 599	\$ 619
ZPI-E30AW290	W* w/ Glass	30" x 18-3/4"	\$ 599	\$ 619
ZPI-E36AG290	S* w/ Glass	36" x 18-3/4"	\$ 619	\$ 639

- Max. Blower CFM: 500 or 290
- Sones 1.3-3.2 or 1.7-5.3
- 1-1/2" body height\*\*
- 6" round vertical ducting
- 6" round horizontal ducting
- 3 speed mechanical slide controls
- 50W halogen lights
- Sliding glass canopy

**Accessories**

ZRC-00PI	Recirculating Kit (w/ charcoal filters)	\$ 39.99
ZOF-C0PI	Charcoal Filter Replacement (each)	\$ 12.99
ZOB0020	Halogen Bulb (GU10 50W 120V)	\$ 10.99
ZOB0040	Bloom™ GU10 LED (6W, 3000K)	\$ 14.99
MUA006A	Make-Up Air Kit	\$ 189.00

\*Refers to handle color. Body is painted gray.  
 \*\*A 9-9/16" blower housing is installed in the upper cabinet.

CORE COLLECTION



GENOVA

<b>GENOVA</b> 500 CFM Designer Hood w/ Smoke Gray Sliding Glass				
ZGE-E30AS	S w/ Glass	30" x 18-5/8"	\$ 869	\$ 939
ZGE-E36AS	S w/ Glass	36" x 18-5/8"	\$ 979	\$1,049
<b>GENOVA</b> 290 CFM Designer Hood w/ Smoke Gray Sliding Glass				
ZGE-E30AS290	S w/ Glass	30" x 18-5/8"	\$ 869	\$ 939
SO ZGE-E36AS290	S w/ Glass	36" x 18-5/8"	\$ 979	\$1,049

- Max. Blower CFM: 500 or 290
- Sones: 1.7-5.3 or 1.4-2.8
- 3" body height\*
- 6" round vertical ducting
- Sliding glass canopy
- 3 speed electronic touch controls
- 50W halogen lights
- Dual-level lighting
- Remote control option

**Accessories**

ZRC-00GE	Recirculating Kit (return air vent & charcoal filter)	\$ 39.99
ZOF-C0GE	Charcoal Filter Replacement (each)	\$ 12.99
ZOB0020	Halogen Bulb (GU10 50W 120V)	\$ 10.99
ZOB0040	Bloom™ GU10 LED (6W, 3000K)	\$ 14.99
14000005	RF Wireless Remote Control	\$ 99.00
MUA006A	Make-Up Air Kit	\$ 189.00

\*An 11" blower housing is installed in the upper cabinet.

Finish: (W)-White (S)-Stainless Steel  
 Warranty: 3 years non-consumable parts, 1 year labor

All prices, models, and specifications are subject to change without notice.  
 Please call to verify pricing and availability.  
 DEC19.0101

UNDER-CABINET



CORE COLLECTION

GUST

MODEL	FINISH	SIZE W x D	MAP	MSRP
<b>GUST</b> 400 CFM 7-3/8in Tall Euro-Pro Hood w/ Mesh Filters				
AK7100AS	S	30" x 21"	\$ 499	\$ 539
AK7136AS	S	36" x 21"	\$ 549	\$ 589
<b>GUST</b> 400 CFM 7-3/8in Tall Euro-Pro Hood w/ Baffle Filters				
AK7100AS-BF	S	30" x 21"	\$ 549	\$ 589
AK7136AS-BF	S	36" x 21"	\$ 599	\$ 639
<b>GUST</b> 290 CFM 7-3/8in Tall Euro-Pro Hood w/ Mesh Filters				
AK7100AS290	S	30" x 21"	\$ 499	\$ 539
AK7136AS290	S	36" x 21"	\$ 549	\$ 589
<ul style="list-style-type: none"> <li>•Max. Blower CFM: 400 or 290</li> <li>•Sones: 2-5 or 1.1-3.2</li> <li>•7-3/8" body height</li> <li>•7" or 3-1/4"x10" vertical ducting</li> <li>•3-1/4"x10" horizontal ducting</li> <li>•3 speed mechanical slide controls</li> <li>•50W halogen lights</li> <li>•Dual-level lighting</li> <li>•Adjustable utensil bar</li> </ul>				
<b>Accessories</b>				
ZRC-0200	Recirculating Kit (w/ charcoal filters)			\$ 49.00
ZOF-C002	Charcoal Filter Replacement (each)			\$ 14.99
ZOB0020	Halogen Bulb (GU10 50W 120V)			\$ 10.99
ZOB0040	Bloom™ GU10 LED (6W, 3000K)			\$ 14.99
MUA006A	Make-Up Air Kit			\$ 189.00



PRO COLLECTION

TEMPEST I  
ACT™

MODEL	FINISH	SIZE W x D	MAP	MSRP
<b>TEMPEST I</b> 650 CFM 11in Tall Pro-Style Hood w/ Airflow Control Technology (ACT™)				
AK7000BS	S	30" x 22-1/2"	\$ 899	\$ 999
AK7036BS	S	36" x 22-1/2"	\$ 949	\$1,049
AK7042BS	S	42" x 22-1/2"	\$1,049	\$1,149
AK7048BS	S	48" x 22-1/2"	\$1,249	\$1,349
<ul style="list-style-type: none"> <li>•Max. Blower CFM: 650 (included)</li> <li>•Max. Blower CFM: 1,200 (optional)</li> <li>•ACT Max. Blower CFM: 390, 290</li> <li>•Sones: 1-6 (650) or 3.5-9 (1,200)</li> <li>•11" body height</li> <li>•8" or 10" round vertical ducting</li> <li>•8" or 3-1/4"x10" horizontal ducting</li> <li>•6 speed electronic touch controls</li> <li>•CleanAir function</li> <li>•Auto delay-off</li> <li>•35W halogen lights</li> <li>•Dual-level lighting</li> <li>•Pro baffle filters</li> <li>•Wireless remote option</li> </ul>				
<b>Accessories and Blowers</b>				
AK0720	12" Duct Cover (For AK7000BS)			\$ 209.00
AK0726	12" Duct Cover (For AK7036BS)			\$ 229.00
AK0722	12" Duct Cover (For AK7042BS)			\$ 249.00
AK0728	12" Duct Cover (For AK7048BS)			\$ 269.00
ZRC-7000B*	Recirculating Kit (For AK7000BS, w/ charcoal filters)			\$ 209.00
ZRC-7036B*	Recirculating Kit (For AK7036BS, w/ charcoal filters)			\$ 249.00
ZRC-7042B*	Recirculating Kit (For AK7042BS, w/ charcoal filters)			\$ 289.00
ZRC-7048B*	Recirculating Kit (For AK7048BS, w/ charcoal filters)			\$ 349.00
ZOF-C002	Charcoal Filter Replacement (each)			\$ 14.99
SO AK0710	SS Backsplash w/ Shelves (For AK7000BS)			\$ 269.00
AK0716	SS Backsplash w/ Shelves (For AK7036BS)			\$ 279.00
SO AK0712	SS Backsplash w/ Shelves (For AK7042BS)			\$ 309.00
SO AK0718	SS Backsplash w/ Shelves (For AK7048BS)			\$ 349.00
ZOB0023	Halogen Bulb (GU10 35W 120V)			\$ 10.99
ZOB0040	Bloom™ GU10 LED (6W, 3000K)			\$ 14.99
PBD-1200A**	1,200 CFM Internal Blower Kit (10" round duct)			\$ 249.00
14000005	RF Wireless Remote Control			\$ 99.00
MUA008A	Make-Up Air Kit (650 CFM)			\$ 199.00
MUA010A	Make-Up Air Kit (1,200 CFM)			\$ 249.00



shown with recirculating kit

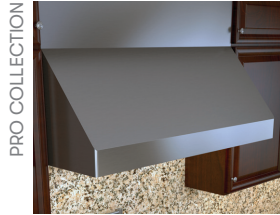
\*ZRC-70xxB recirculating kits are compatible with 650cfm internal blower only (blower included with hood). ZRC-70xxB includes a 4-inch tall return-air box, so please plan your installation accordingly.  
 \*\*PBD-1200A is a dual internal blower kit with a single blower and two blower openings. To complete the kit you must remove the blower from the hood and install it into the PBD-1200A kit.  
**NOTE:** PBD-1200A blower is only compatible with models AK7036BS, AK7042BS and AK7048BS.

Finish: (S)-Stainless Steel

Warranty: 3 years non-consumable parts, 1 year labor

All prices, models, and specifications are subject to change without notice. Please call to verify pricing and availability. DEC19.0101

WALL



TEMPEST II  
ACT™

MODEL	FINISH	SIZE W x D	MAP	MSRP
<b>TEMPEST II 650 CFM 18in Tall Pro-Style Hood w/ Airflow Control Technology (ACT™)</b>				
AK7500BS	S	30" x 24"	\$1,099	\$1,199
AK7536BS	S	36" x 24"	\$1,199	\$1,299
AK7542BS	S	42" x 24"	\$1,299	\$1,399
AK7548BS	S	48" x 24"	\$1,399	\$1,499
AK7554BS	S	54" x 24"	\$1,599	\$1,699

- Max. Blower CFM: 650 (included)
- Max. Blower CFM: 1,200 (optional)
- ACT Max. Blower CFM: 390, 290
- Sones: 1-6 (650) or 3.5-9 (1,200)
- Auto delay-off
- 8" or 10" round vertical ducting
- 8", 10" or 3-1/4"x10" horizontal ducting
- 6 speed electronic touch controls
- Wireless remote option
- 35W halogen lights
- Dual-level lighting
- Pro baffle filters
- CleanAir function

**Accessories and Blowers**

AK0720	12" Duct Cover (For AK7500BS)	\$ 209.00
AK0726	12" Duct Cover (For AK7536BS)	\$ 229.00
AK0722	12" Duct Cover (For AK7542BS)	\$ 249.00
AK0728	12" Duct Cover (For AK7548BS)	\$ 269.00
<b>SO</b> AK0724	12" Duct Cover (For AK7554BS)	\$ 329.00
ZRC-7000B*	Recirculating Kit (For AK7500BS, w/ charcoal filters)	\$ 209.00
ZRC-7036B*	Recirculating Kit (For AK7536BS, w/ charcoal filters)	\$ 249.00
ZRC-7042B*	Recirculating Kit (For AK7542BS, w/ charcoal filters)	\$ 289.00
ZRC-7048B*	Recirculating Kit (For AK7548BS, w/ charcoal filters)	\$ 349.00
ZOF-C002	Charcoal Filter Replacement (each)	\$ 14.99
<b>SO</b> AK0710	SS Backsplash w/ Shelves (For AK7500BS)	\$ 269.00
<b>SO</b> AK0716	SS Backsplash w/ Shelves (For AK7536BS)	\$ 279.00
<b>SO</b> AK0712	SS Backsplash w/ Shelves (For AK7542BS)	\$ 309.00
<b>SO</b> AK0718	SS Backsplash w/ Shelves (For AK7548BS)	\$ 349.00
<b>SO</b> AK0714	SS Backsplash w/ Shelves (For AK7554BS)	\$ 399.00
ZOB0023	Halogen Bulb (GU10 35W 120V)	\$ 10.99
ZOB0040	Bloom™ GU10 LED (6W, 3000K)	\$ 14.99
PBD-1200A**	1,200 CFM Internal Blower Kit (10" round duct)	\$ 249.00
14000005	RF Wireless Remote Control	\$ 99.00
MUA008A	Make-Up Air Kit (650 CFM)	\$ 199.00
MUA010A	Make-Up Air Kit (1,200 CFM)	\$ 249.00

\*ZRC-70xxB recirculating kits are compatible with 650cfm internal blower only (blower included with hood). ZRC-70xxB includes a 4-inch tall return-air box, so please plan your installation accordingly.

\*\*PBD-1200A is a dual internal blower kit with a single blower and two blower openings. To complete the kit you must remove the blower from the hood and install it into the PBD-1200A kit.

Finish: (S)-Stainless Steel

Warranty: 3 years non-consumable parts, 1 year labor

All prices, models, and specifications are subject to change without notice. Please call to verify pricing and availability. DEC19.0101

WALL



PRO COLLECTION

ROMA PRO  
ACT

MODEL	FINISH	SIZE W x D	MAP	MSRP
<b>ROMA PRO 750 CFM Pro-Style Chimney Hood w/ Powerwave™ Blower &amp; LED Lights</b>				
ZRP-E36AS	S	36" x 24"	\$1,899	\$1,999
ZRP-E48AS	S	48" x 24"	\$2,199	\$2,399
<ul style="list-style-type: none"> <li>•Max. Blower CFM: 750 (included)</li> <li>•Max. Blower CFM: 1,300 (optional)</li> <li>•ACT Max. Blower CFM: 590, 390, 290</li> <li>•Auto delay-off</li> </ul>		<ul style="list-style-type: none"> <li>•8" or 10" round vertical ducting</li> <li>•Dual-level lighting</li> <li>•Accommodates 10'3" ceiling height</li> <li>•Directional lighting</li> </ul>	<ul style="list-style-type: none"> <li>•6W Bloom™ GU10 LED lights</li> <li>•Pro baffle filters</li> <li>•6 speed LCD controls</li> <li>•Wireless remote option</li> </ul>	
<b>Accessories</b>				
PBD-1300A	1,300 CFM Internal Blower Kit (10" round duct)			\$ 399.00
Z1C-00RP	Duct Cover Extension (For a 10'-12' ceiling)			\$ 349.00
14000005	RF Wireless Remote Control			\$ 99.00
MUA008A	Make-Up Air Kit (750 CFM)			\$ 199.00
MUA010A	Make-Up Air Kit (1,300 CFM)			\$ 249.00



PRO COLLECTION

TITAN WALL  
ACT

MODEL	FINISH	SIZE W x D	MAP	MSRP
<b>TITAN 750 CFM Pro-Style Chimney Hood w/ Powerwave™ Blower &amp; LED Lights</b>				
AK7636AS	S	36" x 24"	\$1,899	\$1,999
AK7642AS	S	42" x 24"	\$1,999	\$2,099
AK7648AS	S	48" x 24"	\$2,199	\$2,399
AK7654AS	S	54" x 24"	\$2,299	\$2,499
AK7660AS	S	60" x 24"	\$2,499	\$2,699
<ul style="list-style-type: none"> <li>•Max. Blower CFM: 750 (included)</li> <li>•Max. Blower CFM: 1,300 (optional)</li> <li>•ACT Max. Blower CFM: 590, 390, 290</li> <li>•Auto delay-off</li> </ul>		<ul style="list-style-type: none"> <li>•8" or 10" round vertical &amp; horizontal ducting</li> <li>•Dual-level lighting</li> <li>•Accommodates 9'6" ceiling height</li> <li>•Directional lighting</li> </ul>	<ul style="list-style-type: none"> <li>•6W Bloom™ GU10 LED lights</li> <li>•Pro baffle filters</li> <li>•6 speed LCD controls</li> <li>•Wireless remote option</li> </ul>	
<b>Accessories</b>				
PBD-1300A	1,300 CFM Internal Blower Kit (10" round duct)			\$ 399.00
Z1C-0076	Duct Cover Extension - 36", 42" (For a 10'-12' ceiling)			\$ 299.00
Z1C-0176	Duct Cover Extension - 48", 54", 60" (For a 10'-12' ceiling)			\$ 349.00
14000005	RF Wireless Remote Control			\$ 99.00
MUA008A	Make-Up Air Kit (750 CFM)			\$ 199.00
MUA010A	Make-Up Air Kit (1,300 CFM)			\$ 249.00

Finish: (S)-Stainless Steel

Warranty: 3 years non-consumable parts, 1 year labor

All prices, models, and specifications are subject to change without notice. Please call to verify pricing and availability. DEC19.0101

WALL

CORE COLLECTION



OMBRA  
ACT™

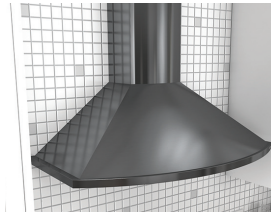
MODEL	FINISH	SIZE W x D	MAP	MSRP
<b>OMBRA</b> 600 CFM Traditional Wall Hood w/ Airflow Control Technology (ACT™)				
ZOM-E30AS	S	30" x 19-3/4"	\$ 599	\$ 649
ZOM-E30ABS	Blk SS	30" x 19-3/4"	\$ 699	\$ 749
ZOM-E36AS	S	36" x 19-3/4"	\$ 649	\$ 699
ZOM-E36ABS	Blk SS	36" x 19-3/4"	\$ 749	\$ 799

- Max. Blower CFM: 600
- ACT Max. Blower CFM: 390, 290
- Sones: 1-6
- 4 speed capacitive touch controls
- 6" round vertical ducting
- Accommodates 9'4" ceiling height
- Halogen lighting
- Dual-level lighting
- Auto delay-off

**Accessories**

ZRC-01OM	Recirculating Kit (w/ charcoal filters)	\$ 79.00
ZOF-C091	Charcoal Filter Replacement (each)	\$ 19.99
Z1C-01OMS	Stainless Steel Duct Cover Extension, (For up to a 12' ceiling)	\$ 209.00
Z1C-01OMBS	Black SS Duct Cover Extension, (For up to a 12' ceiling)	\$ 299.00
Z0B0040	Bloom™ GU10 LED (6W, 3000K)	\$ 14.99
MUA006A	Make-Up Air Kit	\$ 189.00
Z0F-B002	Hybrid Baffle Filter Kit (2 filters)	\$ 79.00

CORE COLLECTION



SAVONA  
ACT™

MODEL	FINISH	SIZE W x D	MAP	MSRP
<b>SAVONA</b> 685 CFM Classic Curved Body Wall Hood w/ Airflow Control Technology (ACT™)				
ZSA-E30DB	B	30" x 19-1/2"	\$ 749	\$ 799
ZSA-E30DW	W	30" x 19-1/2"	\$ 749	\$ 799
ZSA-E30DS	S	30" x 19-1/2"	\$ 749	\$ 799
ZSA-E30DBS	Blk SS	30" x 19-1/2"	\$ 999	\$1,099
ZSA-M90DB	B	35-7/16" x 19-1/2"	\$ 849	\$ 899
ZSA-M90DW	W	35-7/16" x 19-1/2"	\$ 849	\$ 899
ZSA-M90DS	S	35-7/16" x 19-1/2"	\$ 849	\$ 899
ZSA-M90DBS	Blk SS	35-7/16" x 19-1/2"	\$1,099	\$1,199

- Max. Blower CFM: 685
- ACT Max. Blower CFM: 390, 290
- Sones: 1-6
- 5 speed ICON Touch® controls
- 6" round vertical ducting
- Accommodates 9'7" ceiling height
- BriteStrip™ LED Lighting (3000K)
- Dual-level lighting
- Auto delay-off

**Accessories**

ZRC-00SV	Recirculating Kit (w/ charcoal filters)	\$ 79.00
ZOF-C002	Charcoal Filter Replacement (each)	\$ 14.99
Z1C-01SAB	Duct Cover Extension, B (For up to a 12' ceiling)	\$ 179.00
Z1C-01SAW	Duct Cover Extension, W (For up to a 12' ceiling)	\$ 179.00
Z1C-01SA	Duct Cover Extension, S (For up to a 12' ceiling)	\$ 209.00
Z1C-01SABS	Duct Cover Extension, Blk SS (For up to a 12' ceiling)	\$ 499.00
MUA008A	Make-Up Air Kit	\$ 199.00
Z0F-B001	Baffle Filter Kit (2 filters)	\$ 79.00

**DID YOU KNOW** Zephyr has a comprehensive hood height calculator online to determine if our chimney range hoods will fit in your kitchen. [zephyronline.com/customer-care/range-hood-height-calculator](http://zephyronline.com/customer-care/range-hood-height-calculator)

Finish: (B)-Black (W)-White (S)-Stainless Steel (Blk SS)-Black Stainless Steel  
Warranty: 3 years non-consumable parts, 1 year labor

All prices, models, and specifications are subject to change without notice.  
Please call to verify pricing and availability.  
DEC19.0101

WALL

CORE COLLECTION



ANZIO WALL  
ACT™

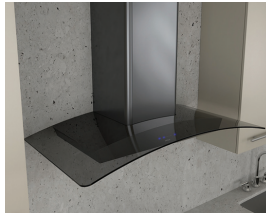
MODEL	FINISH	SIZE W x D	MAP	MSRP
<b>ANZIO</b> 600 CFM Low-Profile Modern Wall Hood w/ Airflow Control Technology (ACT™)				
ZAN-E24CS	S	24" x 22"	\$ 799	\$ 849
ZAN-E30CS	S	30" x 22"	\$ 849	\$ 899
ZAN-E30CBS	Blk SS	30" x 22"	\$1,099	\$1,199
ZAN-M90CS	S	35-7/16" x 22"	\$ 949	\$ 999
ZAN-M90CBS	Blk SS	35-7/16" x 22"	\$1,199	\$1,299

- Max. Blower CFM: 600
- ACT Max. Blower CFM: 390, 290
- Sones: 1-6
- 5 speed ICON Touch® controls
- 6" round vertical ducting
- Accommodates 9'10" ceiling height
- BriteStrip™ LED Lighting (3000K)
- Dual-level lighting
- Auto delay-off

**Accessories**

ZRC-01AN	Recirculating Kit (w/ charcoal filters)	\$ 79.00
ZOF-C091	Charcoal Filter Replacement (each)	\$ 14.99
Z1C-00AN	Duct Cover Extension (For up to a 12' ceiling)	\$ 209.00
Z1C-00ANBS	Duct Cover Extension, Blk SS (For up to a 12' ceiling)	\$ 499.00
RED006	Airflow Reducer, reduces 25 CFM	\$ 19.99
MUA006A	Make-Up Air Kit	\$ 189.00
ZOF-B002	Hybrid Baffle Filter Kit (2 filters)	\$ 79.00

CORE COLLECTION



RAVENNA WALL  
ACT™

MODEL	FINISH	SIZE W x D	MAP	MSRP
<b>RAVENNA</b> 600 CFM Curved Glass Wall Hood w/ Airflow Control Technology (ACT™)				
ZRV-E30BGC	S w/ Clear Glass	30" x 19-3/4"	\$ 799	\$ 849
ZRV-E30BGG	S w/ Smoke Gray Glass	30" x 19-3/4"	\$ 799	\$ 849
ZRV-E30BBSGG	Blk SS w/ Smoke Gray Glass	30" x 19-3/4"	\$ 999	\$1,099
ZRV-M90BGC	S w/ Clear Glass	35-3/16" x 19-3/4"	\$ 849	\$ 899
ZRV-M90BGG	S w/ Smoke Gray Glass	35-3/16" x 19-3/4"	\$ 849	\$ 899
ZRV-M90BBSGG	Blk SS w/ Smoke Gray Glass	35-3/16" x 19-3/4"	\$1,049	\$1,149

- Max. Blower CFM: 600
- ACT Max. Blower CFM: 390, 290
- Sones: 1-6
- 5 speed ICON Touch® controls
- 6" round vertical ducting
- Accommodates 9'4" ceiling height
- BriteStrip™ LED Lighting (3000K)
- Dual-level lighting
- Auto delay-off

**Accessories**

ZRC-00RV	Recirculating Kit (w/ charcoal filters)	\$ 79.00
ZOF-C002	Charcoal Filter Replacement (each)	\$ 14.99
Z1C-00RV	Duct Cover Extension (For up to a 12' ceiling)	\$ 259.00
Z1C-00RVBS	Duct Cover Extension, Blk SS (For up to a 12' ceiling)	\$ 499.00
RED006	Airflow Reducer, reduces 25 CFM	\$ 19.99
MUA006A	Make-Up Air Kit	\$ 189.00

Finish: (S)-Stainless Steel (Blk SS)-Black Stainless Steel  
Warranty: 3 years non-consumable parts, 1 year labor

All prices, models, and specifications are subject to change without notice.  
Please call to verify pricing and availability.  
DEC19.0101

WALL



CORE COLLECTION

ROMA WALL  
ACT™

MODEL	FINISH	SIZE W x D	MAP	MSRP
<b>ROMA</b> 600 CFM Contemporary Hood w/ Airflow Control Technology (ACT™)				
ZRO-E30DS	S	30" x 22"	\$ 749	\$ 799
ZRO-M90DS	S	35-7/16" x 22"	\$ 849	\$ 899
•Max. Blower CFM: 600		•5 speed ICON Touch® controls	•BriteStrip LED™ Lighting (3000K)	
•ACT Max. Blower CFM: 390, 290		•6" round vertical ducting	•Dual-level lighting	
•Sones: 1-6		•Accommodates 9'9" ceiling height	•Auto delay-off	
<b>Accessories</b>				
ZRC-01RO	Recirculating Kit (2 charcoal filters)			\$ 79.00
ZOF-C002	Charcoal Filter Replacement (each)			\$ 14.99
Z1C-00RO	Duct Cover Extension (For up to a 12' ceiling)			\$ 189.00
RED006	Airflow Reducer, reduces 25 CFM			\$ 19.99
MUA006A	Make-Up Air Kit			\$ 189.00



CORE COLLECTION

ROMA GROOVE  
ACT™

MODEL	FINISH	SIZE W x D	MAP	MSRP
<b>ROMA GROOVE</b> 600 CFM Contemporary Hood w/ Bluetooth® Speakers & ACT™				
<b>SO</b> ZRG-E30AS	S	30" x 22"	\$ 899	\$ 999
<b>SO</b> ZRG-M90AS	S	35-7/16" x 22"	\$ 999	\$ 1,099
•Max. Blower CFM: 600		•5 speed ICON Touch® controls	•BriteStrip LED™ Lighting (3000K)	
•ACT Max. Blower CFM: 390, 290		•6" round vertical ducting	•Dual-level lighting	
•Sones: 1-6		•Accommodates 10' ceiling height	•Auto delay-off	
•Baffle filters				
<b>Accessories</b>				
ZRC-00RG	Recirculating Kit (2 charcoal filters)			\$ 79.00
ZOF-C005	Charcoal Filter Replacement (each)			\$ 19.99
Z1C-00RO	Duct Cover Extension (For up to a 12' ceiling)			\$ 189.00
RED006	Airflow Reducer, reduces 25 CFM			\$ 19.99
MUA006A	Make-Up Air Kit			\$ 189.00

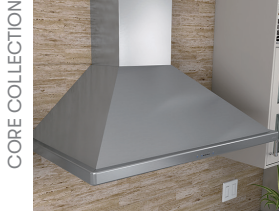
**DID YOU KNOW** The Zephyr Roma Groove is compatible with various Bluetooth® devices such as mobile phones and tablets. Roma Groove allows you to play your music through two built-in stereo speakers, freeing up counter space so you can enjoy your favorite music while entertaining or prepping your evening's dinner.

Finish: (S)-Stainless Steel

Warranty: 3 years non-consumable parts, 1 year labor

All prices, models, and specifications are subject to change without notice. Please call to verify pricing and availability. DEC19.0101

WALL



CORE COLLECTION

SIENA  
ACT

MODEL	FINISH	SIZE W x D	MAP	MSRP
<b>SIENA</b> 650 CFM Traditional Wall Hood w/ Hybrid Baffle Filters & ACT™				
ZSI-E30BS	S	30" x 22"	\$ 849	\$ 899
ZSI-E36BS	S	36" x 22"	\$ 949	\$ 999
<ul style="list-style-type: none"> <li>•Max. Blower CFM: 650</li> <li>•ACT Max. Blower CFM: 390, 290</li> <li>•Sones: 1-6</li> <li>•Hybrid baffle filters</li> </ul>		<ul style="list-style-type: none"> <li>•5 speed ICON Touch® controls</li> <li>•8" round vertical ducting</li> <li>•8" or 3-1/4"x10" horizontal ducting</li> <li>•Accommodates 9'4" ceiling height</li> </ul>	<ul style="list-style-type: none"> <li>•BriteStrip™ LED Lighting (3000K)</li> <li>•Dual-level lighting</li> <li>•Auto delay-off</li> </ul>	
<b>Accessories</b>				
ZRC-00SI	Recirculating Kit (w/ charcoal filters)			\$ 79.00
Z0F-C091	Charcoal Filter Replacement (each)			\$ 19.99
Z1C-00SI	Duct Cover Extension, (For up to a 12' ceiling)			\$ 209.00
MUA008A	Make-Up Air Kit			\$ 199.00



CORE COLLECTION

SIENA ES  
ACT 

MODEL	FINISH	SIZE W x D	MAP	MSRP
<b>SIENA ES</b> 400 CFM ENERGY STAR Traditional Wall Hood w/ Hybrid Baffle Filters & ACT™				
ZSI-E30AS-ES	S	30" x 22"	\$ 799	\$ 849
ZSI-E36AS-ES	S	36" x 22"	\$ 899	\$ 949
<ul style="list-style-type: none"> <li>•Max. Blower CFM: 400</li> <li>•ACT Max. Blower CFM: 290</li> <li>•Sones: 1.4-6</li> <li>•ENERGY STAR certified</li> </ul>		<ul style="list-style-type: none"> <li>•3 speed ICON Touch® controls</li> <li>•8" round vertical ducting</li> <li>•Accommodates 9'4" ceiling height</li> </ul>	<ul style="list-style-type: none"> <li>•13W fluorescent lights</li> <li>•Hybrid baffle filters</li> <li>•Auto delay-off</li> </ul>	
<b>Accessories</b>				
Z1C-00SI	Duct Cover Extension, (For up to a 12' ceiling)			\$ 209.00
Z0B0036	Fluorescent Bulb (GU24 13W 120V)			\$ 12.99



CORE COLLECTION

SIENA PRO WALL  
ACT

MODEL	FINISH	SIZE W x D	MAP	MSRP
<b>SIENA PRO</b> 1,200 CFM Pro Wall Hood w/ Hybrid Baffle Filters & ACT™				
ZSP-E36BS	S	36" x 22"	\$1,199	\$1,299
ZSP-E42BS	S	42" x 22"	\$1,299	\$1,399
ZSP-E48BS	S	48" x 22"	\$1,399	\$1,499
<ul style="list-style-type: none"> <li>•Max. Blower CFM: 1,200</li> <li>•ACT Max. Blower CFM: 590, 390</li> <li>•Sones: 3.5-9</li> <li>•Auto delay-off</li> </ul>		<ul style="list-style-type: none"> <li>•5 speed ICON Touch® controls</li> <li>•10" round vertical ducting</li> <li>•Accommodates 9'4" ceiling height</li> </ul>	<ul style="list-style-type: none"> <li>•BriteStrip™ LED Lighting (3000K)</li> <li>•Dual-level lighting</li> <li>•Hybrid baffle filters</li> </ul>	
<b>Accessories</b>				
Z1C-00SP	Duct Cover Extension (For up to a 12' ceiling)			\$ 269.00
MUA010A	Make-Up Air Kit			\$ 249.00

Finish: (S)-Stainless Steel  
Warranty: 3 years non-consumable parts, 1 year labor

All prices, models, and specifications are subject to change without notice.  
Please call to verify pricing and availability.  
DEC19.0101

WALL



CORE COLLECTION

LUCÉ WALL  
ACT™

MODEL	FINISH	SIZE W x D	MAP	MSRP
<b>LUCÉ</b> 600 CFM Wall Hood w/ LED Accent Lighting & Airflow Control Technology (ACT™)				
ZLU-E30BS	S	30" x 22"	\$1,199	\$1,299
ZLU-M90BS	S	35-7/16" x 22"	\$1,299	\$1,399
<ul style="list-style-type: none"> <li>•Max. Blower CFM: 600</li> <li>•ACT Max. Blower CFM: 390, 290</li> <li>•Sones: 1-6</li> <li>•Auto delay-off</li> </ul>		<ul style="list-style-type: none"> <li>•5 speed ICON Touch® controls</li> <li>•6" round vertical ducting</li> <li>•Accommodates 10' ceiling height</li> </ul>	<ul style="list-style-type: none"> <li>•BriteStrip™ LED Lighting (3000K)</li> <li>•Dual-level lighting</li> <li>•3-color LED accent light</li> </ul>	
<b>Accessories</b>				
ZRC-00LU	Recirculating Kit (w/ charcoal filter)			\$ 79.00
Z0F-C092	Charcoal Filter Replacement (each)			\$ 14.99
Z1C-00LU	Duct Cover Extension (For up to a 12' ceiling)			\$ 209.00
RED006	Airflow Reducer, reduces 25 CFM			\$ 19.99
MUA006A	Make-Up Air Kit			\$ 189.00

Lucé illuminates in cloud white, deep blue and amber.

**DID YOU KNOW** Lucé Wall has a "demo mode" that cycles through each of the three LED accent light colors every 10 seconds. To enable demo mode, hold down the "accent light" button on the bottom of the hood for 3 seconds.



CORE COLLECTION

VENEZIA  
DCBL SUPPRESSION SYSTEM™ ACT™

MODEL	FINISH	SIZE W x D	MAP	MSRP
<b>VENEZIA</b> 715 CFM Wall Hood w/ DCBL Suppression System®, ACT™ & Baffle Filters				
ZVE-E30CS	S	30" x 24"	\$1,219	\$1,299
ZVE-E36CS	S	36" x 24"	\$1,309	\$1,399
ZVE-E42CS	S	42" x 24"	\$1,459	\$1,549
<ul style="list-style-type: none"> <li>•Max. Blower CFM: 715</li> <li>•ACT Max. Blower CFM: 590, 390, 290</li> <li>•Sones: 0.8-5.8</li> <li>•Baffle filters</li> </ul>		<ul style="list-style-type: none"> <li>•6 speed LCD controls</li> <li>•8" round vertical ducting</li> <li>•Accommodates 9'6" ceiling height</li> <li>•CleanAir function</li> </ul>	<ul style="list-style-type: none"> <li>•Bloom™ HD LED lights</li> <li>•Dual-level lighting</li> <li>•Auto delay-off</li> <li>•Directional lighting</li> </ul>	
<b>Accessories</b>				
ZRC-02VE	Recirculating Kit (w/ charcoal filters)			\$ 79.00
Z0F-C091	Charcoal Filter Replacement (each)			\$ 19.99
Z1C-01VE	Duct Cover Extension (For up to a 12' ceiling)			\$ 269.00
RC-0001	RF Wireless Remote Control Kit			\$ 129.00
MUA008A	Make-Up Air Kit			\$ 199.00



CORE COLLECTION

MODENA WALL  
DCBL SUPPRESSION SYSTEM™ ACT™

MODEL	FINISH	SIZE W x D	MAP	MSRP
<b>MODENA</b> 715 CFM Thin Floating Glass Wall Hood w/ DCBL Suppression System® & ACT™				
ZMO-E30AS	S w/ Glass	30" x 22-1/8"	\$1,369	\$1,469
ZMO-M90AS	S w/ Glass	35-7/16" x 22-1/8"	\$1,459	\$1,569
<ul style="list-style-type: none"> <li>•Max. Blower CFM: 715</li> <li>•ACT Max. Blower CFM: 590, 390, 290</li> <li>•Sones: 0.8-5.8</li> <li>•CleanAir function</li> </ul>		<ul style="list-style-type: none"> <li>•6 speed LCD controls</li> <li>•8" round vertical ducting</li> <li>•Accommodates 10' ceiling height</li> </ul>	<ul style="list-style-type: none"> <li>•Bloom™ HD LED lights</li> <li>•Dual-level lighting</li> <li>•Auto delay-off</li> </ul>	
<b>Accessories</b>				
ZRC-00MO	Recirculating Kit (w/ charcoal filter)			\$ 79.00
Z0F-C002	Charcoal Filter Replacement (each)			\$ 14.99
Z1C-00MO	Duct Cover Extension (For up to a 12' ceiling)			\$ 269.00
RC-0001	RF Wireless Remote Control Kit			\$ 129.00
MUA008A	Make-Up Air Kit			\$ 199.00

Finish: (S)-Stainless Steel

Warranty: 3 years non-consumable parts, 1 year labor

All prices, models, and specifications are subject to change without notice. Please call to verify pricing and availability. DEC19.0101

WALL

CORE COLLECTION



MILANO WALL



MODEL	FINISH	SIZE W x D	MAP	MSRP
<b>MILANO 715 CFM Curved Canopy Wall Hood w/ DCBL Suppression System® &amp; ACT™</b>				
ZMI-M90BG	S w/ Glass	35-3/16" x 20-1/2"	\$1,399	\$1,519
ZMI-M90BS	S	35-3/16" x 20-1/2"	\$1,399	\$1,519
<ul style="list-style-type: none"> <li>•Max. Blower CFM: 715</li> <li>•ACT Max. Blower CFM: 590, 390, 290</li> <li>•Sones: 0.8-5.8</li> <li>•CleanAir function</li> <li>•6 speed LCD controls</li> <li>•8" round vertical ducting</li> <li>•Accommodates 10' ceiling height</li> <li>•Bloom™ HD LED lights</li> <li>•Dual-level lighting</li> <li>•Auto delay-off</li> </ul>				
<b>Accessories</b>				
ZRC-00MI	Recirculating Kit (w/ charcoal filters)			\$ 79.00
Z0F-C002	Charcoal Filter Replacement (each)			\$ 14.99
Z1C-01MI	Duct Cover Extension (For up to a 12' ceiling)			\$ 309.00
RC-0001	RF Wireless Remote Control Kit			\$ 129.00
MUA008A	Make-Up Air Kit			\$ 199.00

CORE COLLECTION



VERONA WALL



MODEL	FINISH	SIZE W x D	MAP	MSRP
<b>VERONA 715 CFM LED Illuminated Glass Wall Hood w/ DCBL Suppression System® &amp; ACT™</b>				
ZVO-E30AG	S w/ Glass	30" x 22"	\$1,559	\$1,679
ZVO-M90AG	S w/ Glass	35-7/16" x 22"	\$1,649	\$1,779
<ul style="list-style-type: none"> <li>•Max. Blower CFM: 715</li> <li>•ACT Max. Blower CFM: 590, 390, 290</li> <li>•Sones: 0.8-5.8</li> <li>•CleanAir function</li> <li>•6 speed LCD controls</li> <li>•8" round vertical ducting</li> <li>•Accommodates 10' ceiling height</li> <li>•3 color LED illuminated glass</li> <li>•Bloom™ HD LED lights</li> <li>•Dual-level lighting</li> <li>•Auto delay-off</li> </ul>				
<b>Accessories</b>				
ZRC-00VO	Recirculating Kit (w/ charcoal filters)			\$ 79.00
Z0F-C002	Charcoal Filter Replacement (each)			\$ 14.99
Z1C-00VO	Duct Cover Extension (For up to a 12' ceiling)			\$ 269.00
RC-0001	RF Wireless Remote Control Kit			\$ 129.00
MUA008A	Make-Up Air Kit			\$ 199.00

Verona glass illuminates in cloud white, deep blue and amber.

**DID YOU KNOW** Zephyr Bloom™ HD LED lights are covered under the same 3 year warranty as all internal parts. Zephyr is the first and only range hood manufacturer to warranty lights.

Finish: (S)-Stainless Steel

Warranty: 3 years non-consumable parts, 1 year labor

All prices, models, and specifications are subject to change without notice. Please call to verify pricing and availability. DEC19.0101

WALL

DESIGNER COLLECTION



DUO WALL

MODEL	FINISH	SIZE W x D	MAP	MSRP
<b>DUO</b> Designer Wall Hood w/ LED Lighting - BODY ONLY*				
ADU-M90BSX	S	35-3/8" x 19-5/8"	\$1,499	\$1,699
<ul style="list-style-type: none"> <li>•Max. Blower CFM: 290-1,000 (not included)</li> <li>•Sones: 1.4-6 (depends on blower)</li> <li>•3 speed capacitive touch controls</li> <li>•CleanAir function</li> <li>•6" or 8" round vertical ducting</li> <li>•Decorative mesh filters</li> <li>•Accommodates 10'1" ceiling height</li> <li>•8.5W LED light strip</li> <li>•Tri-level lighting</li> <li>•Wireless remote control</li> </ul>				
<b>Accessories and Blowers</b>				
ZRC-01LA	Recirculating Kit (w/ charcoal filter)			\$ 49.99
Z0F-01AC	Charcoal Filter Replacement (each)			\$ 19.99
Z1C-00LA	Duct Cover Extension (For up to 12' ceiling)			\$ 199.00
CBI-290A	290 CFM Internal Blower (6" round duct)			\$ 189.00
CBI-600A	600 CFM Internal Blower (6" round duct)			\$ 219.00
PBN-1000A	1,000 CFM In-line Blower (8" round duct**)			\$ 699.00
CBE-1000	1,000 CFM External Blower (8" round duct**)			\$ 799.00
RED006	Airflow Reducer, reduces 25 CFM (For CBI-600)			\$ 19.99
MUA006A	Make-Up Air Kit (600 CFM)			\$ 189.00
MUA008A	Make-Up Air Kit (1,000 CFM)			\$ 199.00

\*Requires purchase of Zephyr internal, external or in-line blower, sold separately.  
 \*\*10" round duct connects to external or in-line blower. Must transition from 10" to 8" before duct passes through ceiling. 10" to 8" adapter included with in-line and external blowers

DESIGNER COLLECTION



LAYERS WALL

LAYERS	Designer Wall Hood w/ LED Lighting - BODY ONLY*			
ALA-M90BBX	S w/ B Glass	35-3/8" x 22"	\$1,999	\$2,199
SO ALA-M90BWX	S w/ W Glass	35-3/8" x 22"	\$1,999	\$2,199
SO ALA-E42BBX	S w/ B Glass	42" x 22"	\$2,299	\$2,499
SO ALA-E42BWX	S w/ W Glass	42" x 22"	\$2,299	\$2,499
<ul style="list-style-type: none"> <li>•Max. Blower CFM: 290-1,000 (not included)</li> <li>•Sones: 1.4-6 (depends on blower)</li> <li>•3 speed capacitive touch controls</li> <li>•CleanAir function</li> <li>•6" or 8" round vertical ducting</li> <li>•Decorative mesh filters</li> <li>•Accommodates 10'2" ceiling height</li> <li>•6W LED light strips</li> <li>•Tri-level lighting</li> <li>•Wireless remote control</li> </ul>				
<b>Accessories and Blowers</b>				
ZRC-01LA	Recirculating Kit (w/ charcoal filter)			\$ 49.99
Z0F-01AC	Charcoal Filter Replacement (each)			\$ 19.99
Z1C-00LA	Duct Cover Extension (For up to 12' ceiling)			\$ 199.00
CBI-290A	290 CFM Internal Blower (6" round duct)			\$ 189.00
CBI-600A	600 CFM Internal Blower (6" round duct)			\$ 219.00
PBN-1000A	1,000 CFM In-line Blower (8" round duct**)			\$ 699.00
CBE-1000	1,000 CFM External Blower (8" round duct**)			\$ 799.00
RED006	Airflow Reducer, reduces 25 CFM (for CBI-600)			\$ 19.99
MUA006A	Make-Up Air Kit (600 CFM)			\$ 189.00
MUA008A	Make-Up Air Kit (1,000 CFM)			\$ 199.00

\*Requires purchase of Zephyr internal, external or in-line blower, sold separately.  
 \*\*10" round duct connects to external or in-line blower. Must transition from 10" to 8" before duct passes through ceiling. 10" to 8" adapter included with in-line and external blowers

Finish: (S)-Stainless Steel (B Glass)-Black Glass (W Glass)-White Glass  
 Warranty: 1 year non-consumable parts, 1 year labor

All prices, models, and specifications are subject to change without notice.  
 Please call to verify pricing and availability.  
 DEC19.0101

WALL



DESIGNER COLLECTION

OKEANITO

MODEL	FINISH	SIZE W x D	MAP	MSRP
<b>OKEANITO</b> Designer Wall Hood w/ LED Lighting - BODY ONLY*				
COK-E36BSX	S	36" x 22-3/4"	\$2,849	\$3,049
<b>SO</b> COK-E42BSX	S	42" x 22-3/4"	\$3,299	\$3,499
<b>SO</b> COK-E48BSX	S	48" x 22-3/4"	\$4,069	\$4,349

- |   |  |   |
|---|--|---|
| <ul style="list-style-type: none"> <li>•Max. Blower CFM: 290-1,000 (not included)</li> <li>•Sones: 1.4-6 (depends on blower)</li> <li>•3 speed electronic controls</li> <li>•Accommodates 10'1" ceiling height</li> </ul> | <ul style="list-style-type: none"> <li>•6" or 8" round vertical ducting</li> <li>•Auto delay-off</li> <li>•Pro baffle filters</li> <li>•CleanAir function</li> </ul> | <ul style="list-style-type: none"> <li>•Bloom™ HD LED lights</li> <li>•Dual-level lighting</li> <li>•40W ambient lights</li> <li>•Wireless remote option</li> </ul> |
|---|--|---|

\*Requires purchase of Zephyr blower, sold separately.

Accessories and Blowers		
Z1C-00OK	Duct Cover Extension (For up to a 12' ceiling)	\$ 419.00
Z0B0035	Ambient Incandescent Bulb (E26 T10 40W 120V)	\$ 8.99
CBI-290A	290 CFM Internal Blower (6" round duct)	\$ 189.00
CBI-600A	600 CFM Internal Blower (6" round duct)	\$ 219.00
PBN-1000A	1,000 CFM In-Line Blower (10" to 8" round duct**)	\$ 699.00
CBE-1000	1,000 CFM External Blower (10" or 8" round duct**)	\$ 799.00
14000005	RF Wireless Remote Control	\$ 99.00
RED006	Airflow Reducer, reduces 25 CFM (for CBI-600)	\$ 19.99
MUA006A	Make-Up Air Kit (600 CFM)	\$ 189.00
MUA008A	Make-Up Air Kit (1,000 CFM)	\$ 199.00

\*\*10" round duct connects to external/in-line blower. Must transition from 10" to 8" before duct passes through ceiling. 10" to 8" adapter included with external/in-line blower.

Finish: (S)-Stainless Steel  
 Warranty: 3 years non-consumable parts, 1 year labor

All prices, models, and specifications are subject to change without notice.  
 Please call to verify pricing and availability.  
 DEC19.0101

WALL

DESIGNER COLLECTION



INCLINE

MODEL	FINISH	SIZE W x D	MAP	MSRP
<b>INCLINE</b> Designer Wall Hood w/ Perimeter Aspiration and LED Lighting - BODY ONLY*				
SO AIN-M80ASX	S	31-1/2" x 16-5/16"	\$ 999	\$1,149
SO AIN-M80AWX	W w/ S	31-1/2" x 16-5/16"	\$ 999	\$1,149
<ul style="list-style-type: none"> <li>•Max. Blower CFM: 290-1,000 (not included)</li> <li>•Sones: 1.4-6 (depends on blower)</li> <li>•3 speed capacitive touch controls</li> <li>•CleanAir function</li> </ul>		<ul style="list-style-type: none"> <li>•6" or 8" round vertical ducting</li> <li>•6" or 8" round horizontal ducting</li> <li>•Wireless remote control</li> </ul>	<ul style="list-style-type: none"> <li>•8.5W LED light strip</li> <li>•Tri-level lighting</li> <li>•Dual filtration</li> </ul>	
<b>Accessories and Blowers</b>				
ZRC-00IN	Recirculating Kit (w/ charcoal filters)			\$ 99.00
ZOF-02AC	Charcoal Filter Replacement (2pk)			\$ 39.99
Z1C-00IN	Duct Cover (For up to 10' ceiling)			\$ 149.00
CBI-290A	290 CFM Internal Blower (6" round duct)			\$ 189.00
CBI-600A	600 CFM Internal Blower (6" round duct)			\$ 219.00
PBN-1000A	1,000 CFM In-line Blower (8" round duct**)			\$ 699.00
CBE-1000	1,000 CFM External Blower (8" round duct**)			\$ 799.00
RED006	Airflow Reducer, reduces 25 CFM (for CBI-600)			\$ 19.99
MUA006A	Make-Up Air Kit (600 CFM)			\$ 189.00
MUA008A	Make-Up Air Kit (1,000 CFM)			\$ 199.00

\*Requires purchase of Zephyr internal, external or in-line blower, sold separately.

\*\*10" round duct connects to external or in-line blower. Must transition from 10" to 8" before duct passes through ceiling. 10" to 8" adapter included with in-line and external blowers

DESIGNER COLLECTION



WAVE

MODEL	FINISH	SIZE W x D	MAP	MSRP
<b>WAVE</b> Designer Wall Hood w/ Dual Capture Zones and LED Lighting- BODY ONLY*				
SO AWA-M90ABX	B Glass	35-7/16" x 16-1/4"	\$1,699	\$1,899
SO AWA-M90AWX	W Glass	35-7/16" x 16-1/4"	\$1,699	\$1,899
<ul style="list-style-type: none"> <li>•Max. Blower CFM: 290-1,000 (not included)</li> <li>•Sones: 1.4-6 (depends on blower)</li> <li>•3 speed capacitive touch controls</li> <li>•CleanAir function</li> </ul>		<ul style="list-style-type: none"> <li>•6" or 8" round vertical ducting</li> <li>•6" or 8" round horizontal ducting</li> <li>•Wireless remote control</li> </ul>	<ul style="list-style-type: none"> <li>•8.5W LED light strip</li> <li>•Tri-level lighting</li> <li>•Dual capture zones</li> </ul>	
<b>Accessories and Blowers</b>				
ZRC-00WA	Recirculating Kit (w/ charcoal filter)			\$ 99.00
ZOF-01AC	Charcoal Filter Replacement (each)			\$ 19.99
Z1C-00IN	Duct Cover (For up to 10' ceiling)			\$ 149.00
CBI-290A	290 CFM Internal Blower (6" round duct)			\$ 189.00
CBI-600A	600 CFM Internal Blower (6" round duct)			\$ 219.00
PBN-1000A	1,000 CFM In-line Blower (8" round duct**)			\$ 699.00
CBE-1000	1,000 CFM External Blower (8" round duct**)			\$ 799.00
RED006	Airflow Reducer, reduces 25 CFM (for CBI-600)			\$ 19.99
MUA006A	Make-Up Air Kit (600 CFM)			\$ 189.00
MUA008A	Make-Up Air Kit (1,000 CFM)			\$ 199.00

\*Requires purchase of Zephyr internal, external or in-line blower, sold separately.

\*\*10" round duct connects to external or in-line blower. Must transition from 10" to 8" before duct passes through ceiling. 10" to 8" adapter included with in-line and external blowers

**DID YOU KNOW** Incline and Wave can be ducted vertically or horizontally and also share the same optional duct cover.

Finish: (S)-Stainless Steel (W)-Powder Coated White (B Glass)-Black Glass (W Glass)-White Glass  
 Warranty: 1 years non-consumable parts, 1 year labor

All prices, models, and specifications are subject to change without notice.  
 Please call to verify pricing and availability.  
 DEC19.0101

ISLAND



CORE COLLECTION

ROMA ISLAND  
ACT™

MODEL	FINISH	SIZE W x D	MAP	MSRP
<b>ROMA IS.</b> 600 CFM Contemporary Island Hood w/ Airflow Control Technology (ACT™)				
ZRM-E36DS	S	36" x 27"	\$1,199	\$1,299
ZRM-E42DS	S	42" x 27"	\$1,299	\$1,399
<ul style="list-style-type: none"> <li>•Max. Blower CFM: 600</li> <li>•ACT Max. Blower CFM: 390, 290</li> <li>•Sones: 1-6</li> <li>•Quick-lock installation with magnetic duct covers</li> </ul>		<ul style="list-style-type: none"> <li>•5 speed ICON Touch® controls</li> <li>•6" round vertical ducting</li> <li>•Accommodates 9'1" ceiling height</li> </ul>	<ul style="list-style-type: none"> <li>•BriteStrip™ LED Lighting (3000K)</li> <li>•Dual-level lighting</li> <li>•Auto delay-off</li> </ul>	
<b>Accessories</b>				
ZRC-02RM	Recirculating Kit (w/ charcoal filters)			\$ 79.00
ZOF-C002	Charcoal Filter Replacement (each)			\$ 14.99
Z1C-01RM	Duct Cover Extension (For up to a 12' ceiling)			\$ 369.00
RED006	Airflow Reducer, reduces 25 CFM			\$ 19.99
MUA006A	Make-Up Air Kit			\$ 189.00



CORE COLLECTION

ANZIO ISLAND  
ACT™

MODEL	FINISH	SIZE W x D	MAP	MSRP
<b>ANZIO IS.</b> 600 CFM Low-Profile Modern Island Hood w/ Airflow Control Technology (ACT™)				
ZAZ-M90CS	S	35-7/16" x 25-9/16"	\$1,349	\$1,449
ZAZ-E42CS	S	42" x 25-9/16"	\$1,449	\$1,549
<ul style="list-style-type: none"> <li>•Max. Blower CFM: 600</li> <li>•ACT Max. Blower CFM: 390, 290</li> <li>•Sones: 1-6</li> <li>•Quick-lock installation with magnetic duct covers</li> </ul>		<ul style="list-style-type: none"> <li>•5 speed ICON Touch® controls</li> <li>•6" round vertical ducting</li> <li>•Accommodates 10' ceiling height</li> </ul>	<ul style="list-style-type: none"> <li>•BriteStrip™ LED Lighting (3000K)</li> <li>•Dual-level lighting</li> <li>•Auto delay-off</li> </ul>	
<b>Accessories</b>				
ZRC-02AZ	Recirculating Kit			\$ 99.00
ZOF-C091	Charcoal Filter Replacement (each)			\$ 14.99
Z1C-00AZ	Duct Cover Extension (For up to a 12' ceiling)			\$ 309.00
RED006	Airflow Reducer, reduces 25 CFM			\$ 19.99
MUA006A	Make-Up Air Kit			\$ 189.00
ZOF-B002	Hybrid Baffle Filter Kit (2 filters)			\$ 79.00



CORE COLLECTION

RAVENNA ISLAND  
ACT™

MODEL	FINISH	SIZE W x D	MAP	MSRP
<b>RAVENNA IS.</b> 600 CFM Black Stainless Steel Island Hood w/ Smoke Gray Glass Canopy				
ZRE-M90ABSGG	Blk SS	35-3/16" x 25-9/16"	\$1,599	\$1,699
ZRE-E42ABSGG	Blk SS	42" x 25-9/16"	\$1,699	\$1,799
<ul style="list-style-type: none"> <li>•Max. Blower CFM: 600</li> <li>•ACT Max. Blower CFM: 390, 290</li> <li>•Sones: 1-6</li> <li>•Quick-lock installation with magnetic duct covers</li> </ul>		<ul style="list-style-type: none"> <li>•5 speed ICON Touch® controls</li> <li>•6" round vertical ducting</li> <li>•Accommodates 9' ceiling height</li> </ul>	<ul style="list-style-type: none"> <li>•BriteStrip™ LED Lighting (3000K)</li> <li>•Dual-level lighting</li> <li>•Auto delay-off</li> </ul>	
<b>Accessories</b>				
ZRC-00RE	Recirculating Kit (w/ charcoal filters)			\$ 99.00
ZOF-C002	Charcoal Filter Replacement (each)			\$ 14.99
Z1C-00REBS	Duct Cover Extension (For up to a 12' ceiling)			\$ 699.00
RED006	Airflow Reducer, reduces 25 CFM			\$ 19.99
MUA006A	Make-Up Air Kit			\$ 189.00

**DID YOU KNOW** Zephyr island hoods with Quick-lock installation are the easiest island hoods to install in the market.

Finish: (S)-Stainless Steel (Blk SS)-Black Stainless Steel w/ Smoke Gray Glass  
Warranty: 3 years non-consumable parts, 1 year labor

All prices, models, and specifications are subject to change without notice.  
Please call to verify pricing and availability.  
DEC19.0101

ISLAND

CORE COLLECTION



LUCÉ ISLAND  
ACT™

MODEL	FINISH	SIZE W x D	MAP	MSRP
<b>LUCÉ IS. 600 CFM Island Hood w/ LED Accent Lighting &amp; Airflow Control Technology (ACT™)</b>				
ZLC-M90BS	S	35-7/16" x 25-9/16"	\$1,599	\$1,749
ZLC-E42BS	S	42" x 25-9/16"	\$1,699	\$1,849

- Max. Blower CFM: 600
- ACT Max. Blower CFM: 390, 290
- Sones: 1-6
- Quick-lock installation with magnetic duct covers
- 5 speed ICON Touch® controls
- 6" round vertical ducting
- Accommodates 9'8" ceiling height
- BriteStrip™ LED Lighting (3000K)
- Dual-level lighting
- Auto delay-off

**Accessories**

ZRC-00LC	Recirculating Kit (w/ charcoal filters)	\$ 99.00
Z0F-C092	Charcoal Filter Replacement (each)	\$ 14.99
Z1C-00LC	Duct Cover Extension (For up to a 12' ceiling)	\$ 399.00
RED006	Airflow Reducer, reduces 25 CFM	\$ 19.99
MUA006A	Make-Up Air Kit	\$ 189.00

Lucé island illuminates in cloud white, deep blue and amber.

CORE COLLECTION



MILANO ISLAND  
DCBL™ SUPPRESSION SYSTEM™ ACT™

MODEL	FINISH	SIZE W x D	MAP	MSRP
<b>MILANO IS. 715 CFM Curved Canopy Island Hood w/ DCBL Suppression System® &amp; ACT™</b>				
ZML-M90BG	S w/ Glass	35-7/16" x 25-9/16"	\$1,759	\$1,889
ZML-M90BS	S	35-7/16" x 25-9/16"	\$1,759	\$1,889
ZML-E42BG	S w/ Glass	42" x 25-9/16"	\$1,949	\$2,099
ZML-E42BS	S	42" x 25-9/16"	\$1,949	\$2,099

- Max. Blower CFM: 715
- ACT Max. Blower CFM: 590, 390, 290
- Sones: 0.8-5.8
- CleanAir function
- 6 speed LCD controls
- 8" round vertical ducting
- Accommodates 10' ceiling height
- Quick-lock installation with magnetic duct covers
- Bloom™ HD LED lights
- Dual-level lighting
- Auto delay-off

**Accessories**

ZRC-00ML	Recirculating Kit (w/ charcoal filters)	\$ 79.00
Z0F-C002	Charcoal Filter Replacement (each)	\$ 14.99
Z1C-03ML	Duct Cover Extension (For up to a 12' ceiling)	\$ 399.00
RC-0001	RF Wireless Remote Control Kit	\$ 129.00
MUA008A	Make-Up Air Kit	\$ 199.00

CORE COLLECTION



MODENA ISLAND  
DCBL™ SUPPRESSION SYSTEM™ ACT™

MODEL	FINISH	SIZE W x D	MAP	MSRP
<b>MODENA IS. 715 CFM Thin Profile Island Hood w/ DCBL Suppression System® &amp; ACT™</b>				
ZMD-M90AS	S	35-7/16" x 27-1/2"	\$1,849	\$1,989
<b>SO</b> ZMD-E42AS	S	42" x 27-1/2"	\$1,949	\$2,099

- Max. Blower CFM: 715
- ACT Max. Blower CFM: 590, 390, 290
- Sones: 0.8-5.8
- CleanAir function
- 6 speed LCD controls
- 8" round vertical ducting
- Accommodates 10' ceiling height
- Quick-lock installation with magnetic duct covers
- Bloom™ HD LED lights
- Dual-level lighting
- Auto delay-off

**Accessories**

ZRC-00MD	Recirculating Kit (w/ charcoal filter)	\$ 79.00
Z0F-C002	Charcoal Filter Replacement (each)	\$ 14.99
Z1C-00MD	Duct Cover Extension (For up to a 12' ceiling)	\$ 399.00
RC-0001	RF Wireless Remote Control Kit	\$ 129.00
MUA008A	Make-Up Air Kit	\$ 199.00

Finish: (S)-Stainless Steel

Warranty: 3 years non-consumable parts, 1 year labor

All prices, models, and specifications are subject to change without notice. Please call to verify pricing and availability. DEC19.0101

ISLAND

DESIGNER COLLECTION



DUO ISLAND

MODEL	FINISH	SIZE W x D	MAP	MSRP
<b>DUO IS.</b> Designer Island Hood w/ LED Lighting - BODY ONLY*				
SO ADL-M90BSX	S	35-3/8" x 23-5/8"	\$1,899	\$2,099
SO ADL-E42BSX	S	42" x 23-5/8"	\$2,099	\$2,299

- Max. Blower CFM: 290-1,000 (not included)
- Sones: 1.4-6 (depends on blower)
- 3 speed capacitive touch controls
- Accommodates 10'1" ceiling height
- 6" or 8" round vertical ducting
- Decorative mesh filters
- Wireless remote control
- CleanAir function
- 8.5W LED light strips
- Tri-level lighting
- Quick-lock installation

Accessories and Blowers				
ZRC-01LL	Recirculating Kit (w/ charcoal filters)			\$ 49.99
ZOF-01AC	Charcoal Filter Replacement (each)			\$ 19.99
Z1C-02LL	Duct Cover Extension (For up to 12' ceiling)			\$ 599.00
CBI-290A	290 CFM Internal Blower (6" round duct)			\$ 189.00
CBI-600A	600 CFM Internal Blower (6" round duct)			\$ 219.00
PBN-1000A	1,000 CFM In-line Blower (8" round duct**)			\$ 699.00
CBE-1000	1,000 CFM External Blower (8" round duct**)			\$ 799.00
RED006	Airflow Reducer, reduces 25 CFM (for CBI-600)			\$ 19.99
MUA006A	Make-Up Air Kit (600 CFM)			\$ 189.00
MUA008A	Make-Up Air Kit (1,000 CFM)			\$ 199.00

\*Requires purchase of Zephyr internal, external or in-line blower, sold separately.  
 \*\*10" round duct connects to external or in-line blower. Must transition from 10" to 8" before duct passes through ceiling. 10" to 8" adapter included with in-line and external blowers

CORE COLLECTION



NAPOLI

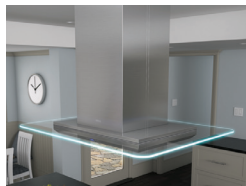


<b>NAPOLI IS.</b> 715 CFM Island Hood w/ DCBL Suppression System®, ACT™ & Baffle Filters				
ZNA-M90CS	S	35-7/16" x 25-9/16"	\$1,999	\$2,149
ZNA-E42CS	S	42" x 25-9/16"	\$2,099	\$2,249

- Max. Blower CFM: 715
- ACT Max. Blower CFM: 590, 390, 290
- Sones: 0.8-5.8
- Baffle filters
- 6 speed LCD controls
- 8" round vertical ducting
- Accommodates 10' ceiling height
- CleanAir function
- Bloom™ HD LED lights
- Dual-level lighting
- Auto delay-off
- Quick-lock installation with magnetic duct covers

Accessories				
ZRC-02NA	Recirculating Kit (w/ charcoal filters)			\$ 99.00
ZOF-C091	Charcoal Filter Replacement (each)			\$ 19.99
Z1C-02NA	Duct Cover Extension (For up to a 12' ceiling)			\$ 399.00
RC-0001	RF Wireless Remote Control Kit			\$ 129.00
MUA008A	Make-Up Air Kit			\$ 199.00

CORE COLLECTION



VERONA ISLAND



<b>VERONA IS.</b> 715 CFM LED Illuminated Glass Island Hood w/ DCBL Suppression System® & ACT™				
ZVN-M90AG	S w/ Glass	35-7/16" x 27-7/16"	\$1,999	\$2,149
ZVN-E42AG	S w/ Glass	42" x 27-7/16"	\$2,099	\$2,249

- Max. Blower CFM: 715
- ACT Max. Blower CFM: 590, 390, 290
- Sones: 0.8-5.8
- CleanAir function
- 6 speed LCD controls
- 8" round vertical ducting
- Accommodates 10' ceiling height
- 3 color LED illuminated glass
- Bloom™ HD LED lights
- Dual-level lighting
- Auto delay-off
- Quick-lock installation with magnetic duct covers

Accessories				
ZRC-00VN	Recirculating Kit (w/ charcoal filters)			\$ 79.00
ZOF-C002	Charcoal Filter Replacement (each)			\$ 14.99
Z1C-00VN	Duct Cover Extension (For up to a 12' ceiling)			\$ 399.00
RC-0001	RF Wireless Remote Control Kit			\$ 129.00
MUA008A	Make-Up Air Kit			\$ 199.00

Verona Island glass illuminates in cloud white, deep blue and amber.

Finish: (S)-Stainless Steel

Warranty: 1 year non-consumable parts, 1 year labor (ADL) 3 years non-consumable parts, 1 year labor (ZNA, ZVN)

All prices, models, and specifications are subject to change without notice. Please call to verify pricing and availability. DEC19.0101

ISLAND



CORE COLLECTION

SIENA PRO ISLAND  
ACT™

MODEL	FINISH	SIZE W x D	MAP	MSRP
<b>SIENA PRO IS.</b> 1,200 CFM Traditional Pro Island Hood w/ Hybrid Baffle Filters & ACT™				
ZSL-E42BS	S	42" x 28"	\$2,149	\$2,349
ZSL-E48BS	S	48" x 28"	\$2,249	\$2,449
<ul style="list-style-type: none"> <li>•Max. Blower CFM: 1,200</li> <li>•ACT Max. Blower CFM: 590, 390</li> <li>•Sones: 3.5-9</li> <li>•Auto delay-off</li> </ul>		<ul style="list-style-type: none"> <li>•5 speed ICON Touch® controls</li> <li>•10" round vertical ducting</li> <li>•Accommodates 9'10" ceiling height</li> <li>•Quick-lock installation with magnetic duct covers</li> </ul>	<ul style="list-style-type: none"> <li>•BriteStrip™ LED Lighting (3000K)</li> <li>•Dual-level lighting</li> <li>•Hybrid baffle filters</li> </ul>	
<b>Accessories</b>				
Z1C-01SL	Duct Cover Extension (For up to a 12' ceiling)			\$ 499.00
MUA010A	Make-Up Air Kit			\$ 249.00



DESIGNER COLLECTION

LAYERS ISLAND

MODEL	FINISH	SIZE W x D	MAP	MSRP
<b>LAYERS IS.</b> Designer Island Hood w/ LED Lighting- BODY ONLY*				
SO ALL-M90BBX	S w/ Black Glass	35-3/8" x 26"	\$2,499	\$2,699
SO ALL-M90BWX	S w/ White Glass	35-3/8" x 26"	\$2,499	\$2,699
ALL-E42BBX	S w/ Black Glass	42" x 26"	\$2,799	\$2,999
SO ALL-E42BWX	S w/ White Glass	42" x 26"	\$2,799	\$2,999
<ul style="list-style-type: none"> <li>•Max. Blower CFM: 290-1,000 (not included)</li> <li>•Sones: 1.4-6 (depends on blower)</li> <li>•3 speed capacitive touch controls</li> <li>•Accommodates 10'2" ceiling height</li> </ul>		<ul style="list-style-type: none"> <li>•6" or 8" round vertical ducting</li> <li>•Decorative mesh filters</li> <li>•Wireless remote control</li> <li>•CleanAir function</li> </ul>	<ul style="list-style-type: none"> <li>•6W LED light strips</li> <li>•Tri-level lighting</li> <li>•Quick-lock installation</li> </ul>	
<b>Accessories and Blowers</b>				
ZRC-01LL	Recirculating Kit (w/ charcoal filters)			\$ 49.99
ZOF-01AC	Charcoal Filter Replacement (each)			\$ 19.99
Z1C-02LL	Duct Cover Extension (For up to 12' ceiling)			\$ 599.00
CBI-290A	290 CFM Internal Blower (6" round duct)			\$ 189.00
CBI-600A	600 CFM Internal Blower (6" round duct)			\$ 219.00
PBN-1000A	1,000 CFM In-line Blower (8" round duct**)			\$ 699.00
CBE-1000	1,000 CFM External Blower (8" round duct**)			\$ 799.00
RED006	Airflow Reducer, reduces 25 CFM (for CBI-600)			\$ 19.99
MUA006A	Make-Up Air Kit (600 CFM)			\$ 189.00
MUA008A	Make-Up Air Kit (1,000 CFM)			\$ 199.00

\*Requires purchase of Zephyr internal, external or in-line blower, sold separately.

\*\*10" round duct connects to external or in-line blower. Must transition from 10" to 8" before duct passes through ceiling. 10" to 8" adapter included with in-line and external blowers

Finish: (S)-Stainless Steel

Warranty: 3 years non-consumable parts, 1 year labor (ZSL) 1 year non-consumable parts, 1 year labor (ALL)

All prices, models, and specifications are subject to change without notice. Please call to verify pricing and availability. DEC19.0101

ISLAND



PRO COLLECTION

TITAN ISLAND  
ACT

MODEL	FINISH	SIZE W x D	MAP	MSRP
<b>TITAN IS. 750 CFM Pro-Style Chimney Island Hood w/ Powerwave™ Blower &amp; LED Lights</b>				
AK7736AS	S	36" x 31-5/8"	\$2,799	\$2,999
AK7742AS	S	42" x 31-5/8"	\$2,899	\$3,099
AK7748AS	S	48" x 31-5/8"	\$3,399	\$3,599
<ul style="list-style-type: none"> <li>•Max. Blower CFM: 750 (included)</li> <li>•Max. Blower CFM: 1,300 (optional)</li> <li>•ACT Max. Blower CFM: 590, 390, 290</li> <li>•Auto delay-off</li> </ul>		<ul style="list-style-type: none"> <li>•8" or 10" round vertical &amp; horizontal ducting</li> <li>•Dual-level lighting</li> <li>•Accommodates 10'2" ceiling height</li> <li>•Directional lighting</li> </ul>	<ul style="list-style-type: none"> <li>•6W Bloom™ GU10 LED lights</li> <li>•Pro baffle filters</li> <li>•6 speed LCD controls</li> <li>•Wireless remote option</li> </ul>	
<b>Accessories</b>				
PBD-1300A	1,300 CFM Internal Blower Kit (10" round duct)			\$ 399.00
Z1C-0077	Duct Cover Extension - 36", 42" (For a 10'-12' ceiling)			\$ 649.00
Z1C-0177	Duct Cover Extension - 48" (For a 10'-12' ceiling)			\$ 699.00
14000005	RF Wireless Remote Control			\$ 99.00
MUA008A	Make-Up Air Kit (750 CFM)			\$ 199.00
MUA010A	Make-Up Air Kit (1,300 CFM)			\$ 249.00



DESIGNER COLLECTION

TRAPEZE

<b>TRAPEZE</b>		Designer Island Hood - BODY ONLY*		
SO CTP-E48BSX	S	48" x 26-5/8"	\$4,289	\$4,589
SO CTP-E54BSX	S	54" x 26-5/8"	\$5,279	\$5,649
SO CTP-E60BSX	S	60" x 26-5/8"	\$5,839	\$6,249
<ul style="list-style-type: none"> <li>•Max. Blower CFM: 290-1,000 (not included)</li> <li>•Sones: 1.4-6 (depends on blower)</li> <li>•3 speed electronic controls</li> <li>•Accommodates 10'4" ceiling height</li> </ul>		<ul style="list-style-type: none"> <li>•6" or 8" round vertical ducting</li> <li>•Auto delay-off</li> <li>•Pro baffle filters</li> </ul>	<ul style="list-style-type: none"> <li>•Bloom™ HD LED lights</li> <li>•Dual-level lighting</li> <li>•Wireless remote option</li> </ul>	

\* Requires purchase of Zephyr blower, sold separately.

<b>Accessories and Blowers</b>				
Z1C-00TP	Duct Cover Extension (For up to a 12' ceiling)			\$ 889.00
CBI-290A	290 CFM Internal Blower (6" round duct)			\$ 189.00
CBI-600A	600 CFM Internal Blower (6" round duct)			\$ 219.00
PBN-1000A	1,000 CFM In-Line Blower (10" to 8" round duct**)			\$ 699.00
CBE-1000	1,000 CFM External Blower (10" or 8" round duct**)			\$ 799.00
14000005	RF Wireless Remote Control			\$ 99.00
RED006	Airflow Reducer, reduces 25 CFM (for CBI-600)			\$ 19.99
MUA006A	Make-Up Air Kit (600 CFM)			\$ 189.00
MUA008A	Make-Up Air Kit (1,000 CFM)			\$ 199.00

\*\*10" round duct connects to external/in-line blower. Must transition from 10" to 8" before duct passes through ceiling. 10" to 8" adapter included with external/in-line blower.

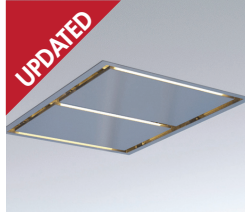
Finish: (S)-Stainless Steel

Warranty: 3 years non-consumable parts, 1 year labor

All prices, models, and specifications are subject to change without notice. Please call to verify pricing and availability. DEC19.0101

IN-CEILING

DESIGNER COLLECTION



LUX

TOP: 43" model shown in stainless steel

BOTTOM: 63" model shown in white

MODEL	FINISH	SIZE W x D	MAP	MSRP
<b>LUX Designer In-Ceiling Hood w/ Perimeter Aspiration and LED Lighting - BODY ONLY</b>				
SO ALU-E43BSX	S	43-3/8" x 27-1/2"	\$1,799	\$1,999
SO ALU-E43BWX	W	43-3/8" x 27-1/2"	\$1,799	\$1,999
SO ALU-E63BSX	S	63-3/8" x 27-1/2"	\$2,399	\$2,599
SO ALU-E63BWX	W	63-3/8" x 27-1/2"	\$2,399	\$2,599

- Max. Blower CFM: 290-1,100 (not included)
- Sones: 1.4-8 (depends on blower)
- 3 speed capacitive touch controls
- CleanAir function
- Perimeter aspiration
- 6" or 10" round ducting
- Vertical and horizontal ducting
- 10W LED light strips
- Tri-level lighting
- Wireless remote control

Accessories and Blowers			
ZRC-01LX*	Recirculating Kit (w/ charcoal filters)		\$ 199.00
ZOF-C002	Charcoal Filter Replacement (each)		\$ 14.99
CBI-290A	290 CFM Internal Blower (6" round duct)		\$ 189.00
CBI-600A	600 CFM Internal Blower (6" round duct)		\$ 219.00
PBI-1100A	1,100 CFM Internal Blower (10" round duct)		\$ 369.00
PBN-1000A	1,000 CFM In-line Blower (10" round duct)		\$ 699.00
CBE-1000	1,000 CFM External Blower (10" round duct)		\$ 799.00
RED006	Airflow Reducer, reduces 25 CFM (for CBI-600A)		\$ 19.99
MUA006A	Make-Up Air Kit (600 CFM)		\$ 189.00
MUA008A	Make-Up Air Kit (1,000 CFM)		\$ 199.00
MUA010A	Make-Up Air Kit (1,100 CFM)		\$ 249.00

\*ZRC-01LX recirculating kit is compatible with CBI-290A and CBI-600A internal blowers only.

**DID YOU KNOW** Lux uses perimeter aspiration to improve airflow by increasing air velocity around the edges of the stainless steel panels.

Finish: (S)-Stainless Steel (W)-Powder Coated White  
 Warranty: 1 year non-consumable parts, 1 year labor

All prices, models, and specifications are subject to change without notice.  
 Please call to verify pricing and availability.  
 DEC19.0101

Effective January, 2020

# ZEPHYR

DOWNDRAFT

DESIGNER COLLECTION



LIFT DOWNDRAFT

MODEL	FINISH	WIDTH	MAP	MSRP
<b>LIFT</b> 18" Chimney Rise Downdraft Hood				
DLI-E30ASX	S	30"	\$ 1,699	\$ 1,799
DLI-E36ASX	S	36"	\$ 1,799	\$ 1,899
•Max. Blower CFM: 600-1,000 (not included)		•4-way ducting*	•BriteStrip™ LED lighting (3000K)	
•Tri-capture zones		•18" chimney rise	•Dual-level lighting	
•3 speed capacitive touch controls		•Aluminum mesh filters	•Recirculating option	
<b>Accessories</b>				
ZRC-00LF	Recirculating Kit (w/ charcoal filters)			\$ 159.00
ZOF-C006	Charcoal Filter Replacement (each)			\$ 29.99
DDA-0002	Wired Remote Up/Down Control			\$ 99.99
DBI-600A	600 CFM Internal Blower			\$ 269.00
PBN-1000A	1,000 CFM In-line Blower			\$ 699.00
CBE-1000	1,000 CFM External Blower			\$ 799.00
DDS-0030	Gas Cooktop Seal Kit (For DLI-E30ASX)			\$ 49.99
DDS-0036	Gas Cooktop Seal Kit (For DLI-E36ASX)			\$ 49.99
DDT-0030	Range Trim Kit (For DLI-E30ASX)			\$ 49.99
DDT-0036	Range Trim Kit (For DLI-E30ASX)			\$ 49.99
11030132	5' Extension Cable			\$ 49.99
DDE-0001	End Cap Trim Extension			\$ 69.99
54190053	Front Panel Rough-In Plate, 8"			\$ 39.99
54190054	Front Panel Rough-In Plate, 10"			\$ 39.99
AK00070	Rectangular to 8" Round Transition			\$ 99.99
AK00071	Rectangular to 10" Round Transition			\$ 99.99
AK00072	1-7/8" x 19" Adapter for AK00080 Duct			\$ 39.99
AK00080	2' Rectangular Duct Extension			\$ 59.99
MUA006A	Make-Up Air Kit (600 CFM)			\$ 189.00
MUA008A	Make-Up Air Kit (1,000 CFM)			\$ 199.00

\*4-Way Ducting includes the front, side (L & R), rear and bottom of blower housing.

**DID YOU KNOW** Lift is compatible with multiple cooking appliance configurations.



COOKTOP



OVEN + COOKTOP



RANGE TOP



RANGE

Check out the Lift Downdraft Configurator on our website to help determine what components are needed for installation.

CORE COLLECTION



SORRENTO DOWNDRAFT

MODEL	FINISH	WIDTH	MAP	MSRP
<b>SORRENTO</b> 500 CFM Downdraft Hood w/ 9-1/2" Rise				
DD1-E30AS	S	30"	\$ 899	\$ 929
DD1-E36AS	S	36"	\$ 929	\$ 959
•Max. Blower CFM: 500		•HVI certified	•3-1/4"x10" three position ducting*	
•Sones NA		•Variable speed controls	•Decorative mesh filters	
<b>Accessories</b>				
DDA-0001	Wired Remote Up/Down Control			\$ 44.99
MUA006A	Make-Up Air Kit			\$ 189.00

\*Three position ducting includes the left, right, or bottom of blower housing.

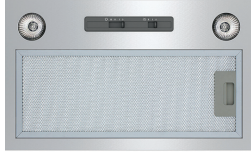
Finish: (S)-Stainless Steel

Warranty: 2 years non-consumable parts, 1 year labor

All prices, models, and specifications are subject to change without notice. Please call to verify pricing and availability. DEC19.0101

INSERT

CORE COLLECTION



TORNADO MINI

MODEL	FINISH	SIZE W x D	MAP	MSRP
<b>TORNADO MINI 290 CFM Power Pack w/ Recirculating Option</b>				
AK8400AS	S	20-9/16" x 11"	\$ 269	\$ 299
<ul style="list-style-type: none"> <li>•Max. Blower CFM: 290</li> <li>•Sones: 1.3-3.2</li> <li>•3 speed slide controls</li> </ul>		<ul style="list-style-type: none"> <li>•6" round vertical ducting</li> <li>•Insert height 9-11/16"</li> <li>•Stainless steel liner option</li> </ul>	<ul style="list-style-type: none"> <li>•35W halogen lights</li> <li>•Dual-level lighting</li> </ul>	
<b>Accessories</b>				
ZRC-8400A	Recirculating Kit (w/ charcoal filters)			\$ 24.99
ZOF-C084	Charcoal Filter Replacement (each)			\$ 14.99
AK0840AS	17-1/2" - 20-1/2" Depth SS Liner (For 30" hood)			\$ 129.00
AK0846AS	17-1/2" - 20-1/2" Depth SS Liner (For 36" hood)			\$ 149.00
ZOB0023	Halogen Bulb (GU10 35W 120V)			\$ 10.99
ZOB0040	Bloom™ GU10 LED (6W, 3000K)			\$ 14.99

CORE COLLECTION



TWISTER

MODEL	FINISH	SIZE W x D	MAP	MSRP
<b>TWISTER 400 CFM Power Pack w/ Recirculating Option</b>				
AK8000BS	S	27-9/16" x 11-13/16"	\$ 329	\$ 349
<ul style="list-style-type: none"> <li>•Max. Blower CFM: 400</li> <li>•Sones: 2-5</li> <li>•3 speed slide controls</li> </ul>		<ul style="list-style-type: none"> <li>•6" round vertical ducting</li> <li>•Insert height 10-1/4"</li> <li>•Stainless steel liner option</li> </ul>	<ul style="list-style-type: none"> <li>•35W halogen lights</li> <li>•Dual-level lighting</li> </ul>	
<b>Accessories</b>				
ZRC-0100	Recirculating Kit (w/ charcoal filters)			\$ 24.99
ZOF-C002	Charcoal Filter Replacement (each)			\$ 14.99
AK0800AS	17-1/2" - 20-1/2" Depth SS Liner (For 30" hood)			\$ 129.00
AK0836AS	17-1/2" - 20-1/2" Depth SS Liner (For 36" hood)			\$ 149.00
ZOB0023	Halogen Bulb (GU10 35W 120V)			\$ 10.99
ZOB0040	Bloom™ GU10 LED (6W, 3000K)			\$ 14.99

CORE COLLECTION



TWISTER ES

MODEL	FINISH	SIZE W x D	MAP	MSRP
<b>TWISTER ES 290 CFM ENERGY STAR Power Pack</b>				
AK8000AS-ES	S	27-9/16" x 11-13/16"	\$ 359	\$ 379
<ul style="list-style-type: none"> <li>•Max. Blower CFM: 290</li> <li>•Sones: 1.6-3.8</li> <li>•3 speed slide controls</li> </ul>		<ul style="list-style-type: none"> <li>•6" round vertical ducting</li> <li>•Insert height 10-1/4"</li> <li>•Stainless steel liner option</li> </ul>	<ul style="list-style-type: none"> <li>•13W fluorescent lights</li> <li>•ENERGY STAR certified</li> </ul>	
<b>Accessories</b>				
AK0800AS	17-1/2" - 20-1/2" Depth SS Liner (For 30" hood)			\$ 129.00
AK0836AS	17-1/2" - 20-1/2" Depth SS Liner (For 36" hood)			\$ 149.00
ZOB0036	Fluorescent Bulb (GU24 13W 120V)			\$ 12.99



**DID YOU KNOW** Tornado and Twister liners are adjustable and can accommodate multiple cabinet depths.

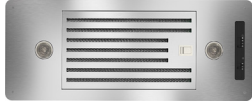
Finish: (S)-Stainless Steel

Warranty: 3 years non-consumable parts, 1 year labor (AK84) 10 years non-consumable parts, 1 year labor (AK80, AK80-ES)

All prices, models, and specifications are subject to change without notice. Please call to verify pricing and availability. DEC19.0101

INSERT

CORE COLLECTION



TORNADO I

MODEL	FINISH	SIZE W x D	MAP	MSRP
<b>TORNADO I 600 CFM Power Pack w/ Hybrid Baffle Filter</b>				
AK8100AS-BF	S	27-9/16" x 11-13/16"	\$ 579	\$ 609
<ul style="list-style-type: none"> <li>•Max. Blower CFM: 600</li> <li>•Sones: 1.4-6</li> <li>•3 speed slide controls</li> </ul>		<ul style="list-style-type: none"> <li>•6" round vertical ducting</li> <li>•Insert height 10-1/4"</li> <li>•Stainless steel liner option</li> </ul>	<ul style="list-style-type: none"> <li>•35W halogen lights</li> <li>•Dual-level lighting</li> <li>•Hybrid Baffle filter</li> </ul>	
<b>Accessories</b>				
AK0800AS	17-1/2" - 20-1/2" Depth SS Liner (For 30" hood)			\$ 129.00
AK0836AS	17-1/2" - 20-1/2" Depth SS Liner (For 36" hood)			\$ 149.00
Z0B0023	Halogen Bulb (GU10 35W 120V)			\$ 10.99
Z0B0040	Bloom™ GU10 LED (6W, 3000K)			\$ 14.99
RED006	Airflow Reducer, reduces 25 CFM			\$ 19.99
MUA006A	Make-Up Air Kit			\$ 189.00

PRO COLLECTION



TORNADO II

MODEL	FINISH	SIZE W x D	MAP	MSRP
<b>TORNADO II 1,000 CFM Power Pack w/ Wireless Remote Control</b>				
AK8200AS	S	29-13/16" x 15-13/16"	\$1,019	\$1,099
<ul style="list-style-type: none"> <li>•Max. Blower CFM: 1,000</li> <li>•Sones: 3.5-8</li> <li>•3 speed electronic controls</li> <li>•CleanAir function</li> </ul>		<ul style="list-style-type: none"> <li>•8" round vertical ducting</li> <li>•Insert height 11-7/16"*</li> <li>•Wireless remote control</li> <li>•Auto delay-off</li> </ul>	<ul style="list-style-type: none"> <li>•35W halogen lights</li> <li>•Dual-level lighting</li> <li>•Pro baffle filters</li> </ul>	
*Height dimension does not include 5" tall, 8" round duct adapter.				
<b>Accessories</b>				
AK0806BS	17-5/8" - 20-1/8" Depth SS Liner (For 36" hood)			\$ 149.00
AK0806AS	20-1/2" - 23-1/2" Depth SS Liner (For 36" hood)			\$ 149.00
AK0842AS	20-1/2" - 23-1/2" Depth SS Liner (For 42" hood)			\$ 169.00
Z0B0023	Halogen Bulb (GU10 35W 120V)			\$ 10.99
Z0B0040	Bloom™ GU10 LED (6W, 3000K)			\$ 14.99
MUA008A	Make-Up Air Kit			\$ 199.00

PRO COLLECTION



TORNADO III

MODEL	FINISH	SIZE W x D	MAP	MSRP
<b>TORNADO III Power Pack w/ Wireless Remote Control and Multiple Blowers - BODY ONLY*</b>				
AK8300ASX	S	38-7/16" x 15-13/16"	\$ 809	\$ 899
<ul style="list-style-type: none"> <li>•Max. Blower CFM: 290-1,000 (not included)</li> <li>•Sones: 1.4-8 (depends on blower)</li> <li>•3 speed electronic controls</li> <li>•CleanAir function</li> </ul>		<ul style="list-style-type: none"> <li>•6" or 8" round vertical ducting</li> <li>•Insert height 11-7/16"**</li> <li>•Wireless remote control</li> <li>•Auto delay-off</li> </ul>	<ul style="list-style-type: none"> <li>•35W halogen lights</li> <li>•Dual-level lighting</li> <li>•Pro baffle filters</li> </ul>	
*Requires purchase of Zephyr blower, sold separately. **Height dimension does not include 5" tall, 8" round duct adapter used with blowers 1,000 CFM or greater.				
<b>Accessories and Blowers</b>				
AK0848BS	17-5/8" - 20-1/8" Depth SS Liner (For 48" hood)			\$ 179.00
AK0848AS	20-1/2" - 23-1/2" Depth SS Liner (For 48" hood)			\$ 179.00
AK0854AS	20-1/2" - 23-1/2" Depth SS Liner (For 54" hood)			\$ 189.00
AK0860AS	20-1/2" - 23-1/2" Depth SS Liner (For 60" hood)			\$ 199.00
Z0B0023	Halogen Bulb (GU10 35W 120V)			\$ 10.99
Z0B0040	Bloom™ GU10 LED (6W, 3000K)			\$ 14.99
<b>SO</b> CBI-290B	290 CFM Internal Blower (6" round duct)			\$ 199.00
CBI-600B	600 CFM Internal Blower (6" round duct)			\$ 229.00
PBI-1100A*	1,000 CFM Internal Blower (8" round duct)			\$ 369.00
PBN-1000A	1,000 CFM In-Line Blower (10" to 8" round duct**)			\$ 699.00
CBE-1000	1,000 CFM External Blower (10" to 8" round duct**)			\$ 799.00
RED006	Airflow Reducer, 6" Round, 25 CFM (for CBI-600)			\$ 19.99
MUA006A	Make-Up Air Kit (600 CFM)			\$ 189.00
MUA008A	Make-Up Air Kit (1,000 CFM)			\$ 199.00

\*PBI-1100A Dual blower is rated at 1,000 cfm when installed in an AK83 due to the reduced 8" round duct opening.  
\*\*10" round duct connects to external/in-line blower. Must transition from 10" to 8" before duct passes through ceiling. 10" to 8" adapter included with external/in-line blower.

Finish: (S)-Stainless Steel  
Warranty: 10 years non-consumable parts, 1 year labor

All prices, models, and specifications are subject to change without notice.  
Please call to verify pricing and availability.  
DEC19.0101

INSERT



CORE COLLECTION

VORTEX

MODEL	FINISH	SIZE W x D	MAP	MSRP
<b>VORTEX 390 CFM One-Piece Liner w/ Recirculating Option &amp; Adjustable Depth</b>				
AK9028AS	S	28-3/8" x 17-1/2" to 20-1/2"	\$ 479	\$ 529
AK9034AS	S	34-3/8" x 17-1/2" to 20-1/2"	\$ 519	\$ 569
<b>VORTEX 290 CFM One-Piece Liner w/ Recirculating Option &amp; Adjustable Depth</b>				
AK9028AS290	S	28-3/8" x 17-1/2" to 20-1/2"	\$ 479	\$ 529
AK9034AS290	S	34-3/8" x 17-1/2" to 20-1/2"	\$ 519	\$ 569
•Max. Blower CFM: 390, 290		•6" round vertical ducting	•35W halogen lights	
•Sones: 1.4-5 or 1.3-3.2		•Insert height 12-3/8"	•Dual-level lighting	
•3 speed slide controls		•Hybrid baffle filter		
<b>Accessories</b>				
ZRC-9000	Recirculating Kit (w/ charcoal filters)			\$ 24.99
ZOF-C090	Charcoal Filter Replacement (each)			\$ 14.99
ZOB0023	Halogen Bulb (GU10 35W 120V)			\$ 10.99
ZOB0040	Bloom™ GU10 LED (6W, 3000K)			\$ 14.99



CORE COLLECTION

VORTEX ES



MODEL	FINISH	SIZE W x D	MAP	MSRP
<b>VORTEX ES 290 CFM ENERGY STAR One-Piece Liner w/ Adjustable Depth</b>				
AK9028AS-ES	S	28-3/8" x 17-1/2" to 20-1/2"	\$ 519	\$ 569
AK9034AS-ES	S	34-3/8" x 17-1/2" to 20-1/2"	\$ 549	\$ 599
•Max. Blower CFM: 290		•6" round vertical ducting	•13W fluorescent lights	
•Sones: 1.3-3.5		•Insert height 12-3/8"	•ENERGY STAR certified	
•3 speed slide controls		•Hybrid baffle filter		
<b>Accessories</b>				
ZOB0036	Fluorescent Bulb (GU24 13W 120V)			\$ 12.99



CORE COLLECTION

MONSOON MINI

MODEL	FINISH	SIZE W x D	MAP	MSRP
<b>MONSOON MINI 300 CFM One-Piece Liner w/ Hybrid Baffle Filters</b>				
AK9128AS-BF	S	28-3/8" x 18-1/16"	\$ 499	\$ 529
AK9134AS-BF	S	34-3/8" x 18-1/16"	\$ 519	\$ 549
•Max. Blower CFM: 300		•7" or 3-1/4"x10" vertical ducting	•35W halogen lights	
•Sones: 1.5-4		•3-1/4"x10" horizontal ducting	•Dual-level lighting	
•Insert height 6-1/8"		•3 speed slide controls	•Hybrid Baffle filters	
<b>Accessories</b>				
ZRC-9100A	Recirculating Kit (w/ charcoal filters)			\$ 49.99
ZOF-C091	Charcoal Filter Replacement (each)			\$ 19.99
ZOB0023	Halogen Bulb (GU10 35W 120V)			\$ 10.99
ZOB0040	Bloom™ GU10 LED (6W, 3000K)			\$ 14.99

Finish: (S)-Stainless Steel

Warranty: 3 years non-consumable parts, 1 year labor

All prices, models, and specifications are subject to change without notice. Please call to verify pricing and availability. DEC19.0101

INSERT



CORE COLLECTION

MONSOON I  
ACT™

MODEL	FINISH	SIZE W x D	MAP	MSRP
<b>MONSOON I</b> 600 CFM One-Piece Liner w/ Horizontal Ducting Option & ACT™				
AK9228AS	S	28-3/8" x 19-1/4"	\$ 849	\$ 999
AK9234AS	S	34-3/8" x 19-1/4"	\$ 899	\$1,049

- Max. Blower CFM: 600
- ACT Max. Blower CFM: 390, 290
- Sones: 1-6
- 6 speed electronic controls
- Auto delay-off
- 8" round vertical ducting
- 8" or 3-1/4"x10" horizontal ducting
- Insert height 12"
- Pro baffle filters
- 35W halogen lights
- Dual-level lighting
- Wireless remote control
- CleanAir function

<b>MONSOON I</b> 1,200 CFM One-Piece Liner w/ ACT™				
AK9240AS	S	40-3/8" x 19-1/4"	\$1,399	\$1,599
AK9246AS	S	46-3/8" x 19-1/4"	\$1,449	\$1,649

- Max. Blower CFM: 1,200
- ACT Max. Blower CFM: 590, 390
- Sones: 3.5-9
- Pro baffle filters
- 10" round vertical ducting
- Insert height 12"\*
- Wireless remote control
- CleanAir function
- 35W halogen lights
- Dual-level lighting
- 6 speed electronic controls
- Auto delay-off

Accessories				
ZOB0023	Halogen Bulb (GU10 35W 120V)			\$ 10.99
ZOB0040	Bloom™ GU10 LED (6W, 3000K)			\$ 14.99
MUA006A	Make-Up Air Kit (600 CFM)			\$ 189.00
MUA010A	Make-Up Air Kit (1,200 CFM)			\$ 249.00

\* Height dimension does not include 5" tall, 10" round duct adapter.



PRO COLLECTION

MONSOON II  
ACT™

<b>MONSOON II</b> 1,200 CFM One-Piece Liner w/ Pro Baffle Filters & ACT™				
AK9334AS	S	34-3/8" x 22-1/2"	\$1,349	\$1,549
AK9340AS	S	40-3/8" x 22-1/2"	\$1,399	\$1,599
AK9346AS	S	46-3/8" x 22-1/2"	\$1,449	\$1,649
AK9352AS	S	52-3/8" x 22-1/2"	\$1,549	\$1,749

- Max. Blower CFM: 1,200
- ACT Max. Blower CFM: 590, 390
- Sones: 3.5-9
- Pro baffle filters
- 10" round vertical ducting
- Insert height 12"\*
- Wireless remote control
- CleanAir function
- 35W halogen lights
- Dual-level lighting
- 6 speed electronic controls
- Auto delay-off

Accessories				
ZOB0023	Halogen Bulb (GU10 35W 120V)			\$ 10.99
ZOB0040	Bloom™ GU10 LED (6W, 3000K)			\$ 14.99
MUA010A	Make-Up Air Kit			\$ 249.00

\* Height dimension does not include 5" tall, 10" round duct adapter.



CORE COLLECTION

MONSOON DCBL  
DCBL SUPPRESSION SYSTEM™ ACT™

<b>MONSOON DCBL</b> 715 CFM One-Piece Liner w/ DCBL Suppression System® & ACT™				
AK9428AS	S	28-3/8" x 22-1/2"	\$1,249	\$1,449
AK9434AS	S	34-3/8" x 22-1/2"	\$1,299	\$1,499
AK9440AS	S	40-3/8" x 22-1/2"	\$1,349	\$1,549

- Max. Blower CFM: 715
- ACT Max. Blower CFM: 590, 390, 290
- Sones: 0.8-5.8
- 6 speed LCD controls
- Auto delay-off
- 8" round vertical ducting
- 8" or 3-1/4"x10" horizontal ducting
- Insert height 12"
- Pro baffle filters
- Bloom™ HD LED lights
- Dual-level lighting
- Wireless remote control
- CleanAir function

Accessories				
MUA008A	Make-Up Air Kit			\$ 199.00

Finish: (S)-Stainless Steel  
Warranty: 3 years non-consumable parts, 1 year labor

All prices, models, and specifications are subject to change without notice. Please call to verify pricing and availability. DEC19.0101

Effective January, 2020

# ZEPHYR

OUTDOOR  
INSERT / WALL

PRO COLLECTION



WILLOW OUTDOOR

MODEL	FINISH	SIZE W x D	MAP	MSRP
<b>WILLOW</b> 1,000 CFM Outdoor Insert in Stainless Steel or Gray Finish				
AK8800AS	S	29-13/16" x 15-13/16"	\$1,169	\$1,249
AK8800AG	Gray	29-13/16" x 15-13/16"	\$ 849	\$ 899
•Max. Blower CFM: 1,000		•8" round vertical ducting	•35W halogen lights	
•Sones: 3.5-8		•Powder coated gray (AK8800AG)	•Single-level lighting	
•2 speed marine grade controls		•304 stainless steel (AK8800AS)	•Pro baffle filters	
<b>Accessories</b>				
AK0886AS	20-1/2" - 23-1/2" Depth 304 SS Liner (Fits a 36" hood)			\$ 289.00
AK0886BS	26-1/2" - 29-1/2" Depth 304 SS Liner (Fits a 36" hood)			\$ 299.00
AK0882AS	20-1/2" - 23-1/2" Depth 304 SS Liner (Fits a 42" hood)			\$ 329.00
AK0882BS	26-1/2" - 29-1/2" Depth 304 SS Liner (Fits a 42" hood)			\$ 339.00
AK0888AS	20-1/2" - 23-1/2" Depth 304 SS Liner (Fits a 48" hood)			\$ 369.00
AK0888BS	26-1/2" - 29-1/2" Depth 304 SS Liner (Fits a 48" hood)			\$ 379.00
AK0884AS	20-1/2" - 23-1/2" Depth 304 SS Liner (Fits a 54" hood)			\$ 409.00
AK0884BS	26-1/2" - 29-1/2" Depth 304 SS Liner (Fits a 54" hood)			\$ 419.00
AK0880AS	20-1/2" - 23-1/2" Depth 304 SS Liner (Fits a 60" hood)			\$ 449.00
AK0880BS	26-1/2" - 29-1/2" Depth 304 SS Liner (Fits a 60" hood)			\$ 469.00
ZOB0023	Halogen Bulb (GU10 35W 120V)			\$ 10.99
ZOB0040	Bloom™ GU10 LED (6W, 3000K)			\$ 14.99

PRO COLLECTION



SPRUCE OUTDOOR

MODEL	FINISH	SIZE W x D	MAP	MSRP
<b>SPRUCE</b> 1,200 CFM Outdoor Insert for Wall or Island Installation				
AK9834AS	S	34-3/8" x 22-1/2"	\$1,249	\$1,349
AK9840AS	S	40-3/8" x 22-1/2"	\$1,299	\$1,399
AK9846AS	S	46-3/8" x 22-1/2"	\$1,399	\$1,499
AK9858AS	S	58-7/8" x 22-1/2"	\$1,699	\$1,799
•Max. Blower CFM: 1,200		•10" round vertical ducting	•35W halogen lights	
•Sones: 3.5-9		•Pro baffle filters	•Dual-level lighting	
•3 speed controls		•304 stainless steel	•Directional lighting	
<b>Accessories</b>				
ZOB0040	Bloom™ GU10 LED (6W, 3000K)			\$ 14.99

PRO COLLECTION



CYPRESS OUTDOOR

MODEL	FINISH	SIZE W x D	MAP	MSRP
<b>CYPRESS</b> 1,200 CFM Outdoor 18in Tall Pro-Style Hood w/ 32" Depth				
AK7836BS	S	36" x 32"	\$1,799	\$1,999
AK7842BS	S	42" x 32"	\$1,899	\$2,099
AK7848BS	S	48" x 32"	\$2,099	\$2,299
AK7854BS	S	54" x 32"	\$2,299	\$2,499
•Max. Blower CFM: 1,200		•10" round vertical & horizontal ducting	•35W halogen lights	
•Sones: 3.5-9		•Pro baffle filters	•Dual-level lighting	
•3 speed controls		•304 stainless steel	•32" depth	
<b>Accessories</b>				
AK0736BS	12"H x 36"W 304 SS Duct Cover (For AK7836BS)			\$ 269.00
AK0742BS	12"H x 42"W 304 SS Duct Cover (For AK7842BS)			\$ 289.00
AK0748BS	12"H x 48"W 304 SS Duct Cover (For AK7848BS)			\$ 309.00
AK0754BS	12"H x 54"W 304 SS Duct Cover (For AK7854BS)			\$ 349.00
Z1C-0078	Duct Cover Extension - 22" width (For a 10'-12' ceiling)			\$ 399.00
ZOB0023	Halogen Bulb (GU10 35W 120V)			\$ 10.99
ZOB0040	Bloom™ GU10 LED (6W, 3000K)			\$ 14.99

Finish: (Gray)-Gray Powder Coated (S)-Stainless Steel  
Warranty: 3 years non-consumable parts, 1 year labor

All prices, models, and specifications are subject to change without notice.  
Please call to verify pricing and availability.  
DEC19.0101

ACCESSORIES

**MODEL DESCRIPTION**

**MSRP**

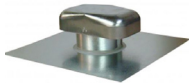
**HVAC Accessories**



AK00029	6" round in-line damper	\$ 24.99
AK00049	7" round in-line damper	\$ 27.99
AK00069	8" round in-line damper	\$ 29.99
AK00079	10" round in-line damper	\$ 39.99



AK00039	7 to 6" round reducer	\$ 9.99
AK00037	8 to 6" round reducer	\$ 10.99
AK00035	8 to 7" round reducer	\$ 11.99
AK00040	10 to 8" round reducer	\$ 19.99



<b>SO</b> AK00046	6" round exhaust roof cap w/bird screen	\$ 29.99
<b>SO</b> AK00047	7" round exhaust roof cap w/bird screen	\$ 34.99
AK00048	8" round exhaust roof cap w/bird screen	\$ 37.99
AK00050	10" round exhaust roof cap w/bird screen	\$ 49.99



<b>SO</b> AK00041	3-1/4" x 10" rectangular exhaust wall cap w/ damper & bird screen	\$ 34.99
-------------------	---	----------



AK00042	6" round exhaust wall cap w/damper & bird screen	\$ 29.99
<b>SO</b> AK00043	7" round exhaust wall cap w/damper & bird screen	\$ 34.99
AK00044	8" round exhaust wall cap w/damper & bird screen	\$ 39.99
AK00045	10" round exhaust wall cap w/damper & bird screen	\$ 54.99



AK00030	6" round inlet wall cap w/bird screen	\$ 24.99
AK00031	7" round inlet wall cap w/bird screen	\$ 27.99
AK00032	8" round inlet wall cap w/bird screen	\$ 29.99
AK00052	10" round inlet wall cap w/bird screen	\$ 34.99



AK00066	6" round damper with collar	\$ 12.99
AK00067	7" round damper with collar	\$ 12.99

**Universal Make-Up Air Damper Kits**



MUA006A	6" round make-up air damper kit for up to 600 CFM	\$189.00
MUA008A	8" round make-up air damper kit for up to 1,000 CFM	\$199.99
MUA010A	10" round make-up air damper kit for up to 1,200 CFM	\$249.00

**DID YOU KNOW** Zephyr's Universal Make-Up Air Dampers can be used with any range hood over 300 CFM, even non-Zephyr branded range hoods.



**Warm White LED Bulb - Direct Replacement for GU10 Halogen Bulbs**

ZOB0040	Bloom™ GU10 LED (6W, 3000K)	\$ 14.99
---------	-----------------------------	----------



PP9000C

MODEL	DESCRIPTION
<b>HOOD DISPLAY</b>	
PP9000C*	6-Tier 30in Zephyr Hood Display. Includes 4 adjustable-height under-cabinet hood shelves, 6 product card sleeves and an acrylic mirror to help show the bottom of the lowest under-cabinet hood. <b>Requires an insert frame from the list below.</b> Dims: 36"W x 28"D x 94"H.
PP9000C-SOLID	Solid insert frame for PP9000C
PP9000C-8000A	AK8000/AK8100 insert frame for PP9000C
PP9000C-8200A	AK8200 insert frame for PP9000C
PP9000C-8400A	AK8400 insert frame for PP9000C
PP9000C-9028A	AK9028 insert frame for PP9000C
PP9000C-9128A	AK9128 insert frame for PP9000C
PP9000C-9228A	AK9228 insert frame for PP9000C
PP9000C-SHELF**	Under-cabinet hood shelf for PP9000C
PPCRDB_XXXX***	3"x10" product information card for display.



**SHOWN WITH:**  
(1) wall hood  
(4) under-cabinet hoods  
(1) PP9000C-9128A



**SHOWN WITH:**  
(1) wall hood  
(3) under-cabinet hoods  
(1) PP9000C-9128A



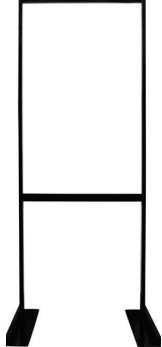
**SHOWN WITH:**  
(5) under-cabinet hoods  
(1) PP9000C-SHELF\*\*  
(1) PP9000C-SOLID

\*Insert frame must be ordered with the PP9000C order.

\*\*Under-cabinet hood shelf must be ordered to display 5 under-cabinet hoods.

\*\*\*For PP9000C, please order 3"x10" PPCRDB product information cards. Specify hood name + qty. Product information cards can also be provided in PDF upon request.

POP DISPLAYS



PP3030-FRM



PP3030-OPL



PP3030-WALL



PP3030-UC

**MODEL DESCRIPTION**

**HOOD DISPLAYS**

**PP3030-FRM + PP3030-OPL** Single unit modular display frame plus AK9228 insert display box. Display box is also wall-mountable. Accommodates a 30" freestanding range.  
Dims: 32-1/4"W x 25"D x 82"H. Box Only: 32-1/4"W x 23"D x 18"H.

**PPCRDB-XXXX** 3"x10" product information card for display.

**PP3030-FRM + PP3030-WALL\*** Single unit modular display frame plus mounting board for 30" or 36" wall hoods. Accommodates a 30" freestanding range.  
Dims: 32-1/4"W x 25"D x 82"H. Board Only: 32-1/4"W x 3/4"D x 18"H.

**PPCRDB-XXXX** 3"x10" product information card for display.

**PP3030-FRM + PP3030-UC\*** Single unit modular display frame plus 30" under-cabinet hood display box. Display box is also wall-mountable. Accommodates a 30" freestanding range.  
Dims: 32-1/4"W x 25"D x 82"H. Box Only: 32-1/4"W x 12"D x 10"H.

**PPCRDB-XXXX** 3"x10" product information card for display.

\*For PP3030, please order 3"x10" PPCRDB product information cards. Specify hood name + qty. Product information cards can also be provided in PDF upon request.



**HOOD DISPLAY**

**PPOPL336\*** 3-Tier One-Piece Liner display. Holds (3) 30" one-piece liner inserts  
Dims: 36"W x 15"D x 79"H.

**PPCRDB-XXXX** 3"x10" product information card for display.

\*For PPOPL336, please order 3"x10" PPCRDB product information cards. Specify hood name + qty. Product information cards can also be provided in PDF upon request.

POP DISPLAYS



**DOWNDRAFT OPEN**



**DOWNDRAFT CLOSED**

**MODEL DESCRIPTION**

**DOWNDRAFT DISPLAY**

**PPDD3215\*** Shallow-depth display to accommodate a 30" Lift downdraft, DLI-E30ASX.  
 Dims: 32"W x 15"D x 36"H.

\*Includes 30"W x 10"H product information card for top surface.

**LIFT downdraft**  
 Provides the best and most versatile lift-down draft with the DLI-E30ASX. The shallow depth and lift-down draft provides the most space for your cooktop. The lift-down draft provides the most space for your cooktop. The lift-down draft provides the most space for your cooktop.

MODEL	DLI-E30ASX	DLI-E30ASX
SIZE	30"	30"
COLOR	SS	SS
CFM	405, 1,000	405, 1,000

**FEATURES**

- 30" Cooking Size
- Multiple Blower Options
- 30" Capture Zones
- Welded & Polished Corners
- Recessed Lighting Option
- Recessed Lighting Option

**COOKING APPLIANCE CONFIGURATIONS**  
 Accommodates all major cooking appliances thanks to our unique ducting system.

**4-WAY DUCTING**  
 Connects the ducting to vent in multiple directions, compatible with all blower options.

Diagrams show configurations for:
 

- Countertop
- Countertop + Overstove
- Front Exhaust
- Side Exhaust
- Range Hood
- Range
- Rear Exhaust
- Bottom Exhaust

POP DISPLAYS



PPWC2402

MODEL	DESCRIPTION
<b>WINE &amp; BEVERAGE COOLER DISPLAY</b>	
PPWC2402	Presrv™ wine & beverage cooler display. Includes trim to display (2) 24" compact units or (1) 24" full size unit. <b>Requires additional panels for 15" units.</b> Dims: 27-3/4"W x 80"H x 27-3/4"D
PPWCTRIM15	15" trim kit for PPWC2402 (one trim)



**PPWC2402 SHOWN WITH:**  
(2) 24" compact wine & beverage coolers: PRB24C01BG, PRW24C32BG



**PPWC2402 SHOWN WITH:**  
(1) 24" full size wine cooler: PRW24F01BG



**PPWC2402 SHOWN WITH:**  
(1) 15" compact wine cooler: PRW15C01AG  
(1) 24" compact wine cooler: PRW24C32BG  
(1) PPWCTRIM15



**PPWC2402 SHOWN WITH:**  
(2) 15" compact wine & beverage coolers: PRW-15C01AG, PRB15C01AG  
(2) PPWCTRIM15





<b>Mid-Atlantic Division</b>	800-950-9900	215-554-6566	<b>MID-ATL@almo.com</b>
<b>Northeast Division</b>	800-836-2522	215-554-6697	<b>NE@almo.com</b>
<b>Southeast Division</b>	800-645-3505	215-554-6671	<b>SE@almo.com</b>
<b>South Central Division</b>	844-277-2566	215-554-6514	<b>SoCentral@almo.com</b>



## Almo Web Support

- premium.almo.com - Overview of Almo Premium Appliances
- www.access.almo.com - Almo's business-to-business website
  - *Spec sheets, inventory, pricing, training, spiff claims*



## Service/Parts Request

- **Contact Zephyr to schedule service or request replacement parts**
  - **Phone** ☎ : 888-880-8368 ext. 301
  - **Customer Care Email** ✉ : productsupport@zephyronline.com
  - For cosmetic or damaged / missing parts, please contact Almo Customer Care
- **If you need to escalate an issue, please contact Almo Customer Care**
  - **Email** ✉ : PremiumApplianceCCC@almo.com
  - Call your regional number, option 2

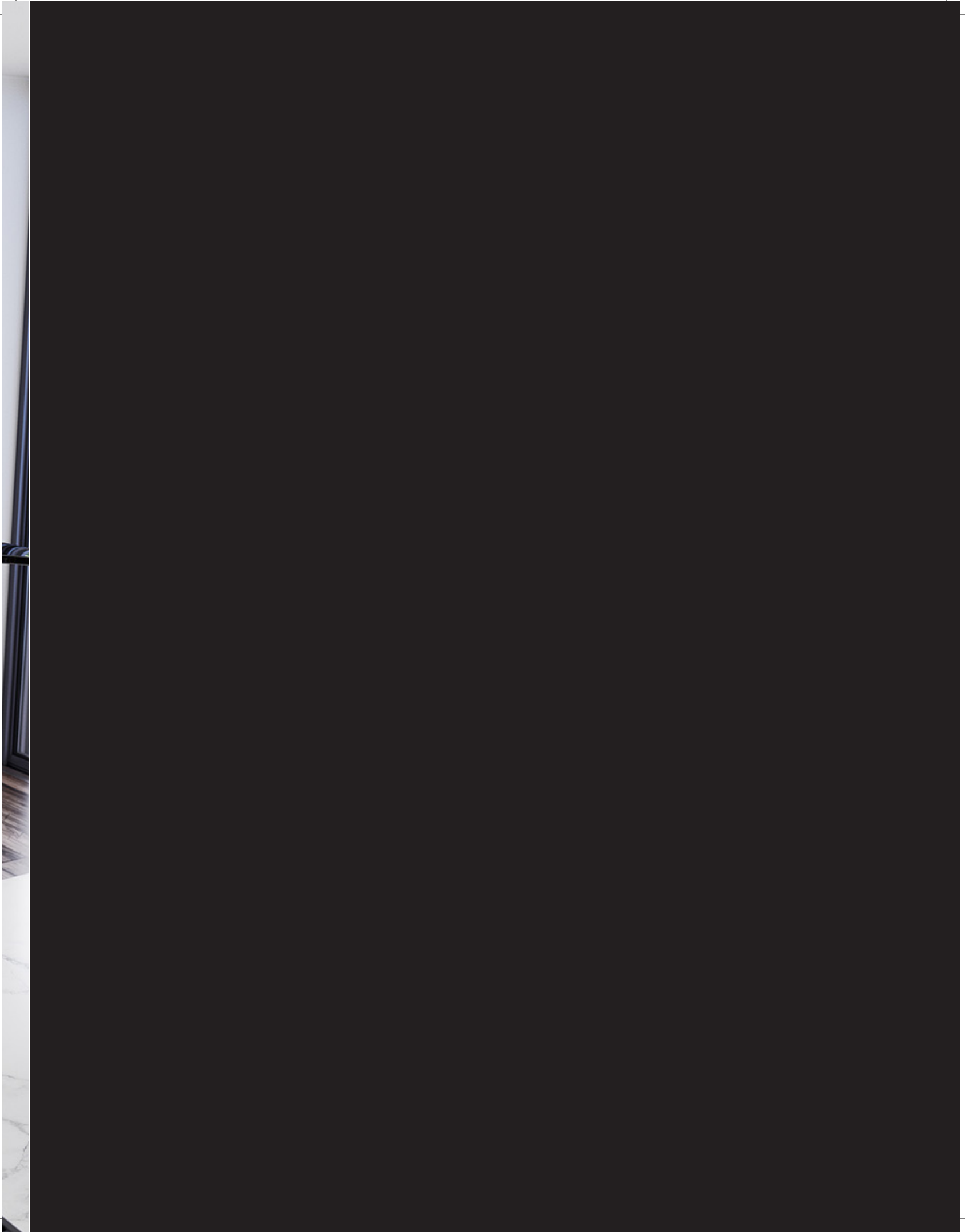


## RA Policies

- *Contact Almo CCC within 30 days of receipt with reason for return, model/serial number, and PO or Sales Order#*
- **Remorse/order cancelled**
  - *If the unit is factory sealed and a current model, an RA will be approved*
    - Dealer is responsible for return freight
    - No restocking fee (20%) if within the first 10 days receipt
  - *If the unit is opened but unused, an RA will be approved if within the first 10 days*
    - Dealer is responsible for return freight
    - Minimum 35% restock fee
- **Concealed damaged returns**
  - *Refuse any product you feel may be damaged (excludes full container orders)*
  - *Contact Almo CCC with detail of model/serial #, DOP, and how the unit was signed for*
  - *Photos of all sides of the carton and damage must be submitted for any return request on a damage product*

- There are no returns on **special order products**
- There are no returns on **installed products**
- Product returned not in the condition claimed is subject to a **minimum 35% restocking fee**







# ZEPHYR

PRZPG042020