

Marvel Retail Price Schedule

Effective: November 1, 2020
Builder Schedule: MF



4960 Golden Pkwy, Bldg. #3A, Buford, Georgia 30518 • 800.241.9152
www.middlebyresidential.com

WHERE TO CALL

Atlanta/Buford	770.932.7282, 800.241.9152	Downey, CA	800.241.9152
Atlanta/Buford Fax	770.932.7292	Downey, CA Fax	562.299.6978
Sales Fax	877.885.4002	Parts	Press 1
		Product Sales	Press 2
		Service & Support	Press 3

WHO TO CALL

INSIDE SALES DEPARTMENT

Extranet: <https://middlebyresidential.shop.commerciat.com>

- To place an order for merchandise
- To check merchandise inventory
- For ventilation information
- Questions regarding online ordering
- Questions regarding programs or product features
- Questions regarding care and use

PARTS DEPARTMENT

- Phone: 616-754-5601
- E-mail: orderdesk@marvelrefrigeration.com
- Order parts online at marvelrefrigeration.com/parts-accessories

SERVICE DEPARTMENT

- Phone: 616-754-5601
- Questions regarding service
- Locate local service agency

WARRANTY

- 1 year parts/labor
- 2 year parts/labor on Marvel Professional with bouns 1-year upon product registration
- 5 years parts sealed system on under counter models
- 7 years parts/labor sealed system warranty on Marvel Full size

RETURN GOODS

Obtain RMA number prior to return. All return goods subject to a minimum 25% re-stocking fee and return freight prepaid. No return allowed after 30 days of initial shipment. Contact Inside Sales for RMA number.

SPECIAL ORDERS

All special order items are non-cancelable, non-returnable.

TRAINING

We offer regular training meetings in your store and will be happy to schedule them at your convenience. Please ask your DSM. Service and installation trainings are offered as needed.

TABLE OF CONTENTS

WINE REFRIGERATORS.....	4
BEVERAGE CENTERS	9
REFRIGERATOR / FREEZERS & DRAWERS.....	14
INDOOR ICE MACHINES.....	20
LOW PROFILE BEVERAGE, REFRIGERATOR & ICE MACHINES (ADA HEIGHT)	25
OUTDOOR REFRIGERATORS / FREEZERS.....	29
OUTDOOR ICE MACHINES	32
INDOOR/OUTDOOR DISPENSER CABINETS FOR BEER OR WINE.....	33
ACCESSORIES.....	34
DISCONTINUED BUILT-IN REFRIGERATION*.....	35-38
BUILT-IN FULL SIZE ACCESSORIES*.....	39
DISCONTINUED MODELS (ICE MACHINES & BEER DISPENSERS).....	40

MARVEL WINE REFRIGERATORS

15" MARVEL WINE REFRIGERATORS



- Temperature range from 40° to 65° F
- Holds 23 wine bottles
- 5 slide-out wine racks with 1.25" solid natural maple shelf fronts
- 1, 3-bottle wine cradle
- White incandescent interior display lighting
- Cool Blue LED temperature control display
- Designer handle and 4" adjustable black toe grill
- Close Door Assist hinge system
- Audible and visual alarms for door ajar and high/low temperature
- Filler kit available for 18" wide opening
- 1-year warranty, 5-year sealed system parts warranty

Model	Finish	MAP	MSRP	Shipping wt. (lbs)
ML15WSG0RS	15" Marvel Wine Refrigerator, Stainless Frame Glass Door, Right Hinge	\$1,509	\$1,689	121
ML15WSG0LS	15" Marvel Wine Refrigerator Stainless Frame Glass Door, Left Hinge	\$1,509	\$1,689	121

15" MARVEL HIGH-EFFICIENCY SINGLE ZONE WINE CELLAR



- Dynamic cooling technology delivers precise temperature stability
- Frost free with temperature range between 40° and 65° F
- Thermal-efficient insulated cabinet with tinted, UV-resistant glass door
- Stores up to 24 wine bottles on 6, 4-bottle roller-glide wine racks
- Three-quarter extension roller-glide shelf system prevents jarring
- Heavy-gauge wire wine racks safely cradle each wine bottle
- 4" adjustable black flat toe grill
- Vibration Neutralization System protects wine from agitation, allowing it to come to full maturation
- Two-stage, white theater-style LED lighting, midnight black interior and natural maple shelf fronts, stainable to match cabinetry
- Audible and visual alarms for door ajar and high/low temperature
- Close Door Assist hinge system (panel overlay option has soft-close integrated hinge)
- Filler kit available for 18" wide opening
- 1-year warranty, 5-year sealed system parts warranty

Model	Finish	MAP	MSRP	Shipping wt. (lbs)
ML15WSG2RS	15" Marvel High-Efficiency Wine Refrigerator, Stainless Frame Glass Door, Right Hinge	\$1,779	\$1,979	125
ML15WSG2LS	15" Marvel High-Efficiency Wine Refrigerator, Stainless Frame Glass Door, Left Hinge	\$1,779	\$1,979	125
ML15WSG2RB	15" Marvel High-Efficiency Refrigerator, Smooth Black Frame Glass Door, Right Hinge	\$1,779	\$1,979	125
ML15WSG2LB	15" Marvel High-Efficiency Refrigerator, Smooth Black Frame Glass Door, Left Hinge	\$1,779	\$1,979	125
ML15WSF3RP	15" Marvel High-Efficiency Refrigerator, Panel Overlay Frame Glass Door, Integrated Right Hinge	\$1,889	\$2,109	125
ML15WSF3LP	15" Marvel High-Efficiency Wine Refrigerator, Panel Overlay Frame Glass Door, Integrated Left Hinge	\$1,889	\$2,109	125
ML15WSP3RP	15" Marvel High-Efficiency Wine Refrigerator, Solid Panel Overlay Ready Door, Integrated Right Hinge	\$1,889	\$2,109	125
ML15WSP3LP	15" Marvel High-Efficiency Wine Refrigerator Solid Panel Overlay Ready Door, Integrated Left Hinge	\$1,889	\$2,109	125

MARVEL WINE REFRIGERATORS

15" MARVEL PROFESSIONAL SINGLE ZONE WINE REFRIGERATOR - NEW



- Dynamic cooling technology delivers precise temperature stability
- Multifunction controls allow you to select a precise cabinet temperature from 33°F to 70° F
- Thermal-efficient insulated cabinet with tinted, UV-resistant glass door
- (6) 4-bottle wire wine racks mounted on full-extension, roller-bearing glides
- Stores 24 bottles of wine total
- 1" stainless shelf fronts

- Door lock to protect your collection
- Soft-close integrated hinge
- 4" adjustable stainless flat toe grill
- Theater-style display lighting
- Features an elegant midnight black interior and dual-color lighting options in sapphire blue or arctic white
- Door ajar and high/low temperature alerts
- 2-year warranty with bonus 1-year with product registration

Model	Finish	UMRP	MSRP	Shipping wt. (lbs)
MPWC415SG31A	15" Marvel Professional Single Zone Wine Refrigerator, Stainless Frame, Glass Door With Lock, Reversible Door	\$2,259	\$2,509	118
MPWC415IG31A	15" Marvel Professional Single Zone Wine Refrigerator, Panel Overlay Frame Ready Glass Door, Lock, Reversible Door	\$2,209	\$2,459	118
MPWC415IS31A	15" Marvel Professional Single Zone Wine Refrigerator, Panel Ready, Solid Door, Lock, Reversible Door	\$2,109	\$2,339	118
MPWC415SS31A	15" Marvel Professional Single Zone Wine Refrigerator, Stainless, Solid Door, Lock, Reversible Door	\$2,159	\$2,399	118

24" MARVEL SINGLE ZONE WINE REFRIGERATOR



- Frost free with temperature range between 40° and 65° F
- Tinted, UV-resistant glass door
- Stores up to 45 wine bottles
- Accommodates magnum bottle storage
- 4, 8-bottle rollout wine racks
- 1, 7-bottle display rack and 1, 6-bottle wine cradle
- 1.25" solid natural maple shelf fronts

- 4" adjustable black flat toe grill
- White incandescent interior display lighting
- Blue LED temperature controls
- Close Door Assist hinge system
- Audible and visual alarms for door ajar and high/low temperature
- 1-year warranty, 5-year sealed system parts warranty

Model	Finish	MAP	MSRP	Shipping wt. (lbs)
ML24WSG0RS	24" Marvel Single Zone Wine Refrigerator, Stainless Frame Glass Door, Right Hinge	\$1,609	\$1,799	145
ML24WSG0LS	24" Marvel Single Zone Wine Refrigerator, Stainless Frame Glass Door, Left Hinge	\$1,609	\$1,799	145

MARVEL WINE REFRIGERATORS

24" MARVEL GALLERY SINGLE ZONE WINE REFRIGERATOR



- Dynamic cooling technology delivers precise temperature stability
- Frost free with temperature range between 40° and 65° F
- Thermal-efficient insulated cabinet with tinted, UV-resistant glass door
- Stores up to 27 bottles; accommodates magnum bottle storage
- 1, 8-bottle tray shelf
- 2, 7-bottle roll-out display rack
- Glide-out wine racks with solid natural maple shelf fronts
- 4" adjustable black flat toe grill
- White LED theatre-style dual-level lighting with Marvel Intuit controls
- Close Door Assist hinge system
- Audible and visual alarms for door ajar and high/low temperature
- 1-year warranty, 5-year sealed system parts warranty

Model	Finish	MAP	MSRP	Shipping wt. (lbs)
ML24WSG1RS	24" Marvel Gallery Single Zone Wine Refrigerator, Stainless Steel Frame Glass Door, Right Hinge	\$1,829	\$1,989	145
ML24WSG1LS	24" Marvel Gallery Single Zone Wine Refrigerator, Stainless Steel Frame Glass Door, Left Hinge	\$1,829	\$1,989	145

24" MARVEL HIGH-EFFICIENCY SINGLE ZONE WINE REFRIGERATORS



- Dynamic cooling technology delivers precise temperature stability
- Frost free with temperature range between 40° and 65° F
- Thermal-efficient insulated cabinet with tinted, UV-resistant glass door
- Stores up to 45 wine bottles
- Two-stage, soft white theatre-style LED lighting and midnight black interior
- Roller-glide shelf system includes (2) 7-bottle gallery display racks to display your best wine, (1) 8-bottle roller-glide wine rack and (1) 5-bottle gallery display rack
- Close Door Assist hinge (panel overlay option has soft-close integrated hinge)
- Audible and visual alarms for door ajar and high/low temperature
- 1-year warranty, 5-year sealed system parts warranty

Model	Finish	MAP	MSRP	Shipping wt. (lbs)
ML24WSG3RS	24" Marvel High-Efficiency Single Zone Wine Refrigerator, Stainless Frame Glass Door, Right Hinge	\$2,059	\$2,239	160
ML24WSG3LS	24" Marvel High-Efficiency Single Zone Wine Refrigerator, Stainless Frame Glass Door, Left Hinge	\$2,059	\$2,239	160
ML24WSG3RB	24" Marvel High-Efficiency Single Zone Wine Refrigerator, Smooth Black Frame Glass Door, Right Hinge	\$2,059	\$2,239	160
ML24WSG3LB	24" Marvel High-Efficiency Single Zone Wine Refrigerator, Smooth Black Frame Glass Door, Left Hinge	\$2,059	\$2,239	160
ML24WSF4RP	24" Marvel High-Efficiency Single Zone Wine Refrigerator, Panel Overlay Frame Glass Door, Integrated Right Hinge	\$2,159	\$2,349	160
ML24WSF4LP	24" Marvel High-Efficiency Single Zone Wine Refrigerator, Panel Overlay Frame Glass Door, Integrated Left Hinge	\$2,159	\$2,349	160
ML24WSP4RP	24" Marvel High-Efficiency Single Zone Wine Refrigerator, Solid Panel Overlay Ready Door, Integrated Right Hinge	\$2,159	\$2,349	160
ML24WSP4LP	24" Marvel High-Efficiency Single Zone Wine Refrigerator, Solid Panel Overlay Ready Door, Integrated Left Hinge	\$2,159	\$2,349	160

MARVEL WINE REFRIGERATORS

24" MARVEL PROFESSIONAL SINGLE ZONE WINE REFRIGERATOR - NEW



- Dynamic cooling technology delivers precise temperature stability
- Multifunction controls allow you to select a precise cabinet temperature from 33°F to 70° F
- Thermal-efficient insulated cabinet with tinted, UV-resistant glass door
- 5, 8-bottle smooth-glide, heavy-gauge wine racks
- 2, 4-bottle half-depth wine racks
- Stores up to 48 wine bottles
- Full-extension ball bearing smooth-glide shelf system
- 1" stainless shelf fronts
- Door lock to protect your collection
- 4" adjustable stainless flat toe grill
- Theater-style display lighting
- Features an elegant midnight black interior and dual-color lighting options in sapphire blue or arctic white
- Soft-close integrated hinge
- Door ajar and high/low temperature alerts
- 2-year warranty with bonus 1-year with product registration

Model	Finish	UMRP	MSRP	Shipping wt. (lbs)
MPWC424SG31A	24" Marvel Professional Single Zone Wine Refrigerator Stainless Frame, Glass Door With Lock, Reversible Door	\$2,479	\$2,759	148
MPWC424IG31A	24" Marvel Professional Single Zone Wine Refrigerator, Panel Overlay Frame Ready Glass Door, Lock, Reversible Door	\$2,429	\$2,699	148
MPWC424IS31A	24" Marvel Professional Single Zone Wine Refrigerator Panel Ready, Solid Door, Lock, Reversible Door	\$2,329	\$2,589	148
MPWC424SS31A	24" Marvel Professional Single Zone Wine Refrigerator, Stainless, Solid Door, Lock, Reversible Door	\$2,379	\$2,639	148

MARVEL DUAL ZONE WINE REFRIGERATORS

24" MARVEL HIGH-EFFICIENCY DUAL ZONE WINE REFRIGERATOR



- Dynamic cooling technology delivers precise temperature stability
- True dual zone stores reds and whites at the perfect condition in two independently-controlled zones; temperature range – TOP: 55° to 62°F BOTTOM: 45° to 55°F
- Thermal-efficient insulated cabinet with tinted, UV-resistant glass door
- Two-stage, white theater-style LED lighting and sophisticated midnight black interior
- Heavy-gauge wire wine racks safely cradle each wine bottle
- Three-quarter extension roller-glide shelf system prevents jarring
- Stores up to 40 wine bottles; upper zone: (3) 8-bottle roller-glide full wine racks; lower zone: (1) 8-bottle roller-glide full wine rack, (2) 4-bottle half depth tray shelves
- Close Door Assist System gently and automatically draws door to a close, ensuring door is never accidentally left ajar
- 1-year warranty, 5-year sealed system parts warranty

Model	Finish	MAP	MSRP	Shipping wt. (lbs)
ML24WDG3RS	24" Marvel High-Efficiency Dual Zone Wine Refrigerator, Stainless Frame Glass Door, Right Hinge	\$2,699	\$2,939	160
ML24WDG3LS	24" Marvel High-Efficiency Dual Zone Wine Refrigerator, Stainless Frame Glass Door, Left Hinge	\$2,699	\$2,939	160
ML24WDG3RB	24" Marvel High-Efficiency Dual Zone Wine Refrigerator, Smooth Black Frame Glass Door, Right Hinge	\$2,699	\$2,939	160
ML24WDG3LB	24" Marvel High-Efficiency Dual Zone Wine Refrigerator, Smooth Black Frame Glass Door, Right Hinge	\$2,699	\$2,939	160
ML24WDF4RP	24" Marvel High-Efficiency Dual Zone Wine Refrigerator, Panel Overlay Frame Glass Door, Integrated Right Hinge	\$2,819	\$3,129	160
ML24WDF4LP	24" Marvel High-Efficiency Dual Zone Wine Refrigerator, Panel Overlay Frame Glass Door, Integrated Left Hinge	\$2,819	\$3,129	160
ML24WDP4RP	24" Marvel High-Efficiency Dual Zone Wine Refrigerator, Solid Panel overlay Ready Door, Intergrated Right Hinge	\$2,819	\$3,129	160
ML24WDP4LP	24" Marvel High-Efficiency Dual Zone Wine Refrigerator, Solid Panel overlay Ready Door, Intergrated Left Hinge	\$2,819	\$3,129	160

24" MARVEL PROFESSIONAL DUAL ZONE WINE REFRIGERATOR



- Dynamic cooling technology delivers precise temperature stability
- True dual zone stores reds and whites at the perfect condition in two independently-cotrolled zones; temperature range – TOP: 55° to 62°F BOTTOM: 45° to 55°F
- Thermal-efficient insulated cabinet with tinted, UV-resistant glass door
- Stores up to 40 wine bottles; Upper zone: (3) 8-bottle smooth-glide heavy gauge wine racks
- Lower zone: 1, 8-bottle smooth-glide heavy gauge wine rack and 2, 4-bottle smooth-glide heavy gauge half-depth wine rack
- Full-extension ball bearing smooth-glide shelf system
- 1" stainless shelf fronts
- Theater-style display lighting
- Features an elegant midnight black interior and tri-color lighting with three settings: sapphire blue, arctic white or amber glow
- Door lock to protect your collection
- 4" adjustable stainless flat toe grill
- Soft-close integrated hinge
- Audible and visual alarms for door ajar and high/low temperature
- 2-year warranty with bonus 1-year with product registration

Model	Finish	UMRP	MSRP	Shipping wt. (lbs)
MP24WDG5RS	24" Marvel Professional Dual Zone Wine Refrigerator, Stainless Frame, Glass Door With Lock, Integrated Right Hinge	\$3,359	\$3,729	166
MP24WDG5LS	24" Marvel Professional Dual Zone Wine Refrigerator, Stainless Frame, Glass Door With Lock, Integrated Left Hinge	\$3,359	\$3,729	166
MP24WDF5RP	24" Marvel Professional Dual Zone Wine Refrigerator, Panel Overlay Frame Ready Glass Door, Integrated Right Hinge	\$3,359	\$3,729	166
MP24WDF5LP	24" Marvel Professional Dual Zone Wine Refrigerator, Panel Overlay Frame Ready Glass Door, Integrated Left Hinge	\$3,359	\$3,729	166

MARVEL DUAL ZONE BEVERAGE CENTERS

MARVEL 24" DUAL ZONE WINE & BEVERAGE CENTER



- Two independently controlled temperature zones offers dual options for wine and beverage storage
- Upper zone environment is ideal for wine storage (45°F to 60°F) and the lower zone is designed for beverages and perishables (34°F to 42°F)
- Dynamic cooling technology delivers precise temperature stability
- Vibration Neutralization System protects wine from agitation, allowing it to come to full maturation
- Thermal-efficient cabinet ensures optimum preservation and energy efficiency while maximizing capacity
- Argon-filled, UV-resistant tinted dual pane glass door protects contents from damaging ultraviolet light, while conserving energy
- 5.1 total cu. ft.
- 1.85 cu. ft. upper zone stores 16 bottles of wine on (2) 8-bottle roller-glide wire wine racks
- 3.27 cu. ft. lower zone can hold (112) 12-oz cans, (64) longneck bottles or an additional 6 wine bottles
- Full-width cantilevered shelf with 3-in-1 Split Convertible Glass Shelving converts to 3 or 6-bottle wine rack
- Two-stage, white theater-style LED lighting and midnight black interior
- Solid black shelf fronts
- Easy-to-install panel overlay option features soft-close integrated hinge for a truly flush fit with cabinetry
- 1-year warranty, 5-year sealed system parts warranty

Model	Finish	MAP	MSRP	Shipping wt. (lbs)
ML24WBG1RS	24" Marvel Wine/Beverage Dual Zone, Stainless Frame Glass Door, Right Integrated Hinge	\$2,699	\$2,999	160
ML24WBG1LS	24" Marvel Wine/Beverage Dual Zone, Stainless Frame Glass Door, Left Integrated Hinge	\$2,699	\$2,999	160
ML24WBF2RP	24" Marvel Wine/Beverage Dual Zone, Overlay Frame Glass Door, Right Integrated Hinge	\$2,819	\$3,129	160
ML24WBF2LP	24" Marvel Wine/Beverage Dual Zone, Overlay Frame Glass Door, Left Integrated Hinge	\$2,819	\$3,129	160
ML24WBP2RP	24" Marvel Wine/Beverage Dual Zone, Overlay Solid Panel Door, Right Integrated Hinge	\$2,819	\$3,129	160
ML24WBP2LP	24" Marvel Wine/Beverage Dual Zone, Overlay Solid Panel Door, Left Integrated Hinge	\$2,819	\$3,129	160

24" MARVEL PROFESSIONAL DUAL ZONE WINE AND BEVERAGE CENTER



- This versatile model can store a full selection of wine, beer, liquor, mixers, party platters and more
- Capable of storing up to 64 cans, 16 wine bottles and two upright 2L bottles.
- Two independently-controlled temperature zones
- Select a precise temperature for each zone with multifunction controls
- Full extension shelving on wine and bottom shelf
- Theater-style display lighting
- Soft-close integrated hinge
- Features an elegant midnight black interior and tri-color lighting with three settings: sapphire blue, arctic white or amber glow
- Door lock to protect your collection
- 2-year warranty with bonus 1-year with product registration

Model	Finish	UMRP	MSRP	Shipping wt. (lbs)
MP24WBG4RS	24" Marvel Professional Dual Zone Wine and Beverage Center, Stainless Steel Frame Door With Lock, Integrated Right Hinge	\$3,359	\$3,729	160
MP24WBG4LS	24" Marvel Professional Dual Zone Wine and Beverage Center, Stainless Steel Frame Door With Lock, Integrated Left Hinge	\$3,359	\$3,729	160
MP24WBF4RP	24" Marvel Professional Dual Zone Wine and Beverage Center, Panel Ready Glass Frame Door With Lock, Integrated Right Hinge	\$3,359	\$3,729	160
MP24WBF4LP	24" Marvel Professional Dual Zone Wine and Beverage Center, Panel Ready Glass Frame Door With Lock, Integrated Left Hinge	\$3,359	\$3,729	160

MARVEL BEVERAGE CENTERS

15" MARVEL BEVERAGE CENTERS



- Dynamic cooling technology delivers precise temperature stability
- Frost free with temperature range between 34° and 42° F
- Thermal-efficient insulated cabinet with tinted, UV-resistant glass door
- 2.7 cu. ft. capacity, stores up to (35) 12-oz cans and/or 6 wine bottles
- 1 glass frame shelf with wine bottle cutout, one glass frame shelf, both with black maple fronts
- Fully adjustable shelving system with two cantilevered, full-width steel-framed glass shelves
- Two-stage, arctic white theater-style LED lighting and midnight black interior
- Close Door Assist hinge system (panel overlay option has soft-close integrated hinge)
- Audible and visual alarms for door ajar and high/low temperature
- Filler kit available for 18" wide opening
- 1-year warranty, 5-year sealed system parts warranty

Model	Finish	MAP	MSRP	Shipping wt. (lbs)
ML15BCG2RS	15" Marvel Beverage Center, Stainless Frame Glass Door, Right Hinge	\$1,729	\$1,879	125
ML15BCG2LS	15" Marvel Beverage Center, Stainless Frame Glass Door, Left Hinge	\$1,729	\$1,879	125
ML15BCG2RB	15" Marvel Beverage Center, Smooth Black Frame Glass Door, Right Hinge	\$1,729	\$1,879	125
ML15BCG2LB	15" Marvel Beverage Center, Smooth Black Frame Glass Door, Left Hinge	\$1,729	\$1,879	125
ML15BCF3RP	15" Marvel Beverage Center, Panel Overlay Frame Glass Door, Integrated Right Hinge	\$1,829	\$1,989	125
ML15BCF3LP	15" Marvel Beverage Center, Panel Overlay Frame Glass Door, Integrated Left Hinge	\$1,829	\$1,989	125
ML15BCP3RP	15" Marvel Beverage Center, Solid Panel Overlay Ready Door, Integrated Right Hinge	\$1,829	\$1,989	125
ML15BCP3LP	15" Marvel Beverage Center, Solid Panel Overlay Ready Door, Integrated Left Hinge	\$1,829	\$1,989	125

15" MARVEL PROFESSIONAL BEVERAGE CENTER - NEW



- Dynamic cooling technology delivers precise temperature stability
- Multifunction controls allow you to select a precise cabinet temperature from 33°F to 70° F
- Up to (35) 12-oz cans and 6 wine bottles
- Thermal-efficient insulated cabinet with tinted, UV-resistant glass door
- (2) 3-in-1 convertible shelves to convert to wine storage
- 1" stainless shelf fronts
- 4" adjustable stainless flat toe grill
- Theater-style display lighting
- Features an elegant midnight black interior and dual-color lighting options in sapphire blue or arctic white
- Door lock to protect your collection
- Soft-close integrated hinge
- Door ajar and high/low temperature alerts
- 2-year warranty with bonus 1-year with product registration

Model	Finish	UMRP	MSRP	Shipping wt. (lbs)
MPBV415SG31A	15" Marvel Professional Beverage Center Stainless, Glass Door, Lock, Reversible Door	\$2,159	\$2,399	118
MPBV415IG31A	15" Marvel Professional Beverage Center Panel Ready, Glass Door, Lock, Reversible Door	\$2,109	\$2,339	118
MPBV415SS31A	15" Marvel Professional Beverage Center Stainless, Solid Door, Lock, Reversible Door	\$2,059	\$2,289	118
MPBV415IS31A	15" Marvel Professional Beverage Center Panel Ready, Solid Door, Lock, Reversible Door	\$2,009	\$2,229	118

MARVEL BEVERAGE CENTERS

24" MARVEL BEVERAGE CENTER



- Forced air cooling technology rapidly cools and ensures precise temperature stability
- Electronic controls allow you to select a temperature setting between 34°F to 60°F
- Three adjustable and removable glass shelves
- Bottom wine storage accommodates even larger bottles, including magnums
- Daylight LED white lighting illuminates the rich midnight black interior
- UV-resistant dual pane glass
- Decorative stainless steel handle
- Reversible door
- 1-year parts and labor warranty, 5-year sealed system parts warranty

Model	Finish	MAP	MSRP	Shipping wt. (lbs)
MLBV024SG01A	24" Marvel Beverage Center, Stainless Steel Frame Door, UV Protected Glass, Field Reversible Door	\$1,299	\$1,449	123

24" MARVEL BEVERAGE CENTER



- Dynamic cooling technology delivers precise temperature stability
- Frost free with temperature range between 34° and 42° F
- Thermal-efficient insulated cabinet with tinted, UV-resistant glass door
- (2) Black Fresh Flo metal cantilever adjustable shelves
- (1) Bottom shelf
- 4" adjustable black flat toe grill
- White incandescent interior display lighting
- Marvel prime controls
- Close Door Assist hinge system
- Audible and visual alarms for door ajar and high/low temperature
- 1-year warranty, 5-year sealed system parts warranty

Model	Finish	MAP	MSRP	Shipping wt. (lbs)
ML24BCG0RS	24" Marvel Beverage Center, Stainless Frame Glass Door, Right Hinge	\$1,479	\$1,639	160
ML24BCG0LS	24" Marvel Beverage Center, Stainless Frame Glass Door, Left Hinge	\$1,479	\$1,639	160

MARVEL BEVERAGE CENTERS

24" MARVEL BEVERAGE CENTER



- Dynamic cooling technology delivers precise temperature stability
- Frost free with temperature range between 34° and 42° F
- Thermal-efficient insulated cabinet with tinted, UV-resistant glass door
- Up to (162) 12-oz cans or (18) wine bottles
- 1 roller-glide 4-bottle wine rack
- 2 cantilevered, full-width 3-in-1 Split Convertible Shelf
- 1.25" solid black stained maple shelf fronts
- 4" adjustable black flat toe grill
- White LED theatre-style dual-level lighting with Marvel Intuit temperature controls
- Close Door Assist hinge system
- Audible and visual alarms for door ajar and high/low temperature
- 1-year warranty, 5-year sealed system parts warranty

Model	Finish	MAP	MSRP	Shipping wt. (lbs)
ML24BCG1RS	24" Marvel High Efficiency Beverage Center, Stainless Frame Glass Door, Right Hinge	\$1,779	\$1,939	160
ML24BCG1LS	24" Marvel High Efficiency Beverage Center, Stainless Frame Glass Door, Left Hinge	\$1,779	\$1,939	160
ML24BCF2RP	24" Marvel High Efficiency Beverage Center, Overlay Frame, Glass Door, Right Integrated Hinge	\$1,889	\$2,059	160
ML24BCF2LP	24" Marvel High Efficiency Beverage Center, Overlay Frame, Glass Door, Left Integrated Hinge	\$1,889	\$2,059	160
ML24BCP2RP	24" Marvel High Efficiency Beverage Center, Solid Overlay Panel, Right Integrated Hinge	\$1,889	\$2,059	160
ML24BCP2LP	24" Marvel High Efficiency Beverage Center, Solid Overlay Panel, Left Integrated Hinge	\$1,889	\$2,059	160

MARVEL BEVERAGE CENTERS

24" MARVEL PROFESSIONAL BEVERAGE CENTER - NEW



- Dynamic cooling technology delivers precise temperature stability
- Multifunction controls allow you to select a precise cabinet temperature from 33°F to 70° F
- Thermal-efficient insulated cabinet with tinted, UV-resistant glass door
- Two 3-in-1 convertible adjustable, glass slide-out shelves with wine cut outs, full extensions glide-out ball bearing shelves
- Roll-out bottom display wine rack
- 1" stainless shelf fronts
- 4" adjustable stainless flat toe grill
- Theater-style display lighting
- Features an elegant midnight black interior and dual-color lighting options in sapphire blue or arctic white
- Door lock to protect your collection
- Soft-close integrated hinge
- Door ajar and high/low temperature alerts
- 2-year warranty with bonus 1-year with product registration

Model	Finish	UMRP	MSRP	Shipping wt. (lbs)
MPBV424SG31A	24" Marvel Professional Beverage Center, Stainless, Glass Door, Lock, Reversible Door	\$2,479	\$2,759	154
MPBV424IG31A	24" Marvel Professional Beverage Center, Panel Ready, Glass Door, Lock, Reversible Door	\$2,429	\$2,699	154
MPBV424SS31A	24" Marvel Professional Beverage Center, Stainless, Solid Door, Lock, Reversible Door	\$2,379	\$2,639	154
MPBV424IS31A	24" Marvel Professional Beverage Center, Panel Ready, Solid Door, Lock, Reversible Door	\$2,329	\$2,589	154

MARVEL REFRIGERATORS

15" MARVEL REFRIGERATOR



- Dynamic cooling technology delivers precise temperature stability
- Frost free with temperature range between 34° and 42° F
- Thermal-efficient insulated cabinet
- 2 cantilever fully adjustable glass shelves
- 1 bottom storage area
- 4" adjustable black flat toe grill
- White LED lighting illuminates the arctic white interior for better viewing
- Close Door Assist hinge system (panel overlay option has soft-close integrated hinge)
- Audible and visual alarms for door ajar and high/low temperature
- Filler kit available for 18" wide opening
- 1-year warranty, 5-year sealed system parts warranty

Model	Finish	MAP	MSRP	Shipping wt. (lbs)
ML15RAS1RS	15" Marvel Refrigerator, Solid Stainless Steel Door, Right Hinge	\$1,509	\$1,679	125
ML15RAS1LS	15" Marvel Refrigerator, Solid Stainless Steel Door, Left Hinge	\$1,509	\$1,679	125
ML15RAS1RB	15" Marvel Refrigerator, Smooth Black Door, Right Hinge	\$1,509	\$1,679	125
ML15RAS1LB	15" Marvel Refrigerator, Smooth Black Door, Left Hinge	\$1,509	\$1,679	125
ML15RAP2RP	15" Marvel Refrigerator, Solid Panel Overlay Ready Door, Integrated Right Hinge	\$1,609	\$1,799	125
ML15RAP2LP	15" Marvel Refrigerator, Solid Panel Overlay Ready Door, Integrated Left Hinge	\$1,609	\$1,799	125

24" MARVEL REFRIGERATOR



- Dynamic cooling technology delivers precise temperature stability
- Frost free with temperature range between 34° and 42° F
- Thermal-efficient insulated cabinet
- 2 cantilever, fully adjustable FreshFlo white commercial-grade steel shelves
- 4" adjustable black flat toe grill
- White LED display lighting and Marvel Intuit temperature controls
- Arctic white interior easily wipes clean and illuminates interior for better viewing
- Close Door Assist hinge system
- Audible and visual alarms for door ajar and high/low temperature
- 1-year warranty, 5-year sealed system parts

Model	Finish	MAP	MSRP	Shipping wt. (lbs)
ML24RAS1RS	24" Marvel Refrigerator, Solid Stainless Steel Door, Right Hinge	\$1,609	\$1,799	160
ML24RAS1LS	24" Marvel Refrigerator, Solid Stainless Steel Door, Left Hinge	\$1,609	\$1,799	160

MARVEL REFRIGERATORS

24" MARVEL REFRIGERATOR WITH MAXSTORE BIN



- Dynamic cooling technology delivers precise temperature stability
- Frost free with temperature range between 34° and 42° F
- Thermal-efficient insulated cabinet
- 1 full-width and (1) half-width cantilevered, fully adjustable glass shelves encapsulated in commercial-quality white steel
- 1 fixed glass shelf encapsulated in commercial-quality white steel
- MaxStore roller-glide clear bin
- 4" adjustable black flat toe grill
- White LED lighting with Marvel Intuit temperature controls
- Arctic white interior easily wipes clean and illuminates interior for better viewing
- Close Door Assist hinge system (panel overlay option has soft-close integrated hinge)
- Audible and visual alarms for door ajar and high/low temperature
- 1-year warranty, 5-year sealed system parts

Model	Finish	MAP	MSRP	Shipping wt. (lbs)
ML24RAS2RS	24" Marvel Refrigerator with MaxStore Bin, Solid Stainless Steel Door, Right Hinge	\$1,839	\$2,049	160
ML24RAS2LS	24" Marvel Refrigerator with MaxStore Bin, Solid Stainless Steel Door, Left Hinge	\$1,839	\$2,049	160
ML24RAS2RB	24" Marvel Refrigerator with MaxStore Bin, Smooth Black Door, Right Hinge	\$1,839	\$2,049	160
ML24RAS2LB	24" Marvel Refrigerator with MaxStore Bin, Smooth Black Door, Right Hinge	\$1,839	\$2,049	160
ML24RAP3RP	24" Marvel Refrigerator with MaxStore Bin, Solid Panel Overlay Door, Integrated Right Hinge	\$1,939	\$2,159	160
ML24RAP3LP	24" Marvel Refrigerator with MaxStore Bin, Solid Panel Overlay Door, Integrated Left Hinge	\$1,939	\$2,159	160

MARVEL REFRIGERATORS

24" MARVEL HIGH-EFFICIENCY BEVERAGE REFRIGERATOR WITH MAXSTORE BIN



- Dynamic cooling technology delivers precise temperature stability
- Frost free with temperature range between 34° and 42° F
- Thermal-efficient insulated cabinet with tinted, UV-resistant glass door
- Stores up to 7 wine bottles
- 1 full-width 3-in-1 Split Convertible Shelf encapsulated in commercial-grade black steel
- 1 half-width cantilevered glass shelf encapsulated in black commercial-grade black steel
- 1 fixed-glass shelf encapsulated in commercial-quality black steel
- MaxStore roller-glide clear bin
- 1.25" solid black stained maple shelf fronts
- 4" adjustable black flat toe grill
- White LED theatre-style dual-level lighting with Marvel Intuit temperature controls
- Close Door Assist hinge system (panel overlay option has soft-close integrated hinge)
- Audible and visual alarms for door ajar and high/low temperature
- 1-year warranty, 5-year sealed system parts

Model	Finish	MAP	MSRP	Shipping wt. (lbs)
ML24BRG2RS	24" Marvel Beverage Refrigerator w/MaxStore Bin, Stainless Frame Glass Door, Right Hinge	\$1,989	\$2,209	160
ML24BRG2LS	24" Marvel Beverage Refrigerator w/MaxStore Bin, Stainless Frame Glass Door, Left Hinge	\$1,989	\$2,209	160
ML24BRG2RB	24" Marvel Beverage Refrigerator w/MaxStore Bin, Smooth Black Frame Glass Door, Right Hinge	\$1,989	\$2,209	160
ML24BRG2LB	24" Marvel Beverage Refrigerator w/MaxStore Bin, Smooth Black Frame Glass Door, Left Hinge	\$1,989	\$2,209	160
ML24BRF3RP	24" Marvel Beverage Refrigerator w/MaxStore Bin, Panel Overlay Frame Glass Door, Integrated Right Hinge	\$2,139	\$2,369	160
ML24BRF3LP	24" Marvel Beverage Refrigerator w/MaxStore Bin, Panel Overlay Frame Glass Door, Integrated Left Hinge	\$2,139	\$2,369	160
ML24BRP3RP	24" Marvel Beverage Refrigerator w/MaxStore Bin, Solid Panel Overlay Ready Door, Integrated Right Hinge	\$2,139	\$2,369	160
ML24BRP3LP	24" Marvel Beverage Refrigerator w/MaxStore Bin, Solid Panel Overlay Ready Door, Integrated Left Hinge	\$2,139	\$2,369	160

24" MARVEL PROFESSIONAL REFRIGERATOR WITH MAXSTORE BIN - NEW



- Dynamic cooling technology delivers precise temperature stability
- Multifunction controls allow you to select a precise cabinet temperature from 33°F to 70° F
- Up to 20 wine bottles total and up to (162) 12-oz cans
- Thermal-efficient insulated cabinet with tinted, UV-resistant glass door
- Exclusive 3-in-1 convertible roll out glass shelf and 1 half-width cantilevered fully adjustable glass shelf
- Full extension glide-out ball bearing shelf
- MaxStore roller-glide clear bin
- 1 framed flat glass crisper cover (non-adjustable)
- 1" stainless shelf fronts
- 4" adjustable stainless flat toe grill
- Theater-style display lighting
- Features an elegant midnight black interior and dual-color lighting options in sapphire blue or arctic white
- Door lock to protect your collection
- Soft-close integrated hinge
- Door ajar and high/low temperature alerts
- 2-year warranty with bonus 1-year with product registration

Model	Finish	UMRP	MSRP	Shipping wt. (lbs)
MPRE424SG31A	24" Marvel Professional Refrigerator with MaxStore Bin, Stainless, Glass Door, Lock, Reversible Door	\$2,599	\$2,889	154
MPRE424IG31A	24" Marvel Professional Refrigerator with MaxStore Bin, Panel Ready, Glass Door, Lock, Reversible Door	\$2,549	\$2,829	154
MPRE424SS31A	24" Marvel Professional Refrigerator with MaxStore Bin, Stainless, Solid Door, Lock, Reversible Door	\$2,499	\$2,779	154
MPRE424IS31A	24" Marvel Professional Refrigerator with MaxStore Bin, Panel Ready, Solid Door, Lock, Reversible Door	\$2,449	\$2,719	154

MARVEL REFRIGERATOR DRAWERS

24" MARVEL REFRIGERATED DRAWERS



- Dynamic cooling technology delivers precise temperature stability
- Frost free with temperature range between 34° and 42° F
- Thermal-efficient insulated cabinet
- 4" adjustable black flat toe grill
- 5.0 cu. ft. capacity, stores (108) 12-oz cans in two large-capacity roller-glide drawers
- Adjustable grip divider included in top drawer to organize and secure contents
- White LED lighting illuminates the arctic white interior for better viewing
- Audible and visual alarms for door ajar and high/low temperature
- Close Door Assist System
- 1-year warranty, 5-year sealed system parts

Model	Finish	MAP	MSRP	Shipping wt. (lbs)
ML24RDS3NS	24" Marvel Refrigerated Drawers, Solid Stainless Steel Drawer Front	\$2,599	\$2,889	160
ML24RDS3NB	24" Marvel Refrigerated Drawers, Solid Black Drawer Front, Black Handles	\$2,599	\$2,889	160
ML24RDP3NP	24" Marvel Refrigerated Drawers, Solid Panel Ready Drawer Front	\$2,599	\$2,889	160

24" MARVEL PROFESSIONAL REFRIGERATED DRAWERS - NEW



- Dynamic cooling technology delivers precise temperature stability
- Multifunction controls allow you to select a precise cabinet temperature from 33°F to 70° F
- Thermal-efficient insulated cabinet
- Drawer lock is standard
- 4" adjustable stainless flat toe grill
- Adjustable divider included in the top and bottom drawers
- Theater-style display lighting
- Features an elegant midnight black interior and dual-color lighting options in sapphire blue or arctic white
- Elegant midnight black cabinet interior with sleek hygienic stainless steel drawers
- Soft-close System
- Door ajar and high/low temperature alerts
- 2-year warranty with bonus 1-year with product registration

Model	Finish	UMRP	MSRP	Shipping wt. (lbs)
MPDR424SS71A	24" Marvel Professional Refrigerated Drawers, Solid Stainless Steel Drawer Fronts, With Lock	\$3,359	\$3,729	141
MPDR424IS71A	24" Marvel Professional Refrigerated Drawers, Solid Panel Overlay Ready Drawer Fronts, With Lock	\$3,309	\$3,679	141

MARVEL REFRIGERATOR / FREEZER

24" MARVEL REFRIGERATOR FREEZER WITH MAX STORE BIN



- Dynamic cooling technology delivers precise temperature stability
- Marvel Intuit integrated controls ensure precise refrigeration temperature management from 34°F to 42°F and freezer a temperature between -6° F and 6° F to keep contents evenly frozen throughout
- Thermal-efficient insulated cabinet
- Top-mounted vertical freezer with self-closing door
- 2 half-width cantilever, fully adjustable glass shelves encapsulated in commercial-grade white steel
- 1 full-width position glass shelf encapsulated in commercial-grade white steel
- MaxStore roller-glide clear bin
- 4" adjustable black flat toe grill
- White LED lighting with Marvel Intuit temperature controls
- Arctic white interior easily wipes clean and illuminates interior for better viewing
- Close Door Assist Hinge system (panel overlay option has soft-close integrated hinge)
- Audible and visual alarms for door ajar and high/low temperature
- Field installable ice maker kit available (accessory part #S42418151)
- 1-year warranty, 5-year sealed system parts

Model	Finish	MAP	MSRP	Shipping wt. (lbs)
ML24RFS3RS	24" Marvel Refrigerator Freezer With Maxstore Bin, Solid Stainless Steel Door, Right Hinge	\$2,109	\$2,339	160
ML24RFS3LS	24" Marvel Refrigerator Freezer With Maxstore Bin, Solid Stainless Steel Door, Left Hinge	\$2,109	\$2,339	160
ML24RFP4RP	24" Marvel Refrigerator Freezer With Maxstore Bin, Solid Panel Ready Overlay Door, Integrated Right Hinge	\$2,269	\$2,519	160
ML24RFP4LP	24" Marvel Refrigerator Freezer With Maxstore Bin, Solid Panel Ready Overlay Door, Integrated Left Hinge	\$2,269	\$2,519	160

24" MARVEL REFRIGERATOR FREEZER, WITH ICE MAKER AND MAX STORE BIN



- Dynamic cooling technology delivers precise temperature stability
- Marvel Intuit integrated controls ensure precise refrigeration temperature management from 34°F to 42°F and freezer a temperature between -6° F and 6° F to keep contents evenly frozen throughout thermal-efficient insulated cabinet
- Top-mounted vertical freezer with self-closing door
- 2 half-width cantilever, fully adjustable glass shelves encapsulated in commercial-grade white steel
- Top-mounted vertical freezer with crescent ice maker, ice bucket and self-closing door
- Crescent ice maker provides up to 7 lbs of ice in 24 hours
- 1 full-width fixed position glass shelf encapsulated in commercial-grade white steel
- MaxStore roller-glide clear bin
- 4" adjustable black flat toe grill
- White LED lighting with Marvel Intuit temperature controls
- Arctic white interior easily wipes clean and illuminates interior for better viewing
- Close Door Assist hinge system (panel overlay option has soft-close integrated hinge)
- Audible and visual alarms for door ajar and high/low temperature
- 1-year warranty, 5-year sealed system parts

Model	Finish	MAP	MSRP	Shipping wt. (lbs)
ML24RIS4RS	24" Marvel Refrigerator Freezer Crescent Ice Maker, Solid Stainless Steel Door, Right Hinge	\$2,379	\$2,639	160
ML24RIS4LS	24" Marvel Refrigerator Freezer Crescent Ice Maker, Solid Stainless Steel Door, Left Hinge	\$2,379	\$2,639	160
ML24RIP5RP	24" Marvel Refrigerator Freezer Crescent Ice Maker, Solid Panel Ready Overlay Door, Integrated Right Hinge	\$2,479	\$2,759	160
ML24RIP5LP	24" Marvel Refrigerator Freezer Crescent Ice Maker, Solid Panel Ready Overlay Door, Integrated Left Hinge	\$2,479	\$2,759	160

MARVEL ALL FREEZER

24" MARVEL ALL FREEZER



- Dynamic cooling technology delivers precise temperature stability
- Marvel Intuit integrated controls ensure precise temperature management from -10 to 10° F (-23.3 to -12.2°C) to keep contents evenly frozen
- Thermal-efficient insulated cabinet
- Durable top shelf constructed of heavy-duty FreshFlo steel, designed for efficient air flow and more even temperature
- Keep items organized and within easy reach with two commercial-grade chrome wire freezer bins on the fully extendable Smooth Glide System
- 4" adjustable black flat toe grill
- White LED lighting with Marvel Intuit temperature controls
- Arctic white interior easily wipes clean and illuminates interior for better viewing
- Close Door Assist™ hinge system (panel overlay option has soft-close integrated hinge)
- Audible and visual alarms for door ajar and high/low temperature
- 1-year warranty, 5-year sealed system parts

Model	Finish	MAP	MSRP	Shipping wt. (lbs)
ML24FAS1RS	24" Marvel All Freezer, Stainless Steel Door, Right Hinge	\$2,599	\$2,889	160
ML24FAS1LS	24" Marvel All Freezer, Stainless Steel Door, Left Hinge	\$2,599	\$2,889	160
ML24FAP2RP	24" Marvel All Freezer, Panel Overlay Door, Integrated Right Hinge	\$2,699	\$2,999	160
ML24FAP2LP	24" Marvel All Freezer, Panel Overlay Door, Integrated Left Hinge	\$2,699	\$2,999	160

24" MARVEL PROFESSIONAL ALL FREEZER - NEW



- Dynamic cooling technology delivers precise temperature stability
- Integrated control ensures precise temperature management from -10 to 10° F (-23.3 to -12.2°C) to keep contents evenly frozen
- 3 full size commercial-grade slide-out baskets
- Thermal-efficient insulated cabinet
- 4" adjustable stainless flat toe grill
- Frost-free operation and tested to hold up to 200 lbs of frozen goods
- Theater-style display lighting
- Features an elegant midnight black interior and dual-color lighting options in sapphire blue or arctic white
- Door lock to protect your collection
- Soft-close integrated hinge
- Door ajar and high/low temperature alerts
- 2-year warranty with bonus 1-year with product registration

Model	Finish	UMRP	MSRP	Shipping wt. (lbs)
MPFZ424SS31A	24" Marvel Professional Freezer, Stainless Steel Door, Field Reversible Hinge	\$2,979	\$3,309	160
MPFZ424IS31A	24" Marvel Professional Freezer, Solid Panel Overlay Door, Field Reversible Hinge	\$2,829	\$3,139	160

MARVEL ICE MACHINES

15" MARVEL INDOOR UNDERCOUNTER CRESCENT ICE MACHINE



- 2x more ice production than before
- Produces up to 25 lbs of crescent ice per day and stores 25 lbs of crescent ice
- Removable ice bin for convenient access and easier cleaning
- Four 1" leveling legs are independently adjustable for precise built-in installation
- No pump or drain required
- Crescent ice cube dimensions: 1/2" W x 3/4" H x 2 1/4" L
- Field reversible door for added flexibility
- 4" black adjustable toe kick
- 1-year parts and labor warranty, 5-year sealed system parts warranty

Model	Finish	MAP	MSRP	Shipping wt. (lbs)
ML15CRS1XS	15" Marvel Indoor Undercounter Crescent Ice Machine, Solid Stainless Door, Reversible Hinge	\$2,029	\$2,259	106
ML15CRS1XB	15" Marvel Indoor Undercounter Crescent Ice Machine, Solid Smooth Black Door, Reversible Hinge	\$1,919	\$2,139	106
ML15CRP1XP	15" Marvel Indoor Undercounter Crescent Ice Machine, Solid Panel Ready Door, Reversible Hinge	\$1,879	\$2,089	106

15" MARVEL INDOOR CLEAR ICE MACHINE, GRAVITY DRAIN



- The quietest ice machine you can buy
- Produces up to 39 pounds of clear ice daily, the equivalent of nearly eight convenience-store bags of ice
- Large-capacity bin stores 35 pounds of clear ice, while preserving quality and assuring fresh ice production
- Illuminice feature projects arctic white LED light through clear ice for a dazzling illumination effect
- Marvel Intuit Integrated Controls feature all-new settings for ultimate programmability
- First-ever glass door model with midnight black interior adds drama to entertaining at home
- Gravity drain
- Close Door Assist System prevents energy loss by automatically drawing door to a gentle close
- Engineered to consistently produce pure, clear ice with unrivaled clarity, immediate cooling and slower melt
- Energy-saving options conserve water and electricity
- Eco Ice mode moderates ice production to conservative usage, saving 25% water (91 gallons monthly) and 25% energy (\$45 annually)
- Black toe kick adjustable to 4" with leveling legs
- 1-year parts and labor warranty, 5-year sealed system parts warranty

Model	Finish	MAP	MSRP	Shipping wt. (lbs)
ML15CLS2RS	15" Marvel Indoor Clear Ice Machine, No Pump, Gravity Drain, Solid Stainless Door, Right Hinge	\$2,369	\$2,639	127
ML15CLS2LS	15" Marvel Indoor Clear Ice Machine, No Pump, Gravity Drain, Solid Stainless Door, Left Hinge	\$2,369	\$2,639	127
ML15CLS2RB	15" Marvel Indoor Clear Ice Machine, No Pump, Gravity Drain, Solid Black Door, Right Hinge	\$2,369	\$2,639	127
ML15CLS2LB	15" Marvel Indoor Clear Ice Machine, No Pump, Gravity Drain, Solid Black Door, Left Hinge	\$2,369	\$2,639	127
ML15CLP3RP	15" Marvel Indoor Clear Ice Machine, No Pump, Gravity Drain, Solid Panel Ready Door, Integrated Right Hinge	\$2,479	\$2,759	127
ML15CLP3LP	15" Marvel Indoor Clear Ice Machine, No Pump, Gravity Drain, Solid Panel Ready Door, Integrated Right Hinge	\$2,479	\$2,759	127

MARVEL ICE MACHINES

15" MARVEL INDOOR CLEAR ICE MACHINES WITH FACTORY INSTALLED DRAIN PUMP



- The quietest ice machine you can buy
- Produces up to 39 pounds of clear ice daily, the equivalent of nearly eight convenience-store bags of ice
- Large-capacity bin stores 35 pounds of clear ice, while preserving quality and assuring fresh ice production
- Illuminice feature projects waterproof LED light through clear ice for a dazzling illumination effect
- Marvel Intuit Integrated Controls feature all-new settings for ultimate programmability
- First-ever glass door model with midnight black interior adds drama to entertaining at home
- Factory installed drain pump
- Close Door Assist System prevents energy loss by automatically drawing door to a gentle close
- Engineered to consistently produce pure, clear ice with unrivaled clarity, immediate cooling and slower melt
- Energy-saving options conserve water and electricity
- Eco Ice mode moderates ice production to conservative usage, saving 25% water (91 gallons monthly) and 25% energy (\$45 annually)
- Black toe kick adjustable to 4" with leveling legs
- 1-year parts and labor warranty, 5-year sealed system parts warranty

Model	Finish	MAP	MSRP	Shipping wt. (lbs)
ML15CPS2RS	15" Marvel Indoor Clear Ice Machine with Pump, Solid Stainless Door, Right Hinge	\$2,699	\$2,949	127
ML15CPS2LS	15" Marvel Indoor Clear Ice Machine with Pump, Solid Stainless Door, Left Hinge	\$2,699	\$2,949	127
ML15CPS2RB	15" Marvel Indoor Clear Ice Machine with Pump, Solid Black Door, Right Hinge	\$2,699	\$2,949	127
ML15CPS2LB	15" Marvel Indoor Clear Ice Machine with Pump, Solid Black Door, Left Hinge	\$2,699	\$2,949	127
ML15CPP3RP	15" Marvel Indoor Clear Ice Machine with Pump, Solid Panel y Ready Door, Inergrated Right Hinge	\$2,819	\$3,129	127
ML15CPP3LP	15" Marvel Indoor Clear Ice Machine with Pump, Solid Panel Ready Door, Integrated Left Hinge	\$2,819	\$3,129	127

15" MARVEL PROFESSIONAL CLEAR ICE MACHINE WITH FACTORY INSTALLED DRAIN PUMP



- The quietest ice machine you can buy
- Produces up to 39 pounds of clear ice daily, the equivalent of nearly eight convenience-store ice bags
- Engineered to consistently produce pure, clear ice with unrivaled clarity, immediate cooling and slower melt
- Illuminice feature projects waterproof LED light through clear ice for a dazzling illumination effect
- At the touch of a button, change the interior light color to sapphire blue, amber glow, or arctic white
- Midnight black interior and the first-ever glass door option add drama to the ice presentation, perfect for entertaining
- Factory installed drain pump
- Large-capacity bin stores 35 pounds of clear ice, while preserving quality and assuring fresh ice production
- Its uniform size and compact density prove to be the optimal shape to provide faster cooling, while taking up less space in your glass
- Eco Ice mode moderates ice production to conserve usage—saving 25% water (91 gallons monthly) and 25% energy (\$45 annually)
- Close Door Assist System prevents energy loss by automatically drawing door to a gentle close
- Energy-saving options conserve water and electricity
- 3-year parts and labor warranty, 5-year sealed system parts warranty

Model	Finish	UMRP	MSRP	Shipping wt. (lbs)
MP15CPS3RS	15" Marvel Professional Indoor Clear Ice Machine, with Pump, Solid Stainless Door, Right Hinge	\$2,919	\$3,239	127
MP15CPS3LS	15" Marvel Professional Indoor Clear Ice Machine, with Pump, Solid Stainless Door, Right Hinge	\$2,919	\$3,239	127
MP15CPP3RP	15" Marvel Professional Indoor Clear Ice Machine, with Pump, Overlay, Right Integrated Hinge	\$2,919	\$3,239	127
MP15CPP3LP	15" Marvel Professional Indoor Clear Ice Machine, with Pump, Overlay, Left Integrated Hinge	\$2,919	\$3,239	127

MARVEL GLASS DOOR ICE MACHINES

15" MARVEL INDOOR GLASS DOOR CLEAR ICE MACHINES GRAVITY DRAIN



- The quietest ice machine you can buy
- Produces up to 39 pounds of clear ice daily, the equivalent of nearly eight convenience-store ice bags
- New energy-saving options conserve water and electricity
- Stores 35 pounds of clear ice in thermal-insulated ice bin
- Multifunction Marvel Intuit Integrated Controls adapt ice production to usage needs
- Glass door showcases new Illuminice feature that projects arctic white LED lighting through clear ice for a dazzling illumination effect
- Gravity drain
- Engineered to consistently produce pure, clear ice with unrivaled clarity, immediate cooling and slower melt
- Eco Ice and Vacation/Delay Start modes save up to 25% water and electricity
- Close Door Assist System prevents energy loss by automatically drawing door to a gentle close
- Designer handle and adjustable black toe kick
- Height adjustable up to 1" with leveling legs
- Audible alerts and programmed cleaning reminders
- 1-year parts and labor warranty, 5-year sealed system parts warranty

Model	Finish	MAP	MSRP	Shipping wt. (lbs)
ML15CLG2RS	15" Marvel Indoor Glass Door Clear Ice Machine, Gravity Drain, Solid Stainless Door, Right Hinge	\$2,699	\$3,019	127
ML15CLG2LS	15" Marvel Indoor Glass Door Clear Ice Machine, Gravity Drain, Solid Stainless Door, Left Hinge	\$2,699	\$3,019	127

15" MARVEL INDOOR GLASS DOOR CLEAR ICE MACHINES WITH FACTORY INSTALLED DRAIN PUMP



- The quietest ice machine you can buy
- Produces up to 39 pounds of clear ice daily, the equivalent of nearly eight convenience-store ice bags
- New energy-saving options conserve water and electricity
- Stores 35 pounds of clear ice in thermal-insulated ice bin
- Multifunction Marvel Intuit Integrated Controls adapt ice production to usage needs
- Glass door showcases new Illuminice feature that projects arctic white LED lighting through clear ice for a dazzling illumination effect
- Factory installed drain pump
- Engineered to consistently produce pure, clear ice with unrivaled clarity, immediate cooling and slower melt
- Eco Ice and Vacation/Delay Start modes save up to 25% water and electricity
- Close Door Assist System prevents energy loss by automatically drawing door to a gentle close
- Designer handle and adjustable black toe kick
- Height adjustable up to 1" with leveling legs
- Audible alerts and programmed cleaning reminders
- 1-year parts and labor warranty, 5-year sealed system parts warranty

Model	Finish	MAP	MSRP	Shipping wt. (lbs)
ML15CPG2RS	15" Marvel Indoor Glass Door Clear Ice Machine, with Pump, Solid Stainless Door, Right Hinge	\$3,029	\$3,349	127
ML15CPG2LS	15" Marvel Indoor Glass Door Clear Ice Machine, with Pump, Solid Stainless Door, Left Hinge	\$3,029	\$3,349	127

MARVEL GLASS DOOR ICE MACHINES (NEW)

15" MARVEL PROFESSIONAL BUILT-IN GLASS DOOR CLEAR ICE MACHINE WITH TRI-COLOR ILLUMINICE WITH FACTORY INSTALLED DRAIN PUMP



- The quietest ice machine you can buy
- Produces up to 39 pounds of clear ice daily, the equivalent of nearly eight convenience-store ice bags
- Engineered to consistently produce pure, clear ice with unrivaled clarity, immediate cooling and slower melt
- Illuminice feature projects waterproof LED light through clear ice for a dazzling illumination effect
- At the touch of a button, change the interior light color to sapphire blue, amber glow, or arctic white
- Midnight black interior and the first-ever glass door option add drama to the ice presentation, perfect for entertaining
- Factory installed drain pump
- Large-capacity bin stores 35 pounds of clear ice, while preserving quality and assuring fresh ice production
- Its uniform size and compact density prove to be the optimal shape to provide faster cooling, while taking up less space in your glass
- Eco Ice mode moderates ice production to conserve usage—saving 25% water (91 gallons monthly) and 25% energy (\$45 annually)
- Marvel Intuit Integrated Controls feature all-new settings for ultimate programmability
- Close Door Assist System prevents energy loss by automatically drawing door to a gentle close
- Energy-saving options conserve water and electricity
- 1-year parts and labor warranty, 5-year sealed system parts warranty

Model	Finish	UMRP	MSRP	Shipping wt. (lbs)
MP15CPG3RS	15" Marvel Professional Built-In Glass Door Clear Ice Machine, with Pump, Stainless Frame Glass Door, Integrated Right Hinge	\$3,349	\$3,669	130
MP15CPG3LS	15" Marvel Professional Built-In Glass Door Clear Ice Machine, with Pump, Stainless Frame Glass Door, Integrated Left Hinge	\$3,349	\$3,669	130

MARVEL NUGGET ICE MACHINE

15" MARVEL NUGGET ICE MACHINE



- Preferred for its satisfying crunch, easy to chew texture and slow melt
- Adaptable ice density from soft to extra crunchy
- Commercially-rated to produce up to 90 pounds of nugget ice daily and stores 30 pounds
- Engineered for supremely efficient ice production to conserve water and energy consumption
- Shaped in bite-sized 3/4" L x 1/2" H cylindrical ice nuggets
- Digital touch controls with built-in cleaning alerts simplify ownership and maintenance
- Factory installed drain pump
- One of the easiest nugget ice machines to clean
- Midnight black interior with white LED lighting
- Field-reversible hinges and four leveling legs for adaptable installation
- Built-in or freestanding
- Available with stainless steel finish or easy-to-install panel ready option
- 1-year parts and labor warranty, 5-year sealed system parts warranty

Model	Finish	MAP	MSRP	Shipping wt. (lbs)
MLNP115SS01A	15" Marvel Nugget Ice Machine Stainless Steel, Field Reversible Door, with Pump	\$3,679	\$4,089	101
MLNP115IS01A	15" Marvel Nugget Ice Machine Panel Ready, Field Reversible Door, with Pump	\$3,489	\$3,859	101

MARVEL LOW PROFILE BEV, REFRIG & ICE MACHINES (ADA HEIGHT)

24" MARVEL LOW PROFILE ADA HEIGHT REFRIGERATOR



- Dynamic cooling technology delivers precise temperature stability
- Frost free with temperature range between 34° and 42° F
- Thermal-efficient insulated cabinet
- 2 cantilever, fully adjustable FreshFlo white commercial-grade steel shelves
- Door lock standard
- 4.7 cu ft capacity stores 190 12-oz cans
- 4" adjustable black flat toe grill
- White LED lighting with Marvel Intuit temperature controls
- Arctic white interior easily wipes clean and illuminates interior for better viewing
- Close Door Assist hinge system
- Audible and visual alarms for door ajar and high/low temperature
- 1-year warranty, 5-year sealed system parts

Model	Finish	MAP	MSRP	Shipping wt. (lbs)
MA24RAS1RS	24" Marvel Low Profile ADA Height Refrigerator, Stainless Door with Lock, Right Hinge	\$1,609	\$1,799	160
MA24RAS1LS	24" Marvel Low Profile ADA Height Refrigerator, Stainless Door with Lock, Left Hinge	\$1,609	\$1,799	160

24" MARVEL LOW PROFILE ADA HEIGHT REFRIGERATOR WITH MAXSTORE BIN



- Dynamic cooling technology delivers precise temperature stability
- Frost free with temperature range between 34° and 42° F
- Thermal-efficient insulated cabinet with tinted, UV-resistant glass door
- Door lock is standard
- 1 half-width cantilevered glass shelf encapsulated in commercial-quality white steel
- 1 full-width cantilevered, fully integrated shelf
- 1 fixed glass shelf encapsulated in commercial-quality white steel
- MaxStore roller-glide clear bin
- 1.25" solid black stained maple shelf fronts
- 4" adjustable black flat toe grill
- White LED theatre-style dual-level lighting with Marvel Intuit temperature controls
- Close Door Assist hinge system (panel overlay option has soft-close integrated hinge)
- Audible and visual alarms for door ajar and high/low temperature
- 1-year warranty, 5-year sealed system parts

Model	Finish	MAP	MSRP	Shipping wt. (lbs)
MA24RAS2RS	24" Marvel Low Profile ADA Height Refrigerator with MaxStore Bin, Solid Stainless Door with Lock, Right Hinge	\$1,889	\$2,109	160
MA24RAS2LS	24" Marvel Low Profile ADA Height Refrigerator with MaxStore Bin, Solid Stainless Door with Lock, Left Hinge	\$1,889	\$2,109	160
MA24RAS2RB	24" Marvel Low Profile ADA Height Refrigerator with MaxStore Bin, Smooth Black Door, with Lock, Right Hinge	\$1,889	\$2,109	160
MA24RAS2LB	24" Marvel Low Profile ADA Height Refrigerator with MaxStore Bin, Smooth Black Door, with Lock, Left Hinge	\$1,889	\$2,109	160
MA24RAP3RP	24" Marvel Low Profile ADA Height Refrigerator with MaxStore Bin, Solid Panel Ready with Lock, Integrated Right Hinge	\$2,109	\$2,339	160
MA24RAP3LP	24" Marvel Low Profile ADA Height Refrigerator with MaxStore Bin, Solid Panel Ready with Lock, Integrated Left Hinge	\$2,109	\$2,339	160

MARVEL LOW PROFILE BEV, REFRIG & ICE MACHINES (ADA HEIGHT)

24" MARVEL LOW PROFILE ADA HEIGHT BEVERAGE CENTER



- Dynamic cooling technology delivers precise temperature stability
- Frost free with temperature range between 34° and 42° F
- Thermal-efficient insulated cabinet with tinted, UV-resistant glass door
- Door lock is standard
- Stores 95 12-oz cans and/or 18 wine bottles
- 2 cantilever, fully adjustable FreshFlo black commercial-grade steel shelves
- 4" adjustable black flat toe grill
- White LED theatre-style dual-level lighting with Marvel Intuit temperature controls
- Close Door Assist™ hinge system
- Audible and visual alarms for door ajar and high/low temperature
- 1-year warranty, 5-year sealed system parts

Model	Finish	MAP	MSRP	Shipping wt. (lbs)
MA24BCG1RS	24" Marvel Low Profile ADA Height Beverage Center, Stainless Frame Glass Door with Lock, Right Hinge	\$1,729	\$1,919	160
MA24BCG1LS	24" Marvel Low Profile ADA Height Beverage Center, Stainless Frame Glass Door with Lock, Left Hinge	\$1,729	\$1,919	160

24" MARVEL LOW PROFILE ADA HEIGHT BEVERAGE REFRIGERATOR WITH MAXSTORE BIN



- Dynamic cooling technology delivers precise temperature stability
- Frost free with temperature range between 34° and 42° F
- Thermal-efficient insulated cabinet with tinted, UV-resistant glass door
- Door lock is standard
- Stores up to 7 wine bottles
- 1 Full-width 3-in-1 Split Convertible Shelf encapsulated in commercial-quality black steel
- 1 half-width cantilevered glass shelf encapsulated in commercial-quality black steel
- 1 fixed glass shelf encapsulated in commercial-quality black steel
- MaxStore roller-glide clear bin
- 1.25" solid black stained maple shelf fronts
- 4" adjustable black flat toe grill
- White LED theatre-style dual-level lighting with Marvel Intuit temperature controls
- Close Door Assist hinge system
- Audible and visual alarms for door ajar and high/low temperature
- 1-year warranty, 5-year sealed system parts

Model	Finish	MAP	MSRP	Shipping wt. (lbs)
MA24BRG3RS	24" Marvel ADA Height Bev Refrig with MaxStore Bin, Stainless Frame, Glass Door with Lock, Right Hinge	\$2,109	\$2,339	160
MA24BRG3LS	24" Marvel ADA Height Bev Refrig with MaxStore Bin, Stainless Frame, Glass Door with Lock, Left Hinge	\$2,109	\$2,339	160

MARVEL LOW PROFILE BEV, REFRIG & ICE MACHINES (ADA HEIGHT)

14" MARVEL INDOOR COMPACT CRESCENT ICE MACHINE



- 2x more ice production than before
- Now produces up to 23 lbs of crescent ice per day and stores 12 lbs of crescent ice
- Minimizes water usage, only 3 gallons average daily rate
- Daily ice production rate nearly 4x greater than standard household ice maker
- No pump or drain required
- Crescent ice cube dimensions: 1/2" W x 3/4" H x 2 1/4" L
- Field reversible hinge for flexibility
- Removable ice bin for convenient access and easier cleaning
- 1-year parts and labor warranty, 5-year sealed system parts warranty

Model	Finish	MAP	MSRP	Shipping wt. (lbs)
MA14CRSCXS	14" Marvel Indoor Compact Crescent Ice Machine, Solid Stainless Steel Door, Reversible Hinge	\$1,239	\$1,409	90
MA14CRSCXB	14" Marvel Indoor Compact Crescent Ice Machine, Solid Smooth Black Door, Reversible Hinge	\$1,179	\$1,309	90

15" MARVEL LOW PROFILE ADA HEIGHT CRESCENT ICE MACHINE



- 2x more ice production than before
- Now produces up to 25 lbs of crescent ice per day and stores 12 lbs of crescent ice
- Minimizes water usage, only 3 gallons average daily rate
- Daily ice production rate nearly 4x greater than standard household ice maker
- Removable ice bin for convenient access and easier cleaning
- No pump or drain required
- Crescent ice cube dimensions: 1/2" W x 3/4" H x 2 1/4" L
- Field reversible hinge for added flexibility
- Four 1" leveling legs are independently adjustable for precise built-in installation
- 1-year parts and labor warranty, 5-year sealed system parts warranty

Model	Finish	MAP	MSRP	Shipping wt. (lbs)
MA15CRS1XS	15" Marvel Low Profile ADA Height Crescent Ice Machine, Solid Stainless Steel Door, Reversible Hinge	\$2,169	\$2,429	120

MARVEL LOW PROFILE BEV, REFRIG & ICE MACHINES (ADA HEIGHT)

15" MARVEL LOW PROFILE ADA HEIGHT CLEAR ICE MACHINE, GRAVITY DRAIN



- The quietest ice machine you can buy
- Produces up to 39 pounds of clear ice daily, the equivalent of nearly eight convenience-store ice bags
- Engineered to consistently produce pure, clear ice with unrivaled clarity that immediately cools your drink with slower melt
- Illuminice feature projects arctic white LED lighting through clear ice for a dazzling illumination effect
- Eco Ice mode moderates ice production to conservative usage, saving 25% water (91 gallons monthly) and 25% energy (\$45 annually)
- Dramatic midnight black interior
- Large-capacity, thermal bin stores 35 pounds of clear ice and preserves ice quality
- Gravity drain
- High-efficiency, low-maintenance condenser design for built-in zero clearance installations
- Low profile, ADA height allows for universal installation applications
- Designer handle, stainless steel exterior and white interior
- New energy-saving options conserve water and electricity
- Streamlined componentry and single-connection water fitting for simple installation
- Close Door Assist System prevents energy loss by automatically drawing door to a gentle close
- 1-year parts and labor warranty, 5-year sealed system parts warranty

Model	Finish	MAP	MSRP	Shipping wt. (lbs)
MA15CLS2RS	15" Marvel Low Profile ADA Height Clear Ice Machine, No Pump, Gravity Drain, Solid Stainless Steel Door, Right Hinge	\$2,159	\$2,409	120
MA15CLS2LS	15" Marvel Low Profile ADA Height Clear Ice Machine, No Pump, Gravity Drain, Solid Stainless Steel Door, Left Hinge	\$2,159	\$2,409	120
MA15CLP2RP	15" Marvel Low Profile ADA Height Clear Ice Machine, No Pump, Gravity Drain, Solid Panel Overlay Ready Door, Right Hinge	\$2,259	\$2,529	120
MA15CLP2LP	15" Marvel Low Profile ADA Height Clear Ice Machine, No Pump, Gravity Drain, Solid Panel Overlay Ready Door, Left Hinge	\$2,259	\$2,529	120

15" MARVEL LOW PROFILE ADA HEIGHT CLEAR ICE MACHINE WITH FACTORY INSTALLED DRAIN PUMP



- The quietest ice machine you can buy
- Produces up to 39 pounds of clear ice daily, the equivalent of nearly eight convenience-store ice bags
- Engineered to consistently produce pure, clear ice with unrivaled clarity that immediately cools your drink with slower melt
- Illuminice feature projects arctic white LED lighting through clear ice for a dazzling illumination effect
- Eco Ice mode moderates ice production to conservative usage, saving 25% water (91 gallons monthly) and 25% energy (\$45 annually)
- Dramatic midnight black interior
- Large-capacity, thermal bin stores 35 pounds of clear ice and preserves ice quality
- Factory installed drain pump
- High-efficiency, low-maintenance condenser design for built-in zero clearance installations
- Low profile, ADA height allows for universal installation applications
- Designer handle, stainless steel exterior and white interior
- New energy-saving options conserve water and electricity
- Streamlined componentry and single-connection water fitting for simple installation
- Close Door Assist System prevents energy loss by automatically drawing door to a gentle close
- 1-year parts and labor warranty, 5-year sealed system parts warranty

Model	Finish	MAP	MSRP	Shipping wt. (lbs)
MA15CPS2RS	15" Marvel ADA Height Clear Ice Machine with Pump, Solid Stainless Steel Door, Right Hinge	\$2,479	\$2,769	120
MA15CPS2LS	15" Marvel ADA Height Clear Ice Machine with Pump, Solid Stainless Steel Door, Left Hinge	\$2,479	\$2,769	120
MA15CPP2RP	15" Marvel ADA Height Clear Ice Machine with Pump, Solid Panel Overlay Ready, Right Hinge	\$2,589	\$2,889	120
MA15CPP2LP	15" Marvel ADA Height Clear Ice Machine with Pump, Solid Panel Overlay Ready, Left Hinge	\$2,589	\$2,889	120

MARVEL OUTDOOR REFRIGERATORS / FREEZER

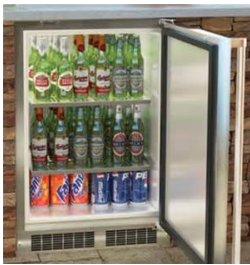
15" MARVEL OUTDOOR REFRIGERATOR



- Dynamic cooling technology delivers precise temperature stability
- Frost free with temperature range between 34° and 42° F
- Solid, corrosion-resistant stainless steel door and cabinet with thermal-efficient insulated construction
- 2.73 cu. ft. capacity stores 70 12-oz cans
- 2 FreshFlo stainless steel cantilever adjustable slide-out shelves
- Door lock standard
- 4" adjustable corrosion-resistant stainless steel flat toe grill
- White LED interior lighting
- Close Door Assist hinging system
- Audible alarms for door ajar and high/low temperature
- Filler kit available for 18" wide opening
- 1-year warranty, 5-year sealed system parts

Model	Finish	MAP	MSRP	Shipping wt. (lbs)
MO15RAS2RS	15" Marvel Outdoor Refrigerator, Solid Stainless Steel Door with Lock, Right Hinge	\$1,829	\$1,989	120
MO15RAS2LS	15" Marvel Outdoor Refrigerator, Solid Stainless Steel Door with Lock, Left Hinge	\$1,829	\$1,989	120

24" MARVEL OUTDOOR REFRIGERATOR



- Dynamic cooling technology delivers precise temperature stability
- Frost free with temperature range between 34° and 42° F
- Solid, corrosion-resistant stainless steel door and cabinet with thermal-efficient insulated construction
- 5.33 cu. ft. capacity stores 154 12-oz cans
- 2 FreshFlo stainless steel cantilever fully adjustable shelves
- Door lock standard
- 4" adjustable corrosion-resistant stainless steel flat toe grill
- White LED interior lighting
- Close Door Assist hinging system
- Audible alarms for door ajar and high/low temperature
- 1-year warranty, 5-year sealed system parts

Model	Finish	MAP	MSRP	Shipping wt. (lbs)
MO24RAS1RS	24" Marvel Outdoor Refrigerator, Solid Stainless Steel Door with Lock, Right Hinge	\$2,059	\$2,279	160
MO24RAS1LS	24" Marvel Outdoor Refrigerator, Solid Stainless Steel Door with Lock, Left Hinge	\$2,059	\$2,279	160

24" MARVEL OUTDOOR REFRIGERATOR WITH MAXSTORE BIN



- Dynamic cooling technology delivers precise temperature stability
- Frost free with temperature range between 34° and 42° F
- Tall bottle door storage, solid, corrosion-resistant stainless steel door and cabinet with thermal-efficient insulated construction
- 5.14 cu. ft. capacity stores 142 - 12-oz cans
- 1 full width stainless steel cantilever slide out shelf, 1 half-width cantilevered adjustable shelf
- MaxStore full width utility bin with glass cover
- Door lock standard
- 4" adjustable corrosion-resistant stainless steel flat toe grill
- White LED lighting
- Close Door Assist hinging system
- Audible alarms for door ajar and high/low temperature
- 1-year warranty, 5-year sealed system parts

Model	Finish	MAP	MSRP	Shipping wt. (lbs)
MO24RAS2RS	24" Marvel Outdoor Refrigerator with MaxStore Bin, Solid Stainless Steel Door with Lock, Right Hinge	\$2,599	\$2,889	160
MO24RAS2LS	24" Marvel Outdoor Refrigerator with MaxStore Bin, Solid Stainless Steel Door with Lock, Left Hinge	\$2,599	\$2,889	160

MARVEL OUTDOOR REFRIGERATORS / FREEZER

24" MARVEL OUTDOOR REFRIGERATED DRAWERS



- Dynamic cooling technology delivers precise temperature stability
- Frost free with temperature range between 34° and 42° F
- Solid, corrosion-resistant stainless steel drawer fronts and cabinet
- Thermal-efficient insulated construction
- 5.01 cu. ft. capacity stores 108 12-oz cans
- 2 stainless steel drawers
- Drawer lock standard
- 4" adjustable corrosion-resistant stainless steel flat toe grill
- White LED interior display lighting
- Close Drawer Assist system
- Audible alarms for door ajar and high/low temperature
- 1-year warranty, 5-year sealed system parts

Model	Finish	MAP	MSRP	Shipping wt. (lbs)
MO24RDS3NS	24" Marvel Outdoor Refrigerated Drawers, Solid Stainless Steel, With lock	\$3,459	\$3,839	160

24" MARVEL OUTDOOR REFRIGERATOR FREEZER



- Certified for performance to endure the elements, like rain, corrosion, high humidity and heat (tested to withstand temperatures as high as 115°F)
- Corrosion-resistant stainless steel exterior, commercial-grad power cord and sturdy pro-style handle and rugged toe kicks
- Dynamic cooling technology delivers precise temperature stability
- Marvel Intuit Integrated Controls ensure precise refrigeration temperature management from 34°F to 42°F and freezer a temperature between -6° F to 6° F to keep contents evenly frozen throughout
- MaxStore roller-glide clear utility bin provides maximum volume to effectively store large, bulky or loose items
- Cantilevered, adjustable shelving system
- Pristine arctic white interior easily wipes clean and efficient white LED interior lighting illuminates interior for better viewing
- Top-mounted vertical freezer with self-closing door large enough to hold up to 12 pints of ice cream
- Field installable ice maker kit available (Accessory part #S42418151)
- Close Door Assist System gently and automatically brings door to a close
- Panel overlay option features soft-close integrated hinge for a truly flush fit with cabinetry
- Audible and visual alarms signal when door is left ajar to protect food integrity and energy use
- Vacation/Sabbath mode conserves energy during times when the unit is not in use and complies with Star-K requirements
- Height adjustment up to 1" with leveling legs
- 4" black adjustable toe kick
- 1-year warranty, 5-year sealed system parts

Model	Finish	MAP	MSRP	Shipping wt. (lbs)
MO24RFS2RS	24" Marvel Outdoor Refrigerator Freezer, Stainless Steel Door, Right Hinge	\$2,479	\$2,759	160
MO24RFS2LS	24" Marvel Outdoor Refrigerator Freezer, Stainless Steel Door, Left Hinge	\$2,479	\$2,759	160

MARVEL OUTDOOR REFRIGERATORS FREEZER

24" MARVEL OUTDOOR ALL FREEZER



- CSA Certified for outdoor use to withstand elements like rain, high humidity and temperatures as high as 115° F
- Exterior constructed of corrosion-resistant stainless steel
- Tested to hold up to 200 lbs of frozen goods
- Dynamic Cooling Technology delivers rapid cool down, frost-free operation and the industry's best temperature stability
- Adjustable FreshFlo stainless-steel shelf helps efficiently circulate cold air and ensures even temperature stability
- Keep items organized and within easy reach with two commercial-grade chrome wire freezer bins on the fully extendable Smooth Glide System™
- 4.7 total cubic feet
- Marvel Prime controls for precise, frost-free temperature management between -10° and 10° F
- Close Door Assist System gently and automatically draws door to a close, ensuring door is never accidentally left ajar
- 1-year parts and labor warranty, 5-year sealed system parts warranty

Model	Finish	MAP	MSRP	Shipping wt. (lbs)
MO24FAS1LS	24" Marvel Outdoor All Freezer, Stainless Steel Door, Left Hinge	\$3,029	\$3,329	160
MO24FAS1RS	24" Marvel Outdoor All Freezer, Stainless Steel Door, Right Hinge	\$3,029	\$3,329	160

MARVEL OUTDOOR ICE MACHINES

15" MARVEL OUTDOOR UNDERCOUNTER CRESCENT ICE MACHINE



- Now produces up to 25 lbs of crescent ice per day and stores 25 lbs of crescent ice
- Daily ice production rate nearly 4x greater than standard household ice maker
- Designed to operate in temperatures from 50° to 100° F
- Thermal-efficient insulated cabinet ensures optimum energy efficiency and cooling performance
- Removable ice bin for convenient access and easier cleaning
- No drain required
- Corrosion-resistant stainless steel exterior, sturdy pro-style handle and rugged stainless steel toe kick
- Four 1" leveling legs are independently adjustable for precise built-in installation
- 1-year warranty, 5-year sealed system parts

Model	Finish	MAP	MSRP	Shipping wt. (lbs)
MO15CRS1XS	15" Marvel Outdoor Undercounter Crescent Ice Machine, Solid Stainless Steel Door, Reversible Hinge	\$2,249	\$2,499	86

15" MARVEL OUTDOOR CLEAR ICE MACHINE, GRAVITY DRAIN



- CSA Certified for outdoor use to withstand elements like rain, corrosion, high humidity and heat
- Produces up to 34 lbs. of clear, pure ice in 24 hours and stores up 35 lbs of clear ice
- Stainless steel ice cutter for consistent cube size and shape
- New Illuminice feature projects arctic white LED light through clear ice for a dazzling illumination effect
- Marvel Intuit integrated controls feature all-new settings for ultimate programmability
- Gravity drain
- Eco Ice mode moderates ice production to conservative usage, saving 25% water (91 gallons monthly) and 25% energy (\$45 annually)
- Close Door Assist System gently and automatically draws door to a close, ensuring door is never accidentally left ajar
- Corrosion-resistant stainless steel exterior, sturdy pro-style handle and rugged stainless steel toe kick adjustable to 4"
- 1-year warranty, 5-year sealed system parts

Model	Finish	MAP	MSRP	Shipping wt. (lbs)
MO15CLS2RS	15" Marvel Outdoor Clear Ice Machine, Gravity Drain, Solid Stainless Steel Door, Right Hinge	\$2,829	\$3,149	100
MO15CLS2LS	15" Marvel Outdoor Clear Ice Machine, Gravity Drain, Solid Stainless Steel Door, Left Hinge	\$2,829	\$3,149	100

15" MARVEL OUTDOOR CLEAR ICE MACHINE, FACTORY INSTALLED DRAIN PUMP



- CSA Certified for outdoor use to withstand elements like rain, corrosion, high humidity and heat
- Produces up to 34 lbs. of clear, pure ice in 24 hours & stores up 35 lbs of clear ice
- Stainless steel ice cutter for consistent cube size and shape
- New Illuminice feature projects arctic white LED light through clear ice for a dazzling illumination effect
- Marvel Intuit integrated controls feature all-new settings for ultimate programmability
- Factory installed drain pump
- Eco Ice mode moderates ice production to conservative usage, saving 25% water (91 gallons monthly) and 25% energy (\$45 annually)
- Close Door Assist System gently and automatically draws door to a close, ensuring door is never accidentally left ajar
- Corrosion-resistant stainless steel exterior, sturdy pro-style handle and rugged stainless steel toe kick adjustable to 4"
- 1-year warranty, 5-year sealed system parts

Model	Finish	MAP	MSRP	Shipping wt. (lbs)
MO15CPS2RS	15" Marvel Outdoor Clear Ice Machine with Pump, Solid Stainless Steel Door, Right Hinge	\$3,149	\$3,499	100
MO15CPS2LS	15" Marvel Outdoor Clear Ice Machine with Pump, Solid Stainless Steel Door, Left Hinge	\$3,149	\$3,499	100

MARVEL INDOOR OUTDOOR DISPENSER CABINETS FOR BEER OR WINE

24" MARVEL INDOOR DISPENSER CABINETS FOR BEER OR WINE



Tap not included

- Dynamic Cooling Technology delivers the industry's most even temperature stability
- Expanded temperature control to store kegs between 34°F to 60°F
- Thermal-efficient insulated cabinet
- Two removable stow-on-board metal shelves
- Exclusive shelf design converts to a full refrigerator when you aren't storing kegs or frosted mugs
- Easy Installation! No panel kit required
- Stores 1 half barrel, 1 quarter barrel or 2 sixth barrels, or 1 sixth barrel and 1 slim quarter
- Choose the cabinet, select a tap kit. NOTE: Tap kit required accessory (See Accessories on page 34 for tap kit options)
- Stainless steel tower can be mounted on any countertop with flush drain kit
- Black adjustable flat toe grill
- Close Door Assist hinge system (panel overlay option has soft-close integrated hinge)
- Audible alarms for door ajar and high/low temperature
- 1-year warranty, 5-year sealed system parts

Model	Finish	MAP	MSRP	Shipping wt. (lbs)
ML24BNS2RB	24" Marvel Built-in Dispenser Cabinet, Black Door, Right Hinge	\$1,579	\$1,739	160
ML24BNS2LB	24" Marvel Built-in Dispenser Cabinet, Black Door, Left Hinge	\$1,579	\$1,739	160
ML24BNS2RS	24" Built-in Dispenser Cabinet, Stainless Steel Door, Right Hinge	\$1,899	\$1,989	160
ML24BNS2LS	24" Built-in Dispenser Cabinet, Stainless Steel Door, Left Hinge	\$1,899	\$1,989	160
ML24BNP3RP	24" Marvel Built-in Dispenser Cabinet, Panel Ready, Overlay Door, Right Hinge	\$2,109	\$2,199	160
ML24BNP3LP	24" Marvel Built-in Dispenser Cabinet, Panel Ready, Overlay Door, Left Hinge	\$2,109	\$2,199	160

24" MARVEL OUTDOOR DISPENSER CABINETS FOR BEER OR WINE



Tap not included

- Dynamic Cooling Technology delivers the industry's most even temperature stability
- New Marvel dispenser cabinet design now offers expanded temperature control to store kegs between 34°F to 60°F
- Twin tap option with two 1/6 barrel kegs
- Thermal-efficient insulated cabinet
- Two removable stow-on-board metal shelves
- Exclusive shelf design converts to a full refrigerator when you aren't storing kegs or frosted mugs
- Stores 1 half barrel, 1 quarter barrel or 2 sixth barrels, or 1 sixth barrel and 1 slim quarter
- Choose the cabinet, select a tap kit. NOTE: Tap kit required accessory (See Accessories on page 34 for tap kit options)
- Stainless steel tower can be mounted on any countertop with flush drain kit (See Accessories page 34 for tap kit options)
- Mobile Dispenser Cabinet (see MO24BNSM below) available with mug rail and durable casters to move the party wherever you go
- Close Door Assist hinge system
- Audible alarms for door ajar and high/low temperature
- 1-year warranty, 5-year sealed system parts

Model	Finish	MAP	MSRP	Shipping wt. (lbs)
MO24BNS2RS	24" Marvel Built-in Outdoor Dispenser Cabinet, Stainless Steel Door, Right Hinge	\$2,059	\$2,329	160
MO24BNS2LS	24" Marvel Built-in Outdoor Dispenser Cabinet, Stainless Steel Door, Left Hinge	\$2,059	\$2,329	160
MO24BNSMRS	24" Marvel Mobile Outdoor Dispenser Cabinet, Stainless Steel Door, Right Hinge	\$2,389	\$2,699	160
MO24BNSMLS	24" Marvel Mobile Outdoor Dispenser Cabinet, Stainless Steel Door, Left Hinge	\$2,389	\$2,699	160

MARVEL ACCESSORIES

INSTALLATION ACCESSORIES

Model	Finish	MSRP	Shipping wt. (lbs)
S42418151	Ice Maker Kit for MO24RF & ML24RF, Bucket Included	\$337	6
42242833	18" Stainless Steel Filler Kit	\$49	4
42242832	18" Black Filler Kit	\$49	4
42249443	Stacking Kit	\$79	6
42244041	Caster Kit for MO24BNSMRS & MO24BNSMLS (Set of four)	\$119	6

SHELVING ACCESSORIES

42248729	Full-width Flat Shelf, Natural Maple Shelf Front (24" Model)	\$19	1
42248725	Half-width Flat Shelf, Natural Maple Shelf Front (24" Model)	\$15	1

WINE CELLAR ACCESSORIES

42242728	Humidrawer™ Cigar Compartment, fits 61WCM only **when out no longer available**	\$1,666	25
----------	--	---------	----

ICE MACHINE ACCESSORIES

S41013789	Ice Machine Cleaner, 4 oz bottle (Bundle of 4)	\$48	2
42249508	** Marvel Drain Pump Conversion Kit	-	-
42249509	** Marvel Replacement Pump Only	-	-

BEER DISPENSER ACCESSORIES

S41014172	External CO2 Metal Mounting Bracket Kit and 4 Mounting Screws	\$39	5
42242373	Tap Cleaning Kit: Includes cleaning solution, pump, mixing bottle, brush and wrench.	\$99	3
S42418192	Beer Drain Sump, order with beer cabinets only for built-in installations	\$39	5
S42418645*	Beer Single Tap Kit with CO2 Tank	\$659	16
S42418646*	Beer Double Tap Kit with CO2 Tank	\$919	20
S42418647*	Wine Single Tap Kit / Nitro Tank	\$869	16
S42418648*	Wine Double Tap Kit / Nitro Tank	\$1,309	20

*Kit includes: Tower/Tap, Regulator, Low Boy Coupler, Gas Hose, Clamps, Faucet Wrench, Tower Gasket, Tower Mounting Screws & Gas Tank

**** Must be ordered through Marvel Service Parts (616) 754-5601**

DISCONTINUED MODELS - AVAILABLE WHILE SUPPLIES LAST

15" & 24" PROFESSIONAL WINE REFRIGERATORS

All models limited to supply on hand - When out see new model number referenced

Model	Finish	MAP	MSRP	Shipping wt. (lbs)
MP15WSG4RS	15" Marvel Professional Single Zone Wine Refrigerator, Stainless Frame, Glass Door With Lock, Integrated Right Hinge (new MPWC415SG31A)	\$2,259	\$2,529	118
MP15WSG4LS	15" Marvel Professional Single Zone Wine Refrigerator, Stainless Frame, Glass Door With Lock, Integrated Left Hinge (new MPWC415SG31A)	\$2,259	\$2,529	118
MP15WSF4RP	15" Marvel Professional Single Zone Wine Refrigerator, Panel Overlay Frame Ready, Glass Door, Integrated Right Hinge (new MPWC415IG31A)	\$2,259	\$2,529	118
MP24WSG0RS	24" Marvel Professional Single Zone Wine Refrigerator, w/Hinge Pin Stainless Frame, Glass Door With Lock, Integrated Right Hinge (no substitution)	\$2,299	\$2,499	148
MP24WSG0LS	24" Marvel Professional Single Zone Wine Refrigerator, w/Hinge Pin Stainless Frame, Glass Door With Lock, Integrated Left Hinge (no substitution)	\$2,299	\$2,499	148
MP24WSG5RS	24" Marvel Professional Single Zone Wine Refrigerator, Stainless Frame, Glass Door With Lock, Integrated Right Hinge (new MPWC424SG31A)	\$2,479	\$2,759	148
MP24WSG5LS	24" Marvel Professional Single Zone Wine Refrigerator, Stainless Frame, Glass Door With Lock, Integrated Left Hinge (new MPWC424SG31A)	\$2,479	\$2,759	148
MP24WSF5LP	24" Marvel Professional Single Zone Wine Refrigerator, Panel Overlay Frame Ready Glass Door, Integrated Left Hinge (new MPWC424IG31A)	\$2,479	\$2,759	148

DISCONTINUED MODELS - AVAILABLE WHILE SUPPLIES LAST

15" & 24" PROFESSIONAL BEVERAGE CENTERS

All models limited to supply on hand - When out see new model number referenced

Model	Finish	MAP	MSRP	Shipping wt. (lbs)
MP15BCG4RS	15" Marvel Professional Beverage Center, Stainless Frame, Glass Door With Lock, Integrated Right Hinge (new MPBV415SG31A)	\$2,159	\$2,409	118
MP15BCG4LS	15" Marvel Professional Beverage Center, Stainless Frame, Glass Door With Lock, Integrated Right Hinge (new MPBV415SG31A)	\$2,159	\$2,409	118
MP15BCF4RP	15" Marvel Professional Beverage Center, Panel Overlay Frame Ready Glass Door, Integrated Right Hinge (new MPBV415IG31A)	\$2,159	\$2,409	118
MP15BCF4LP	15" Marvel Professional Beverage Center, Panel Overlay Frame Ready Glass Door, Integrated Left Hinge (new MPBV415IG31A)	\$2,159	\$2,409	118
MP24BCG0RS	24" Marvel Professional Beverage Refrig with Hinge Pin, Stainless Frame, Glass Door With Lock, Right Hinge (no substitution)	\$2,299	\$2,499	154
MP24BCG0LS	24" Marvel Professional Beverage Refrig with Hinge Pin, Stainless Frame, Glass Door With Lock, Left Hinge (no substitution)	\$2,299	\$2,499	154
MP24BCG4RS	Stainless Frame, Glass Door With Lock, Integrated Right Hinge (new MPBV424SG31A)	\$2,479	\$2,759	154
MP24BCG4LS	Stainless Frame, Glass Door With Lock, Integrated Left Hinge (new MPBV424SG31A)	\$2,479	\$2,759	154
MP24BCF4RP	Overlay Frame Glass Door With Lock, Integrated Right Hinge (new MPBV424IG31A)	\$2,479	\$2,759	154
MP24BCF4LP	Overlay Frame Glass Door With Lock, Integrated Left Hinge (new MPBV424IG31A)	\$2,479	\$2,759	154
MP24RAS4RS	24" Marvel Professional All Refrigerator With MaxStore Bin, Solid Stainless Steel Door With Lock, Integrated Right Hinge (no substitution)	\$2,259	\$2,529	141
MP24RAS4LS	24" Marvel Professional All Refrigerator With MaxStore Bin, Solid Stainless Steel Door With Lock, Integrated Left Hinge (no substitution)	\$2,259	\$2,529	141
MP24RAP4RP	24" Marvel Professional All Refrigerator With MaxStore Bin, Solid Panel Ready Door With Lock, Integrated Right Hinge (no substitution)	\$2,259	\$2,529	141
MP24RAP4LP	24" Marvel Professional All Refrigerator With MaxStore Bin, Solid Panel Ready Door With Lock, Integrated Left Hinge (no substitution)	\$2,259	\$2,529	141
MP24BRG4RS	24" Marvel Professional Beverage Refrigerator With MaxStore Bin, Stainless Frame, Glass Door With Lock, Integrated Right Hinge (new MPRE424SG31A)	\$2,599	\$2,889	154
MP24BRG4LS	24" Marvel Professional Beverage Refrigerator With MaxStore Bin, Stainless Frame, Glass Door With Lock, Integrated Left Hinge (new MPRE424SG31A)	\$2,599	\$2,889	154
MP24BRF4RP	24" Marvel Professional Beverage Refrigerator With MaxStore Bin, Panel Overlay Frame Ready Glass Door, Integrated Right Hinge (new MPRE424IG31A)	\$2,599	\$2,889	154
MP24BRF4LP	24" Marvel Professional Beverage Refrigerator With MaxStore Bin, Panel Overlay Frame Ready Glass Door, Integrated Left Hinge (new MPRE424IG31A)	\$2,599	\$2,889	154

DISCONTINUED MODELS - AVAILABLE WHILE SUPPLIES LAST

24" PROFESSIONAL REFRIGERATED DRAWERS

All models limited to supply on hand - When out see new model number referenced

Model	Finish	MAP	MSRP	Shipping wt. (lbs)
MP24RDS3NS	24" Marvel Professional Refrigerated Drawers, Solid Stainless Drawer Fronts, With Lock (new MPDR424SS71A)	\$3,359	\$3,729	141
MP24RDP3NP	24" Marvel Professional Refrigerated Drawers, Solid Panel Overlay Ready Drawer Fronts, With Lock (new MPDR424IS71A)	\$3,359	\$3,729	141

24" PROFESSIONAL ALL FREEZER

Model	Finish	MAP	MSRP	Shipping wt. (lbs)
MP24FAS4RS	24" Marvel Professional Freezer, Stainless Steel Door, Integrated Right Hinge (new MPFZ424SS31A)	\$2,979	\$3,309	160
MP24FAS4LS	24" Marvel Professional Freezer, Stainless Steel Door, Integrated Left Hinge (new MPFZ424SS31A)	\$2,979	\$3,309	160
MP24FAP4RP	24" Marvel Professional Freezer, Solid Panel Overlay Door, Integrated Right Hinge (new MPFZ424IS31A)	\$2,979	\$3,309	160
MP24FAP4LP	24" Marvel Professional Freezer, Solid Panel Overlay Door, Integrated Left Hinge (new MPFZ424IS31A)	\$2,979	\$3,309	160

DISCONTINUED MODELS - AVAILABLE WHILE SUPPLIES LAST

42" & 48" PROFESSIONAL SIDE BY SIDE REFRIGERATOR FREEZER

All models limited to supply on hand - When out see new model number referenced

Model	Finish	MAP	MSRP	Shipping wt. (lbs)
MP42SS2NP	42" Marvel Professional Side by Side Refrigerator Freezer (no substitution)	\$9,589	\$10,259	525
MP48SS2NS	48" Marvel Professional Side by Side Refrigerator Freezer (no substitution)	\$10,529	\$11,279	545

30" & 36" PROFESSIONAL ALL REFRIGERATOR COLUMN

Model	Finish	MAP	MSRP	Shipping wt. (lbs)
MP30RA2RS	30" Marvel Professional All Refrigerator Column (no substitution)	\$7,449	\$7,979	475
MP36RA2RS	36" Marvel Professional All Refrigerator Column (no substitution)	\$7,449	\$7,979	485

30" & 36" PROFESSIONAL ALL FREEZER COLUMN

Model	Finish	MAP	MSRP	Shipping wt. (lbs)
MP30FA2LS	30" Marvel Professional All Freezer Column (no substitution)	\$7,549	\$8,079	475
MP30FA2RP	36" Marvel Professional All Refrigerator Column (no substitution)	\$7,249	\$7,759	475

GENERAL ACCESSORIES

NOTE: If customer is looking for a Built in Refrigerator Grille Kit, Center Trim Kit or Flush Mount Kit, refer to Viking items - DDGK603SS/663SS/723SS, FCTKSS or PBIRTKSS.

Model	Finish	MSRP	Shipping wt. (lbs)
42249470	Professional Stainless Steel Handle Kit - 5 REF	\$77	7

DISCONTINUED MODELS - AVAILABLE WHILE SUPPLIES LAST

15" MARVEL ICE MACHINES

All models limited to supply on hand - When out see new model number referenced

Model	Finish	MAP	MSRP	Shipping wt. (lbs)
ML15CLS1RS	15" Marvel Indoor Clear Ice Machine, Gravity Drain, Solid Stainless Door, Right Hinge (new ML15CLS2RS)	\$2,259	\$2,519	127
ML15CPS1RB	15" Marvel Indoor Clear Ice Machine, with Pump, Solid Black Door, Right Hinge (new ML15CPS2RB)	\$2,569	\$2,809	127
MP15CPS2RS	15" Marvel Professional Indoor Clear Ice Machine, Factory Installed Drain Pump, Solid Stainless Door, Right Hinge (new MP15CPS3RS)	\$2,779	\$3,089	127
ML15CLG1LS	15" Marvel Indoor Glass Door Clear Ice Machine, Gravity Drain, Solid Stainless Door, Left Hinge (new ML15CLG2RS)	\$2,569	\$2,879	127
ML15CPG1RS	15" Marvel Indoor Glass Door Clear Ice Machine, with Pump, Solid Stainless Door, Right Hinge (new ML15CPG2RS)	\$2,879	\$3,189	127
MP15CPG2RS	15" Marvel Professional Built-In Glass Door Clear Ice Machine, Factory Installed Drain Pump, Stainless Frame Glass Door, Integrated Right Hinge (new MP15CPG3RS)	\$3,189	\$3,499	130
MA15CRSCLS	15" Marvel Indoor Compact Crescent Ice Machine, Stainless Door, Left Hinge (new MA14CRSCXS)	\$1,179	\$1,339	90
MA15CRSCLB	15" Marvel Indoor Compact Crescent Ice Machine, Black Door, Stainless Handle, Left Hinge (new MA14CRSCXB)	\$1,179	\$1,339	90
MA15CLS1LS	15" Marvel ADA Height Clear Ice Machine, No Pump, Gravity Drain Solid Stainless Steel Door, Left Hinge (new MA15CLS2LS)	\$2,059	\$2,299	120
MA15CPP1LP	15" Marvel ADA Height Clear Ice Machine, with Pump, Solid Panel Overlay Ready, Left Hinge (new MA15CPP2RP)	\$2,469	\$2,749	120
25OIM-SS-F-R	15" Marvel Outdoor Undercounter Crescent Ice Machine, Solid Stainless Steel Door, Right Hinge (new MO15CRS1XS)	\$1,799	\$1,999	86
3OIMT-SS-F-R	15" Marvel Outdoor Clear Ice Machine, No Pump, Gravity Drain, Solid Stainless Steel Door, Right Hinge (new MO15CLS2RS)	\$2,569	\$2,859	100
3OIMT-SS-F-L	15" Marvel Outdoor Clear Ice Machine, No Pump, Gravity Drain, Solid Stainless Steel Door, Left Hinge (new MO15CLS2RS)	\$2,569	\$2,859	100
3OIMT-SS-F-L-P	15" Marvel Outdoor Clear Ice Machine, with Pump Solid Stainless Steel Door, Left Hinge (new MO15CPS2RS)	\$2,879	\$3,199	100

DISCONTINUED MODELS - AVAILABLE WHILE SUPPLIES LAST

24" MARVEL BEER DISPENSERS

Model	Finish	MAP	MSRP	Shipping wt. (lbs)
MO24BSS2LS	24" Marvel Outdoor Single Tap Built-In Draft Beer Dispenser, Solid Stainless Steel Door With Lock, Left Hinge	\$2,539	\$2,869	160
MO24BSSMRS	24" Marvel Outdoor Single Tap Mobile Draft Beer Dispenser, Solid Stainless Steel Door With Lock, Right Hinge	\$2,869	\$3,239	191
MO24BTSMRS	24" Marvel Outdoor Twin Tap Mobile Draft Beer Dispenser, Solid Stainless Steel Door With Lock, Right Hinge	\$3,619	\$4,049	191
ML24BSS2RB	24" Marvel Indoor Single Tap Built-In Beer Dispenser, Solid Black Door, Right Hinge	\$2,059	\$2,269	160
ML24BSS2LB	24" Marvel Indoor Single Tap Built-In Beer Dispenser, Solid Black Door, Left Hinge	\$2,059	\$2,269	160
ML24BSS2RS	24" Marvel Indoor Single Tap Built-In Beer Dispenser, Solid Stainless Steel Door, Right Hinge	\$2,379	\$2,489	160
ML24BTP3LP	24" Marvel Indoor Twin Tap Built-In Beer Dispenser, Solid Panel Overlay Ready Door, Left Hinge	\$2,819	\$3,129	160