

HOME
REFINEMENTS

JULIEN

OUTDOOR KITCHENS | LINE COLLECTION

PRICE LIST

USA | EFFECTIVE MAY 1ST, 2020



It's in our nature	2
Simply elegant	4
Anatomy of a cabinet	8
Warranty	59
Resources	60
Shipping costs	61

LINE COLLECTION

LINE collection	9
-----------------	---

SINK CABINETS

Sink cabinets	11
Sink cabinet smartstation	12
Sink cabinet socialcorner	14
Sink bar station	16
Sink base cabinet	18

GRILL CABINETS

Grill cabinets	19
Ceramic grill base	20
Grill base cabinet	22

STORAGE CABINETS and SPECIALITIES

Storage & specialty cabinets	25
Storage cabinet	26
Drawer storage cabinet	27
Chef cabinet	28
Storage open	29
Tank cabinet	30
Recycling cabinet	31
Cart cabinet	32
Corner storage cabinet	33

AMBIENCE

Ambience	35
LED lighting module	36

APPLIANCE CABINETS

Appliance cabinets	37
Appliances cabinet	38

FILLERS, SURFACE AND LEGS

Fillers, countertops and legs	41
End filler	42
Linearfiller	43
Corner90 filler	44
Countertops	45
Lunch countertop leg	46

À LA CARTE

À la Carte	47
À la Carte options	48
316L S/S construction	49
Back panel	49
LED lighting bottom	50
Door/drawer lock	50

ACCESSORIES

Accessories	51
Knives block	52
Multifunction tray long	52
Wrapping paper dispenser	53
Bottle holder	53
Leather drawer mat	54
Boards/tray holder	54
Storage racking for plastic bins	55
Storage racking for stainless steel pans	55
Sliding shelves	56

INDEX

Index	57
-------	----

IT'S IN OUR *NATURE*

At Julien, we have spent more than 73 years hard at work in the kitchen. And that experience has taught us so much about perfecting the room that is the true heart of the home.

Stainless steel is our passion, and making it gorgeous our mission. Today we enjoy an enviable reputation throughout North America, as Julien professional kitchens have become indispensable for many world-renowned chefs.

In 2003, Home Refinements by Julien was born from the desire to bring our expertise gained in the design and creation of professional kitchens to the residential scene. The result is a brand that features professional-grade form and function.

Now our next act is to build on our love of kitchens, and take it outside, into the great outdoors. Because nothing whets the appetite like fresh air.











LINE

Galley layout starting at \$ 37 400

SIMPLY *ELEGANT*

The reflection of who you are. An outdoor kitchen designed to take advantage of the mountain views. The open space and fluid workflow welcome your guests who, once seated at the bar, turns into your audience. Your time to shine!

The straightness of the parallel configuration of the kitchen which includes a large island goes hand in hand with the linearity of the handles of the LINE collection. A thoughtful, ergonomic and refined design where every detail reveals the combination of simple formal language and well thought out functionality.

References

Bar Station 2 Doors	p. 26
Grill Base Cabinet 2 doors	p. 34
Storage Cabinet 2 doors	p. 38
Drawer Storage Cabinet	p. 39
Chef Cabinet	p. 40
LED Lighting Module	p. 48



ANATOMY OF A *CABINET*

Everything is well-thought-out regarding the design of Home Refinements outdoor kitchen cabinets. The cabinets are high quality and very durable. The cabinets' designs also offer unprecedented versatility and modularity to customize outdoor

kitchens in a wide variety of configurations and for any type of environment. With these stainless steel cabinets, customers can build their dream kitchen that is completely adapted to their needs!

- 1 Modules easy to attach with simple clip system
- 2 Weather resistant cabinet with efficient rubber gasket system on doors
- 3 Fine integrated stainless steel handle
- 4 Soft-close hardware for soft and quiet closing of cabinets
- 5 Clip-on toe-kick included
- 6 Content of storage cabinets protected thanks to the double-back construction and closed top
- 7 Soundproofing / insulation of front doors panels reducing sound at closing
- 8 Adjustable stainless steel feet, 2 of which allow anchoring on the ground





LINE

COLLECTION

- Modular stand-alone cabinetry
- Elegant and uniform front panel
- Refined integrated handle design

SINK CABINETS

Just add water. These practical sink cabinets are an easy, attractive way to add a water source to your outdoor kitchen. Choose from elegant fully integrated sink cabinets or versatile sink base cabinets. From the very beginning, our mission has been to make every outdoor kitchen just as beautiful and functional as their indoor counterparts. And rest assured, that is exactly what we will do for yours.

Cheers.

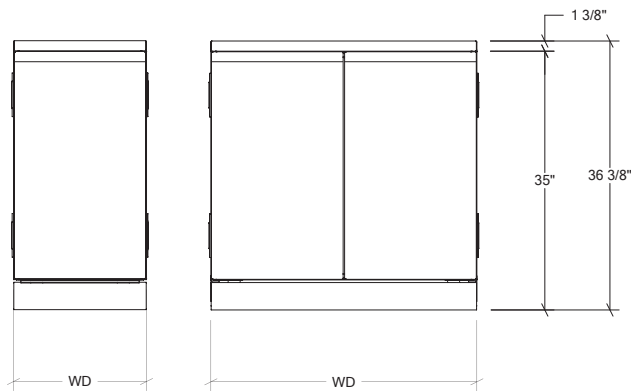
SINK CABINET SMARTSTATION

LINE COLLECTION

These modular cabinets are true workstations with their integrated sink. The multi-level sink from the Smartstation collection is accompanied by accessories of different materials. These elegant commercial grade stainless steel cabinets protect your equipment from external aggressions.

- The linear integrated handle design highlights the beauty and simplicity of the collection
- Work surface with built-in Smartstation sink allowing the use of accessories on two levels
- Weather resistant cabinet due to efficient rubber gasket system on doors
- Soft-close hardware for soft and quiet closing of cabinets
- Included: Cutting board, colander, drying rack, grid, sink cover, clip-on toe-kick, freestanding storage shelf
- Adjustable stainless steel feet, 2 of which allow anchoring on the ground

SKU	CABINET WIDTH "WD"	DOOR QTY	OPENING	ACCESSORIES ESSENCE	MSRP
HROK-SSSM-800201	18"	1	Left hinges	Walnut	\$ 4 900
HROK-SSSM-800202	18"	1	Right hinges	Walnut	\$ 4 900
HROK-SSSM-800203	18"	1	Left hinges	Maple	\$ 4 900
HROK-SSSM-800204	18"	1	Right hinges	Maple	\$ 4 900
HROK-SSSM-800263	30"	2		Walnut	\$ 5 600
HROK-SSSM-800264	30"	2		Maple	\$ 5 600
HROK-SSSM-800209	36"	2		Walnut	\$ 5 900
HROK-SSSM-800210	36"	2		Maple	\$ 5 900



À LA CARTE



316 L/S Construction



Back Panel
\$ 180



LED Lighting Bottom
\$ 280



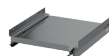
Door/Drawer Lock
\$ 90

For more details about the À la Carte, please refer to page 59 of the document.

USEFUL ACCESSORIES



Boards/Cooking Sheets Holder
\$ 60



Sliding Shelf
\$ 210

For more details about the accessories, please refer to page 65 of the document.

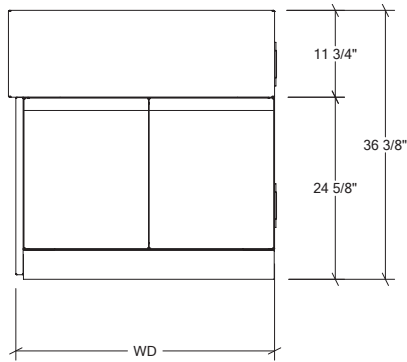
SINK CABINET SOCIALCORNER

LINE COLLECTION

The unique design of the Home Refinements Social Corner sink is brought outside. The improved workflow from the sinks two-sided accessibility is perfect for your busy outdoor parties. These two-doors cabinets are real workstations with built-in sinks and front and side apron. They must therefore be used at the end of configuration. These elegant commercial grade stainless steel cabinets protect your equipment from external aggressions.

- The linear integrated handle design highlights the beauty and simplicity of the collection
- Work surface with built-in Social Corner sink from Home Refinements integrated into a stand-alone module
- The unique island corner installation allows two people to work at the sink at the same time
- Designed for left or right corner installation with left or right apron
- Weather resistant cabinet due to efficient rubber gasket system on doors
- Soft-close hardware for soft and quiet closing of cabinets
- Included with sink: sink cover, clip-on toe-kick, freestanding storage shelf
- Adjustable stainless steel feet, 2 of which allow anchoring on the ground

SKU	CABINET WIDTH "WD"	DOOR QTY	APRON SIDE	MSRP
HROK-SSSC-800265	30"	2	Left	\$ 5 400
HROK-SSSC-800266	30"	2	Right	\$ 5 400
HROK-SSSC-800211	36"	2	Left	\$ 5 600
HROK-SSSC-800212	36"	2	Right	\$ 5 600



À LA CARTE



316 L/S Construction



Back Panel
\$ 180



LED Lighting Bottom
\$ 280



Door/Drawer Lock
\$ 90

For more details about the À la Carte, please refer to page 59 of the document.

USEFUL ACCESSORIES



Boards/Cooking Sheets Holder
\$ 60

For more details about the accessories, please refer to page 65 of the document.

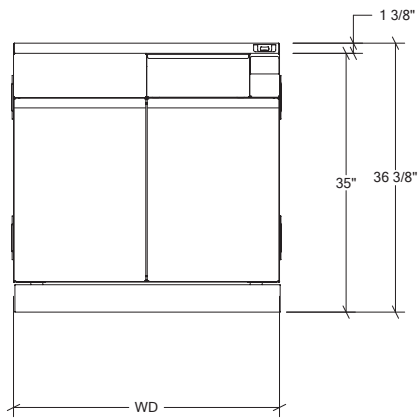
SINK BAR STATION

LINE COLLECTION

This truly unique cabinet integrates a built-in sink and slim drainboard. Inspired by the professional workspaces, it allows you to have your drink preparation tools and products at your fingertips. Bottles and ingredients can be placed on the drainboard or in the included containers. The top drawer is a practical bottle storage. The sink is insulated, which allows its use as an ice bin to cool drinks.

- The linear integrated handle design highlights the beauty and simplicity of the collection
- Bar station combining storage, preparation and service
- Insulated sink allowing to use as ice bucket for chilling drinks
- Ideal work surface for condiments preparation
- Slim multi-purpose drainboard for drying glasses, arranging bottles and condiment containers
- Drawer under the work surface turns into a bottle holder to house 3 to 4 bottles
- Bottle opener with removable receptacle completes the station
- Sink cover prevents debris from building up when kitchen is not in use
- Weather resistant cabinet due to efficient rubber gasket system on doors
- Soft-close hardware for soft and quiet closing of cabinets
- Included with sink: stainless steel condiments containers (2), sink cover, clip-on toe-kick, freestanding storage shelf
- Adjustable stainless steel feet, 2 of which allow anchoring on the ground

SKU	CABINET WIDTH "WD"	DOOR QTY	MSRP
HROK-SSJ7-800207	36"	2	\$ 6 200



À LA CARTE



316 L/S/S Construction



Back Panel
\$ 180



LED Lighting Bottom
\$ 280



Door/Drawer Lock
\$ 90

For more details about the À la Carte, please refer to page 59 of the document.

USEFUL ACCESSORIES



Bottle Holder
\$ 70



Boards/Cooking Sheets Holder
\$ 60

For more details about the accessories, please refer to page 65 of the document.

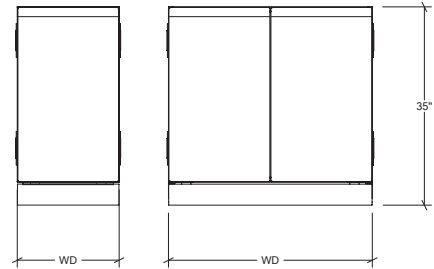
SINK BASE CABINET

LINE COLLECTION



The sink base cabinets allow installation of a standard sink to the countertop surface of your choice. These elegant commercial grade stainless steel cabinets protect your equipment from external aggressions.

- The linear integrated handle design highlights the beauty and simplicity of the collection
- Sink base cabinet for installation of a standard sink (sink not included)
- Weather resistant cabinet due to efficient rubber gasket system on doors
- Soft-close hardware for soft and quiet closing of cabinets
- Included: Cutting board, colander, drying rack, grid, sink cover, clip-on toe-kick, freestanding storage shelf
- Adjustable stainless steel feet, 2 of which allow anchoring on the ground



SKU	CABINET WIDTH "WD"	DOOR QTY	OPENING	MSRP
HROK-SB-800257	15"	1	Left hinges	\$ 2 200
HROK-SB-800258	15"	1	Right hinges	\$ 2 200
HROK-SB-800205	18"	1	Left hinges	\$ 2 300
HROK-SB-800206	18"	1	Right hinges	\$ 2 300
HROK-SB-800267	24"	1	Left hinges	\$ 2 500
HROK-SB-800268	24"	1	Right hinges	\$ 2 500
HROK-SB-800269	30"	2		\$ 2 800
HROK-SB-800213	36"	2		\$ 2 900

À LA CARTE

316 L S/S Construction	PURE Back Panel \$ 180	LED Lighting Bottom \$ 280	Door/Drawer Lock \$ 90
------------------------	---------------------------	-------------------------------	---------------------------

For more details about the À la Carte, please refer to page 59 of the document.

USEFUL ACCESSORIES

Boards/Cooking Sheets Holder \$ 60	Sliding Shelf \$ 210
---------------------------------------	-------------------------

For more details about the accessories, please refer to page 65 of the document.

GRILL CABINETS

Turning an outdoor meal into a truly memorable experience is far easier when you are well equipped. Our grill cabinets serve as the perfect base to support and enhance your BBQ. Plus, they have been thoughtfully designed to accommodate all the leading brands of ceramic grills, gas grills and dream grills on the market.

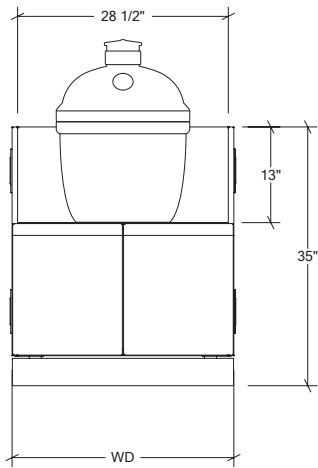
CERAMIC GRILL BASE

LINE COLLECTION

This specialty cabinet will accommodate your ceramic grill and is suitable for most 15" to 22" ceramic barbecues. The storage area allows you to store and protect all your cooking essentials, perfect for charcoal and wood. It is important to check the rear clearance recommended by the manufacturer when the installation is done against a wall.

- The linear integrated handle design highlights the beauty and simplicity of the collection
- Accommodates ceramic grills from the industry's most recognized brands (15" to 22" sizes)
- Perfect storage space for charcoal and multiple grill accessories
- Weather resistant cabinet due to efficient rubber gasket system on doors
- Soft-close hardware for soft and quiet closing of cabinets
- Adjustable stainless steel feet, 2 of which allow anchoring on the ground

SKU	CABINET WIDTH "WD"	DOOR QTY	MSRP
HROK-GRC-800214	30"	2	\$ 2 900



À LA CARTE



316 L/S Construction



Back Panel
\$ 180



LED Lighting Bottom
\$ 280



Door/Drawer Lock
\$ 90

For more details about the À la Carte, please refer to page 59 of the document.

USEFUL ACCESSORIES



Boards/Cooking Sheets Holder
\$ 60

For more details about the accessories, please refer to page 65 of the document.

GRILL BASE CABINET

LINE COLLECTION

The different sizes of grill cabinets accommodate most of the built-in grill and burners models from the best brands on the market. The storage space allows you to store and protect all your cooking essentials.

It is important to check the rear clearance recommended by the manufacturer when the installation is done against a wall.

** When ordering, you will need to provide the facade dimensions of your grill as we will fit the cabinet to your main cooking tool.

- The linear integrated handle design highlights the beauty and simplicity of the collection
- Accommodates built-in grills from the industry's most recognized brands (facade specifications to be provided)
- The cabinet construction allows airflow to the bottom, back and kick-plate
- Weather resistant cabinet due to efficient rubber gasket system on doors
- Soft-close hardware for soft and quiet closing of cabinet
- Included with cabinet: clip-on toe-kick
- Adjustable stainless steel feet, 2 of which allow anchoring on the ground
- Easy access provided for installation of the plumbing structure

SKU	CABINET WIDTH "WD"	DOOR QTY	OPENING	MSRP
HROK-GR-800259	15"	1	Left hinges	\$ 2 200
HROK-GR-800260	15"	1	Right hinges	\$ 2 200
HROK-GR-800261	18"	1	Left hinges	\$ 2 300
HROK-GR-800262	18"	1	Right hinges	\$ 2 300
HROK-GR-800275	24"	1	Left hinges	\$ 2 500
HROK-GR-800276	24"	1	Right hinges	\$ 2 500
HROK-GR-800278	30"	2		\$ 2 700
HROK-GR-800215	36"	2		\$ 2 900
HROK-GR-800216	42"	2		\$ 3 100
HROK-GR-800217	48"	2		\$ 3 400
HROK-GR-800274	54"	3		\$ 3 700



À LA CARTE



316 L/S Construction



Back Panel
\$ 180



LED Lighting Bottom
\$ 280



Door/Drawer Lock
\$ 90

For more details about the À la Carte, please refer to page 59 of the document.

USEFUL ACCESSORIES



Boards/Cooking Sheets Holder
\$ 60

For more details about the accessories, please refer to page 65 of the document.

STORAGE & SPECIALTY CABINETS

An outdoor kitchen should be as independent as possible, so that trips back and forth to the indoor kitchen are kept to a bare minimum. Our storage and specialty cabinets are designed to do just that, by allowing you to store the necessary items (think propane tanks, carts, recycling bins and the like) right where they need to be, all while adding the touches of functionality you need to make your outdoor kitchen your own.

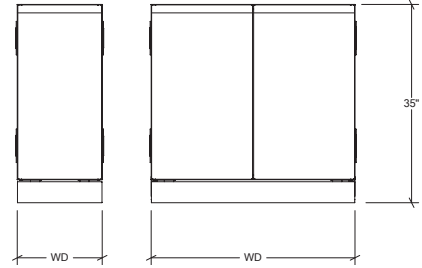
STORAGE CABINET

LINE COLLECTION



This storage cabinet with doors will allow you to store your cooking, preparation and service tools. These elegant commercial grade stainless steel cabinets protect your equipment. Some cabinets may be equipped with various accessories making them even more specialized.

- The linear integrated handle design highlights the beauty and simplicity of the collection
- Weather resistant cabinet due to efficient rubber gasket system on doors
- Soft-close hardware for soft and quiet closing of cabinets
- Included with cabinet: slim adjustable shelves (2), clip-on toe-kick
- Adjustable stainless steel feet, 2 of which allow anchoring on the ground



SKU	CABINET WIDTH "WD"	DOOR QTY	OPENING	MSRP
HROK-ST1D-800255	15"	1	Left hinges	\$ 2 200
HROK-ST1D-800256	15"	1	Right hinges	\$ 2 200
HROK-ST1D-800218	18"	1	Left hinges	\$ 2 300
HROK-ST1D-800219	18"	1	Right hinges	\$ 2 300
HROK-ST1D-800271	24"	1	Left hinges	\$ 2 500
HROK-ST1D-800272	24"	1	Right hinges	\$ 2 500
HROK-ST2D-800254	30"	2		\$ 2 800
HROK-ST2D-800224	36"	2		\$ 2 900

À LA CARTE

316 L S/S Construction	Back Panel \$ 180	LED Lighting Bottom \$ 280	Door/Drawer Lock \$ 90
------------------------	----------------------	-------------------------------	---------------------------

For more details about the À la Carte, please refer to page 59 of the document.

USEFUL ACCESSORIES

Bottle Holder \$ 70	Boards/Cooking Sheets Holder \$ 60	Storage Racking for Plastic Bins \$ 110	Storage Racking/ Half Pans \$ 190	Sliding Shelf \$ 210
------------------------	---------------------------------------	--	--------------------------------------	-------------------------

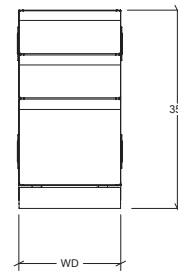
For more details about the accessories, please refer to page 65 of the document.

DRAWER STORAGE CABINET

LINE COLLECTION

The drawer storage unit has 3 drawers, dividing the storage space optimally. The sleek, commercial-grade stainless steel cabinet protects your equipment from external aggressions.

- The linear integrated handle design highlights the beauty and simplicity of the collection
- Cabinet 3 drawers in 1/4, 1/4, 1/2 configuration
- Elegant and refined drawers with invisible concealed slides
- Quiet closing thanks to full-extension soft-close slides
- Weather resistant cabinet due to efficient rubber gasket system on drawers
- Included with cabinet: clip-on toe-kick
- Adjustable stainless steel feet, 2 of which allow anchoring on the ground



SKU	CABINET WIDTH "WD"	DRAWERS QTY	MSRP
HROK-ST3D-800253	15"	3	\$ 2 800
HROK-ST3D-800220	18"	3	\$ 2 900

À LA CARTE

316 L S/S Construction	Back Panel \$ 180	LED Lighting Bottom \$ 280	Door/Drawer Lock \$ 90
------------------------	----------------------	-------------------------------	---------------------------

For more details about the À la Carte, please refer to page 59 of the document.

USEFUL ACCESSORIES

Table Knives Block \$ 80	Multifunction Tray \$ 95	Drawer Mat \$ 135	Wrapping Paper Dispenser \$ 120
-----------------------------	-----------------------------	----------------------	------------------------------------

For more details about the accessories, please refer to page 65 of the document.

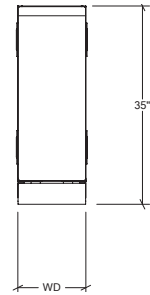
CHEF CABINET

LINE COLLECTION



This pull-out cabinet is perfect for storing BBQ spices and tools. It boasts two superposed storage compartments. Set it up next to your cooking station and everything will be within easy reach. This elegant commercial-grade stainless-steel cabinet protects your equipment from rodents, insects and harsh weather.

- The linear integrated handle design highlights the beauty and simplicity of the collection
- Optimized storage space for spices, bottles and specialty utensils
- Two-level full extension shelves
- Ideal for installation near the cooking station
- Elegant and refined drawers with concealed slides
- Weather resistant cabinet due to efficient rubber gasket system on doors
- Soft-close hardware for soft and quiet closing of cabinets
- Included with cabinet: clip-on toe-kick
- Adjustable stainless steel feet, 2 of which allow anchoring on the ground



SKU	CABINET WIDTH "WD"	DOOR QTY	MSRP
HROK-STCC-800230	12"	1	\$ 2 600

À LA CARTE

316 L S/S Construction	Back Panel \$ 180	LED Lighting Bottom \$ 280
------------------------	----------------------	-------------------------------

For more details about the À la Carte, please refer to page 59 of the document.

USEFUL ACCESSORIES

Multifunction Tray
\$ 95

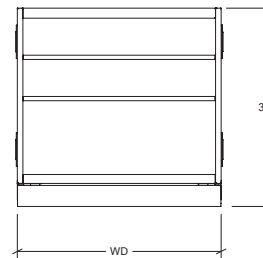
For more details about the accessories, please refer to page 65 of the document.

STORAGE OPEN



These open cabinets with shelves will keep your tools at your fingertips. The storage space is divided by the 3 shelves ($\frac{1}{4}$, $\frac{1}{4}$, $\frac{1}{2}$). Two types of open cabinets are available: the first may be attached to two cabinets as for the second, it is installed at the end of the counter because it is in front and on one side. They will look great on your installation.

- Uniform and refined look that blends with all collections
- Open cabinet with 3 fixed shelves
- Open front with closed sides for side-to-side installation or open front and side for end installation
- Included with cabinet: clip-on toe-kick
- Adjustable stainless steel feet, 2 of which allow anchoring to the ground



SKU	CABINET WIDTH "WD"	OPENING	MSRP
HROK-STOM-800021	18"	Open facade	\$ 1 600
HROK-STOC-800022	18"	Open facade and left side	\$ 1 600
HROK-STOC-800023	18"	Open facade and right side	\$ 1 600
HROK-STOM-800025	36"	Open facade	\$ 2 100

À LA CARTE

316 L S/S Construction	Back Panel \$ 180	LED Lighting Bottom \$ 280
------------------------	----------------------	-------------------------------

For more details about the À la Carte, please refer to page 59 of the document.

USEFUL ACCESSORIES

Bottle Holder
\$ 70

For more details about the accessories, please refer to page 65 of the document.

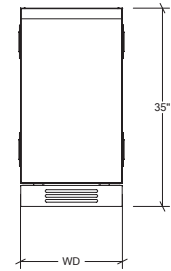
TANK CABINET

LINE COLLECTION



This cabinet is specialized to store a portable propane tank. When it is impossible to install a direct gas line, this ventilated cabinet, installed by the grill cabinet side, keeps the tank easily accessible thanks to its sliding shelf platform.

- The linear integrated handle design highlights the beauty and simplicity of the collection
- Storage cabinet for propane tank
- Full extension sliding shelf with specialized seat for tank
- Adjoining installation at the cooking station when the grill does not benefit from a permanent direct supply
- Weather resistant cabinet due to efficient rubber gasket system on doors
- Included with cabinet: clip-on toe-kick
- Adjustable stainless steel feet, 2 of which allow anchoring on the ground



SKU	CABINET WIDTH "WD"	DOOR QTY	OPENING	MSRP
HROK-STTK-800233	18"	1	Left hinges	\$ 2 600
HROK-STTK-800234	18"	1	Right hinges	\$ 2 600

À LA CARTE

316 L/S/S Construction	Back Panel \$ 180	LED Lighting Bottom \$ 280
------------------------	----------------------	-------------------------------

For more details about the À la Carte, please refer to page 59 of the document.

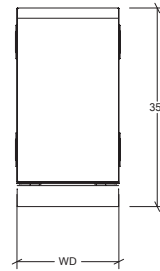
RECYCLING CABINET

LINE COLLECTION



Your recycling and garbage bins will be well protected in this pull-out cabinet. A shelf right above the bins is perfect for storing bags and accessories. This elegant cabinet is made of commercial-grade stainless steel.

- The linear integrated handle design highlights the beauty and simplicity of the collection
- Pull-out recycling and waste bin module
- Slim shelf included to keep bags and other accessories easily accessible
- Weather resistant cabinet due to efficient rubber gasket system on doors
- Included with cabinet: plastic bins 36L (2), clip-on toe-kick
- Adjustable stainless steel feet, 2 of which allow anchoring on the ground



SKU	CABINET WIDTH "WD"	DOOR QTY	MSRP
HROK-STTR-800235	18"	1	\$ 2 600

À LA CARTE

316 L S/S Construction	Back Panel \$ 180	LED Lighting Bottom \$ 280	Door/Drawer Lock \$ 90
------------------------	----------------------	-------------------------------	---------------------------

For more details about the À la Carte, please refer to page 59 of the document.

USEFUL ACCESSORIES

Multifunction Tray
\$ 95

For more details about the accessories, please refer to page 65 of the document.

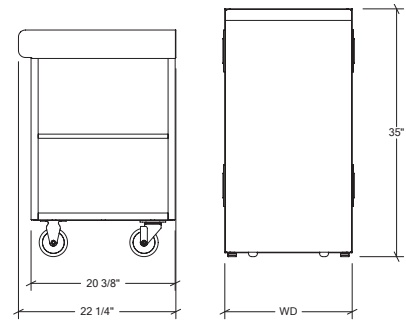
CART CABINET

LINE COLLECTION



This kitchen cart cabinet makes it easy to move your dishes, cutlery and food to and from your outdoor kitchen, and it has its own storage space to protect it from rodents, insects and harsh weather. The cabinet door comes with soft-close hinges like the cabinet doors in the rest of your kitchen. Both the door and the hinges are made of commercial-grade stainless steel.

- The linear integrated handle design highlights the beauty and simplicity of the collection
- Chic trolley and its storage cabinet
- Ideal for serving, moving dishes and other items
- Soft-close hardware for soft and quiet closing of cabinets
- Robust wheels ideal for all types of exterior surfaces
- Adjustable stainless steel feet, 2 of which allow anchoring on the ground



SKU	CABINET WIDTH "WD"	DOOR QTY	OPENING	MSRP
HROK-STTC-800228	18"	1	Left hinges	\$ 2 900
HROK-STTC-800229	18"	1	Right hinges	\$ 2 900

À LA CARTE

316 L/S/S Construction	Back Panel \$ 180	LED Lighting Bottom \$ 280	Door/Drawer Lock \$ 90
------------------------	----------------------	-------------------------------	---------------------------

For more details about the À la Carte, please refer to page 59 of the document.

USEFUL ACCESSORIES

Table Knives Block \$ 80	Multifunction Tray \$ 95	Drawer Mat \$ 135
-----------------------------	-----------------------------	----------------------

For more details about the accessories, please refer to page 65 of the document.

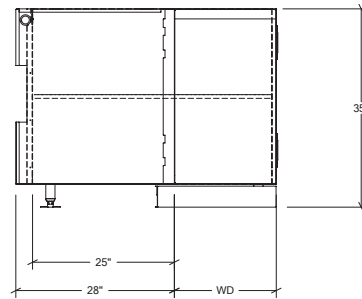
CORNER STORAGE CABINET

LINE COLLECTION



They come with a storage shelf behind a closed door equipped with wide-angle hinges. These elegant commercial-grade stainless steel cabinets protect your equipment from rodents, insects and harsh weather.

- The linear integrated handle design highlights the beauty and simplicity of the collection
- Optimization of the corner unit with spacious storage
- Optimized access space thanks to wide opening hinges
- Weather resistant cabinet due to efficient rubber gasket system on doors
- Soft-close hardware for soft and quiet closing of cabinets
- Included with cabinet: slim adjustable shelf (1), clip-on toe-kick
- Adjustable stainless steel feet, 2 of which allow anchoring on the ground



SKU	ANGLE	DOOR WIDTH "WD"	DOOR QTY	OPENING	MSRP
HROK-STC-800226	90°	18"	1	Left hinges	\$ 2 900
HROK-STC-800227	90°	18"	1	Right hinges	\$ 2 900

À LA CARTE

316 L S/S Construction	Back Panel Corner90 \$ 320	LED Lighting Bottom \$ 280	Door/Drawer Lock \$ 90
------------------------	----------------------------------	-------------------------------	---------------------------

For more details about the À la Carte, please refer to page 59 of the document.

USEFUL ACCESSORIES

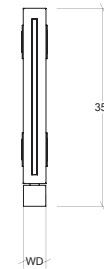
Boards/Cooking Sheets Holder
\$ 60

For more details about the accessories, please refer to page 65 of the document.

AMBIENCE

If setting the perfect mood requires the perfect lighting, look no further. We have a wide range of gorgeous integrated solutions to create just that. Thanks to our vertical lighting module, we ensure that each and every one of your culinary performances get their time in the spotlight.

LED LIGHTING MODULE



The ambience of your outdoor kitchen will define how you use it. Add LED lighting units to the ends of your layout or between cabinets to create an inviting space. You may choose a model that can accommodate electrical outlets (receptacle not included).

- Uniform and refined look that blends with all collections
- Lighting module with vertical lighting insert
- Aluminum extrusion with integrated diffuser encapsulates lighting strips
- With or without opening allowing installation of an electrical outlet (electrical box not included)
- LED warm lighting
- Included:
 - Control of intensity with a dimmer
 - 12V transformer with standard plug (1 per installation)
 - Needed wires to connect to adjacent cabinets
 - Additional 4-ft extension
 - Clip-on toe-kick

SKU	WIDTH "WD"	READY FOR ELECTRICAL OUTLET	MSRP
HROK-LEDL-800037	4"	No	\$ 1600
HROK-LEDL-800036	4"	Yes	\$ 1600

À LA CARTE

316 L S/S Construction	Back Panel \$ 180	LED Lighting Bottom \$ 280
------------------------	----------------------	-------------------------------

For more details about the À la Carte, please refer to page 59 of the document.

APPLIANCE CABINETS

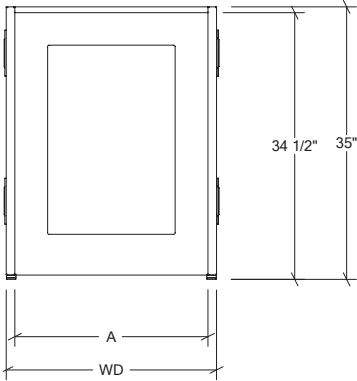
Plenty of thought has also been given to appliances, a chef's biggest allies. Nice and roomy, our appliance cabinets can comfortably fit, amongst other things, a fridge, dishwasher and wine cellar inside. By storing everything you could possibly need within arm's reach, your outdoor oasis will keep you exactly where you want to be: outdoors.

APPLIANCES CABINET

An appliance cabinet is an easy way to integrate any outdoor-grade undercounter appliance. Fridges, wine cellars, and dishwashers will fit seamlessly into your kitchen layout between two cabinets or at one end. This item is made of commercial-grade stainless steel.

- Welcomes exterior grade sub-counter appliances (fridge, pantry, dishwasher, etc.)
- Allows the installation of a back panel when the kitchen structure is visible from all sides
- Adjustable stainless steel feet

SKU	CABINET WIDTH "WD"	CABINET WIDTH "A"	MSRP
HROK-APP-800070	18"	15.75"	\$ 800
HROK-APP-800031	24"	21.95"	\$ 900
HROK-APP-800032	27"	24.95"	\$ 1000



À LA CARTE



316 L/S/S Construction



Back Panel
\$ 180

For more details about the À la Carte, please refer to page 59 of the document.

FILLERS, COUNTERTOPS AND LEGS

Perfection is a beautiful thing. Which why we go above and beyond to help our customers achieve it. All the fillers we offer provide increased flexibility. Now, it's possible to design and create an idyllic outdoor kitchen, right down to the smallest detail, simply by adjusting the layout dimensions.

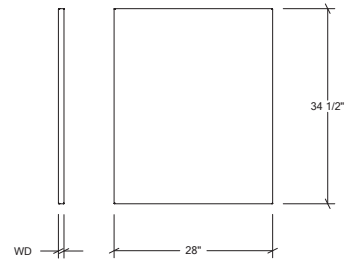
Let's say you want to set up a lunch corner. All you have to do is attach our pre-assembled legs to an extension of your countertop, add some stools and you're good to go!

END FILLER



This panel fits over the end of your cabinet layout to hide the structure when it's visible. This item is made of commercial-grade stainless steel.

- Lateral panel characterized by a uniform and refined look that blends with all collections
- Easily installed at the ends of a configuration when exposed
- Elegant brushed finish



SKU	CABINET WIDTH "WD"	OPENING	MSRP
HROK-EFLR-800043	1"	Left	\$ 300
HROK-EFLR-800044	1"	Right	\$ 300

LINEAR FILLER



The linear filler panel lets you fine tune the dimensions of your layout. It can be inserted easily between two cabinets.

- Uniform and refined look that blends with all collections
- Linear facade insert to make a fine adjustment of the dimensions of your kitchen configuration by adding between modules
- With or without opening allowing installation of an electrical outlet (electrical box not included)
- Included: clip-on toe-kick

SKU	CABINET WIDTH "WD"	READY FOR ELECTRICAL OUTLET	MSRP
HROK-LFLR-800046	2"	No	\$ 220
HROK-LFLR-800047	4"	No	\$ 220
HROK-LFLR-800048	4"	Yes	\$ 220
HROK-LFLR-800049	6"	No	\$ 220

À LA CARTE

316 L S/S Construction	Back Panel \$ 180	LED Lighting Bottom \$ 280
------------------------	----------------------	-------------------------------

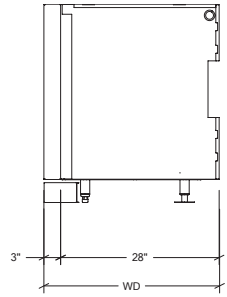
For more details about the À la Carte, please refer to page 59 of the document.

CORNER90 FILLER



This module can be rotated 90 degrees without adding space. It can is designed to make a 90 degrees corner cabinets. This item is made of commercial-grade stainless steel.

- Uniform and refined look module that blends with all collections
- This 90-degree corner insert allows to make a change of direction in kitchen layout
- Included: clip-on toe-kick



SKU	ANGLE	CABINET WIDTH "WD"	MSRP
HROK-CFLR-800045	90°	31 1/8"	\$ 1400

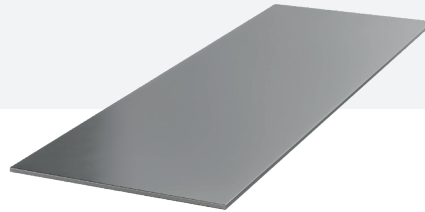
À LA CARTE

316 L/S/S Construction Back Panel Corner90
\$ 320

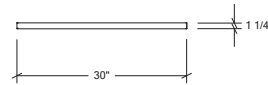
For more details about the À la Carte, please refer to page 59 of the document.

COUNTERTOPS

PURE COLLECTION



Stainless steel is a preferred material for kitchen island counters. It has strong antibacterial properties, making it perfect for food preparation. What's more, hot pots can be placed on it without any risk.



CUSTOM SURFACES

Through the Signature concept, we can manufacture custom stainless steel items for customers with unique needs and tastes. Looking for that exclusive countertop adapted to the configuration of your outdoor kitchen? Set your imagination free and design your very own Signature item.

To learn more about the Signature concept, visit our website.

homerefinelements.ca/signature

LINEAR SECTIONS

Linear sections are available in custom lengths to cover certain sections of your layout.

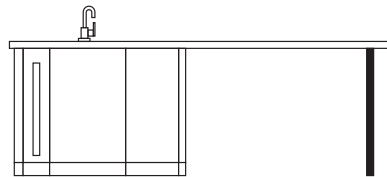
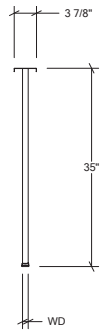
SKU	THICKNESS	DEPTH	MSRP
Linear Sections	1 1/4"	30"	\$ 320 (linear foot)
CUSTOM	To request a quote, fill out the Signature forms available online or contact a member of our customer service department.		

LUNCH COUNTERTOP LEG



These stainless-steel legs for lunch spaces can support a table surface and easily turn your outdoor kitchen into a welcoming dining room. The legs are adjustable to make sure your table is level. This item is made of commercial-grade stainless steel.

- Leg characterized by a uniform and refined look that blends with all collections
- Ideal for supporting the work surface to create a practical lunch space
- Adjustable stainless steel feet



SKU	WIDTH "WD"	MSRP
HROK-CTLG-800038	1"	\$ 380

À LA CARTE

Not all outdoor spaces are created equal. So having À la Carte options is crucial for designing the optimal kitchen for your home. We are experts in adapting designs to any environment, and bringing you as close to nature as possible.

À LA CARTE

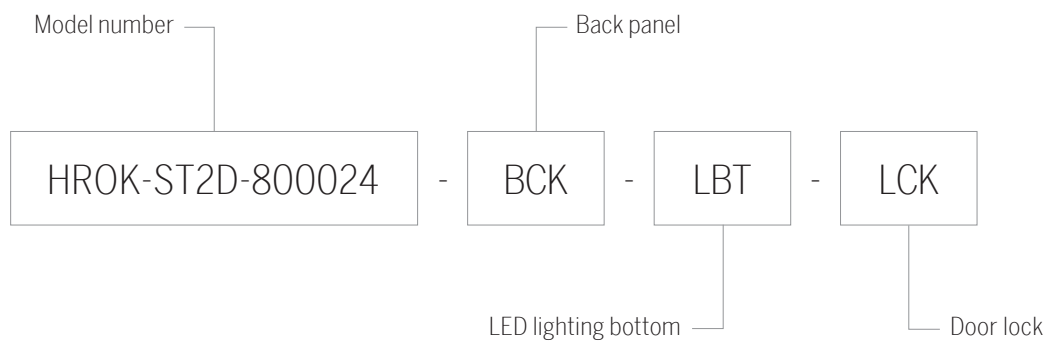
OUTDOOR KITCHEN OPTIONS

How to create your product number

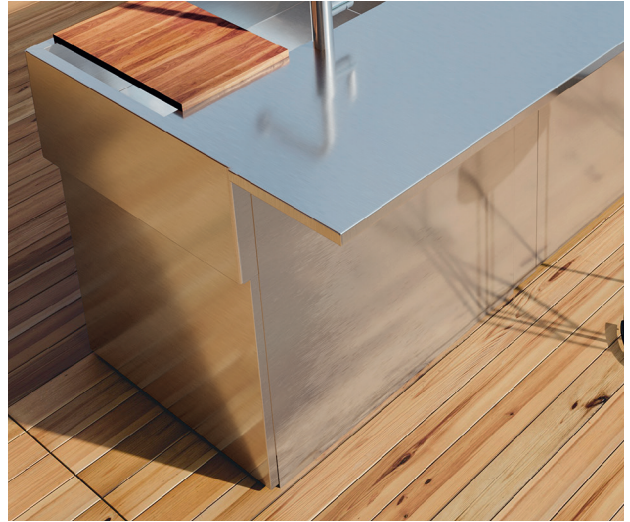
An À la Carte product number is always composed of two types of information:

1. The model number of the chosen cabinet or module, taken from the standard collections, forms the basis for the number.
2. The code(s) referring to the various options added to the basic sink are set off by dashes.

Use this code to place your order.



316L S/S CONSTRUCTION BACK PANEL



- Exceptional degree of corrosion resistance for installation in coastal areas and saline environments (grade composed of a molybdenum alloy) replacing the standard grade



- Uniform and refined look that blends with all collections
- Linear and corner back panel
- Covers effectively the area of passage of the mechanical services of each cabinet

SKU	MSRP	SKU	CABINET TYPE	MSRP
316	Contact us	BCK	Linear	\$ 180
		BC	Corner	\$ 320

LED LIGHTING BOTTOM

DOOR/DRAWER LOCK



- Ambient lighting at the bottom of the cabinets
- Aluminum extrusion with integrated diffuser encapsulates lighting strips
- LED warm lighting
- Included:
 - Control of intensity with a dimmer
 - 12V transformer with standard plug (qty depending on installation)
 - Needed wires to connect to adjacent cabinets
 - Additional 4-ft extension

- Allows to secure the contents of the cabinets and keep cabinets weathertight during high winds
- Extra security preventing animals from taking refuge in the cabinets

SKU	MSRP
LBT	\$ 280

SKU	MSRP
LCK	\$ 90

ACCESSORIES

We believe that accessories are a necessity. But far from providing nothing but functionality, all our accessories are the height of luxury, tastefully designed and designed with flair, always bringing out the very best in every outdoor kitchen they adorn. So take a long look at our comprehensive selection and imagine all possibilities that lay before you.

KNIFES BLOCK



- Holds table or chef knives
- Stainless steel handle with elegant brushed finish
- Maple Blade Protector Divider

MULTIFUNCTION
TRAY LONG

- 4-sided tray in elegant brushed finish stainless steel
- Allows you to separate utensils and various accessories in drawers or on shelves
- Ends stretched for better grip during transport
- Divider(s) included to partition the tray or be used on their own

SKU		MSRP
HROK-ACC-805000	Table knives	\$ 80
HROK-ACC-805001	Chef knives	\$ 90

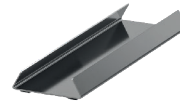
SKU		MSRP
HROK-ACC-805002	3,5" x 16,5"	\$ 95
HROK-ACC-805003	7" x 16,5"	\$ 95
HROK-ACC-805004	3,5" x 14,5"	\$ 95

WRAPPING PAPER DISPENSER



- Divider for quick storage and access to wrapping paper (plastic wrap, aluminum foil)
- Facilitates paper cutting
- Easy roll replacement
- Can be handled inside or outside the drawer

BOTTLE HOLDER



- Accommodates and stabilizes bottles of different diameters
- Easily positioned on any horizontal surface

SKU

MSRP

HROK-ACC-805005

\$ 120

SKU

MSRP

HROK-ACC-805006

\$ 70

LEATHER DRAWER MAT

BOARDS/TRAY HOLDER



- Protects storage surfaces
- Attenuates noise caused by tools and metal tools
- Vegetable tanned leather
- Elegant texture-free finish
- Made by hand in Canada by local craftsmen



- Allows the storage of boards and plates up to 1.5" thick
- Starter set includes 2 supports
- Multiple sets of dividers can be combined as desired
- Easily attaches to most outdoor kitchen cabinets with door (s)

SKU

MSRP

HROK-ACC-805008

\$ 135

SKU

MSRP

HROK-ACC-805007

\$ 60

STORAGE RACKING FOR PLASTIC BINS



- Storage system with plastic bins
- Includes 2 heavy-duty plastic storage bins
- Possibility of installing 2 systems per cabinet, one above the other
- Easy installs on existing 1-door cabinets 18" wide

STORAGE RACKING FOR STAINLESS STEEL PANS



- Stainless Steel Container Storage System / Pans & Half-pans
- Includes 3 stainless steel containers (2 half-pans / 1 full pan)
- Possibility of installing 2 systems per cabinet, one above the other
- Easy installs on existing 1-door cabinets 18" wide

SKU

MSRP

HROK-ACC-805009

\$ 110

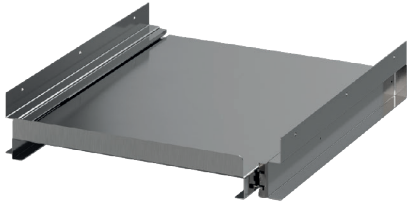
SKU

MSRP

HROK-ACC-805010

\$ 190

SLIDING SHELF



- Practical sliding shelf system
- Easily installs on existing 1-door cabinets
- Possibility of installing 2 shelves per cabinet
- Features back support to keep accessories on the shelf

SKU

MSRP

HROK-ACC-805011

\$ 210

PRODUCT	PAGE	PRICE
HROK-SSSM-800201	12	\$ 4 900
HROK-SSSM-800202	12	\$ 4 900
HROK-SSSM-800203	12	\$ 4 900
HROK-SSSM-800204	12	\$ 4 900
HROK-SB-800205	18	\$ 2 300
HROK-SB-800206	18	\$ 2 300
HROK-SSJ7-800207	16	\$ 6 200
HROK-SSSM-800209	12	\$ 5 900
HROK-SSSM-8000210	12	\$ 5 900
HROK-SSSC-800211	14	\$ 5 600
HROK-SSSC-800212	14	\$ 5 600
HROK-SB-800213	18	\$ 2 900
HROK-GRC-800214	20	\$ 2 900
HROK-GR-800215	22	\$ 2 900
HROK-GR-800216	22	\$ 3 100
HROK-GR-800217	22	\$ 3 400
HROK-STID-800218	26	\$ 2 300
HROK-STID-800219	26	\$ 2 300
HROK-ST3D-800220	27	\$ 2 900
HROK-STOM-800021	29	\$ 1 600
HROK-STOC-800022	29	\$ 1 600
HROK-STOC-800023	29	\$ 1 600
HROK-ST2D-800224	26	\$ 2 900
HROK-STOM-800025	29	\$ 2 100
HROK-STC-800226	33	\$ 2 900
HROK-STC-800227	33	\$ 2 900
HROK-STTC-800228	32	\$ 2 900
HROK-STTC-800229	32	\$ 2 900
HROK-STCC-800230	28	\$ 2 600
HROK-APP-800031	38	\$ 900
HROK-APP-800032	38	\$ 1 000
HROK-STTK-800233	30	\$ 2 600
HROK-STTK-800234	30	\$ 2 600
HROK-STTR-800235	31	\$ 2 600
HROK-LEDL-800036	36	\$ 1 600

PRODUCT	PAGE	PRICE
HROK-LEDL-800037	36	\$ 1 600
HROK-CTLG-800038	46	\$ 380
HROK-EFLR-800043	42	\$ 300
HROK-EFLR-800044	42	\$ 300
HROK-CFLR-800045	44	\$ 1 400
HROK-LFLR-800046	43	\$ 220
HROK-LFLR-800047	43	\$ 220
HROK-LFLR-800048	43	\$ 220
HROK-LFLR-800049	43	\$ 220
HROK-ST3D-800253	27	\$ 2 800
HROK-ST2D-800254	26	\$ 2 800
HROK-STID-800255	26	\$ 2 200
HROK-STID-800256	26	\$ 2 200
HROK-SB-800257	18	\$ 2 200
HROK-SB-800258	18	\$ 2 200
HROK-SSSM-800263	12	\$ 5 600
HROK-SSSM-800264	12	\$ 5 600
HROK-SSSC-800265	14	\$ 5 400
HROK-SSSC-800266	14	\$ 5 400
HROK-SB-800267	18	\$ 2 500
HROK-SB-800268	18	\$ 2 500
HROK-SB-800269	18	\$ 2 800
HROK-APP-800070	38	\$ 800
HROK-STID-800271	26	\$ 2 500
HROK-STID-800272	26	\$ 2 500
HROK-ACC-805000	54	\$ 80
HROK-ACC-805001	54	\$ 90
HROK-ACC-805002	54	\$ 95
HROK-ACC-805003	54	\$ 95
HROK-ACC-805004	54	\$ 95
HROK-ACC-805005	55	\$ 120
HROK-ACC-805006	55	\$ 70
HROK-ACC-805007	56	\$ 60
HROK-ACC-805008	56	\$ 135
HROK-ACC-805009	57	\$ 110

PRODUCT	PAGE	PRICE
HROK-ACC 805010	57	\$ 190
HROK-ACC 805011	58	\$ 210
OPTIONS À LA CARTE		
316	49	Contact us
BCK	49	\$ 180
BC	49	\$ 320
LCK	50	\$ 90
LBT	50	\$ 280
HBG	51	\$ 65

WARRANTY

Generalities

Home Refinements may at its sole option, repair, replace or make appropriate adjustments to the Product or components proven to be defective in order to restore to good working condition.

In no event, even if Product or components are found to be defective, shall Home Refinements' liability exceed the price paid for the Product. Home Refinements reserves the right to inspect the installation prior to the replacement or repair of the Product or its component parts. Home Refinements may at its discretion require pictures prior to analyzing a claim. This limited warranty is null and void if the Product or components have been repaired, altered or modified other than by Home Refinements or under its supervision.

This limited warranty replaces any and all other warranty, expressed or implied, including implied warranties of merchantability or fitness for a particular purpose. Laws governing product warranties may vary from one state or province to another. This warranty is not intended to contravene to the public order and shall not be so interpreted. This limited warranty extends only to the original owner/end user in residential applications and is not transferable to any subsequent purchaser. In the event of a warranty claim, original proof of purchase (sales receipt) will be required. Shipping and handling costs (for returning the product or components for repairs or to replace product or components) are not covered under this limited warranty. Also excluded from this limited warranty is any labor, workmanship or other costs

incurred in connection with the Product or components removal, repairs, replacement, adjustment or installation and any incidental or consequential damages.

ATTENTION > Warranty will be null and void for any damage resulting from installation not respecting the instructions and Home Refinements will not be held responsible for any costs incurred. In the event of a limited warranty claim, original proof of purchase will be required – save original sales receipt.

Outdoors Kitchen

Home Refinements offers a LIFETIME warranty against any manufacturing or materials defect on all outdoor kitchen stainless steel products, provided that the Client, or the final user, makes a normal, residential and reasonable use of the products.

Home Refinements offers a TWO (2) YEAR warranty against any manufacturing or materials defect on all hardware products (slides, hinges, etc.), provided that the Client, or the final user, makes a normal, residential and reasonable use of the products.

Home Refinements offers ONE (1) YEAR warranty against any manufacturing or materials defect on all electronic or lighting components, options and accessories provided that the Client, or the final user, makes a normal, residential and reasonable use of the products.

EXCLUSIONS : this warranty explicitly excludes the following elements:

- Chemical or natural surface corrosion (namely because of salt water)*;
- Scuffs or scratches;
- Damage caused by misuse, abnormal or abusive use or negligence;
- Damage caused during transportation;
- Damages caused by environmental factors;
- Commercial use of the products;
- Defect or damage caused by an improper installation;
- Bumps or deformation caused by the impact of any object;
- Normal wear;
- Installation, maintenance or care related problems.

If you believe you have a warranty claim or for more information on the warranty of our products, please contact our customer service.

Customer service

1 866 901-5624

customerservice@homerefinements.ca

RESSOURCES

Customer Service

Our Customer Service Department is totally committed to providing support before, during, and after purchase. If you have a question or would like to place an order, a member of our team will be happy to provide advice and assistance. Contact us Monday to Friday, 8 a.m. to 5 p.m. EST.

1 866 901-5624
customerservice@homerefinements.ca

Extranet

Whether it's to look at our inventory of products, place an order outside of business hours, or check your order history or status, we provide a user-friendly extranet. You will also find a host of valuable tools such as electronic versions of brochures and price lists.

extranet.julien.ca

Website

For more information about our products or to download their technical specifications, visit our website.

homerefinements.ca

SHIPPING COSTS

Accessories and small parcels

Shipping charges for small orders of accessories will be handled via the standard small parcel service. If you want to receive your order faster or if the delivery address is located outside the continental United States or Canada, please contact our Customer Service to check shipping charges.

1 866 901-5624
customerservice@homerefinelements.ca

Cabinets and modules

Shipping costs are determined by weight, size and destination. We are associated with companies specialized in this type of delivery and can make you benefit from our negotiated preferential rates. At the time of order, a member of our Customer Service team will contact you to confirm the delivery parameters and send you a cost estimate.

Shipping steps :

1. Indicate the chosen delivery method (below) to our Customer Service associate
2. The order is picked up at our warehouse
3. The order is shipped to a delivery center near your location
4. A delivery appointment is confirmed
5. Your order is delivered (an adult (18+) must be on site). Be sure to check the packages condition

DELIVERY METHODS AVAILABLE

Standard (front of the address)

A qualified delivery team will unload your order from the delivery truck and lower it to the outside sidewalk of your home. You will be responsible for moving the goods beyond this point.

Appointment: The delivery partner will contact you to arrange a date and time range of once the order arrives at the local warehouse.

Delivery zone: in front of the address

Unpacking: no

Assembly: no

Elite delivery (moving to the chosen location & unpacking)

This option offers a qualified delivery team to transport your items to the location of your choice *. The packaging will be removed and disposed of for your convenience.

* Transport on a different floor limited to a flight of stairs (up to 15 steps).

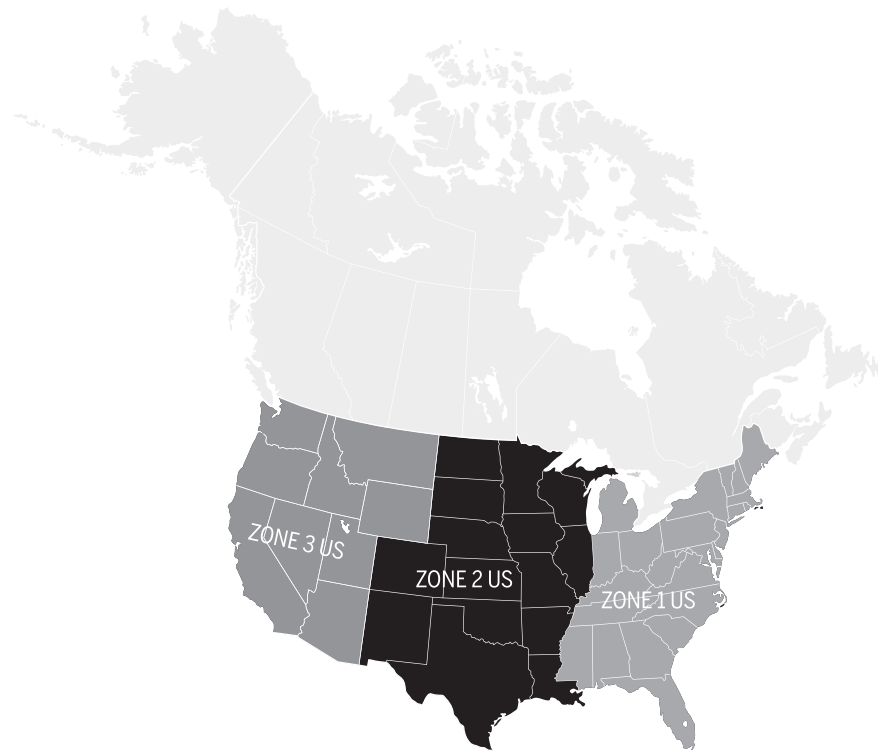
Appointment: The delivery partner will contact you to arrange a date and time range of once the order arrives at the local warehouse.

Delivery zone: in front of the address

Unpacking: yes

Assembly: no

ESTIMATED SHIPPING COSTS



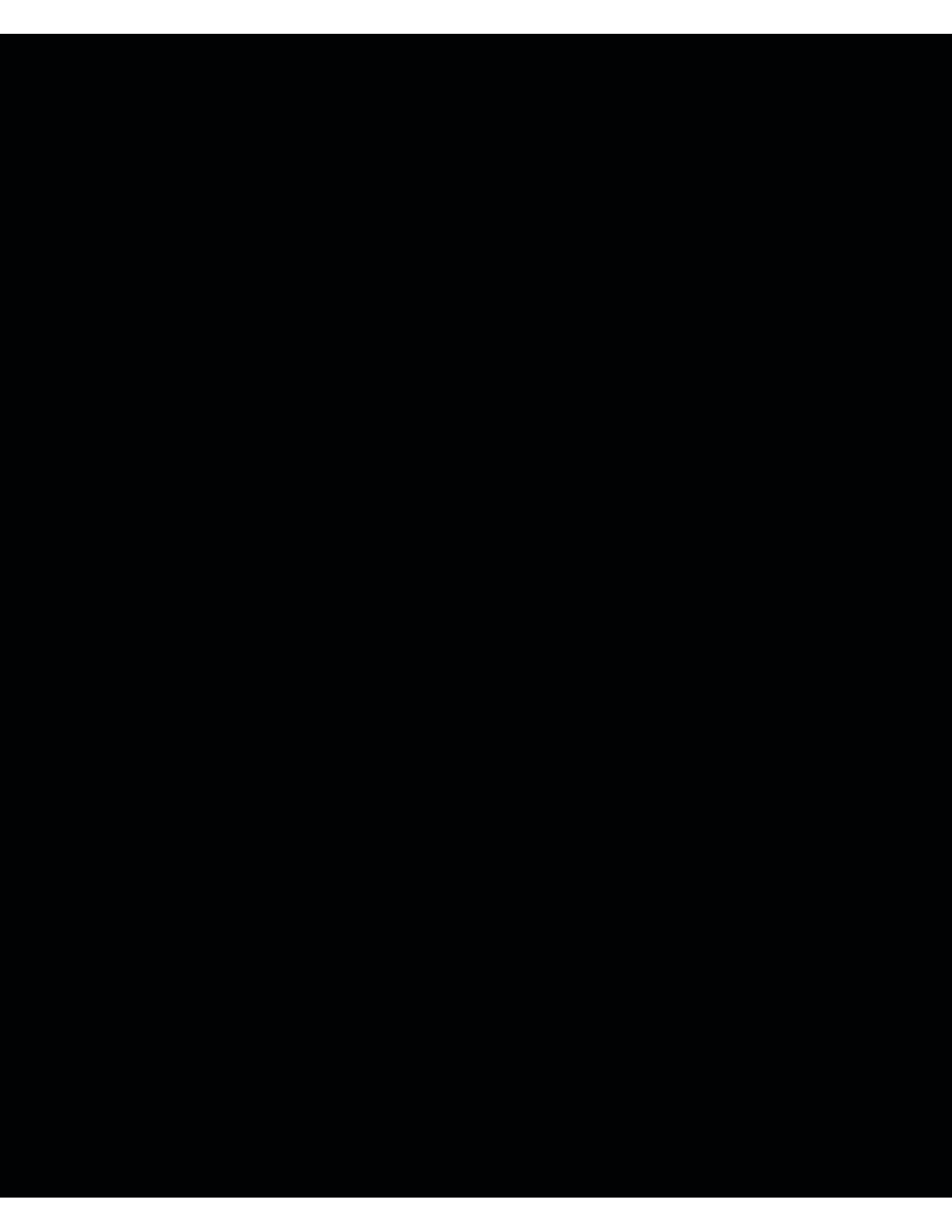
The shipping costs are **estimates** for a kitchen of approximately **10ft x 10ft** (around 12 cabinets) according to the following territories.

Complete kitchen (12 modules)

Zone 1 US	1100-1600 USD
Zone 2 US	1900 USD
Zone 3 US	2800 USD

Each module

Zone 1 US	92-135 USD
Zone 2 US	160 USD
Zone 3 US	235 USD



© Julien 2020 – All rights reserved. Printed in Canada.

HOME
REFINEMENTS

JULIEN

1 866 901-5624
customerservice@homerefinelements.ca

955, rue Lachance, Québec (Québec)
Canada G1P 2H3

Stay tuned for our many new products by visiting our website: homerefinelements.ca

#996312025