

DCS PICTURE PRICE GUIDE



NOVEMBER 1, 2019

TABLE OF CONTENTS

Series 9 Grills01
Series 7 Grills02
Series 7 Liberty Grills05
Series 7 Side Burners06
Joining Solutions07
Freestanding Grill Carts08
Side Shelves, And Cart Accessories10
Refrigeration11
Refrigeration Accessories12
Beer Dispensers13
Beverage Chiller And Accessory14
Access Drawers15
Access Doors17
Tower Drawers19
Trash Bin21
Dry Pantry22
Outdoor Warming Drawer23
Built-In Patio Heater24
Insulated Jackets25
Storage Units26
Grill Covers27
Accessories31

SERIES 9 GRILLS



MODEL no. (Natural / LP)	BE1-48RC-N / BE1-48RC-L	BE1-36RC-N / BE1-36RC-L
Price (UMRP)	\$5,799	\$4,799
SKU (Natural / LP)	71328 / 71329	71330 / 71331
Type of appliance	48" Series 9 Grill	36" Series 9 Grill
Product Dimensions	D: 26 7/8" x W: 47 15/16" x H: 27 1/4"	D: 26 7/8" x W: 35 15/16" x H: 27 1/4"
Cutout Dimensions	D: 22 3/4" x W: 45 3/4" x H: 10 1/8"	D: 22 3/4" x W: 34 1/2" x H: 10 1/8"
Cooking Surface Area	1593 sq in	1164 sq in
Primary Cooking Area	855 sq in	630 sq in
Secondary Cooking Area	738 sq in	534 sq in
Features		
Full Surface Searing	●	●
Double Sided Grill Grates	Flat and angled position	Flat and angled position
Grease Management System™	●	●
Secondary cooking	2-level racks and tray	2-level racks and tray
Full charcoal burner/smoker	●	●
Giddle Plate	BGC-GP (optional) (\$299)	BGC-GP (optional) (\$299)
Hybrid IR Burner	BGC-IR (optional) (\$299)	BGC-IR (optional) (\$299)
Rotisserie	●	●
One Step Direct Burner Ignition	Hot surface ignition	Hot surface ignition
304 Grade Stainless Steel	●	●
Hood Temperature Gauge	●	●
Total Power in BTU (NG)	118,000	89,000
U-Burner Power in BTU (NG)	4 x 25,000	3 x 25,000
Rotisserie Burner Power in BTU (NG)	18,000	14,000
Install Options		
Built-in	● (Optional insulated jacket BGA48-IJS (\$849) / BGA54-IJS (\$899))	● (Optional insulated jacket BGA36-IJS (\$799) / BGA42-IJS (\$819))
On Cart (to be ordered separately)	CAD1-48E (\$2,399)	CAD1-36E (\$1,999)
Cover Options (Purchased Separately)		
Built-in / On Cart	ACBI-48E (\$159) / ACC-48E (\$239)	ACBI-36E (\$129) / ACC-36E (\$199)
Gas Requirements		
1/2" NPT Male	●	●
LP Hose with Regulator and Type 1 Connector (LP only)	●	●
Optional Accessories		
6" Series 9 Accessory Storage Unit	ASE6-48 (\$299)	ASE6-36 (\$299)
Warranty		
Limited Lifetime Warranty on Select Components* Labor	● Limited 2 years	● Limited 2 years

SERIES 7 GRILLS



MODEL no. (Natural / LP)	BH1-48R-N / BH1-48R-L	BH1-48RS-N / BH1-48RS-L
Price (UMRP)	\$5,199	\$4,699
SKU (Natural / LP)	71299 / 71300	71297 / 71298
Type of appliance	48" Series 7 Grill	48" Series 7 Grill with Integrated Side Burners
Product Dimensions	D: 26 5/8" x W: 47 7/8" x H: 24 1/4"	D: 26 5/8" x W: 47 7/8" x H: 24 1/4"
Cutout Dimensions	D: 22 3/4" x W: 45 3/4" x H: 10 1/8"	D: 22 3/4" x W: 45 3/4" x H: 10 1/8"
Cooking Surface Area	1182 sq in	1115 sq in
Primary Cooking Area	855 sq in	630 sq in
Warming Rack Area	327 sq in	241 sq in
Side Burner Area		244 sq in
Features		
Full Surface Searing	●	●
Double Sided Grill Grates	●	●
Grease Management System™	●	●
Warming Rack	●	●
Griddle Plate	BGC-GP (optional) (\$299)	BGC-GP (optional) (\$299)
Hybrid IR Burner	BGC-IR (optional) (\$299)	BGC-IR (optional) (\$299)
Rotisserie	●	●
Side Burners		●
One Step Direct Burner Ignition	Spark ignition	Spark ignition
304 Grade Stainless Steel	●	●
Hood Temperature Gauge	●	●
Total Power in BTU (NG)	121,500	126,500
U-Burner Power in BTU (NG)	4 x 25,000	3 x 25,000
Side Burner Power in BTU (NG)		2 x 17,000
Rotisserie Burner Power in BTU (NG)	18,000	14,000
Smoker Burner Power in BTU (NG)	3,500	3,500
Install Options		
Built-in	● (Optional insulated jacket BGA48-IJS (\$849) / BGA54-IJS (\$899))	● (Optional insulated jacket BGA48-IJS (\$849) / BGA54-IJS (\$899))
On Cart (to be ordered separately)	CAD1-48 (\$2,399)	CAD1-48 (\$2,399)
Cover Options (Purchased Separately)		
Built-in / On Cart	ACBI-48 (\$159) / ACC-48 (\$239)	ACBI-48SB (\$159) / ACC-48SB (\$219)
Gas Requirements		
1/2" NPT Male with a 3/8" Flare Adapter	●	●
LP Hose with Regulator and Type 1 Connector (LP only)	●	●
Optional Accessories		
6" Series 7 Accessory Storage Unit	ASH6-48 (\$299)	ASH6-48 (\$299)
Warranty		
Limited Lifetime Warranty on Select Components*	●	●
Labor	Limited 2 years	Limited 2 years

SERIES 7 GRILLS



MODEL no. (Natural / LP)	BH1-36R-N / BH1-36R-L
Price (UMRP)	\$3,999
SKU (Natural / LP)	71301 / 71302
Type of appliance	36" Series 7 Grill
Product Dimensions	D: 26 5/8" x W: 35 7/8" x H: 24 1/4"
Cutout Dimensions	D: 22 3/4" x W: 34 1/2" x H: 10 1/8"
Cooking Surface Area	871 sq in
Primary Cooking Area	630 sq in
Warming Rack Area	241 sq in
Side Burner Area	
Features	
Full Surface Searing	●
Double Sided Grill Grates	●
Grease Management System™	●
Warming Rack	●
Griddle Plate	BGC-GP (optional) (\$299)
Hybrid IR Burner	BGC-IR (optional) (\$299)
Rotisserie	●
Side Burners	●
One Step Direct Burner Ignition	●
304 Grade Stainless Steel	●
Hood Temperature Gauge	●
Total Power in BTU (NG)	92,500
U-Burner Power in BTU (NG)	3 x 25,000
Rotisserie Burner Power in BTU (NG)	14,000
Smoker Burner Power in BTU (NG)	3,500
Install Options	
Built-in	● (Optional insulated jacket BGA36-IJS (\$799) / BGA42-IJS (\$819))
On Cart (to be ordered separately)	CAD1-36 (\$1,999)
Cover Options (Purchased Separately)	
Built-in / On Cart	ACBI-36 (\$129) / ACC-36 (\$199)
Gas Requirements	
1/2" NPT Male with a 3/8" Flare Adapter	●
LP Hose with Regulator and Type 1 Connector (LP only)	●
Optional Accessories	
6" Series 7 Accessory Storage Unit	ASH6-36 (\$299)
Warranty	
Limited Lifetime Warranty on Select Components*	●
Labor	Limited 2 years

SERIES 7 GRILLS



MODEL no. (Natural / LP)	BH1-30R-N / BH1-30R-L	BGC30-BQ-N / BGC30-BQ-L
Price (UMRP)	\$2,799	\$2,199
SKU (Natural / LP)	71303 / 71304	71123 / 71124
Type of appliance	30" Series 7 All Grill	30" Series 7 Grill, Non-Rotisserie
Product Dimensions	D: 26 5/8" x W: 30" x H: 24 1/4"	D: 27 5/16" x W: 30" x H: 24 1/4"
Cutout Dimensions	D: 22 3/4" x W: 28 1/2" x H: 10 1/8"	D: 22 3/4" x W: 28 1/2" x H: 10 1/8"
Cooking Surface Area	748 sq in	748 sq in
Primary Cooking Area	553 sq in	553 sq in
Warming Rack Area	195 sq in	195 sq in
Features		
Full Surface Searing	●	●
Warming Rack	●	●
Rotisserie	●	
One Step Direct Burner Ignition	●	●
304 Grade Stainless Steel	●	●
Hood Temperature Gauge	●	
Total Power in BTU (NG)	64,000	50,000
U-Burner Power in BTU (NG)	2 x 25,000	2 x 25,000
Rotisserie Burner Power in BTU (NG)	14,000	
Install Options		
Built-in	● (Optional insulated jacket BGB30-IJS (\$699))	● (Optional insulated jacket BGB30-IJS (\$699))
On Cart (to be ordered separately)	CSS-30 (\$799) / CAD1-30 (\$1,499)	CSS-30 (\$799) / CAD1-30 (\$1,499)
Cover Options (Purchased Separately)		
Built-in / On Cart	ACBI-30 (\$119) / ACC-30 (\$169)	ACBI-30 (\$119) / ACC-30 (\$169)
Gas Requirements		
1/2" NPT Male with a 3/8" Flare Adapter	●	●
LP Hose with Regulator and Type 1 Connector (LP only)	●	●
Warranty		
Limited Lifetime Warranty on Select Components*	●	●
Labor	Limited 2 years	Limited 2 years

SERIES 7 | LIBERTY GRILLS



MODEL no. (Natural / LP)	BFGC-30G-N / BFGC-30G-L	BFGC-30BGD-N / BFGC-30BGD-L
Price (UMRP)	\$1,999	\$1,899
SKU (Natural / LP)	71125 / 71126	71127 / 71128
Type of appliance	30" Series 7 All Grill	30" Series 7 Side Burner and Griddle
Product Dimensions (excluding covers)	D: 26 5/8" x W: 30" x H: 10 1/2"	D: 26 5/8" x W: 30" x H: 10 1/2"
Cutout Dimensions (proud installation)	D: 22 3/4" x W: 28 1/2" x H: 10 1/8"	D: 22 3/4" x W: 28 1/2" x H: 10 1/8"
Cooking Surface Area	525 sq in	244 sq in
Features		
Full Surface Searing	●	●
Double Sided Grill Grates	●	
Grease Management System™	●	
Griddle Plate		●
Side Burners		●
One Step Direct Burner Ignition	●	●
304 Grade Stainless Steel	●	●
Stainless Steel Cover incl.	●	●
Total Power in BTU (NG)	50,000	46,000
U-Burner Power in BTU (NG)	2 x 25,000	1 x 12,000
Number of U-burners	2	1
Side Burner Power in BTU		2 x 17,000
Install Options		
Built-in	● (Optional insulated jacket BGB30-IJS (\$699)	● (Optional insulated jacket BGB30-IJS (\$699)
On Cart (to be ordered separately)	CSS-30 (\$799) / CAD1-30 (\$1,499)	CSS-30 (\$799) / CAD1-30 (\$1,499)
Cover Options (Purchased Separately)		
Built-in	BFG30-ACBI (\$129)	BFG30-ACBI (\$129)
On Cart	BFG30-VC (\$69)	BFG30-VC (\$69)
Gas Requirements		
1/2" NPT Male with a 3/8" Flare Adapter	●	●
LP Hose with Regulator and Type 1 Connector (LP only)	●	●
Warranty		
Limited Lifetime Warranty on Select Components*	●	●
Labor	Limited 2 years	Limited 2 years

SERIES 7 | SIDE BURNERS



MODEL no. (Natural / LP)	BGC131-BI-N / BGC131-BI-L	BGC132-BI-N / BGC132-BI-L
Price (UMRP)	\$699	\$999
SKU (Natural / LP)	71134 / 71135	71136 / 71137
Type of appliance	14" Series 7 Single Side Burner	14" Series 7 Double Side Burner
Product Dimensions	D: 16 1/16" x W: 14 9/16" x H: 10 5/8"	D: 26 5/8" x W: 14 9/16" x H: 10 5/8"
Cut-out Dimensions (proud installation)	D: 12" x W: 12" 1/8" x H: 10 1/8"	D: 22 3/4" x W: 12 1/8" x H: 10 1/8"
Features		
Built-in Installation	•	•
One Step Direct Burner Ignition	•	•
304 Grade Stainless Steel	•	•
Stainless Steel Cover incl.	•	•
Total Power in BTU	17,000	34,000
Side Burner Power in BTU	1 x 17,000	2 x 17,000
Install Options		
Built-in	•	•
Gas Requirements		
1/2" NPT Male with a 3/8" Flare Adapter	•	•
LP Hose with Regulator and Type 1 Connector (LP only)	•	•
Warranty	5 Year Limited warranty	5 Year Limited warranty

JOINING SOLUTIONS



MODEL no.	BND-CNR	CAD30-BB	WR24RTD
Price (UMRP)	\$269	\$479	\$529
SKU	70896	70860	70878
Type of appliance	Bend Corner Bracket	Brazilian Cherry Wood Back Bar BFGC/CAD30	Wrapper, Refrigerator, Beer Tap, Drawers
Description	Create extra counter space for your Freestanding Outdoor Kitchen with the Corner Bracket and Solid Surface. The Corner Solid Surface can be bought separately, otherwise specifications are included for a customized surface to match your countertop. Rated to hold 200lbs.	This back bar attaches to your cart to create a full 360 degrees of service around your cart model grill. Utilize this as a service area or additional preparation area.	Integrate the DCS Outdoor Refrigerator, Refrigerated Drawers or Beer Dispenser with the rest of your Freestanding Outdoor Kitchen with a DCS Wrapper. This creates additional preparation and serving space. The Wrapper Solid Surface can be bought separately, otherwise specifications are included for a customized surface to match your countertop.
Warranty	Limited 2 Years	Limited 2 Years	Limited 2 Years



MODEL no.	CAD-BEND	WR15I
Price (UMRP)	\$619	\$489
SKU	70895	70875
Type of appliance	Bend Unit	Wrapper for Ice Maker
Description	Bend Units offer the flexibility to design your Freestanding Outdoor Kitchen to fit your space. Ideal if space is minimal, two Bend Units will turn a straight line-up into a 90° corner format. Specifications are included for a customized surface to match your countertop.	Integrate the DCS Ice Maker with the rest of your Freestanding Outdoor Kitchen with a DCS Wrapper. This creates additional preparation and serving space. Specifications are included for a customized surface to match your countertop.
Warranty	Limited 2 Years	Limited 2 Years

FREESTANDING GRILL CARTS



MODEL no.	CAD1-48	CAD1-36
Price (UMRP)	\$2,399	\$1,999
SKU	71133	71132
Type of appliance	48" CAD Cart with Access Drawers	36" CAD Cart with Access Drawers
Product Dimensions (excluding handle)	D: 25 1/2" x W: 47 15/16" x H: 35 1/2"	D: 25 1/2" x W: 35 15/16" x H: 35 1/2"
Features		
Finish	304 Grade Stainless Steel	304 Grade Stainless Steel
Weather Resistant	•	•
Built-in Installation	•	•
Accessories Included		
Side Shelf Kit		
Optional Accessories		
Side Shelf Kit	CAD-SK (\$289)	CAD-SK (\$289)
Wastebasket Holder	WBH-ADRICAD (\$179)	WBH-ADRICAD (\$179)
Adjustable Leveling Feet to create a Stationary Cart	CAD-LVL (\$119)	CAD-LVL (\$119)
Tank Drawer Bottom Cover	TDBC-ADRICAD (\$89)	TDBC-ADRICAD (\$89)
Warranty	5 Year Limited warranty	5 Year Limited warranty



MODEL no.	CAD1-48E	CAD1-36E
Price (UMRP)	\$2,399	\$1,999
SKU	71408	71407
Type of appliance	48" Series 9 Grill CAD Cart with Access Drawers	36" Series 9 Grill CAD Cart with Access Drawers
Product Dimensions (excluding handle)	D: 25 1/2" x W: 47 15/16" x H: 35 1/2"	D: 25 1/2" x W: 47 15/16" x H: 35 1/2"
Features		
Finish	304 Grade Stainless Steel	304 Grade Stainless Steel
Weather Resistant	•	•
Built-in Installation	•	•
Accessories Included		
Side Shelf Kit		
Optional Accessories		
Side Shelf Kit	CAD-SK (\$289)	CAD-SK (\$289)
Wastebasket Holder	WBH-ADRICAD (\$179)	WBH-ADRICAD (\$179)
Adjustable Leveling Feet to create a Stationary Cart	CAD-LVL (\$119)	CAD-LVL (\$119)
Tank Drawer Bottom Cover	TDBC-ADRICAD (\$89)	TDBC-ADRICAD (\$89)
Warranty	5 Year Limited warranty	5 Year Limited warranty

FREESTANDING GRILL CARTS



MODEL no.	CAD1-30	CSS-30
Price (UMRP)	\$1,499	\$799
SKU	71131	71320
Type of appliance	30" CAD Cart with Access Drawers	30" CSS Cart with Single Door
Product Dimensions (excluding handle)	D: 25 1/2" x W: 30" x H: 35 1/2"	D: 25 1/2" x W: 30" x H: 35 3/4"
Features		
Finish	304 Grade Stainless Steel	304 Grade Stainless Steel
Weather Resistant	●	●
Built-in Installation	●	●
Accessories Included		
Side Shelf Kit		1
Optional Accessories		
Side Shelf Kit	CAD-SK	CSS-SK (\$99)
Back Bar	CAD-BB	
Wastebasket Holder	WBH-ADRICAD (\$179)	
Adjustable Leveling Feet to create a Stationary Cart	CAD-LVL (\$119)	
Tank Drawer Bottom Cover	TDBC-ADRICAD (\$89)	
Warranty	5 Year Limited warranty	5 Year Limited warranty

SIDE SHELVES, AND CART ACCESSORIES



MODEL no.	CAD1-SK	CSS-SK	CAD-LVL
Price (UMRP)	\$289	\$99	\$119
SKU	71189	71323	70862
Type of appliance	Side Shelf for CAD Cart	Side Shelf for CSS Cart	Leveling Legs for CAD Carts
Description	Attached to your Freestanding Cart, 24" heavy-duty, stainless steel side shelf kits offer a sturdy expansive workspace that folds down when not in use.	Attached to your Freestanding Cart, 20" heavy-duty stainless steel side shelf kits offer a sturdy expansive workspace that folds down when not in use.	The Leveling Legs turn your Freestanding Kitchen into a stationary kitchen.



MODEL no.	AP-CBB	AP-CBW
Price (UMRP)	\$49	\$249
SKU	71197	71321
Type of appliance	Bamboo Cutting Board / CAD Side Shelf Insert	Dark Walnut Cutting Board / CAD Side Shelf Insert
Description	A sturdy cutting board is an essential in the outdoor kitchen. DCS cutting boards are crafted from solid Bamboo, chosen for its quality and beauty. These boards are designed to convert your CAD Cart Side Shelf into a convenient cutting surface.	A sturdy cutting board is an essential in the outdoor kitchen. This DCS cutting board is crafted from solid Maple, chosen for its quality and beauty. The board is designed to convert your CAD Cart Side Shelf into a convenient cutting surface.

REFRIGERATION



MODEL no.	RF24RE3 / RF24LE3	RF24DE3
Price (UMRP)	\$2,599	\$3,899
SKU	71145 / 24483 (right hinge / left hinge)	71144
Type of appliance	24" Outdoor Refrigerator	24" Double Refrigerator Drawers
Product Dimensions	D: 23 23/32" (excluding handle) x W: 23 7/8" x H: 33 3/4 - 34 3/4"	D: 23 23/32" (excluding handle) x W: 23 7/8" x H: 33 3/4 - 34 3/4"
Cut-out Dimensions (proud installation)	D: 24" x W: 24" x H: 34 1/2"	D: 24" x W: 24" x H: 34 1/2"
Features		
Weather Resistant	•	•
304 Grade Stainless Steel	•	•
Capacity	6.1 cu ft	5.0 cu ft
Built-in or Freestanding	•	•
Outdoor Listed (CSA or UL)	•	•
Energy Star	•	•
Electrical Requirements	120V 60Hz	120V 60Hz
Warranty	5 Year Limited warranty	5 Year Limited warranty

REFRIGERATION ACCESSORIES



MODEL no.	RF15IR1 / RF15L1
Price (UMRP)	\$3,199
SKU	24806 / 24807 (right hinge / left hinge)
Type of appliance	15" Outdoor Clear Ice Maker
Product Dimensions	D: 21 1/2" (excluding handle) x W: 14 7/8" x H: 34 1/4"
Cut-out Dimensions (proud installation)	D: 24" x W: 15" x H: 34 1/2"
Features	
Weather Resistant	•
304 Grade Stainless Steel	•
Capacity	35lbs of clear & square ice per day
Built-in or Freestanding	•
Outdoor Listed (CSA or UL)	•
Energy Star	•
Electrical Requirements	120V 60Hz
Warranty	5 Year Limited warranty



MODEL no.	UC
Price (UMRP)	\$89
SKU	70446
Type of appliance	Caster Kit, Outdoor Refrigeration
Description	Caster kits allow the flexibility to make any of our outdoor refrigeration portable. If you love to host parties this is a great addition to any backyard. Bring the refreshments where you want them to be.

BEER DISPENSERS



MODEL no.	RF24TR1 / RF24TL1	RF24BTR1 / RF24BTL1
Price (UMRP)	\$3,299	\$3,499
SKU	71146 / 24479 (right hinge / left hinge)	24480 / 24481 (right hinge / left hinge)
Type of appliance	24" Outdoor Beer Dispenser - Single Tap	24" Outdoor Beer Dispenser - Dual Tap
Product Dimensions	D: 23 23/32" (excluding handle) x W: 23 7/8" x H: 33 3/4" - 34 3/4" (49 1/4" to top of tap handle)	D: 23 23/32" (excluding handle) x W: 23 7/8" x H: 33 3/4" - 34 3/4" (49 1/4" to top of tap handle)
Cut-out Dimensions (proud installation)	D: 24" x W: 24" x H: 34 1/2"	D: 24" x W: 24" x H: 34 1/2"
Features		
Weather Resistant	●	●
304 Grade Stainless Steel	●	●
Capacity	1/2 or 1/4 keg (5.7 cu ft)	1/2 or 1/4 or 2 x 1/6 kegs (5.7 cu ft)
Built-in or Freestanding	●	●
Outdoor Listed (CSA or UL)	●	●
Energy Star	●	●
Electrical Requirements	120V 60Hz	120V 60Hz
Warranty	5 Year Limited warranty	5 Year Limited warranty

BEVERAGE CHILLER AND ACCESSORY



MODEL no.	BC25	BC-BTTLEAC-25
Price (UMRP)	\$1,149	\$249
SKU	71034	71036
Type of appliance	25" Beverage Chiller/Sink	Beverage Chiller Accessory
Product Dimensions (including lid)	D: 21 15/16" x W: 26 3/8" x H: 12 1/16"	D: 6 5/8" x W: 21 1/16" x H: 10 3/8"
Features		
Finish	304 Grade Stainless Steel	304 Grade Stainless Steel
Weather Resistant	●	●
Built-in Installation	●	●
Capacity	17gal	1L bottles
Install Dimensions		
Cutout Width	24 3/16"	
Cutout Depth	21 1/16"	
Accessories		
Condiment Storage Containers	4	
Lid	●	
Warranty	5 Year Limited warranty	5 Year Limited warranty

ACCESS DRAWERS



MODEL no.	ADR2-48	ADR2-36
Price (UMRP)	\$1,799	\$1,499
SKU	71147	71148
Type of appliance	48" Access Drawers	36" Access Drawers
Product Dimensions (excluding handle)	D: 25 1/2" x W: 47 15/16" x H: 21 7/8"	D: 25 1/2" x W: 35 15/16" x H: 21 7/8"
Features		
Finish	304 Grade Stainless Steel	304 Grade Stainless Steel
Weather Resistant	●	●
Built-in Installation	●	●
Install Dimensions (Proud)		
Cutout Height (proud installation)	20"	20"
Cutout Width (proud installation)	46"	34"
Cutout Depth (proud installation)	24" min.	24" min.
Product Dimensions (Flush)		
Cutout Height (flush installation)	22 1/16"	22 1/16"
Cutout Width (flush installation)	48 3/16"	36 3/16"
Cutout Depth (flush installation)	26" min.	26" min.
Warranty	Limited 2 Years Parts & Labor	Limited 2 Years Parts & Labor

ACCESS DRAWERS



MODEL no.	ADR2-30	ADR2-24
Price (UMRP)	\$1,199	\$899
SKU	71149	71150
Type of appliance	30" Access Drawers	24" Access Drawers
Product Dimensions (excluding handle)	D: 25 1/2" x W: 30" x H: 21 7/8"	D: 25 1/2" x W: 24" x H: 21 7/8"
Features		
Finish	304 Grade Stainless Steel	304 Grade Stainless Steel
Weather Resistant	●	●
Built-in Installation	●	●
Install Dimensions (Proud)		
Cutout Height (proud installation)	20"	20"
Cutout Width (proud installation)	28"	22"
Cutout Depth (proud installation)	24" min.	24" min.
Product Dimensions (Flush)		
Cutout Height (flush installation)	22 1/16"	22 1/16"
Cutout Width (flush installation)	30 3/16"	24 3/16"
Cutout Depth (flush installation)	26" min.	26" min.
Warranty	Limited 2 Years Parts & Labor	Limited 2 Years Parts & Labor

ACCESS DOORS



MODEL no.	ADNI-20X48	ADNI-20X36
Price (UMRP)	\$649	\$549
SKU	71151	71152
Type of appliance	48" Access Doors	36" Access Doors
Product Dimensions (excluding handle)	D: 6 1/4" x W: 47 15/16" x H: 21 7/8"	D: 6 1/4" x W: 35 15/16" x H: 21 7/8"
Features		
Finish	304 Grade Stainless Steel	304 Grade Stainless Steel
Weather Resistant	●	●
Built-in Installation	●	●
Install Dimensions (Proud)		
Cutout Height (proud installation)	20"	20"
Cutout Width (proud installation)	46"	34"
Product Dimensions (Flush)		
Cutout Height (flush installation)	22 1/16"	22 1/16"
Cutout Width (flush installation)	48 3/16"	36 3/16"
Warranty	Limited 2 Years Parts & Labor	Limited 2 Years Parts & Labor

ACCESS DOORS



MODEL no.	ADN1-20X30	ADN1-20X24
Price (UMRP)	\$499	\$449
SKU	71153	71154
Type of appliance	30" Access Doors	24" Access Door
Product Dimensions (excluding handle)	D: 6 1/4" x W: 30" x H: 21 7/8"	D: 6 1/4" x W: 24" x H: 21 7/8"
Features		
Finish	304 Grade Stainless Steel	304 Grade Stainless Steel
Weather Resistant	●	●
Built-in Installation	●	●
Install Dimensions (Proud)		
Cutout Height (proud installation)	20"	20"
Cutout Width (proud installation)	28"	22"
Product Dimensions (Flush)		
Cutout Height (flush installation)	22 1/16"	22 1/16"
Cutout Width (flush installation)	30 3/16"	24 3/16"
Warranty	Limited 2 Years Parts & Labor	Limited 2 Years Parts & Labor

TOWER DRAWERS



MODEL no.	TDT1-20	TDD1-20
Price (UMRP)	\$1,349	\$1,049
SKU	71157	71156
Type of appliance	20" Tower Drawer Triple	20" Tower Drawer Double
Product Dimensions (excluding handle)	D: 25" x W: 20 5/16" x H: 29 1/8"	D: 25" x W: 20 5/16" x H: 21 7/8"
Features		
Finish	304 Grade Stainless Steel	304 Grade Stainless Steel
Weather Resistant	•	•
Built-in Installation	•	•
Install Dimensions (Proud)		
Cutout Height (proud installation)	28"	20 11/16"
Cutout Width (proud installation)	18 7/8"	18 7/8"
Cutout Depth (proud installation)	24" min.	24" min.
Product Dimensions (Flush)		
Cutout Height (flush installation)	29 5/16"	22 1/16"
Cutout Width (flush installation)	20 1/2"	20 1/2"
Cutout Depth (flush installation)	26" min.	26" min.
Warranty	Limited 2 Years Parts & Labor	Limited 2 Years Parts & Labor

TOWER DRAWERS



MODEL no.	TDS1-20
Price (UMRP)	\$749
SKU	71155
Type of appliance	20" Tower Drawer Single
Product Dimensions (excluding handle)	D: 25" x W: 20 5/16" x H: 9 5/8"
Features	
Finish	304 Grade Stainless Steel
Weather Resistant	•
Built-in Installation	•
Install Dimensions (Proud)	
Cutout Height (proud installation)	8 7/16"
Cutout Width (proud installation)	18 7/8"
Cutout Depth (proud installation)	24" min.
Product Dimensions (Flush)	
Cutout Height (flush installation)	9 13/16"
Cutout Width (flush installation)	20 1/2"
Cutout Depth (flush installation)	26" min.
Warranty	Limited 2 Years Parts & Labor

TRASH BIN



MODEL no.	TB1-20
Price (UMRP)	\$899
SKU	71158
Type of appliance	20" Double Trash/ Recycle Bin
Product Dimensions (excluding handle)	D: 25" x W: 20 5/16" x H: 29 1/8"
Features	
Finish	304 Grade Stainless Steel
Weather Resistant	●
Built-in Installation	●
Install Dimensions (Proud)	
Cutout Height (proud installation)	28"
Cutout Width (proud installation)	18 7/8"
Cutout Depth (proud installation)	24" min.
Product Dimensions (Flush)	
Cutout Height (flush installation)	29 5/16"
Cutout Width (flush installation)	20 1/2"
Cutout Depth (flush installation)	26" min.
Accessories	
Trash Bins Included	2
Size Trash Bins	10gal
Warranty	Limited 2 Years Parts & Labor

DRY PANTRY



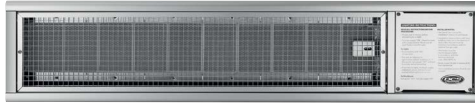
MODEL no.	DP1-42
Price (UMRP)	\$2,499
SKU	71159
Type of appliance	42" Dry Pantry
Product Dimensions (excluding handle)	D: 25 11/16" x W: 42" x H: 30 1/2"
Features	
Finish	304 Grade Stainless Steel
Weather Resistant	●
Built-in Installation	●
Internal Drawer Height	3 11/16"
Internal Drawer Width	11 7/8"
Internal Drawer Depth	19 3/8"
Internal Wire Shelf Width	19 7/8"
Internal Wire Shelf Depth	21 7/8"
Storage Capacity LH	5 cu ft
Storage Capacity RH	7 cu ft
Storage Bin Height	4"
Install Dimensions (Proud)	
Cutout Height (proud installation)	29 3/16"
Cutout Width (proud installation)	40 7/16"
Cutout Depth (proud installation)	24 11/16" min.
Product Dimensions (Flush)	
Cutout Height (flush installation)	30 11/16"
Cutout Width (flush installation)	33 1/2"
Cutout Depth (flush installation)	42 3/16"
Accessories	
Removable Storage Bins	3
Heavy Gauge Wire Shelves	2
Warranty	Limited 2 Years Parts & Labor

OUTDOOR WARMING DRAWER



MODEL no.	WD1-30-SSOD
Price (UMRP)	\$1,599
SKU	71142
Type of appliance	30" Outdoor Warming Drawer
Product Dimensions (excluding handle)	D: 26 1/8" x W: 30" x H: 16"
Features	
Finish	304 Grade Stainless Steel
Weather Resistant	●
Built-in Installation	●
Install Dimensions (Proud)	
Cutout Height (proud installation)	14 7/16"
Cutout Width (proud installation)	28 3/8"
Cutout Depth (proud installation)	24 3/16"
Product Dimensions (Flush)	
Cutout Height (flush installation)	16 3/8"
Cutout Width (flush installation)	30 3/16"
Cutout Depth (flush installation)	26 3/16"
Accessories	
Removable Storage Bins	●
Control	Thermostatically Controlled
Low Setting	140° - 170°F
Medium Setting	170° - 200°F
High Setting	200° - 230°F
Electrical Requirements	120V 60Hz
Warranty	5 Year Limited warranty

BUILT-IN PATIO HEATER



MODEL no.	DRH-48N
Price (UMRP)	\$1,499
SKU	70034
Type of appliance	Built-in Patio Heater
Product Dimensions (excluding handle)	D: 7 3/4" x W: 48" x H: 10 1/4"
Features	
Finish	304 Grade Stainless Steel
Weather Resistant	●
BTU Rating	56,000 BTU
Accessories	
Optional Remote Control	DRH-RMT
Optional Remote Control SKU	70797
Optional Remote Control PRICE (USD)^	\$189.00
Gas Requirements	Max. Pressure: 1/2 psig, Min. Pressure: 6" W.C. Manifold Pressure: 5" W.C. Internal 5" W.C. Regulator
Electrical Requirements	120V 60Hz
Warranty	5 Year Limited warranty



MODEL no.	DRH-RMT
Price (UMRP)	\$189
SKU	70797
Type of appliance	On-Off Remote Control for DRH-48

INSULATED JACKETS



MODEL no.	BGA54-IJS	BGA48-IJS
Price (UMRP)	\$899	\$849
SKU	71334	70172
Type of appliance	54" Insulated Jacket	48" Insulated Jacket
Product Dimensions	D: 23 3/4" x W: 59 7/8" x H: 11 1/8"	D: 23 3/4" x W: 51 1/2" x H: 11 1/8"
Cutout Dimensions	D: 23 3/4" x W: 60" x H: 11 1/8"	D: 23 3/4" x W: 51 5/8" x H: 11 1/8"
Approx. Shipping Weight	79lbs (estimate, product only excluding packaging)	106lbs
Features		
Finish	304 Grade Stainless Steel	304 Grade Stainless Steel
Weather Resistant	●	●
Warranty	Limited 2 Years Parts & Labor	Limited 2 Years Parts & Labor



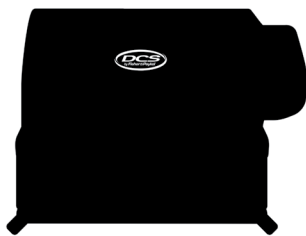
MODEL no.	BGA42-IJS	BGA36-IJS	BGB30-IJS
Price (UMRP)	\$819	\$799	\$699
SKU	71335	70167	70859
Type of appliance	42" Insulated Jacket	36" Insulated Jacket	30" Insulated Jacket
Product Dimensions	D: 23 3/4" x W: 47 13/16" x H: 11 1/8"	D: 23 3/4" x W: 40 3/8" x H: 11 1/8"	D: 23 3/4" x W: 34 5/8" x H: 11 1/8"
Cutout Dimensions	D: 23 3/4" x W: 48" x H: 11 1/8"	D: 23 3/4" x W: 40 1/2" x H: 11 1/8"	D: 23 3/4" x W: 34 7/8" x H: 11 1/8"
Approx. Shipping Weight	66lbs (estimate, product only excluding packaging)	75lbs	53lbs
Features			
Finish	304 Grade Stainless Steel	304 Grade Stainless Steel	304 Grade Stainless Steel
Weather Resistant	●	●	●
Warranty	Limited 2 Years Parts & Labor	Limited 2 Years Parts & Labor	Limited 2 Years Parts & Labor

STORAGE UNITS

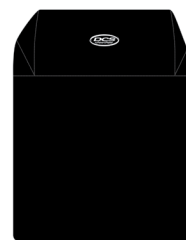
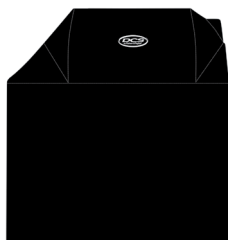


MODEL no.	ASE6-48 / ASE6-36	ASH6-48 / ASH6-36
Price (UMRP)	\$299	\$299
SKU	71405 / 71332 (48" / 36")	71406 / 71333 (48" / 36")
Type of appliance	6" Series 9 Accessory Storage Unit	6" Series 7 Accessory Storage Unit
Product Dimensions (excluding handle)	D: 26 7/8" x W: 7 11/16" x H: 11 13/64"	D: 26 7/8" x W: 7 3/8" x H: 11 13/64"
Features		
Finish	304 Grade Stainless Steel	304 Grade Stainless Steel
Weather Resistant	●	●
Built-in Installation	●	●
Install Dimensions (Proud)	54" size	54" size
Cutout Height (proud installation)	10 1/8"	10 1/8"
Cutout Width (proud installation)	52 1/8"	40 1/2"
Cutout Depth (proud installation)	22 3/4" min.	22 3/4" min.
Warranty	Limited 2 Years Parts & Labor	Limited 2 Years Parts & Labor

GRILL COVERS



MODEL no.	ACBI-30	BFG30-ACBI
Price (UMRP)	\$119	\$129
SKU	71184	71188
Type of appliance	30" Series 7 Built-In Grill Cover	30" Series 7 Built-In Grill Cover
Features		
Finish	PVC, 400 Denier Polyester	PVC, 400 Denier Polyester
Fits DCS Grill	BH1-30R-N, BH1-30R-L	BFGC-30G-N, BFGC-30G-L
Waterproof	•	•
Double Layer Construction	•	•
Level 4 UV Protection	•	•
Anti-Cold-Crack	•	•
Innerflow Section	•	•

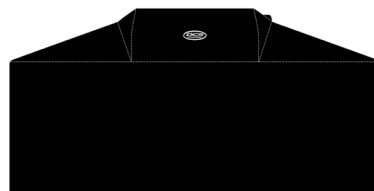


MODEL no.	ACC-30SB	ACC-30
Price (UMRP)	\$169	\$169
SKU	71200	71178
Type of appliance	30" Series 7 Grill On-Cart Cover with side burner	30" Series 7 Grill On-Cart Cover
Features		
Finish	PVC, 400 Denier Polyester	PVC, 400 Denier Polyester
Fits DCS Grill	BGC30-BQ-N, BGC30-BQ-L	BH1-30R-N, BH1-30R-L
Waterproof	•	•
Double Layer Construction	•	•
Level 4 UV Protection	•	•
Anti-Cold-Crack	•	•
Innerflow Section	•	•

GRILL COVERS

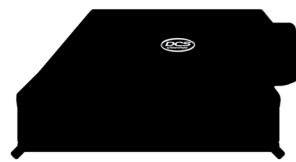


MODEL no.	ACBI-36	ACC-36
Price (UMRP)	\$129	\$199
SKU	71185	71179
Type of appliance	36" Series 7 Built-in Grill Cover	36" Series 7 Grill On-Cart Cover
Features		
Finish	PVC, 400 Denier Polyester	PVC, 400 Denier Polyester
Fits DCS Grill	BH1-36R-N, BH1-36R-L	BH1-36R-N, BH1-36R-L
Waterproof	•	•
Double Layer Construction	•	•
Level 4 UV Protection	•	•
Anti-Cold-Crack	•	•
Innerflow Section	•	•

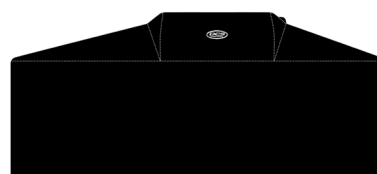


MODEL no.	ACBI-36E	ACC-36E
Price (UMRP)	\$129	\$199
SKU	71404	71340
Type of appliance	36" Series 9 Built-In Grill Cover	36" Series 9 Grill-On Cover
Features		
Finish	PVC, 400 Denier Polyester	PVC, 400 Denier Polyester
Fits DCS Grill	BE1-36RC-L, BE1-36RC-N	BE1-36RC-L, BE1-36RC-N
Waterproof	•	•
Double Layer Construction	•	•
Level 4 UV Protection	•	•
Anti-Cold-Crack	•	•
Innerflow Section	•	•

GRILL COVERS



MODEL no.	ACBI-48	ACBI-48SB
Price (UMRP)	\$159	\$159
SKU	71187	71186
Type of appliance	48" Series 7 Built-in Grill Cover	48" Series 7 Built-in Grill Cover
Features		
Finish	PVC, 400 Denier Polyester	PVC, 400 Denier Polyester
Fits DCS Grill	BH1-48R-N, BH1-48R-L	BH1-48RS-N, BH1-48RS-L
Waterproof	●	●
Double Layer Construction	●	●
Level 4 UV Protection	●	●
Anti-Cold-Crack	●	●
Innerflow Section	●	●



MODEL no.	ACC-48	ACC-48SB
Price (UMRP)	\$239	\$219
SKU	71180	71181
Type of appliance	48" Series 7 Grill On-Cart Cover	48" Series 7 Grill On-Cart Cover
Features		
Finish	PVC, 400 Denier Polyester	PVC, 400 Denier Polyester
Fits DCS Grill	BH1-48R-N, BH1-48R-L	BH1-48RS-N, BH1-48RS-L
Waterproof	●	●
Double Layer Construction	●	●
Level 4 UV Protection	●	●
Anti-Cold-Crack	●	●
Innerflow Section	●	●

GRILL COVERS



MODEL no.	ACBI-48E	ACC-48E
Price (UMRP)	\$159	\$239
SKU	71339	71341
Type of appliance	48" Series 9 Built-In Grill Cover	48" Series 9 Grill-On Cover
Features		
Finish	PVC, 400 Denier Polyester	PVC, 400 Denier Polyester
Fits DCS Grill	BE1-48RC-L, BE1-48RC-N	BE1-48RC-L, BE1-48RC-N
Waterproof	●	●
Double Layer Construction	●	●
Level 4 UV Protection	●	●
Anti-Cold-Crack	●	●
Innerflow Section	●	●

ACCESSORIES

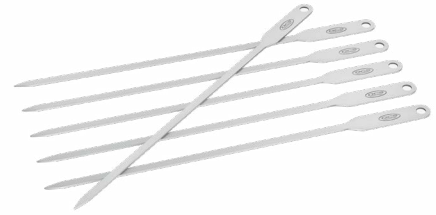


MODEL no.	AA-HS	AA-DB
Price (UMRP)	\$99	\$99
SKU	71190	71168
Type of appliance	DCS Apron - Hickory Stripe	DCS Apron - Duck Brown
Description	A necessity for any serious griller, this DCS apron is generously sized and features a front storage pocket and adjustable neck band. Made in America from 100% Vintage Cotton Hickory Stripe and handfinished with brass fittings.	A necessity for any serious griller, this DCS apron is generously sized and features a front storage pocket and adjustable neck band. Made from 100% Vintage Cotton Duck Brown and handfinished with brass fittings.



MODEL no.	ATS-CK3	AT-SPT	AT-TNG
Price (UMRP)	\$79	\$29	\$29
SKU	71202	71172	71173
Type of appliance	DCS Cook Tool Set (3 Piece)	DCS Grill Spatula	DCS Grill Tongs
Description	The DCS Cook Tools set features high grade stainless steel spatula, tongs and fork all with walnut handles and brass rivet detailing. Generously sized and perfectly weighted, DCS grill tools feel as good in your hand as they look.	The DCS Grill Spatula is crafted from high grade stainless steel with a walnut handle and brass rivet detailing. Generously sized and perfectly weighted, DCS grill tools feel as good in your hand as they look.	DCS Grill Tongs are crafted from high grade stainless steel with a walnut handle and brass rivet detailing. Generously sized and perfectly weighted, DCS grill tools feel as good in your hand as they look.

ACCESSORIES



MODEL no.	AT-MLT	ATS-SK6
Price (UMRP)	\$10	\$20
SKU	71336	71191
Type of appliance	Grease Management Grilling Multi-tool	DCS Grill Skewer Set
Description	Use the DCS Grill Multi-tool for easily lifting, moving hot greasy grates and scraping out the grease management system trough. Crafted from stainless steel and hand-finished with a walnut handle and brass rivet detailing, it is the perfect companion for your powerful grill.	DCS Skewers are an essential for the Grill Chef. Available in packs of six, these solid stainless steel skewers are robust and easy to clean.



MODEL no.	BGC-IR	BGC-GP
Price (UMRP)	\$299	\$299
SKU	71409	71410
Type of appliance	Hybrid Infrared Burner	Grill Griddle Plate
Description	The DCS Infrared Hybrid Burner delivers rapid heat-up with precise control of the heat turn-down, allowing great flexibility with what foods you are able to cook on the grill. The infrared burner also provides traditional sear lines on food, for the authentic grill experience.	Made of commercial quality plated stainless steel that insures a level cooking surface and even heat distribution, the DCS Grill Griddle Plate allows you to cook delicate items on your Grill with ease.

ACCESSORIES



MODEL no.	RFIDP	QDHKM30 1/2"
Price (UMRP)	\$499	\$179
SKU	70965	70676
Type of appliance	Ice Maker Drain Pump	Quick Disconnect Hose
Description	For use with the RF151 Ice Maker if gravity drain cannot be utilized.	Includes 12" flexible gas hose, 1/2" male quick-disconnect on one end and 1/2" female flare swivel on the other. CSA certified for Natural or LP gas.



MODEL no.	TDBC-ADR1CAD	WBH-ADR1CAD
Price (UMRP)	\$89	\$179
SKU	70907	70906
Type of appliance	Tank Drawer (Bottom Cover)	Waste Basket Holder
Description	For use with your Access Drawers or CAD Carts. The Tank Drawer Bottom Cover can convert your propane drawer into a deep storage drawer or a trash bin when used in conjunction with the Waste Basket Holder.	In conjunction with the Tank Drawer Bottom Cover, you can convert your LP Tank Drawer into a convenient trash / recycle drawer. Bins are included with kit. For use with your Access Drawers or CAD Carts.

ACCESSORIES



MODEL no.	CW-20	DCS-WRGS
Price (UMRP)	\$199	\$39
SKU	70496	70403
Type of appliance	Commercial Wok	Wok Ring
Description	A versatile accessory for both indoor and outdoor kitchens, this commercial-style stainless steel wok features a traditional rounded bottom, and a lightweight aluminum lid. A hardwood lid handle helps maintain safe-to-touch temperatures so you can safely remove and replace the lid while cooking. (Wok Ring is required for use).	Wok ring attachment for side burner.