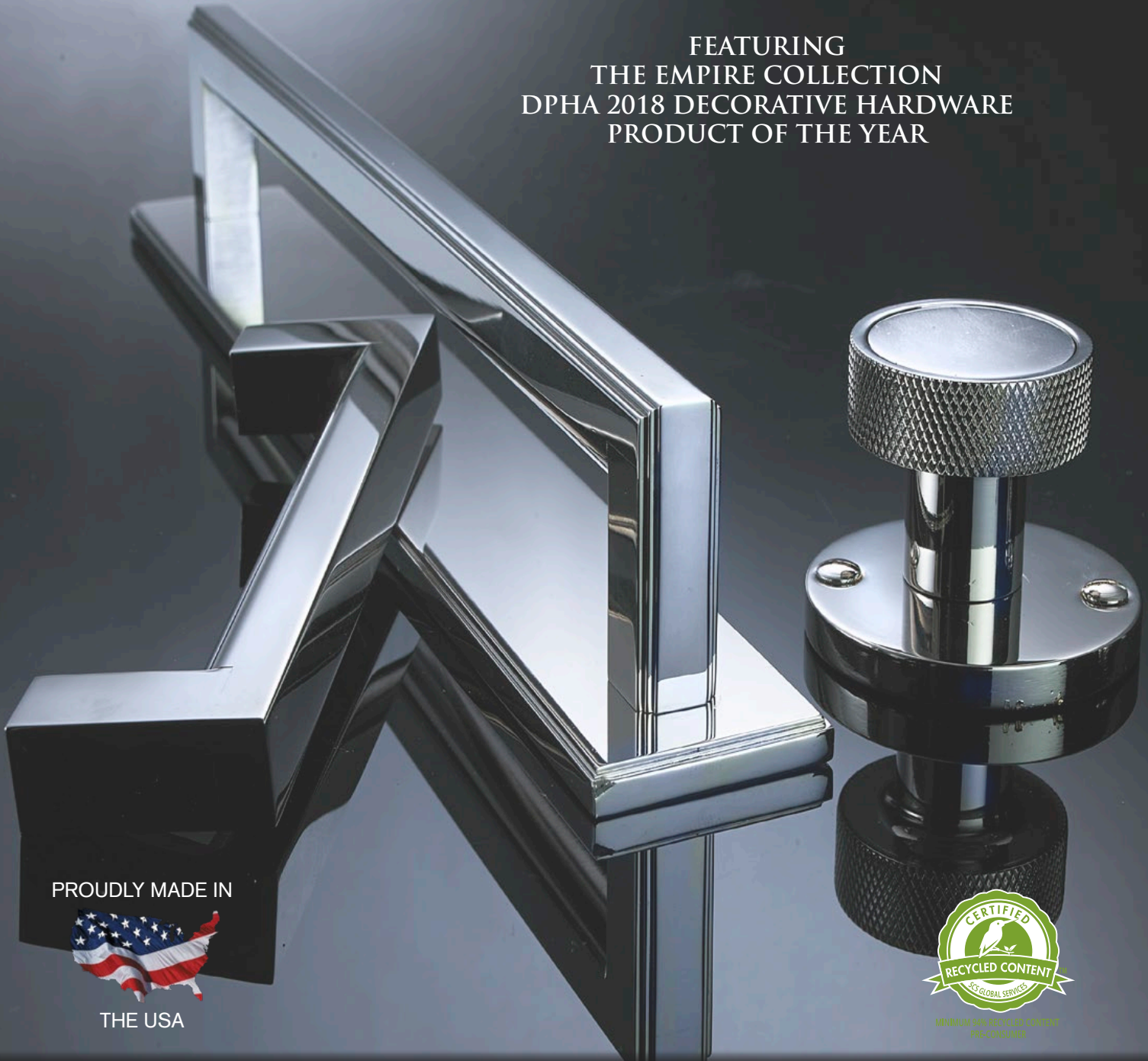


# THE BRONZE



FEATURING  
THE EMPIRE COLLECTION  
DPHA 2018 DECORATIVE HARDWARE  
PRODUCT OF THE YEAR



PROUDLY MADE IN



THE USA



MINIMUM 50% RECYCLED CONTENT  
PRE-CONSUMER

## 2018 PRODUCT UPDATE

# NEW ITEMS - 2018

Item Number	Diameter	C-C	Proj	OA
320	9/16 hex	NA	1 3/16	2
321-3H	9/16 hex	3 1/2	1 3/16	4 1/2
321-4	9/16 hex	4	1 3/16	6
322-6	3/4 hex	6	1 1/2	8
323-10	1 hex	10	2 3/16	12
323-12	1 hex	12	2 3/16	14
591	1 1/4 round	NA	1	NA
592	1 3/4 round	NA	3/16	NA
595	1 1/4 round	NA	1	NA
620	1 round	NA	1 3/16	NA
621	1 1/4 round	NA	1 3/16	NA
622	1 1/2 round	NA	1 3/16	NA
623	1 square	NA	1 3/16	NA
624	1 1/4 square	NA	1 3/16	NA
625	1 1/2 square	NA	1 3/16	NA
626	1 hex	NA	1 3/16	NA
627	1 1/4 hex	NA	1 3/16	NA
628	1 1/2 hex	NA	1 3/16	NA
9420	1 x 3	1	1/8	3
9425	1 x 3 1/2	1 1/2	1/8	3 1/2
9435	1 x 4 1/2	3	1/8	4 1/2
9445	1 x 5 1/2	3 1/2	1/8	5 1/2
9455	1 x 6 1/2	3 1/2	1/8	6 1/2



320  
2" hex knob



591  
1 1/4" Right Hand  
Knurled Knob



595 with 592 backplate  
with  
decorative slotted  
screws



620-622  
Shown: 621 Round  
Empire knob with 9621  
Empire backplate



321-323\*  
9/16", 3/4" and 1" hex pulls



435 with 9435 offset backplate  
(420-455 with 9420-9455 available)



623-625  
Shown: 624 Square  
Empire knob with 9624  
Empire backplate



626-628  
Shown: 627 Hex  
Empire knob with 9627  
Empire backplate

\* Denotes custom sizes available

# NEW ITEMS - 2018



REMARKABLE DETAIL

Item Number	Diameter	C-C	Proj	OA
632	1 1/4 round	NA	1	NA
633	1 1/2 round	NA	1 3/8	NA
636	1 1/4 round	NA	1 1/2	NA
637	1 1/2 round	NA	2	NA
700-1H	1 3/4 x 3/4 x 3/32	1 1/2	1 3/4	2
700-3	1 3/4 x 3/4 x 3/32	3	1 3/4	4
700-5	1 3/4 x 3/4 x 3/32	5	1 3/4	6
940	3/8 x 3/4	NA	1 1/8	2
941-4	3/8 x 3/4	4	1 1/8	6
941-6	3/8 x 3/4	6	1 1/8	8



632 (1 1/4" Knob) with 9621 backplate (Empire 1 1/2")



633 (1 1/2" Knob)



636 (1 1/4" Knob) with 9621 Empire backplate



637 (1 1/2" Knob)



MINIMUM 94% RECYCLED CONTENT  
PRE-CONSUMER

Environmentally  
Responsible  
Manufacturing

PROUDLY MADE IN THE



**USA**

American  
Craftsmanship



700\* Series J-Lip pulls



940 Empire Knob



941\* Empire Pull

\* Denotes custom sizes available

# NEW ITEMS - 2018

Item Number	Diameter	C-C	Proj	OA
945-6	7/16 square	6	1 3/16	6 7/16
945-8	7/16 square	8	1 3/16	8 7/16
9620	1 1/4 round	NA	3/16	NA
9621	1 1/2 round	NA	3/16	NA
9622	1 3/4 round	NA	3/16	NA
9623	1 1/4 square	NA	3/16	NA
9624	1 1/2 square	NA	3/16	NA
9625	1 3/4 square	NA	3/16	NA
9626	1 1/4 hex	NA	3/16	NA
9627	1 1/2 hex	NA	3/16	NA
9628	1 3/4 hex	NA	3/16	NA
9945	1 square	NA	3/16	NA
9948-6	1 1/4 x 7	6	3/16	7



945\* pull with 9948\*  
Empire backplate



945\* pull with 9945\* 1" square  
Empire backplate



9620-9622  
Empire backplate



9623-9625  
Empire backplate



9626-9628  
Empire backplate

\* Denotes custom sizes available

# NEW ITEMS - 2018



Item Number	Type of Detail	Diameter	C-C	Proj	OA
9844-8	Flat	1 1/2 x 9	8	3/16	9
9944-8	Empire	1 1/2 x 9	8	3/16	9
9945	Empire	1 square	NA	3/16	NA
9946-4	Flat	1 x 5	4	3/16	5
9946-6	Flat	1 x 7	6	3/16	7
9946-8	Flat	1 x 9	8	3/16	9
9947-4	Flat w/ screws	1 x 6	4	3/16	6
9947-6	Flat w/ screws	1 x 8	6	3/16	8
9947-8	Flat w/ screws	1 x 10	8	3/16	10
9948-4	Empire	1 1/4 x 5	4	3/16	5
9948-6	Empire	1 1/4 x 7	6	3/16	7
9948-8	Empire	1 1/4 x 9	8	3/16	9
9949-4	Empire w/ screws	1 1/4 x 6	4	3/16	6
9949-6	Empire w/ screws	1 1/4 x 8	6	3/16	8
9949-8	Empire w/ screws	1 1/4 x 10	8	3/16	10
9950	Flat	1 square	NA	1/8	NA
9951	Flat	1 1/4 square	NA	1/8	NA
9952	Flat	1 1/2 square	NA	1/8	NA
9953	Flat	1 3/4 square	NA	1/8	NA



9945 1" square  
Empire backplate



9946\* 1 1/4" Flat backplate  
(9844\* Backplate version is 1 1/2" wide)



9948\* 1 1/4" Empire backplate  
(9944\* backplate version is 1 1/2" wide)



9947\* flat backplate  
with exposed screws



9950-9953 square  
flat backplates



9949\* Empire backplate  
with exposed screws

\* Denotes custom sizes available

# STYLE ADDITIONS TO EXISTING ITEMS - 2018

At THE BRONZE, we are continually looking for ways to make our products better. The items shown below are new items we have added to the existing line that represent gentle tweaks that we feel result in a significant difference in appearance.

We are also adding to the line several different designs that our customers have repeatedly asked us to make



\* Denotes custom sizes available

# STYLE ADDITIONS TO EXISTING ITEMS - 2018

Whether you want a sleeker or more stylish appearance, we offer your customers customization abilities that no one else can provide.



New 290 with contoured leg



Existing 540 with straight leg



New 293 and 295 with contoured leg

Existing 241 and 341 series with straight leg



New 292 and 294 series with contoured leg

Existing 240 and 340 series with straight leg



New 291 with contoured leg



Existing 541 with straight leg

PROUDLY MADE IN THE



USA



New 571

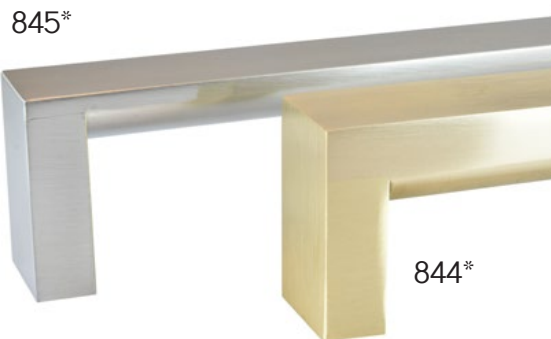


New 570

## INTRODUCING A NEW ERGONOMIC APPLIANCE HANDLE

Our new 844 handle has an ergonomically satisfying rounded back that more closely echoes the feel and look of our 745 handle.

For comparison, the differences between the existing 845 and new 844 are highlighted below.



Backplates are available for both 845 and 844



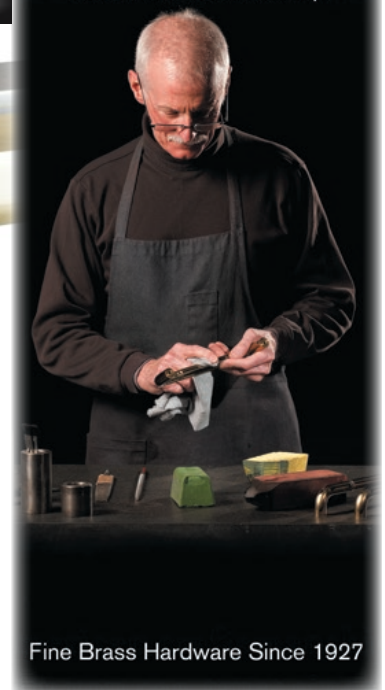
845 appliance pull profile



844 appliance pull profile

\* Denotes custom sizes available

Three generations of American Craftsmanship



Fine Brass Hardware Since 1927

# NEW FINISHES - 2018

Item Number	Diameter	C-C	Proj	OA
1307-4	1/2 round	4	1 5/16	5 1/2
1308-6	5/8 round	6	1 1/2	7 1/2
1309-8	3/4 round	8	1 7/8	10
1310-10	1 round	10	2	12
1346-6	3/4 round	6	1 5/8	7
1347-4	5/8 round	4	1 1/4	5
1347-6	5/8 round	6	1 1/4	7
1442-8	1 round	8	2 1/8	9 1/2
1446-8	3/4 round	8	1 5/8	9
1447-5	5/8 round	5	1 1/4	6
1447-6	5/8 round	6	1 1/4	7
1447-7	5/8 round	7	1 1/4	8
1448-6	1/2 round	6	1 3/16	6 3/4



## FROST FINISHES

AVAILABLE ON  
EVERY ITEM



1442\*, 1446-1448\*  
Shown in Frost Brass with  
Polished Brass Accents



1342\*, 1346\*, 1347\*  
Shown in Frost Chrome with  
Polished Chrome Accents

1307-1310\*  
Shown in Frost Chrome with  
Polished Chrome Accents



1442\*, 1446-1448\*  
Shown in Frost Nickel with  
Polished Nickel Accents

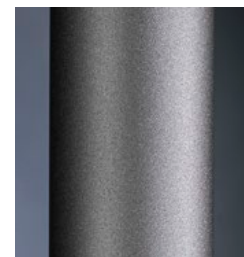
1307-1310\*  
Shown in Frost Nickel with  
Polished Nickel Accents



**Frost Brass-4F**



**Frost Chrome-26F**



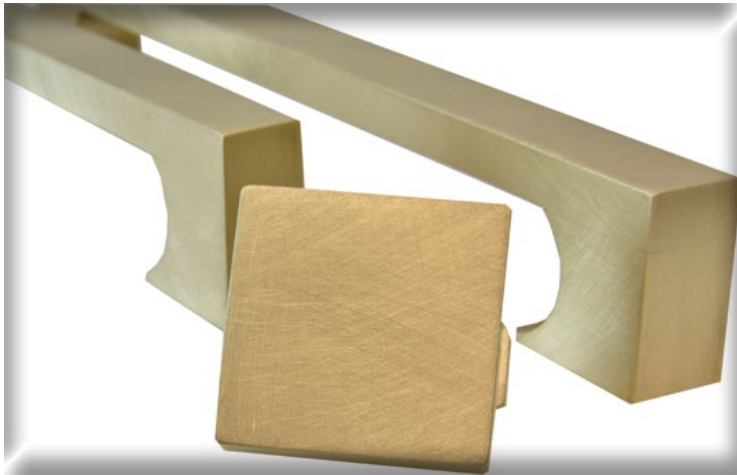
**Frost Nickel-15F**

All Frost Finishes  
are Tier 3 pricing

\* Denotes custom sizes available

AVAILABLE IN EVERY ITEM

# WEATHERED BRASS



Finish Code: WB

Note: Waxed finishes are not covered by the Finishes for Life Guarantee

Hand-burnished, oxidized and waxed

# NEW EMPIRE APPLIANCE PULL - 2018



Remarkable Detail of 944

For more than 90 years, we have dedicated our efforts to give our customers the highest quality, hand finished hardware available anywhere.



944\* Empire Appliance Handle

9944 Stepped Backplate available for the 944 handle

\* Denotes custom sizes available

# NEW TANNERS ITEMS - 2018

Item Number	Diameter	C-C	Proj	OA
L111	1 1/4 round	NA	1 3/16	NA
L112	1 1/2 round	NA	1 3/16	NA
L121	1 1/4 square	NA	1 3/16	NA
L122	1 1/2 square	NA	1 3/16	NA
L244-20	1 1/4 round	20	2 7/16	24
L460-2	NA	2	3/4	3
L460-4	NA	4	3/4	5
L911	1 1/2 round	NA	1/4	NA
L912	1 3/4 round	NA	1/4	NA
L921	1 1/2 square	NA	1/4	NA
L922	1 3/4 square	NA	1/4	NA



LUXURIOUS LEATHER



L111, L112  
L111 shown with L911 Backplate in Luv-a-Bull Darkest Blue Leather (50)



L460-4\*  
Shown in Worn Cappuccino Leather (48)

L460-2\*  
Shown in Royal Hide Mineral Leather (52)



L121, L122  
L121 shown with L921 Backplate in Sulky Pitch Brown Leather (41)



L244\* series  
Shown with Woven Fudge Leather (16)

\* Denotes custom sizes available

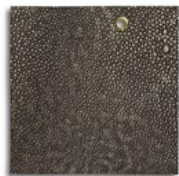
## OUR NEWEST LEATHER COLORS



Shagreen Ink 43 (SH37)



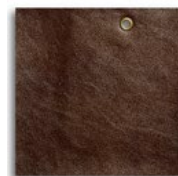
Shagreen White 44 (SH17)



Shagreen Caviar 45 (SH04)



Woven Cherry Royale 46 (WVN04)



Pinseal Pitch Brown 47 (PNS06)

# NEW TANNERS ITEMS - 2018



SUMPTUOUS TEXTURES

Item Number	Diameter	C-C	Proj	OA
L535-4	1/2 round	4	1 1/4	5 1/2
L536-6	5/8 round	6	1 5/8	8
L537-8	3/4 round	8	2	10 1/4
L538-8	1 round	8	2 1/4	11
L709	NA	2	1 5/8	2 1/2
L710	NA	5	1 1/2	6
L1307-3H	1/2 round	3 1/2	1 1/4	5
L1308-6	5/8 round	6	1 1/2	7 3/4
L1309-8	3/4 round	8	1 7/8	10 1/4
L1310-8	1 round	8	2 3/8	11



L709

Shagreen Caviar Leather (45)



L710\*

Worn Coal Ash Leather (49)



L535-L538\* Series  
Rattlesnake White Leather (23)



L1307-L1310\* series  
Woven Cherry Royale Leather (46)

\* Denotes custom sizes available

## OUR NEWEST LEATHER COLORS



Worn Leather Cappuccino 48 (WORN02)



Worn Leather Coal Ash 49 (WORN03)



Luv-a-Bull Darkest Blue 50 (LVB09)



Cashmere Calf Dusky Pink Leather 51 (CC82)



Royal Hide Mineral 52 (RH493)

## Standard Finishes - Custom Finishes are Available

3 and 3A



Polished Brass (Use 3A for Unlacquered Brass)

9



Polished Bronze

CU



Polished Copper

14



Polished Nickel

26



Polished Chrome

S10B



Heritage Bronze

4



Satin Brass

10



Satin Bronze

SCU



Satin Copper

15



Satin Nickel

26D



Satin Chrome

19



Satin Black

M4



Matte Satin Brass

M10



Matte Satin Bronze

MSCU



Matte Satin Copper

M15



Matte Satin Nickel

M26D



Matte Satin Chrome

M19



Matte Satin Black

AF



French Gold

10B



Oil Rubbed Bronze

11



Antique Copper

15B



Pewter

15CC



Nickel Stainless

D19



Distressed Black

5



Antique Brass

M10B



Matte Oil Rubbed Bronze

M11



Matte Antique Copper

M15B



Matte Pewter

AB



Antique Bronze

M5



Matte Antique Brass

D20



Distressed Statuary Bronze

D11



Distressed Antique Copper

D15B



Distressed Pewter

20



Light Statuary Bronze

D5



Distressed Antique Brass

M20



Matte Light Statuary Bronze

20A



Dark Statuary Bronze

M20A



Matte Dark Statuary Bronze

D10B

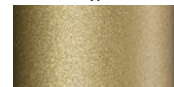


Distressed Oil Rubbed Bronze

There may be slight variations between printed images and actual finish.

### Our Newest Finishes

4F



Frost Brass

15F



Frost Nickel

26F



Frost Chrome

WB



Weathered Brass

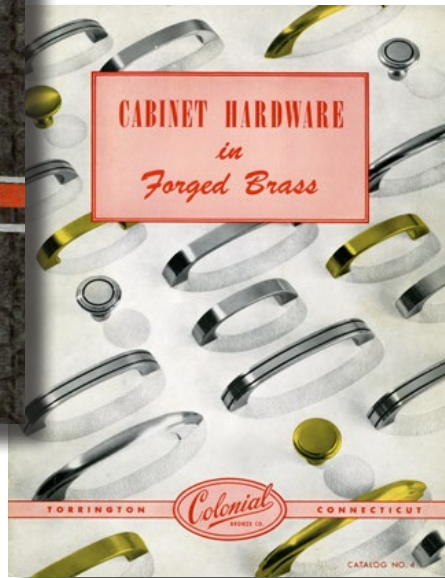
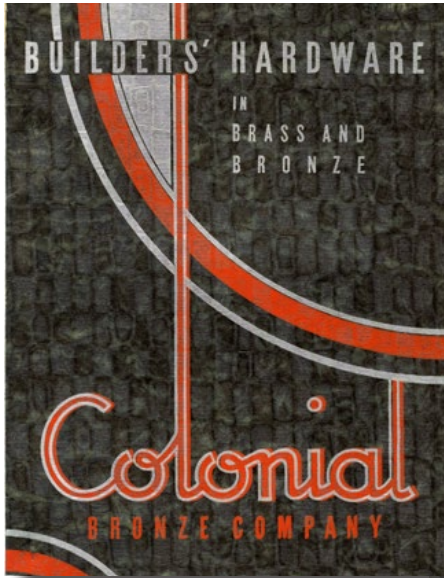


**DPHA**  
Decorative Plumbing  
& Hardware Association

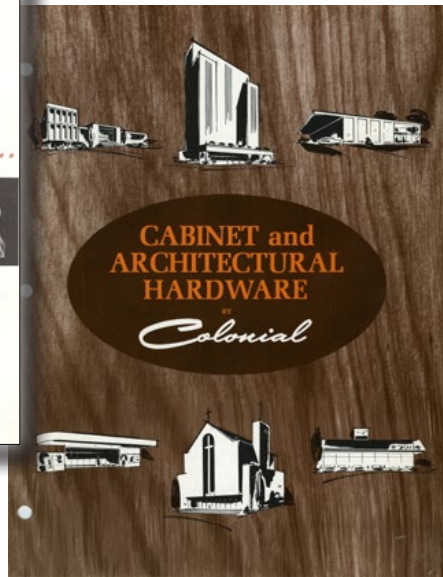
Charter Member

Like us on Facebook/Instagram





FINE BRASS HARDWARE SINCE 1927



COLONIAL BRONZE | AMERICAN MADE HAND FINISHED QUALITY

Style	C-C	Soze	OA
275-8	8	1 1/4 X 1/2	10
275-12	12	1 1/4 X 1/2	16
413-6	6	1/2	7
414-8	8	5/8	9
415-10	10	3/4	11
457-6	6	1	8
457-8	8	1	10
460-1	1	1 1/4 X 2	2
460-4	4	1 1/4 X 5	5
490-1H	1 1/2	5/8 X 2	2
490-4	4	5/8 X 6	6
534	1/2	1 1/4	1 1/2
535-3	3	1/2	4
535-6	6	1/2	7
536-8	8	5/8	9 1/2
537-10	10	3/4	12
545-4	4	1/2	5
546-6	6	5/8	7 1/2
547-8	8	3/4	10
566-10	10	1	14
548	3/4	1 1/4	NA
549	1	1 1/4	NA
550	1 1/4	1 1/4	NA



275 Custom Lengths up to 30"



413-415 Custom Lengths up to 30"



457 Custom Lengths up to 30"



460 Custom Lengths up to 30"



490 Custom Lengths up to 30"



534



535-537 Custom Lengths up to 30"



545-546 Custom lengths up to 24"  
547, 566 Custom lengths up to 30"



548-550



FINISHES SO BEAUTIFUL.



MINIMUM 94% RECYCLED CONTENT  
PRE-CONSUMER



551-552, Custom lengths up to 24"  
553, 567 Custom Lengths up to 30"



557-558 Custom lengths up to 24"  
559, 568 Custom Lengths up to 30"



560-562



563-564 Custom lengths up to 24"  
565, 569 Custom Lengths up to 30"



667 Custom Lengths up to 24"



668 Custom Lengths up to 24"



669 Custom Lengths up to 18"



710 Custom Lengths up to 24"



712 Custom Lengths up to 24"

Style	C-C	Size	OA
551	4	1/2	5
552	6	5/8	7 1/2
553	8	3/4	10
567	10	1	14
557	4	1/2	5
558	6	5/8	7 1/2
559	8	3/4	10
568	10	1	14
560	3/4	1 1/4	NA
561	1	1 1/4	NA
562	1 1/4	1 1/4	NA
563	4	1/2	5
564	6	5/8	7 1/2
565	8	3/4	10
569	10	1	14
667-2	2	1/4 x 1	2 3/8
667-4	4	1/4 x 1	4 3/8
667-6	6	1/4 x 1	6 3/8
668-2	2	1/4 x 1	2 1/2
668-4	4	1/4 x 1	4 1/2
668-6	6	1/4 x 1	6 1/2
669-2	2	1 x 1 x 1 1/4	2 3/8
669-4	4	1 x 1 x 1 1/4	4 3/8
669-6	6	1 x 1 x 1 1/4	6 3/8
710-2	2	1 1/2	2 1/2
710-5	5	1 1/2	6
712-1H	1 1/2	1 x 1 x 1 1/4	2 1/2
712-3	3	1 x 1 x 1 1/4	4

# SOLID BRASS CABINET KNOBS AND PULLS

Style	C-C	Soze	OA
713-2	2	1 1/2 X 1/2	2 1/2
713-4	4	1 1/2 X 1/2	4 1/2
714-3	3	1 x 1 x 1 1/4	4
714-5	5	1 x 1 x 1 1/4	6
715-3	3	1 X 1/4	4
715-5	5	1 X 1/4	6
716-3	3	1 x 1 x 1 1/4	4
716-5	5	1 x 1 x 1 1/4	6
717-3	3	1 X 1/4	4
717-5	5	1 X 1/4	6
718-3	3	1 X 1/4	4
718-4	4	1 X 1/4	6
719-4	4	1 X 1/4	6
719-6	6	1 X 1/4	8
730-6	6	3/8	6 1/2
731-8	8	5/8	8 1/2
732-8	8	3/4	8 1/2
733-8	8	1	8 1/2
735	1 1/2 SQ	1 3/16	NA



713 Custom Lengths up to 30"



714 Custom Lengths up to 24"



715 Custom Lengths up to 24"



716 Custom Lengths up to 24"



717 Custom Lengths up to 24"



718 Custom Lengths up to 18"



719 Custom Lengths up to 24"



730-733 Custom Lengths up to 30"



735



741-743 Custom sizes not available



745 Custom Lengths up to 30"



745 pull profile  
Rounded Back for more comfortable grip



746, 747, 845 Custom Lengths up to 30"



746, 747 pull profile  
Rounded Back for more comfortable grip



805 Custom Lengths up to 30"



749



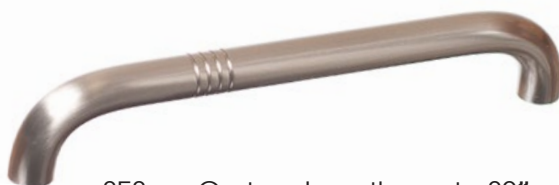
813, 815 Custom sizes not available



844 Custom Lengths up to 30"



845 appliance pull profile  
Rounded Back for more comfortable grip



858 Custom Lengths up to 30"

Style	C-C	Soze	OA
741	3	7/16	3 3/8
742	3 1/2	7/16	3 7/8
743	4	7/16	4 3/8
745-6	6	7/16	6 7/16
745-8	8	7/16	8 7/16
746-8	8	5/8" Half round	8 3/8
747-8	8	3/4" Half round	8 3/8
749	1 1/2 SQ	1 3/16	NA
805-6	6	1/2	6 1/2
805-8	8	1/2	8 1/2
813	6	1/2	6 1/2
815	10	3/4	10 3/4
844-8	8	1x 5/8*	8 1/2
844-10	10	1x 5/8*	10 1/2
845-8	8	1" half round	8 1/2
845-10	10	1" half round	10 1/2
858-6	6	3/4	6 3/4
858-8	8	3/4	8 3/4



MINIMUM 94% RECYCLED CONTENT  
PRE-CONSUMER

Style	Diameter	Proj
104	3/4	1
105	1	1 1/8
110	1	1 3/16
111	1 1/4	1 3/16
112	1 1/2	1 3/16
114	3/4	3/4
115	7/8	3/4
116	1 1/8	1 1/16
117	1	1
118	1 1/4	1 3/16
119	5/8	5/8
120	1 SQ	1 3/16
121	1 1/4 SQ	1 3/16
122	1 1/2 SQ	1 3/16
126	1 1/4 SQ	1 3/16
127	1 1/2 SQ	1 3/16
129	7/8	7/8
130	1 HEX	1 3/16
131	1 1/4 HEX	1 3/16
132	1 1/2 HEX	1 3/16
137	1 1/16	1
138	1 1/16	1
139	1 1/8	1
140	1 3/8	1 5/16
141	1/2	1
142	3/4	1 1/8
143	1	1 1/4
150	1 1/2	1 1/2
151	1 1/16	1 5/16
152	1 1/4	1
153	1 3/8	1 1/16
160	1 1/2	1/8
161	2 1/8	1/8
162	2 1/2	1/8
170	3/4	3/4
171	1 1/8	1
172	1 1/2	1 3/8
173	1 1/8	1 1/8
174	1 1/4	1 1/4



104-105



110-112



114, 117, 118



115-116



119, 129, 139, 150



120-122



126, 127



130-132



137, 140



137



141-143



151-153



160-162



170-172



173, 174

Finishes for Life  
TARNISH-FREE GUARANTEED®

FINISHES SO BEAUTIFUL.



175

Split Finishes Available



180, 181



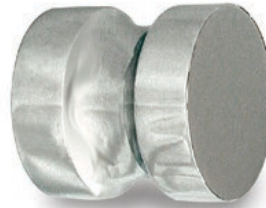
182, 183



184, 185



186, 187



188, 189



124, 190-193



195



196, 197



198, 199



202, 203



B203



308, 309

Split Finishes Available



376, 377

Split Finishes Available



378

Split Finishes Available

Style	Dia	Proj
376	7/8	1
377	1 1/4	1 1/4
378	1 1/4	1
124	1 1/8	1 1/8
175	1 1/4	1 1/4
180	1	1 3/32
181	1 1/4	1 1/4
182	1	1
183	1 1/4	1 1/4
184	1	1
185	1 1/4	1 1/4
186	1	1
187	1 1/4	1 1/4
188	1 1/4	1 1/4
189	1 1/4	1 1/4
190	3/4	3/4
191	1	1
192	1 1/4	11/8
193	1 1/2	1 1/4
195	9/16	1 1/4
196	1	1 1/4
197	1 1/4	1 9/16
198	1 x 1 1/4	1 7/16
199	1 1/4 x 1 1/2	1 5/8
202	1 3/4	3/16
203	1 1/2	3/16
308	3/8	1 1/4
309	3/8	1 1/4
B203	1 1/2	3/16



# SOLID BRASS CABINET KNOBS AND PULLS

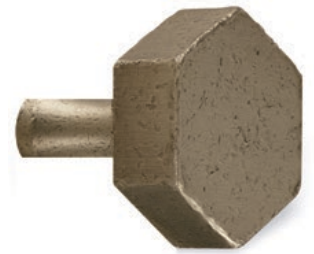
Style	Diameter	Proj
510	1	1 3/16
511	1 1/4	1 3/16
512	1 1/2	1 3/16
520	1 SQ	1 3/16
521	1 1/4 SQ	1 3/16
522	1 1/2 SQ	1 3/16
530	1 Hex	1 3/16
531	1 1/4 Hex	1 3/16
532	1 1/2 Hex	1 3/16
540	5/8	1 1/8
541	5/8	1 1/8
609	5/8 HR	1
655	1 1/4	1 1/8
656 rose	1 1/4	3/16 thick
657	1 1/2	1 3/16
658 rose	1 5/8	3/16 thick
674	1 3/16	1
675	1 3/8	1 1/4
676	1 1/2	1 1/4
1301	15/32	1 1/4



510-512



520-522



530-532



540



541



609



657 with 658 Rose



674-676

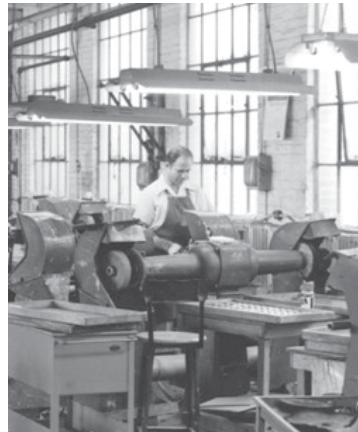


1301  
Split Finishes Available



American woman hard at work during WWII

Colonial's hand finishing in 1940



2016 American craftsmen hard at work today

**Finishes for Life**  
TARNISH-FREE GUARANTEED®

FINISHES SO BEAUTIFUL,



1311, 1312  
Split Finishes Available



1330  
Split Finishes Available



1331  
Split Finishes Available



1384

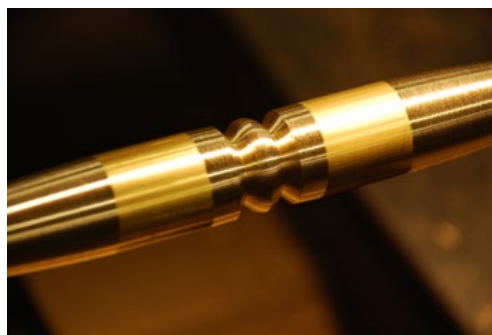


1386, 1387  
Split Finishes Available



1920

Style	Dia.	Proj	OA
1311	1 1/4	1 3/16	NA
1312	1 1/2	1 3/16	NA
1330	1/4	1 1/8	1 7/8
1331	3/8	1 1/8	1 7/8
1384	1 1/4	1	NA
1386	1	1	NA
1387	1 1/4	1 1/4	NA
1920	1 1/4	1 1/8	NA



Each piece is exquisitely machined and finished



Colonial's hand finishing today. No machine can duplicate our quality™



MINIMUM 94% RECYCLED CONTENT  
PRE-CONSUMER

SO DURABLE, THEY'RE GUARANTEED FOR LIFE™

Style	C-C	Face	Overall
165	3 1/2	7/16	4
167	3	7/16	3 1/2
206-6	6	1 3/4	6 1/2
206-8	8	1 3/4	8 1/2
206-10	10	1 3/4	10 1/2
206-12	12	1 3/4	12 1/2
260-3	3	1/2	5
260-4H	4 1/2	1/2	6 1/2
270-3	3	3/4 x 3/8	4
270-6	6	3/4 x 3/8	8
270-10	10	3/4 x 3/8	14
271-4	4	3/4 x 1/2	6
271-6	6	3/4 x 1/2	8
271-8	8	3/4 x 1/2	10
271-10	10	3/4 x 1/2	14
300-1H	1 1/2	1/2	2 1/2
300-2H	2 1/2	1/2	3 1/2
300-3	3	1/2	4
300-3H	3 1/2	1/2	4 1/2
300-6	6	1/2	8
300-8	8	1/2	10
304	3	1/2	4
305	3 1/2	1/2	4 1/2
306	3	7/16 SQ	4 1/2
307	3 1/2	7/16 SQ	6
310**	ADJ	3/8	4 3/4
311**	ADJ	3/8	6 1/2

\*\* Fixed Centers Recommended for larger quantities - upcharge applies



165-167

Custom lengths available up to 30"



206



260

Custom lengths available up to 30"



270

Custom lengths available up to 30"



271

Custom lengths available up to 30"



300 Series



Custom lengths available up to 30"



304, 305



Custom lengths available up to 30"



306, 307



Custom lengths available up to 18"

Split Finishes Available



310, 311



FINISHES SO BEAUTIFUL.



340



341



351-353



358-360



403



404



405



420-455

Style	C-C	Face	Overall
340	4	3/4	6
341	4	3/4	6
351	3	5/16	13/16
352	3 1/2	5/16	13/16
353	4	5/16	13/16
354	2 3/4	5/16	11/8
355	3	5/16	11/8
356	3 1/2	5/16	11/8
357	4	5/16	11/8
358	3	5/16	13/16
359	3 1/2	5/16	13/16
360	4	5/16	13/16
403	3 1/2	4 x 11/16	NA
404	3	3 7/16 x 1 11/16	NA
405	3	4 11/16 x 1 3/8	NA
420	1	2	NA
425	1 1/2	2 1/2	NA
435	2 1/2, 3	3 1/2	NA
445	3 1/2	4 1/2	NA
455	3 1/2	5 1/2	NA



MINIMUM 94% RECYCLED CONTENT  
PRE-CONSUMER

SO DURABLE, THEY'RE GUARANTEED FOR LIFE™

For a complete listing of cabinet, bath, architectural and made-to-order hardware, call Colonial Bronze at (860) 489-9233 or visit [www.colonialbronze.com](http://www.colonialbronze.com).

Style	C-C	Dia.	Overall
500-1H	1 1/2	1/2	2 1/2
500-2H	2 1/2	1/2	3 1/2
500-3	3	1/2	4
500-3H	3 1/2	1/2	4 1/2
500-6	6	1/2	8
500-8	8	1/2	10
506	3	7/16 SQ	4 1/2
507	3 1/2	7/16 SQ	6
508	4	3/4 x 3/8	6
600	3 1/2	1/2	4 5/16
601	3	1/2	3 13/16
610	3	5/8 HR	4
611	3 1/2	5/8 HR	4 1/2
612	3	1/4 x 3/8	4 1/4
613	3 1/2	1/4 x 3/8	4 3/4
661	3	5/16	3 3/8
662	3 1/2	5/16	3 7/8
663	4	5/16	4 3/8
706	1	1 1/2	2 1/8
707	2	2 1/2	2 1/8
708	1	1 1/2	1 5/8
709	2	2 1/2	1 5/8

Custom lengths available up to 30"



500



Straight Leg

Custom lengths available up to 30"



506-507



Straight Leg

Custom lengths available up to 30"



508



Straight Leg



600-601

Custom lengths available up to 24"



610-611

Custom lengths available up to 24"



612-613

Custom lengths are NOT available



661-663



708-709



706-707



FINISHES SO BEAUTIFUL.



750-776



800-802

Split Finishes Available



1302-1303

*Tapered Legs*

*Custom lengths available up to 30"*

Split Finishes Available



1304-1305

*Tapered Legs*

*Custom lengths available up to 30"*

Split Finishes Available



1332, 1336

*Custom lengths available up to 30"*

Split Finishes Available



1333, 1337

*Custom lengths available up to 30"*

Split Finishes Available



1334, 1338

*Custom lengths available up to 30"*

Split Finishes Available



1335, 1339

*Custom lengths available up to 30"*

Style	C-C	Dia.	Overall
750	2 1/2	5/16	1 3/16
751	3	5/16	1 3/16
752	3 1/2	5/16	1 3/16
753	4	5/16	1 3/16
754	5	5/16	1 3/16
755	6	5/16	1 3/16
775	2 3/4	5/16	1 3/16
776	3 3/4	5/16	1 3/16
800	3	5/8	3 5/16
801	3 1/2	5/8	3 13/16
802	4	5/8	4 5/16
1302	3	15/32	4 1/2
1303	3 1/2	15/32	5
1304	3	15/32	4
1305	3 1/2	15/32	4 1/2
1332	3 1/2	1 1/8	4 1/4
1333	3 1/2	1 1/8	4 1/4
1334	3 1/2	1 1/8	4 3/4
1335	3 1/2	1 1/8	4 3/4
1336	3	1 1/8	3 3/4
1337	3	1 1/8	3 3/4
1338	3	1 1/8	4 1/4
1339	3	1 1/8	4 1/4

SO DURABLE, THEY'RE GUARANTEED FOR LIFE™



MINIMUM 94% RECYCLED CONTENT  
PRE-CONSUMER

Style	C-C	Dia.	Overall	Proj.
205	6, 8	1/2	NA	1 3/4
222	6 to 30	3/4	NA	2 1/2
232	6 to 30	3/4	NA	2 1/2
236	6 to 30	1 HR	NA	2
240-14	14	1 1/4	23	2 3/8
240-6	6	1	9	2 1/8
240-8	8	1 1/4	15	2 3/8
241-14	14	1 1/4 max	23	2 3/8
241-6	6	1 max	9	2 1/8
241-8	8	1 1/4 max	15	2 3/8
242	8, 10	1	12, 14	2 1/4
246-18	18	3/4	22	1 7/8
246-24	24	3/4	28	1 7/8
246-6	6	3/4	10	1 7/8
246-8	8	3/4	12	1 7/8
247-18	18	5/8	22	1 7/8
247-24	24	5/8	28	1 7/8
247-6	6	5/8	10	1 7/8
247-8	8	5/8	12	1 7/8
40-6	6	1	8 1/2	1 1/2
40-8	8	1	10 1/2	1 1/2
41-6	6	1	7	1 1/2
41-8	8	1	9	1 1/2
42-18	18	1 1/4	20 1/2	2 1/2
42-24	24	1 1/4	26 1/2	2 1/2
42-30	30	1 1/4	32 1/2	2 1/2
822	6 to 30	3/4	NA	1 7/8
832	6 to 30	3/4	NA	1 7/8
847	6, 8, 18	5/8	1 3/4	10, 12, 22

Split Finishes Available



40

Custom lengths available

Split Finishes Available



41

Custom lengths available

Split Finishes Available



42

Custom lengths available



205

Custom lengths available



222, 822

Custom lengths available



232, 832

Custom lengths available



236, 836

Custom lengths available



240



241



242, 246, 247, 847

Custom lengths available



FINISHES SO BEAUTIFUL.

Rounded Back  
for more  
comfortable grip



250, 850



253



254

*Custom lengths available*



256

*Custom lengths available*



257

*Custom lengths available*



258, 858

*Custom lengths available*



261, 262



266



851



852



855

Style	C-C	Dia.	Proj.	Overall
250	6, 8, 10, 18	3/4	2 1/2	NA
850	6, 8, 10, 18	3/4	1 7/8	NA
253	10	3/4	3 1/4	11 3/4
254	8, 10, 12	3/4 x 1/2	1 3/4	12, 14, 16
256	8, 10, 12	1" half round	1 3/4	12, 14, 16
257	8, 10, 12	1" half round	1 3/4	12, 14, 16
258	6, 8	3/4	2 1/2	NA
261	9 1/2	3/4	1 7/16	12 1/2
262	9 1/2	1	2	12 1/2
266	12	3/4	1 7/16	12 3/4
851	6, 8, 10	3/4	1 7/8	8, 10, 12
852	10	3/4	2	12
855	16	3/4	1 7/8	18



Colonial Bronze solid brass appliance pulls can be ordered in any of our gorgeous finishes to upgrade your appliances – freezers, refrigerators, warmers, ovens, dishwashers and will coordinate perfectly with Colonial's hardware for your cabinets.

SO DURABLE, THEY'RE GUARANTEED FOR LIFE™

# THE BRONZE



## 2018 NEW ITEMS CATALOG

# THE BRONZE

511 Winsted Road, Torrington, CT 06790  
Tel (860) 489-9233 | Toll-Free (800) 355-7894  
Toll-Free Fax (800) 355-7903 | Fax (860) 482-8760  
Orders and Tech Support: [sales@thebronze.com](mailto:sales@thebronze.com)  
Web: [www.colonialbronze.com](http://www.colonialbronze.com)

Follow us on Instagram @ColonialBronzeco and like us on Facebook  
Tag us with #ColonialBronze and #onlyatTheBronze

