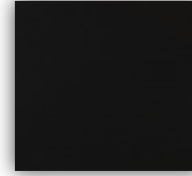




Fenix Countersinks

fully integrated top/stainless steel drain pan/drain cover/includes overflow

NOT AVAILABLE WITHOUT VANITY



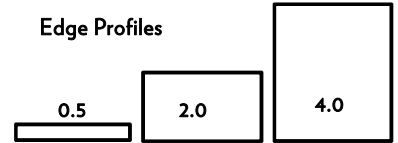
C41 Black Fenix

FS - C41 - 0.5 - 30 - F - 3 - FSR1

Fenix Countersink Black Fenix Edge Profile Size Overhang Faucet Holes Sink Selection

Size	Item #	0.5	2.0	4.0
24	FS-[color]-[edge]-24-[overhang]-[faucet holes]-[sink]	2545	2945	3145
30	FS-[color]-[edge]-30-[overhang]-[faucet holes]-[sink]	2845	3245	3445
36	FS-[color]-[edge]-36-[overhang]-[faucet holes]-[sink]	3195	3595	3795
42	FS-[color]-[edge]-42-[overhang]-[faucet holes]-[sink]	3495	3895	4095
48	FS-[color]-[edge]-48-[overhang]-[faucet holes]-[sink]	3845	4245	4445
54	FS-[color]-[edge]-54-[overhang]-[faucet holes]-[sink]	4145	4545	4745
60	FS-[color]-[edge]-60-[overhang]-[faucet holes]-[sink]	4495	4895	5095
66	FS-[color]-[edge]-66-[overhang]-[faucet holes]-[sink]	4795	5195	5395
72	FS-[color]-[edge]-72-[overhang]-[faucet holes]-[sink]	5145	5545	5745
78	FS-[color]-[edge]-78-[overhang]-[faucet holes]-[sink]	5445	5845	6045
84	FS-[color]-[edge]-84-[overhang]-[faucet holes]-[sink]	5695	6095	6295
48D	FS-[color]-[edge]-48D-[overhang]-[faucet holes]-[sink]	4445	4845	5045
54D	FS-[color]-[edge]-54D-[overhang]-[faucet holes]-[sink]	4745	5145	5345
60D	FS-[color]-[edge]-60D-[overhang]-[faucet holes]-[sink]	5095	5495	5695
66D	FS-[color]-[edge]-66D-[overhang]-[faucet holes]-[sink]	5395	5795	5995
72D	FS-[color]-[edge]-72D-[overhang]-[faucet holes]-[sink]	5745	6145	6345
78D	FS-[color]-[edge]-78D-[overhang]-[faucet holes]-[sink]	6045	6445	6645
84D	FS-[color]-[edge]-84D-[overhang]-[faucet holes]-[sink]	6395	6795	6995

Edge Profiles



How does it work?

- Every countersink has a stainless steel drain pan under the included drain cover
- The drain cover is removable for cleaning

COMPACT 18" depth

- Pricing is same as standard depth
- Add "COM" to width ex: 30COM
- Only works with FSR3 Sink

FSR-1 Included in price

- 16" x 13" x 4 3/4"
- Standard slot overflow placement in the front
- Minimum countertop width is 21"
- Minimum countertop depth is 19.5" leaving 3" for deck mount faucets



FSR-2 + \$125

- 21" x 13" x 4 3/4"
- Standard slot overflow placement in the front
- Minimum countertop width is 26"
- Minimum countertop depth is 19.5" leaving 3" for deck mount faucets



FSR-3 Included in price

- 16" x 10 1/4" x 4 3/4"
- Designed for COM Compact Depth 18"D countersinks
- Standard slot overflow placement in the front
- Minimum countertop width is 21"
- Minimum countertop depth: 18 1/8" leaving 4" deck mount faucet 15 7/8" for wall mount faucet



TROUGH SINKS

- Single Drain in the center - Use 05/06 single sink configurations
- Standard slot overflow placement in the front
- Minimum countertop width is indicated by item number
- Minimum countertop depth is 19.5" leaving 3" for deck mount faucets
- Multiple Faucet Placement - Please specify
- Faucet Code for (2) single hole faucets = 2x1
- Faucet Code for (2) triple hole faucets = 2x3

TROUGH48 + \$425

40" x 13" x 4 3/4"

TROUGH54 + \$450

46" x 13" x 4 3/4"

TROUGH60 + \$475

52" x 13" x 4 3/4"

TROUGH72 + \$500

64" x 13" x 4 3/4"





192/292 Henley

Features

Includes 1/4" Metal detail on door and 3/4" metal trim around base.
 Hardware and Cap feet sold separately.
 Drawers and interior finished to match exterior
 Built using 3/4" PUREBOND furniture grade plywood
 BLUM full extension, soft close drawer runners
 BLUM 120 degree, soft closing doors

18" compact depth available
 Pricing is same as standard 21 1/2" depth
 Add "COM" to item number

Brass Finish Options

BB Burnished Brass Waxed
 SB Satin Brass (lacquered)
 AB Antique Brass (lacquered)
 PN Polished Nickel (plated over brass)

Steel Finish Options

OC Oil Can

A-Paint - Matte

A30 White
 A31 Black
 A32 Nonchalant
 A34 Robin Egg
 A35 Vanilla
 A36 Harbor Gray
 A37 Silverstream
 A38 Sable
 A39 Navy Blue

A-Stain

A2 Normandy
 A3 Briar
 A4 Brandy
 A6 Black Forest
 A8 Tombstone
 A20 Toffee
 A21 Cocoa
 A22 Driftwood

B-Wood

B39 English Walnut
 B41 French Walnut
 B42 Granite Walnut
 B54 Cerused Oak
 B57 Milk Oak
 B58 Manhattan Oak
 B59 Chocolate Oak
 B60 White Oak
 B61 Black Oak

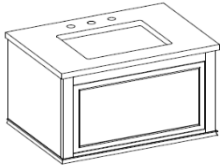
Custom Color A+10%
 Glossy Top Coat A+10%

Example: 30" Henley in BB Burnished Brass and A30 White

292-0230-BB-A30

How to Order

Add Metal finish code to Panel Finish code

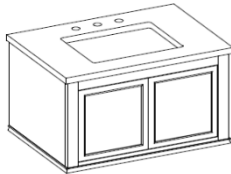


00 Configuration

Wall Mounted Version

Single drawer, split for plumbing

Item#	Without Top	Brass / Steel Finishes	
		A	B
192-0024	24W x 21.5D x 18H	3695	4195
192-0030	30W x 21.5D x 18H	3795	4395
192-0036	36W x 21.5D x 18H	3895	4595



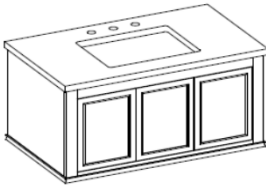
01/02 Configuration

Wall Mounted Version

24" version is a single door hinged right

Item#	Without Top	Brass / Steel Finishes	
		A	B
192-0124	24W x 21.5D x 18H	3595	4095
192-0230	30W x 21.5D x 18H	3795	4295
192-0236	36W x 21.5D x 18H	3995	4495

**MB Metal Base
Compatible**



03/04 Configuration

Single Sink - Centered

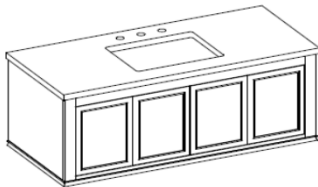
03 has drawer in a drawer on the left

Wall Mounted Version

04 has drawer in a drawer on the right

2 Doors to conceal plumbing

Item#	Without Top	Brass / Steel Finishes	
		A	B
192-0336	36W x 21.5D x 18H	4395	5045
192-0436	36W x 21.5D x 18H	4395	5045



05 Configuration

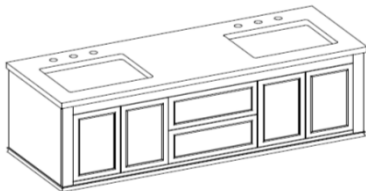
Single Sink - Centered

Drawer in a drawer on both sides

2 Doors in the center

Item#	Without Top	Brass / Steel Finishes	
		A	B
192-0542	42W x 21.5D x 18H	6695	7795
192-0548	48W x 21.5D x 18H	6895	7995
192-0560	60W x 21.5D x 18H	7095	8195

**100 series Not
compatible with the
following options:
HDCI
PTRAY**

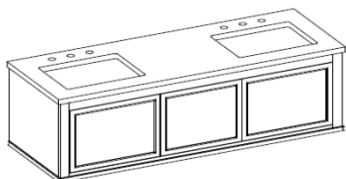


07 Configuration

2 Drawers in the center

Wall Mounted Version

Item#	Without Top	Brass / Steel Finishes	
		A	B
192-0760	60W x 21.5D x 18H	8995	9695
192-0766	66W x 21.5D x 18H	9195	9895
192-0772	72W x 21.5D x 18H	9395	10095



08 Configuration

Double Sink

Drawer in a drawer in center section

Two sink drawers, both split for plumbing

Item#	Without Top	Brass / Steel Finishes	
		A	B
192-0860	60W x 21.5D x 18H	9495	10195
192-0866	66W x 21.5D x 18H	9695	10395
192-0872	72W x 21.5D x 18H	9895	10595

Square Cap Feet - \$69.95 ea



SQCAP-PN - Polished Nickel
 SQCAP-BB - Burnished Brass (Waxed)
 SQCAP-SB - Satin Brass (lacquered)
 SQCAP-AB - Antique Brass (lacquered)
 SQCAP-OC - Oil Can (lacquered)

3" Square Ring Pull Hardware - \$89.95 ea



3SQRING-PN - Polished Nickel
 3SQRING-SN - Satin Nickel
 3SQRING-BB - Burnished Brass Waxed
 3SQRING-SB - Satin Brass (lacquered)
 3SQRING-OC - Oil Can (lacquered)

3" Recessed Square Knob - \$275.00 ea



RSKNOB-PN - Polished Nickel
 RSKNOB-BB - Burnished Brass Waxed
 RSKNOB-SB - Satin Brass (lacquered)
 RSKNOB-AB - Ant. Brass (lacquered)
 RSKNOB-OC - Oil Can (lacquered)



00 Configuration

False top drawer

Bottom drawer scooped for ptrap

Middle drawer split for plumbing

Brass / Steel Finishes

Item#	Without Top	Brass / Steel Finishes	
		A	B
292-0024	24W x 21.5D x 34H	4045	4595
292-0030	30W x 21.5D x 34H	4145	4745
292-0036	36W x 21.5D x 34H	4295	4895

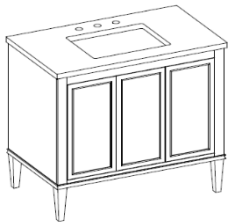


01/02 Configuration

24" version is a single door hinged right

Brass / Steel Finishes

Item#	Without Top	Brass / Steel Finishes	
		A	B
292-0124	24W x 21.5D x 34H	3595	4095
292-0230	30W x 21.5D x 34H	3795	4295
292-0236	36W x 21.5D x 34H	3995	4495



03/04 Configuration

Single Sink - Centered

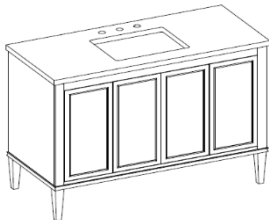
03 has double drawer pullout on the left

04 has double drawer pullout on the right

2 Doors to conceal plumbing

Brass / Steel Finishes

Item#	Without Top	Brass / Steel Finishes	
		A	B
292-0336	36W x 21.5D x 34H	4395	5045
292-0436	36W x 21.5D x 34H	4395	5045



05 Configuration

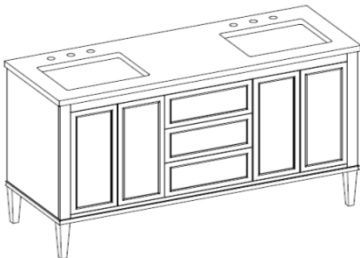
Single Sink - Centered

2 Doors to conceal plumbing

Double drawer pullouts on both sides

Brass / Steel Finishes

Item#	Without Top	Brass / Steel Finishes	
		A	B
292-0542	42W x 21.5D x 34H	6695	7795
292-0548	48W x 21.5D x 34H	6895	7995
292-0560	60W x 21.5D x 34H	7095	8195



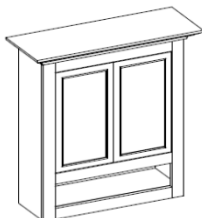
07 Configuration

3 drawers in the middle

Double Sink

Brass / Steel Finishes

Item#	Without Top	Brass / Steel Finishes	
		A	B
292-0760	60W x 21.5D x 34H	8995	9695
292-0766	66W x 21.5D x 34H	9195	9895
292-0772	72W x 21.5D x 34H	9395	10095



Henley OTJ Cabinet

*Measurements are without crown molding

Includes 2 adjustable wood shelves

Brass / Steel Finishes

Item#	Without Top	Brass / Steel Finishes	
		A	B
292-2724	*24W x *8.5D x 32H	2195	2545
292-2730	*30W x *8.5D x 32H	2295	2645

*Measurements are without crown molding

Includes 3 adjustable shelves in upper section

Includes 2 adjustable shelves in lower section

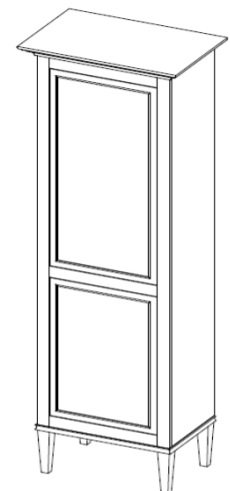
Linen Cabinet

Hinge Left or Hinge Right

Hamper Option - \$350.00

Brass / Steel Finishes

Item#	Without Top	Brass / Steel Finishes	
		A	B
292-0924L	*22W x *15D x 78H	4395	5295
292-0924R	*22W x *15D x 78H	4395	5295





504 Josie Wall Mount

Features

Full Inset - Door/Drawer reveal is on the front
 Grain Direction is Horizontal on Fronts
 Grain Direction is Vertical on Sides
 Interior is finished to match exterior
 Includes thin metal trim surrounding each drawer

18" compact depth available
 Pricing is same as standard 21 1/2" depth
 Add "COM" to item number

How to Order

Add Metal finish code to Panel Finish code

Example
 30" Josie WH in BB Burnished Brass and A30 White

504-0130-BB-A30

Space for Undermount Sink 5.25"H

Top Program Compatibility

Quartz - 2.0 min edge thickness
 Stone Top - 2.5 min edge thickness
 Guildstone - 2.0 min edge thickness
 Fenix - 2.0 min edge thickness
 Fireclay - fully compatible

Standard Installation

For standard 36"H to top of countertop:
 Waste to be placed 24"H above finished floor in line with sink placement of cabinet.
 Supply lines to be placed 24"H above finished floor

Blocking between studs with a 2x6 is recommended.
 Once shimmed plumb and level, secure with 2.5" screws/lag bolts across the top and bottom of cabinet

Brass Finish Options

BB Burnished Brass Waxed
 SB Satin Brass (lacquered)
 AB Antique Brass (lacquered)
 PN Polished Nickel (plated over brass)

Steel Finish Options

OC Oil Can

A-Paint - Matte

A30 White
 A31 Black
 A32 Nonchalant
 A34 Robin Egg
 A35 Vanilla
 A36 Harbor Gray
 A37 Silverstream
 A38 Sable
 A39 Navy Blue

A-Stain

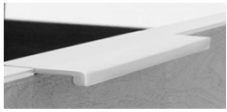
A2 Normandy
 A3 Briar
 A4 Brandy
 A6 Black Forest
 A8 Tombstone
 A20 Toffee
 A21 Cocoa
 A22 Driftwood

B-Wood

B39 English Walnut
 B41 French Walnut
 B42 Granite Walnut
 B54 Cerused Oak
 B57 Milk Oak
 B58 Manhattan Oak
 B59 Chocolate Oak
 B60 White Oak
 B61 Black Oak

Custom Color A+10%
 Glossy Top Coat A+10%

8" Edge Pull Hardware - \$89.95 ea



8EDGE-BB - Burnished Brass
 8EDGE-AB - Antique Brass
 8EDGE-SB - Satin Brass
 8EDGE-PN - Polished Nickel
 8EDGE-OC - Oil Can

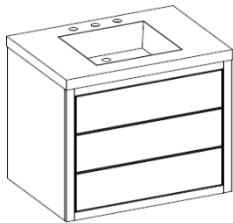
3" Ring Pull Hardware - \$89.95 ea



3SQRING-PN - Polished Nickel
 3SQRING-SN - Satin Nickel
 3SQRING-BB - Burnished Brass Waxed
 3SQRING-SB - Satin Brass (lacquered)
 3SQRING-OC - Oil Can



3RDRING-PN - Polished Nickel
 3RDRING-SN - Satin Nickel
 3RDRING-BB - Burnished Brass Waxed
 3RDRING-SB - Satin Brass (lacquered)
 3RDRING-OC - Oil Can

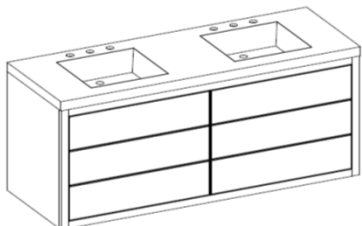


01 Configuration

Single Sink
 Top drawer split for plumbing
 Middle drawer split for plumbing

Space for undermount sink is 5.25"
 Bottom drawer scooped for ptrap

Item#	Without Top	Brass/Steel Finishes	
		A	B
504-0124	24W x 21.5D x 26H	4045	4695
504-0130	30W x 21.5D x 26H	4145	4845
504-0136	36W x 21.5D x 26H	4245	4945
504-0042	42W x 21.5D x 26H	4395	5045

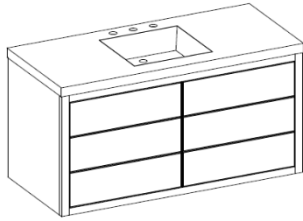


02 Configuration

Double Sink
 Top drawers split for plumbing
 Middle drawers split for plumbing

Space for undermount sink is 5.25"
 Bottom drawers scooped for ptrap

Item#	Without Top	Brass/Steel Finishes	
		A	B
504-0248	48W x 21.5D x 26H	6895	7895
504-0260	60W x 21.5D x 26H	7095	8145
504-0266	66W x 21.5D x 26H	7295	8395
504-0272	72W x 21.5D x 26H	7395	8545



05 Configuration

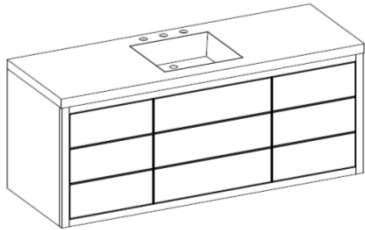
Single Sink Centered

All drawers are full drawers

4 3/4" blind between drawers for drain

Space for undermount sink is 5.25"

Item#	Without Top	Brass/Steel Finishes	
		A	B
504-0536	36W x 21.5D x 26H	6445	7095
504-0542	42W x 21.5D x 26H	6495	7195
504-0548	48W x 21.5D x 26H	6545	7245
504-0560	60W x 21.5D x 26H	6745	7495
504-0572	72W x 21.5D x 26H	6945	7745



06 Configuration

Single Sink Centered

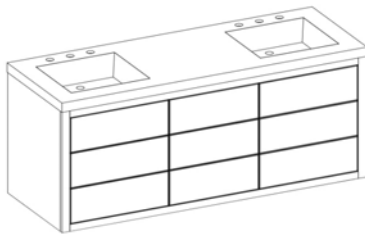
Top drawer under sink is split

Middle drawer under sink is split

Bottom drawer under sink is scooped

Space for undermount sink is 5.25"

Item#	Without Top	Brass/Steel Finishes	
		A	B
504-0648	48W x 21.5D x 26H	7395	8545
504-0660	60W x 21.5D x 26H	7595	8745
504-0672	72W x 21.5D x 26H	7795	8945



08 Configuration

Double Sink

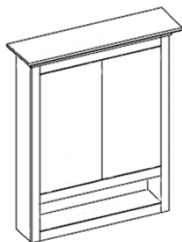
Top drawer under sink is split

Middle drawer under sink is split

Bottom drawer under sink is scooped

Space for undermount sink is 5.25"

Item#	Without Top	Brass/Steel Finishes	
		A	B
504-0860	60W x 21.5D x 26H	8395	9645
504-0866	66W x 21.5D x 26H	8495	9745
504-0872	72W x 21.5D x 26H	8595	9845

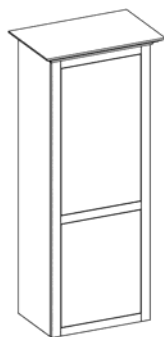


Josie OTJ Cabinet

*Measurements are without crown molding

Includes 2 adjustable wood shelves

Item#	Without Top	Brass/Steel Finishes	
		A	B
505-2724	*24W x *8.5D x 32H	2195	2545
505-2730	*30W x *8.5D x 32H	2295	2645



Linen Cabinet

*Measurements are without crown molding

Includes 3 adjustable shelves in upper section

Includes 2 adjustable shelves in lower section

Hinge Left or Hinge Right

Hamper Option - \$350.00

Item#	Without Top	Brass/Steel Finishes	
		A	B
504-0924L	*22W x *15D x 70H	4195	4995
504-0924R	*22W x *15D x 70H	4195	4995



505 Josie

Features

Full Inset - Door/Drawer reveal is on the front
 Grain Direction is Horizontal on Fronts
 Grain Direction is Vertical on Sides
 Interior is finished to match exterior
 Includes thin metal trim surrounding each drawer
 Includes (4) Josie legs

18" compact depth available
 Pricing is same as standard 21 1/2" depth
 Add "COM" to item number

Space for Undermount Sink 5.25"H

Top Program Compatibility

Quartz - 2.0 min edge thickness
 Stone Top - 2.5 min edge thickness
 Guildstone - 2.0 min edge thickness
 Fenix - 2.0 min edge thickness
 Fireclay - fully compatible

Standard Installation

For standard 36"H to top of countertop:
 Waste to be placed 24"H above finished floor in line with sink placement of cabinet.
 Supply lines to be placed 24"H above finished floor

Blocking between studs with a 2x6 is recommended.
 Once shimmed plumb and level, secure with 2.5" screws/lag bolts across the top and bottom of cabinet

How to Order

Add Metal finish code to Panel Finish code

Example
 30" Josie in BB Burnished Brass and A30 White
505-0130-BB-A30

Brass Finish Options

BB Burnished Brass Waxed
 SB Satin Brass (lacquered)
 AB Antique Brass (lacquered)
 PN Polished Nickel (plated over brass)

Steel Finish Options

OC Oil Can

A-Paint - Matte

A30 White
 A31 Black
 A32 Nonchalant
 A34 Robin Egg
 A35 Vanilla
 A36 Harbor Gray
 A37 Silverstream
 A38 Sable
 A39 Navy Blue

A-Stain

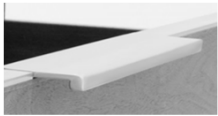
A2 Normandy
 A3 Briar
 A4 Brandy
 A6 Black Forest
 A8 Tombstone
 A20 Toffee
 A21 Cocoa
 A22 Driftwood

B-Wood

B39 English Walnut
 B41 French Walnut
 B42 Granite Walnut
 B54 Cerused Oak
 B57 Milk Oak
 B58 Manhattan Oak
 B59 Chocolate Oak
 B60 White Oak
 B61 Black Oak

Custom Color A+10%
 Glossy Top Coat A+10%

8" Edge Pull Hardware - \$89.95 ea



8EDGE-BB - Burnished Brass Waxed
 8EDGE-AB - Antique Brass
 8EDGE-SB - Satin Brass
 8EDGE-PN - Polished Nickel
 8EDGE-OC - Oil Can

3" Ring Pull Hardware - \$89.95 ea



3SQRING-PN - Polished Nickel
 3SQRING-SN - Satin Nickel
 3SQRING-BB - Burnished Brass Waxed
 3SQRING-SB - Satin Brass (lacquered)
 3SQRING-OC - Oil Can



3RDRING-PN - Polished Nickel
 3RDRING-SN - Satin Nickel
 3RDRING-BB - Burnished Brass Waxed
 3RDRING-SB - Satin Brass (lacquered)
 3RDRING-OC - Oil Can



01 Configuration

Single Sink
 Top drawer split for plumbing
 Middle drawer split for plumbing

Space for undermount sink is 5.25"
 Bottom drawer scooped for ptrap

Item#	Without Top	Brass/Steel Finishes	
		A	B
505-0124	24W x 21.5D x 34H	5045	5695
505-0130	30W x 21.5D x 34H	5145	5845
505-0136	36W x 21.5D x 34H	5245	5945
505-0042	42W x 21.5D x 34H	5395	6045

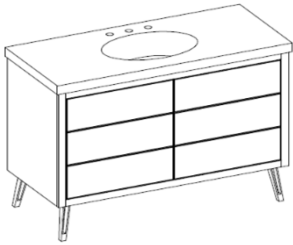


02 Configuration

Double Sink
 Top drawers split for plumbing
 Middle drawers split for plumbing

Space for undermount sink is 5.25"
 Bottom drawers scooped for ptrap

Item#	Without Top	Brass/Steel Finishes	
		A	B
505-0248	48W x 21.5D x 34H	7895	8895
505-0260	60W x 21.5D x 34H	8095	9145
505-0266	66W x 21.5D x 34H	8295	9395
505-0272	72W x 21.5D x 34H	8395	9545



05 Configuration

Single Sink Centered

All drawers are full drawers

4 3/4" blind between drawers for drain

Space for undermount sink is 5.25"

Item#	Without Top	Brass/Steel Finishes	
		A	B
505-0536	36W x 21.5D x 34H	7445	8095
505-0542	42W x 21.5D x 34H	7495	8195
505-0548	48W x 21.5D x 34H	7545	8245
505-0560	60W x 21.5D x 34H	7745	8495
505-0572	72W x 21.5D x 34H	7945	8745



06 Configuration

Single Sink Centered

Top drawer under sink is split

Middle drawer under sink is split

Bottom drawer under sink is scooped

Space for undermount sink is 5.25"

Item#	Without Top	Brass/Steel Finishes	
		A	B
505-0648	48W x 21.5D x 34H	8395	9545
505-0660	60W x 21.5D x 34H	8595	9745
505-0672	72W x 21.5D x 34H	8795	9945



08 Configuration

Double Sink

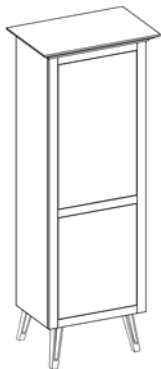
Top drawer under sink is split

Middle drawer under sink is split

Bottom drawer under sink is scooped

Space for undermount sink is 5.25"

Item#	Without Top	Brass/Steel Finishes	
		A	B
505-0860	60W x 21.5D x 34H	9395	10645
505-0866	66W x 21.5D x 34H	9495	10745
505-0872	72W x 21.5D x 34H	9595	10845



Linen Cabinet

*Measurements are without crown molding

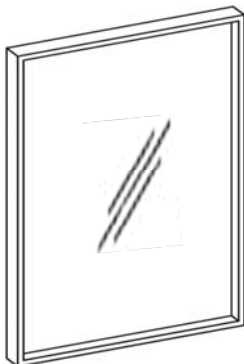
Includes 3 adjustable shelves in upper section

Includes 2 adjustable shelves in lower section

Hinge Left or Hinge Right

Hamper Option - \$350.00

Item#	Without Top	Brass/Steel Finishes	
		A	B
505-0924L	*22W x *15D x 78H	5195	5995
505-0924R	*22W x *15D x 78H	5195	5995



1/2" x 2" Frame - Mirror

Item#	Size	Brass	Steel
600-M2-1630	16W x 2D x 30H	1595	1295
600-M2-2030	20W x 2D x 30H	1645	1345
600-M2-2430	24W x 2D x 30H	1695	1395
600-M2-3030	30W x 2D x 30H	1745	1445
600-M2-3630	36W x 2D x 30H	1795	1495
600-M2-1640	16W x 2D x 40H	1695	1395
600-M2-2040	20W x 2D x 40H	1745	1445
600-M2-2440	24W x 2D x 40H	1795	1495
600-M2-3040	30W x 2D x 40H	1845	1545
600-M2-3640	36W x 2D x 40H	1895	1595



605 Paxton

Features

Frame is Brass or Steel 1" Tubing
 Grain direction is Horizontal on front and sides
 Blum Legrabox full extension, soft close drawer runners
 Each piece made by hand and signed by the craftsman

18" compact depth available
 Pricing is same as standard 21 1/2" depth
 Add "COM" to item number

Space for Undermount Sink 6"H

Top Program Compatibility

Quartz - fully compatible w/ Roxy sink, 2.0 min other sinks
 Stone Top - fully compatible w/ Roxy sink, 2.5 min other sinks
 Guildstone - fully compatible
 Fenix - fully compatible
 Fireclay - fully compatible

Standard Installation

Waste to be placed 24"H above finished floor in line with sink placement of cabinet
 Supply lines to be placed 24"H above finished floor

Blocking between studs with a 2x6 is recommended.
 Once shimmed plumb and level, secure with 2.5" screws/lag bolts across the top and bottom of the cabinet.

How to Order

Add Metal finish code to Panel Finish code

Example
 30" Paxton in PSS Polished Stainless and B42 Granite Walnut

605-0130-PSS-B42

Brass Finish Options

BB Burnished Brass Waxed
 SB Satin Brass (lacquered)
 AB Antique Brass (lacquered)
 PN Polished Nickel (plated over brass)

Steel Finish Options

OC Oil Can (lacquered)
 PT Pewter (lacquered)
 PSS Polished Stainless Steel
 BSS Brushed Stainless Steel

C-Color - Matte

C40 White Fenix
 C41 Black Fenix
 C42 Efeso Gray Fenix
 C43 Londra Gray Fenix
 C44 Bromo Gray Fenix
 C46 Ottawa Beige Fenix
 *mc interiors are laminate

Custom Paint Colors

Matte Paint C+10%
 Glossy Paint C+20%
 Polished Lacquer D+10%

C-Color - High Gloss

C21 White Acrylic
 C22 Black Acrylic
 C26 Ivory Acrylic
 C28 Lunar Gray Acrylic
 C29 Graystone Acrylic
 C30 Slate Gray Acrylic
 C31 Iridium Silver Acrylic
 C32 Champagne Acrylic
 C33 Carbonite Acrylic
 *mc interiors are laminate

C-Tex - Texture

C1 Palissandro
 C2 Carbone
 C3 Oregon Pine
 C6 Rovero
 C7 Aspenor
 C8 Gretano
 C9 Ebrano
 C10 Cortado
 C11 Tyburn

B-Wood

B39 English Walnut
 B41 French Walnut
 B42 Granite Walnut
 B54 Cerused Oak
 B57 Milk Oak
 B58 Manhattan Oak
 B59 Chocolate Oak
 B60 White Oak
 B61 Black Oak

B-Exotic

B18 Rosewood
 B22 Black Limba
 B38 Quartered Walnut
 B40 Natural Walnut
 B47 Gray Reclaimed Oak
 B48 Clear Reclaimed Oak
 B49 Natural Reclaimed Oak

D-Auto - Automotive

D1 White Lacquer
 D2 Black Lacquer
 D10 Escalade Pearl
 D11 Ocean Metallic
 D13 Grey Metallic
 D14 White Pearl
 D16 Cappuccino
 D17 Sea Serpent



30" with GS 2.0

01 Configuration

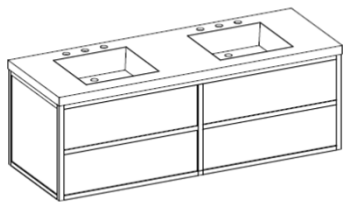
Single Sink Centered

Top drawer is split

Bottom drawer is scooped

Space for Undermount Sink is 6"H

Item#	Without Top	Brass Finishes			Steel Finishes		
		B	C	D	B	C	D
605-0124	24W x 21.5D x 22H	7345	6895	7945	4895	4445	5495
605-0130	30W x 21.5D x 22H	7445	6995	8045	4995	4545	5595
605-0136	36W x 21.5D x 22H	7555	7095	8145	5095	4645	5695
605-0142	42W x 21.5D x 22H	7655	7195	8245	5195	4745	5795



60" with GS 2.0

02 Configuration

Double Sink

Top drawers are split

Bottom drawers are split

Space for Undermount Sink is 6"H

Item#	Without Top	Brass Finishes			Steel Finishes		
		B	C	D	B	C	D
605-0248	48W x 21.5D x 22H	11595	10895	12695	7995	7295	9095
605-0260	60W x 21.5D x 22H	11795	11095	12895	8195	7495	9295
605-0272	72W x 21.5D x 22H	11895	11195	12995	8395	7695	9495



60" with GS 2.0

03 Configuration

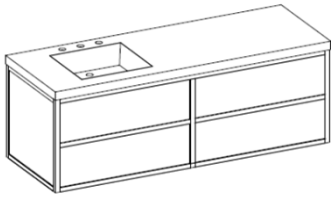
Single Sink on the Right

Top drawer under sink is split

Bottom drawer under sink is scooped

Space for Undermount Sink is 6"H

Item#	Without Top	Brass Finishes			Steel Finishes		
		B	C	D	B	C	D
605-0348	48W x 21.5D x 22H	11245	10545	12345	7645	6945	8745
605-0360	60W x 21.5D x 22H	11445	10745	12545	7845	7145	8945
605-0372	72W x 21.5D x 22H	11545	10845	12645	8045	7345	9145



60" with GS 2.0

04 Configuration

Single Sink on the Left

Top drawer under sink is split

Bottom drawer under sink is scooped

Space for Undermount Sink is 6"H

Item#	Without Top	Brass Finishes			Steel Finishes		
		B	C	D	B	C	D
605-0448	48W x 21.5D x 22H	11245	10545	12345	7645	6945	8745
605-0460	60W x 21.5D x 22H	11445	10745	12545	7845	7145	8945
605-0472	72W x 21.5D x 22H	11545	10845	12645	8045	7345	9145

05 Configuration

Single Sink Centered

All drawers are full drawers

4 3/4" Blind in the Middle, Between Drawers for Drain

Space for Undermount Sink is 6"H



48" with GS 2.0

Item#	Without Top	Brass Finishes			Steel Finishes		
		B	C	D	B	C	D
605-0536	36W x 21.5D x 22H	11395	10695	12495	7795	7095	8895
605-0542	42W x 21.5D x 22H	11495	10795	12595	7895	7195	8995
605-0548	48W x 21.5D x 22H	11595	10895	12695	7995	7295	9095
605-0554	54W x 21.5D x 22H	11695	10995	12795	8095	7395	9195
605-0560	60W x 21.5D x 22H	11795	11095	12895	8195	7495	9295
605-0572	72W x 21.5D x 22H	11895	11195	12995	8395	7695	9495

06 Configuration

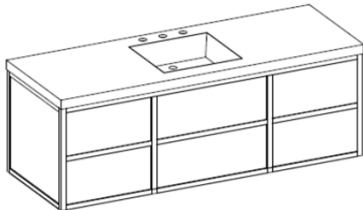
Single Sink Centered

Top drawer under sink is split

Bottom drawer under sink is scooped

60"W has 24"W sink drawers

Space for Undermount Sink is 6"H



60" with GS 2.0

Item#	Without Top	Brass Finishes			Steel Finishes		
		B	C	D	B	C	D
605-0660	60W x 21.5D x 22H	12495	11695	13695	8595	7795	9795
605-0672	72W x 21.5D x 22H	12695	11895	13895	8795	7995	9995

08 Configuration

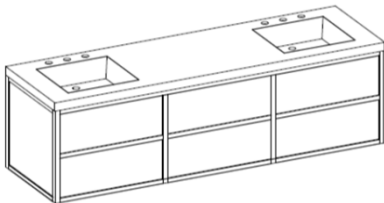
Double Sink

Top drawer under sink is split

Bottom drawer under sink is scooped

60" has 24"W sink cabinets

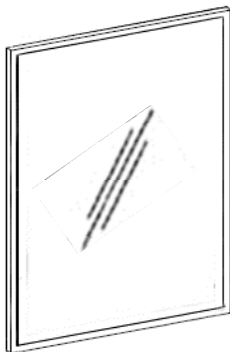
Space for Undermount Sink is 6"H



72" with GS 2.0

Item#	Without Top	Brass Finishes			Steel Finishes		
		B	C	D	B	C	D
605-0860	60W x 21.5D x 22H	12495	11695	13695	8595	7795	9795
605-0872	72W x 21.5D x 22H	12695	11895	13895	8795	7995	9995

1" Frame - Mirror



Item#	Size	Brass Finishes	Steel Finishes
600-M1-1630	16W x 1D x 30H	1595	895
600-M1-2030	20W x 1D x 30H	1645	945
600-M1-2430	24W x 1D x 30H	1695	995
600-M1-3030	30W x 1D x 30H	1745	1045
600-M1-3630	36W x 1D x 30H	1795	1095
600-M1-1640	16W x 1D x 40H	1695	995
600-M1-2040	20W x 1D x 40H	1745	1045
600-M1-2440	24W x 1D x 40H	1795	1095
600-M1-3040	30W x 1D x 40H	1845	1145
600-M1-3640	36W x 1D x 40H	1895	1195



621 Avento

Features

Frame is Solid Brass Tubing or Solid Steel 1/2" x 2"
 This design features Substructure construction
 Includes short upper drawer behind drawer face
 Includes Integrated Finger Pull in matching metal
 Grain direction for panels is Horizontal on front and sides
 Blum Legrabox full extension, soft close drawer runners
 Each piece made by hand and signed by the craftsman

18" compact depth available
 Pricing is same as standard 21 1/2" depth
 Add "COM" to item number

How to Order

Add Metal finish code to Panel Finish code

Example
 30" Avento in SB Satin Brass and D17 Sea Serpent
621-0130-SB-D17

C-Color - Matte

C40 White Fenix
 C41 Black Fenix
 C42 Efeso Gray Fenix
 C43 Londra Gray Fenix
 C44 Bromo Gray Fenix
 C46 Ottawa Beige Fenix
 *mc interiors are laminate

Custom Paint Colors

Matte Paint C+10%
 Glossy Paint C+20%
 Polished Lacquer D+10%

C-Color - High Gloss

C21 White Acrylic
 C22 Black Acrylic
 C26 Ivory Acrylic
 C28 Lunar Gray Acrylic
 C29 Graystone Acrylic
 C30 Slate Gray Acrylic
 C31 Iridium Silver Acrylic
 C32 Champagne Acrylic
 C33 Carbonite Acrylic
 *mc interiors are laminate

C-Tex - Texture

C1 Palissandro
 C2 Carbone
 C3 Oregon Pine
 C6 Rovero
 C7 Aspenor
 C8 Gretano
 C9 Ebrano
 C10 Cortado
 C11 Tyburn

B-Wood

B39 English Walnut
 B41 French Walnut
 B42 Granite Walnut
 B54 Cerused Oak
 B57 Milk Oak
 B58 Manhattan Oak
 B59 Chocolate Oak
 B60 White Oak
 B61 Black Oak

B-Exotic

B18 Rosewood
 B22 Black Limba
 B38 Quartered Walnut
 B40 Natural Walnut
 B47 Gray Reclaimed Oak
 B48 Clear Reclaimed Oak
 B49 Natural Reclaimed Oak

D-Auto - Automotive

D1 White Lacquer
 D2 Black Lacquer
 D10 Escalade Pearl
 D11 Ocean Metallic
 D13 Grey Metallic
 D14 White Pearl
 D16 Cappuccino
 D17 Sea Serpent

Space for Undermount Sink 5.75"H

Top Program Compatibility

Quartz - fully compatible w/ Roxy sink, 2.0 min other sinks
 Stone Top - fully compatible w/ Roxy sink, 2.5 min other sinks
 Guildstone - fully compatible
 Fenix - fully compatible
 Fireclay - fully compatible

Standard Installation

For standard 36"H to top of countertop:
 Waste to be placed 22"H above finished floor in line with sink placement of cabinet.
 Supply lines to be placed 22"H above finished floor

Blocking between studs with a 2x6 is recommended.
 Once shimmed plumb and level, secure with 2.5" screws/lag bolts across the top and bottom of cabinet.

Brass Finish Options

BB Burnished Brass Waxed
 SB Satin Brass (lacquered)
 AB Antique Brass (lacquered)
 PN Polished Nickel (plated over brass)

Steel Finish Options

OC Oil Can (lacquered)
 PT Pewter (lacquered)
 PSS Polished Stainless Steel
 BSS Brushed Stainless Steel



30" with GS 2.0

01 Configuration

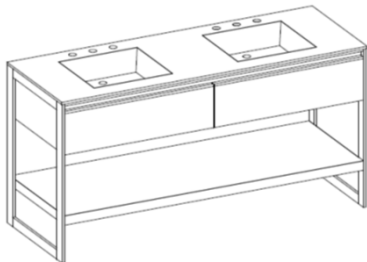
Single Sink Centered

Space for Undermount Sink is 5 3/4"H

Drawer is split

Item#	Without Top	Brass Finishes		
		B	C	D
621-0124	24W x 21.5D x 34H	7095	6395	8045
621-0130	30W x 21.5D x 34H	7195	6545	8195
621-0136	36W x 21.5D x 34H	7345	6645	8345
621-0142	42W x 21.5D x 34H	7445	6745	8545

Steel Finishes		
B	C	D
5745	5045	6695
5845	5195	6845
5995	5295	6995
6095	5395	7195



60" with GS 2.0

02 Configuration

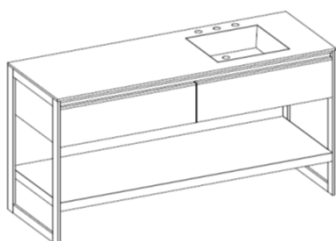
Double Sink

Space for Undermount Sink is 5 3/4"H

Drawers are split for plumbing

Item#	Without Top	Brass Finishes		
		B	C	D
621-0248	48W x 21.5D x 34H	10045	8845	11795
621-0260	60W x 21.5D x 34H	10345	9045	12095
621-0272	72W x 21.5D x 34H	10545	9245	12395

Steel Finishes		
B	C	D
8695	7495	10445
8995	7695	10745
9195	7895	11045



60" with GS 0.5

03 Configuration

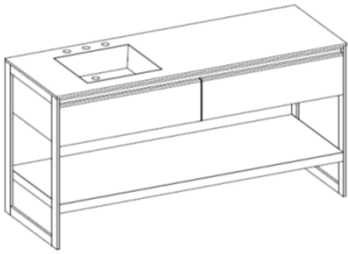
Single Sink on the Right

Space for Undermount Sink is 5 3/4"H

Drawer under sink is split

Item#	Without Top	Brass Finishes		
		B	C	D
621-0348	48W x 21.5D x 34H	9695	8545	11295
621-0360	60W x 21.5D x 34H	9895	8745	11645
621-0372	72W x 21.5D x 34H	10145	8945	11945

Steel Finishes		
B	C	D
8345	7195	9945
8545	7395	10295
8795	7595	10595



48" with GS 0.5

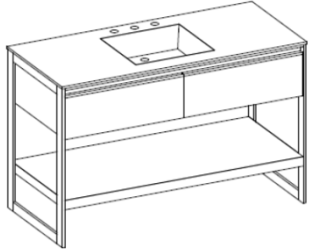
04 Configuration

Single Sink on the Left
Drawer under sink is split

Space for Undermount Sink is 5 3/4"H

Item#	Without Top	Brass Finishes		
		B	C	D
621-0448	48W x 21.5D x 34H	9695	8545	11295
621-0460	60W x 21.5D x 34H	9895	8745	11645
621-0472	72W x 21.5D x 34H	10145	8945	11945

Steel Finishes		
B	C	D
8345	7195	9945
91345	7395	10295
8795	7595	10595



60" with GS 0.5

05 Configuration

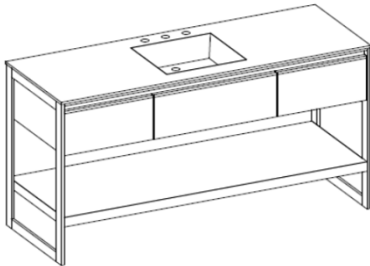
Single Sink Centered
Both drawers are full drawers

4 3/4" Blind in the Middle, Between Drawers for Drain

Space for Undermount Sink is 5 3/4"H

Item#	Without Top	Brass Finishes		
		B	C	D
621-0542	42W x 21.5D x 34H	10145	8945	11945
621-0548	48W x 21.5D x 34H	10345	9045	12095
621-0554	54W x 21.5D x 34H	10445	9145	12245
621-0560	60W x 21.5D x 34H	10545	9245	12395
621-0572	72W x 21.5D x 34H	10795	9495	12745

Steel Finishes		
B	C	D
8795	7595	10595
8995	7695	10745
9095	7795	10895
9195	7895	11045
9445	8145	11395



60" with GS 2.0

06 Configuration

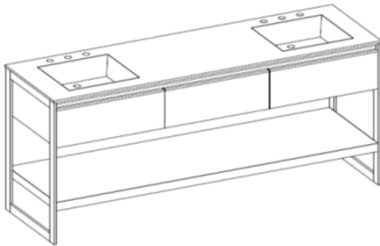
Single Sink Centered
Drawer under sink is split

60" has 24"W Sink Cabinets

Space for Undermount Sink is 5 3/4"H

Item#	Without Top	Brass Finishes		
		B	C	D
621-0660	60W x 21.5D x 34H	11395	9945	13445
621-0672	72W x 21.5D x 34H	11645	10195	13795

Steel Finishes		
B	C	D
9995	8545	12045
10245	8795	12395



72" with GS 2.0

08 Configuration

Double Sink
Drawers under sinks are split

60" has 24"W Sink Cabinets

Space for Undermount Sink is 5 3/4"H

Item#	Without Top	Brass Finishes		
		B	C	D
621-0860	60W x 21.5D x 34H	12945	11245	15495
621-0872	72W x 21.5D x 34H	13145	11445	15695

Steel Finishes		
B	C	D
11545	9845	14095
11745	10045	14295



1/2"x 2" Frame - Mirror

Item#	Size	Brass	Steel
600-M2-1630	16W x 2D x 30H	1595	1295
600-M2-2030	20W x 2D x 30H	1645	1345
600-M2-2430	24W x 2D x 30H	1695	1395
600-M2-3030	30W x 2D x 30H	1745	1445
600-M2-3630	36W x 2D x 30H	1795	1495
600-M2-1640	16W x 2D x 40H	1695	1395
600-M2-2040	20W x 2D x 40H	1745	1445
600-M2-2440	24W x 2D x 40H	1795	1495
600-M2-3040	30W x 2D x 40H	1845	1545
600-M2-3640	36W x 2D x 40H	1895	1595

This design is not available over 72" without adding additional vertical supports