





For decades, the founders of Alfresco have been manufacturing commercial kitchen equipment for many of the nation's finest restaurants and hotels. Alfresco Open-Air Culinary Systems was launched, offering a whole new level of quality in luxury residential appliances. This would be the most complete line of restaurant-inspired luxury outdoor kitchen appliances, utilizing the same manufacturing methodologies used in commercial restaurant equipment.

Alfresco appliances will make any professional chef feel right at home, and will inspire anyone who wishes to produce culinary creations like a pro. Unparalleled quality, workmanship, performance and design combined with constant innovation have been the driving force in making Alfresco the most distinctive and complete line of outdoor kitchen appliances available today. All Alfresco appliances are proudly built from scratch in City of Industry, California - U.S.A.

TABLE OF CONTENTS

	Page
Alfresco Grills	
Features & Benefits	4
Built-In Grills	7
Cart Grills	13
Alfresco Grill Accessories	22
Drop In Grill Accesories	23
Versa Power	24
Side Burners	26
Versa Sink	27
Garnish Rail & Plating Station	29
Trash Centers & Accessories	29
Doors & Drawers	30
Dry Storage Pantries	31
Refrigeration & Cooling	32
Food Warmers	34
Wind Guards	34
Alfresco Pizza Ovens	35
Alfresco Design Services	37
Artisan Grills	39
Features & Benefits	40
Built-In and Cart Grills	42
Artisan Grill Accessories	47
Warranty	50
Terms and Conditions	54

ALFRESCO GRILL FEATURES AND BENEFITS



Exclusive Heat Delivery System

Delivers evenly distributed extreme high -heat to the cooking surface, and consists of special 18SR burners

- 27,500 BTUs
- 18SR (Scaling and Corrosion Resistant) made from titanium and stainless steel
- Exclusive design: Dual Rows of clean-combusting, double-lanced ports on three sides, plus crossover tube in front delivering optimal flame distribution
- Lifetime warranty



Sear Zone™

- Exclusive 1500° Infrared Technology
- 27,500 BTU Infrared Burner available on all LXE grills with 100% combusting ceramic surface for intense even heat and authentic steakhouse results
- Reaches 1500° in four minutes and cooks 50% faster with virtually no flare-ups
- Special “V-Shaped” flavorizer cooking grate over Sear Zone burner captures the natural juices, fats, and flavors, then caramelizes them to the food for delectable mouthwatering flavor



Integrated, Wood Smoker & Herb Infusion System

Dedicated 5,000 BTU stainless steel burner. Exclusive cold smoke capabilities. Drawer holds large chunks of wood, and linear defusing vents naturally eject smoke at 200° to food zone.



Exclusive Hood-Assist System

Unique integrated and hidden spiral torsion system made of non-corrosive stainless steel for many years of use. Handle spins smoothly in nickel-plated end caps for optimal comfort.



Exclusive Hidden & Integrated 120lb. Torque Mega Rotisserie Motor

This unique chain-driven whisper quiet system turns food at a smooth and consistent speed no matter how many pounds. No counter balance required. Produces hassle-free delicious rotissed foods. Smoketiss™ using the smoke and herb infusion system.



Stainless Steel Cooking Grates

Over briquette and “U” burner sections. Heavy duty ³/₈” round stainless steel cooking grates have a special nonstick electro-polished finish.



Precision Control Panel Lighting

All new LED front panel lighting projects rich amber beams of light exactly where you need them.



Refractive Ceramic 5-Way Heat Distributing Briquettes

Eliminate hot and cold spots making the effective grilling area 100% of the grilling surface. A special pyramid shape with a flat top and heat-holding cavity on underside evenly delivers intense heat to the cooking surface. Radiant tray locks briquettes in place. Turn tray over and fire burners on high with lid closed to self-clean.



Adjustable Food Warming and Grilling Rack

The three-position adjustable warming rack stores up and out of the way when rotisserie. Ideal for above-grilling-surface holding and cooking.



Fit and Finish

With hand polished accents, uniquely clean lines and all helic-arc welded seams, the beauty and the quality are in the details.



Flush Inset Rotisserie

All Alfresco grills come with a flush-mounted 1500° rear ceramic infrared rotisserie burner.



Halogen Work Lights

Integrated high-Intensity Halogen Work Lights angle slightly toward the center for bright, even illumination. Light lens is easily removable without the use of tools for easily changing bulbs, and cleaning.



Attractive Nickel-Plated Ergonomically Designed Control Knobs and Bezels

The all new grill knobs have been redesigned with precision touch in mind.



Made In The U.S.A.

Made from all commercial-grade 304, 18-8 stainless steel, all helic-arc hand-welded seams with no mechanical fasteners.



Exclusive Heat Protected Wiring

Electrical wires are each encapsulated their full length with a 600° heat-resistance silicone sleeve, and electric connectors are protected with a silicone boot of same heat resistance silicone.



Exclusive Control Panel Air Cooling Curtain

A special air-cooling plenum blasts a curtain of cool air that naturally flows up between the front control panel and firebox keeping front panel and bullnose safely cool to touch. This also protects all the electronics.



Newly Redesigned Controls

Stainless Steel push button ignition, lighting, and rotisserie, controls are ergonomically integrated into the front control panel.



Free Grill Cover

No charge grill cover shipped with each Alfresco Grill.



Full Two Year Warranty

The Alfresco Grill Warranty covers all parts and labor for 2 years from date of purchase.



CREATE THE ALFRESCO OUTDOOR KITCHEN OF YOUR DREAMS, AND LUXURIATE IN THE LIFESTYLE.

ALFRESCO BUILT-IN GRILLS



ALFRESCO 30" BUILT-IN GRILL ALXE-30

Features

- Two 18-SR Stainless Steel Main Burners Producing 55,000 BTUs
- Integrated Rotisserie System with Built-In Motor and 15,000 BTU Infrared Burner
- Smoker System with 5,000 BTU Dedicated Burner and Drawer for Wood Chips
- 542 sq. in. Actual Grilling Area
- 3-Position Warming Rack Stores Up and Out of the Way when Rotissing
- Dual Integrated High-Intensity Halogen Work Lights
- User-Friendly Push-Button Ignition with Sealed 110v AC Power Source
- Optional Infrared Sear Zone™
- Grill Cover Included
- 2 Year Full Warranty



MODEL	DESCRIPTION	MAP
ALXE-30-LP	30" Built-In Grill, 2 Burner, Rotis, LP	\$ 3,839
ALXE-30-NG	30" Built-In Grill, 2 Burner, Rotis, NG	\$ 3,839
ALXE-30SZ-LP	30" Built-In Grill, 1 Burner, Rotis, Sear Zone, LP	\$ 3,979
ALXE-30SZ-NG	30" Built-In Grill, 1 Burner, Rotis, Sear Zone, NG	\$ 3,979

OPTIONS AND ACCESSORIES

MODEL	DESCRIPTION	MAP
AIJ-30	Insulated Jacket for 30" Grill	\$ 599
XE-30C	Standard Cart for 30" Grill	\$ 1,099
AGV-30	Vinyl Cover for 30" Built-In Grill - Replacement	\$ 89
AWS-30	Wind Guard for 30" Grill	\$ 325

ALFRESCO 36" BUILT-IN GRILL ALXE-36



Features

- Three 18-SR Stainless Steel Main Burners Producing 82,500 BTUs
- Integrated Rotisserie System with Built-In Motor and 18,500 BTU Infrared Burner
- Smoker System with 5,000 BTU Dedicated Burner and Drawer for Wood Chlps
- 660 sq. in. Actual Grilling Area
- 3-Position Warming Rack Stores Up and Out of the Way when Rotissing
- Dual Integrated High Intensity Halogen Work Lights
- User-Friendly Push-Button Ignition with Sealed 110v AC Power Source
- Optional Infrared Sear Zone™
- Grill Cover Included
- 2 Year Full Warranty

MODEL	DESCRIPTION	MAP
ALXE-36-LP	36" Built-In Grill, 3 Burner, Rotis, LP	\$ 4,999
ALXE-36-NG	36" Built-In Grill, 3 Burner, Rotis, NG	\$ 4,999
ALXE-36SZ-LP	36" Built-In Grill, 2 Burner, Rotis, Sear Zone, LP	\$ 5,229
ALXE-36SZ-NG	36" Built-In Grill, 2 Burner, Rotis, Sear Zone, NG	\$ 5,229

OPTIONS AND ACCESSORIES

MODEL	DESCRIPTION	MAP
XE-36AG	Insert Accesory Grate for 36" Grill	\$ 50
AIC-POD	Indirect Roasting Pod	\$ 339
AG-SF	Grill Mounted Steamer/Fryer	\$ 529
SFI-POD	Solid Fuel Insert	\$ 619
AGSQ-G	Commercial Griddle	\$ 339
AIJ-36	Insulated Jacket for 36" Grill	\$ 639
XE-36C	Standard Cart for 36" Grill	\$ 1,399
AGV-36	Vinyl Cover for 36" Built-In Grill - Replacement	\$ 109
AWS-36	Wind Guard for 36" Grill	\$ 365

ALFRESCO 42" BUILT-IN GRILL

ALXE-42

Features

- Three 18-SR Stainless Steel Main Burners Producing 82,500 BTUs
- Integrated Rotisserie System with Built-In Motor and Dual 18,500 BTU Infrared Burner
- Smoker System with 5,000 BTU Dedicated Burner and Drawer for Wood Chips
- 770 sq. in. Actual Grilling Area
- 3-Position Warming Rack Stores Up and Out of the Way when Rotissing
- Dual Integrated High-Intensity Halogen Work Lights
- User-Friendly Push-Button Ignition with Sealed 110v AC Power Source
- Optional Infrared Sear Zone™
- Grill Cover Included
- 2 Year Full Warranty



MODEL	DESCRIPTION	MAP
ALXE-42-LP	42" Built-In Grill, 3 Burner, Rotis, LP	\$ 5,399
ALXE-42-NG	42" Built-In Grill, 3 Burner, Rotis, NG	\$ 5,399
ALXE-42SZ-LP	42" Built-In Grill, 2 Burner, Rotis, Sear Zone, LP	\$ 5,699
ALXE-42SZ-NG	42" Built-In Grill, 2 Burner, Rotis, Sear Zone, NG	\$ 5,699

OPTIONS AND ACCESSORIES

MODEL	DESCRIPTION	MAP
AIC-POD	Indirect Roasting Pod	\$ 339
AG-SF	Grill Mounted Steamer/Fryer	\$ 529
SFI-POD	Solid Fuel Insert	\$ 619
AGSQ-G	Commercial Griddle	\$ 339
AIJ-42	Insulated Jacket for 42" Grill	\$ 669
XE-42C	Standard Cart for 42" Grill	\$ 1,649
XE-42CD	Deluxe Cart for 42" Grill	\$ 2,249
AGV-42	Vinyl Cover for 42" Grill - Replacement	\$ 109
AWS-42	Wind Guard for 42" Grill	\$ 407

ALFRESCO 56" BUILT-IN DELUXE GRILL ALXE-56



Features

- Three 18-SR Stainless Steel Main Burners Producing 82,500 BTUs
- Integrated Rotisserie System with Built-In Motor and 18,500 BTU Infrared Burner
- Smoker System with 5,000 BTU Dedicated Burner and Drawer for Wood Chips
- 770 sq. in. Actual Grilling Area
- 3-Position Warming Rack Stores Up and Out of the Way when Rotissing
- Dual Integrated 20,000 BTU Side Burner with Recessed, Sealed Top and Stainless Steel Cover
- User-Friendly Push-Button Ignition with Sealed 110v AC Power Source
- Optional Infrared Sear Zone™
- Grill Cover Included
- 2 Year Full Warranty

MODEL	DESCRIPTION	MAP
ALXE-56-LP	56" Built-In Grill, 3 Burner, Rotis, LP	\$ 6,599
ALXE-56-NG	56" Built-In Grill, 3 Burner, Rotis, NG	\$ 6,599
ALXE-56SZ-LP	56" Built-In Grill, 2 Burner, Rotis, Sear Zone, LP	\$ 6,999
ALXE-56SZ-NG	56" Built-In Grill, 2 Burner, Rotis, Sear Zone, NG	\$ 6,999

OPTIONS AND ACCESSORIES

MODEL	DESCRIPTION	MAP
AIC-POD	Indirect Roasting Pod	\$ 339
AG-SF	Grill Mounted Steamer/Fryer	\$ 529
SFI-POD	Solid Fuel Insert	\$ 619
AGSQ-G	Commercial Griddle	\$ 339
AIJ-56	Insulated Jacket for 56" Grill	\$ 729
XE-56C	Deluxe Cart for 56" Grill	\$ 2,579
AGV-56	Vinyl Cover for 56" Grill - Replacement	\$ 109
AWS-56	Wind Guard for 56" Built-In Grill	\$ 470

ALFRESCO 56" BUILT-IN ALL GRILL

ALXE-56BFG

Features

- Three 18-SR Stainless Steel Main Burners Producing 82,500 BTUs
- Sear Zone with 27,500 BTU Ceramic Infrared Burner
- Integrated Rotisserie System with Built-In Motor and Dual 15,000 BTU Infrared Burners
- Smoker System with 5,000 BTU Dedicated Burner and Drawer for Wood Chips
- 998 sq. in. Actual Grilling Area
- 3-Position Warming Rack Stores Up and Out of the Way when Rotissing
- Dual Integrated High-Intensity Halogen Work Lights
- User-Friendly Push-Button Ignition with Sealed 110v AC Power Source
- Grill Cover Included
- 2 Year Full Warranty

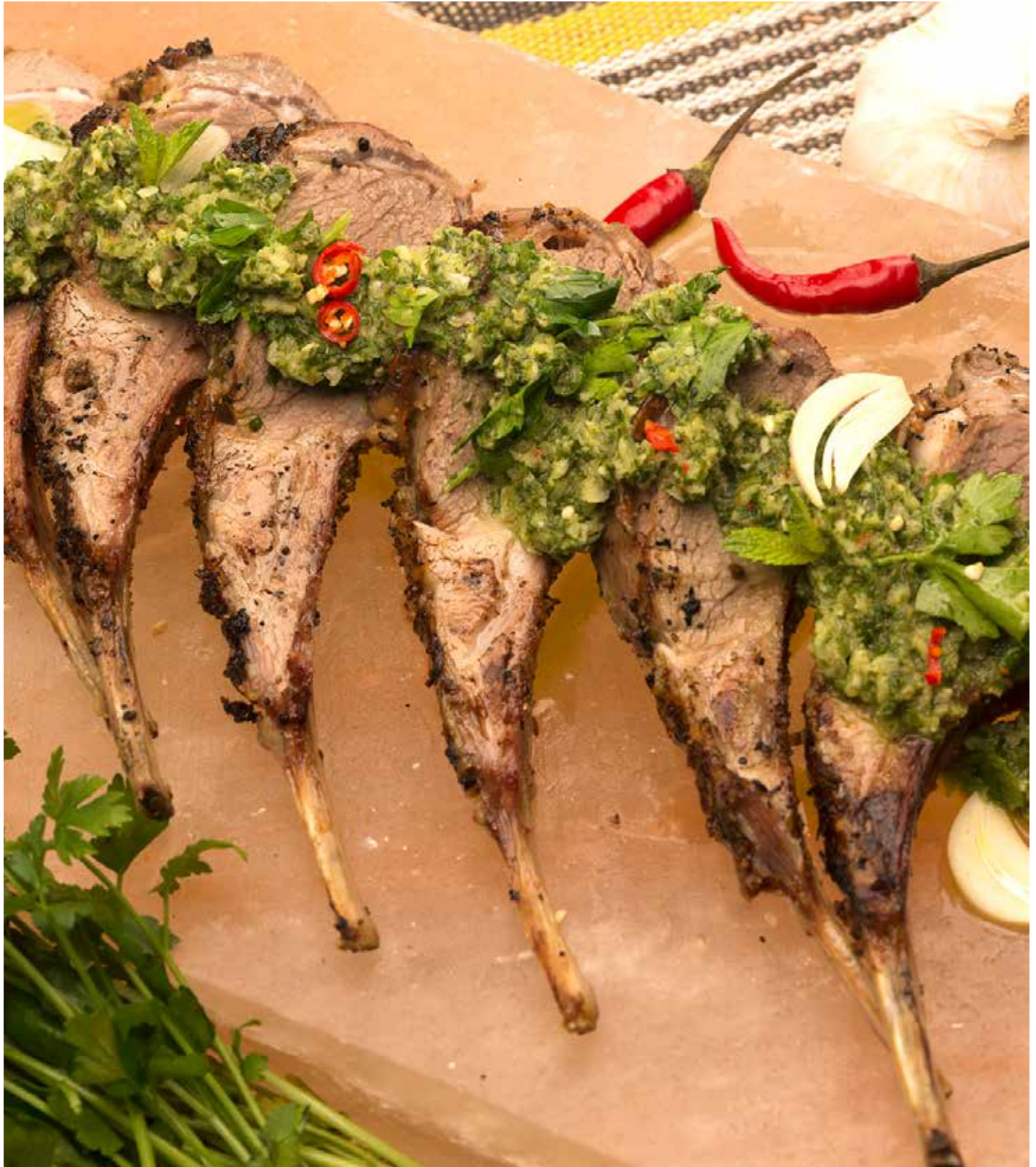


MODEL	DESCRIPTION	MAP
ALXE-56BFG-LP	56" Built-In Grill, 3 Burner, Rotis, Sear Zone, LP	\$ 7,599
ALXE-56BFG-NG	56" Built-In Grill, 3 Burner, Rotis, Sear Zone, NG	\$ 7,599

OPTIONS AND ACCESSORIES

MODEL	DESCRIPTION	MAP
AIC-POD	Indirect Roasting Pod	\$ 339
AG-SF	Grill Mounted Steamer/Fryer	\$ 529
SFI-POD	Solid Fuel Insert	\$ 619
AGSQ-G	Commercial Griddle	\$ 339
AIJ-56	Insulated Jacket for 56" Grill	\$ 729
AGV-56BFG	Jumbo Vinyl Cover for 56" Built-In All Grill - Replacement	\$ 119
AWS-56	Wind Guard for 56" Grill	\$ 470

ALFRESCO CART GRILLS



ALFRESCO 30" CART GRILL ALXE-30C

Features

- Two 18-SR Stainless Steel Main Burners Producing 55,000 BTUs
- Integrated Rotisserie System with Built-In Motor and 15,000 BTU Infrared Burner
- Smoker System with 5,000 BTU Dedicated Burner and Drawer for Wood Chips
- 542 sq. in. Actual Grilling Area
- 3-Position Warming Rack Stores Up and Out of the Way when Rotissing
- Dual Integrated High-Intensity Halogen Work Lights
- User-Friendly Push-Button Ignition with Sealed 110v AC Power Source
- Optional Infrared Sear Zone™
- Grill Cover Included
- 2 Year Full Warranty



MODEL	DESCRIPTION	MAP
ALXE-30C-LP	30" Cart Grill, 2 Burner, Rotis, Double Doors, LP	\$ 4,349
ALXE-30C-NG	30" Cart Grill, 2 Burner, Rotis, Double Doors, NG	\$ 4,349
ALXE-30SZC-LP	30" Cart Grill, 1 Burner, Rotis, Sear Zone, Double Doors, LP	\$ 4,499
ALXE-30SZC-NG	30" Cart Grill, 1 Burner, Rotis, Sear Zone, Double Doors, NG	\$ 4,499

OPTIONS AND ACCESSORIES

MODEL	DESCRIPTION	MAP
AXESB-2C-LP	Dual Side Burner for Cart, LP	\$ 1,399
AXESB-2C-NG	Dual Side Burner for Cart, NG	\$ 1,399
AIC-POD	Indirect Roasting Pod	\$ 339
AG-SF	Grill Mounted Steamer/Fryer	\$ 529
SFI-POD	Solid Fuel Insert	\$ 619
AGSQ-G	Commercial Griddle	\$ 339
AGV-30C	Vinyl Cover for 30" Grill - Replacement	\$ 109
AGV-30CSB	Vinyl Cover for 30" Cart Grill + Side Burner - Replacement	\$ 119
AWS-30	Wind Guard for 30" Grill	\$ 325

ALFRESCO 36" CART GRILL ALXE-36C



Features

- Three 18-SR Stainless Steel Main Burners Producing 82,500 BTUs
- Integrated Rotisserie System with Built-In Motor and 18,500 BTU Infrared Burner
- Smoker System with 5,000 BTU Dedicated Burner and Drawer for Wood Chips
- 660 sq. in. Actual Grilling Area
- 3-Position Warming Rack Stores Up and Out of the Way when Rotissing
- Dual Integrated High Intensity Halogen Work Lights
- User-Friendly Push-Button Ignition with Sealed 110v AC Power Source
- Optional Infrared Sear Zone™
- Grill Cover Included
- 2 Year Full Warranty

MODEL	DESCRIPTION	MAP
ALXE-36C-LP	36" Cart Grill, 3 Burner, Rotis, Double Doors, LP	\$ 6,499
ALXE-36CNG	36" Cart Grill, 3 Burner, Rotis, Double Doors, NG	\$ 6,499
ALXE-36SZC-LP	36" Cart Grill, 2 Burner, Rotis, Sear Zone, Double Doors, LP	\$ 6,549
ALXE-36SZC-NG	36" Cart Grill, 2 Burner, Rotis, Sear Zone, Double Doors, NG	\$ 6,549

OPTIONS AND ACCESSORIES

MODEL	DESCRIPTION	MAP
AXESB-2C-LP	Dual Side Burner for Cart, LP	\$ 1,399
AXESB-2C-NG	Dual Side Burner for Cart, NG	\$ 1,399
AIC-POD	Indirect Roasting Pod	\$ 339
AG-SF	Grill Mounted Steamer/Fryer	\$ 529
SFI-POD	Solid Fuel Insert	\$ 619
AGSQ-G	Commercial Griddle	\$ 339
AGV-36C	Vinyl Cover for 36" Cart Grill - Replacement	\$ 119
AGV-36CSB	Vinyl Cover for 36" Grill Cart + Side Burner - Replacement	\$ 129
AWS-36	Wind Guard for 36" Grill	\$ 365
XE-36AG	Insert Accessory Grate for 36" Grill	\$ 50

ALFRESCO 42" CART GRILL ALXE-42C

Features

- Three 18-SR Stainless Steel Main Burners Producing 82,500 BTUs
- Integrated Rotisserie System with Built-In Motor and Dual 18,500 BTU Infrared Burners
- Smoker System with 5,000 BTU Dedicated Burner and Drawer for Wood Chips
- 770 sq. in. Actual Grilling Area
- 3-Position Warming Rack Stores Up and Out of the Way when Rotissing
- Dual Integrated High-Intensity Halogen Work Lights
- User-Friendly Push-Button Ignition with Sealed 110v AC Power Source
- Optional Infrared Sear Zone™ and Refrigerated Base Cabinet (See Next Page)
- Grill Cover Included
- 2 Year Full Warranty



MODEL	DESCRIPTION	MAP
ALXE-42C-LP	42" Cart Grill, 3 Burner, Rotis, Double Doors, LP	\$ 6,999
ALXE-42C-NG	42" Cart Grill, 3 Burner, Rotis, Double Doors, NG	\$ 6,999
ALXE-42CD-LP	42" Cart Grill, 2 Burner, Rotis, Deluxe Cart, LP	\$ 7,099
ALXE-42CD-NG	42" Cart Grill, 2 Burner, Rotis, Deluxe Cart, NG	\$ 7,099
ALXE-42SZC-LP	42" Cart Grill, 3 Burner, Rotis, Sear Zone, Double Doors, LP	\$ 7,099
ALXE-42SZC-NG	42" Cart Grill, 3 Burner, Rotis, Sear Zone, Double Doors, NG	\$ 7,099
ALXE-42SZCD-LP	42" Cart Grill, 2 Burner, Rotis, Sear Zone, Deluxe Cart, LP	\$ 7,399
ALXE-42SZCD-NG	42" Cart Grill, 2 Burner, Rotis, Sear Zone, Deluxe Cart, NG	\$ 7,399

OPTIONS AND ACCESSORIES

MODEL	DESCRIPTION	MAP
AXESB-2C-LP	Dual Side Burner for Cart, LP	\$ 1,399
AXESB-2C-NG	Dual Side Burner for Cart, NG	\$ 1,399
AIC-POD	Indirect Roasting Pod	\$ 339
AG-SF	Grill Mounted Steamer/Fryer	\$ 529
SFI-POD	Solid Fuel Insert	\$ 619
AGSQ-G	Commercial Griddle	\$ 339
AGV-42C	Vinyl Cover for 42" Cart Grill - Replacement	\$ 119
AGV-42CSB	Vinyl Cover for 42" Cart Grill & Side Burner - Replacement	\$ 129
AWS-42	Wind Guard for 42" Grill	\$ 407

ALFRESCO 42" REFRIGERATED CART GRILL ALXE-42RFG



Features

- Three 18-SR Stainless Steel Main Burners Producing 82,500 BTUs
- Integrated Rotisserie System with Built-In Motor and Dual 18,500 BTU Infrared Burners
- Smoker System with 5,000 BTU Dedicated Burner and Drawer for Wood Chips
- 770 sq. in. Actual Grilling Area
- 3-Position Warming Rack Stores Up and Out of the Way when Rotissing
- Dual Integrated High-Intensity Halogen Work Lights
- User-Friendly Push-Button Ignition with Sealed 110v AC Power Source
- Optional Infrared Sear Zone™
- Grill Cover Included
- 2 Year Full Warranty

MODEL	DESCRIPTION	MAP
ALXE-42RFG-LP	42" Cart Grill, 3 Burner, Rotis, Single Door, Double Drawer, LP	\$ 11,199
ALXE-42RFG-NG	42" Cart Grill, 3 Burner, Rotis, Single Door, Double Drawer, NG	\$ 11,199
ALXE-42SZRFG-LP	42" Cart Grill, 2 Burner, Rotis, Single Door, Double Drawer, Sear Zone, LP	\$ 11,599
ALXE-42SZRFG-NG	42" Cart Grill, 2 Burner, Rotis, Single Door, Double Drawer, Sear Zone, NG	\$ 11,599

OPTIONS AND ACCESSORIES

MODEL	DESCRIPTION	MAP
AXESB-2C-LP	Dual Side Burner for Cart, LP	\$ 1,399
AXESB-2C-NG	Dual Side Burner for Cart, NG	\$ 1,399
AIC-POD	Indirect Roasting Pod	\$ 339
AG-SF	Grill Mounted Steamer/Fryer	\$ 529
SFI-POD	Solid Fuel Insert	\$ 619
AGSQ-G	Commercial Griddle	\$ 339
AGV-42C	Vinyl Cover for 42" Cart Grill - Replacement	\$ 119
AGV-42CSB	Vinyl Cover for 42" Cart Grill & Side Burner - Replacement	\$ 129
AWS-42	Wind Guard for 42" Grill	\$ 407

ALFRESCO 56" CART GRILL ALXE-56C

Features

- Three 18-SR Stainless Steel Main Burners Producing 82,500 BTUs
- Integrated Rotisserie System with Built-In Motor and 18,500 BTU Infrared Burner
- Smoker System with 5,000 BTU Dedicated Burner and Drawer for Wood Chips
- 770 sq. in. Actual Grilling Area
- 3-Position Warming Rack Stores Up and Out of the Way when Rotissing
- Dual Integrated High Intensity Halogen work Lights
- Dual Integrated 20,000 BTU Side Burner with Recessed, Sealed Top and Stainless Steel Cover
- User-Friendly Push-Button Ignition with Sealed 110v AC Power Source
- Cart Model Features Dual Storage Drawers
- Optional Infrared Sear Zone™ and Refrigerated Base Cabinet (See Page 20)
- Grill Cover Included
- 2 Year Full Warranty



MODEL	DESCRIPTION	MAP
ALXE-56C-LP	56" Cart Grill, 3 Burner, Side Burner, Rotis, Double Doors, Double Drawers, LP	\$ 8,999
ALXE-56C-NG	56" Cart Grill, 3 Burner, Side Burner, Rotis, Double Doors, Double Drawers, NG	\$ 8,999
ALXE-56SZC-LP	56" Cart Grill, 2 Burner, Side Burner, Rotis, Sear Zone, Double Doors, Double Drawers, LP	\$ 9,199
ALXE-56SZC-NG	56" Cart Grill, 2 Burner, Side Burner, Rotis, Sear Zone, Double Doors, Double Drawers, NG	\$ 9,199

OPTIONS AND ACCESSORIES

MODEL	DESCRIPTION	MAP
AIC-POD	Indirect Roasting Pod	\$ 339
AG-SF	Grill Mounted Steamer/Fryer	\$ 529
SFI-POD	Solid Fuel Insert	\$ 619
AGSQ-G	Commercial Griddle	\$ 339
AGV-56C	Vinyl Cover for 56" Cart Grill - Replacement	\$ 119
AWS-56	Wind Guard for 56" Grill	\$ 470

ALFRESCO 56" CART ALL GRILL ALXE-56BFG



Features

- Three 18-SR Stainless Steel Main Burners Producing 82,500 BTUs
- Sear Zone™ with 27,500 BTU Ceramic Infrared Burner
- Integrated Rotisserie System with Built-In Motor and Dual 15,000 BTU Infrared Burners
- Smoker System with 5,000 BTU Dedicated Burner and Drawer for Wood Chips
- 998 sq. in. Actual Grilling Area
- 3-Position Warming Rack Stores Up and Out of the Way when Rotissing
- Dual Integrated High-Intensity Halogen Work Lights
- User-Friendly Push-Button Ignition with Sealed 110v AC Power Source
- Cart Model Features Dual Storage Drawers
- Optional Refrigerated Base Cabinet (See Page 21)
- Grill Cover Included
- 2 Year Full Warranty

MODEL	DESCRIPTION	MAP
ALXE-56BFGC-LP	56" Cart Grill, 3 Burner, Rotis, Sear Zone, Double Doors, Double Drawers, LP	\$ 9,399
ALXE-56BFGC-NG	56" Cart Grill, 3 Burner, Rotis, Sear Zone, Double Doors, Double Drawers, NG	\$ 9,399

OPTIONS AND ACCESSORIES

MODEL	DESCRIPTION	MAP
AXESB-2C-LP	Dual Side Burner for Cart, LP	\$ 1,399
AXESB-2C-NG	Dual Side Burner for Cart, NG	\$ 1,399
AIC-POD	Indirect Roasting Pod	\$ 339
AG-SF	Grill Mounted Steamer/Fryer	\$ 529
SFI-POD	Solid Fuel Insert	\$ 619
AGSQ-G	Commercial Griddle	\$ 339
AGV-56BFGC	Vinyl Cover for 56" BFG Cart Grill - Replacement	\$ 119
AWS-56	Wind Guard for 56" Grill	\$ 470

ALFRESCO 56" REFRIGERATED CART GRILL ALXE-56R

Features

- Three 18-SR Stainless Steel Main Burners Producing 82,500 BTUs
- Sear Zone™ with 27,500 BTU Ceramic Infrared Burner
- Integrated Rotisserie System with Built-In Motor and 18,500 BTU Infrared Burner
- Smoker System with 5,000 BTU Dedicated Burner and Drawer for Wood Chips
- 770 sq. in. Actual Grilling Area
- 3-Position Warming Rack Stores Up and Out of the Way when Rotissing
- Dual Integrated High-Intensity Halogen Work Lights
- Dual Integrated 20,000 BTU Side Burner with Recessed, Sealed Top and Stainless Steel Cover
- User-Friendly Push-Button Ignition with Sealed 110v AC Power Source
- Cart Model Features Dual Storage Drawers
- Optional Infrared Sear Zone
- Grill Cover Included
- 2 Year Full Warranty



MODEL	DESCRIPTION	MAP
ALXE-56R-LP	56" Cart Grill, 3 Burner, Rotis, Single Door, Double Drawer, LP	\$ 12,899
ALXE-56R-NG	56" Cart Grill, 3 Burner, Rotis, Single Door, Double Drawer, NG	\$ 12,899
ALXE-56SZR-LP	56" Cart Grill, 2 Burner, Side Burner, Rotis, Double Door, Double Drawer, Sear Zone, LP	\$ 13,199
ALXE-56SZR-NG	56" Cart Grill, 2 Burner, Side Burner, Rotis, Double Door, Double Drawer, Sear Zone, NG	\$ 13,199

OPTIONS AND ACCESSORIES

MODEL	DESCRIPTION	MAP
AIC-POD	Indirect Roasting Pod	\$ 339
AG-SF	Grill Mounted Steamer/Fryer	\$ 529
SFI-POD	Solid Fuel Insert	\$ 619
AGSQ-G	Commercial Griddle	\$ 339
AGV-56C	Vinyl Cover for 56" Cart Grill - Replacement	\$ 119
AWS-56	Wind Guard for 56" Grill	\$ 470

ALFRESCO 56" REFRIGERATED CART GRILL ALXE-56BFGR



Features

- Three 18-SR Stainless Steel Main Burners Producing 82,500 BTUs
- Sear Zone™ with 27,500 BTU Ceramic Infrared Burner
- Integrated Rotisserie System with Built-In Motor and Dual 15,000 BTU Infrared Burners
- Smoker System with 5,000 BTU Dedicated Burner and Drawer for Wood Chips
- 998 sq. in. Actual Grilling Area
- 3-Position Warming Rack Stores Up and Out of the Way when Rotissing
- Dual Integrated High-Intensity Halogen Work Lights
- User-Friendly Push-Button Ignition with Sealed 110v AC Power Source
- Cart Model Features Dual Storage Drawers
- Grill Cover Included
- 2 Year Full Warranty

MODEL	DESCRIPTION	MAP
ALXE-56BFGR-LP	56" Cart Grill, 3 Burner, Rotis, Double Door, Double Drawer, Sear Zone, LP	\$ 14,399
ALXE-56BFGR-NG	56" Cart Grill, 3 Burner, Rotis, Double Door, Double Drawer, Sear Zone, NG	\$ 14,399

OPTIONS AND ACCESSORIES

MODEL	DESCRIPTION	MAP
AXESB-2C-LP	Dual Side Burner for Cart, LP	\$ 1,399
AXESB-2C-NG	Dual Side Burner for Cart, NG	\$ 1,399
AIC-POD	Indirect Roasting Pod	\$ 339
AG-SF	Grill Mounted Steamer/Fryer	\$ 529
SFI-POD	Solid Fuel Insert	\$ 619
AGSQ-G	Commercial Griddle	\$ 339
AGV-56BFGC	Vinyl Cover for 56" BFG Cart Grill - Replacement	\$ 119
AWS-56	Wind Guard for 56" Grill	\$ 470



CHOOSE YOUR ACCESSORIES

Alfresco offers the industry's largest selection of restaurant inspired grill-transforming outdoor kitchen accessories! Review the following pages to build your dream outdoor kitchen using a wide variety of Alfresco's complementary products.



DROP-IN GRILL ACCESORIES



INDIRECT ROASTING POD

Turn your grill into an amazing roasting oven with this accessory. Holds drip pan for self-basting, bringing out true slow-roast flavor. Use adjacent burners to create convection heat, or smoke-and-roast using the smoke and herb infusion system.



STEAMER | FRYER | PASTA COOKER

Drops into any Alfresco grill to blanch, steam, fry or boil.



SOLID FUEL INSERT

Transform your Alfresco gas grill into a wood-source cooking system. Simply drop this specially designed insert into the grill and fill with your favorite wood, lump charcoal, or other solid fuel for real wood-cooking flavor.



COMMERCIAL GRIDDLE

$\frac{3}{16}$ " Solid stainless steel plate with side and back splash that can be used with any Alfresco grill. Great for teppanyaki, fajitas, breakfast, or juicy burgers.

MODEL	DESCRIPTION	MAP
AIC-POD	Indirect Roasting Pod	\$ 339
AG-SF	Grill Mounted Steamer/Fryer	\$ 529
SFI-POD	Solid Fuel Insert	\$ 619
AGSQ-G	Commercial Griddle	\$ 339



VERSA POWER SYSTEM ACCESSORIES

Alfresco's new Versa Power™ cooker offers 400 to 65,000 BTUs of power for total heat control. The unique, specially designed super heavy-duty spider grate can handle from the smallest of saucepans, and up to a 100 quart stock pot. With numerous options to expand it's versatility, it is the perfect complementary appliance to complete your outdoor kitchen.

- Power and Versatility at your Fingertips with Numerous Options
- Unique Individually Controlled Double Burner System
- Brass Center Burner Adjusts from 400 to 20,000 BTUs
- Stainless Steel Outer Tube Burner Adjusts from 5,000 to 45,000 BTUs
- 5/16" Diameter Stainless Steel Spider Grate with Removable Trivet
- Ideal For Use as a European French Top
- The Perfect Complementary Appliance to Complete Your Outdoor Kitchen



MODEL	DESCRIPTION	WIDTH	MAP
AXEVP-LP	24" Versapower Cooker, LP	24"	\$ 1,769
AXEVP-NG	24" Versapower Cooker, NG	24"	\$ 1,769



MODEL	DESCRIPTION	WIDTH	MAP
AXEVP-C	24" Cart For Versapower Cooker	24"	\$ 829



MODEL	DESCRIPTION	WIDTH	MAP
AXEVP-TG	19" Teppanyaki Griddle	19"	\$ 729



MODEL	DESCRIPTION	WIDTH	MAP
AXEVP-WOK	22" Commercial Wok	22"	\$ 169



MODEL	DESCRIPTION	MAP
POT FAUCET	Double Joint Spout Pot Filler Faucet	\$ 349



MODEL	DESCRIPTION	MAP
AXEVP-T10	Adjustable Pot Filler Tower	\$ 899



MODEL	DESCRIPTION	MAP
AXEVP-COUNTER-SC	AGPVC - All Stainless Counter with Storage	\$ 3,199
AXEVP-LP TANK	14" LP Tank Attachment For AGVPC Counter	\$ 459



MODEL	DESCRIPTION	WIDTH	MAP
AXE-30DR	30" Versa Power Accessory Drawer	30"	\$ 999

SIDE BURNERS & ACCESSORIES



MODEL	DESCRIPTION	WIDTH	MAP
AXESB-2C-LP	Dual Side Burner for Cart, LP	14"	\$ 1,399
AXESB-2C-NG	Dual Side Burner for Cart, NG	14"	\$ 1,399
AXESB-2-LP	Built-In, Dual Side Burner, LP	14"	\$ 1,129
AXESB-2-NG	Built-In, Dual Side Burner, NG	14"	\$ 1,129



MODEL	DESCRIPTION	WIDTH	MAP
AXESZ-LP	Built-In, Dual SearZone Side Burner, LP	14"	\$ 1,349
AXESZ-NG	Built-In, Dual SearZone Side Burner, NG	14"	\$ 1,349



MODEL	DESCRIPTION	WIDTH	MAP
AG-WOK	14" Commercial Wok	14"	\$ 149
AG-WR	Wok Ring Adapter	14"	\$ 129



MODEL	DESCRIPTION	MAP
AGSB-G	Griddle for Side Burner	\$ 379



VERSA SINK SYSTEM AND ACCESSORIES

Versa sinks are one of the most versatile appliances for your outdoor kitchen. This modular system transforms from a sink to an ice bin to a beverage center to a wash-up center in a matter of seconds using components found in the following pages.

- 3" Basket Drain with Stopper
- Full Ice Capacity of 90 Pounds
- 1" Foam Insulation on All Sides and Bottom
- Wood Cutting Board
- Hang-On Front Bottle Speed Rail (4 Bottle Capacity)



MODEL	DESCRIPTION	WIDTH	MAP
AGBC-14 ¹	Versa 14" Sink & Beverage Center	14"	\$ 959
AGBC-24 ²	Versa 24" Sink & Beverage Center	24"	\$ 1,339

(1) Includes: 10" wide speed rail and sliding ice cover

(2) Includes: 14" wide speed rail, bottle opener, 4- bottle well with holder tray and sliding ice cover



MODEL	DESCRIPTION	WIDTH	MAP
AGBC-30	Versa 30" Sink	30"	\$ 1,179

MODEL	DESCRIPTION	WIDTH	MAP
BAR PACKAGE ¹	Bartending Package for 30" Sink	30"	\$ 799
SINK PACKAGE ²	Preparation Package for 30" Sink	30"	\$ 529

(1) Includes: 6" deep Ice Pan, Cutting Board, Speed Rail, 4 Bottle Wells, Blender Shelf, Bottle Opener with Cap Catcher and Towel Holder

(2) Includes: 4" Porforated Colander, Wood Cutting Board, Speed Rail and Towel Holder

VERSA SINK SYSTEM ACCESSORIES

MODEL	DESCRIPTION	WIDTH	MAP
BO	Bottle Opener, Cap Catcher & Towel Rack		\$ 129
SPR-LG	19" Speed Rail	19"	\$ 369
SPR-SM	14" Speed Rail	14"	\$ 289
TH	Paper Towel Holder		\$ 99
CT	Condiment Tray		\$ 129
DS	Display Shelf		\$ 99
HS-30	Serving Shelf		\$ 529
ICE PAN	6" Deep Ice Pan		\$ 99
MS	Middle Shelf (HS-30 or PR-30 Required)		\$ 99
PANTRY FAUCET	Commercial Dual Supply Pantry Faucet		\$ 479
PR-30	High Shelf w/ Pot Rack & Light		\$ 639
SC-30	Versa Sink S/S Cover		\$ 249
AVDT-30	Vinyl Cover for 30" Beverage Center		\$ 119
BS	Blender Shelf		\$ 149
BWELL	4 Bottle Well with Holder Tray		\$ 109
COLANDER	4" Deep Colander		\$ 99
TH	Paper Towel Holder		\$ 99
CT	Condiment Tray		\$ 129
DS	Display Shelf		\$ 99
HS-30	Serving Shelf		\$ 529
ICE PAN	6" Deep Ice Pan	6"	\$ 99
MS	Middle Shelf (HS-30 or PR-30 Required)		\$ 99
PANTRY FAUCET	Commercial Dual Supply Pantry Faucet		\$ 479
PR-30	High Shelf w/ Pot Rack & Light		\$ 639
SC-30	Versa Sink S/S Cover		\$ 249
AVDT-30	Vinyl Cover for 30" Beverage Center	30"	\$ 119



MODEL	DESCRIPTION	WIDTH	MAP
ASK-T	14" Prep & Hand Wash Sink	14"	\$ 1,099

GARNISH RAIL & PLATING STATION



MODEL	DESCRIPTION	WIDTH	MAP
APS-30P	30" Plating & Garnish Center with Food Pans	30"	\$ 1,449

TRASH CENTERS & ACCESSORIES



MODEL	DESCRIPTION	WIDTH	MAP
AXE-TC-SC	15" Trash Center Drawer	15"	\$ 749
AXE-TC2D-SC	18" Dual Trash Center Drawer, Deep	18"	\$ 1,179



MODEL	DESCRIPTION	WIDTH	MAP
APWC	10" Prep & Waste Chute	10"	\$ 319



MODEL	DESCRIPTION	WIDTH	MAP
AXE-TH	17" Towel Holder	17"	\$ 319



DOORS AND DRAWERS



MODEL	DESCRIPTION	WIDTH	MAP
AXE-17L	17" Single Access Door, Hinge Left	17"	\$ 269
AXE-17R	17" Single Access Door, Hinge Right	17"	\$ 269



MODEL	DESCRIPTION	WIDTH	MAP
AXE-23L	23" Single Access Door, Hinge Left	23"	\$ 369
AXE-23R	23" Single Access Door, Hinge Right	23"	\$ 369



MODEL	DESCRIPTION	WIDTH	MAP
AXE-30	30" Double Access Doors	30"	\$ 459
AXE-36	36" Double Access Doors	36"	\$ 519
AXE-42	42" Double Access Doors	42"	\$ 539



MODEL	DESCRIPTION	WIDTH	MAP
AXE-DDR-L-SC	17" Door, Drawer Combo, Hinge Left	17"	\$ 749
AXE-DDR-R-SC	17" Door, Drawer Combo, Hinge Right	17"	\$ 749



MODEL	DESCRIPTION	WIDTH	MAP
AXE-DDC-L-SC	32" Single Door, Triple Drawers, Hinge Left	32"	\$ 1,179
AXE-DDC-R-SC	32" Single Door, Triple Drawers, Hinge Right	32"	\$ 1,179



MODEL	DESCRIPTION	WIDTH	MAP
AXE-DTH-L-SC	17" Door, Towel Holder Combo, Hinge Left	17"	\$ 619
AXE-DTH-R-SC	17" Door, Towel Holder Combo, Hinge Right	17"	\$ 619



MODEL	DESCRIPTION	WIDTH	MAP
AXE-2DR-SC	17" Two-Tier Storage Drawers	17"	\$ 799



MODEL	DESCRIPTION	WIDTH	MAP
AXE-3DR-SC	17" Three-Tier Storage Drawers	17"	\$ 999



MODEL	DESCRIPTION	WIDTH	MAP
AXE-3DRTH-SC	17" Triple Drawer, Towel Holder Combo	17"	\$ 1,289



MODEL	DESCRIPTION	WIDTH	MAP
AXE-30DR-SC	30" Versa Power Accessory Drawer	30"	\$ 999

DRY STORAGE PANTRIES



MODEL	DESCRIPTION	WIDTH	MAP
AXEDSP-30H	30" High Profile Dry Storage Pantry, 33" H	30"	\$ 1,949
AXEDSP-30L	30" Low Profile Dry Storage Pantry, 21" H	30"	\$ 1,699



MODEL	DESCRIPTION	WIDTH	MAP
AXEDSP-42H	42" High Profile Dry Storage Pantry, 33" H	42"	\$ 2,299
AXEDSP-42L	42" Low Profile Dry Storage Pantry, 21" H	42"	\$ 1,999



REFRIGERATION & COOLING

VERSA CHILL FEATURES

- 1,200 BTU All-Weather Refrigeration System
- Insulated Tilt-Up and Removable Stainless Steel Cover
- Commercial Polyurethane Foam Insulation
- Three Removable NSF Food Pans
- Slideable Intermediate Stainless Steel Wire Shelf
- 1" Brass Drain for Easy Clean Up
- 101 Pound Ice Capacity



MODEL	DESCRIPTION	WIDTH	MAP
ARDI	24" Versa Chill Drop-In Counter Top Refrigerator	24"	\$ 3,969



MODEL	DESCRIPTION	WIDTH	MAP
ARDIC	24" Versa Chill Freestanding Cart Model Refrigerator	24"	\$ 4,829



MODEL	DESCRIPTION	WIDTH	MAP
URS-1XE	28" Single Door Refrigerator	28"	\$ 3,699
ACK	Caster Kit for URS-1XDE only		\$ 369
AKK	Keerator Kit for URS-1XE only		\$ 849

URS-1XE FEATURES

- Two Removable / Adjustable Stainless Steel Shelves
- Field-Reversible Door
- Converts to Keerator in Seconds
- Digital Control with Lighted Display
- Commercial Fan-Driven Fin Evaporator Cooling System
- 7.25 Cubic Feet



MODEL	DESCRIPTION	WIDTH	MAP
ARXE-42	42" 7.25 Cubic Ft. Under-Grill Refrigerator	42"	\$ 5,969
ARXE-42C	42" 7.25 Cubic Ft. Under Grill Refrigerator Cart Model	42"	\$ 6,349
ARXE-56C	56" 7.25 Cubic Ft. Under Grill Refrigerator Cart Model	56"	\$ 6,649

ARXE FEATURES

- All Stainless Steel Construction Inside and Out
- 1,000 BTU All-Weather Refrigeration System for Deep-Cooling
- Certified to NSF Standards
- Temperatures Uniquely Adjustable from 27° to 56°F
- Commercial Fan-Driven Fin Evaporator Cooling System
- Fully Front Ventilated
- Commercial Polyurethane Foam Insulation
- Flash Recovery System Quickly Cools Internal Temperature
- User-Friendly Digital Control with Lighted Display
- Door-Activated Internal Lighting



MODEL	DESCRIPTION	WIDTH	MAP
AXE-ID	26" Under Counter Ice Drawer & Bev Center Insulated	26"	\$ 1,799



MODEL	DESCRIPTION	WIDTH	MAP
ADT-42RXE	Refrigerated Bartender	42"	\$ 7,839

FOOD WARMERS



MODEL	DESCRIPTION	WIDTH	MAP
AXEFW	14" Built-In Food Warmer	14"	\$ 999
AXEFCW	14" Cart Mount Food Warmer	24"	\$ 1,189



MODEL	DESCRIPTION	WIDTH	MAP
AXEWD-30	30" Electric Warming Drawer	30"	\$ 1,749

WIND GUARDS

MODEL	DESCRIPTION	WIDTH	MAP
AWS-30	Wind Guard for 30" Grill	30"	\$ 325
AWS-36	Wind Guard for 36" Grill	36"	\$ 365
AWS-42	Wind Guard for 42" Grill	42"	\$ 407
AWS-56	Wind Guard for 56" Grill	56"	\$ 470



ALFRESCO PIZZA OVENS

Setting the standard for creative innovations in outdoor cooking equipment is what Alfresco has become known for. The Pizza Oven is an exciting new outdoor pizza and culinary oven engineered to commercial performance caliber. With a preheat time of only 15 minutes, the Pizza Oven is not only great for cooking pizza, but also is fabulous for baking, broiling, roasting and just about anything else you do in a regular oven.

However, it's faster and with much better results! Whether you're cooking 3-minute Neapolitan pizzas directly on the hearth, thick prime New York steaks pan seared in an iron skillet, herb and spice rubbed pork chops in a ceramic baking dish, skillet-sizzling shellfish, or zesty jalapeno corn bread in a ramekin, it can all be done in Alfresco's Pizza Oven.

- High-Tech 20,000 BTU High Heat Ceramic Infrared Hearth Burner
- 20,000 BTU Tube-Log Burner
- Alfresco Exclusive Air-Cooling Plenum keeps Control Panel Cool to the Touch
- 3/4" Thick High Quality Ceramic Slab Bottom and Ceiling for Even Intense Radiating Heat
- Complete 304 Heli-Arc Welded Stainless Steel Construction
- 456 Square Inches of Cooking Area
- Halogen Oven Light
- Removable Hinges and Doors
- Double Walled Removable Top
- 8 1/2" High Opening
- Counter Top Rear Exhaust

PIZZA OVEN & ACCESSORIES



MODEL	DESCRIPTION	WIDTH	MAP
AXE-PZA-BI-LP	30" Built-In Pizza Oven, LP	30"	\$ 7,299
AXE-PZA-BI-NG	30" Built-In Pizza Oven, NG	30"	\$ 7,299



MODEL	DESCRIPTION	WIDTH	MAP
AXE-PZA-LP	30" Countertop Pizza Oven, LP	30"	\$ 6,449
AXE-PZA-NG	30" Countertop Pizza Oven, NG	30"	\$ 6,449



MODEL	DESCRIPTION	WIDTH	MAP
AXE-PZA-CART	30" Pizza Oven Cart	30"	\$ 1,179



MODEL	DESCRIPTION	WIDTH	MAP
AXE-PZA-PPC	30" Deluxe Pizza Oven Prep Cart	30"	\$ 4,299

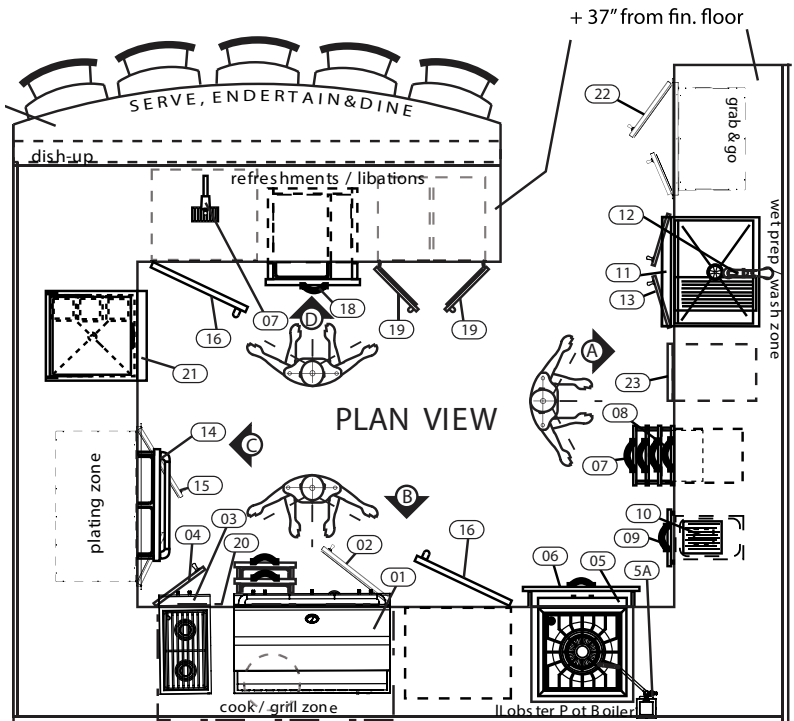
MODEL	DESCRIPTION	MAP
AXE-PP	Pizza Peel	\$ 59



MODEL	DESCRIPTION	WIDTH	MAP
APS-30PPC	30" Pizza Prep & Garnish Rail	30"	\$ 1,699

MAKE YOUR DREAM KITCHEN A REALITY!

Alfresco was started by a well-seasoned team of experts who, in addition to manufacturing high-quality commercial kitchen equipment for decades, also specialized in the design and space-planning of commercial kitchens



DESIGN SERVICE

"An efficient and well space-planned commercial kitchen can be the key to the success of an operation." The faster the food gets out of the kitchen, the quicker the tables can turn. Alfresco is happy to now offer this expertise to its customers by assisting in the design of your dream open-air culinary space. Our zone-design strategy is used in Alfresco designed kitchens.

This complimentary service is offered exclusively to Alfresco authorized dealers and their customers.

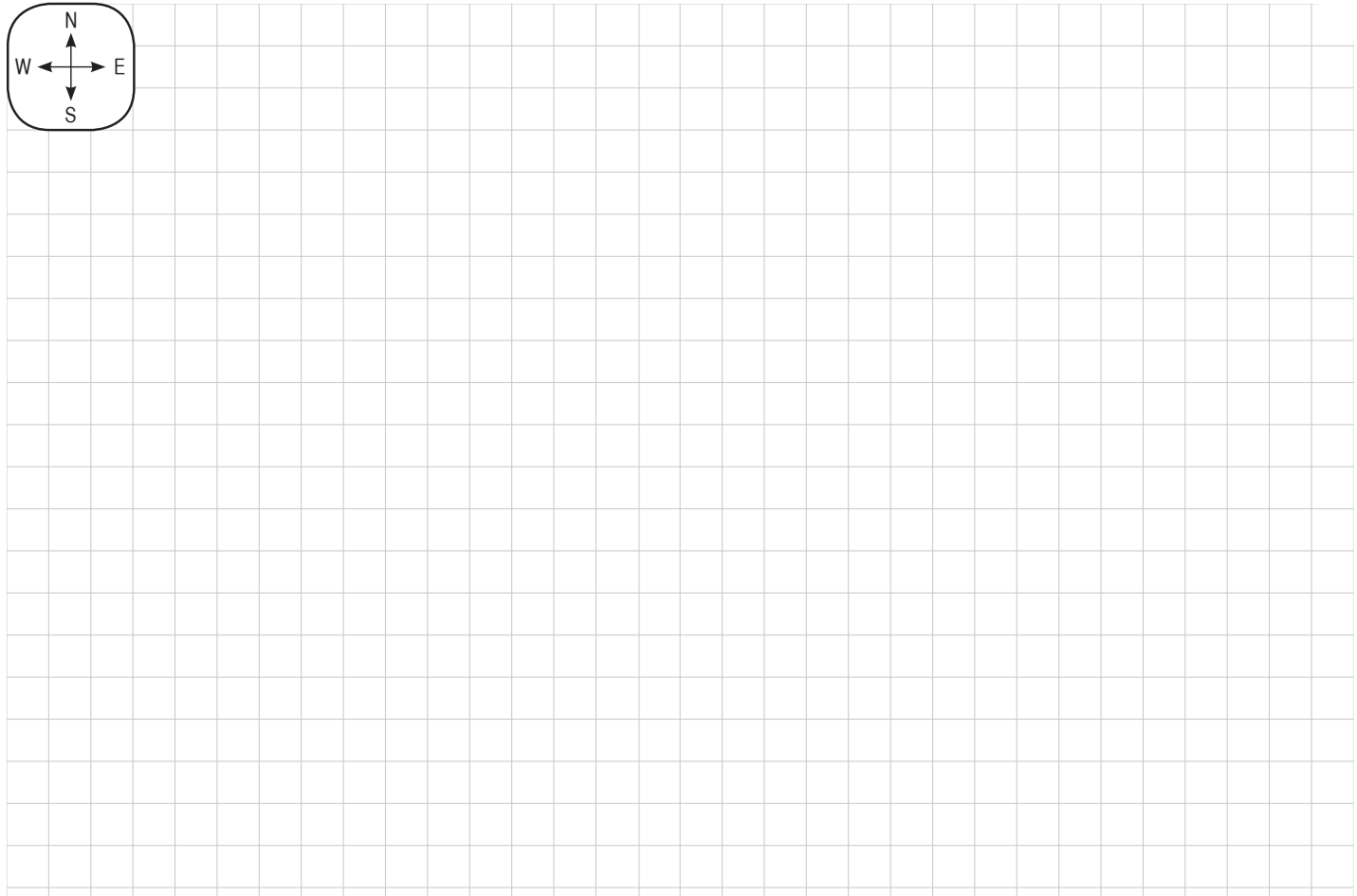
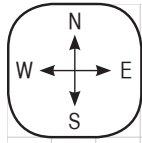
- 1 Submit a design to Pinnacle Sales Group at alfrescodesign@pinnaclesalesgroup.com Using the form on p.38
- 2 Once the Alfresco Design is complete, it will be emailed back to the dealer.
- 3 Submit the project to your client for final approval.

REQUIRED DESIGN SERVICE INFORMATION

- Sketch or architects drawing with "overall dimensions showing shape of kitchen" and where you would like the grill.
- Outdoor room (if one) relative to kitchen
- Photos of space (if possible)

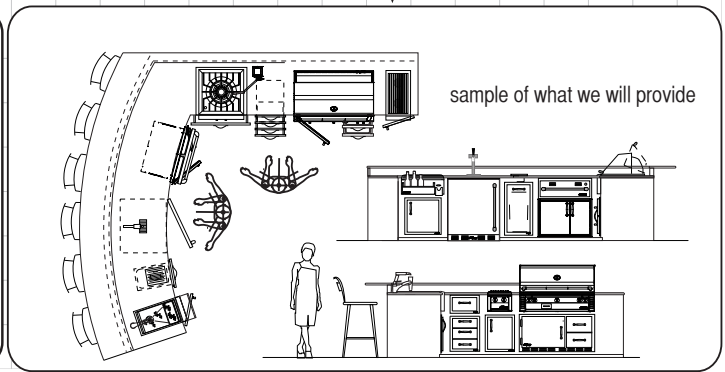
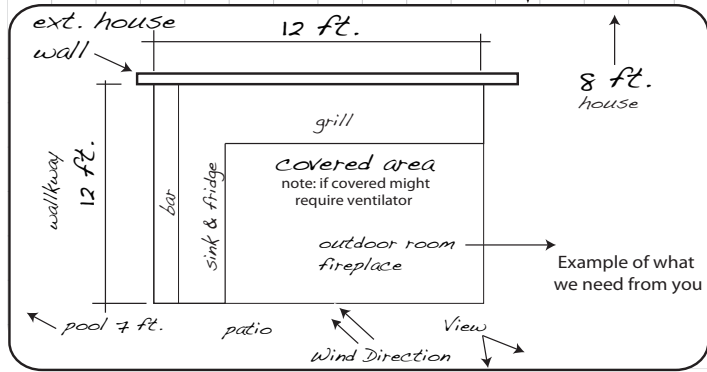
OPTIONAL DETAILING

- Request of recommendations for other convenient Alfresco accessories to optimize the outdoor culinary experience.
- Seating recommendations included in design
- Sink Considerations (this would require water, drainage, and even direct drain to sewer if disposer is desired)
- Refrigeration / Ice Maker



SCALE: Ea 1/4 in. square = 1 FT.

You provide Alfresco will provide



I would like the following items in my kitchen:

ALX2- grill _____

gas type: Natural Liquid Propane

Customer Name _____

Phone No. _____ Date _____

Please return by email to sales associate below:

Dealer _____ Ph: No.: _____

Sales Associate _____ Email: _____

Artisan[™]
Professional Grills



YOUR DREAM OUTDOOR KITCHEN MAY BE MORE AFFORDABLE THAN YOU THINK!

Before Artisan, your choice for an outdoor kitchen came down to premium American-made brands at a high cost, or much less expensive (and much lower quality) imports. At Artisan, they strive to offer affordable luxury with all the quality and features you expect in premium American-made appliances and accessories, at prices normally only imports can offer.

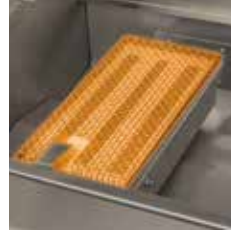
Our years of experience building equipment for some of the finest restaurants, and our state-of-the-art manufacturing facility, allow us to offer an unprecedented mix of quality and value.

ARTISAN GRILL FEATURES AND BENEFITS



Exclusive Heat Delivery System

Heavy-duty 304 Stainless Steel U-Shaped burners create evenly distributed high heat with 20,000 BTUs to the cooking surface



Sear Zone Infrared Burner

Optional interchangeable infrared burner. 20,000 BTU infrared burner 100% combusting ceramic surface for intense even heat and authentic stakehouse results. Cooks 50% faster with virtually no flare-ups.



Fully-adjustable Brass Valves Allow for Precision Flame Control

Completely redesigned grill knobs with precision touch in mind.



Adjustable Food Warming and Grilling Rack

Two position adjustable warming rack stores up and out of the way when rotissing. Ideal for above-grilling-surface holding and cooking. makes for one finger open and close of the grill hood.



Control Panel Lighting

Ambient Blue LED front panel lighting illuminates knobs creating a rich beam of light exactly where you need. (Excludes American Eagle Series)



Redesigned Switches

Stainless steel push-buttons for ignition and lighting are ergonomically integrated into the front control panel.



Halogen Work Lights

Integrated high-intensity halogen work lights on 32" and 36" models. Light lens is easily removable without the use of tools for easily changing bulbs, and cleaning. (Excludes American Eagle Series)



Hood Lift Assist

Heavy-duty stainless steel spring assist makes for one finger open and close of the grill hood.



Heavy-Duty 50-lb. Torque Rotisserie Motor

Turns foods smoothly and consistently, producing delicious rotissed foods (Excludes American Eagle Series)



Stainless Steel Cooking Grates

Heavy-duty stainless steel cooking grates with a special non-stick electro-polished finish positioned over briquette and "U" burner sections.



Integrated Thermometer

Standard on every Artisan grill, this convenient thermometer is built into the hood for accurate oven roasting temperatures.



Refractive Ceramic 5-Way Heat Distributing Briquettes

A special pyramid shape with a flat top and heat-holding cavity on underside delivers intense even heat to the cooking surface. Radiant tray locks briquettes in place. Turn tray over and fire burners on high with lid closed to self-clean.



Exclusive Heat Protected Wiring

Electrical wires are each encapsulated their full length with a 600° heat-resistance silicone sleeve, and electric connectors are protected with a silicone boot of same heat resistance silicone.



Made In The U.S.A.

Made from all commercial-grade 304, 18-8 stainless steel, all helic-arc hand-welded seams with no mechanical fasteners.



Flush Rear Infrared Rotisserie Burner

32" and 36" model grills come with a flush-mounted 1500° rear ceramic infrared rotisserie burner. (Excludes American Eagle Series)



Exclusive Control Panel Air Cooling Curtain

A special air-cooling plenum blasts a curtain of cool air that naturally flows up between the front control panel and firebox keeping front panel and bullnose safely cool to touch. This also protects all the electronics.



Free Grill Cover

No charge grill cover shipped with each Artisan Grill.

ARTISAN GRILLS



ARTISAN 32" PROFESSIONAL GRILL ARTP-32 | ARTP-32C

Features

- Three 20,000 BTU Main U Burners
- 15,000 BTU Infrared Rear Rotisserie Burner
- Total 75,000 BTUs
- 110V Electronic Ignition
- Bright Halogen Work Light
- 2-Position Warming Rack
- Grill Cover Included
- Available in Built-In and Freestanding Models
- Optional Sear Burner



MODEL	DESCRIPTION	MAP
ARTP-32-LP	Artisan 32" Built-In Grill, 3 Burner, Rotis, LP	\$ 2,240
ARTP-32-NG	Artisan 32" Built-In Grill, 3 Burner, Rotis, NG	\$ 2,240
ARTP-32C-LP	Artisan 32" Cart Grill, 3 Burner, Rotis, LP	\$ 2,800
ARTP-32C-NG	Artisan 32" Cart Grill, 3 Burner, Rotis, NG	\$ 2,800

OPTIONS AND ACCESSORIES

MODEL	DESCRIPTION	MAP
ART-ISB	Infrared Single Sear Burner Insert	\$ 298
ART-IJ32	Insulated Jacket for 32" Grill	\$ 448
ART-32CV	Vinyl Cover for 32" Built-In Grill - Replacement	\$ 72
ART-32CVC	Vinyl Cover for 32" Cart Grill - Replacement	\$ 72

ARTISAN 36" PROFESSIONAL GRILL ARTP-36 | AAEP-36C



Features

- Three 20,000 BTU Main U Burners
- 15,000 BTU Infrared Rear Rotisserie Burner
- Total 75,000 BTUs
- 110V Electronic Ignition
- Bright Halogen Work Light
- 2-Position Warming Rack
- Grill Cover Included
- Available in Built-In and Freestanding Models
- Optional Sear Burner



MODEL	DESCRIPTION	MAP
ARTP-36-LP	Artisan 36" Built-In Grill, 3 Burner, Rotis, LP	\$ 2,700
ARTP-36-NG	Artisan 36" Built-In Grill, 3 Burner, Rotis, NG	\$ 2,700
ARTP-36C-LP	Artisan 36" Cart Grill, 3 Burner, Rotis, LP	\$ 3,400
ARTP-36C-NG	Artisan 36" Cart Grill, 3 Burner, Rotis, NG	\$ 3,400

OPTIONS AND ACCESSORIES

MODEL	DESCRIPTION	MAP
ART-ISB	Infrared Single Sear Burner Insert	\$ 298
ART-IJ36	Insulated Jacket - 36" Grill	\$ 464
ART-36CV	Vinyl Cover for 36" Built-In Grill - Replacement	\$ 72
ART-36CVC	Vinyl Cover for 36" Cart Grill - Replacement	\$ 72

ARTISAN 26" AMERICAN EAGLE GRILL AAEP-26 | AAEP-26

Features

- Two 20,000 BTU Main U Burners
- Total 40,000 BTUs
- 9V Electronic Ignition
- Warming Rack
- Optional: Rotis Accessory ART-ROT26 (Includes Motor, Spit, and Forks Only)
- Grill Cover Included
- Available in Built-In and Freestanding Models



MODEL	DESCRIPTION	MAP
AAEP-26-LP	American Eagle 26" Built-In Grill, 2 Burner, LP	\$ 1,480
AAEP-26-NG	American Eagle 26" Built-In Grill, 2 Burner, NG	\$ 1,480
AAEP-26C-LP	American Eagle 26" Cart Grill, 2 Burner, LP	\$ 2,140
AAEP-26C-NG	American Eagle 26" Cart Grill, 2 Burner, NG	\$ 2,140

OPTIONS AND ACCESSORIES

MODEL	DESCRIPTION	MAP
ART-IJ26	Insulated Jacket for 26" Grill	\$ 428
ART-26CV	Vinyl Cover for 26" Built-In Grill - Replacement	\$ 72
ART-26CVC	Vinyl Cover for AAEP-26 - Replacement	\$ 72
ART-ROT26	Rotisserie Kit-AAEP26 Only	\$ 176

ARTISAN 32" AMERICAN EAGLE BUILT-IN GRILL
AAEP-32 I AAEP-32C



Features

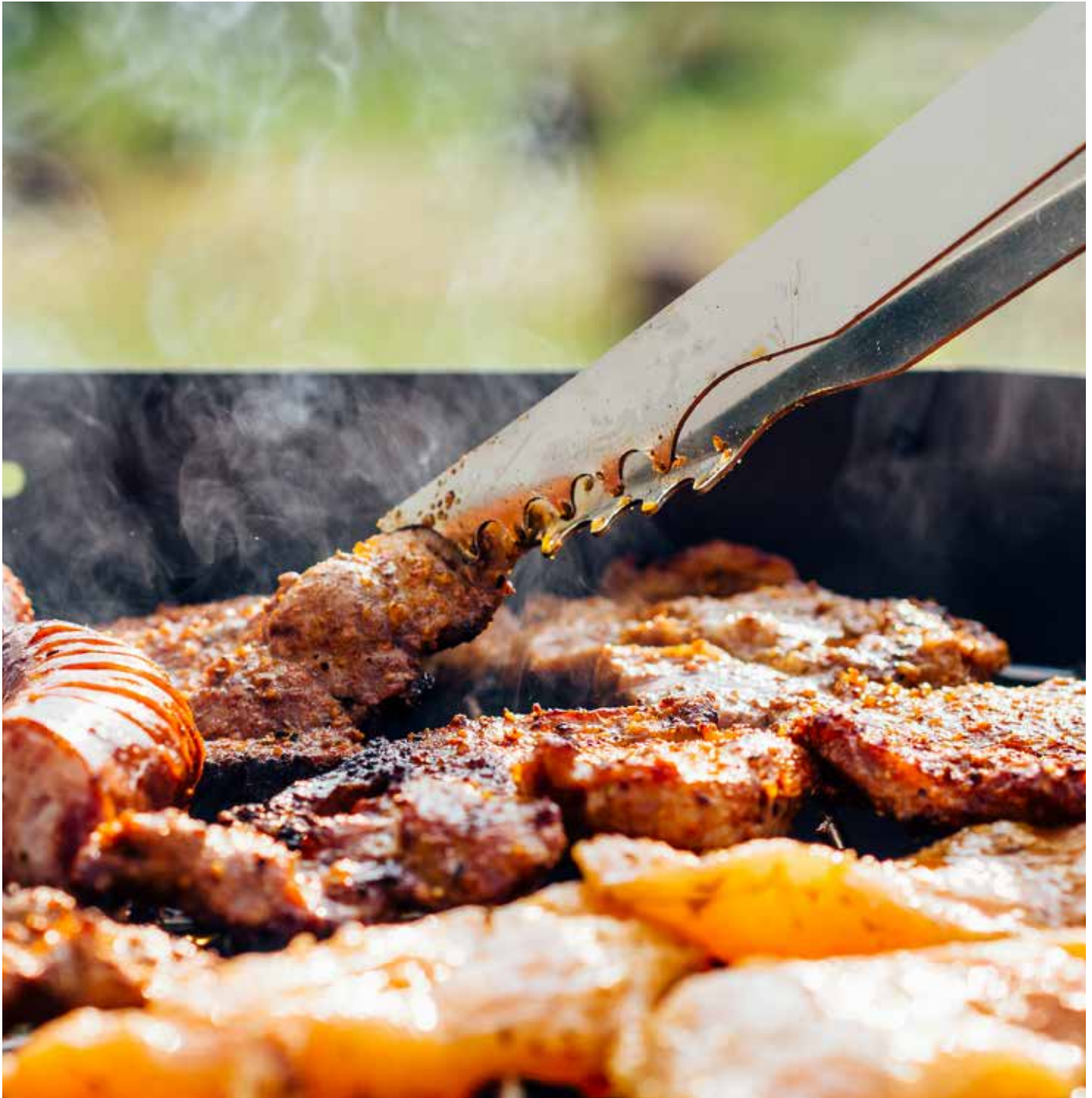
- Three 20,000 BTU Main U Burners
- Total 60,000 BTUs
- 9V Electronic Ignition
- Warming Rack
- Optional: Rotis Accessory ART-ROT32 (Includes Motor, Spit, and Forks Only)
- Grill Cover Included
- Available in Built-In and Freestanding Models



MODEL	DESCRIPTION	MAP
AAEP-32-LP	American Eagle 32" Built-In Grill, 3 Burner, LP	\$ 1,780
AAEP-32-NG	American Eagle 32" Built-In Grill, 3 Burner, NG	\$ 1,780
AAEP-32C-LP	American Eagle 32" Cart Grill, 3 Burner, LP	\$ 2,540
AAEP-32C-NG	American Eagle 32" Cart Grill, 3 Burner, NG	\$ 2,540

OPTIONS AND ACCESSORIES

MODEL	DESCRIPTION	MAP
ART-IJ32	Insulated Jacket	\$ 448
ART-32CV	Vinyl Cover for 32" Built-In Grill - Replacement	\$ 72
ART-32CVC	Vinyl Cover for 32" Cart Grill - Replacement	\$ 72
ART-ROT32	Rotisserie Kit-AAEP32 Only	\$ 196



CHOOSE YOUR ACCESSORIES

Complete your dream outdoor kitchen with Artisan's grill accessory offering. These pieces are completely manufactured of premium 304 stainless steel to withstand years of outdoor kitchen use. Please review the following pages to make your selections.

SIDE BURNER ACCESSORIES



MODEL	DESCRIPTION	WIDTH	MAP
ART-SB1-NG	Single Side Burner, NG	12"	\$ 396
ART-SB1-LP	Single Side Burner, LP	12"	\$ 396

MODEL	DESCRIPTION	MAP
ART-ISB	Infrared Single Sear Burner Insert	\$ 298
ARTC-SBM	Shelf Mount for Cart Model, ART-SB1 Only	\$ 120
ART-ROT26	Rotisserie Kit, AAEP-26 Grill Only	\$ 176
ART-ROT32	Rotisserie Kit, AAEP-32 Grill Only	\$ 196

DOOR AND DRAWERS



MODEL	DESCRIPTION	MAP
ARTP-SDL	17" Single Door, Left Side	\$ 200
ARTP-SDR	17" Single Door, Right Side	\$ 200



MODEL	DESCRIPTION	MAP
ARTP-DD	30" Double Doors	\$ 350



MODEL	DESCRIPTION	MAP
ARTP-DS	Door Shelf	\$ 60



MODEL	DESCRIPTION	MAP
ARTP-2DR	17" Two Drawer Unit	\$ 560



MODEL	DESCRIPTION	MAP
ARTP-DDC	32" Door, Drawer Combo Unit	\$ 680



MODEL	DESCRIPTION	MAP
ARTP-TC	15" Trash Center Model	\$ 580



MODEL	DESCRIPTION	MAP
ARTP-PWC	Prep & Waste Chute Model	\$ 292

ALFRESCO LIMITED WARRANTY (RESIDENTIAL USE ONLY)

GRILLS

LIMITED LIFETIME WARRANTY: Alfresco will repair or replace any stainless steel part including all fabricated stainless steel components, stainless steel burners and standard round grill grates (excluding what is covered in the Five Year Limited Warranty) to be defective from workmanship and when subjected to normal residential use and service. This warranty excludes surface corrosion, scratches, discoloration, weather and atmospheric related staining, and minor surface rust and oxidation which are normal conditions. Labor to remove and replace defective parts is not covered after first year of ownership. Shipping and handling cost will apply. Alfresco recommends that you use an authorized Alfresco servicer to perform such service..

LIMITED FIVE-YEAR WARRANTY: Alfresco warrants the stainless steel briquette trays, gas valves and drip pans, to be free from defects in materials and workmanship under normal residential use for a period of five years from the original date of purchase. Labor to remove and replace defective parts is not covered after first year of ownership. Shipping and handling cost will apply. All service provided by Alfresco under this warranty must be performed by an authorized Alfresco servicer.

FULL TWO YEAR WARRANTY: For two years from the date of original purchase, your Alfresco grill warranty covers all parts and labor to repair or replace, under normal residential use, any part of the product that proves to be defective in materials or workmanship. All service provided by Alfresco under this warranty must be performed by an authorized Alfresco servicer, unless otherwise specified by Alfresco. Service will only be provided during normal business hours.

TERMS APPLICABLE TO EACH WARRANTY: The warranty applies only to products installed for normal residential use. The warranty applies only to products installed in any one of the fifty states of the United States, the District of Columbia or the ten provinces of Canada. This warranty does not cover any parts or labor to correct any defect caused by negligence, accident or improper use, maintenance, installation, service or repair.

SERVICE & REPLACEMENT PARTS: For quicker and easier results visit our website at: <http://www.alfrescogrills.com> or, call **866-203-5607** to report service problems and/or to obtain replacement parts for your Alfresco Grill. Replacement parts are shipped F.O.B. Commerce, California 90040. Before calling for service, please make sure you have the following information: Model number, serial number, date of purchase, and proof of purchase by original owner..

LIMITATION & EXCLUSIONS:

1. Alfresco's warranty applies only to the original purchaser and may not be transferred.
2. Alfresco's warranty is in lieu of all other warranties, expressed or implied and all other obligations or liabilities related to the sale or use of its grill products.
3. Alfresco's warranty shall not apply and Alfresco is not responsible for damage resulting from misuse, abuse, alteration of or tampering with the appliance, accident, hostile environment, flare-up fires, improper installation, or installation not in accordance with the instructions contained in the User Manual, or the local codes.
4. Alfresco shall not be liable for incidental, consequential, special or contingent damages resulting from its breach of this written warranty or any implied warranty.
5. Some states do not allow limitations on how long an implied warranty lasts, or the exclusions of or limitations on consequential damages. This warranty gives you specific legal rights and you may have other rights, which vary from state to state.
6. No one has the authority to add to or vary Alfresco's warranty, or to create for Alfresco any other obligation or liability in connection with the sale or use of its products.

Alfresco shall not be responsible for and shall not pay for the following:

1. Installation or start-up.
2. Service by an unauthorized service provider.
3. Damage or repair due to service by an unauthorized service provider or use of unauthorized parts.
4. Improper installation.
5. Damage caused by accidents, abuse, alteration, misuse, installation that is not in accordance with the instructions contained in the User Manual, or local codes.
6. Units installed in non-residential applications such as retirement homes, restaurants, hotels, schools, etc.
7. To correct normal adjustments or settings due to improper installation, commissioning or local gas supply properties.
8. Shipping and handling costs, export duties, or installation cost.
9. The cost of service calls to diagnose trouble; or removal or re-installation cost.

ALFRESCO REFRIGERATOR WARRANTY

I. FULL ONE YEAR WARRANTY: Built-in/freestanding undercounter refrigerators and all of their components, are warranted to be free from defects in material or workmanship under normal household use for a period of one (1) year from the date of original retail purchase. Alfresco, agrees to repair or replace at its option, any part which fails or is found to be defective during the warranty period.

II. LIMITED FIVE-YEAR WARRANTY: The structural integrity of Alfresco-made stainless steel parts are warranted to be free from defects in material and workmanship, when subjected to normal operation and service in residential applications only, for a period of five years from the date of purchase. This warranty is limited to the replacement of the defective parts.

III. ONE YEAR (OUTDOOR) REFRIGERATION WARRANTY: Any sealed refrigeration system component, as listed below, is warranted to be free from defective materials or workmanship in normal household use during the first year from the date of original retail purchase. Alfresco agrees to repair or replace, at its option, any part, which fails or is found to be defective during the warranty period. Sealed Refrigeration System Components: Compressor, Evaporator, Condenser, Connecting Tubing, Dryer/Strainer. It is recommended that in temperatures above 120 degrees F and below 15 degrees F the unit be shut off. The normal operating range for the unit for best interior temperature results is between 32 degrees F and 100 degrees F.

IV. SERVICE & REPLACEMENT PARTS: For quicker and easier results visit our website at: <http://www.alfrescogrills.com> or, call **866-203-5607** to report service problems and/or to obtain replacement parts for your Alfresco Grill. Replacement parts are shipped F.O.B. Commerce, California 90040. Before calling for service, please make sure you have the following information: **Model number, Serial Number, Date of Purchase, and Proof of Purchase by Original Owner.**

V. LIMITATION & EXCLUSIONS:

1. Alfresco's warranty applies only to the original purchaser and may not be transferred.
2. Alfresco's warranty is in lieu of all other warranties, expressed or implied and all other obligations or liabilities related to the sale or use of its grill products.
3. Alfresco's warranty shall not apply and Alfresco is not responsible for damage resulting from misuse, abuse, alteration of or tampering with the appliance, accident, hostile environment, flare-up fires, improper installation, or installation not in accordance with the instructions contained in the User Manual, or the local codes.
4. Alfresco shall not be liable for incidental, consequential, special or contingent damages resulting from its breach of this written warranty or any implied warranty.
5. Some states do not allow limitations on how long an implied warranty lasts, or the exclusions of or limitations on consequential damages. This warranty gives you specific legal rights and you may have other rights, which vary from state to state.
6. No one has the authority to add to or vary Alfresco's warranty, or to create for Alfresco any other obligation or liability in connection with the sale or use of its products.

VI. WHAT IS NOT COVERED:

Alfresco shall not be responsible for and shall not pay for the following:

1. Installation or start-up.
2. Service by an unauthorized service provider.
3. Damage or repair due to service by an unauthorized service provider or use of unauthorized parts.
4. Improper installation.
5. Damage caused by accidents, abuse, alteration, misuse, installation that is not in accordance with the instructions contained in the User Manual, or local codes.
6. Units installed in non-residential applications such as retirement homes, restaurants, hotels, schools, etc.
7. To correct normal adjustments or settings due to improper installation, commissioning or local gas supply properties.
8. Shipping and handling costs, export duties, or installation cost.
9. The cost of service calls to diagnose trouble; or removal or re-installation cost.

ALFRESCO & ARTISAN GRILL “MULTI-USER” LIMITED WARRANTY

This warranty supports Alfresco and Artisan grills when used in Multi-User* environment including but not limited to apartment complexes, multi-family dwelling complexes, schools, hotels, fire stations, police stations, etc.

Excluding: Restaurants and settings where the grill usage is primarily commercial

FULL ONE YEAR WARRANTY: For one year from the date of original purchase, your Multi-Use Alfresco / Artisan grill warranty covers all parts and labor to repair or replace, under normal use, any part of the product that proves to be defective in materials or workmanship. All service provided under this warranty must be performed by an authorized Alfresco / Artisan servicer, unless otherwise specified by Alfresco. Service will only be provided during normal business hours. **The above stated warranty is the total coverage available in support of Alfresco and Artisan grill products utilized in the multi-use environment.**

TERMS APPLICABLE TO EACH WARRANTY: The warranty applies only to products installed in Multi-Use facilities but utilized for normal residential type (Non-Commercial) use. The warranty applies only to products installed in any one of the fifty states of the United States, the District Columbia or the ten provinces of Canada. This warranty does not cover any parts or labor to correct defects caused by negligence, accident or improper use, maintenance, installation, service or repair. .

SERVICE & REPLACEMENT PARTS: For quicker and easier results visit our websites at: <http://www.alfrescogrills.com> or <http://www.artisangrills.com> or, call 866-203-5607 to report service problems and/or to obtain replacement parts for your Alfresco Grill. Replacement parts are shipped F.O.B. City of Industry, California 91745. Before calling for service, please make sure you have the following information: Model number, serial number, date of purchase and proof of purchase by original owner. .

SERVICE & REPLACEMENT PARTS: For quicker and easier results visit our website at: <http://www.alfrescogrills.com> or, call **866-203-5607** to report service problems and/or to obtain replacement parts for your Alfresco Grill. Replacement parts are shipped F.O.B. Commerce, California 90040. Before calling for service, please make sure you have the following information: Model number, serial number, date of purchase, and proof of purchase by original owner.

LIMITATION & EXCLUSIONS:

1. This warranty applies only to the original purchaser and may not be transferred.
2. This warranty is in lieu of all other warranties, expressed or implied and all other obligations or liabilities related to the sale or use of its grill products.
3. Alfresco's warranty shall not apply and Alfresco is not responsible for damage resulting from misuse, abuse, alteration or tampering with the appliance, accident, hostile environment, flare-up fires, improper installation, or installation not in accordance with the instructions contained in the User Manual, or the local codes.
4. Alfresco / Artisan shall not be liable for incidental, consequential, special or contingent damages resulting from its breach of this written warranty or any implied warranty.
5. Some states do not allow limitations on how long an implied warranty lasts, or the exclusions of or limitations on consequential damages. This warranty gives you specific legal rights and you may have other rights, which vary from state to state.
6. No one has the authority to add to or vary this warranty, or to create for Alfresco / Artisan any other obligation or liability in connection with the sale or use of its products.

ARTISAN™ GRILL WARRANTY

The warranties shown below commence on the date of the original purchase.

15 YEARS – Stainless Steel Burners.

10 YEARS – All Stainless Steel Parts.

3 YEARS – Ceramic Briquette Trays (briquette excluded).

1 YEAR – Ignition Systems (Batteries excluded), Side Burners, Rotisserie Motors and Thermometers.

TERMS APPLICABLE TO THE WARRANTY ABOVE:

Artisan™ Grill's warranty applies only to products installed for normal residential use. The warranty applies only to products installed in any one of the fifty states of the United States, the District of Columbia or the ten provinces of Canada.

This warranty does not apply to rust, corrosion, oxidation or discoloration, unless the affected component becomes inoperable, to correct any defect caused by negligence, accident or improper use, maintenance, installation, service or repair. It does not cover labor or labor related charges. Product must be installed and connected to a gas source in accordance with what is specified in the installation instructions or in the Care and Use Manual, with no exceptions, and by a qualified professional installer.

All replacement components, such as valves, etc, must be an Artisan product. Artisan's warranty only applies to the original purchaser and may not be transferred, and commences from the date of purchase, and is valid only with proof of purchase.

LIMITATIONS & EXCLUSIONS:

1. Artisan's warranty applies only to the original purchaser and may not be transferred.
2. Artisan's warranty is in lieu of all other warranties, expressed or implied and all other obligations or liabilities related to the sale or use of its grill products.
3. Artisan's warranty shall not apply and Artisan is not responsible for damage resulting from misuse, abuse, alteration of or tampering with the appliance, accident, hostile environment, flare-up fires, improper installation, or installation not in accordance with the instructions contained in the User Manual, or the local codes.
4. Artisan shall not be liable for incidental, consequential, special or contingent damages resulting from its breach of this written warranty or any implied warranty.
5. Some states do not allow limitations on how long an implied warranty lasts, or the exclusions of or limitations on consequential damages.

This warranty gives you specific legal rights and you may have other rights, which vary from state to state. No one has the authority to add to or vary Artisan's warranty, or to create for Artisan any other obligation or liability in connection with the sale or use of its products.

ARTISAN SHALL NOT BE RESPONSIBLE FOR AND SHALL NOT PAY FOR THE FOLLOWING:

1. Installation or start-up.
2. Service by an unauthorized service provider.
3. Damage or repair due to service by an unauthorized service provider or use of unauthorized parts.
4. Improper installation.
5. Damage caused by accidents, abuse, alteration, misuse, installation that is not in accordance with the instructions contained in the User Manual, or local codes.
6. Units installed in nonresidential applications such as retirement homes, restaurants, hotels, schools, etc.
7. To correct normal adjustments or settings due to improper installation, commissioning or local gas supply properties.
8. Shipping and handling costs, export duties, or installation cost.
9. The cost of service calls to diagnose trouble; or removal or re-installation cost.

SERVICE AND REPLACEMENT PARTS:

For quicker and easier results, visit our website at: <http://artisangrills.com> or, call our toll free number at: **(866)-203-5607** to report service problems and / or to obtain replacement parts for your Artisan™ Grill.

Replacement parts are shipped F.O.B. Commerce, California 90040.

Before calling for service, please make sure you have the following information:

- Model number and Serial number
- Date of purchase and Proof of purchase

The warranty specifically excludes liability for indirect, incidental or consequential damages.

This product is designed for residential use only.

For Warranty Claims, Please Call: **(866) 203-5607**

TERMS AND CONDITIONS

Orders: All orders and any subsequent change orders must be submitted in writing and delivered to Pinnacle Express, Inc. by mail, fax or e-mail. No telephone orders will be accepted. Special Order items are Non-Cancellable.

Prices: All prices are subject to change without notice and are exclusive of any sales or use taxes, shipping, delivery, special packaging, or handling charges that may apply to each customer or to each order.

Minimum Advertised Pricing: All sales are subject to Pinnacle Express, Inc. or Manufacturer minimum advertised prices. Failure to comply with minimum advertised prices will result in cancellation of any agreement and violators will not be entitled to purchase further products.

Minimum Sale Price: All sales are subject to Pinnacle Express, Inc. or Manufacturer minimum sale prices. Failure to comply with minimum sale prices will result in cancellation of any agreement and violators will not be entitled to purchase further products.

Freight and Handling: Pinnacle Express, Inc. reserves the right to ship products by its choice of carrier. All shipments are F.O.B. from place of shipment, and risk of loss shall pass to the Buyer upon delivery to the carrier at the point of shipment. Additional charges may apply for special handling and packaging.

Deliveries: Pinnacle Express, Inc. shall not be liable for failure to deliver or for delays in delivery or performance due to: (1) causes beyond its reasonable control; (2) acts of God, acts of Buyer, acts of civil or military authority, governmental allocations or controls, fires, strikes or other labor difficulties, riots or other civil disturbances, delays in its usual source of supply, delays in transportation; (3) any other commercial impracticability. In the event of such delay, the date of delivery or performance shall be extended for a period equal to the time lost by reason of the delay.

Claims: All claims for non-conforming delivery of Products must be made within fifteen (15) days of receipt of shipment.

Damage or Loss: Any claim for damage or loss in shipment should be made to the carrier immediately by the customer. Products become the responsibility of the Buyer when accepted by the carrier in good condition from Pinnacle Express, Inc. and we are not able to process shipping damage claims.

Returns: Only Items marked in this Price List as "Stock Item" are subject to return. All other items are considered Special Order Items and are NOT RETURNABLE. No Products may be returned without a Pinnacle Express, Inc. Return Goods Authorization (RGA) Number issued prior to the return of Product. Any product returned without an RGA will be refused and returned to the sender. RGA's are valid for thirty (30) days only. All returns are subject to inspection before being approved for credit - products must be in salable condition to be considered for return or replacement. A 20% restocking charge will apply to all returns.

Payment: Unless otherwise noted, payment terms are Net Due on Receipt. Balances owed on invoices over 30 days old are subject to a 1.5% per month charge. Each shipment or delivery shall be deemed to have been sold under a separate and or independent contract and payment thereof shall be made in accordance with the terms of this agreement and of the invoice rendered by Pinnacle Express, Inc. Buyer agrees that title to the personal property described herein shall not vest in Buyer until paid in full. In the event of insolvency or the filing of bankruptcy by the Buyer, Buyer agrees to return all merchandise to Pinnacle Express, Inc.

Warranties: Products distributed by Pinnacle Express, Inc. are the products of reputable manufacturers sold under their respective brand or trade names. Pinnacle Express, Inc. shall use its best efforts to obtain from each manufacturer, in accordance with the manufacturer's warranty or customary practice, the repair or replacement of products that may prove defective in material or workmanship. The foregoing shall constitute the exclusive remedy of the Buyer and the sole obligation of Pinnacle Express, Inc. Except as to Title, THERE ARE NO WARRANTIES, EITHER WRITTEN, ORAL, IMPLIED, OR STATUTORY relating to the described products which shall extend beyond that described in this paragraph. NO WARRANTY OF MERCHANTABILITY OR OF FITNESS FOR PURPOSE SHALL APPLY.

Limitation of Liability: Pinnacle Express, Inc.'s liability on any claims for loss or damage arising out of this contract or from the performance or breach thereof or connected with the supplying of products hereunder, or its sale, resale, operation or use, whether based on warranty, contract, negligence or other grounds shall not exceed the price allowable for such products or parts thereof involved in the claim. Pinnacle Express, Inc. shall not, under any circumstances, be liable for any labor charges unless agreed upon in advance and in writing by Pinnacle Express, Inc. and the manufacturer of the products involved. Pinnacle Express, Inc. shall not in any event be liable for special or consequential damages, including, but not limited to, loss of profits or revenue, loss of use of the product or any associated product, cost of capital, cost of substitute products, facilities or services, downtime costs, or claims of customers of the Buyer for such damages.

General: The possession of this Price List by anyone is not to be considered as an offer to sell any of the Products contained herein. This Price List supersedes all previous price lists or memorandums. Pinnacle Express, Inc.'s existing Trade Terms and Conditions remain in effect. The above Terms and Conditions shall be a part of all Orders accepted by Pinnacle Express, Inc. and shall supersede any conflicting provisions of our customer's purchase orders. These terms and conditions are subject to change without notice.



Pinnacle Express, Inc.

P.O. Box 1836 • Dundee, FL 33838

Phone: 800-292-8374

Fax: 800-574-8805

www.pinnacleexpress.com