



 **FLEURCO**™

Celebrating over 50 years of Design, Quality & Service

FLEURCO is a Canadian company that specializes in the design, manufacture and distribution of a full range of glass shower and bathtub doors, as well as acrylic bases and bathtubs. Our company relies on the latest technology and designs to offer you top quality products. At FLEURCO, we use holistic design principles where performance, quality, functionality and ultimately, customer satisfaction, are just as important as the aesthetics. Fleurco's comprehensive product line features stylized hinges and rolling systems, classically designed shower bases, and finishes that easily adapt to both traditional and contemporary bathroom decors.

WWW.FLEURCO.COM · WWW.DESIGNASHOWER.COM · WWW.ARIATUBS.COM · WWW.FLEURCOBASES.COM

FLEURCO INC. CANADA TEL. 1.514.326.2222 | TOLL FREE 1.800.993.0033 | FAX 1.514.326.2008

FLEURCO INC. USA EAST TEL. 1.856.778.0110 | TOLL FREE 1.888.568.2121 | FAX 856.778.0094

FLEURCO INC. USA WEST TEL. 1.562.368.8800 | TOLL FREE 1.877.413.2880 | FAX 562.368.8812

FLEURCO INC. USA MIDWEST TEL. 1.630.607.0847 | FAX 331.225.2549



Shower Shield

- EUROPEAN STYLE WALK-IN SHOWER SHIELD
- 3/8" (10 MM) CLEAR GLASS
- MICROTEK GLASS SURFACE PROTECTION INCLUDED
- STANDARD GLASS HEIGHT: 75"
- 10-YEAR LIMITED WARRANTY

Model VMSXS24-11-40

SELECT
Monaco Square



Tub Shield

Rectangular Hinges

Squared Top

"X" Support Bar

- 170° OUTWARD AND 20° INWARD OPENING
- REVERSIBLE LEFT OR RIGHT INSTALLATION
- MICROTEK GLASS SURFACE PROTECTION INCLUDED
- 3/8" (10 MM) CLEAR TEMPERED GLASS
- 10-YEAR LIMITED WARRANTY

Model VMSXT24-11-40



Tub Shield

- 170° OUTWARD AND 20° INWARD OPENING
- REVERSIBLE LEFT OR RIGHT SIDE INSTALLATION
- MICROTEK GLASS SURFACE PROTECTION INCLUDED
- 3/8" (10 MM) CLEAR TEMPERED GLASS
- 10-YEAR LIMITED WARRANTY

Model VQRXT24-11-40

SELECT
Monaco Round



Shower Shield

Oval Hinges

Rounded Top

"X" Support Bar

- EUROPEAN STYLE WALK-IN SHOWER SHIELD
- 3/8" (10 MM) CLEAR GLASS
- MICROTEK GLASS SURFACE PROTECTION INCLUDED
- STANDARD GLASS HEIGHT: 75"
- 10-YEAR LIMITED WARRANTY

Model VQRXS24-11-40

Tub Panel



Rectangular
Hinges

SELECT
Solo Square Top

- 90° OUTWARD OPENING
- REVERSIBLE LEFT OR RIGHT SIDE INSTALLATION
- MICROTEK GLASS SURFACE PROTECTION INCLUDED
- 3/8" (10 MM) CLEAR TEMPERED GLASS
- 10-YEAR LIMITED WARRANTY

Model VMSXT029-11-40

Tub Panel

Oval
Hinges



SELECT
Solo Round Top

Model VQRXT029-11-40

**ALL SELECT MODELS
ARE AVAILABLE IN
CHROME & BRUSHED NICKEL
FINISHES**

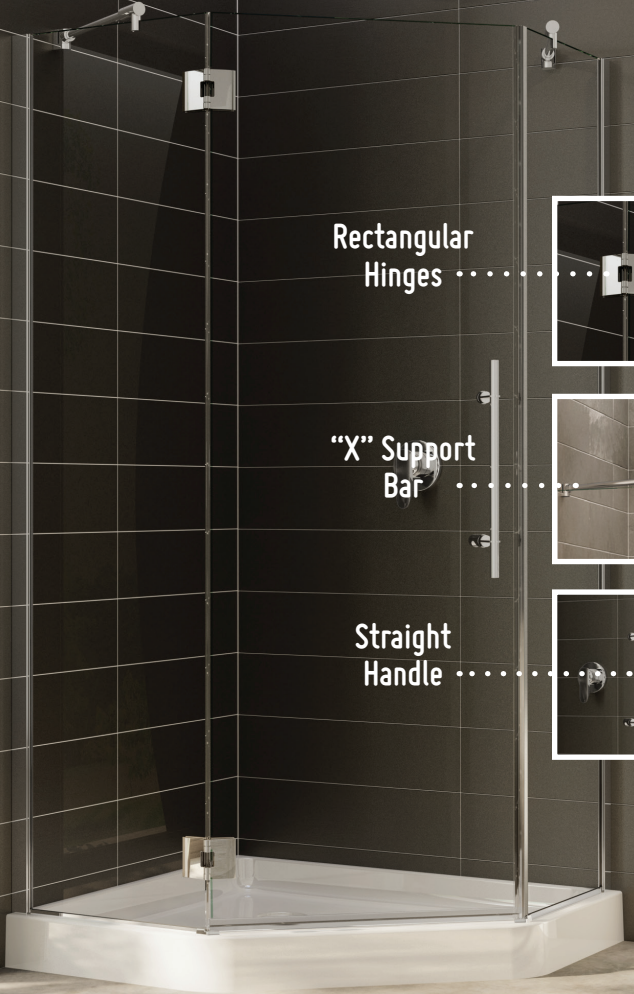


Chrome



Brushed Nickel

SELECT
Platinum Neo



Rectangular Hinges



"X" Support Bar



Straight Handle



- EUROPEAN STYLE FRAMELESS DOOR
- GLASS-TO-GLASS HINGES
- 3/8" (10 MM) CLEAR TEMPERED GLASS
- MICROTEK GLASS SURFACE PROTECTION INCLUDED
- 10-YEAR LIMITED WARRANTY

Model PMXNA42-11-40

SELECT
Platinum
Kara



Model PMKP57-11-40-75

SELECT
Platinum
Lexus



Model PMLP57-11-40-75

ALL PLATINUM SELECT
MODELS ARE AVAILABLE IN
CHROME & BRUSHED NICKEL
FINISHES



Chrome



Brushed Nickel

Apollo In-Line

- 1/4" (6 MM) CLEAR TEMPERED GLASS
- SAFETY TEMPERED GLASS
- REVERSIBLE LEFT RIGHT
- STANDARD GLASS HEIGHT: 75"
- 10-YEAR LIMITED WARRANTY

Model NA60-33-40

Apollo 2 Sided CRP Configuration

- RETURN PANEL SIZES: 32", 34" & 36"
- SAFETY TEMPERED GLASS
- REVERSIBLE RIGHT LEFT
- 1/4" (6 MM) CLEAR TEMPERED GLASS
- MICROTEK GLASS SURFACE PROTECTION INCLUDED
- STANDARD GLASS HEIGHT: 75"
- 10-YEAR LIMITED WARRANTY

Model NAP4836-33-40

Apollo Matte Black

Apollo 2 Sided CW Configuration

Model NAW6036-33-40

Apollo Tub Enclosure

- INTEGRATED DOOR CATCH
- ANTI-JUMP SYSTEM
- CONCEALED ROLLERS
- ADJUSTABLE WALL JAMB
- GASKET ENSURES A TIGHT SEAL
- BOTTOM DOOR SWEEP

Model NAT60-33-40

NEW!
Matte Black

Gemini In-Line

- 2 SLIDING DOORS OPENING EITHER LEFT OR RIGHT
- 1/4" (6 MM) CLEAR TEMPERED GLASS
- MICROTEK GLASS SURFACE PROTECTION INCLUDED
- SHOWER DOOR HEIGHT: 75"
- 10-YEAR LIMITED WARRANTY

Model NG160-33-40

Gemini 2 Sided

- RETURN PANEL SIZES: 32" & 36"
- 2 SLIDING DOORS OPENING EITHER LEFT OR RIGHT
- 1/4" (6 MM) CLEAR TEMPERED GLASS
- MICROTEK GLASS SURFACE PROTECTION INCLUDED
- SHOWER DOOR HEIGHT: 75"
- 10-YEAR LIMITED WARRANTY

Model NGU6036-33-40

Gemini
Matte Black

Gemini Tub Enclosure

- 2 SLIDING DOORS OPENING EITHER LEFT OR RIGHT
- 1/4" (6 MM) CLEAR TEMPERED GLASS
- MICROTEK GLASS SURFACE PROTECTION INCLUDED
- SHOWER DOOR HEIGHT: 60"
- 10-YEAR LIMITED WARRANTY

Model NGT60-33-40



NEW!
Matte Black

Gemini Plus In-Line

- 2 SLIDING DOORS OPENING EITHER LEFT OR RIGHT
- 3/8" (10 MM) CLEAR TEMPERED GLASS
- MICROTEK GLASS SURFACE PROTECTION INCLUDED
- SHOWER DOOR HEIGHT: 79"
- 10-YEAR LIMITED WARRANTY

Model NP160-33-40

Gemini Plus 2 Sided

- RETURN PANEL SIZES: 32" & 36"
- 2 SLIDING DOORS OPENING EITHER LEFT OR RIGHT
- 3/8" (10 MM) CLEAR TEMPERED GLASS
- MICROTEK GLASS SURFACE PROTECTION INCLUDED
- SHOWER DOOR HEIGHT: 79"
- 10-YEAR LIMITED WARRANTY

Model NPU6036-33-40

Gemini Plus Matte Black

Gemini Plus Tub Enclosure

- 2 SLIDING DOORS OPENING EITHER LEFT OR RIGHT
- 3/8" (10 MM) CLEAR TEMPERED GLASS
- MICROTEK GLASS SURFACE PROTECTION INCLUDED
- SHOWER DOOR HEIGHT: 66"
- 10-YEAR LIMITED WARRANTY

Model NPT60-33-40



NEW!
Matte Black

Horizon In-Line



Model NH160-33-40-79

Horizon 2 Sided



Model NHR26036-11-40R-79

New! Matte Black Finish
79" & 86"

- EUROPEAN STYLE FRAMELESS DOOR
- DETACHABLE BOTTOM GUIDE TO FACILITATE MAINTENANCE
- EASY TO INSTALL
- DOOR MAGNETS ENSURE A WATER-TIGHT SEAL
- GLASS HEIGHTS: 76", 79" & 86"
- 5/16" CLEAR SAFETY TEMPERED GLASS
- CHROME, BRUSHED NICKEL & MATTE BLACK FINISHES
- MICROTEK GLASS SURFACE PROTECTION INCLUDED
- 10-YEAR LIMITED WARRANTY

**HORIZON MODELS
ARE AVAILABLE IN
CHROME, BRUSHED NICKEL
& *MATTE BLACK FINISHES**

*79" & 86" heights only



Chrome



Brushed Nickel



New! Matte Black

Skyline In-Line



75"

79"

86"

Skyline New Model!

Skyline 2 Sided



Skyline Tub Enclosure



**SKYLINE MODELS
ARE AVAILABLE IN
CHROME, BRUSHED NICKEL
& *MATTE BLACK FINISHES**

*79" & 86" heights only



Chrome



Brushed Nickel



New! Matte Black



**Pura Cube
New Model!**

Model PJ63232-11-40



**Platinum Cube
New Sizes!**

- EUROPEAN STYLE FRAMELESS DOOR
- MULTIPLE CONFIGURATIONS
- 3/8" (10 MM) CLEAR TEMPERED GLASS
- MICROTEK GLASS SURFACE PROTECTION OPTIONAL
- CUSTOM SIZES AVAILABLE
- 10-YEAR LIMITED WARRANTY

Model PXQ3636-11-40R-TDH



**Pura Neo
New Model!**

- EUROPEAN STYLE FRAMELESS DOOR
- AVAILABLE WITH SUPPORT BAR
- 1/4" (6 MM) CLEAR TEMPERED GLASS
- 10-YEAR LIMITED WARRANTY

Model PJNA36-11-40

**PURA CUBE, PURA NEO
& PLATINUM CUBE MODELS
ARE AVAILABLE IN
CHROME & BRUSHED NICKEL FINISHES**



Chrome



Brushed Nickel

**Aurora
New bases!**

AURORA
Polymarble textured quad base
with square center drain



Available sizes: 48" x 36", 60" x 32", 60" x 36"



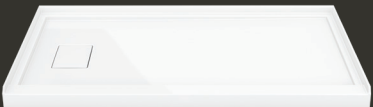
Slate
Available in
matte black & white



Wood
Available in
matte black & white

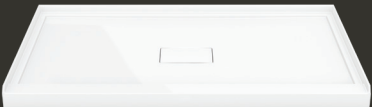


Stone
Available in
matte black & white



ADT

In-Line concealed side drain
model with 3 integrated flanges



ADT

In-Line concealed center drain
model with 3 integrated flanges



ADT

2 Sided concealed center drain
model with 2 integrated flanges

Available Sizes: 48" x 36" x 3", 60" x 36" x 3", 60" x 32" x 3"
Available in White.



ABV

Bowfront base, center drain model
Available in: 48" x 32" x 2 3/4", White finish

ABV fits exclusively with Fleurco™ shower doors.

Novara Bowfront 48, Apollo Bowfront 48

Novara Bowfront 48 with Return Panel, Apollo Bowfront 48 with Return Panel

Low profile base



AZM

Quad base, linear drain model
with 3 integrated flanges

Available Sizes:
48" x 36"
60" x 36"
60" x 32"

Available in White

Drain cover available in
Chrome & Brushed Nickel



Chrome



Brushed Nickel



ABT

In-Line center drain model
with 3 integrated flanges



ABT

In-Line side drain model
with 3 integrated flanges



ABT

2 Sided center drain model with
2 integrated flanges

Available Sizes: 48" x 36" x 3", 60" x 36" x 3", 60" x 32" x 3"
Available in White.



Low & narrow side
thresholds keep the
water from travelling
to the front threshold.

Duet

- Petite: 59" L x 31 ½" W x 23" H
- Grande: 67" L x 31 ½" W x 23" H

Model BZDU5931-18



Libretto

- Petite: 59" L x 31 ½" W x 23" H
- Grande: 67" L x 31 ½" W x 23" H

Model BZLI6731-18



Waltz

- Petite: 59" L x 31 ½" W x 23" H
- Grande: 67" L x 31 ½" W x 23" H

Model BZWA6731-18

Medley

- Petite: 59" L x 31 ½" W x 23" H
- Grande: 67" L x 31 ½" W x 23" H



Model BZME6731-18

Octave

- Petite: 59" L x 31 ½" W x 23" H
- Grande: 67" L x 31 ½" W x 23" H



Model BZOC5931-18

OPUS

- HIGH GLOSS CAST ACRYLIC SHEET- EASY TO CLEAN
- SPACIOUS BATHTUBS FOR EXTRA COMFORT
- ADJUSTABLE LEVELING FEET FOR PERFECT INSTALLATION

- CLEAN SLOTTED OVERFLOW ON ALL MODELS
- CHROME AND BRUSHED NICKEL DRAIN COVERS INCLUDED WITH ALL MODELS
- CUPC CERTIFIED
- 10 YEAR LIMITED WARRANTY

CLEAN SLOTTED OVERFLOW





Alto

New Model



- Petite: 58" L x 31 ½" W x 23" H
- Grande: 67" L x 31 ½" W x 23" H

Model BAL5831-18

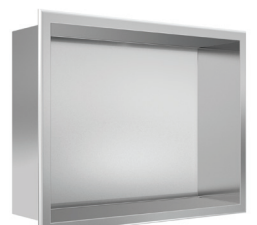
Lucite



Model VN2412-11



12" x 12"



16" x 12"



24" x 12"

Niche Shelves

ALL NICHE SHELVES
ARE AVAILABLE IN
CHROME & BRUSHED STAINLESS
FINISHES



Chrome



Brushed Stainless

AURA
Corner Shower Shelf



Model VAC0808-18-11

AURA
Double Shower Shelf



Model VA21105-18-11

AURA
Shower Shelf



Model VA1405-18-11

AURA
Double Corner Shower Shelf



Model VAC20808-18-11

CLARO
Corner Shelf
with Squeegee



Model VCC0808-18-11

DOMUS
Shelf with Adapter
with Hooks



Model VDH1105-18-11

DOMUS
Shelf
with Adapter



Model VD1105-18-11

veritas

ACCESSORIES



Model VE1805-18-11

ELOQUENCE
Shelf / Double Drawer



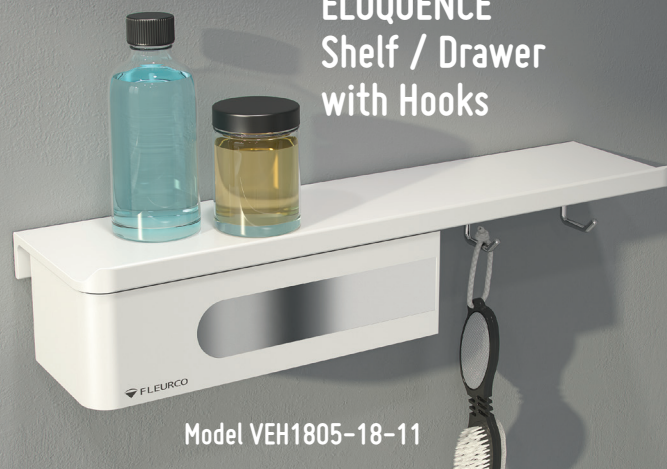
Model VE2005-18-11

ELOQUENCE
Shelf / Drawer
with Double Toilet
Roll Holder



Model VE1005-18-11

ELOQUENCE
Shelf / Drawer
with Hooks



Model VEH1805-18-11

ELOQUENCE
Corner Shelf / Drawer



Model VEC0808-18-11

DOMUS
Shower Shelf



Model VD1304-18-11



**Pandora
New Model**

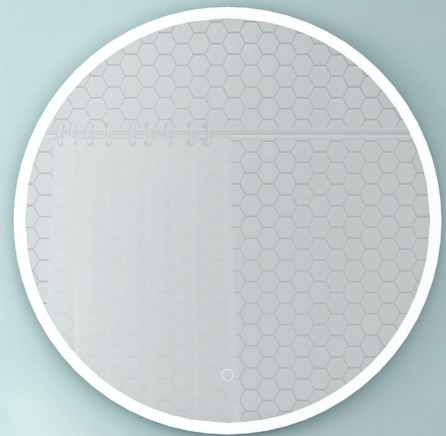
Model MHA2472



**New!
Medicine
Cabinets**

- WALL MOUNTED OR RECESSED INSTALLATION
- SOFT CLOSE DOORS
- 8MM, ULTRA CLEAR ADJUSTABLE GLASS SHELVES
- INTERIOR & EXTERIOR MIRRORS

**New!
Halo Round**



Model MHAR2424

luna

- **LED TECHNOLOGY**
ENERGY EFFICIENT AND COMPATIBLE WITH AN OPTIONAL WALL DIMMER
- **WARM WHITE LIGHT**
BEST LIGHTING FOR MAKEUP AND SHAVING
- **DEFOGGER PAD**
TARGETED AREA FOR FOG FREE REFLECTION
- **COPPER FREE MIRROR**
PREVENTS BLACK EDGE CORROSION
- **UL CERTIFIED**
ALL COMPONENTS AND PRODUCT PASS ALL UL LISTING CODES