

ARC^{inc.}

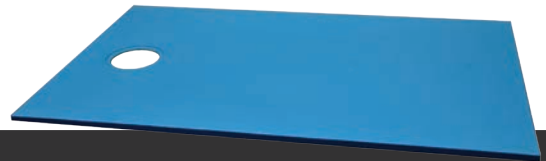
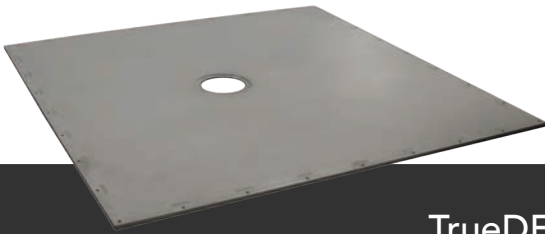
2017 Price List



NOTE: Shipping weights and dimensions in ARC's Price List are approximate. Actual shipping weights and dimensions are determined at time of shipment.

TrueDEK® Classic Shower Foundations

New Item Code	Old Item Code	Item Description	Shipping Weight	Shipping Dimensions	List Price
TB3535-S	21000	Classic Base 35½" x 35½"	34	39 x 39 x 3	\$1,089.00
TB3939-S	21008	Classic Base 39¾" x 39¾"	43	43 x 43 x 3	\$1,089.00
TB4530-S	21012	Classic Base 44¾" x 30¼"	39	48 x 34 x 3	\$1,089.00
TB4747-S	21018	Classic Base 47¼" x 47¼"	59	51 x 51 x 3	\$1,089.00
TB5132-S	21027	Classic Base 51¼" x 32¼"	43	55 x 36 x 3	\$1,089.00
TB5535-S	21028	Classic Base 55½" x 35½"	50	59 x 39 x 3	\$1,089.00
TB5932-S	21036	Classic Base 59" x 32¼"	50	62 x 36 x 3	\$1,089.00
TB5936-TR-S	na	Classic Base 59" x 36"	80	62 x 39 x 3	\$1,089.00
TB5947-S	21045	Classic Base 59" x 47¼" (ship LTL only)	72	63 x 51 x 3	\$1,169.00
TB5959-S	na	Classic Base 59" x 59" (ship LTL only)	84	63 x 63 x 3	\$1,169.00
TB7132-S	21050	Classic Base 70¾" x 32¼"	61	74 x 37 x 3	\$1,169.00



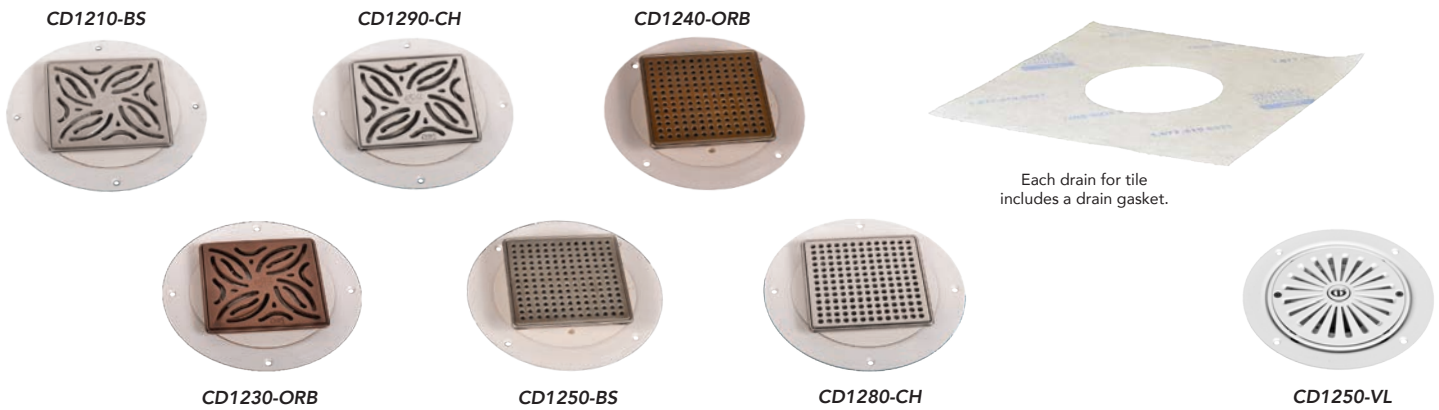
TrueDEK® Linear Shower Foundations

New Item Code	Old Item Code	Item Description	Shipping Weight	Shipping Dimensions	List Price
TB3535-L	21205	Linear Base 35½" x 35½"	35	37 x 37 x 4	\$1,284.00
TB3939-L	21206	Linear Base 39¾" x 39¾"	43	42 x 41 x 4	\$1,284.00
TB5132-L	21207	Linear Base 51¼" x 32¼"	45	53 x 34 x 4	\$1,284.00
TB4747-L	21208	Linear Base 47¼" x 47¼"	57	48 x 49 x 4	\$1,284.00



TrueDEK® Classic Drains

New Item Code	Old Item Code	Item Description	Shipping Weight	Shipping Dimensions	List Price
CD1210-BS	ARC120	Swirl pattern classic drain for tile — brushed stainless steel	4	9 x 9 x 5	\$165.00
CD1230-ORB	ARC123	Swirl pattern classic drain for tile — oil-rubbed bronze PVD finish	4	9 x 9 x 5	\$275.00
CD1290-CH	na	Swirl pattern classic drain for tile — polished stainless steel	4	9 x 9 x 5	\$195.00
CD1250-BS	na	Pinhole pattern classic drain for tile — brushed stainless steel	4	9 x 9 x 5	\$165.00
CD1240-ORB	na	Pinhole pattern classic drain for tile — oil-rubbed bronze PVD finish	4	9 x 9 x 5	\$275.00
CD1280-CH	na	Pinhole pattern classic drain for tile — polished stainless steel	4	9 x 9 x 5	\$195.00
CD1250-VL	25108	Classic drain for weldable vinyl — white ABS grate	2	9 x 9 x 5	\$29.00



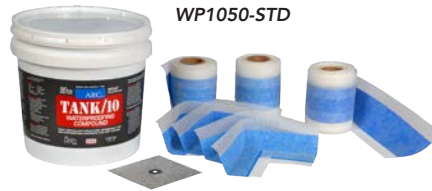
TrueDEK® Linear Drain Covers

New Item Code	Old Item Code	Item Description	Shipping Weight	Shipping Dimensions	List Price
LD2130-BS	21213	Linear Drain with Solid Cover — Brushed Stainless Steel	10	28 x 8 x 4	\$875.00
LD2150-BS	21215	Linear Drain with Slotted Cover — Brushed Stainless Steel	10	28 x 8 x 4	\$875.00
DC5500-PVC	ARC550	Drain Line Connector — 2" PVC	4	8 x 8 x 5	\$13.00



Waterproofing Kits

New Item Code	Old Item Code	Item Description	Shipping Weight	Shipping Dimensions	List Price
WP1000-PRE	na	Premium Waterproofing Kit	38	19 x 13 x 13	\$530.00
WP1050-STD	na	Standard Waterproofing Kit	28	17 x 13 x 11	\$450.00
WP1090-PRO	na	Pro Waterproofing Kit	15	13 x 11 x 10	\$220.00



A La Carte Waterproofing Supplies

New Item Code	Old Item Code	Item Description	Shipping Weight	Shipping Dimensions	List Price
WP2001-TNK	LB00115	Tank/10 Waterproofing — 1 gal.	13	11 x 11 x 11	\$139.00
WP2002-TNK	LB00114	Tank/10 Waterproofing — 2 gal.	23	11 x 11 x 11	\$225.00
WP3101-INT	na	Internal Corner — 1 corner	2	9 x 9 x 5	\$15.00
WP3112-INT	na	Internal Corner — 12 corners	2	9 x 9 x 5	\$150.00
WP3201-EXT	na	External Corner — 1 corner	2	10 x 10 x 4	\$15.00
WP3212-EXT	na	External Corner — 12 corners	3	10 x 10 x 4	\$150.00
WP3301-SUP	LB00120	Supply Gasket — 1 gasket	2	9 x 9 x 5	\$15.00
WP3312-SUP	na	Supply Gasket — 12 gaskets	3	9 x 9 x 5	\$150.00
WP3401-DRN	LB00119	Drain Gasket — 1 gasket	2	9 x 9 x 5	\$26.00
WP3425-JRT	LB00225	Joint Reinforcement Tape — 25 ft.	2	9 x 9 x 5	\$65.00
WP3450-JRT	LB00118	Joint Reinforcement Tape — 50 ft.	4	12 x 9 x 4	\$115.00
WP3490-JRT	na	Joint Reinforcement Tape — 490 ft.	16	17 x 17 x 6	\$999.00

Glass Shower Screens

New Item Code	Old Item Code	Item Description	Shipping Weight	Shipping Dimensions	List Price
GS2776-WM	LB00105	Wall Mounted Screen 27½" x 76¾" (ship LTL only)	60	79 x 30 x 3	\$679.00
GS3176-WM	LB00106	Wall Mounted Screen 31½" x 76¾" (ship LTL only)	62	79 x 34 x 3	\$719.00
GS3576-WM	LB00107	Wall Mounted Screen 35½" x 76¾" (ship LTL only)	70	79 x 37 x 3	\$749.00
GS3976-WM	LB00108	Wall Mounted Screen 39¾" x 76¾" (ship LTL only)	78	79 x 41 x 3	\$779.00
GS3977-FS	LB00112	Freestanding Screen 39¾" x 76¾" (ship LTL only)	81	79 x 41 x 3	\$939.00
GS0027-TB	LB00123	Tie Bar 27½"-long	2	31 x 2 x 2	\$89.00
GS0031-TB	LB00124	Tie Bar 31½"-long	2	35 x 2 x 2	\$139.00
GS0035-TB	LB00125	Tie Bar 35½"-long	2	40 x 2 x 2	\$149.00



Bendy Rails and Curtains

New Item Code	Old Item Code	Item Description	Color	Shipping Weight	Shipping Dimensions	List Price
BR0078-WH	24033	Bendy Rail 78"-long	white	5	81 x 4 x 4	\$115.00
BR0098-WH	24034	Bendy Rail 98"-long	white	6	100 x 4 x 4	\$129.00
BR0118-WH	24044	Bendy Rail 118"-long (ship LTL only)	white	7	120 x 4 x 4	\$145.00
CN7074-WH	24077	Curtain 70¾"-wide x 74¾"-long	white	2	11 x 8 x 4	\$59.00
CN7078-WH	24078	Curtain 70¾"-wide x 78¾"-long	white	2	11 x 8 x 4	\$64.00
CN7082-WH	24079	Curtain 70¾"-wide x 82½"-long	white	2	11 x 8 x 4	\$64.00
CN7099-WH	24092	Hook and Glide Connectors (11/pack)	white	1	6 x 5 x 1	\$12.00

Caregiver Doors

New Item Code	Old Item Code	Item Description	Frame/Trim Colors	Shipping Weight	Shipping Dimensions	List Price
CD2947-WG	91110N	Alcove Caregiver Door*	white/gray	42	67 x 44 x 4	\$1,439.00
CD2951-WG	91111N	Alcove Caregiver Door*	white/gray	42	67 x 44 x 4	\$1,439.00
CD2956-WG	91113N	Alcove Caregiver Door*	white/gray	43	67 x 44 x 4	\$1,439.00
CD2958-WG	91114N	Alcove Caregiver Door*	white/gray	44	67 x 44 x 4	\$1,439.00
CD2959-WB	15177	Alcove Caregiver Door**	white/black	43	67 x 44 x 4	\$1,099.00
CD2960-WG	91115N	Alcove Caregiver Door includes extra-wide compensator	white/gray	45	67 x 44 x 4	\$1,279.00
CD2010-WG	24130	Extra-wide Compensator fits doors with * above	white/gray	3	36 x 6 x 6	\$97.00
CD2011-WB	24139	Extra-wide Compensator fits door with ** above	white/black	3	32 x 6 x 6	\$97.00
CD2021-HG	ARC244	Door Handle — hinged fits doors with * above	white	2	8 x 8 x 4	\$45.00
CD2022-FX	ARC245	Door Handle — fixed fits doors with * above	white	2	8 x 8 x 4	\$45.00
CD2023-HG	ARC241	Door Handle — hinged fits door with ** above	white	2	8 x 8 x 4	\$45.00
CD2024-FX	ARC242	Door Handle — fixed fits door with ** above	white	2	8 x 8 x 4	\$45.00

Economy Shower Seats

New Item Code	Old Item Code	Item Description	Pad Color	Shipping Weight	Shipping Dimensions	List Price
ES2000-GR	02000P	Compact Seat	gray	8	17 x 16 x 5	\$259.00
ES2010-GR	02010P	Standard Seat	gray	9	20 x 20 x 5	\$339.00
ES2130-GR	02130P	Standard Seat w/ back & arms	gray	18	26 x 24 x 7	\$519.00
ES2200-BU	02200P	Compact Seat	blue	8	17 x 16 x 5	\$259.00
ES2210-BU	02210P	Standard Seat	blue	9	20 x 20 x 5	\$339.00
ES2230-BU	02230P	Standard Seat w/ back & arms	blue	18	26 x 24 x 7	\$519.00

Deluxe Shower Seats

New Item Code	Old Item Code	Item Description	Pad Color	Shipping Weight	Shipping Dimensions	List Price
BB1000-WH	na	MAXBench	na	27	26 x 31 x 4	\$798.00
DS4030-WS	04030	Wood Slatted Seat	na	16	20 x 19 x 6	\$559.00
DS4070-BU	04070P	Standard Seat	blue	15	21 x 19 x 6	\$369.00
DS4100-BU	04100P	Standard 'U' Seat	blue	20	20 x 19 x 6	\$399.00
DS4110-BU	04110P	Wide Seat	blue	18	25 x 21 x 7	\$449.00
DS4120-BU	04120P	Wide 'U' Seat	blue	18	25 x 21 x 7	\$479.00
DS4130-BU	04130P	Standard Seat w/ back & arms	blue	30	25 x 24 x 10	\$726.00
DS4140-BU	04140P	Wide Seat w/ back & arms	blue	34	30 x 27 x 11	\$839.00
DS4150-BU	04150P	Wide 'U' Seat w/ back & arms	blue	36	29 x 26 x 10	\$919.00
DS4160-BU	04160P	Standard 'U' Seat w/ back & arms	blue	30	25 x 24 x 10	\$789.00
DS4200-GR	04200P	Standard 'U' Seat	gray	20	20 x 19 x 6	\$399.00
DS4210-GR	04210P	Wide Seat	gray	18	25 x 21 x 7	\$449.00
DS4220-GR	04220P	Wide 'U' Seat	gray	18	25 x 20 x 6	\$479.00
DS4230-GR	04230P	Standard Seat w/ back & arms	gray	30	25 x 24 x 10	\$726.00
DS4240-GR	04240P	Wide Seat w/ back & arms	gray	34	30 x 27 x 11	\$839.00
DS4250-GR	04250P	Wide 'U' Seat w/ back & arms	gray	36	29 x 26 x 10	\$919.00
DS4260-GR	04260P	Standard 'U' Seat w/ back & arms	gray	30	25 x 24 x 10	\$789.00
DS4270-GR	04270P	Standard Seat	gray	15	21 x 19 x 6	\$369.00
DS4570-GR	04570P	Extra-wide Seat	gray	18	26 x 18 x 6	\$529.00
DS4580-BU	04580P	Extra-wide Seat	blue	18	26 x 18 x 6	\$529.00

Grab Bars & Supports

New Item Code	Old Item Code	Item Description	Color	Shipping Weight	Shipping Dimensions	List Price
GB1190-BU	01190	Padded Back Rest	blue	5	20 x 12 x 8	\$75.00
GB1191-GR	01190	Padded Back Rest	gray	5	20 x 12 x 8	\$75.00
GB1200-WH	01200	12" Flat End Grab Bar	white	1	19 x 4 x 4	\$31.00
GB1201-BR	01200	12" Flat End Grab Bar	brown	1	19 x 4 x 4	\$31.00
GB1210-WH	01210	18" Flat End Grab Bar	white	1	19 x 4 x 4	\$45.00
GB1211-BR	01210	18" Flat End Grab Bar	brown	1	19 x 4 x 4	\$45.00
GB1745-IV-L	01745	Newel Grab Bar — left	ivory	1	32 x 7 x 6	\$69.00
GB1746-IV-R	01745	Newel Grab Bar — right	ivory	1	32 x 7 x 6	\$69.00
GB1700-WH	01760	18" Cranked Grab Bar	white	1	19 x 4 x 4	\$23.00
GB1705-WH	01750	24" Cranked Grab Bar	white	2	26 x 4 x 4	\$32.00
GB1810-WH	01810	Fold-up Support — no leg	white	11	37 x 12 x 6	\$329.00
GB1820-WH	01820	Fold-up Support — fixed leg	white	11	37 x 12 x 6	\$299.00
GB1830-WH	01830	Fold-up Support — adjustable leg	white	11	37 x 12 x 6	\$369.00
GB1831-BU	01830	Fold-up Support — adjustable leg	blue	11	37 x 12 x 6	\$369.00
GB1832-SS	01830SS	Fold-up Support — adjustable leg	stainless steel	12	37 x 12 x 6	\$369.00
GB1900-WH	01900	12" Comfort Grip Grab Bar	white	2	16 x 4 x 3	\$44.00
GB1901-BU	01900	12" Comfort Grip Grab Bar	blue	2	16 x 4 x 3	\$44.00
GB1902-GR	01900	12" Comfort Grip Grab Bar	gray	2	16 x 4 x 3	\$44.00
GB1905-WH	01905	16" Comfort Grip Grab Bar	white	2	20 x 4 x 3	\$52.00
GB1906-BU	01905	16" Comfort Grip Grab Bar	blue	2	20 x 4 x 3	\$52.00
GB1907-GR	01905	16" Comfort Grip Grab Bar	gray	2	20 x 4 x 3	\$52.00

Grab Bars & Supports

New Item Code	Old Item Code	Item Description	Color	Shipping Weight	Shipping Dimensions	List Price
GB1910-WH	01910	18" Comfort Grip Grab Bar	white	2	22 x 4 x 3	\$54.00
GB1911-BU	01910	18" Comfort Grip Grab Bar	blue	2	22 x 4 x 3	\$54.00
GB1912-GR	01910	18" Comfort Grip Grab Bar	gray	2	22 x 4 x 3	\$54.00
GB1920-WH	01920	24" Comfort Grip Grab Bar	white	3	28 x 4 x 3	\$64.00
GB1921-BU	01920	24" Comfort Grip Grab Bar	blue	3	28 x 4 x 3	\$64.00
GB1922-GR	01920	24" Comfort Grip Grab Bar	gray	3	28 x 4 x 3	\$64.00
GB1930-WH	01930	32" Comfort Grip Grab Bar	white	4	36 x 4 x 3	\$73.00
GB1931-BU	01930	32" Comfort Grip Grab Bar	blue	4	36 x 4 x 3	\$73.00
GB1932-GR	01930	32" Comfort Grip Grab Bar	gray	4	36 x 4 x 3	\$73.00
GB1940-WH	01940	36" Comfort Grip Grab Bar	white	4	40 x 4 x 3	\$87.00
GB1941-BU	01940	36" Comfort Grip Grab Bar	blue	4	40 x 4 x 3	\$87.00
GB1942-GR	01940	36" Comfort Grip Grab Bar	gray	4	40 x 4 x 3	\$87.00
GB1950-WH	01950	42" Comfort Grip Grab Bar	white	5	46 x 4 x 3	\$99.00
GB1951-BU	01950	42" Comfort Grip Grab Bar	blue	5	46 x 4 x 3	\$99.00
GB1952-GR	01950	42" Comfort Grip Grab Bar	gray	5	46 x 4 x 3	\$99.00
GB1955-WH	01915	135° Angled Comfort Grip Grab Bar	white	3	22 x 10 x 6	\$108.00
GB1956-BU	01915	135° Angled Comfort Grip Grab Bar	blue	3	22 x 10 x 6	\$108.00
GB1960-WH	01925	90° Angled Comfort Grip Grab Bar	white	5	29 x 7 x 3	\$179.00
GB1961-BU	01925	90° Angled Comfort Grip Grab Bar	blue	5	29 x 7 x 3	\$179.00
GB1965-WH	01941	Cut-to-length Alcove Grab Bar Kit	white	15	40 x 8 x 5	\$489.00
GB1966-WH	01942	Cut-to-length Corner Grab Bar Kit	white	12	40 x 8 x 5	\$359.00
GB1967-WH	01943	Cut-to-length Extension Bar Kit	white	4	10 x 5 x 4	\$59.00

Terms & Conditions

PLACING ORDERS

Orders may be submitted by email to orders@arcfirst.net or by fax to 1-715-743-2738. Orders submitted to ARC, Inc. must be on the Buyer's valid purchase order form bearing the company's name, billing address, current email address, and the ship-to address including the phone number of the recipient (required by carriers for delivery purposes). No orders will be accepted other than in writing. Purchase orders must list the desired ARC item codes and the quantity of each item. ARC will make every reasonable effort to fill all orders, however, we do not guarantee that every product is in stock at the time of an order. We will inform Buyer of any backordered items and offer the opportunity to cancel or preserve the order. ARC reserves the right to discontinue items and add new items at any time without notice. All shipping weights described, other than those on actual shipping documentation, are approximate and intended solely to assist Buyers with estimating shipping costs.

CONDITIONS OF SALE

All sales are prepaid by credit card unless Buyer has an approved credit account with ARC, Inc. Terms of credit accounts are established by ARC, Inc. Payments on credit accounts must be made with a check, money order, or by ACH transfer. Payment of a credit account with a credit card requires pre-approval and will result in a 4% surcharge. Overdue amounts (that is, any amount not received by the due date shown on the invoice) are subject to a finance charge of 1.5% per month (18% per year). An administrative fee of fifty percent (50%) of the invoice total will be added to any interest charges on any overdue amount when payment is obtained using a collection agency. Returned checks are subject to a \$50.00 fee.

PRICING

Prices shown in ARC, Inc. publications are in US dollars. Prices do not include shipping, handling, or sales tax, which will be added to Buyer's invoice. Without a valid Reseller's Certificate on file at ARC, Inc., sales tax will be added to all invoices when applicable. All prices are subject to change without notice. All special offers or discounts are time limited to the month of issuance unless otherwise noted in writing by ARC, Inc. ARC, Inc. makes every effort to display accurate prices, however, in the event that an order is placed for any item priced incorrectly, and the error is discovered prior to shipping the item, ARC, Inc. reserves the right to correct the inaccuracy or cancel the order. Should this occur, ARC, Inc. will contact Buyer, inform Buyer of the error and provide the actual price of the item, at which time Buyer will have the option to either confirm the order at the actual price or cancel the order. The price of an item is not final until the item is shipped.

RETURNS

Returns require pre-approval. Please call ARC, Inc. to obtain a Return Authorization (RA) form. Returns are subject to a 35% restocking fee. Shipping charges are not refundable. In the event that a return is required, a valid Return Authorization number will be issued. An RA will not be issued more than sixty (60) days after the product's purchase date, except for approved stock rotations and other pre-approved arrangements with authorized ARC, Inc. distributors. Return Authorizations expire thirty (30) days after the date they are issued, and returns must be received by ARC, Inc. within that thirty (30) day period or no credit will be issued. The RA number must be clearly written on the outside of all shipping boxes and pallet wrapping. All merchandise must be returned 100% complete in original packaging with all product, parts, packaging material, manuals, and accessories included, and must be in "as new" saleable condition. All products must be returned freight prepaid to ARC, Inc. Incomplete or unauthorized returns will be refused. All returned product will be inspected, and, if deemed damaged or used, refunds will not be issued. Items cannot be returned if they were special ordered, made to customer specifications, or are non-inventory or non-stock items.

TECHNICAL ACCURACY

ARC, Inc. attempts to be as accurate as possible in describing product specifications, maintenance, usage, care, and installation. ARC, Inc. does not, however, warrant that product information or other content of any ARC, Inc. publication or website is accurate, complete, current, or error-free. If a product offered by ARC, Inc. is not as described, Buyer's sole remedy is to return it in unused condition for an exchange or refund of the original purchase price. All products must be returned freight prepaid to ARC, Inc. Shipping charges are not refundable.

FedEx, UPS, or SPEE DEE SHIPMENTS

Buyers must inspect any shipment upon arrival, and if the package is damaged, refuse the shipment. If the damaged products were shipped to Buyer on ARC, Inc.'s account, the carrier will return the shipment to ARC, Inc. and we will file a claim and promptly send a new shipment to Buyer; if the products were shipped to Buyer on an account other than ARC, Inc.'s, all returns and claims must be processed through that account holder. If Buyer finds concealed damage, call ARC, Inc. at once. Again, if the damaged products were shipped on ARC, Inc.'s account, we will instruct the carrier to pick up the package and return it to us for a claim, and we will reship Buyer's order; if products were shipped on a different account, all returns and claims must be processed through the holder of that shipping account.

Terms & Conditions

MOTOR FREIGHT SHIPMENTS

Safe delivery of a freight shipment is the responsibility of the carrier. Please examine your shipment carefully before signing the freight bill. By your acceptance of the shipment from the carrier, affirmed once you sign a freight bill, you acknowledge that the product has been delivered in good condition, relieving ARC, Inc. and the carrier from further responsibility. If damage is discovered, or if the number of pieces received does not match the number on the freight bill, do not accept the shipment without noting the shortage or damage on the freight bill and insist that the carrier's agent (the driver) sign and date the freight bill near the notation. Failure to complete these steps may jeopardize recovery of the goods or reimbursement for them, and relieve the carrier and ARC, Inc. from all responsibility. If any concealed damage or shortage is discovered while unpacking, leave the material and the packing as is and ask the carrier for a concealed damage or shortage inspection. Consult the carrier for the necessary claim form. When checking shipments, compare what was received with quantities listed on the packing list or invoice. If the carrier leaves the facility before you find a shortage or damage, contact ARC immediately—claims with motor freight companies must be made promptly. You must contact ARC, Inc. within five (5) business days after receipt of a shipment to report any issues. ARC, Inc. is not responsible for shortages or damage to goods that are not reported within five (5) business days after receipt of a shipment. Claims for loss or damaged material and transportation charges must not be deducted from any ARC, Inc. invoice and the payment of ARC, Inc. invoices must not be withheld awaiting adjustment of such claims since it is the function of the carrier to guarantee safe delivery and to remedy shortage or damage claims.

COPYRIGHT AND TRADEMARKS

All content, such as text, graphics, logos, icons, images, video and audio clips, digital downloads, and data, included in ARC, Inc. catalogs, brochures, flyers, websites, videos, and other branded materials, is the property of ARC, Inc. or a manufacturer of products sold by ARC, Inc., and is protected by international copyright laws. The use of such content is prohibited without the express written consent of ARC, Inc.

WARRANTIES AND LIABILITY

All manufacturer warranties are detailed on ARC, Inc.'s website: www.arcfirst.net. ARC, Inc. makes these warranties available, without recourse to ARC, Inc. to the extent permissible, to authorized distributors and dealers, and extends such warranties to the first retail purchaser who puts a product into service after purchasing it from an authorized distributor or dealer. No representative of ARC, Inc. is authorized to give or make any other representation or warranty or modify any warranty in any way.

The provisions of these warranties do not apply to products: a) used for purposes for which they are not designed or intended; b) which have been subjected to alteration, abuse, misuse, negligence, or accident; c) which have been improperly stored, installed, maintained, or operated; d) which have been damaged due to neglect or lack of proper maintenance, cleaning, or care; e) which have been damaged due to the use of inappropriate cleaners, solvents, abrasives, or other chemical or mechanical causes.

Proof of purchase is required for any warranty claim. Products shipped to ARC, Inc. for warranty service, replacement, or refund, that were not purchased from an authorized ARC, Inc. distributor or dealer, will not qualify for warranty service, and ARC, Inc. will hold such products only for a limited time and ship them back at the sender's cost upon their request after shipping and handling fees have been prepaid.

Buyer's sole and exclusive remedy against ARC, Inc. for any cause of action arising out of the sale or use of any product purchased from ARC, Inc. shall be replacement of the product or refund of the purchase price paid for the product. In no event shall ARC, Inc. be liable for special, indirect, incidental, or consequential damages howsoever arising, including without limitation, lost revenues or profits, labor costs, shipping and freight costs, or expenses incurred due to the installation, removal, or replacement of any product. Any cause of action for breach of warranty must be brought by Buyer, if at all, within one (1) year from the date the cause of action occurred. Any discrepancy in pricing or other charges shall be deemed waived by Buyer unless Buyer notifies ARC, Inc. thereof in writing within sixty (60) days from the date of invoice on which such disputed transaction is reflected.

In no event shall ARC, Inc. have any responsibility or liability to a Buyer for any failure or delay in performance by ARC, Inc. which results, directly or indirectly, in whole or in part, from any cause or circumstance beyond the reasonable control of ARC, Inc. Such causes and circumstances shall include, but are not limited to, acts of God, acts of Buyer, acts or orders of any governmental authority, strikes or other labor disputes, natural disasters, accidents, wars, civil disturbances, unavailability of supplies from usual suppliers, difficulties or delays in transportation, mail or delivery services, or any other cause beyond ARC, Inc.'s reasonable control.

SOLE AGREEMENT AND INTERPRETATION

The Terms and Conditions set forth herein, together with any additions or revisions which may be agreed in writing by ARC, Inc., embody the whole agreement of the parties and provide the only remedies available. There are no promises, terms, conditions, understandings, obligations, or agreements other than those contained herein. These Terms and Conditions, and any transactions or agreements to which they apply, shall be governed both as to interpretation and performance by the laws of the State of Wisconsin.

THE CURBLESS ADVANTAGE

ARC_{inc.}



TrueDEK[®] from ARC

Enlightened Shower Systems

Contact us: ARC, Inc.
7 Tiff Avenue
Neillsville, WI
54456-2100

1.877.319.6521 (t)
1.715.743.2738 (f)
orders@arcfirst.net
www.arcfirst.net