

Concealed Drawer Chart



Profile Specific

Door Styles

Antigua
Centennial
Hudson
Northbrook
Osage
Marcus
Portland
Quebec
Riverside
Romano
Villager
Zurich

Architectural Series

Door Styles

Donovan
Kensington
Morocco
Plymouth
Tiffany
Upton
Yorkton

Inset

Door Styles

Kingston

Concealed Drawer
Installed List Price:

\$308

Single/Double Door Vanities	Cabinet Size	Profile Specific	Architectural Series	Inset
VB/VS/LC	15" wide	CD12PS	CD9.5AS	CD12Inset
	18" wide	CD15PS	CD12.5AS	CD15Inset
	21" wide	CD18PS	CD15.5AS	CD18Inset
VTR/VTL/DRT/DLT	24" wide	CD10PS	CD8.5AS	CD10Inset
	27" wide	CD12PS	CD11.5AS	CD12Inset
	30" wide	CD15PS	CD12.5AS	CD15Inset
	33" wide	CD15.5PS	CD15.5AS	CD15.5Inset
VT & V/DT	45" wide	CD14PS	CD15.5AS	CD14Inset
	60" wide	CD15PS	CD13.75AS	CD15Inset
	66" wide	CD15.5PS	CD14.75AS	CD15.5Inset
Butt Door Vanities				
VB/VS/VR/LC	24" wide	CD21PS1	CD18.5AS	CD21Inset
	27" wide	CD24PS	CD21.5AS	CD24Inset
	30" wide	CD27PS	CD24.5AS	CD27Inset
	33" wide	CD30PS	CD27.5AS	CD30Inset
	36" wide	CD33PS	CD30.5AS	CD33Inset
VTR/VTL/DRT/DLT	36" wide	CD21PS	CD18.5AS	CD21Inset
	39" wide	CD24PS	CD21.5AS	CD24Inset
	42" wide	CD27PS	CD24.5AS	CD27Inset
VT & V/DT	48" wide	CD21PS	CD18.5AS	CD21Inset
	54" wide	CD27PS	CD24.5AS	CD27Inset
	72" wide	CD21PS	CD19.75AS	CD21Inset
VTM & V/MDT	60" wide	CD21PS	CD19.75AS	CD21Inset
	66" wide	CD24PS	CD22.75AS	CD24Inset
	72" wide	CD27PS	CD24.75AS	CD27Inset

General Section

Added Lighthouse and Morel
Published Terms
Deleted Bordeaux
Added Marcus and Portland

Furniture section

Added Lighthouse and Morel
Deleted Juliet Door Style
Page 9: Moved Wood Top from Juliet pages
Page 13: Deleted Juliet Specs.

Classic Section

Page 1: Added Lighthouse and Morel
Page 2: Added Overlay information in Door Sections
Added Portland Delete Bordeaux
Page 3: Added Marcus Doors
Page 5: Added Marcus and Portland
Page 7: Added Floating Shelves
Page 9: Added Marcus and Portland
Page 10: Price correction VS24T and VS30T
Page 12: Price correction VTR24T code 3
Page 27: Price correction WCC2430 Second column
Page 29: Price correction MC2233HR

Linea section

Page 1: Added Lighthouse and Morel
Page 13: Added Default Hardware for Marcus and Portland
Added price for Individual Selection Center Doors
Increased Selection price to include 2 new doors
Portland/Birch/Lighthouse and Marcus/Birch Morel
Color Chip Order form added Lighthouse and Morel Birch matte

bath spec & price

When ordering cabinetry please reference the following:

- (1) Specification:** Furniture: Premium(P)
Classic: Standard(S)/Premium(P)
Linea: Standard(S)/Premium(P)
- (2) Door Style:** Furniture:
Interlude(I), Legend(L), Madison(MA)
Classic:
Antigua(A), Centennial(C), Donovan(D), Hudson(H), Kensington(K), Kingston(KG), Marcus(MR),
Morocco(M), Northbrook(NB), Osage(O), Portland(PL), Plymouth(P), Quebec(Q), Riverside(RS), Romano(R),
Tiffany(T), Upton(U), Villager(V), Yorkton(Y), Zurich(Z)
Linea:
Arcadia(AR), Dresden(D), Insignia(I), Prism(PR)
Wood Doors: Osage(OX), Riverside(RSX)
- (3) Wood Species:** Furniture:
Select Alder(SA), Rustic Alder(RA), Birch(B), Cherry(C), Hickory(H), Oak(O), Quartersawn Oak(QO)
Classic:
Alder(SA), Rustic Alder(RA), Birch(B), Cherry(C), Hickory(H), Oak(O)
Linea:
3D Laminate
Wood Doors Only: Alder(SA), Birch(B), Cherry(C), Hickory(H), Oak(O)
- (4) Finish Color:** Furniture/Classic/Linea:
Autumn(A), Black (Matte Only)(BL), Brindle(B), Champagne(C), Dawn(D), Driftwood(DW), Eggshell(ES),
Fawn(F), Graphite(GR), Harvest(H), Lighthouse(LH), Loft(LO), Mocha(M), Morel (MO), Natural(N), Rose(R), Sable(S),
Sage(SG), Shale(SH), Toffee(T), White(W)
Furniture/Classic/Linea Glaze:
Espresso(E), Ginger(G), Ivory(I), Java(J), Pistachio(P), Vanilla(V)
- Wood Traits:** Furniture/Classic/Linea: Vintage available on glaze finishes is a Distressing Package which includes
rub thru, worn edges and birdpecking. Available on Legend and Madison Styles.
(Quick Response Sample Door(QRSD) recommended to show distressing)
- 3D Laminate:** Linea: Cordovan Cherry(CC), Dark Chocolate(DC), Hard Rock Maple(HRM), Light Mahogany(LM),
Linen(L), Macassar(MA), Queensland Oak(Q), Wenge(WE), White(W) Matte. White Ash(WA).
Accent Front Colors(AFC): Caribbean White(CW) High Gloss, High Gloss Steel(HGS), Light Blue Metallic(LBM),
Light Green Metallic(LGM).
- (6) Finish Sheen:** Furniture/Classic Sheen/Linea:
Semi-Gloss, Matte available at no charge, specify in the sheen column on order form.
- (7) Model number:** Reference Sku from spec

(8) Hardware number if different than standard. Leg option specify nomenclature if applicable.

Note: Reference Oasis section for ordering Cultured Marble Tops.

Include FAX number and/or Email when ordering. Online ordering receives additional 1% discount call Dealer Service for details.

To access infonet and view online orders, ordering information, ship dates, installation instructions, marketing materials etc.:

Log into www.berch.com website, at the bottom of the page there is a "Dealer login" you will need a password to access infonet.

If you need help with your password please call bath dealer services (319)268-2590 for assistance.

Terms: Net 30 days from date of invoice, subject to credit approval. An additional 1% discount is allowed for payment in 10 days. Invoices not paid in 30 days will be subject to a 1.1/2% per month finance charge, and may result in subsequent orders being held for production and/or shipment. All orders are shipped FOB Waterloo, Iowa.

Warranty: Bertch Cabinet Mfg., Inc. warrants its products to be free from defects in material or workmanship for as long as they are owned by the original purchaser. Color variations occur due to photography and printing. Please visit your Authorized Dealer to view samples.

cabinet specifications

FURNITURE



FACE FRAMES: are assembled from a quality, variety of select hardwoods, blind mortise and tenoned, glued and pinned. They are then sanded to a uniform thickness and machined to receive the side panels.

INTERIORS: finished with select hardwood or hardwood veneer in matching finish to exterior. Paneled ends are 3/4" veneer core plywood securely fastened to the front frame with tongue and groove, glued the entire length of the end panel and pressure clamped. Reinforcing corner blocks are added to the base cabinets at points of stress. Floors are 1/2" veneer core plywood finished to match.

BACKS: are 1/4" hardwood veneer core plywood.

SHELVES: Adjustable glass in apothecary & wall cabinets.

DRAWER BOXES: are constructed using solid 5/8" maple or birch dovetailed components smoothly sanded and finished. Drawer bottoms are 1/4" birch or maple plywood.

DRAWER SYSTEM: softmotion full extension undermount drawer glides allow an extra 3" in length to the actual drawer box on " deep base cabinets.

DOORS AND DRAWER FRONTS: are completely constructed in-house using a variety of select hardwoods and veneers. All doors and drawer fronts are machined and then hand-sanded.

FINISH: hand sanding then staining, followed by a coat of sealer, then sanded. Clear topcoat is the final layer. Solid finishes consist of primer coats and 1 enamel topcoat. Glaze finishes consist of 2 primer coats and glazing followed with a clear topcoat.

HINGES: Softmotion self-closing.

DECORATIVE HARDWARE: is included n/c as the final touch. See hardware page for options.

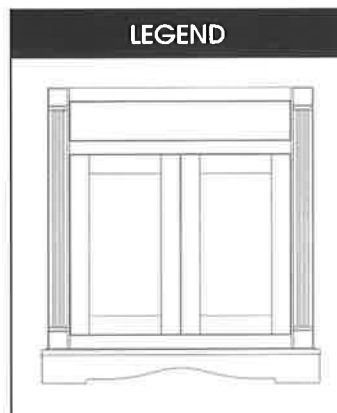
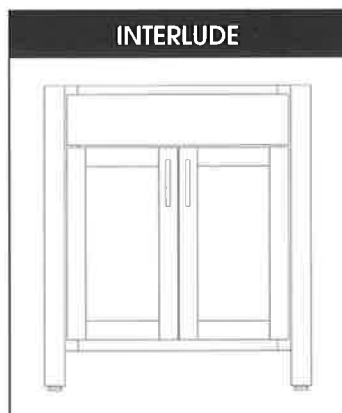
Wood Species:	Select Alder(SA), Rustic Alder (RA), Birch(B), Cherry(C), Hickory(H), Oak(O), Quartersawn Oak(QO)
Finish Color:	Autumn(A), Black(BL)Matte Only, Brindle(B), Champagne(C), Dawn(D), Driftwood(DW), Eggshell(ES), Fawn(F), Graphite(GR), Harvest(H), Lighthouse (LH), Loff(LO), Mocha(M), Morel (MO), Natural(N), Rose(R), Sable(S), Sage(SG), Shale(SH), Toffee(T), White(W)
	Glazes: Espresso(E), Ginger(G), Ivory(I), Java(J), Pistachio(P), Vanilla(V)
Wood Traits:	Available Legend and Madison glaze finish only. Vintage (Distressing including rub-through, worn corners and birdpecking.)
Finish Sheen:	Semi-Gloss, Matte available at no charge, specify in the sheen column on order form.
Model number:	Reference Sku from spec

Door Insert (Interlude & Legend Styles Only): Textures: Frost, Pearl, Grass, Pulse \$120 list per vanity door, \$142 list per apothecary door or panel (Note in special comments, number of doors and texture of panel following cabinet)

Hardware number if different than standard.

Please include FAX number and Email when ordering.

furniture styles





bertch furniture Interlude



Interlude is a contemporary style perfect for any decor.

Textured acrylic door insert available in Interlude and Legend Styles.
Cost \$120 list/vanity door, \$142 list/apothecary door or panel.
Textures available: Frost, Pearl, Grass, Pulse.

(Furniture pieces are designed to be stand alone, they are not meant to be joined into an ensemble.)

WOOD SPECIES	ALDER, BIRCH, HICKORY, OAK, RUSTIC ALDER		CHERRY QUARTERSAWN OAK	
				
CABINET SPECIFICATIONS				
FINISH	STAIN	GLAZE	STAIN	GLAZE

FURNITURE SINK TABLE 31" HIGH X 21" DEEP 18" D AVAILABLE SKU



31" High Standard
Includes Brushed Chrome Bar
28" High Available Specify (S)
FST2421
FST3021
FST3621

FST2421	902	1037	955	1099
FST3021	1047	1205	1100	1266
FST3621	1182	1360	1246	1433
FST2421S	902	1037	955	1099
FST3021S	1047	1205	1100	1266
FST3621S	1182	1360	1246	1433

FURNITURE SINK TABLE W/DRAWER 31" HIGH X 21" D, 18" D AVAILABLE SKU



31" High Standard
28" High Available Specify (S)
Functional Drawer
FSTD24
FSTD30
FSTD36

FSTD24	1192	1369	1270	1459
FSTD30	1383	1591	1473	1695
FSTD36	1561	1796	1663	1914
FSTD24S	1192	1369	1270	1459
FSTD30S	1383	1591	1473	1695
FSTD36S	1561	1796	1663	1914

FURNITURE VANITY SINK TABLE 34 1/2" H X 21" D 18" D AVAILABLE SKU



FVST24
FVST27
FVST30
FVST33
FVST36

FVST24	1579	1726	1668	1815
FVST27	1639	1785	1728	1873
FVST30	1837	1983	1925	2072
FVST33	1975	2120	2064	2209
FVST36	2113	2259	2202	2348

FURNITURE VANITY DRAWERS 34 1/2" HIGH X 21" DEEP SKU



Vanity Single Door 2 Drawer
Drawers Right
Specify Drawer Left (FVTL)
FVTR24
FVTR27
FVTR30
FVTR33
FVTR36

FVTR24	1698	1892	1817	2011
FVTR27	1837	2030	1955	2149
FVTR30	1975	2169	2093	2286
FVTR33	2113	2307	2231	2426
FVTR36	2252	2446	2371	2564



Single Door Vanity 4 Drawer
Hinged Right
Specify Hinge Left (FV4D42HL)
FV4D42HR

FV4D42HR	2627	2917	2804	3095
----------	------	------	------	------



Buff Door Vanity 4 Drawer
FV4D45
FV4D48

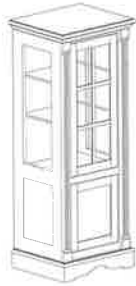
FV4D45	2744	3085	2952	3291
FV4D48	2842	3183	3050	3389

(Furniture pieces are designed to be stand alone, they are not meant to be joined into an ensemble.)

Textured acrylic door insert available in Interlude and Legend Styles.
Cost \$120 list/vanity door, \$142 list/apothecary door or panel.
Textures available: Frost, Pearl, Grass, Pulse.

WOOD SPECIES	ALDER, BIRCH, HICKORY, OAK, RUSTIC ALDER			CHERRY QUARTERSAWN OAK		
CABINET SPECIFICATIONS						
FINISH	STAIN	GLAZE	VINTAGE GLAZE	STAIN	GLAZE	VINTAGE GLAZE

LEGEND APOTHECARY CABINET 53" HIGH, 15" DEEP **SKU**



Glass Shelves
Upper Cabinet Clear Glass
Side Panels and Door
FAC18HR

(toe space open)

FAC18HR	2244	2581	2676	2436	2801	2897
---------	------	------	------	------	------	------

LEGEND DELUXE FRAMED MIRROR BEVELED MIRROR **SKU**



Moulding extends approx.
3" high & 2" wider than mirror

FDFM2436
FDFM3036
FDFM3636
FDFM4836

FDFM2436	611	705	766	643	741	803
FDFM3036	634	729	809	667	766	846
FDFM3636	670	771	866	707	813	908
FDFM4836	749	862	981	788	908	1027

LEGEND MEDICINE CABINET BEVELED MIRROR **SKU**



4 1/4" Deep
Moulding extends 3" high and
2" wider than cabinet size.

Swing Door
3 Adj. Shelves
FMC2433

FMC2433HR	943	1084	1147	991	1140	1203
-----------	-----	------	------	-----	------	------



Tri-View
9 Adj. Shelves
FTV3033
FTV3633
FTV4833

FTV3033	962	1105	1185	1007	1159	1239
FTV3633	1021	1174	1270	1071	1233	1328
FTV4833	1304	1499	1617	1366	1570	1689

FURNITURE WOOD TOP **SKU**



No cutout
No Backsplash
FWT32X22N
FWT38X22N
FWT50X22N

FWT32X22N	466	536	576	504	578	617
FWT38X22N	569	652	700	613	706	753
FWT50X22N	773	891	949	836	962	1022

Note: Base moulding adds 2" width and 1" depth to box
 Madison vanity requires Custom Oasis Top see below
 (Standard Oasis top configurations will not fit Madison)
 On base units Drawers Right (VTR) is standard,
 "Drawers Left" is available, specify (VTL).
 (Furniture pieces are designed to be stand alone,
 they are not meant to be joined into an ensemble.)

		WOOD SPECIES	ALDER, BIRCH, HICKORY, OAK, RUSTIC ALDER			CHERRY QUARTERSAWN OAK			
		CABINET SPECIFICATIONS							
		FINISH	STAIN	GLAZE	VINTAGE GLAZE	STAIN	GLAZE	VINTAGE GLAZE	
MADISON VANITY BASE 34 1/2" HIGH, 21" DEEP - 18" AVAILABLE		SKU							
	3 Drawer Vanity Base V3D24	V3D24	2755	2857	2952	2981	3085	3178	
	Single Door Vanity Base with Drawer Hinge Left Available Specify (HL) VB24HR VB30HR	VB24HR VB30HR	2541 2677	2638 2773	2718 2869	2767 2924	2864 3021	2944 3117	
	Butt Doors with Drawer VB36 VB42	VB36 VB42	2815 2938	2930 3062	3056 3204	3079 3223	3194 3347	3320 3488	
	Double Doors with Drawers VB48	VB48	3032	3167	3323	3337	3472	3629	
MADISON VANITY SINK 34 1/2" HIGH, 21" DEEP - 18" AVAILABLE		SKU							
	Single Door Hinge Left Available Specify (HL) Standard Oasis will not fit see below Reference Oasis Tops below VS24HR VS30HR	VS24HR VS30HR	2396 2495	2493 2592	2572 2687	2622 2743	2719 2839	2799 2935	
	Butt Doors Standard Oasis will not fit see below Reference Oasis Tops below VS36 VS42	VS36 VS42	2667 2809	2782 2933	2908 3074	2930 3095	3047 3217	3171 3360	
	Double Doors Standard Oasis will not fit Reference Oasis Tops below VS48	VS48	2929	3063	3220	3235	3368	3525	
	Single Door 2 Drawers Drawers Left Specify (VTL) Standard Oasis will not fit Reference Oasis Tops below VTR36	VTR36 VTR42 VTR48	2998 3134 3456	3143 3305 3636	3270 3448 3795	3262 3419 3762	3408 3589 3942	3533 3732 4101	
	Butt Doors VTR42 VTR48								
	Butt Doors/4 Drawer Standard Oasis will not fit Reference Oasis Tops VT60								
			Custom top: 1 1/4" thick, options include: bowl shape, edge treatment, finish (gloss or matte) and faucet drilling.						
			Oasis		Faux Granite				
					Marble/Solid		Onyx		Tella Bella
					Gloss	Matte	Gloss	Matte	Gloss/Matte
			Custom VS24	1177	1270	1354	1511	1317	
			Custom VS30	1270	1376	1474	1654	1521	
			Custom VS36	1384	1503	1617	1818	1666	
			Custom VS42	1502	1635	1764	1992	1823	
			Custom VS48	1611	1759	1900	2148	1963	
			Custom VT60	1753	1944	2128	2453	2209	
			Custom VM60	1804	1988	2173	2499	2253	

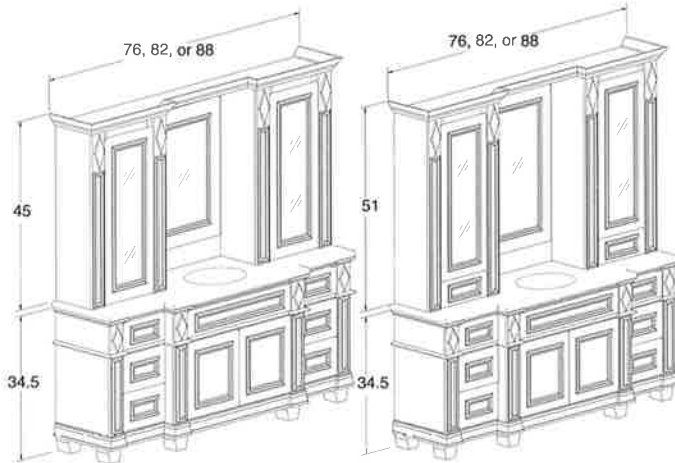
Luxurious Designed Bathroom Suites
72"-84" Width Available
(Crown moulding adds 4" to width)

Note: Base moulding adds 2" width and 1" depth to box
42" & 48" Walls
Pricing available for marble top.

WOOD SPECIES	ALDER, BIRCH, HICKORY, OAK, RUSTIC ALDER			CHERRY QUARTERSAWN OAK		
CABINET SPECIFICATIONS						
FINISH	STAIN	GLAZE	VINTAGE GLAZE	STAIN	GLAZE	VINTAGE GLAZE

MADISON SUITES SKU

Moulded Mirror, Antique Glass Door with Adjustable Glass Shelves and Flyover Lights(F) Brushed Chrome Lights Vanity all one piece



VT7242F
VT7842F
VT8442F

VT7248F
VT7848F
VT8448F

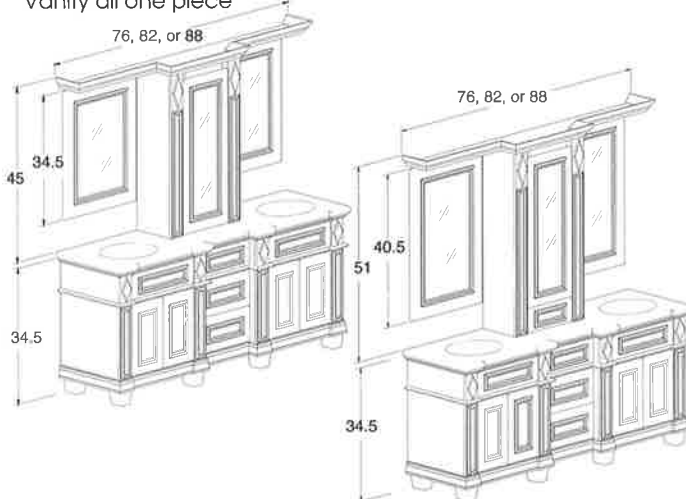
VT7242F	11523	12026	12404	12428	12932	13310
VT7842F	12029	12560	12971	12985	13514	13926
VT8442F	12464	13052	13493	13470	14056	14499
VT7248F	11942	12529	12907	12846	13433	13812
VT7848F	12448	13034	13445	13403	13990	14401
VT8448F	12883	13470	13913	13889	14476	14918

Oasis

	Marble/Solid		Onyx		Faux Granite
	Gloss	Matte	Gloss	Matte	Tella Bella Gloss/Matte
Custom VT72	1782	1999	2205	2572	2295
Custom VT78	1782	1999	2205	2572	2295
Custom VT84	1959	2204	2435	2846	2540

Custom top is 1 1/4" thick, options include:
bowl shape, edge treatment, finish(gloss or matte) and faucet drilling.
(Design Note: VM7248 will not accommodate the oval or rectangular nonrecessed bowl shape)

Hinge Left available specify (HL)
Vanity all one piece



VM7242F-HR
VM7842F-HR
VM8442F-HR

VM7248F-HR
VM7848F-HR
VM8448F-HR

VM7242F-HR	10471	11058	11437	11375	11964	12342
VM7842F-HR	10902	11487	11898	11856	12444	12854
VM8442F-HR	11690	12275	12718	12694	13281	13725
VM7248F-HR	10681	11268	11647	11586	12171	12552
VM7848F-HR	11111	11698	12109	12066	12652	13063
VM8448F-HR	11898	12485	12929	12905	13490	13934

Oasis

	Marble/Solid		Onyx		Faux Granite
	Gloss	Matte	Gloss	Matte	Tella Bella Gloss/Matte
Custom VM72	1782	1999	2205	2572	2295
Custom VM78	1782	1999	2205	2572	2295
Custom VM84	1959	2204	2435	2846	2540

Custom top is 1 1/4" thick, options include:
bowl shape, edge treatment, finish(gloss or matte) and faucet drilling.
(Design Note: VM7248 will not accommodate the oval or rectangular nonrecessed bowl shape)

CLASSIC (premium/standard)



**Vanities built with Standard specifications unless specified Premium.*

FACE FRAMES: are assembled from a high quality, variety of select hardwoods, blind mortise and tenoned, glued and pinned. They are sanded to a uniform thickness and machined to receive side panels.



SIDES Premium: 3/4" veneer core plywood with select natural birch interior & hard wood veneer on the exterior.



SIDES Standard: 1/2" thick plywood with natural birch woodgrain laminate interior and select hardwood veneer on the exterior. The sides for both the premium and standard are securely fastened to the front frame with tongue and groove, glued along the entire length of the end panel and pressure clamped. Reinforcing corner blocks are added to the base cabinets at points of stress.



FLOORS Premium: 1/2" natural birch Plywood.
All floors are glued and then stapled to the side panels.



FLOORS Standard: 1/2" natural birch woodgrain laminate.
All floors are glued and then stapled to the side panels.



BACKS Premium: are 1/4" birch plywood.



BACKS Standard: are 1/8" birch woodgrain laminate.



INTERIORS Premium: are completely finished in natural birch on all cabinets.



INTERIORS Standard: are birch woodgrain laminate.

TOEKICKS: are 4 1/2" tall, constructed of high quality 1/2" material.



SHELVES Premium: are 1/2" particleboard core birch plywood, selected for stability.



SHELVES Standard: are 1/2" particleboard birch woodgrain laminate, selected for stability.

DOORS AND DRAWER FRONTS: are completely constructed in-house using a variety of select hardwoods and veneers. All doors and drawer fronts are machined and then hand-sanded.

DRAWER BOXES: are constructed using solid 5/8" birch or maple dovetailed components smoothly sanded and finished. Drawer bottoms are 1/4" birch plywood.



DRAWER SYSTEM Premium: softmotion full extension under mount drawer glides allow an extra 3" in length to the actual drawer box on 21" deep base cabinets.



DRAWER SYSTEM Standard: epoxy coated steel on nylon bearing rollers. undermount 3/4" extension.

FINISH: hand sanding then staining, followed by a coat of sealer, then sanded. Clear topcoat is the final layer. Solid finishes consist of primer coats and 1 enamel topcoat. Glaze finishes consist of 2 primer coats and glazing followed with a clear topcoat.



HINGES Premium: Fully Concealed Softmotion self-closing.

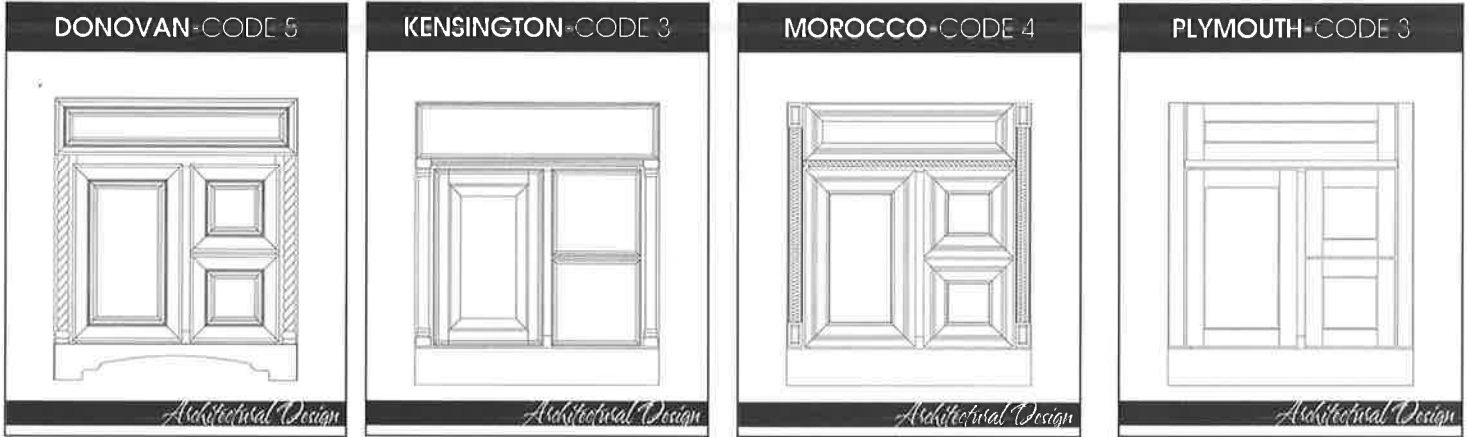


HINGES Standard: Are fully concealed and self-closing.

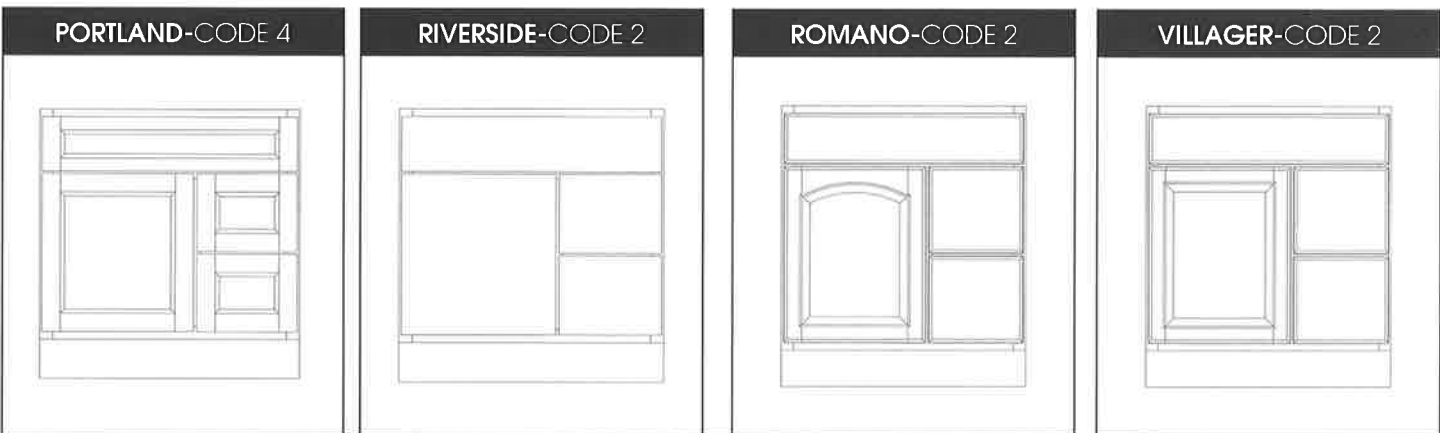
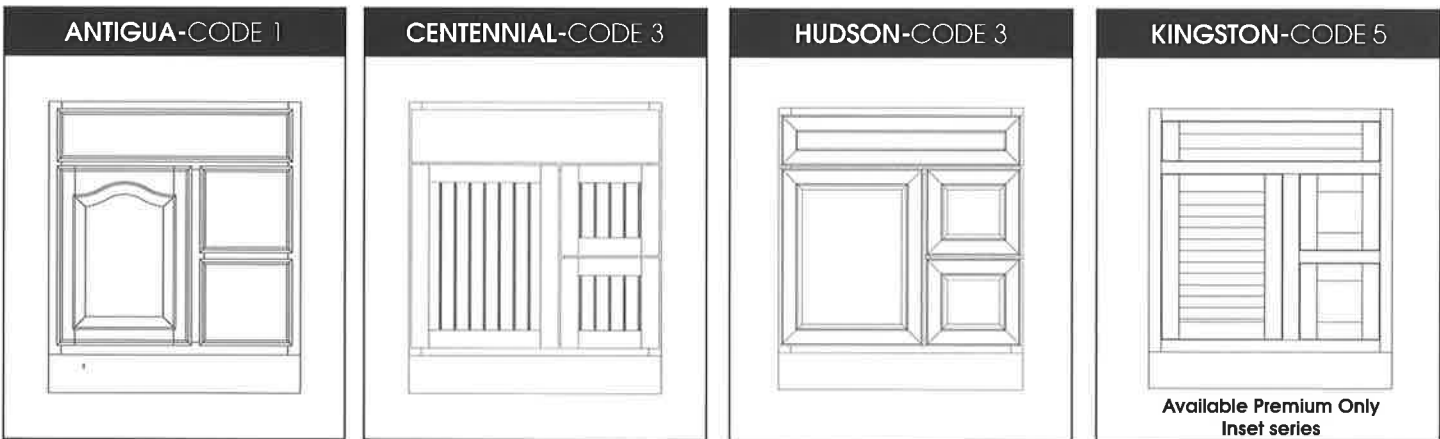
DECORATIVE HARDWARE: is included n/c as the final touch. See hardware page for options.

Wood Species:	Select Alder(SA), Rustic Alder(RA) (Riverside n/a), Birch(B), Cherry(C), Hickory(H), Oak(O)
Finish Color:	Autumn(A), Black(BL)Matte Only, Brindle(B), Champagne(C), Dawn(D), Driftwood (DW), Eggshell(ES), Fawn(F), Graphite(GR), Harvest(H), Lighthouse(LH), Loft(LO), Mocha(M), Morel(MO), Natural(N), Rose(R), Sable(S), Sage(SG), Shale(SH), Toffee(T), White(W) Glazes: Espresso(E), Ginger(G), Ivory(I), Java(J), Pistachio(P), Vanilla(V)
Wood Traits:	Vintage available on glaze finishes. (Quick Response Sample Door (QRS) recommended to show distressing)
Finish Sheen:	Semi-Gloss, Matte available at no charge, specify in the sheen column on order form.
Model number:	Reference Sku from spec
Hardware number if different than standard.	

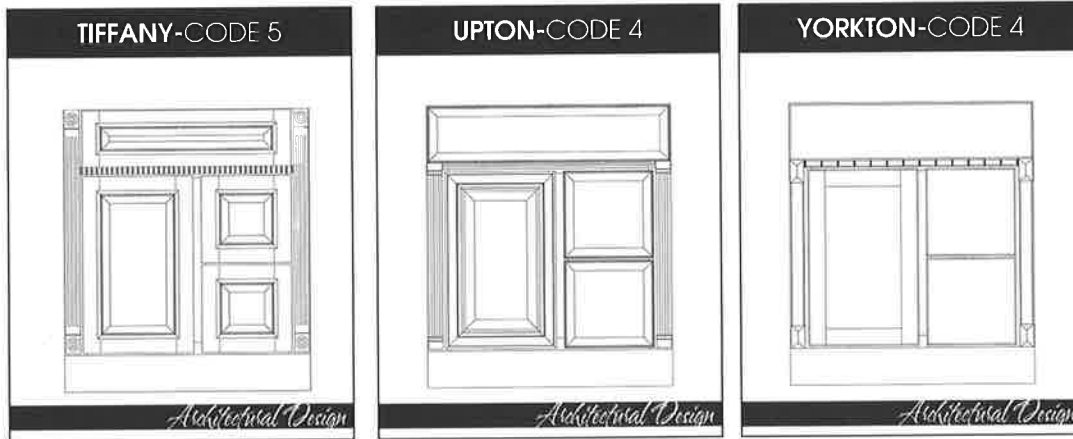
Architectural Design Includes overlays, mouldings and rosettes or plinth blocks (Applied Overlay)



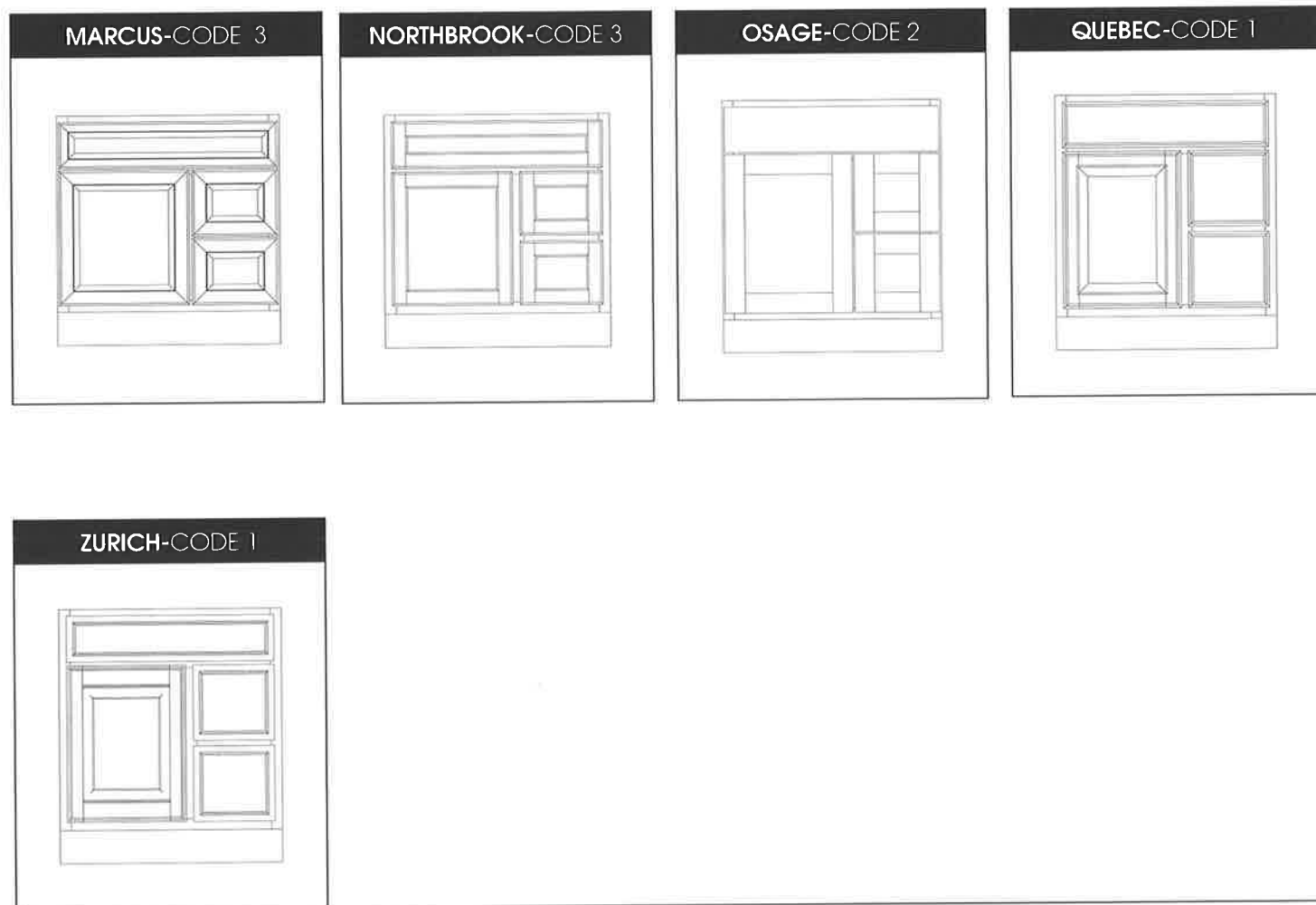
Profile Specific Vanity Styles/ (Standard and Full Overlay)



- *Architectural Design* Includes overlays, mouldings and rosettes or plinth blocks (Applied Overlay)

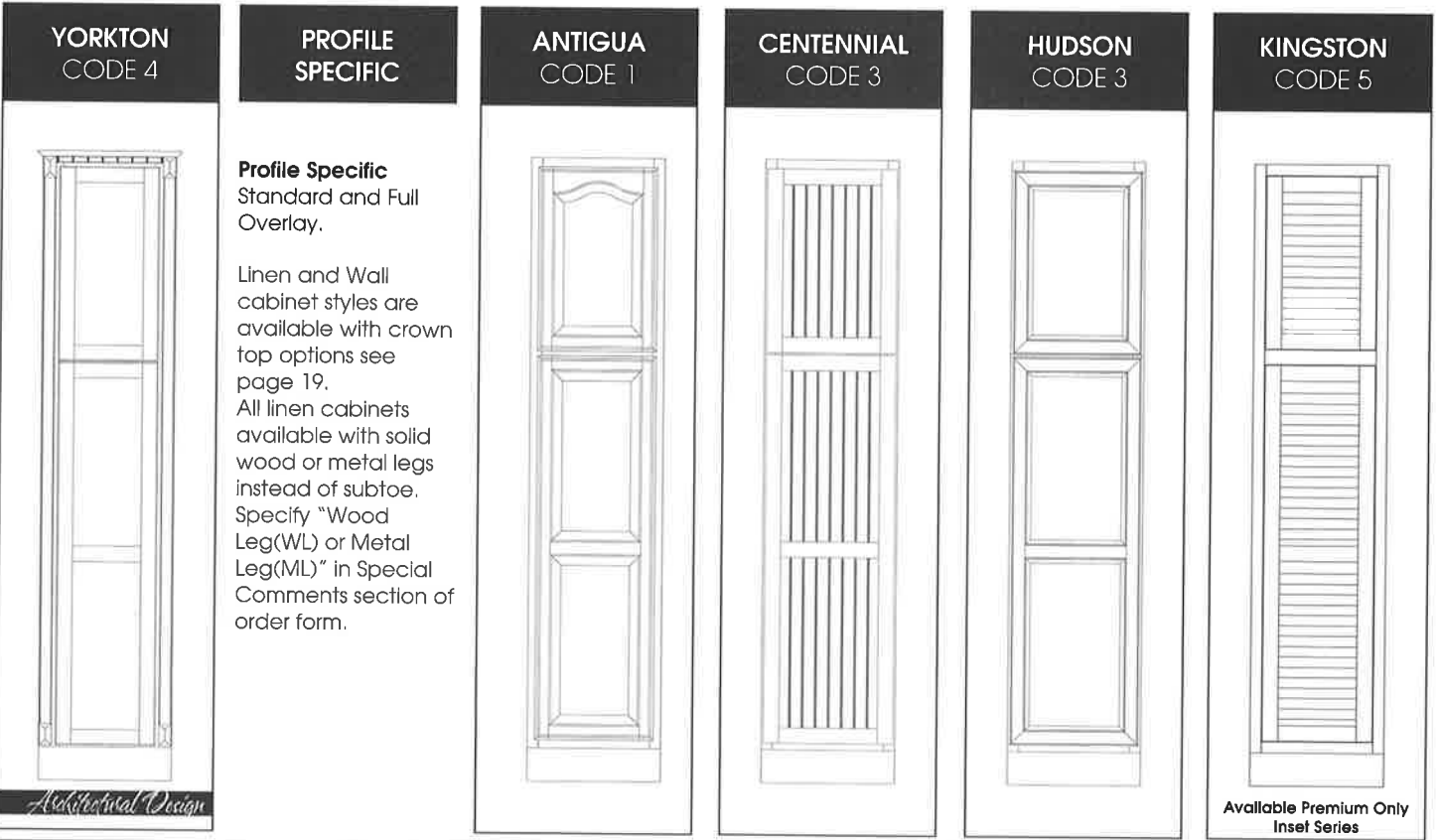
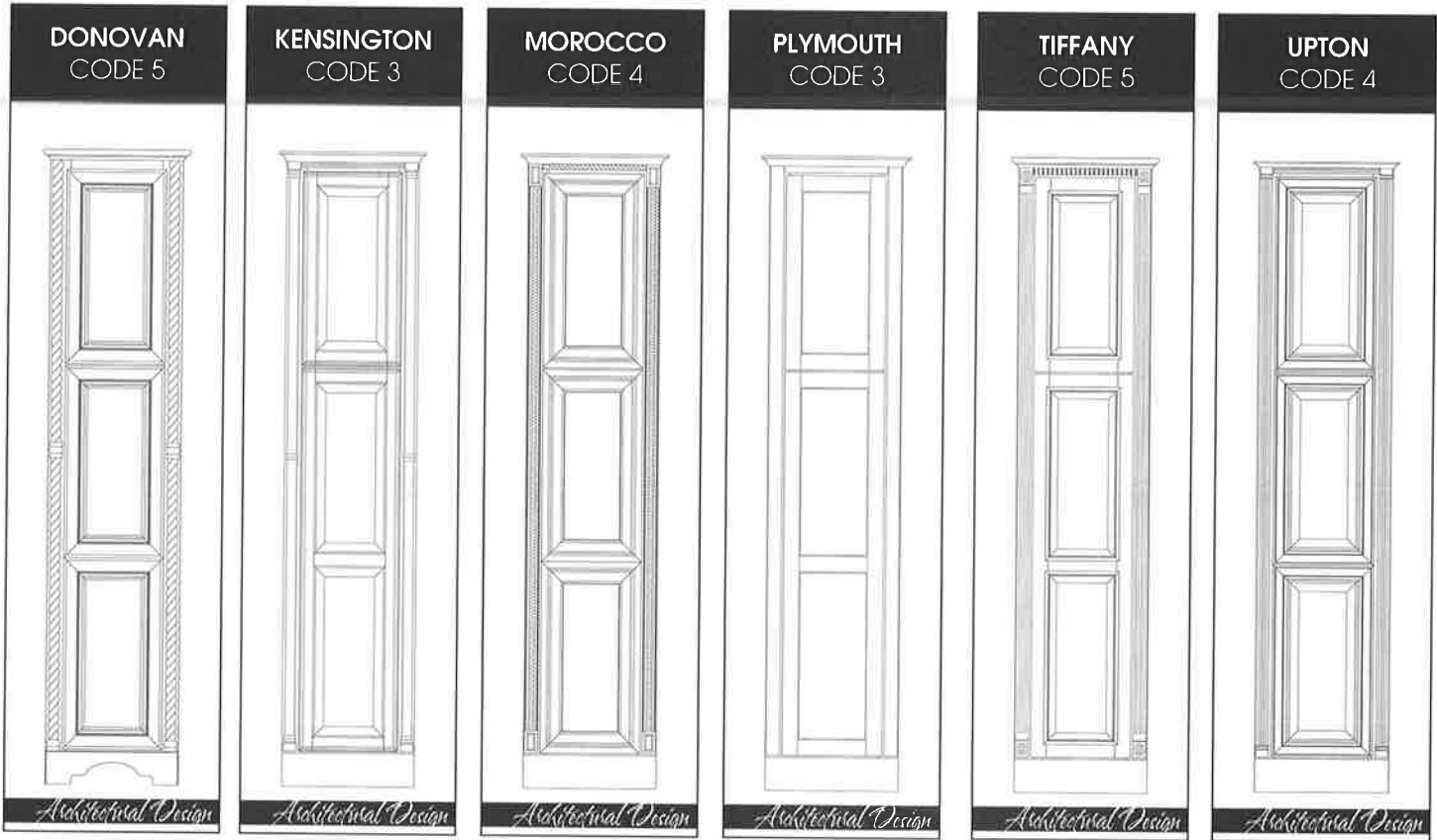


Profile Specific Vanity Styles/ (Standard and Full Overlay)



Architectural Design

Includes overlays, mouldings and rosettes or plinth blocks. (Applied Overlay)
Integral Crown Top adds 1 1/2" to Height and 2" to width.

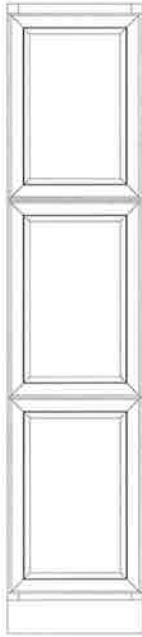


**PROFILE
 SPECIFIC**

Profile Specific
 Standard and Full
 Overlay.

Linen and Wall
 cabinet styles are
 available with crown
 top options see
 page 19.
 All linen cabinets
 available with solid
 wood or metal legs
 instead of subtoe.
 Specify "Wood
 Leg(WL) or Metal
 Leg(ML)" in Special
 Comments section of
 order form.

**MARCUS
 CODE 3**



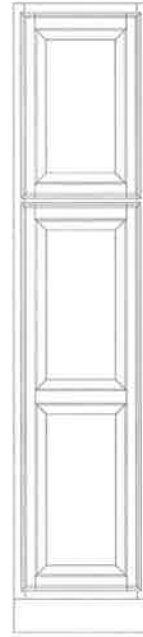
**NORTHBROOK
 CODE 3**



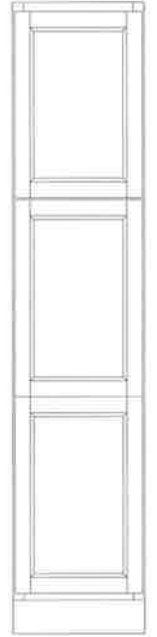
**OSAGE
 CODE 2**



**QUEBEC
 CODE 1**



**PORTLAND
 CODE 4**



**RIVERSIDE
 CODE 2**



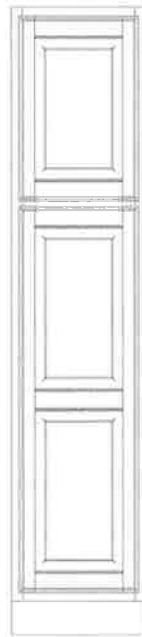
**ROMANO
 CODE 2**



**VILLAGER
 CODE 2**



**ZURICH
 CODE 1**



BASE AND LINEN INTERIOR ACCESSORIES

Available to fit Classic styles in either Standard or Premium Construction. All accessories feature full extension soft close glides. May be purchased installed (in units specified below) or as a separate kit. Specify in Special Comments.

CONCEALED DRAWER



Vanities: Concealed Drawers are available in all vanities with doors (exception DCVS's & VH's), 15" – 72" widths, 18" & 21" depths.

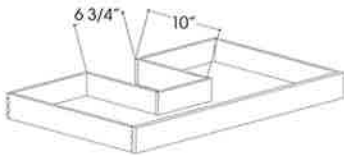
Note: One Concealed Drawer per door section can be ordered.

Linin Cabinets: Concealed Drawers are available in all linen cabinets and in all widths (15" - 36"), and in 18" & 21" depths. 4 Concealed Drawers are available to order per cabinet the first one will be mounted to the floor, all additional Concealed Drawers will be mounted onto the 3/4" thick adjustable shelves.

Specify "Concealed Drawer" in Special Comments. For pricing add \$308 list each to cabinet price.

Kits available, specify door style and depth of cabinet. Kit includes Concealed Drawer Box, Glides and mounting instructions, \$308 List price installed.

UNDER SINK PULL OUT



Vanities: The Under Sink Pull Out (USPO) is designed to fit around plumbing. Measuring area is critical for proper fit. Mounted to floor of vanity. Available in butt door vanity sink widths of 24", 27", 30", 33" or 36" in 21" or 18" depths. The width of the USPO boxes will be cabinet width minus 7", and the depth of the USPO boxes will be cabinet depth minus 3". All USPO boxes are 3.375" high.

Specify "USPO24, USPO27, USPO30, USPO33 or USPO36" in Special Comments. For pricing add \$388 list to cabinet price.

Kits available, includes USPO Box, Glides and mounting instructions, \$388 List.

HAIR APPLIANCE ORGANIZER



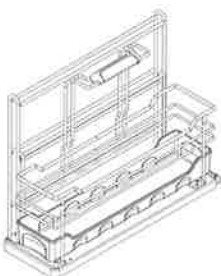
Vanities: Hair Appliance Organizers (HAO Drawer Box) available in single or butt vanity base (VB) widths 15", 18" or 24" in depths of 18" or 21". Available in butt door vanity sink widths of 33" or 36" in 21" or 18" depths. Mounted to floor of vanity. Specify Location Right (R) Left (L) or Centered (C). See Specs below.

Specify "HAO DWR Box 18 or 21 Deep" in Special Comments. For pricing add \$377 list to cabinet price.

Kits available, specify depth of cabinet, includes HAO Box, Glides and mounting instructions, \$377 List.

Installation space required: 18" Deep: 9 1/2" W. X 16 1/2 D. X 7 3/8" H
21" Deep: 9 1/2" W. X 18 1/4 D. X 7 3/8" H

UNDER SINK CADDY



The Undersink Caddy is a removable accessory that is available in single or butt vanity base widths 15", 18" or 24" in depths of 21", also available in butt door vanity sink widths of 33" or 36" in 21" depth. Accessory pullout mounted to floor of cabinet. Specify Location Right (R) Left (L) or Centered (C).

Specify "Under Sink Caddy" in Special Comments. For pricing add \$561 list to cabinet price.

Kits available, includes Under Sink Caddy, Glides and mounting instructions, \$561 List.

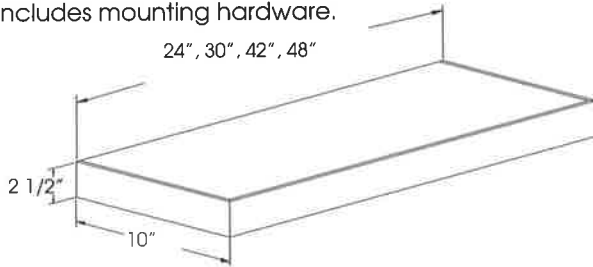
Overall dimensions: 11" W. X 18.375 D. X 16.5" H

bertch classic Cabinet Enhancements



FLOATING SHELVES DESIGN NOTE: Mounting hardware must be attached to wall studs.

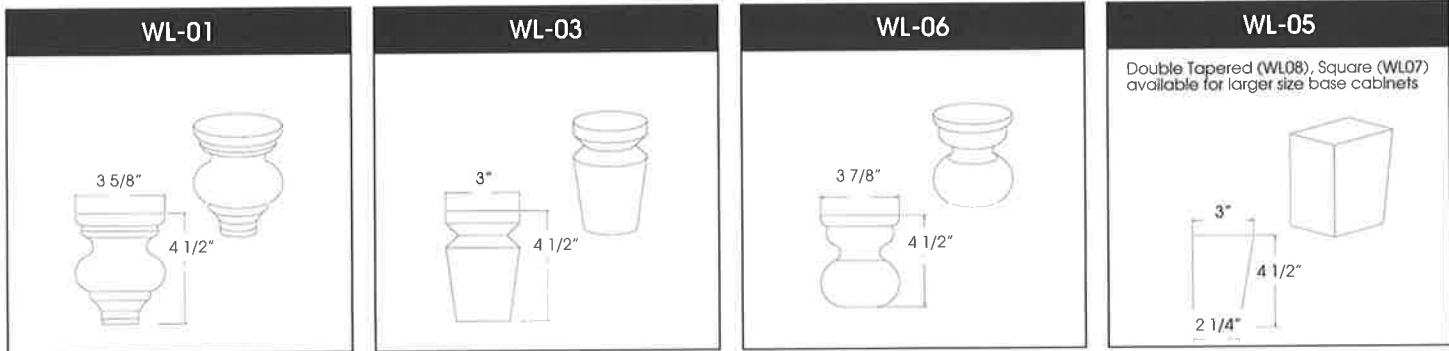
2 1/2" Thick
24", 30", 36", 42", and 48" Wide
Includes mounting hardware.



	ALDER, BIRCH, HICKORY, OAK, RUSTIC ALDER		CHERRY	
	STAIN	GLAZE	STAIN	GLAZE
FS2410	329	372	385	435
FS3010	340	384	398	450
FS3610	354	400	414	468
FS4210	365	412	427	483
FS4810	388	438	454	513

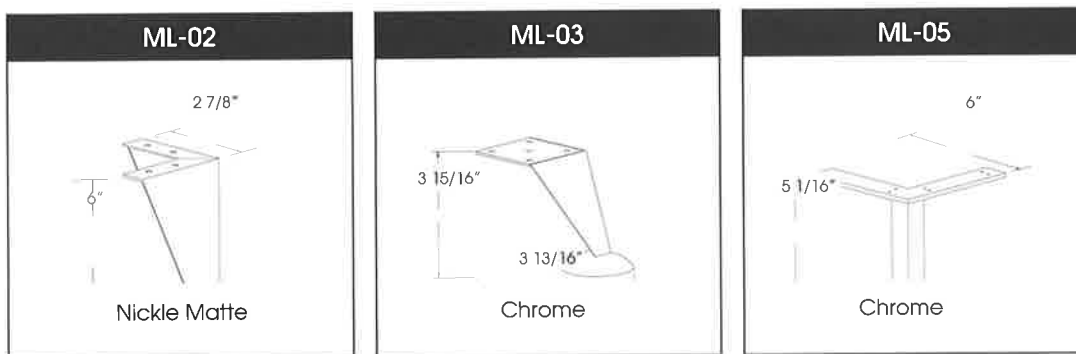
LEG OPTIONS

All vanity styles available with solid wood or metal legs instead of subtoe.
Specify "Wood Leg(WL)" or "Metal Leg(ML)" style in Special Comments. For pricing see styles below.



Wood Leg Option: Specify "Wood Leg(WL)" style in Special Comments.
For pricing add \$175 list to cabinet price.

Single Leg: Alder, Birch, Hickory, Oak, Rustic Alder (Stain) \$103 (Glazed) \$114 Cherry (Stain) \$118 (Glazed) \$130
Split Leg in pairs (WL05S): Alder, Birch, Hickory, Oak, Rustic Alder (Stain) \$188 (Glazed) \$211
 Cherry (Stain) \$217 (Glazed) \$246



Metal Leg Option: Metal legs are available on cabinets up to 36" width. Metal Legs are shipped loose.
Specify Metal Leg(ML) in Special Comment section on order form. For pricing add \$175 list to cabinet price.
Individual leg \$39 each list.

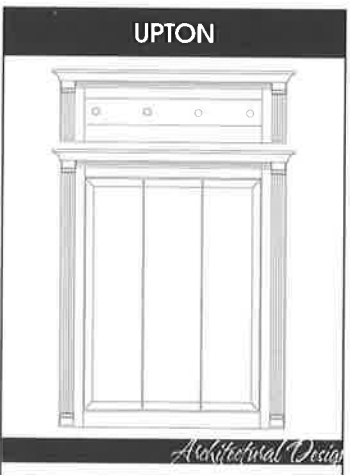
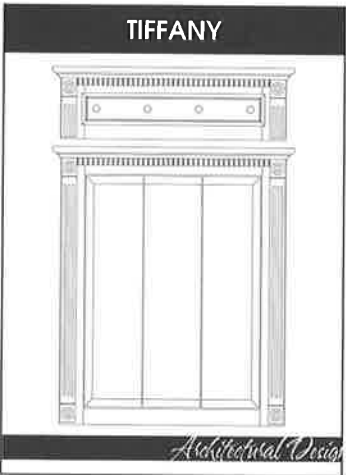
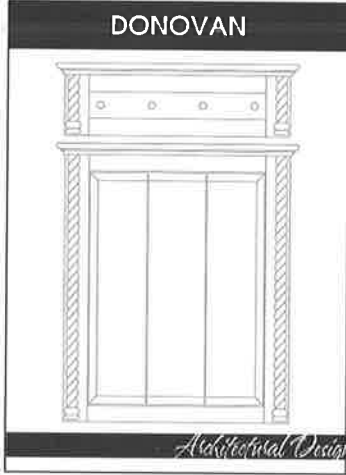
Standard height for 31"H base cabinets with metal legs is determined by height of the metal leg:
ML-02 is 32 1/2", ML-03 is 30 7/16", and ML-05 is 31 9/16".

bertch classic tri-view/light style



Architectural Design

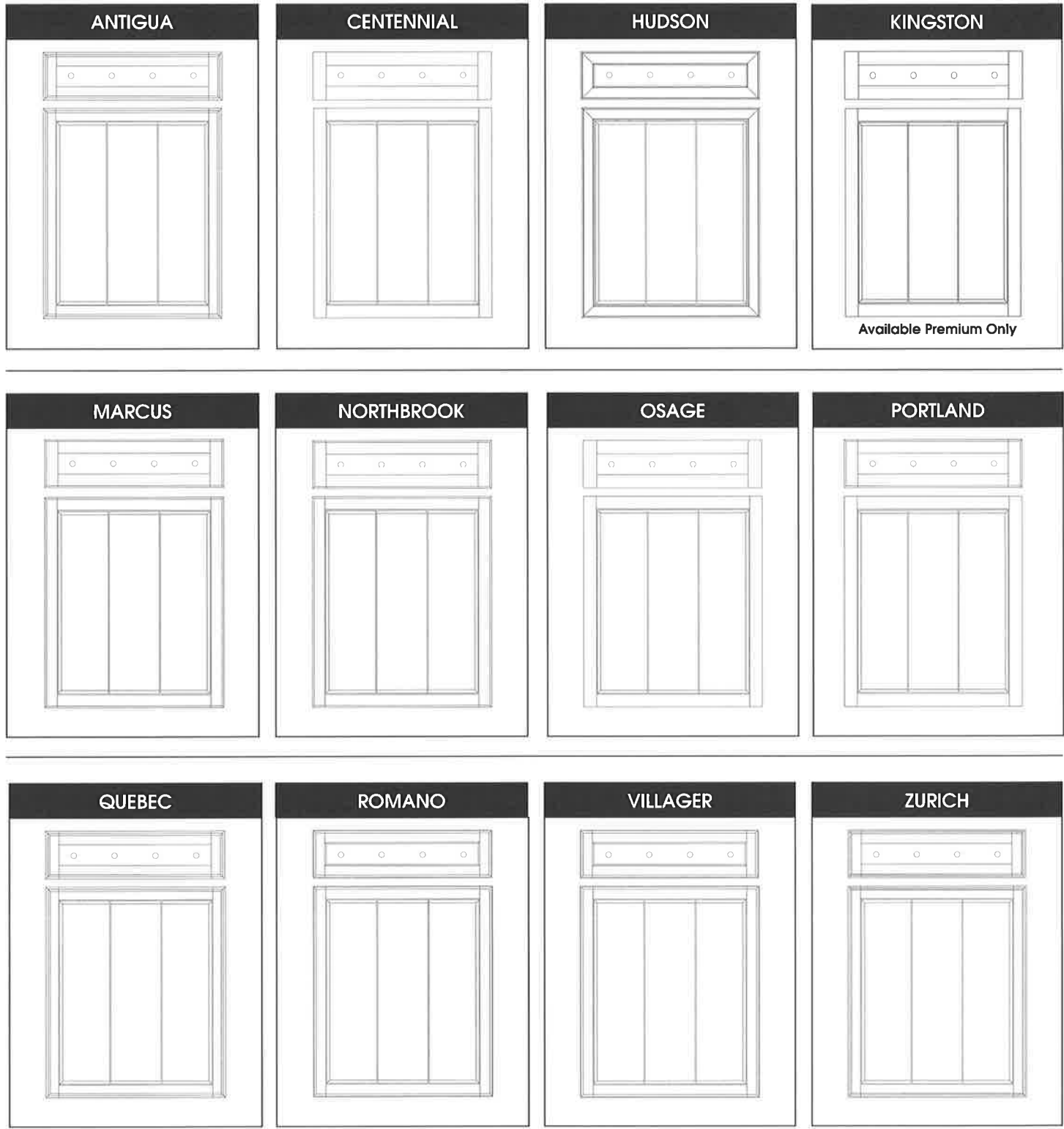
This style includes overlays, mouldings and rosettes or plinth blocks. Integral Crown Top adds 1 1/2" to Height and 2" to Width of Lights & Triviews. Rustic Alder is not recommended in Architectural Design Styles.



bertch classic tri-view/light style



Profile Specific Tri-View & Light Styles as well as the Freestyle have optional Crown Tops sold separately.



bertch classic vanities



Standard height is 31",
34 1/2" available specify (D).

Standard depth is 21",



18" depth available specify (18).

*16" Depth only

Single doors "Hinge Right" (HR) is standard, "Hinge

Left" available, specify (HL).

WOOD SPECIES	ALDER, BIRCH, HICKORY, OAK, RUSTIC ALDER				CHERRY			
	STANDARD	PREMIUM	STANDARD	PREMIUM	STANDARD	PREMIUM	STANDARD	PREMIUM
SPECIFICATIONS	STAIN	STAIN	GLAZE	GLAZE	STAIN	STAIN	GLAZE	GLAZE



VANITY SINK		SKU									
	Single Door 16" Depth Only *VS1816HR *VS1816HRT	VS1816HR	1	442	477	538	573	501	537	597	633
			2	468	504	564	600	528	563	624	659
			3	497	532	593	628	556	592	652	687
			4	565	601	661	697	625	660	721	756
			5	718	754	814	850	778	813	874	909
		VS1816HRT	1	467	502	563	598	526	562	622	658
			2	497	532	593	628	556	592	652	687
			3	540	576	636	671	600	635	695	731
			4	609	644	705	740	668	703	764	799
			5	761	796	857	892	820	855	916	951
	Butt Doors VS24 VS24T VS27 VS27T VS30 VS30T VS33 VS33T VS36 VS36T	VS24	1	529	564	673	708	618	653	762	797
			2	557	593	701	737	646	682	790	826
			3	586	621	730	765	675	710	819	854
			4	690	725	834	869	779	814	923	958
			5	842	877	986	1021	931	966	1075	1110
		VS24T	1	572	607	716	751	661	697	805	841
			2	601	636	745	780	690	725	834	869
			3	630	665	774	810	719	755	863	899
			4	733	769	877	912	822	858	966	1002
			5	885	920	1029	1064	974	1010	1118	1153
		VS27	1	572	608	716	751	661	697	805	841
			2	600	635	743	779	689	724	833	868
			3	632	667	775	811	721	756	864	900
			4	734	770	878	914	823	859	967	1003
			5	882	917	1026	1061	971	1006	1115	1150
		VS27T	1	613	649	757	793	702	738	846	882
			2	641	676	785	820	730	765	874	909
			3	678	714	822	858	767	803	911	947
			4	782	818	926	962	871	907	1015	1051
			5	931	966	1075	1110	1020	1055	1164	1199
		VS30	1	614	650	758	794	703	739	847	883
			2	643	678	787	822	732	767	876	911
			3	676	711	820	855	765	801	909	944
			4	780	815	924	959	869	904	1013	1048
			5	922	957	1065	1101	1011	1046	1155	1190
		VS30T	1	653	688	797	833	742	778	886	922
			2	682	717	826	861	771	806	915	950
			3	729	764	872	908	818	853	962	997
			4	833	868	976	1012	922	957	1065	1101
			5	975	1011	1119	1155	1064	1100	1208	1244
		VS33	1	661	697	805	841	750	786	894	930
			2	699	734	843	878	788	823	932	967
			3	751	787	895	931	841	876	984	1020
			4	855	891	999	1035	944	980	1088	1124
			5	989	1024	1133	1168	1078	1113	1222	1257
		VS33T	1	716	751	860	895	805	841	949	984
			2	754	789	898	933	843	878	987	1022
			3	813	849	957	992	902	938	1046	1081
			4	917	952	1061	1096	1006	1042	1150	1185
			5	1051	1086	1195	1230	1140	1175	1284	1319
VS36	1	708	743	852	887	797	833	941	976		
	2	756	791	900	935	845	880	989	1024		
	3	828	863	972	1007	917	952	1061	1096		
	4	932	967	1076	1111	1021	1056	1165	1200		
	5	1054	1089	1198	1233	1143	1179	1287	1322		
VS36T	1	780	815	924	959	869	904	1013	1048		
	2	828	863	972	1007	917	952	1061	1096		
	3	900	935	1044	1079	989	1024	1133	1168		
	4	1002	1037	1145	1181	1091	1126	1235	1270		
	5	1127	1163	1271	1306	1216	1252	1360	1396		

bertch classic vanities



Standard height is 31",
34 1/2" available specify (T).
Standard depth is 21",
18" depth available specify (18).
Single doors "Hinge Right" (HR) is standard,
"Hinge Left" available, specify (HL).

WOOD SPECIES	ALDER, BIRCH, HICKORY, OAK, RUSTIC ALDER				CHERRY			
	STANDARD	PREMIUM	STANDARD	PREMIUM	STANDARD	PREMIUM	STANDARD	PREMIUM

VANITY BASE/ VANITY REVERSE		SKU	STAIN	STAIN	GLAZE	GLAZE	STAIN	STAIN	GLAZE	GLAZE	
	Functional Top Drawer	VB15HR	1	561	632	657	727	620	691	716	787
		2	606	677	702	773	666	737	762	833	
		3	670	741	766	837	730	801	826	896	
		4	738	809	834	904	797	868	893	964	
		5	870	941	966	1037	930	1000	1026	1096	
	Single Door VB15HR VB15HRT	VB15HRT	1	624	694	719	790	683	754	779	850
		2	670	741	766	837	730	801	826	896	
		3	734	805	830	901	794	864	890	960	
		4	803	874	899	970	862	933	958	1029	
		5	934	1005	1030	1101	994	1064	1089	1160	
	VB18HR VB18HRT	VB18HR	1	596	667	692	763	656	726	751	822
		2	643	714	739	810	702	773	798	869	
		3	711	782	807	878	771	842	867	938	
		4	780	851	876	947	839	910	935	1006	
		5	907	978	1003	1073	966	1037	1062	1133	
	VB18HRT	1	666	737	762	833	725	796	821	892	
		2	711	782	807	878	771	842	867	938	
		3	781	852	877	948	841	911	936	1007	
		4	849	919	944	1015	908	979	1004	1075	
		5	975	1046	1071	1142	1035	1105	1131	1201	
	Butt Doors Functional Drawer VB24 VB24T	VB24	1	618	689	762	833	707	778	851	922
		2	666	737	810	880	755	826	899	970	
		3	723	794	867	938	812	883	956	1027	
		4	827	898	971	1042	916	987	1060	1131	
		5	963	1034	1107	1177	1052	1123	1196	1266	
	VB24T	1	677	748	821	892	766	837	910	981	
		2	723	794	867	938	812	883	956	1027	
		3	782	853	926	997	871	942	1015	1086	
		4	885	956	1029	1100	974	1045	1118	1189	
		5	1022	1093	1166	1237	1111	1182	1255	1326	
	VR24	1	618	689	762	833	707	778	851	922	
		2	666	737	810	880	755	826	899	970	
		3	723	794	867	938	812	883	956	1027	
		4	827	898	971	1042	916	987	1060	1131	
		5	963	1034	1107	1177	1052	1123	1196	1266	
	VR24T	1	677	748	821	892	766	837	910	981	
		2	723	794	867	938	812	883	956	1027	
		3	782	853	926	997	871	942	1015	1086	
		4	885	956	1029	1100	974	1045	1118	1189	
		5	1022	1093	1166	1237	1111	1182	1255	1326	
VR30	1	716	787	860	931	805	876	949	1020		
	2	762	833	906	976	851	922	995	1066		
	3	835	906	979	1049	924	995	1068	1139		
	4	939	1010	1083	1153	1028	1099	1172	1242		
	5	1061	1132	1205	1276	1150	1221	1294	1365		
VR30T	1	789	860	933	1004	878	949	1022	1093		
	2	835	906	979	1049	924	995	1068	1139		
	3	908	979	1052	1123	997	1068	1141	1212		
	4	1012	1083	1156	1227	1101	1172	1245	1316		
	5	1134	1205	1278	1349	1223	1294	1367	1438		
VR36	1	813	884	957	1028	902	973	1046	1117		
	2	861	932	1005	1076	950	1021	1094	1165		
	3	947	1018	1091	1161	1036	1107	1180	1250		
	4	1051	1121	1195	1265	1140	1211	1284	1354		
	5	1159	1230	1303	1374	1248	1319	1392	1463		
VR36T	1	901	972	1045	1116	990	1061	1134	1205		
	2	947	1018	1091	1161	1036	1107	1180	1250		
	3	1035	1105	1179	1249	1124	1195	1268	1338		
	4	1139	1209	1282	1353	1228	1298	1372	1442		
	5	1246	1317	1390	1461	1335	1406	1479	1550		

bertch classic vanities



Standard height is 31",
34 1/2" available specify (D).
Standard depth is 21",
18" depth available specify (18).
Drawers Right (VTR) is standard
Drawers Left is available, specify (VTL).

WOOD SPECIES	ALDER, BIRCH, HICKORY, OAK, RUSTIC ALDER				CHERRY			
	STANDARD	PREMIUM	STANDARD	PREMIUM	STANDARD	PREMIUM	STANDARD	PREMIUM

SPECIFICATIONS	STAIN	STAIN	GLAZE	GLAZE	STAIN	STAIN	GLAZE	GLAZE
----------------	-------	-------	-------	-------	-------	-------	-------	-------

FINISH	STAIN	STAIN	GLAZE	GLAZE	STAIN	STAIN	GLAZE	GLAZE
--------	-------	-------	-------	-------	-------	-------	-------	-------

VANITY 2 DRAWERS SPECIFY DRAWERS LEFT (VTL)



Single Door
VTR24
VTR24T
VTR27
VTR27T
VTR30
VTR30T
VTR33
VTR33T

SKU									
VTR24	1	581	687	773	879	700	806	892	998
VTR24	2	675	781	867	973	794	900	986	1092
VTR24T	3	733	839	925	1031	852	958	1044	1150
VTR24T	4	869	975	1061	1167	988	1094	1180	1286
VTR24T	5	1006	1112	1198	1304	1125	1231	1317	1423
VTR27	1	641	747	833	939	759	866	951	1057
VTR27T	2	733	839	925	1031	852	958	1044	1150
VTR27T	3	791	897	983	1089	910	1016	1102	1208
VTR27T	4	926	1032	1118	1224	1045	1151	1237	1343
VTR27T	5	1064	1171	1256	1362	1183	1289	1375	1481
VTR27	1	632	738	823	930	750	857	942	1048
VTR27	2	723	829	915	1021	842	948	1034	1140
VTR27	3	789	895	981	1087	908	1014	1100	1206
VTR27	4	924	1030	1116	1222	1043	1149	1235	1341
VTR27	5	1054	1160	1246	1352	1173	1279	1365	1471
VTR27T	1	697	803	888	995	815	922	1007	1113
VTR27T	2	789	895	981	1087	908	1014	1100	1206
VTR27T	3	855	962	1047	1153	974	1080	1166	1272
VTR27T	4	990	1096	1182	1288	1109	1215	1301	1407
VTR27T	5	1120	1227	1312	1418	1239	1345	1431	1537
VTR30	1	681	787	872	979	799	906	991	1097
VTR30	2	772	878	964	1070	891	997	1083	1189
VTR30	3	844	950	1036	1142	963	1069	1155	1261
VTR30	4	981	1087	1173	1279	1100	1206	1292	1398
VTR30	5	1103	1209	1295	1401	1222	1328	1414	1520
VTR30T	1	753	859	944	1051	871	978	1063	1169
VTR30T	2	844	950	1036	1142	963	1069	1155	1261
VTR30T	3	917	1023	1109	1215	1036	1142	1228	1334
VTR30T	4	1053	1159	1245	1351	1172	1278	1364	1470
VTR30T	5	1176	1282	1368	1474	1295	1401	1487	1593
VTR33	1	777	883	968	1075	895	1002	1087	1193
VTR33	2	870	976	1062	1168	989	1095	1181	1287
VTR33	3	949	1055	1141	1247	1068	1174	1260	1366
VTR33	4	1103	1209	1295	1401	1222	1328	1414	1520
VTR33	5	1219	1325	1410	1517	1337	1443	1529	1635
VTR33T	1	858	964	1049	1156	976	1083	1168	1274
VTR33T	2	949	1055	1141	1247	1068	1174	1260	1366
VTR33T	3	1030	1136	1222	1328	1149	1255	1341	1447
VTR33T	4	1182	1288	1374	1480	1301	1407	1493	1599
VTR33T	5	1298	1405	1490	1597	1417	1523	1609	1715



Butt Doors
VTR36
VTR36T
VTR39
VTR39T
VTR42
VTR42T

VTR36	1	876	982	1116	1222	1024	1131	1264	1370
VTR36	2	968	1075	1208	1314	1117	1223	1357	1463
VTR36	3	1054	1160	1294	1400	1203	1309	1442	1549
VTR36	4	1224	1330	1464	1570	1373	1479	1613	1719
VTR36	5	1333	1439	1573	1679	1481	1587	1721	1827
VTR36T	1	962	1068	1201	1308	1110	1216	1350	1456
VTR36T	2	1054	1160	1294	1400	1203	1309	1442	1549
VTR36T	3	1142	1248	1382	1488	1290	1397	1530	1636
VTR36T	4	1313	1420	1553	1659	1462	1568	1702	1808
VTR36T	5	1421	1527	1660	1767	1569	1675	1809	1915
VTR39	1	924	1030	1164	1270	1072	1179	1312	1418
VTR39	2	1015	1121	1255	1361	1164	1270	1404	1510
VTR39	3	1110	1216	1350	1456	1258	1365	1498	1605
VTR39	4	1281	1388	1521	1627	1430	1536	1670	1776
VTR39	5	1382	1488	1622	1728	1530	1636	1770	1876
VTR39T	1	1019	1125	1258	1365	1167	1273	1407	1513
VTR39T	2	1110	1216	1350	1456	1258	1365	1498	1605
VTR39T	3	1205	1311	1445	1551	1353	1459	1593	1699
VTR39T	4	1375	1481	1615	1721	1523	1630	1763	1869
VTR39T	5	1477	1583	1716	1823	1625	1731	1865	1971
VTR42	1	972	1078	1212	1318	1120	1227	1360	1466
VTR42	2	1064	1171	1304	1410	1213	1319	1453	1559
VTR42	3	1166	1272	1406	1512	1314	1421	1554	1660
VTR42	4	1336	1442	1576	1682	1485	1591	1724	1831
VTR42	5	1430	1536	1670	1776	1578	1684	1818	1924
VTR42T	1	1073	1180	1313	1420	1222	1328	1462	1568
VTR42T	2	1166	1272	1406	1512	1314	1421	1554	1660
VTR42T	3	1268	1374	1507	1614	1416	1522	1656	1762
VTR42T	4	1438	1544	1678	1784	1586	1692	1826	1932
VTR42T	5	1531	1638	1771	1877	1680	1786	1920	2026

bertch classic wall cabinets



Architectural Design Door Styles
 Include Integral Matching Crown top.
 (Reference Style Section)
 Crown Tops for other styles available.
 (Reference Below)
 Single door units Hinge Right (HR) standard
 "Hinge Left" available, specify (HL).

WOOD SPECIES	ALDER, BIRCH, HICKORY, OAK, RUSTIC ALDER				CHERRY			
	STANDARD	PREMIUM	STANDARD	PREMIUM	STANDARD	PREMIUM	STANDARD	PREMIUM
CABINET SPECIFICATIONS	STAIN	STAIN	GLAZE	GLAZE	STAIN	STAIN	GLAZE	GLAZE





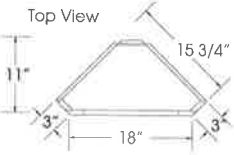

WALL CABINETS		SKU											
	Single Door 3 Adjustable Shelves Top and bottom unfinished Crown Options for non Architectural Styles See Below 6" Depth, 33" High WC1533HR	WC1533HR	1	371	407	419	455	401	436	449	484		
			2	389	425	437	473	419	455	467	502		
			3	408	443	456	491	437	473	485	521		
			4	441	476	489	524	471	506	518	554		
			5	458	493	506	541	488	523	536	571		
			W1830HR	1	397	433	445	481	427	463	475	510	
				2	417	452	465	500	447	482	494	530	
				3	436	472	484	520	466	501	514	549	
				4	472	507	520	555	501	537	549	585	
				5	490	525	538	573	520	555	568	603	
			9" Depth, 30" High W1830HR	1	453	489	549	585	513	548	609	644	
				2	475	510	571	606	534	570	630	666	
				3	497	532	593	628	556	592	652	687	
				4	538	573	634	669	597	633	693	729	
				5	558	594	654	690	618	653	714	749	
	Butt Doors 3 Adjustable Shelves Top and bottom unfinished Crown Options for non Architectural Styles See Below W2430 W3030 W3630	W3030	1	517	553	613	649	577	612	673	708		
			2	541	577	637	673	601	636	697	732		
			3	566	602	662	698	626	661	722	757		
			4	613	649	709	745	673	708	769	804		
			5	636	671	732	767	695	731	791	827		
			W3630	1	589	625	685	721	649	684	745	780	
				2	617	652	713	748	676	711	772	807	
				3	645	681	741	777	705	740	801	836	
				4	699	734	795	830	758	794	854	890	
				5	725	761	821	857	785	820	880	916	
			Single Door 6" Depth 1 Adj Shelf/1 Open Shelf WCC1830HR	WCC1830HR	1	465	500	513	548	494	530	542	578
					2	563	598	611	646	593	628	641	676
					3	633	668	681	716	662	698	710	746
					4	671	707	719	755	701	737	749	785
					5	753	788	801	836	782	818	830	866
	Butt Doors 9" Depth 1 Adj Shelf/1 Open Shelf WCC2430	WCC2430	1	630	665	726	762	690	725	786	821		
			2	685	720	781	817	745	780	841	876		
			3	727	762	823	859	787	822	883	918		
			4	787	822	883	918	846	882	942	978		
			5	828	863	924	959	887	923	983	1019		
	Single Door W/2 Drawers 12" Depth 2 Adjustable Shelves WC2D1848HR	WC2D1848HR	1	759	866	903	1010	849	955	992	1099		
			2	812	918	956	1062	901	1007	1045	1151		
			3	866	972	1010	1116	955	1061	1099	1205		
			4	934	1040	1078	1184	1023	1129	1167	1273		
			5	987	1093	1131	1237	1076	1182	1220	1326		

CROWN TOPS		SKU									
	Traditional (T)	Profile (B,C,S,or T) Crown Tops (CT)									
	Cove(C)	Specify Depth									
		WC15	85	85	96	96	99	99	110	110	
	Beveled(B)	WCC18	85	85	96	96	99	99	110	110	
		W18	85	85	96	96	99	99	110	110	
	Southwest(S)	WC2D18	85	85	96	96	99	99	110	110	
		W24/WCC24	85	85	96	96	99	99	110	110	
		W30	102	102	115	115	120	120	132	132	
	W36	102	102	115	115	120	120	132	132		

bertch classic medicine cabinets/tri-views



Architectural Design Door Styles
Include Integral Matching Crown top.
(Reference Style Section)
Crown Tops for other styles available.
(Reference Crown/Pediment Section)
Single door units Hinge Right (HR) standard
"Hinge Left" available, specify (HL).

CABINET SPECIFICATIONS	WOOD SPECIES	ALDER, BIRCH, HICKORY, OAK, RUSTIC ALDER				CHERRY				
		STANDARD	PREMIUM	STANDARD	PREMIUM	STANDARD	PREMIUM	STANDARD	PREMIUM	
FINISH		STAIN	STAIN	GLAZE	GLAZE	STAIN	STAIN	GLAZE	GLAZE	
MEDICINE CABINET OPEN SHELF 5" DEPTH		SKU								
	Single Door Open Shelf 3 Wood Shelves 6 Glass Open Shelves Pencil Edged Mirrors Touch latch MCO3036 MCO3636	MCO3036 MCO3636	465 517	465 517	512 569	512 569	531 590	531 590	577 641	577 641
	Tri-view Open Shelf 3 Wood Shelves 6 Glass Open Shelves Pencil Edged Mirrors Touch latch TVO4836	TVO4836	573	573	632	632	654	654	713	713
DIAGONAL CORNER MEDICINE CABINETS		SKU								
	Architectural Design Single Door With Light 2 Shelves 1" Beveled Mirror DCMCL1833HR	Architectural Design Styles Integral Crown Top adds 1 1/2" to Height. DCMCL1833HR	762	809	839	884	869	915	946	991
	Profile Specific Single Door With Light 2 Shelves 1" Beveled Mirror DCMCL1833HR	Profile style specific, to match vanity selection, crown available page 30. DCMCL1833HR	692	734	762	803	789	831	859	901
										
OVAL DOOR MEDICINE CABINETS 4 1/4" DEPTH		SKU								
	Oval Medicine Cabinet 2 Shelves 20" Wide X 30" High Cabinet Box Size: 14" W x 16" H 1" Bevel Mirror OMCHR	Profile style specific, to match vanity selection. OMCHR	746	746	820	820	851	851	924	924
	Framed Oval Mirror Only 1" Bevel Mirror OM	OM	426	426	468	468	486	486	528	528

bertch classic medicine cabinets/tri-views



Architectural Design Door Styles
 Include Integral Matching Crown top.
 (Reference Style Section)
Crown Tops for other styles available.
 (Reference Crown/Pediment Section)
Single door units Hinge Right (HR) standard
 "Hinge Left" available, specify (HL).

WOOD SPECIES	ALDER, BIRCH, HICKORY, OAK, RUSTIC ALDER				CHERRY			
	STANDARD	PREMIUM	STANDARD	PREMIUM	STANDARD	PREMIUM	STANDARD	PREMIUM
CABINET SPECIFICATIONS								
FINISH	STAIN	STAIN	GLAZE	GLAZE	STAIN	STAIN	GLAZE	GLAZE

SWING DOOR MEDICINE CABINETS 4 1/4" DEPTH SKU



Architectural Design
 2 Shelves
 (with mldgs, mirror 6"W)
 MC1827HR
 3 Shelves
 MC2433HR

Architectural Design Styles Integral Crown Top adds 1 1/2" to Height

MC1827HR	646	685	711	750	738	777	802	841
MC2433HR	844	895	931	981	964	1014	1047	1099



Profile Specific
 2 Shelves
 MC1627HR
 3 Shelves
 MC2233HR

Profile style specific, to match vanity selection, crown top available page 30.

MC1627HR	512	541	563	594	581	613	634	666
MC2233HR	709	751	781	823	809	852	879	922



Freestyle (Door Style "F")
 2 Shelves
 UMC1627HR
 3 Shelves
 UMC2233HR
 (Recessed available specify URMCL)

Freestyle (may be used with any vanity- universal profile) Crown top available page 24.

UMC1627HR	481	510	528	557	548	577	596	625
UMC2233HR	709	707	733	773	759	799	827	867

1" Beveled Inset Mirror with touchlatch.
 Recessed Cutout Size: 1 3/8"W X 1 1/2"H smaller than overall dimension.

SWING DOOR WITH LIGHTS 4 1/4" DEPTH SKU



Architectural Design
 2 Shelves
 MCL1833HR
 MCL2433HR

Architectural Design Styles Integral Crown Top adds 1 1/2" to Height.

MCL1833HR	797	844	877	924	909	956	989	1036
MCL2433HR	1053	1117	1158	1222	1201	1263	1306	1368



Profile Specific
 2 Shelves
 MCL1633HR
 MCL2233HR

Profile style specific, to match vanity selection, crown available page 30.

MCL1633HR	662	701	727	767	754	795	821	861
MCL2233HR	917	972	1010	1064	1046	1100	1139	1193



Freestyle (Door Style "F")
 2 Shelves
 UMCL1633HR
 UMCL2233HR
 (Recessed available specify URMCL)

Freestyle (may be used with any vanity- universal profile) Crown available page 30.

UMCL1633HR	624	659	684	722	709	748	771	809
UMCL2233HR	863	915	948	999	983	1035	1069	1121

1" Beveled Mirror Recessed Cutout
 Size: 1 3/8"W X 1 1/2"H smaller than overall dimension.

CROWN TOPS

SKU



Traditional (T)
 Cove (C)
 Beveled (B)
 Southwest (S)

Profile (B,C,S, or T)
 Crown Tops (CT)
Medicine Cabinets
(MC16)
(MC22)
(DCMCL18)
 (ie. BCTMC16)

75	75	85	85	88	88	98	98
82	82	91	91	96	96	106	106
82	82	91	91	96	96	106	106

bertch classic tri-views/framed mirrors



Architectural Design Door Styles include

Integral Matching Crown top.

(Reference Style Section)

Crown Tops available for Freestyle.

(Reference Crown/Pediment Section)

Freestyle Items are universal and may be

used with any style. These items are not

style specific.

WOOD SPECIES	ALDER, BIRCH, HICKORY, OAK, RUSTIC ALDER				CHERRY			
	STANDARD	PREMIUM	STANDARD	PREMIUM	STANDARD	PREMIUM	STANDARD	PREMIUM
CABINET SPECIFICATIONS								
FINISH	STAIN	STAIN	GLAZE	GLAZE	STAIN	STAIN	GLAZE	GLAZE

TRI-VIEWS 4 1/4" DEPTH

SKU	ALDER, BIRCH, HICKORY, OAK, RUSTIC ALDER	ALDER, BIRCH, HICKORY, OAK, RUSTIC ALDER	ALDER, BIRCH, HICKORY, OAK, RUSTIC ALDER	ALDER, BIRCH, HICKORY, OAK, RUSTIC ALDER	CHERRY	CHERRY	CHERRY	CHERRY
Architectural Design Styles Integral Crown Top adds 1 1/2" to Height.								
TV3033	908	962	998	1053	1035	1089	1126	1180
TV3633	964	1021	1060	1118	1099	1157	1196	1253
TV4833	1230	1304	1352	1426	1400	1474	1523	1598
TV6033	1537	1628	1690	1782	1751	1843	1905	1997
Profile style specific, to match vanity selection.								
TV2833	686	729	756	797	783	825	852	894
TV3433	729	772	802	846	831	874	903	948
TV4633	931	986	1023	1080	1060	1117	1155	1209
TV5833	1164	1233	1279	1350	1327	1397	1442	1512
Freestyle (may be used with any vanity- universal profile) Crown available separately.								
UTV2833	652	691	718	757	745	783	810	849
UTV3433	692	734	761	803	789	831	859	901
UTV4633	884	938	972	1024	1007	1060	1096	1149
UTV5833	1104	1172	1215	1282	1260	1327	1369	1437



Beveled Mirror

Architectural Styles
TV3033 3 Shelves
TV3633 9 Shelves
TV4833 9 Shelves
TV6033 9 Shelves

Profile Style Specific
TV2833 3 Shelves
TV3433 9 Shelves
TV4633 9 Shelves
TV5833 9 Shelves

Freestyle (Door Style "F")
UTV2833 3 Shelves
UTV3433 9 Shelves
UTV4633 9 Shelves
UTV5833 9 Shelves

Recessed Cutout Size:
1 3/8" W X 1 1/2" H smaller
than overall dimension.
(Recessed available specify URTV)



Beveled Mirror

Tri-view with Light
Architectural Styles
TVL3033 2 Shelves
TVL3633 6 Shelves
TVL4833 6 Shelves
TVL6033 6 Shelves

Profile Style Specific
TVL2833 2 Shelves
TVL3433 6 Shelves
TVL4633 6 Shelves
TVL5833 6 Shelves

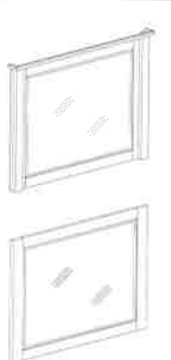
Freestyle (Door Style "F")
UTVL2833 2 Shelves
UTVL3433 6 Shelves
UTVL4633 6 Shelves
UTVL5833 6 Shelves

Recessed Cutout Size:
1 3/8" W X 1 1/2" H smaller
than overall dimension.
(Recessed available specify URTVL)

SKU	ALDER, BIRCH, HICKORY, OAK, RUSTIC ALDER	ALDER, BIRCH, HICKORY, OAK, RUSTIC ALDER	ALDER, BIRCH, HICKORY, OAK, RUSTIC ALDER	ALDER, BIRCH, HICKORY, OAK, RUSTIC ALDER	CHERRY	CHERRY	CHERRY	CHERRY
Architectural Design Styles Integral Crown Top adds 1 1/2" to Height.								
TVL3033	1167	1238	1285	1354	1330	1400	1448	1518
TVL3633	1274	1351	1400	1478	1451	1527	1579	1657
TVL4833	1627	1726	1790	1887	1855	1953	2018	2116
TVL6033	2036	2157	2239	2362	2321	2444	2525	2646
Profile style specific, to match vanity selection.								
TVL2833	947	1005	1043	1097	1080	1136	1174	1231
TVL3433	1039	1102	1142	1205	1184	1247	1289	1351
TVL4633	1328	1407	1462	1541	1514	1593	1647	1727
TVL5833	1663	1763	1828	1930	1896	1996	2064	2162
Freestyle (may be used with any vanity- universal profile) Crown available separately.								
UTVL2833	900	954	990	1044	1024	1080	1117	1169
UTVL3433	987	1046	1086	1144	1126	1184	1223	1284
UTVL4633	1261	1337	1389	1464	1438	1514	1563	1639
UTVL5833	1579	1674	1738	1833	1802	1896	1960	2053

FRAMED MIRRORS (Beveled)

SKU	ALDER, BIRCH, HICKORY, OAK, RUSTIC ALDER	ALDER, BIRCH, HICKORY, OAK, RUSTIC ALDER	ALDER, BIRCH, HICKORY, OAK, RUSTIC ALDER	ALDER, BIRCH, HICKORY, OAK, RUSTIC ALDER	CHERRY	CHERRY	CHERRY	CHERRY
Architectural Design Styles Integral Crown Top adds 1 1/2" to Height.								
FM2436	577	577	634	634	657	657	715	715
FM3036	598	598	657	657	682	682	742	742
FM3636	634	634	697	697	723	723	787	787
FM4836	707	707	779	779	805	805	876	876
FM6036	884	884	972	972	1008	1008	1096	1096
Profile style specific, to match vanity selection.								
FM2230	242	242	266	266	276	276	301	301
FM2830	369	369	405	405	420	420	457	457
FM3430	411	411	451	451	467	467	510	510
FM4630	505	505	556	556	577	577	628	628
FM5830	617	617	678	678	705	705	765	765
Freestyle (may be used with any vanity- universal profile) Crown available separately.								
UFM2236	266	266	295	295	305	305	331	331
UFM2836	405	405	445	445	461	461	502	502
UFM3436	451	451	497	497	516	516	561	561
UFM4636	556	556	611	611	634	634	690	690
UFM5836	678	678	748	748	773	773	842	842



Architectural Styles
FM2436
FM3036
FM3636
FM4836
FM6036

Profile Style Specific
FM2230
FM2830
FM3430
FM4630
FM5830

Freestyle (Door Style "F")
3 13/16" Wide Frame
UFM2236
UFM2836
UFM3436
UFM4636
UFM5836



Crosshead Framed
CHM2443
CHM3043
CHM3643
CHM4843

SKU	ALDER, BIRCH, HICKORY, OAK, RUSTIC ALDER	ALDER, BIRCH, HICKORY, OAK, RUSTIC ALDER	ALDER, BIRCH, HICKORY, OAK, RUSTIC ALDER	ALDER, BIRCH, HICKORY, OAK, RUSTIC ALDER	CHERRY	CHERRY	CHERRY	CHERRY
Architectural Design Styles Only								
CHM2443	952	952	1047	1047	1086	1086	1181	1181
CHM3043	986	986	1086	1086	1125	1125	1222	1222
CHM3643	1045	1045	1149	1149	1192	1192	1295	1295
CHM4843	1167	1167	1285	1285	1330	1330	1448	1448

bertch linea cabinet specifications



LINEA (premium/standard)



Cabinets are frameless construction, utilizing doweled and glued joints. Sides are 3/4", medium density PBC with a complimentary grain and color low pressure laminate (LPL) on the interior and exterior. Backs are 1/4" plywood, with LPL on the interior face. Shelves are 3/4" PBC with LPL on the top and bottom surfaces, with PVC edge-banding on the front edge.



HINGES: used for "Premium" cabinetry include an up-graded "soft motion" closing feature. Medicine cabinets utilize a "clip" type, but are free-swinging, and incorporate a touch latch feature.



HINGES: for "Standard" cabinetry are a "clip" type, which snap onto a mounting plate and are self-closing. This hinge features 3-way adjustability.

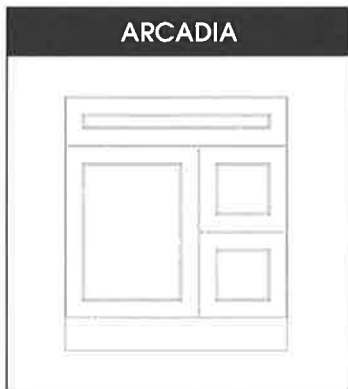


DRAWER SYSTEM: utilizes an upgraded full extension drawer system. Sides are painted steel, with 5/8" LPL back and bottom. The box is mounted on precision, ball bearing glides, with a softmotion closing feature.



DRAWER SYSTEM: consists of a drawer box constructed of 1/2" thick PBC sides, front and back with white LPL inside and out. The bottom is 1/8" PBC with LPL on the face. Drawer system is a 3/4 extension side mount, epoxy coated steel on nylon rollers.

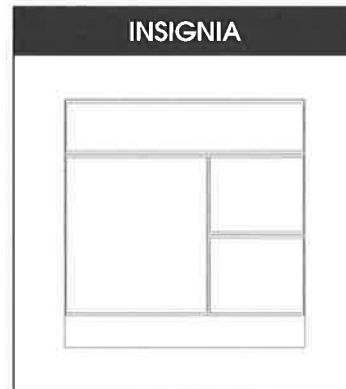
DECORATIVE HARDWARE: is included n/c. See hardware page for options.



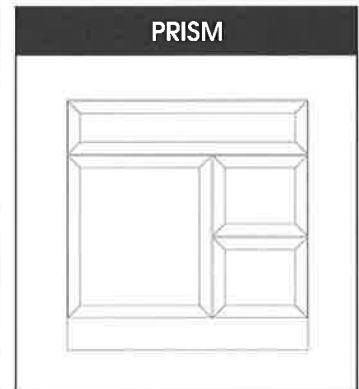
ARCADIA



DRESDEN



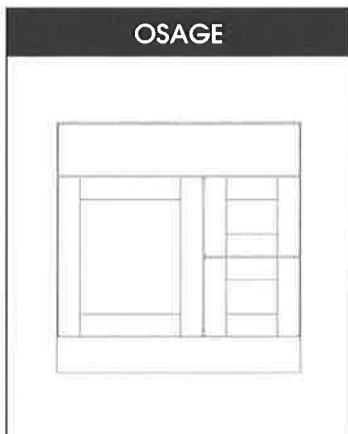
INSIGNIA



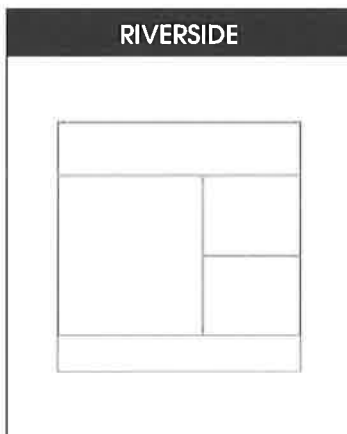
PRISM

Colors: Cordovan Cherry(CC), Dark Chocolate(DC), Hard Rock Maple(HRM), Light Mahogany(LM), Linen(L), Macassar(MA), Queensland Oak(Q), Wenge(WE), White (W), White Ash(WA)

Accent Front Color (AFC) Option: Any cabinet box is available in Color foil listed above with the additional option of having the doors and drawer fronts only in Carribbean White(CW), High Gloss Steel(HGS), Light Blue Metallic(LBM), or Light Green Metallic(LGM). The exterior of the cabinet will match the "Color" foil specified.



OSAGE



RIVERSIDE

Linea Wood Door Options:

Door Styles: Osage(OX), Riverside(RSX)
Wood Doors only available with premium construction.

Wood Species: Select Alder(SA), Birch(B), Cherry(C), Hickory(H), Oak(O)

Stains: Autumn(A), Black(BL)Matte Only, Brindle(B), Champagne(C), Dawn(D), Driftwood (DW), Eggshell(ES), Fawn(F), Graphite(GR), Harvest(H), Lighthouse(LH), Loft(LO), Mocha(M), Morel(MO), Natural(N), Rose(R), Sable(S), Sage(SG), Shale(SH), Toffee(T), White(W)

Glazes: Espresso(E), Ginger(G), Ivory(I), Java(J), Pistachio(P), Vanilla(V)

Finish Sheen: Semi-Gloss, Matte available at no charge, specify in the sheen column on order form.

Model number: Reference Sku from spec

bertch linea vanities



Standard height with toe kick is 31", 34 1/2" available specify(T).
On base units Drawers Right (DR) is standard, Drawers Left is available, specify (DL).
Wood Doors available In Premium Spec Only

Metal legs are available on cabinets up to 36" width.
Specify leg option in Special Comment section on the order form.
Standard height for base cabinets with metal legs is determined by height of leg:
ML-02 is 32 1/2", ML-03 is 30 7/16", and ML-05 is 31 9/16". Shipped Loose.
For pricing add \$134.00 list to cabinet price.

WOOD SPECIES	LAMINATE		ALDER, BIRCH, HICKORY, OAK		CHERRY	
	STANDARD	PREMIUM	PREMIUM	PREMIUM	PREMIUM	PREMIUM
LINEA SPECIFICATIONS						
COLOR or FINISH	FOIL	FOIL	STAIN	GLAZE	STAIN	GLAZE

VANITY SINK BASE



Single Door
Specify hinge left (HL)
XVS1816HR
XVS1816HRT

XVS1816HR	483	494	520	616	579	675
XVS1816HRT	526	539	566	662	626	722



Butt Doors
Available 18" or 21" Deep
XVS24
XVS24T
XVS27
XVS27T
XVS30
XVS30T
XVS33
XVS33T
XVS36
XVS36T

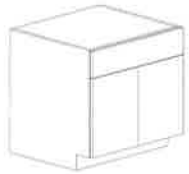
XVS24	556	578	606	750	695	839
XVS24T	606	630	662	806	751	895
XVS27	595	619	650	804	732	863
XVS27T	660	687	721	892		
812	958					
XVS30	629	651	684	828		
773	917					
XVS30T	685	708	743	887		
833	976					
XVS33	690	718	753	932		

VANITY BASE WITH DRAWER AVAILABLE 18" OR 21" DEEP



Single Door
Specify hinge left (HL)
XVB12HR
XVB12HRT
XVB15HR
XVB15HRT
XVB18HR
XVB18HRT

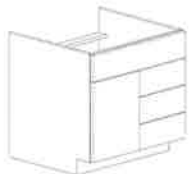
XVS36	754	777	815	959	904	1048
XVS36T	821	847	890	1034	979	1123
XVB12HR	595	711	747	843	806	902
XVB12HRT	649	775	814	910	874	970
XVB15HR	625	741	778	874	837	933
XVB15HRT	682	809	849	944	908	1004
XVB18HR	653	769	807	903	867	963
XVB18HRT	713	838	880	976	940	1036



Butt Doors
XVB24
XVB24T

XVB24	733	861	904	1048	994	1137
XVB24T	798	939	986	1129	1075	1219

VANITY WITH THREE DRAWERS AVAILABLE 18" OR 21" DEEP



Single Door
XV24DR
XV24DRT
XV30DR
XV30DRT

XV24DR	764	1089	1144	1384	1293	1533
XV24DRT	833	1188	1247	1487	1396	1635
XV30DR	911	1238	1300	1539	1448	1688
XV30DRT	986	1340	1407	1647	1555	1795



Butt Doors
XV36DR
XV36DRT
XV42DR
XV42DRT

XV36DR	1068	1405	1475	1763	1654	1941
XV36DRT	1164	1531	1608	1896	1786	2074
XV42DR	1142	1479	1542	1831	1721	2008

VANITY WITH SIX DRAWERS AVAILABLE 18" OR 21" DEEP



Butt Doors
XV48D
XV48DT

XV48D	1474	2125	2231	2663	2499	2930
XV48DT	1608	2316	2431	2863	2699	3130