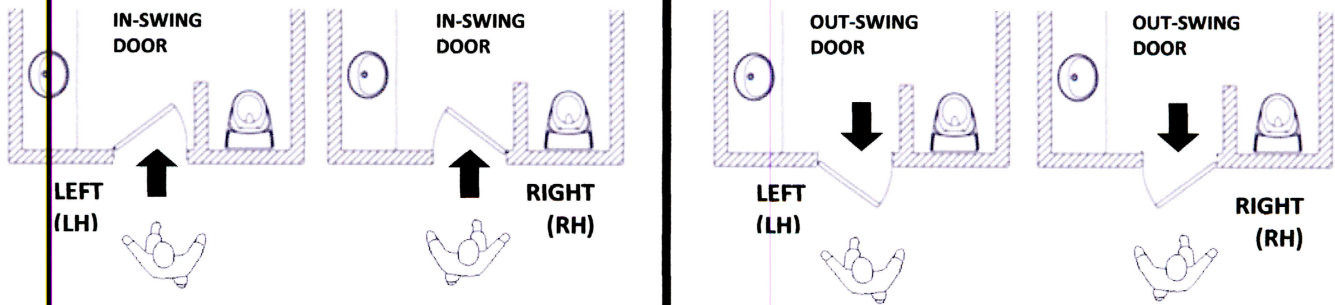


HOW TO BUILD AN EMTEK PRODUCT PART NUMBER



HANDING



HANDING OF DOOR IS DETERMINED FROM THE OUTSIDE LOOKING IN

CRITICAL ORDER INFORMATION <i>(For most Products)</i>					
PRODUCT CODE	BACKSET	KNOB/LEVER STYLE	HANDING	FINISH	DOOR THICKNESS

TO BUILD AN EMTEK PART NUMBER using the Price Book, follow the steps below from left to right for each product type. **FOR EASE OF ORDERING** use the Order Form provided by Emtek in the Price Book.

EXAMPLES:

Keypad Entry Set EMTouch Single Cylinder, 2-3/4" Backset, Turino Lever, Oil Rubbed Bronze Finish	Brass Tubular Entrance Handle Set Single Cylinder, 2-3/4" Backset, Basel Lever, Left Handed, Oil Rubbed Bronze Finish.
E4827 234 T LH US10B , 2-1/4" Thick Door (1) (2) (3) (4) (5) Comments	4817 234 BA LH US10B , 2-14" Thick Door (1) (2) (3) (4) (5) Comments

ENTRY SET - CONTEMPORARY COLOR COLLECTION

1	2	3	4	5	ADD TO COMMENTS
PRODUCT CODE	BACKSET	LEVER STYLE	HANDING	COLOR INSERT	DOOR THICKNESS

DEAD BOLTS - CONTEMPORARY COLOR COLLECTION

1	2	3	4	ADD TO COMMENTS
PRODUCT CODE	BACKSET	FINISH	COLOR INSERT	DOOR THICKNESS

KEYPAD ENTRY SETS

1	2	3	4	5	ADD TO COMMENTS
PRODUCT CODE	BACKSET	KNOB OR LEVER STYLE	HANDING	FINISH	DOOR THICKNESS

KEYPAD DEAD BOLTS

1	2	3	ADD TO COMMENTS
PRODUCT CODE	BACKSET	FINISH	DOOR THICKNESS

KEYPAD LEVER SETS

1	2	3	4	5	ADD TO COMMENTS
PRODUCT CODE	BACKSET	KNOB OR LEVER STYLE	HANDING	FINISH	DOOR THICKNESS

MORTISE - ENTRANCE HANDLE SETS

1	2	3	4	5	6	ADD TO COMMENTS
FUNCTION	PRODUCT CODE	BACKSET	KNOB OR LEVER STYLE	HANDING	FINISH	<ul style="list-style-type: none"> DOOR THICKNESS SPECIFY IF OUT-SWING

HOW TO BUILD AN EMTEK PRODUCT PART NUMBER



MORTISE – KNOB BY KNOB / LEVER BY LEVER

1	2	3	4	5	6	ADD TO COMMENTS
FUNCTION	PRODUCT CODE	BACKSET	KNOB OR LEVER STYLE	HANDING	FINISH	<ul style="list-style-type: none"> • DOOR THICKNESS • SPECIFY IF OUT-SWING

BRASS TUBULAR - ENTRANCE HANDLE SETS

1	2	3	4	5	ADD TO COMMENTS
PRODUCT CODE	BACKSET	KNOB OR LEVER STYLE	HANDING	FINISH	<ul style="list-style-type: none"> • DOOR THICKNESS • INTERCONNECT DEVICE

GRIP BY GRIP - ENTRANCE HANDLE SETS

1	2	3	ADD TO COMMENTS
PRODUCT CODE	BACKSET	FINISH	• DOOR THICKNESS

KEY IN KNOB / KEY IN LEVER - ENTRANCE LOCK SETS

1	2	3	4	5	ADD TO COMMENTS
PRODUCT CODE	BACKSET	KNOB OR LEVER STYLE	HANDING	FINISH	• DOOR THICKNESS

SINGLE & TWO-POINT LOCKSETS

1	2	3	4	5	ADD TO COMMENTS
PRODUCT CODE	BACKSET	KNOB OR LEVER STYLE	HANDING	FINISH	• DOOR THICKNESS

DEADBOLTS

1	2	3	ADD TO COMMENTS
PRODUCT CODE	BACKSET	FINISH	• DOOR THICKNESS

SIDEPLATE LOCK SETS

1	2	3	4	5	ADD TO COMMENTS
PRODUCT CODE	BACKSET	KNOB OR LEVER STYLE	HANDING	FINISH	<ul style="list-style-type: none"> • DOOR THICKNESS • INTERCONNECT DEVICE

PASSAGE & PRIVACY SETS

1	2	3	4	5	6	ADD TO COMMENTS
CONCEALED FASTENER	PRODUCT CODE	BACKSET	KNOB OR LEVER STYLE	HANDING	FINISH	• DOOR THICKNESS

DOOR ACCESSORIES

1	2
PRODUCT CODE	FINISH

HINGES & HINGE ACCESSORIES

1	2
PRODUCT CODE	FINISH

SCREEN DOOR LOCKS

1	2	3
PRODUCT CODE	HANDING	FINISH

CABINET HARDWARE

1	2
PRODUCT CODE	FINISH

BATH HARDWARE

1	2	3
PRODUCT CODE	ROSETTE	FINISH

MULTI POINT LOCK TRIM

1	2	3	4	ADD TO COMMENTS
PRODUCT CODE	LEVER STYLE	HANDING	FINISH	• DOOR THICKNESS

NOTES:

- Plate size such as 1-1/2" x 11" or 2" x 10" are Product Code Specific – Please confirm requirement
- Confirm required door configuration such as 1, 2, 3, 4, 5, 6, or 7.