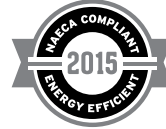




Residential Gas Water Heaters

SELECT® ATMOSPHERIC VENT



INTELLIGENT CONTROL LOGIC

- The internal microprocessor provides enhanced operating parameters and tighter differentials for precise sensing and faster heating response to optimize performance.
- Uses a thermopile to generate the power needed to operate the electronic gas control without requiring an external power source.
- The electronic gas control incorporates an LED status indicator that monitors system operation and service diagnostics.
- *Not available on 60,000 BTU input models (GS6 50 XCT and GS6 55 XCT).

GREEN CHOICE® GAS BURNER

- Patented eco-friendly burner design reduces NOx emissions by up to 33% and complies with Low-NOx emission requirements of less than 40 ng/J.

DYNACLEAN™ DIFFUSER DIP TUBE

- Reduces lime and sediment buildup and maximizes hot water output. Made from long-lasting PEX cross-linked polymer.

COREGARD™ ANODE ROD

- Our anode rods have a stainless steel core that extends the life of the anode rod allowing superior tank protection far longer than standard anode rods.

PUSH-BUTTON PIEZO IGNITOR

- Makes lighting the pilot fast and easy with one-hand push-button spark ignition.

HEAT TRAP NIPPLES

- Factory-installed for faster installation.

BLUE DIAMOND® GLASS COATING

- Provides superior corrosion resistance compared to industry standard glass lining.

ENHANCED FLOW BRASS DRAIN VALVE

- Our residential water heaters have a solid brass, tamper resistant, enhanced flow, ball type, drain valve.
- Uses a standard female hose fitting that allows for fast and easy draining during maintenance.
- Designed for easy operation, this valve includes an integral screwdriver slot that features a 1/4 turn (open/close) radius, which not only permits full straight-through water flow but also a quick and positive shut off.

CODE COMPLIANCE

- Meets UBC, CEC and HUD National Codes.
- Meets the thermal efficiency and standby loss requirements of the U. S. Department of Energy and current edition of ASHRAE/ IENSA 90.1
- Complies with the Federal Energy Conservation Standards effective April 16, 2015, in accordance with the Energy Policy and Conservation Act, (EPCA), as amended.

HIGH ENERGY FACTORS

- Eco-Friendly non-CFC foam insulation, external heat traps and specially designed combustion chamber combine to produce a high Energy Factor for maximum savings on operating costs.

CSA CERTIFIED AND ASME RATED T&P RELIEF VALVE

MAXIMUM HYDROSTATIC WORKING PRESSURE 150 PSI

DESIGN-CERTIFIED BY CSA INTERNATIONAL

- Certified at 300 PSI test pressure and 150 PSI working pressure. Listed according to ANSI Z21.10.1-CSA 4.1 standards governing storage tank-type water heaters.

6-YEAR LIMITED TANK AND PARTS WARRANTY

- For complete information, consult written warranty or State Water Heaters.



FLAMMABLE VAPOR IGNITION RESISTANT COMPLIANT DESIGN

SOLID. STATE.





Residential Gas Water Heaters

Model Number	Gallon Capacity	First Hour Rating Gallon	Energy Factor	BTU Input Natural Gas	BTU Input Propane Gas	Recovery @ 90°F Rise Gallon Per Hour	Dimensions in Inches								Draft Hood	Approx. Shipping Weight (lbs)
							A	B	C	D	E	F	*G	*H		
TALL MODELS																
†GS6 30 ORBT	30	64	0.63	35,500	32,000	36	61-3/4	58	16	12-1/4	8	51-3/4	N/A	N/A	3 to 4 combo	132
GS6 30 OCT	30	67	0.63	35,500	32,000	36	61-3/4	58	18	12-1/4	8	51-3/4	N/A	N/A	3 to 4 combo	123
GS6 40 BRBT	40	70	0.62	40,000	36,000	41	62	58-1/4	18	12-1/4	8	52	N/A	N/A	3 to 4 combo	158
†GS6 40 BCT*	40	70	0.62	40,000	36,000	41	62	58.25	20	12-1/4	8	52	14-1/4	51-3/4	3 to 4 combo	150
†GS6 40 OCT	40	67	0.62	35,500	N/A	36	62	58-1/4	20	12-1/4	8	52	N/A	N/A	3 to 4 combo	150
GS6 40 RCT*	40	75	0.62	50,000	N/A	51	62	58.25	20	12-1/4	8	52	14-1/4	51-3/4	4	150
†GS6 50 BRT	50	88	0.60	40,000	37,000	41	60-3/4	57-1/4	21	12-1/4	8	50-1/2	14-1/4	50-1/2	3 to 4 combo	148
†GS6 50 BCT	50	88	0.62	40,000	37,000	41	60-3/4	57-1/4	22	12-1/4	8	50-1/2	14-1/4	50-1/2	3 to 4 combo	165
†GS6 50 RCT*	50	92	0.60	50,000	45,000	58	60-3/4	57-1/4	22	12-1/4	8	50-1/2	14-1/4	50-1/2	4	165
GS6 50 XCT*	50	98	0.60	60,000	54,000	61	65-1/2	61	22	13-1/2	8	54-1/4	14-1/4	50-1/4	4	190
GS6 55 XCT*	55	103	0.59	60,000	54,000	61	60	55-1/2	24	13-1/2	8	48	14-1/4	48	4	189
SHORT MODELS																
†GS6 30 ORBS	30	62	0.63	35,500	32,000	36	50	46-1/4	18	13-1/4	8	13-1/4	N/A	N/A	3 to 4 combo	110
GS6 30 OCS	30	64	0.63	35,500	32,000	36	50	46-1/4	20	13-1/4	8	40	N/A	N/A	3 to 4 combo	118
†GS6 40 BCS	40	69	0.62	40,000	36,000	41	51-1/2	47-3/4	22	13-1/4	8	41-1/4	N/A	N/A	3 to 4 combo	134
GS6 40 BRBS	40	70	0.62	40,000	36,000	41	51-1/2	47-3/4	20	13-1/4	8	41-1/4	N/A	N/A	3 to 4 combo	135
GS6 50 BRBS	50	93	0.60	40,000	40,000	41	53	49-1/4	24	13-1/4	8	42-2/3	N/A	N/A	3 to 4 combo	135

Recovery capacity based on actual performance tests. Water connection - 3/4" on all models.

*Optional side-mounted recirculating taps, add "L" to the suffix in the model number (GS6 50 BRTL).

†Models ship with supplied insulation blanket.

For 10-year tank and 6-year parts warranty, change "6" to "X" in the model number (example: GSX 30 OCT). LP models not available on GS6 40 OCT and GS6 40 RCT).

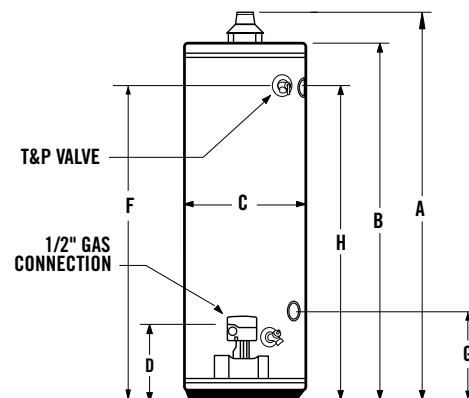
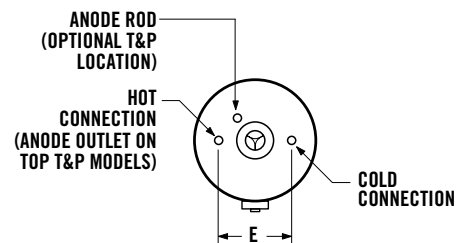
All models approved for installation from sea level to 10,100 ft. elevation.

Dimensions and specifications subject to change without notice in accordance with our policy of continuous product improvement.

FLAMMABLE VAPOR IGNITION RESISTANT (FVIR) WATER HEATERS

State FVIR design meets the American National Standards Institute standards (ANSI Z21.10.1 CSA 4.1) that deal with the accidental or unintended ignition of flammable vapors, such as those emitted by gasoline.

It features a sealed combustion chamber with air intake filter and a flame arrestor built into the water heater base. In addition, a thermal cutoff (TCO) device, is designed to shut off gas flow to the burner and pilot if poor combustion is detected.



Maximum Hydrostatic Working Pressure: 150 PSI

FOR MORE INFORMATION ON SELECT® CONTACT: STATE WATER HEATERS 500 TENNESSEE WALTZ PARKWAY, ASHLAND CITY, TN 37015 • 800-365-0024 TOLL-FREE USA • STATEWATERHEATERS.COM



Residential Gas Water Heaters

SELECT® MOBILE HOME ATMOSPHERIC VENT



GAS CONTROL CONVERTIBLE FOR NATURAL AND PROPANE GAS

- For flexibility to meet the varying needs of manufactured housing installations.

SIDE-MOUNTED 3/4" COLD WATER INLET

- For ease of installation when cold water supply originates below the structure.
- Top mounted 3/4" hot water outlet.

GREEN CHOICE® GAS BURNER

- Patented eco-friendly burner design reduces NOx emissions by up to 33% and complies with Low-NOx emission requirements of less than 40 ng/J.

COREGARD™ ANODE ROD

- Our anode rods have a stainless steel core that extends the life of the anode rod allowing superior tank protection far longer than standard anode rods.

BLUE DIAMOND® GLASS COATING

- Provides superior corrosion resistance compared to industry standard glass lining.

ENHANCED FLOW BRASS DRAIN VALVE

- Our residential water heaters have a solid brass, tamper resistant, enhanced flow, ball type, drain valve.
- Uses a standard female hose fitting that allows for fast and easy draining during maintenance.
- Designed for easy operation, this valve includes an integral screwdriver slot that features a 1/4 turn (open/close) radius, which not only permits full straight-through water flow but also a quick and positive shut off.

CODE COMPLIANCE

- Meets UBC, CEC and HUD National Codes/
- Meets the thermal efficiency and standby loss requirements of the U.S. Department of Energy and current edition of ASHRAE/IESNA 90.1.
- Complies with the Federal Energy Conservation Standards effective April 16, 2015, in accordance with the Energy Policy and Conservation Act (EPCA), as amended.

COMPLIES WITH HUD STANDARDS FOR MANUFACTURED HOUSING INSTALLATION

CSA CERTIFIED AND ASME RATED T&P RELIEF VALVE

MAXIMUM HYDROSTATIC WORKING PRESSURE 150 PSI

6-YEAR LIMITED TANK AND PARTS WARRANTY

- For complete information, consult written warranty or State Water Heaters.



FLAMMABLE VAPOR IGNITION RESISTANT COMPLIANT DESIGN

SOLID. STATE.

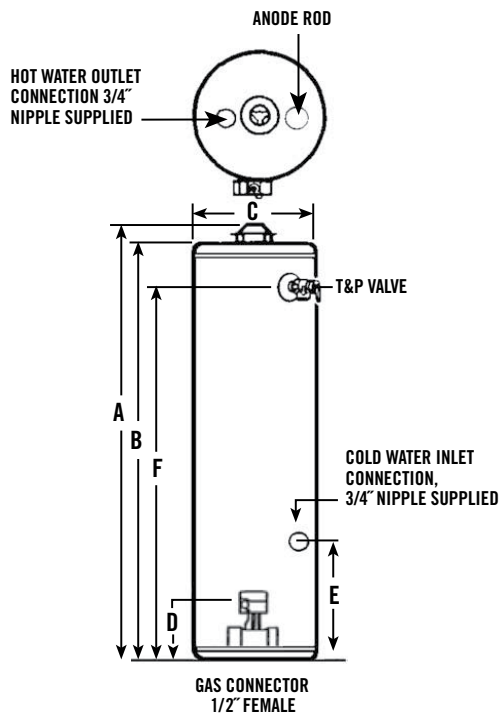




Residential Gas Water Heaters

Model Number	Gallon Capacity	First Hour Rating Gallon	Energy Factor	Btu Input Per Hour Natural Gas	Btu Input Per Hour Propane	Recovery @ 90°F Rise Gallon Per Hour	Dimensions in Inches						Draft Hood Outlet	Approx. Shipping Weight (lbs)	
							Insulation	A	B	C	D	E			F
GS6 30 MHG	30	55	0.63	35,500	32,000	36	2	61-1/2	58	18	13	14-1/4	52	3 or 4	129
GS6 40 MHG	40	62	0.62	35,500	32,000	36	2	61-3/4	58-1/4	20	13	14-1/4	51-3/4	3 or 4	153

All models ship from the factory for use with natural gas, a complete propane (LP) burner is supplied for converting to propane gas. All models are certified from sea level to 10,100 ft. elevation. Dimensions and specifications subject to change without notice in accordance with our policy of continuous product improvement.



ROOF JACK INSTALLATION

This water heater must have a properly-installed draft hood and be connected to a listed roof jack that terminates to the outdoors. The roof jack vent pipe must be secured to the draft hood with sheet metal screws. (Roof jack not furnished.)

The following roof jack models are certified for use with this water heater and are available from your water heater supplier:

Field Controls No. 987 for roof pitch of 5-12 or less:

Kit Number	Maximum Length Between Roof and Ceiling
9002964005	12"
9002965005	32"
9002966005	60"
9002967005	95"

White Metal Products 3RJ for roof pitch of 3-12 or less:

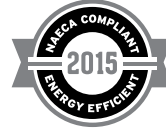
Kit Number	Maximum Length Between Roof and Ceiling
9007941005	14"
9007942005	30"

Install the roof jack according to its manufacturer's instructions.



Residential Gas Water Heaters

SELECT® MOBILE HOME DIRECT VENT



COMPLIES WITH HUD STANDARDS FOR MANUFACTURED HOUSING INSTALLATION

FLAMMABLE VAPOR IGNITION RESISTANT COMPLIANT DESIGN

GAS CONTROL CONVERTIBLE FOR NATURAL AND PROPANE GAS

- For flexibility to meet the varying needs of manufactured housing installations.

SIDE-MOUNTED 3/4" COLD WATER INLET

- For ease of installation when cold water supply originates below the structure.
- Top mounted 3/4" hot water outlet.

DIRECT VENT MODELS PACKAGE WITH BOTTOM INTAKE AIR VENT

- To draw all combustion make-up air from outside the structure.

OPTIONAL DUCTED AIR INLET KIT FOR DIRECT VENT MODELS

- For use when water heater is installed over a basement.
- Provision for horizontal air inlet ducting. See instruction manual for approved venting distance by model.

GREEN CHOICE® GAS BURNER

- Patented eco-friendly design reduces NOx emissions by up to 33% and complies with Low-NOx emission requirements of less than 40 ng/J.

COREGARD™ ANODE ROD

- Our anode rods have a stainless steel core that extends the life of the anode rod allowing superior tank protection far longer than standard anode rods.

ENHANCED BRASS DRAIN VALVE

- Our residential water heaters have a solid brass, tamper resistant, enhanced flow, ball type, drain valve.
- Uses a standard female hose fitting that allows for fast and easy draining during maintenance.
- Designed for easy operation, this valve includes an integral screwdriver slot that features a 1/4 turn (open/close) radius, which not only permits full straight-through water flow but also a quick and positive shut off.

BLUE DIAMOND® GLASS COATING

- Provides superior corrosion resistance compared to industry standard glass lining.

CODE COMPLIANCE

- Meets UBC, CEC and HUD National Codes.
- Meets the thermal efficiency and standby loss requirements of the U.S. Department of Energy and current edition of ASHRAE/IESNA 90.1
- Complies with the Federal Energy Conservation Standards effective April 16, 2015, in accordance with the Energy Policy and Conservation Act (EPCA), as amended.

CSA CERTIFIED AND ASME RATED T&P RELIEF VALVE

MAXIMUM HYDROSTATIC WORKING PRESSURE 150 PSI

6-YEAR LIMITED TANK AND PARTS WARRANTY

- For complete information, consult written warranty or State Water Heaters.



FLAMMABLE VAPOR IGNITION RESISTANT COMPLIANT DESIGN

SOLID. STATE.



Model Number	Gallon Capacity	First Hour Rating Gallon	Energy Factor	Btu Input Per Hour Natural Gas	Btu Input Per Hour Propane	Recovery @ 90°F Rise Gallon Per Hour	Dimensions in Inches									
							Insulation (Inches)	A	B	C	D	E	F	Draft Hood Outlet	Approx. Shipping Weight (lbs)	
6S6 30 MDV	30	49	0.63	30,000	29,000	31	2	61	58	18	13	14-1/4	52-1/2	3	129	
6S6 40 MDV	40	61	0.62	32,000	29,000	33	2	61-3/4	58-3/4	20	13	14-1/4	52-1/4	3	153	
6S6 50 MDV	50	77	0.60	40,000	37,000	39	2	60	57	22	13	14-1/4	50	3	168	

Recovery capacity based on actual performance tests.

Water connection - 3/4" on all models.

All models ship from the factory for use with natural gas, a complete propane burner is supplied for converting to propane gas.

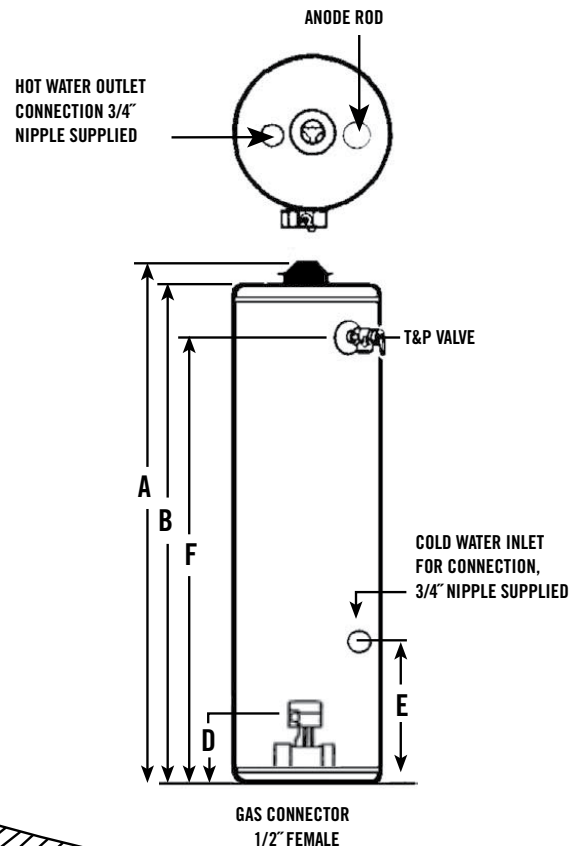
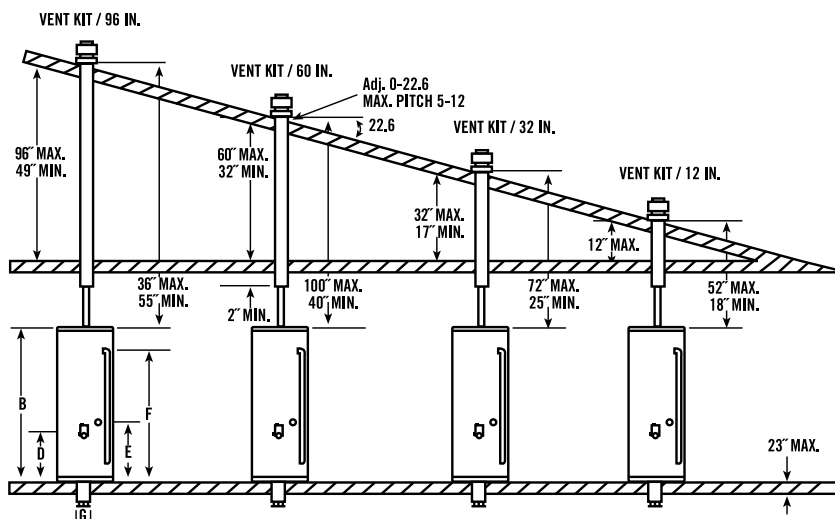
All models approved for installation from sea level to 5,400 ft. elevation.

Dimensions and specifications subject to change without notice in accordance with our policy of continuous product improvement.

Kit Number	MIN.	MAX.	Approx. Shipping Weight (lbs)
9002964005	-	12"	10
9002965005	18"	32"	13
9002966005	32"	60"	22
9002967005	36"	95"	27

APPROVED ROOF JACK KITS

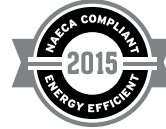
Direct Vent mobile home water heaters must be installed using one of these approved Roof Jack Kits, which must be ordered separately. "Min." and "Max." dimensions indicate kit adjustability for varying vent distance, as shown in drawing.





Residential Gas Water Heaters

SELECT® ULTRA-LOW NO_x



INTELLIGENT CONTROL LOGIC

- The internal microprocessor provides enhanced operating parameters and tighter differentials for precise sensing and faster heating response to optimize performance.
- Uses a thermopile to generate the power needed to operate the electronic gas control without requiring an external power source
- The electronic gas control incorporates an LED status indicator that monitors system operation & service diagnostics.

HIGH ENERGY FACTORS

- Eco-friendly non-CFC foam insulation, heat traps and specially designed combustion chamber combine to produce a high Energy Factor for maximum savings on operating costs.

GREEN CHOICE® GAS BURNER

- Enhanced Ultra-low NO_x burner complies with SCAQMD Rule 1121 and other air quality management districts with similar requirements for NO_x emissions of less than 10 ng/J.

SELF-CLEANING DIP TUBE

- Helps reduce lime and sediment buildup and maximizes hot water output. Made from long-lasting PEX cross-linked polymer.

COREGARD™ ANODE ROD

- Our anode rods have a stainless steel core that extends the life of the anode rod allowing superior tank protection far longer than standard anode rods.

PUSH-BUTTON PIEZO IGNITOR

- Makes lighting the pilot fast and easy with one-hand push-button spark ignition

HEAT TRAP NIPPLES

- Factory-installed for faster installation

BLUE DIAMOND® GLASS COATING

- Provides superior corrosion resistance compared to industry standard glass lining.

ENHANCED FLOW BRASS DRAIN VALVE

- Our residential water heaters have a solid brass, tamper resistant, enhanced flow, ball type, drain valve.
- Uses a standard female hose fitting that allows for fast and easy draining during maintenance.
- Designed for easy operation, this valve includes an integral screwdriver slot that features a ¼ turn (open/close) radius, which not only permits full straight-through water flow but also a quick and positive shut off.

CODE COMPLIANCE

- Meets UBC, CEC and HUD National Codes.
- Meets the thermal efficiency and standby loss requirements of the U.S. Department of Energy and current edition of ASHRAE/IESNA 90.1.
- Complies with the Federal Energy Conservation Standards effective April 16, 2015, in accordance with the Energy Policy Conservation Act (EPCA), as amended.

CSA CERTIFIED AND ASME RATED T&P RELIEF VALVE

- Top-mounted T&P relief valve available as option.

6-YEAR LIMITED TANK AND PARTS WARRANTY

- For complete information, consult written warranty or State Water Heaters.



SOLID. STATE.

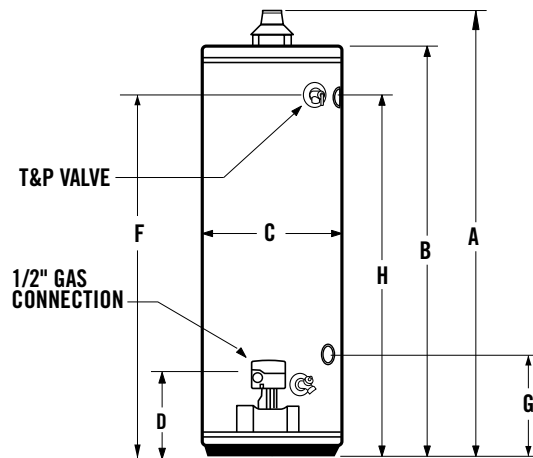
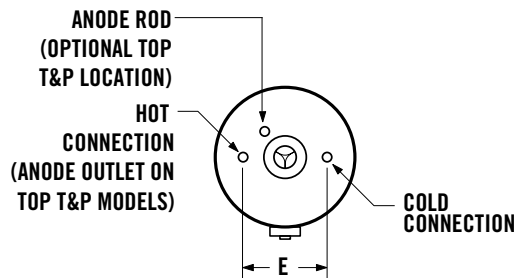




Residential Gas Water Heaters

Model Number	Gallon Capacity	First Hour Rating Gallon	Energy Factor	BTU Input Per Hour Natural Gas	Recovery @ 90° Rise Gallon Per Hour	Dimensions in Inches									Draft Hood	Approx. Shipping Weight (lbs)
						A	B	C	D	E	F	G*	H*			
TALL MODELS																
GS6 30 ORUT	30	55	0.63	33,000	34	61-3/4	58	16	12	8	51-3/4	N/A	N/A	3 to 4 combo	126	
GS6 40 BCUT	40	71	0.62	40,000	41	62	58-1/4	20	12	8	52	N/A	N/A	3 to 4 combo	TBD	
†GS6 40 BRBT	40	71	0.62	40,000	41	62	58-1/4	18	12	8	52	N/A	N/A	3 to 4 combo	153	
GS6 50 BCUT	50	TBD	0.62	40,000	42	60-3/4	57-1/4	22	12	8	50-1/2	N/A	N/A	3 to 4 combo	TBD	
GS6 50 BRUT	50	TBD	0.60	40,000	42	60-3/4	57-1/4	20	12	8	50-1/2	N/A	N/A	3 to 4 combo	168	
GS6 50 RCUT*	50	98	0.60	50,000	51	64	60	22	12-1/4	8	53-1/4	12-1/4	53-1/4	4	177	
SHORT MODELS																
GS6 40 BCUS	40	71	0.62	40,000	41	51-1/2	47-3/4	22	12	8	41-1/4	N/A	N/A	3 to 4 combo	138	

Recovery capacity based on actual performance tests.
 All models may be ordered from the factory with top T&P.
 *Standard with side recirculating taps (model GS6 50 RCUT).
 †Models ship with supplied insulation blanket.
 All models approved for installation from sea level to 7,700 ft. elevation (except GS6 50 RCUT, approved to 5,400 ft.).
 Dimensions and specifications subject to change without notice in accordance with our policy of continuous product improvement.



Maximum Hydrostatic Working Pressure: 150 PSI

FOR MORE INFORMATION ON SELECT® CONTACT: STATE WATER HEATERS 500 TENNESSEE WALTZ PARKWAY, ASHLAND CITY, TN 37015 • 800-365-0024 TOLL-FREE USA • STATEWATERHEATERS.COM



Residential Gas Water Heaters

SELECT® ATMOSPHERIC VENT 75 & 100 GALLON

HIGHEST RECOVERIES

- Capacity/input combinations up to 98 gallons/75,100 BTU's produce recoveries up to 81 gallons per hour.

FULLY AUTOMATIC CONTROLS WITH SAFETY SHUTOFF

- Accurate, dependable control system requires no electric connections.
- Fixed automatic gas shutoff device for added safety.

GREEN CHOICE® GAS BURNER

- Patented eco-friendly burner design reduces NOx emissions up to 33% and complies with Low-NOx emission requirements of 14 ng/J or 20 ppm.

SELF-CLEANING DIP TUBE

- Reduces lime and sediment buildup, maximizes hot water output. Made from long-lasting Pex cross-linked polymer

COREGARD™ ANODE ROD

- Our anode rods have a stainless steel core that extends the life of the anode rod allowing superior tank protection far longer than standard anode rods.

PUSH-BUTTON PIEZO IGNITOR

- Makes lighting the pilot fast and easy with one-hand push-button spark ignition (Natural gas only).

NIPPLES

- Factory-Installed for faster installation

BLUE DIAMOND® GLASS COATING

- Provides superior corrosion resistance compared to industry-standard glass lining.

ENHANCED FLOW BRASS DRAIN VALVE

- Our residential water heaters have a solid brass, tamper resistant, enhanced flow, ball type, drain valve.
- Uses a standard female hose fitting that allows for fast and easy draining during maintenance.
- Designed for easy operation, this valve includes an integral screwdriver slot that features a 1/4 turn (open/close) radius, which not only permits full straight-through water flow but also a quick and positive shut off.

CODE COMPLIANCE

- Meets UBC, CEC and ICC National Codes.
- Meets the thermal efficiency and standby loss requirements of the U.S. Department of Energy and current edition of ASHRAE/IESNA 90.1

CSA CERTIFIED AND ASME RATED T&P RELIEF VALVE

MAXIMUM HYDROSTATIC WORKING PRESSURE 150 PSI

DESIGN-LISTED BY UNDERWRITERS LABORATORIESE

- Certified at 300 PSI test pressure and 150 PSI working pressure.
- Listed according to ANSI Z21. 10.3 CSA 4.3 standards governing storage tank-type water heaters.

6-YEAR LIMITED TANK AND PARTS WARRANTY

- For complete information, consult written warranty or State Water Heaters.



SOLID. STATE.

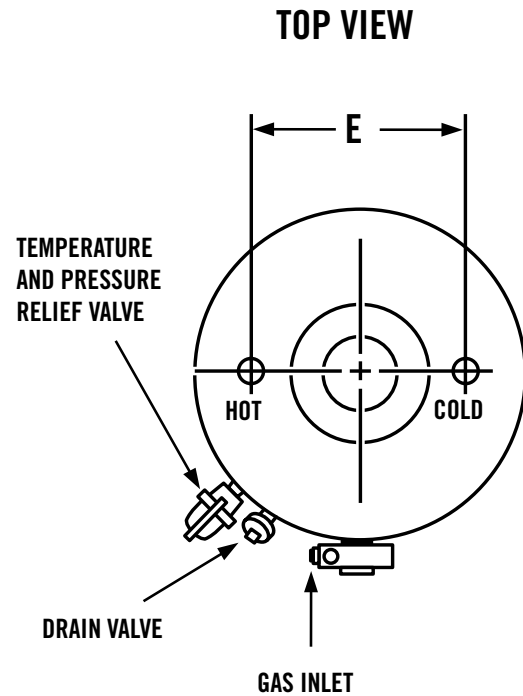
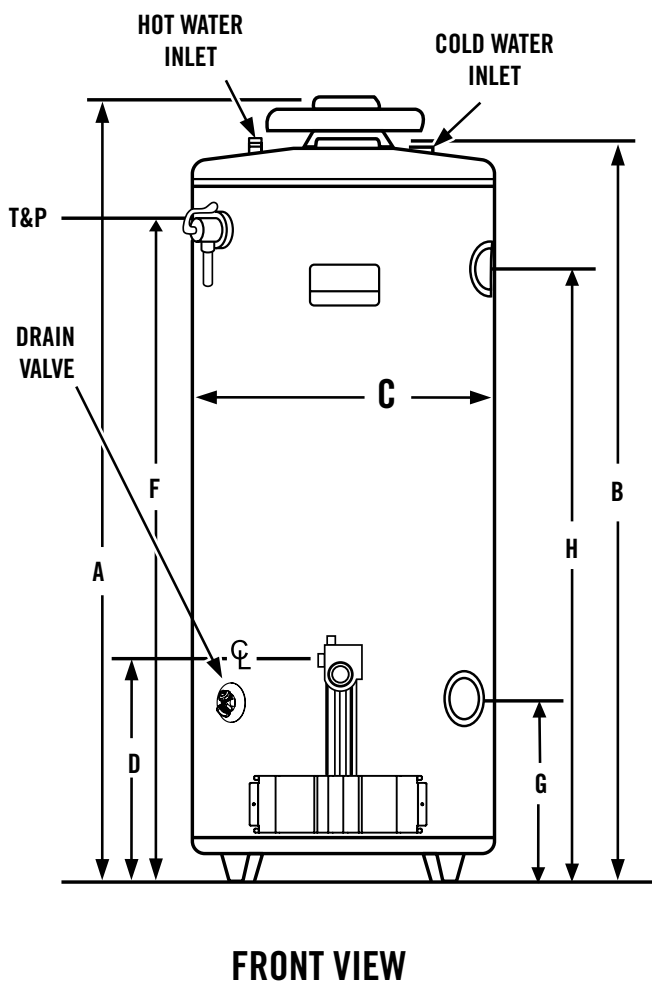




Residential Gas Water Heaters

Model Number	Gallon Capacity	BTU Input Natural Gas	Recovery @ 90°F Rise Gallon Per Hour	Dimensions in Inches								Draft Hood	Approx. Shipping Weight (lbs)
				A	B	C	D	E	F	G	H		
GS6 75 XRRS	74	75,100	81	61	57	26-1/2	14-3/4	16	50-1/4	15-1/2	50-1/4	4	275
GS6 100 XRRT	98	75,100	81	68-1/2	65	27-3/4	15-3/16	16	57-3/8	N/A	N/A	4	350

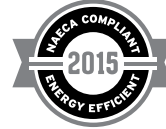
Recovery capacity are based on actual performance tests.
 Water connections are- 1" on GS6 75 XRRS and 1-1/4" on GS6 100 XRRT.
 For 10- year tank and 6-year parts limited warranty, change "6" to "X" in the model number (example: GSX 75 XRRS).
 For optional side-mounted recirculating taps, add "L" to suffix (example: GS6 75 XRRS L).
 Dimensions and specifications subject to change without notice in accordance with our policy of continuous product improvement.





Residential Gas Water Heaters

SELECT® DIRECT VENT



DIRECT VENT DESIGN

- One-pipe, dual-channel closed system draws all make-up air from outside the home, eliminating problems caused by insufficient indoor ventilation and is FVIR compliant. Horizontal air intake and venting on all models up to 80 inches from outside wall with no electrical power needed.

INTELLIGENT CONTROL LOGIC

- The internal microprocessor provides enhanced operating parameters and tighter differentials for precise sensing and faster heating response to optimize performance.
- Uses a thermopile to generate the power needed to operate the electronic gas control without requiring an external power source.
- The electronic gas control incorporates an LED status indicator that monitors system operation and service diagnostics.

GREEN CHOICE® GAS BURNER

- Patented eco-friendly burner design reduces NOx emissions up to 33% and complies with Low-NOx emission requirements of less than 40 ng/J.

SELF-CLEANING DIP TUBE

- Helps reduce lime and sediment buildup and maximizes hot water output. Made from long-lasting PEX cross-linked polymer.

COREGARD™ ANODE ROD

- Our anode rods have a stainless steel core that extends the life of the anode rod allowing superior tank protection far longer than standard anode rods.

PUSH BUTTON PIEZO IGNITOR

- Makes lighting pilot fast and easy with one-hand push-button spark ignition.

HEAT TRAP NIPPLES

- Factory-installed for faster installation.

ENHANCED FLOW BRASS DRAIN VALVE

- Our residential water heaters have a solid brass, tamper resistant, enhanced flow, ball type, drain valve.
- Uses a standard female hose fitting that allows for fast and easy draining during maintenance.
- Designed for easy operation, this valve includes an integral screwdriver slot that features a ¼ turn (open/close) radius, which not only permits full straight-through water flow but also a quick and positive shut off.

CSA CERTIFIED AND ASME RATED T&P RELIEF VALVE

CODE COMPLIANCE

- Meets UBC, CEC and HUD National Codes.
- Meets the thermal efficiency and standby loss requirements of the U.S. Department of Energy and current edition of ASHRAE/IESNA 90.1
- Complies with the Federal Energy Conservation Standards effective April 16, 2015, in accordance with the Energy Policy and Conservation Act (EPCA), as amended.

6-YEAR LIMITED TANK AND PARTS WARRANTY

- For complete information, consult written warranty or State Water Heaters.



FLAMMABLE VAPOR IGNITION RESISTANT COMPLIANT DESIGN

SOLID. STATE.



Model Number	Series	Gallon Capacity	First Hour Rating Gallon	Energy Factor	Input BTU per Hour	Recovery 90°F Rise Gallon Per Hour	Dimensions in Inches								Vent Outlet	Approx. Shipping Weight (lbs)
							A	B	C	D	E	F	G	H		
GS6 40 YBDS	300	40	72	0.63	38,000	41	64	49-3/4	22	13-1/4	15-1/4	42-1/2	29	15-1/4	Co-Axial	178
GS6 50 YBDS	300	50	91	0.62	40,000	43	73	59	22	13-1/4	15-1/4	51-3/4	29	15-1/4	Co-Axial	200
GS6 50 YRDS	300	50	92	0.61	47,000	51	74	60	22	13-1/4	15-1/4	52-3/4	29	15-1/4	Co-Axial	215

Recovery capacities based on actual performance tests.

*Dual-channel system has 3" vent pipe inside 6" air intake pipe, for the 40 and 50-gallon models.

All models have 2" foam cavity.

Water connection is 3/4" male on all models.

40 and 50 gallon models are 8" on center.

All models are available in propane (LP) gas (series 301).

All models are certified from sea level to 7,700 ft. elevation.

Side connections optional. Add "L" to the model number (example: GS6 40 YBDS L).

Side T&P standard on all models.

Dimensions and specifications subject to change in accordance with our policy of continuous product improvement.

IMPORTANT! VENT INSTALLATION AND TERMINATION REQUIREMENTS

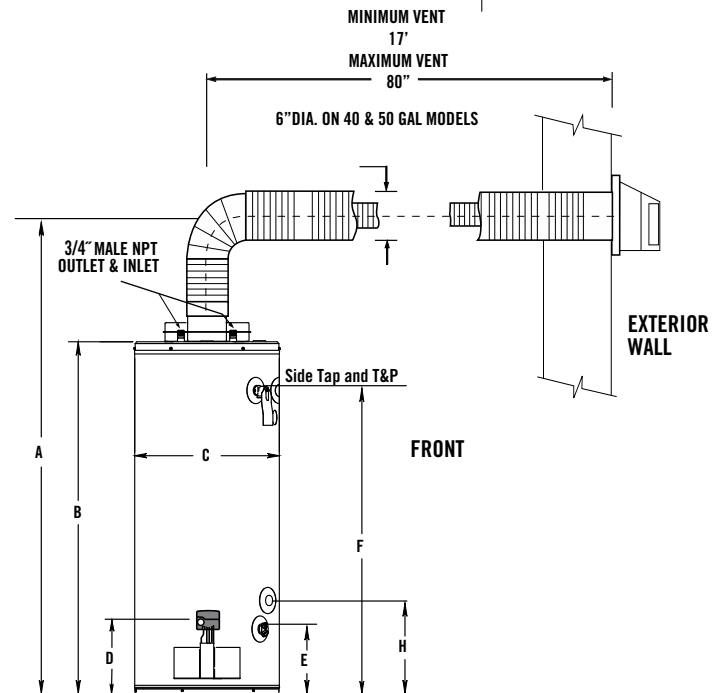
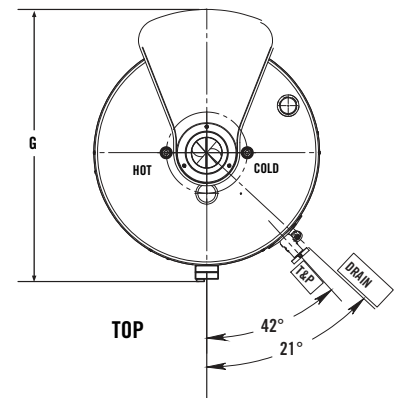
- Maximum horizontal vent distance is 80" to the outside of exterior wall.
- Maximum vertical vent distance is 72" above heater before 90 degree turn through exterior wall.
- Minimum horizontal vent distance is 17" to outside of exterior wall.
- Vent pipes may be trimmed (cut) for short vent installations.
- The recommended installation height for the vent termination is dimension "A" in the above table. The minimum allowable height (center line of termination opening) is 60 3/4" for the 40-gallon model, 69 1/2" for the 50-gallon 40,000 BTU input model, 70 1/2" for the 50-gallon model, 47,000 BTU input model.

VENT RESTRICTOR PLATE:

- The vent restrictor plate is required for short horizontal vent runs less than 30" horizontal and vent runs when the termination's height is greater than 48" above the heater. The only time the restrictor is not required is for horizontal runs greater than 30" in length with the termination less (lower) than 48" above the heater. See installation instructions for complete details.

OFFSET VENT ARRANGEMENT:

- The vent run may have one (1) 90 degree horizontal turn prior to terminating through the exterior wall. See installation instructions for complete details.
- Vent termination clearance hole through the exterior wall should be approximately 7" diameter.
- Snow accumulation and drifting should be considered when locating the termination.
- An optional wire grill vent cap protector is available through the parts department. (Part number 9006627005).
- See the installation manual for complete installation and venting requirements.





Residential Gas Water Heaters

SELECT® ULTRA-LOW NOx DIRECT VENT

FLAMMABLE VAPOR RESISTANT/DIRECT VENT SEALED COMBUSTION SYSTEM

- Thru-the-wall/thru-the-roof venting of combustion products
- Air for combustion is drawn from outside the building

DURABLE, ULTRA-LOW NOx BURNER CONSTRUCTION

NON-CFC FOAM INSULATION

- The tank is surrounded by a thick coat of non-CFC polyurethane foam to trap heat inside the tank, saving energy.

COMBINATION THERMOSTAT/ECO

- With factory-preset pressure regulator and built-in millivolt-powered energy cut-off for overheat protection

¾" TOP WATER CONNECTIONS AND SIDE SPACE HEATING CONNECTIONS

½" GAS CONNECTION

COMBINATION THERMOSTAT/ECO

- With factory-preset pressure regulator and built-in millivolt-powered energy cut-off for overheat protection.

COREGARD™ ANODE ROD

- Our anode rods have a stainless steel core that extends the life of the anode rod allowing superior tank protection far longer than standard anode rods.

BLUE DIAMOND® GLASS COATING

- Provides superior corrosion resistance compared to industry-standard glass lining

ENHANCED BRASS DRAIN VALVE

- Our residential water heaters have a solid brass, tamper resistant, enhanced flow, ball type, drain valve.
- Uses a standard female hose fitting that allows for fast and easy draining during maintenance.
- Designed for easy operation, this valve includes an integral screwdriver slot that features a ¼ turn (open/close) radius, which not only permits full straight-through water flow but also a quick and positive shut off.

CODE COMPLIANCE

- Meets UBC, CEC and HUD National Codes
- Meets the thermal efficiency and standby loss requirements of the U.S. Department of Energy and current edition of ASHRAE/IESNA 90.1
- Complies with the Federal Energy Conservation Standards effective April 16, 2015, in accordance with the Energy Policy and Conservation Act (EPCA), as amended.

CSA CERTIFIED AND ASME RATED T&P RELIEF VALVE

6-YEAR LIMITED TANK AND PARTS WARRANTY

- For complete information, consult written warranty or State Water Heaters.



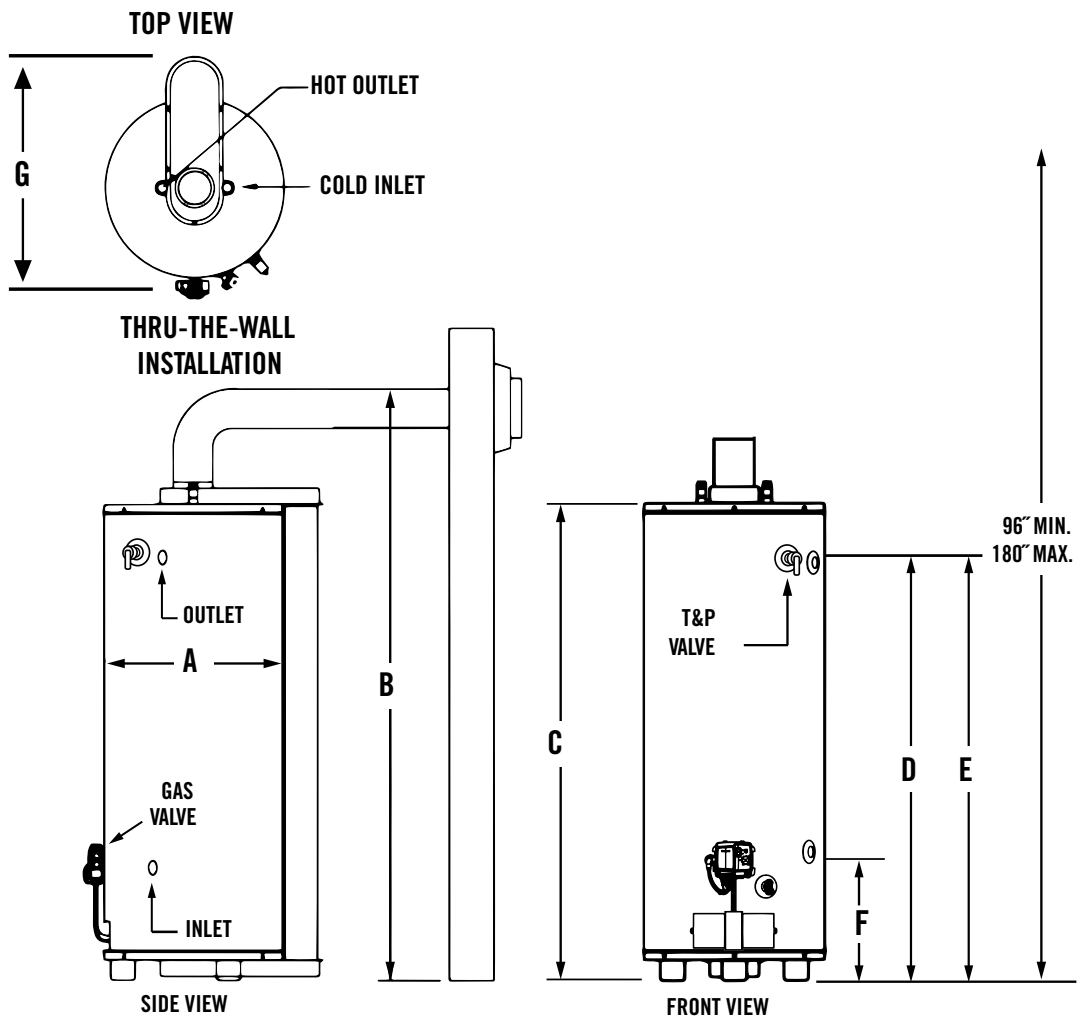
SOLID. STATE.



Model Number	Gallon Capacity	First Hour Rating Gallon	Energy Factor	Recovery @ 90°F Rise Gallon Per Hour	BTU Input Per Hour	Concentric Vent Connection	Dimensions in Inches							Approx. Shipping Weight (lbs)
							A	B	C	D	E	F	G	
GS6 40 UBDS L	40	59	0.62	39	36,000	3 and 5	22	65-1/4	50-1/2	43-7/8	TBD	TBD	27	179
GS6 50 UBDT L	50	81	0.62	41	38,000	3 and 5	22	73-1/2	58-1/2	52-1/4	TBD	TBD	27	193

No option available for top T&P valve.
 All models have 3/4" side and top water connections and 1/2" gas connections.
 Side connections are located on the right side of the heater.
 Dimensions and specifications are subject to change without notice in accordance with our policy of continuous product improvement.

SELECT[®] ULTRA-LOW NO_x DIRECT VENT



FOR MORE INFORMATION ON SELECT[®] CONTACT: STATE WATER HEATERS 500 TENNESSEE WALTZ PARKWAY, ASHLAND CITY, TN 37015 • 800-365-0024 TOLL-FREE USA • STATEWATERHEATERS.COM